

MISSION DATA CARD

OPORD		Callsign		Mission		Date/Time		
2997/2024		Edelweiss 1		Training		151607JUN24		
Task						Freq		
AO						134.25		
Departure				Recovery				
RWY10 VFR				RWY28 VFR				
#	Callsign		Pilot		IFF	TCN	LSR	NET
-1	Edelweiss 1-1		Jinx		1711	1Y	1711	

LOADOUT

A/A	2xA120C, 2xA9X				GUN	100% HEI-T	
A/G					CHF	60	
POD	HTS, TGP				FLR	60	
TKS	2xFT300				FUEL	100%	

TOLD

	Takeoff	Target	Joker	Bingo	Land
FUEL	11169			2500	

AIRBASES

	Name	TCN	ATIS	GND	TWR	RWY	Elev	ILS
Dep	Akrotiri AFB	107X	288.2	240.1	339.85	28	62	109.7
Arr	Akrotiri AFB	107X	288.2	240.1	339.85	28	62	109.7
Div	Incirlik AFB	21X	377.47 5	371.35	360.1	5	190	

FLIGHTPLAN

#	Name	Navaid/Coords/DME	ALT	TOT
1	ECHO	N34 42.600 E033 10	5000	
2	PAPA	N34 39.390 E032 46.480	5000	
3	FALCON	N37 05.067 E035 40.888	2500	
4	INITIAL 23	N37 03.956 E035 31.866	2000	
5	EAGLE	N36 52.938 E035 21.611	2500	
6	INITIAL 05	N36 56.654 E035 19.839	2000	

SUPPORT**Tanker**

Callsign	TCN	Freq	ALT	TAS
TEXACO 1	71Y	265.0	FL170	300
	Pos	TEXACO1: (N3657 E03434)		
ARCO 2	41Y	360.8	FL220	400
	Pos	ARCO2: (N3653 E03452)		

RADIO CHANNELS

#	Freq	Name
1		Flight/Squadron specific
2	288.2	Akrotiri ATIS
3	240.1	Akrotiri Ground
4	339.85	Aktrotiri Tower
5	335.05	Akrotiri Approach
6	360.1	Incirlik Tower
7	371.35	Incirlik Ground
8	377.475	Incirlik ATIS
9		No Preset
10	127.3	Paphos ATIS
11	353.8	Paphos Tower
12	304.0	CVN-73 George Washington
13	302.0	LHA-1 Tarawa
14	259.0	CV-59 Forrestal
15		No Preset
16	377.8	Overlord
17	265.0	KC-135 Texaco-1 medium/slow
18	319.8	KC-135 Arco-1
19	360.8	KC-135MPRS Arco-2
20	256.0	S-3B Recovery Tanker

RAMROD

0	1	2	3	4	5	6	7	8	9
C	O	P	Y	R	I	G	H	T	S

KTC 1400 C

	0	1	2	3	4	5	6	7	8	9
A	KBFS	HGW	YLR	NC	EP	XVA	IM	OT	UQ	JD
B	UYNJ	PVS	ABW	TG	CX	FDR	HM	KQ	EI	OL
C	FATS	WBK	GRO	VX	DM	EUL	NH	QY	PJ	CI
D	GUYE	ILS	DMA	KH	VQ	TNO	JB	CP	WR	XF
E	GSKB	OLE	IQJ	PX	TH	MFU	AD	YN	VR	CW
F	HASN	EFI	QDC	XV	YR	GJP	KW	UB	LO	MT
G	OBMU	VGY	QLD	CE	AR	HKP	XJ	FS	IT	NW
H	JNKV	UEM	TIQ	XD	OB	PHW	RF	SG	CY	AL
I	KIFB	XCE	ODT	SQ	GN	AWJ	HU	RY	VM	LP
J	GATK	OLS	MDF	PU	QW	HJV	ER	YX	BI	NC
K	ERPU	LFW	QOK	JI	BV	TMH	XY	GA	NC	DS
L	PUBD	XQR	FWI	CO	KE	SAM	HV	TL	GN	YJ
M	YCIT	WVS	PJH	GD	BQ	KAO	RX	EU	NM	LF
N	RLFE	MTU	PQG	SW	YK	BIA	NV	JX	HC	OD
O	UKTJ	VQI	WNO	CE	PH	DXL	BA	RF	MS	YG
P	URTM	FGO	HSQ	EA	XK	YJP	BN	WD	IC	LV
Q	FMGV	XDT	YRQ	UN	SK	WPO	BI	HL	AJ	CE
R	CHTV	LAP	QXN	RD	WS	MUO	FK	BY	JE	IG
S	BVEM	PIJ	GDX	SY	UN	OWC	FH	LT	AQ	RK
T	SIGX	EDF	YTB	KJ	OL	URP	AM	QW	CN	HV
U	IPBY	EKG	TJM	QH	LC	OFX	ND	WV	RU	SA
V	PNCT	QLV	YMF	IW	XA	BKE	SO	GH	RU	DJ
W	JGCR	IMV	OQN	DA	TY	LHE	FB	WU	KX	SP
X	OAXR	LYC	WVQ	HD	BF	SUJ	EP	MT	KN	IG
Y	QWVC	OTL	GUJ	SR	HA	IFE	MY	BK	NP	DX

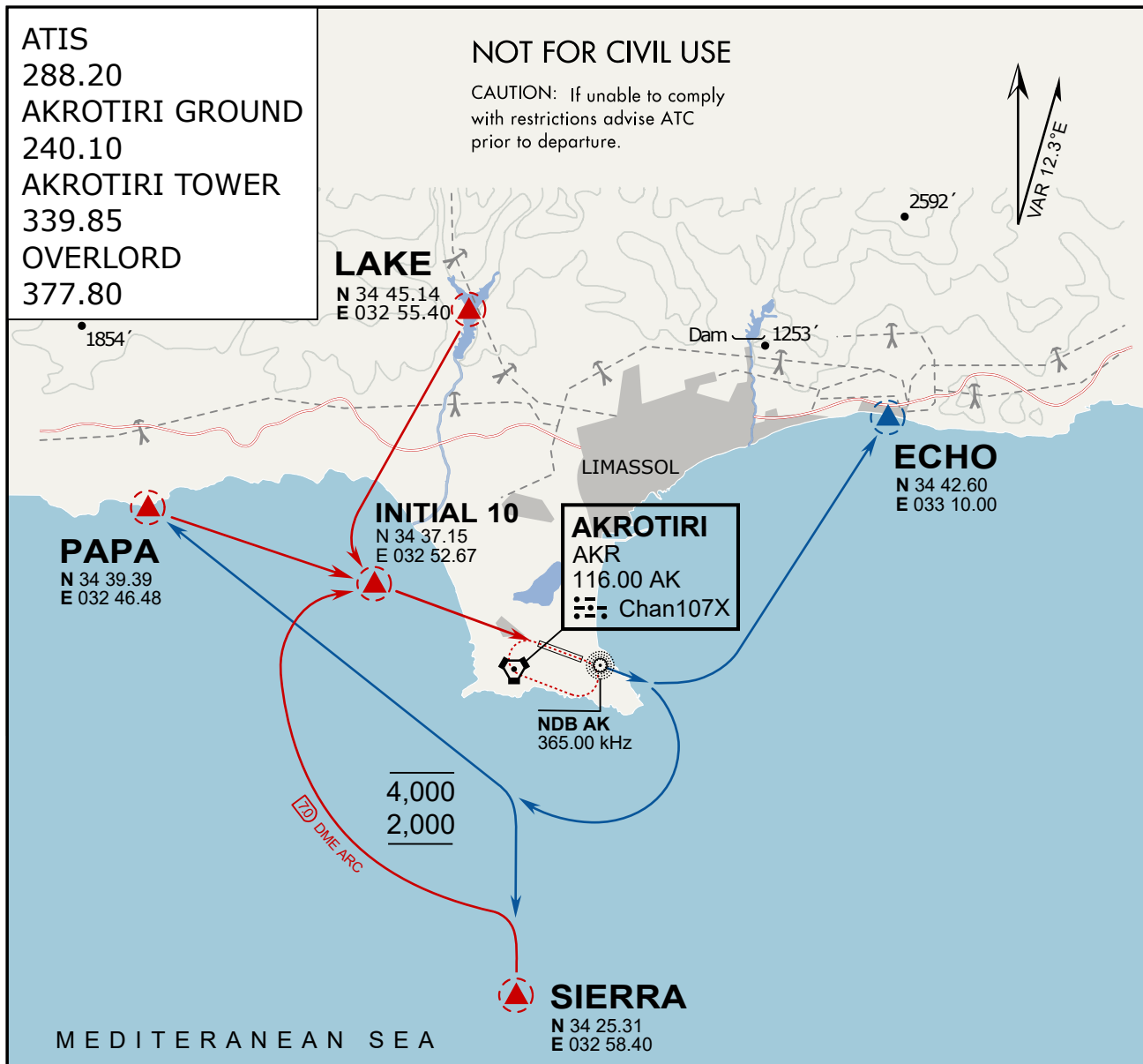
NAVAIDS

Id	Name	Channel	Position	Elevation
DAN	Incirlik	21	N37 00.950 E035 26.883	243
AKR	Akrotiri	107	N34 34.765 E032 57.769	147
PHA	Paphos	79	N34 42.997 E032 28.963	35
RMD	Ramat David	84	N32 39.892 E035 11.265	136
OS66	Kuweires Military Aviation Institute	36	N36 11.362 E037 34.226	1200

**FOR DCS
 USE ONLY**



ATIS	AKROTIRI GND	AKROTIRI TWR	OVERLORD CONTROL	TACAN	FIELD ELEVATION
288.20 MHz	240.10 122.10	339.85 130.075	377.8	AKR 107X	75 [ft] 23 [m]



ARR / DEP ROUTE DESCRIPTION

ARRIVAL GENERAL

Pass Entry at 5.000' or below. Overhead Brake RWY 10: pass INITIAL 10 at 2.000' MSL.
Straight-in RWY 10 : pass INITIAL 1.500' or below.

ARR RWY10 PAPA / LAKE: Direct initial.

ARR RWY10 SIERRA: Intercept ARC 7 of AKR to INITIAL 10.

ARR ECHO: no ENTRY.

DEPARTURE GENERAL

Pass Departure end of runway at 1.000' AGL or below. Keep RWY heading until coastline.

DEP RWY10 ECHO: Direct EXIT.

DEP RWY10 SIERRA: Climbing right turn, intercept R180 AKR to Sierra.

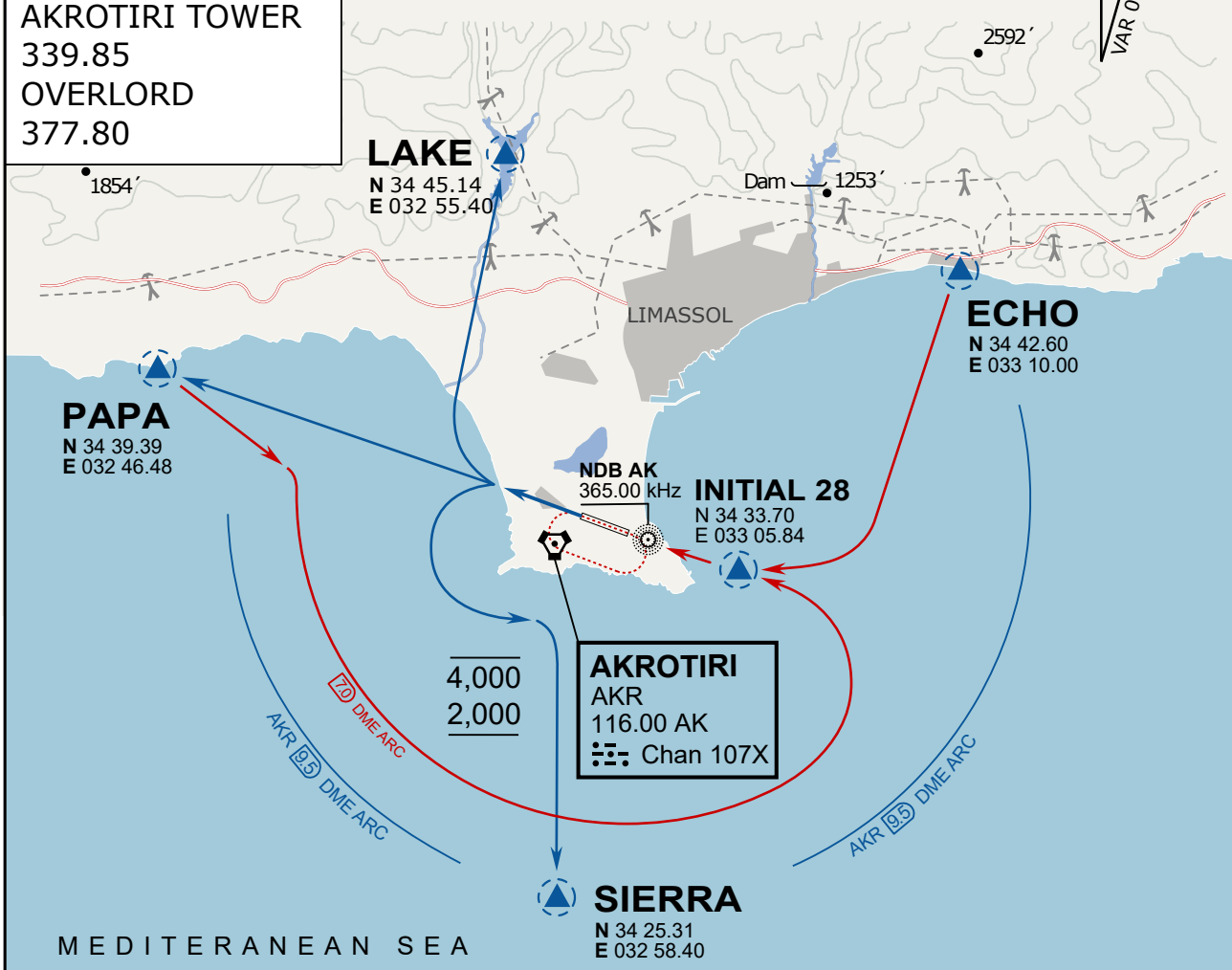
DEP RWY10 PAPA: Climbing right turn until R180 AKR, then direct Papa

DEP LAKE: no EXIT.

ATIS
 288.20
AKROTIRI GROUND
 240.10
AKROTIRI TOWER
 339.85
OVERLORD
 377.80

NOT FOR CIVIL USE

CAUTION: If unable to comply with restrictions advise ATC prior to departure.



ARR / DEP ROUTE DESCRIPTION

STRAIGHT-IN RWY28

Pass ENTRY at 5.000' MSL or below, pass INITIAL at 1.500' MSL or below.

OVERHEAD BREAK RWY28

Pass ENTRY at 5.000' MSL or below, pass INITIAL at 2.000' MSL, break to the south.

DEPARTURE GENERAL

Pass Departure end of runway at 1.000' or below.

DEP RWY28 PAPA: Fly straight ahead to exit.

DEP RWY28 LAKE: Fly straight ahead until coast, than right turn direct exit.

DEP RWY28 SIERRA: Fly straight ahead until coastline, then climbing left turn, intercept AKR R-180 to exit.

DEP ECHO: no exit.

ATIS
377.475 (#8)

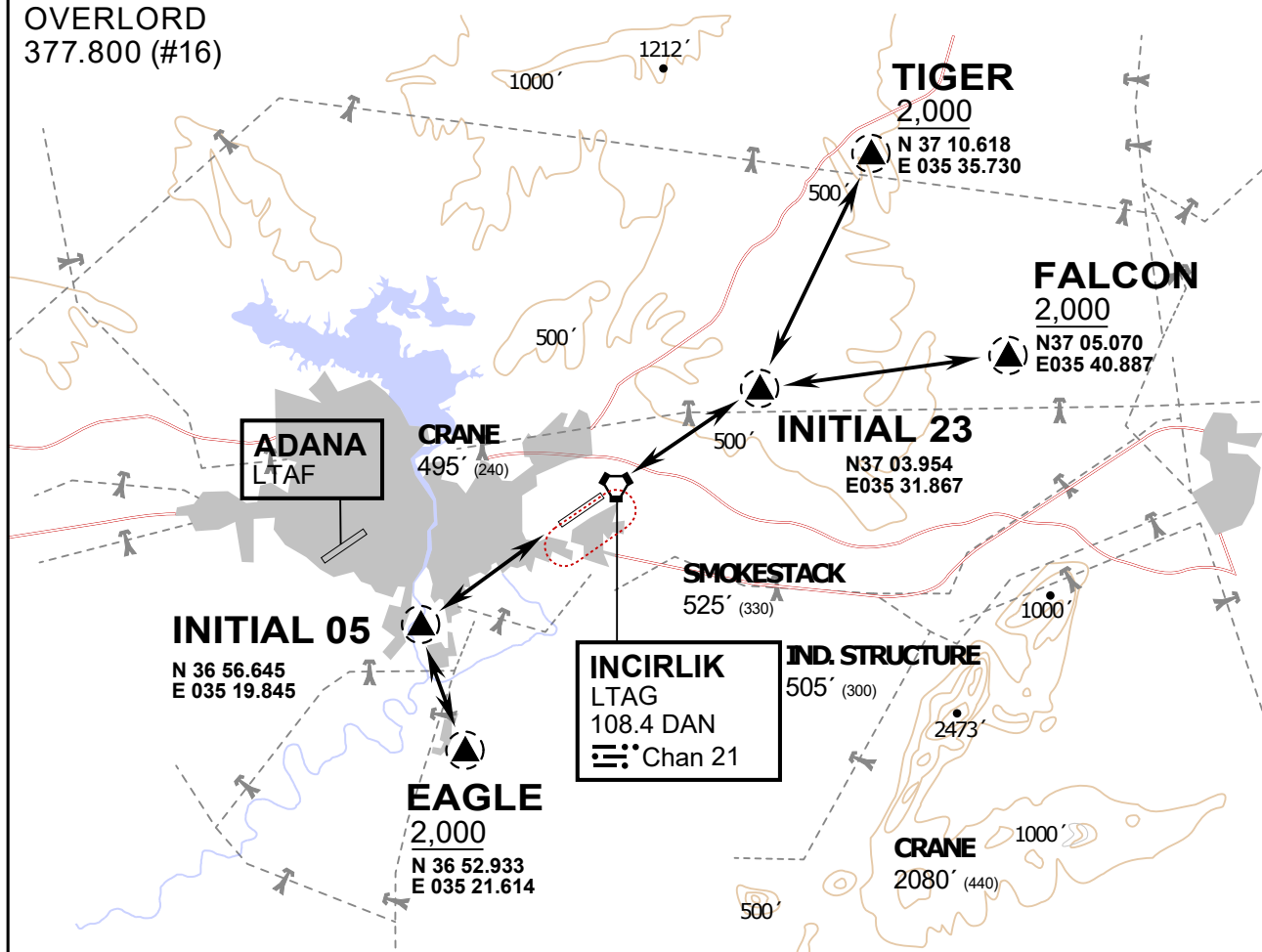
INCIRLIK GROUND
371.3500 (#7)

INCIRLIK TOWER
360.100 (#6)

OVERLORD
377.800 (#16)

NOT FOR CIVIL USE

CAUTION: If unable to comply
with restrictions advise ATC
prior to departure.



vJaBoG32 ETTR NAV CHART



ARR / DEP ROUTE DESCRIPTION

STRAIGHT-IN RWY 05 / 23

Pass entry EAGLE / TIGER / FALCON at 2000' and INITIAL at 1500'

OVERHEAD BREAK RWY 05 / 23

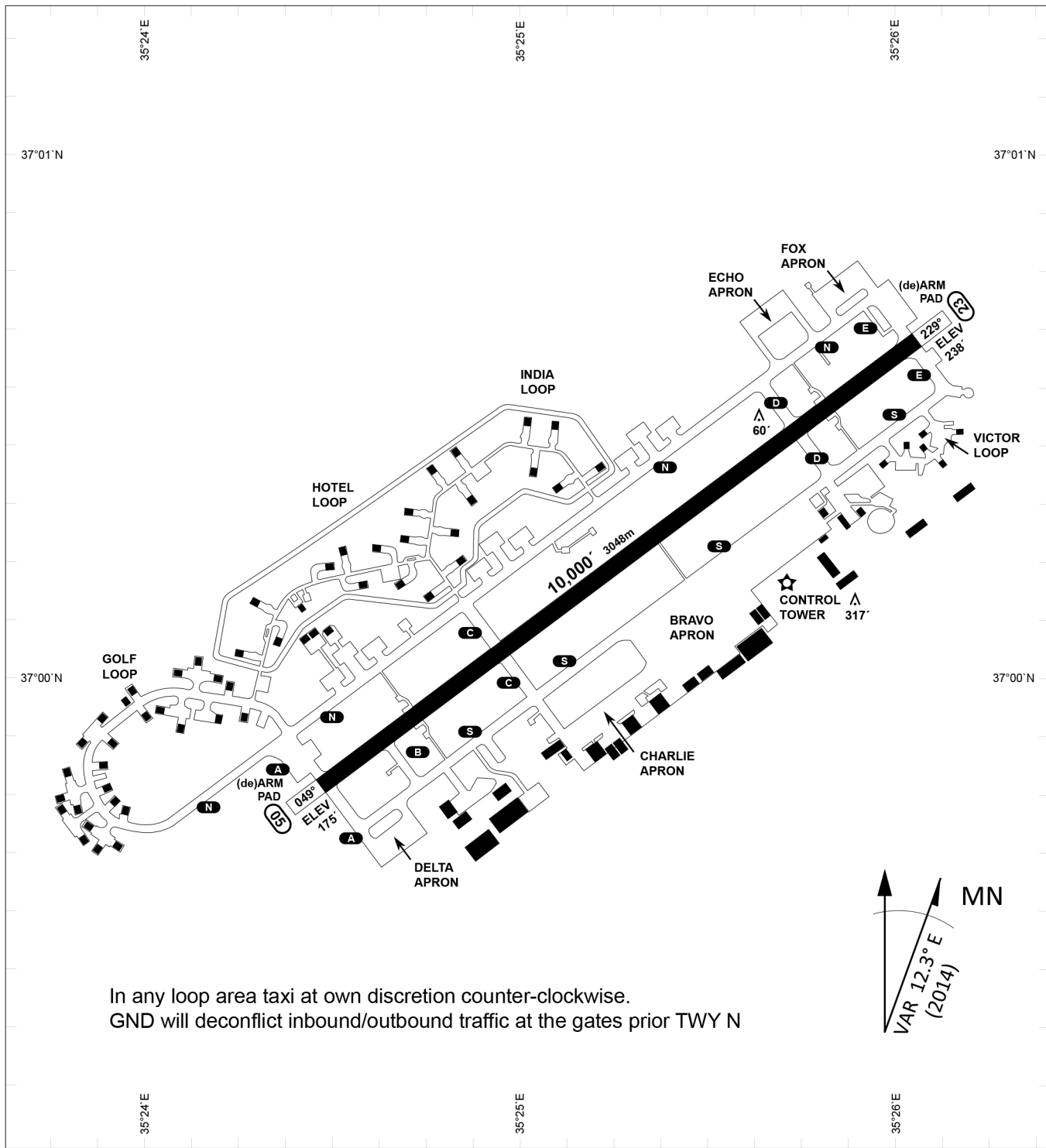
Pass entry EAGLE / TIGER / FALCON at 2500',
pass INITIAL at 2000' break to the south at 2000' pattern altitude.

HELICOPTER ROUTES

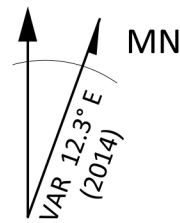
Pass entry EAGLE / TIGER / FALCON at 1000' or below, pass INITIAL at 1000' break to the south at 1000' pattern altitude.

DEPARTURE ALL DIRECTIONS

pass DER below 1500ft



In any loop area taxi at own discretion counter-clockwise.
 GND will deconflict inbound/outbound traffic at the gates prior TWY N



PAR	RWY	CAT	MINIMA	ARP	ELEV	Scale 1:35'500 0 300 600 900 1200 1500 [m] 0 1000 2000 3000 4000 5000 [ft]
SRA	21L 3R 21R 3L	A B D E A B D E A C D E A C D E	2057 - 0.8 200 (200-0.8/1.6) GS 3° 2057 - 0.8 200 (200-0.8/1.6) GS 3° 2257 - 1.2 350 (350-1.2/1.6) 2257 - 1.2 350 (350-1.2/1.6)	37°0'56.000" N 35°26'53.000" E	1857 [ft] 566 [m]	

RWY	TORA	TORA from D	TORA from B	COURSE	PSN THR	ALS
23	10,000 [ft] 3048 [m]	8,000 [ft] 2438 [m]		235°	37°00.611'N 035°26.368'E	⊙
05	10,000 [ft] 3048 [m]		9,000 [ft] 2743 [m]	055°	36°59.043'N 035°24.760'E	⊙

ATIS	INCIRLIK GROUND	INCIRLIK TOWER	CONTROL	TACAN	ILS RWY 05	ILS RWY 23
377.475	371.350 123.020	360.100 121.100	337.800	DAN21x	109.3MHz	111.7MHz