

MISSION DATA CARD

OPORD		Callsign		Mission		Date/Time		
2995/2024		Raptor 1		Training		141852JUN24		
Task						Freq		
AO						134.0		
Departure				Recovery				
RWY28 VFR				RWY10 VFR				
#	Callsign		Pilot		IFF	TCN	LSR	NET
-1	Raptor 1-1		Jinx		1611	1Y	1621	

LOADOUT

A/A						GUN	
A/G						CHF	
POD						FLR	
TKS						FUEL	

TOLD

	Takeoff	Target	Joker	Bingo	Land
FUEL	7163				

AIRBASES

	Name	TCN	ATIS	GND	TWR	RWY	Elev	ILS
Dep	Akrotiri AFB	107X	288.2	240.1	339.85	28	62	109.7
Arr	Akrotiri AFB	107X	288.2	240.1	339.85	28	62	109.7
Div	Paphos Internationl	79X	127.3		353.8	29	40	108.9

FLIGHTPLAN

#	Name	Navaid/Coords/DME	ALT	TOT
1	ECHO	N34 42.600 E033 10	5000	
2	PAPA	N34 39.390 E032 46.480	5000	

SUPPORT**Tanker**

Callsign	TCN	Freq	ALT	TAS
ARCO 1	22Y	319.8	FL222	400
Pos	ARCO1: (N3701 E03457)			

RADIO CHANNELS

#	Freq	Name
1		Flight/Squadron specific
2	288.2	Akrotiri ATIS
3	240.1	Akrotiri Ground
4	339.85	Aktrotiri Tower
5	335.05	Akrotiri Approach
6	360.1	Incirlik Tower
7	371.35	Incirlik Ground
8	377.475	Incirlik ATIS
9		No Preset
10	127.3	Paphos ATIS
11	353.8	Paphos Tower
12	304.0	CVN-73 George Washington
13	302.0	LHA-1 Tarawa
14	259.0	CV-59 Forrestal
15		No Preset
16	377.8	Overlord
17	265.0	KC-135 Texaco-1 medium/slow
18	319.8	KC-135 Arco-1
19	360.8	KC-135MPRS Arco-2
20	256.0	S-3B Recovery Tanker

RAMROD

0	1	2	3	4	5	6	7	8	9
P	A	T	C	H	W	O	R	K	S

KTC 1400 C

	0	1	2	3	4	5	6	7	8	9
A	RJWD	KTV	LEG	FM	CB	AXQ	SO	YN	PI	HU
B	HBAW	LDT	UKG	QE	YS	IFM	RO	PJ	NV	XC
C	EKOL	ICT	VWX	AN	QB	MFR	JS	GU	PD	HY
D	EFOY	VAG	RUK	WX	QT	JDB	PM	CL	NS	IH
E	PCFB	LNJ	GWS	MR	AE	YUH	QX	VD	IK	OT
F	EMLA	TSI	YGH	FU	VC	JRD	BK	OW	PX	QN
G	SUOC	HKM	AGE	YW	LP	DIF	JR	BQ	XT	NV
H	EHQL	JKB	XGO	YI	FN	AVR	CD	TM	SP	UW
I	ADUG	CMP	OXE	VQ	JH	BTR	LK	WI	SF	YN
J	SGTL	RKC	HPE	DB	JQ	NUV	XA	FW	YM	OI
K	SBCX	FHQ	RUD	GV	KE	PAT	YL	WN	MI	JO
L	JUFS	EOX	YWC	DK	PT	AVH	IB	QL	NM	GR
M	HNDW	PMY	TSJ	GX	FE	VAQ	KB	CI	RO	UL
N	HUEY	JBQ	MNG	DT	FO	IAS	PR	WX	KV	LC
O	UJDW	FAM	IQR	XL	BP	ETG	CV	NO	KH	YS
P	TXMN	YIK	JPW	DQ	CL	UHV	RO	BG	SF	AE
Q	UIOC	JDF	SPM	WR	NB	EXQ	YK	HG	TV	LA
R	KJNG	EMR	XUI	YD	OH	LVS	CP	BT	FA	QW
S	RIWU	MHY	LDX	FK	JN	QBT	OP	VE	AS	CG
T	UMOV	GSJ	KTN	XA	LC	WHI	DQ	FP	BY	ER
U	SXWY	HVP	JDE	UM	IC	RKO	LG	FT	NQ	AB
V	TUJQ	LNV	ICM	YF	PD	SAH	RX	WB	KO	GE
W	CJRU	FVH	OYW	DS	QG	MNI	LA	PX	EK	TB
X	KHFD	QRJ	VPN	CA	UT	WGY	MX	SI	BE	LO
Y	WFEP	DGR	VLA	MS	CN	HYB	TO	QK	IX	UJ

NAVAIDS

Id	Name	Channel	Position	Elevation
DAN	Incirlik	21	N37 00.950 E035 26.883	243
AKR	Akrotiri	107	N34 34.765 E032 57.769	147
PHA	Paphos	79	N34 42.997 E032 28.963	35
RMD	Ramat David	84	N32 39.892 E035 11.265	136
OS66	Kuweires Military Aviation Institute	36	N36 11.362 E037 34.226	1200

**FOR DCS
 USE ONLY**

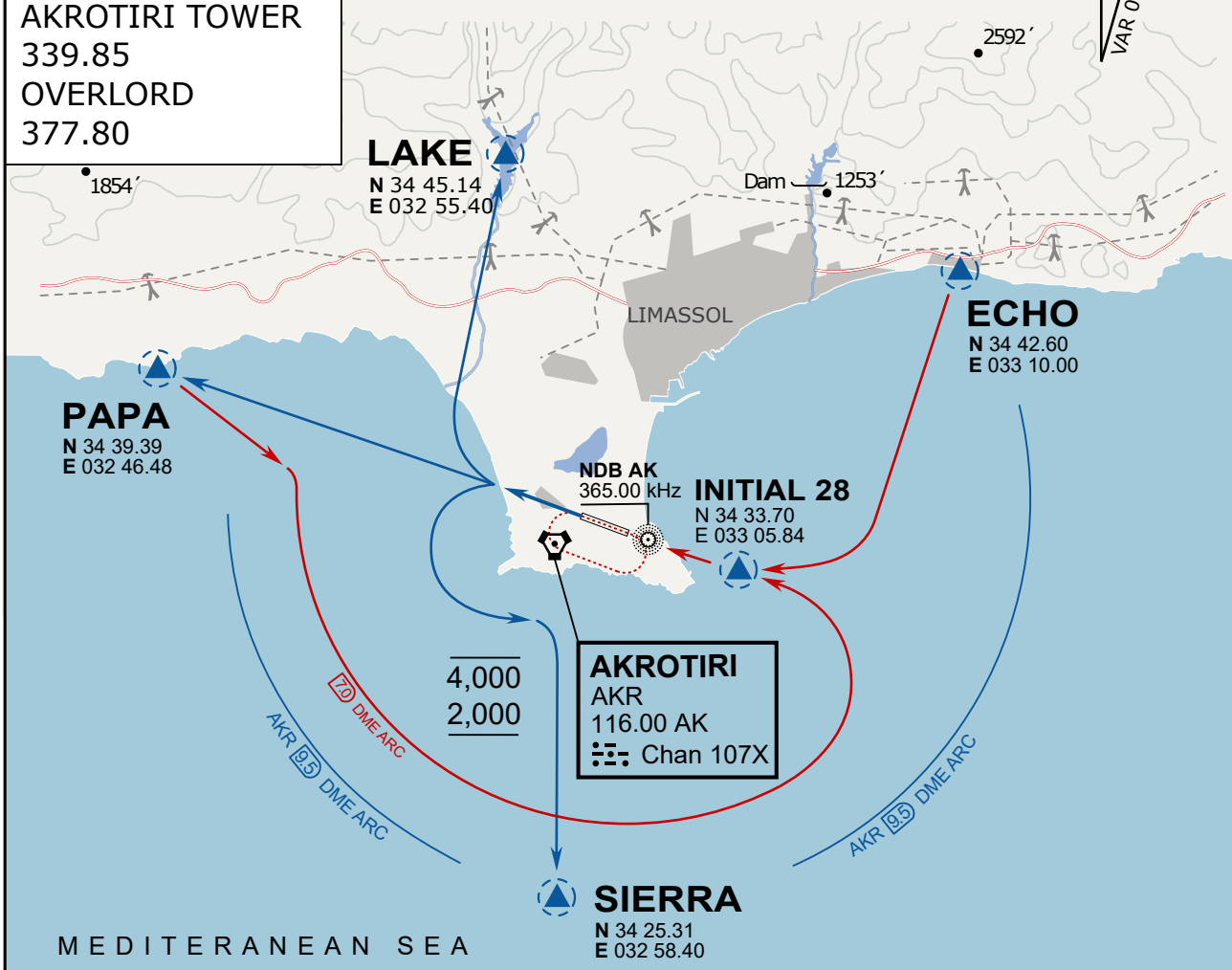


ATIS	AKROTIRI GND	AKROTIRI TWR	OVERLORD CONTROL	TACAN	FIELD ELEVATION
288.20 MHz	240.10 122.10	339.85 130.075	377.8	AKR 107X	75 [ft] 23 [m]

ATIS
 288.20
AKROTIRI GROUND
 240.10
AKROTIRI TOWER
 339.85
OVERLORD
 377.80

NOT FOR CIVIL USE

CAUTION: If unable to comply
 with restrictions advise ATC
 prior to departure.



ARR / DEP ROUTE DESCRIPTION

STRAIGHT-IN RWY28

Pass ENTRY at 5.000' MSL or below, pass INITIAL at 1.500' MSL or below.

OVERHEAD BREAK RWY28

Pass ENTRY at 5.000' MSL or below, pass INITIAL at 2.000' MSL, break to the south.

DEPARTURE GENERAL

Pass Departure end of runway at 1.000' or below.

DEP RWY28 PAPA: Fly straight ahead to exit.

DEP RWY28 LAKE: Fly straight ahead until coast, than right turn direct exit.

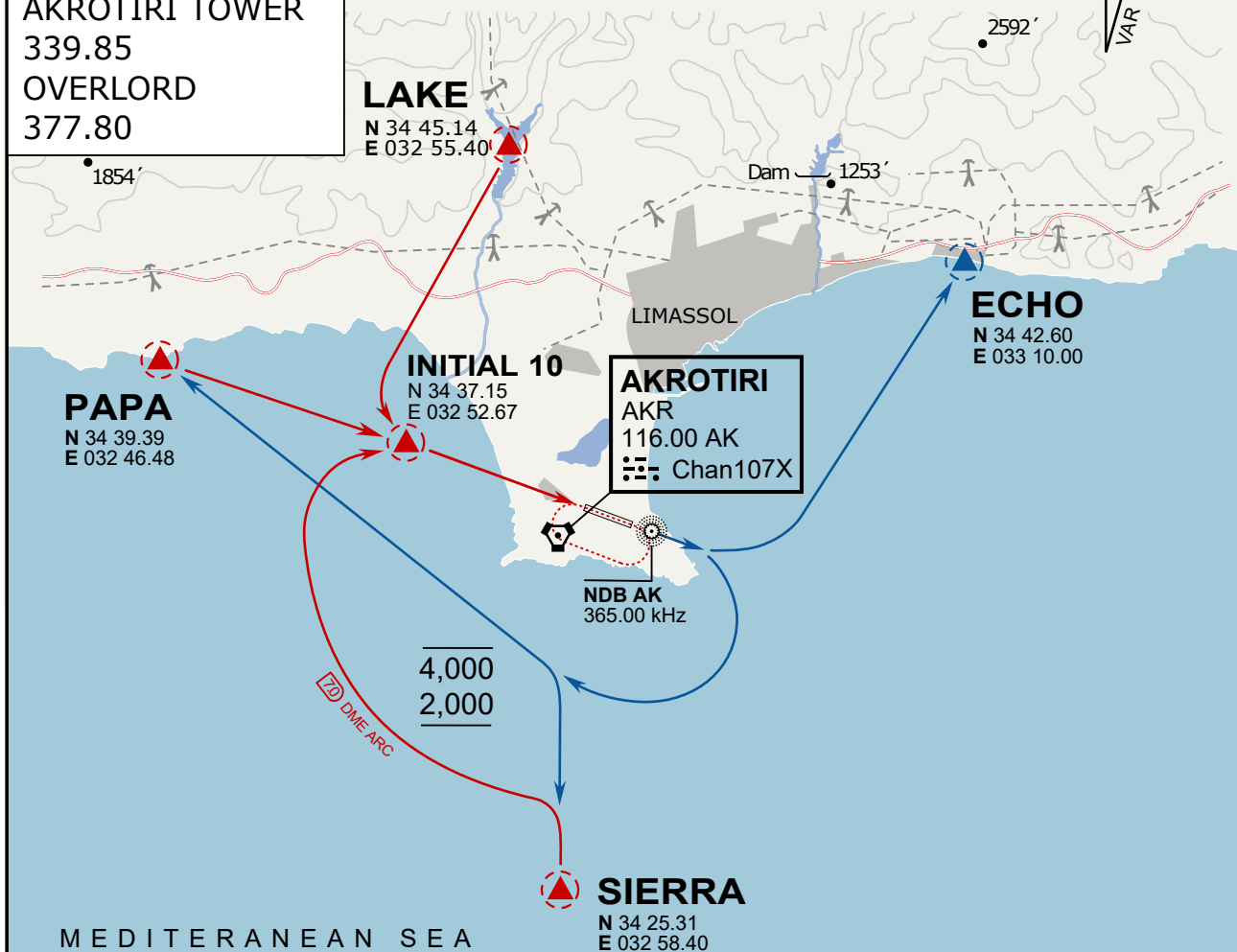
DEP RWY28 SIERRA: Fly straight ahead until coastline, then climbing left turn, intercept AKR R-180 to exit.

DEP ECHO: no exit.

ATIS
288.20
AKROTIRI GROUND
240.10
AKROTIRI TOWER
339.85
OVERLORD
377.80

NOT FOR CIVIL USE

CAUTION: If unable to comply with restrictions advise ATC prior to departure.



ARR / DEP ROUTE DESCRIPTION

ARRIVAL GENERAL

Pass Entry at 5.000' or below. Overhead Brake RWY 10: pass INITIAL 10 at 2.000' MSL.
Straight-in RWY 10 : pass INITIAL 1.500' or below.

ARR RWY10 PAPA / LAKE: Direct initial.

ARR RWY10 SIERRA: Intercept ARC 7 of AKR to INITIAL 10.

ARR ECHO: no ENTRY.

DEPARTURE GENERAL

Pass Departure end of runway at 1.000' AGL or below. Keep RWY heading until coastline.

DEP RWY10 ECHO: Direct EXIT.

DEP RWY10 SIERRA: Climbing right turn, intercept R180 AKR to Sierra.

DEP RWY10 PAPA: Climbing right turn until R180 AKR, then direct Papa

DEP LAKE: no EXIT.

NOT AVAILABLE

NOT AVAILABLE