

MISSION DATA CARD

OPORD		Callsign		Mission		Date/Time	
2991/2024		Nazgul 6		CAS		132000JUN24	
Task	CAS Workshop					Freq	
AO	R66					262.45	
Departure				Recovery			
FYTTR THREE				STRYK			
#	Callsign	Pilot	IFF	TCN	LSR	NET	
-1	Nazgul 6-1	Striver	1161	1Y	1561		
-2	Nazgul 6-2	Razorback/TaB	1162	64Y	1562		
-3	Nazgul 6-3	Repsus/Lempo	1163	64X	1563		

LOADOUT

A/A	2xA9M, 2xA120C			GUN	100% SAPHEI
A/G	2xG10, G24, 2xG31B			CHF	120
POD	TGT, NAV			FLR	60
TKS				FUEL	100%

TOLD

	Takeoff	Target	Joker	Bingo	Land
FUEL	22588				

AIRBASES

	Name	TCN	ATIS	GND	TWR	RWY	Elev	ILS
Dep	Nellis AFB	12X	270.1	275.8	327.0	21L	1850	109.1
Arr	Nellis AFB	12X	270.1	275.8	327.0	21L	1850	109.1

FLIGHTPLAN

#	Name	Navaid/Coords/DME	ALT	TOT
1	FYTTR	LSV 12X 269/33 (N36 21.440 W115 41.470)	14000	
2	IP	N37 17 W116 45	20000	
3	ECHO + TARGETs	N36 W116	20000	
4	T66.02	N35 34.828 W116 43.436	5000	
5	NW Container	N37 28.049 W115 59.961	20000	
6	NE Container	N37 28.049 W115 34.974	20000	
7	SE Container	N37 06.116 W115 34.912	20000	
8	SW Container	N37 06.067 W116 00.023	20000	
9	NIXON	LSV 12X 292/30 (N36 32.010 W115 32.250)	10000	
10	STRYK	LSV 12X 282/26 (N36 25.620 W115 30.700)	9500	
11	GASS PEAK	LSV 12X 309/12 (N36 24.140 W115 10.660)	8500	
12	APEX	LSV 12X 027/09 (N36 21.580 W114 54.340)	4500	
13	PHINN	N36 18.427 W114 57.408	4000	

NOTES

JTAC Playboy - 135.5

OTHER FLIGHTS

Callsign	Mission	Airframe	Freq	TCN	Grpld	Laser
Jedi* 6	Training	4x AH-64D	133.5	1/64		125X
AO	R62	Task				
Monster 2	Training	4x A-10C	132.25	1/64	25	165X
AO	Range 62	Task	CAS TRAINING			
Tiger 4	Training	2x F/A-18C	264.35	1/64		155X
AO		Task				
Playboy*	Training	2x Ground	135.5	1/64		170X
AO	R66	Task	JTAC			
Wizzard	Training	2x Ground	35.25	1/64		170X
AO	R62	Task	JTAC			

RADIO CHANNELS

#	Freq	Name
1		Flight/Squadron specific
2	289.4	Nellis Clearance Delivery
3	275.8	Nellis Ground
4	327.0	Nellis Tower
5	385.4	Nellis Approach/Departure West
6	273.55	Nellis Approach/Departure East
7	317.525	Nellis Control -- Sally
8	254.4	Nellis Control-- Lee
9	305.6	SOF Bullseye
10	343.725	EMERGENCY SINGLE FRQ
11	270.1	Nellis ATIS
12	360.625	Creech AFB Tower
13	250.1	HAVE QUICK 13
14	251.1	HAVE QUICK 14
15	252.1	HAVE QUICK 15
16	377.8	Blackjack
17	265.0	KC-135 AR-641A
18	360.8	KC-135MPRS AR-635
19	319.8	KC-135MPRS AR-625
20	300.05	KC-135 AR-231V

RAMROD

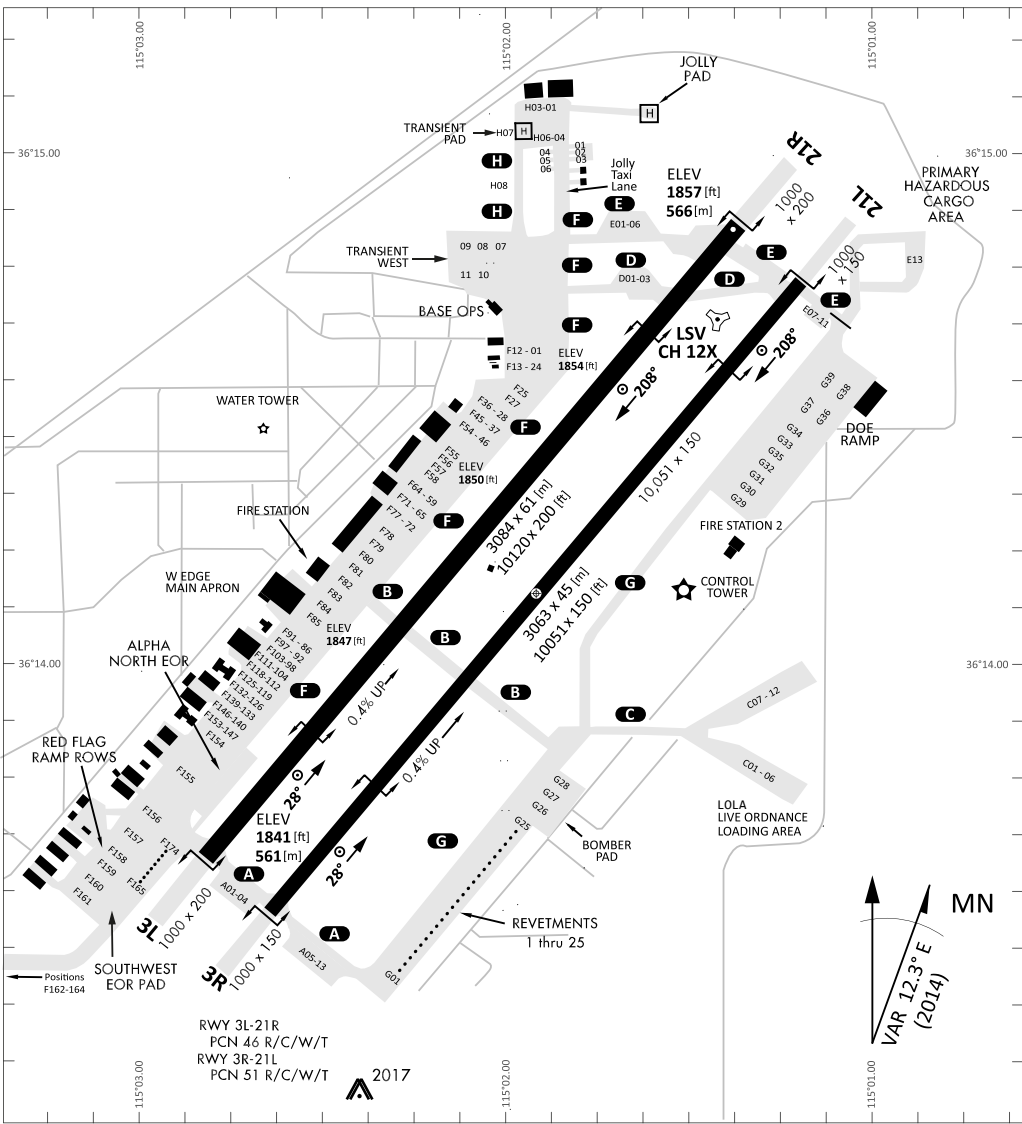
0	1	2	3	4	5	6	7	8	9
B	A	C	K	S	L	I	D	E	R

KTC 1400 C

	0	1	2	3	4	5	6	7	8	9
A	IALX	EHP	OUS	DV	NT	WKC	GQ	MJ	BF	RY
B	HAJQ	XIR	OPD	LE	WB	MTC	SN	UY	FG	KV
C	GBWO	EQV	DTH	AI	US	FNL	XK	JP	CR	YM
D	BAJI	WEF	SOH	QL	UK	XMV	PY	GN	DR	TC
E	FWCI	ABR	PDV	HS	YO	TLJ	EG	NK	MU	QX
F	EMCN	YTK	IUO	RF	BD	XJG	WA	VH	LS	QP
G	RAIH	TKS	VWX	OF	BY	CDM	UP	GQ	EN	JL
H	ROKM	QNY	VJF	AS	CT	BED	GH	WL	UX	PI
I	WBER	SPD	FLQ	JN	VM	IHC	XO	GA	TU	YK
J	UCPL	WKI	XQY	VA	NJ	MSH	EO	BT	RD	GF
K	VSEY	ROQ	XCI	BT	WF	JDG	AL	KU	PH	NM
L	QUYP	LWX	JOV	KF	BN	HTD	EG	RS	CM	IA
M	WNIK	OLP	JDX	YV	BM	GCQ	HU	SA	FT	RE
N	XLBI	WSF	QJU	DV	KG	MEC	YT	AN	HR	PO
O	XLVY	JQT	BCN	FI	OE	DWK	PH	AS	UM	GR
P	JDFC	SXL	BUV	ON	RP	HMI	WG	EQ	TY	AK
Q	FAIK	VUC	XQO	WN	EL	TMH	SJ	GP	RY	DB
R	SUJV	TGW	LKF	QP	AX	HBN	RE	MY	OI	CD
S	HXMU	BCJ	GFO	TV	WP	EIK	RA	NY	SQ	DL
T	JWRL	QOE	GUY	IF	VT	XSP	BD	CN	KM	AH
U	HKYG	DQW	XCE	JI	SP	TOU	NL	RB	AV	MF
V	QRKY	LXG	VFD	PN	ET	IJA	HC	MO	UB	WS
W	HBDW	AKN	RXL	UJ	MS	YCO	FG	VE	PQ	TI
X	ODPH	YIM	FEU	GB	VX	AKQ	WS	NC	JL	RT
Y	BFUC	VQM	HXW	IL	OE	KYT	GJ	RP	ND	SA

NAVAIDS

Id	Name	Channel	Position	Elevation
BCE	Bryce Canyon	75	N3741.35 W11218.23	9040
BIH	Bishop	33	N3722.62 W11821.99	4114
BLD	Boulder	114	N3559.75 W11451.82	3650
BTY	Beatty	94	N3648.54 W11644.86	2925
CDC	Cedar City	120	N3747.24 W11304.90	5463
DAG	Daggett	79	N3457.75 W11634.69	1760
EED	Needles	99	N3445.96 W11428.43	650
GFS	Goffs	91	N3507.87 W11510.59	4019
GRL	Groom Lake	18	N3713.91 W11548.16	4475
HEC	Hector	74	N3447.83 W11627.78	1854
ILC	Wilson Creek	110	N3815.02 W11423.65	9318
INS	Creech AFB	87	N3635.20 W11540.12	3101
LAS	McCarran Intl	116	N3604.78 W11509.59	2142
LSV	Nellis	12	N3614.68 W11501.50	1864
MLF	Milford	58	N3821.62 W11300.79	4977
MMM	Mormon Mesa	90	N3646.16 W11416.65	2120
MVA	Mina	98	N3833.92 W11801.97	7860
OAL	Coale Dale	124	N3800.20 W11746.23	4800
PGS	Peach Springs	57	N3537.48 W11332.67	4754
TPH	Tonopah Muni	119	N3801.84 W11702.01	5330
TQQ	Silverbow	77	N3748.00 W11647.00	5500
UTI	St George	23	N3705.29 W11335.53	2871



RWY 3L-21R
 PCN 46 R/C/W/T
 RWY 3R-21L
 PCN 51 R/C/W/T
 2017

PAR	RWY	CAT	MINIMA	ARP	ELEV	Scale
	21L	A B D E	2057 - 0.8 200 (200-0.8/1.6) GS 3°	36° 14.060° N 115° 01.058° W	1857 [ft] 566 [m]	0 300 600 900 1200 1500 [m] 0 1000 2000 3000 4000 5000 [ft]
	3R	A B D E	2057 - 0.8 200 (200-0.8/1.6) GS 3°			
	21R	A C D E	2257 - 1.2 350 (350-1.2/1.6)			
	3L	A C D E	2257 - 1.2 350 (350-1.2/1.6)			

RWY	TORA	TODA	ASDA	LDA	PSN	THR	ALS
21L	10051 [ft] 3063 [m]	11051 [ft] 3368 [m]	11051 [ft] 3368 [m]	10051 [ft] 3063 [m]	36°14.043' N	115°01.018' W	⊕
3R	10120 [ft] 3084 [m]	11120 [ft] 3398 [m]	11120 [ft] 3398 [m]	10120 [ft] 3084 [m]	36°13.029' N	115°02.038' W	

ATIS	NELLIS GROUND	NELLIS TOWER	NELLIS CONTROL	TACAN	ILS RWY 21L	NELLIS EAST	NELLIS WEST
270.100 MHz	275.800 121.800	327.000 132.55	317.525	LSV 12X	109.10 Mhz	384.400	385.000

FYTTTR THREE DEPARTURE IFR CHART | VALID 2014 LAS VEGAS, NEVADA

ATIS
270.100
NELLIS GROUND
275.800
NELLIS TOWER
327.000
NELLIS CONTROL
317.525
NELLIS DEP/APP EAST
384.400
BLACKJACK
377.800



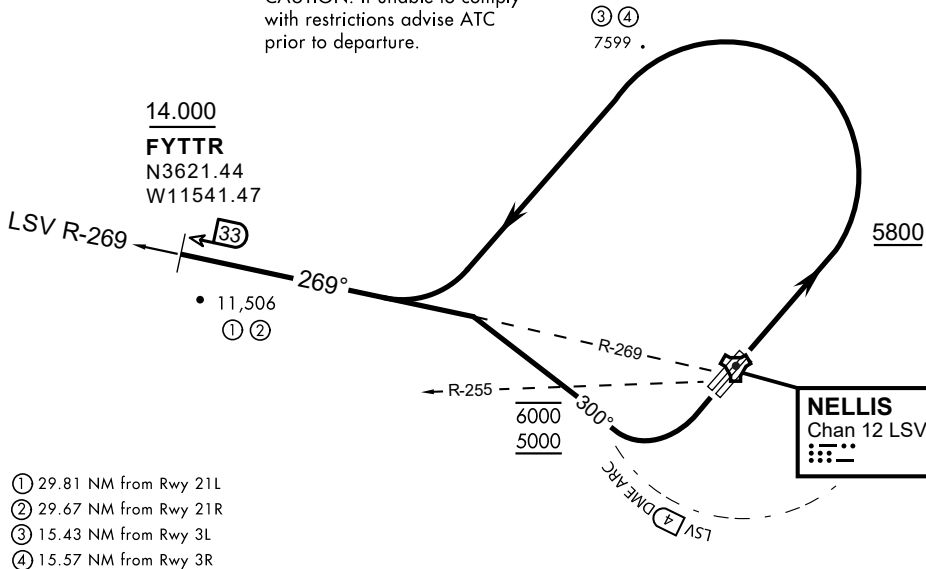
Rwy	Knots	60	120	180	240	300	360
3L (a)	V/V(fpm)	394	788	1182	1576	1970	2364
3R (a)	V/V(fpm)	392	784	1176	1568	1960	2352
21L (b)	V/V(fpm)	388	776	1164	1552	1940	2328
21R (b)	V/V(fpm)	390	780	1170	1560	1950	2340

Minimum Climb Rate

(a) to 9300

(b) to 13 500

CAUTION: If unable to comply with restrictions advise ATC prior to departure.



- ① 29.81 NM from Rwy 21L
- ② 29.67 NM from Rwy 21R
- ③ 15.43 NM from Rwy 3L
- ④ 15.57 NM from Rwy 3R

DEPARTURE ROUTE DESCRIPTION

TAKEOFF RWY 3L/R

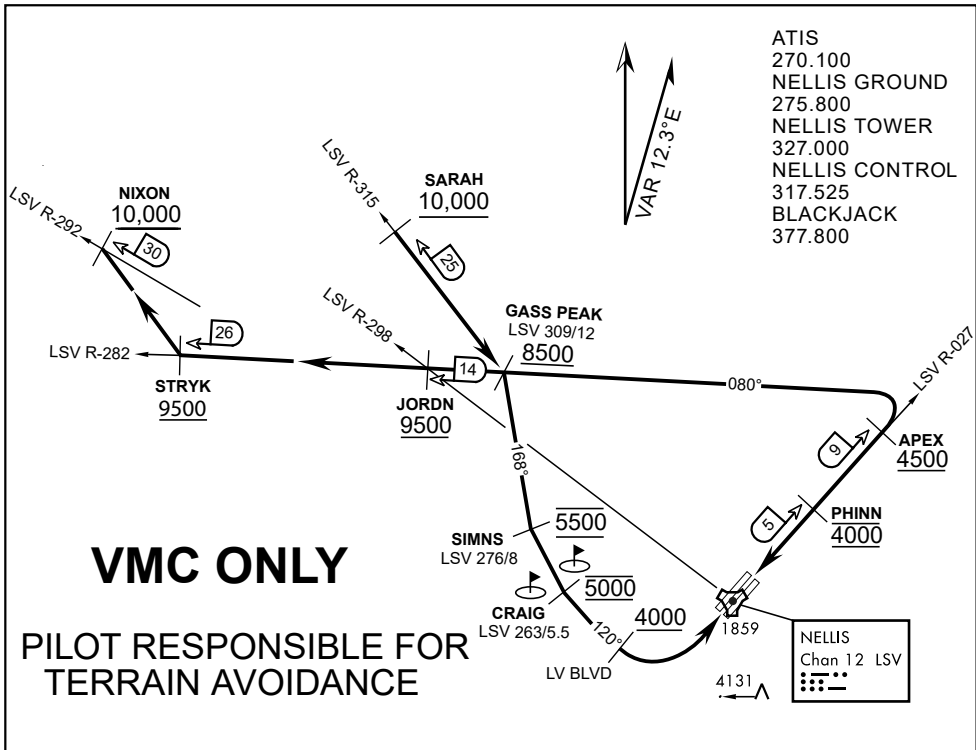
- Fly runway heading until reaching 5,800'.
- Then climbing left turn to intercept LSV TACAN R-269 outbound.
- Cross FYTTTR at or above 14,000' or as assigned, then via assigned route.

TAKEOFF RWY 21L/21R

- Turn right to intercept LSV TACAN R-269 outbound.
- Remain within LSV 4 DME until joining LSV R-269
- Cross R-255 between 5,000' and 6,000'.
- Cross FYTTTR at or above 14,000' or as assigned, then via assigned route.

NOISE ABATEMENT PROCEDURES:

Fly according Nellis Noise Abatement instructions as published



APPROACH ROUTE DESCRIPTION

APPROACH RWY 3L/R

Cross STRYK at or above 9,500' MSL, proceed direct GASS PEAK. Cross JORDN at or above 9,500' MSL, cross GASS PEAK at or above 8,500' MSL. Proceed direct SIMNS and cross at 5,500' MSL. Cross Las Vegas Blvd at or above 4,000' MSL then to 3,500' MSL for Initial. Remain within 4 DME if LSV on turn to final.

VFR STRAIGHT-IN RWY 3L/R

Depart CRAIG & descend to be at 3,000' MSL by Las Vegas Blvd. Do not descend below 3,000' MSL until within 5 DME of LSV or 4 NM of the runway on turn to final.

APPROACH RWY 21L/R

Cross STRYK at or above 9,500' MSL, proceed direct GASS PEAK. Cross JORDN at or above 9,500' MSL, cross GASS PEAK at or above 8,500' MSL. Cross APEX at or above 4,500' MSL then direct 5NM initial. Descend to cross PHINN at 4,000' MSL, Inside 5 NM descend to 3,500' MSL.

VFR STRAIGHT-IN RWY 21L/R

Cross APEX at 4,000' MSL. Descend to be at 3,000' MSL at PHINN. Descend to 3,000' MSL at LSV 027/5.

RANGE 63B EXIT

SOUTH: Via NIXON at or above 10,000' MSL, then direct STRYK.

EAST: Via SARAH at or above 10,000' MSL, then direct GASS PEAK.