

**MISSION DATA CARD**

OPORD		Callsign		Mission		Date/Time		
2983/2024		Tiger 2		Training		102030JUN24		
Task	Tecnical Check Fligh					Freq		
AO						261.15		
Departure				Recovery				
CAT				CASE I				
#	Callsign		Pilot		IFF	TCN	LSR	NET
-1	Tiger 2-1		SNAFU		1021	1Y	1551	

**LOADOUT**

A/A	2xA9X, 5xA120C				GUN	100% HEI-T	
A/G					CHF	120	
POD	TGP				FLR	0	
TKS	3xFPU-8A				FUEL	100%	

**TOLD**

	Takeoff	Target	Joker	Bingo	Land
FUEL	17535				

**AIRBASES**

	Name	TCN	ATIS	GND	TWR	RWY	Elev	ILS
Dep	CVN-73 USS G. Washington	55X		ICLS 12	304.0			
Arr	CVN-73 USS G. Washington	55X		ICLS 12	304.0			
Div	Akrotiri AFB	107X	288.2	240.1	339.85	28	62	109.7

## NOTES

Technische Überprüfung Soft- und Hardware  
CV Ops  
Radar Work

**SUPPORT****Tanker**

Callsign	TCN	Freq	ALT	TAS
ARCO 2	41Y	360.8	FL220	400
	Pos	ARCO2: (N3653 E03452)		

**AWACS**

Callsign	Freq	ALT	Pos
OVERLORD2	377.8	FL320	N3713 E03643 - N3714 E03749

**OTHER FLIGHTS**

Callsign	Mission	Airframe	Freq	TCN	Grpld	Laser
Raptor 1	Training	4x F-16C	134.0	1/64		162X
AO	BVR RANGE	Task	BVR SORTING			

**RADIO CHANNELS**

#	Freq	Name
1		Flight/Squadron specific
2	288.2	Akrotiri ATIS
3	240.1	Akrotiri Ground
4	339.85	Aktrotiri Tower
5	335.05	Akrotiri Approach
6	360.1	Incirlik Tower
7	371.35	Incirlik Ground
8	377.475	Incirlik ATIS
9		No Preset
10	127.3	Paphos ATIS
11	353.8	Paphos Tower
12	304.0	CVN-73 George Washington
13	302.0	LHA-1 Tarawa
14	259.0	CV-59 Forrestal
15		No Preset
16	377.8	Overlord
17	265.0	KC-135 Texaco-1 medium/slow
18	319.8	KC-135 Arco-1
19	360.8	KC-135MPRS Arco-2
20	256.0	S-3B Recovery Tanker

**RAMROD**

0	1	2	3	4	5	6	7	8	9
L	U	N	C	H	T	I	M	E	S

**KTC 1400 C**

	0	1	2	3	4	5	6	7	8	9
A	RMEB	IXO	GNY	CD	FU	QJK	AW	HT	PL	SV
B	BCKY	DSI	QAO	RP	JU	XLW	NT	GM	HV	EF
C	LGCB	RDJ	WHX	OM	VU	FAY	NI	KE	QS	PT
D	APHT	OVI	QGE	JU	LY	MWN	SF	CD	RK	BX
E	XEFB	JCU	GHV	LI	KP	TOD	QM	NR	WY	SA
F	APTR	NKY	XSE	IB	CU	VWM	JF	LH	DO	GQ
G	QGJA	YHU	OTK	SR	MP	DEX	IC	WV	NF	LB
H	LEOF	VIM	WKH	TA	DJ	UGQ	CR	YS	PN	BX
I	UFCG	WJS	TXL	OE	VR	YQN	IA	HD	PB	KM
J	AUGO	NQK	YTD	JS	BX	MIC	RF	PW	EH	VL
K	BVDT	FWU	IXL	EH	OP	AGC	KJ	QR	SN	YM
L	XCBY	THP	NSG	IU	ER	JAF	MW	QL	VK	OD
M	DMYK	ALC	ENP	VR	OI	GBW	TJ	HU	XS	FQ
N	ISWC	XRH	KYB	JT	QM	END	FA	VO	LU	PG
O	YJDT	LXR	IHB	SQ	PO	ACF	NW	UG	KV	ME
P	GHUD	WXR	VCF	TQ	AO	NJI	YS	KM	LE	BP
Q	BJYF	IMK	NXL	GR	VQ	OEU	CH	DA	PT	WS
R	YIUG	CBN	APO	ER	WJ	XMD	VQ	HF	KL	TS
S	SBMG	CJL	UOV	EN	PK	TAR	WX	YI	HD	QF
T	MKHG	PJL	YCB	VE	AF	SUI	ND	WR	QO	XT
U	NTAQ	RSX	UJF	KD	GM	WHO	BC	EP	IL	VY
V	TAEP	MYN	CFK	SI	WO	JBV	DR	LG	HQ	UX
W	YGLN	MOQ	BCI	RJ	HD	PUE	AV	KT	FS	XW
X	QITN	EBY	XWF	OV	PR	CMD	AG	LS	HJ	UK
Y	AVUP	RLC	BON	FJ	SD	HIT	QX	MG	EK	YW

**NAVAIDS**

<b>Id</b>	<b>Name</b>	<b>Channel</b>	<b>Position</b>	<b>Elevation</b>
DAN	Incirlik	21	N37 00.950 E035 26.883	243
AKR	Akrotiri	107	N34 34.765 E032 57.769	147
PHA	Paphos	79	N34 42.997 E032 28.963	35
RMD	Ramat David	84	N32 39.892 E035 11.265	136
OS66	Kuweires Military Aviation Institute	36	N36 11.362 E037 34.226	1200





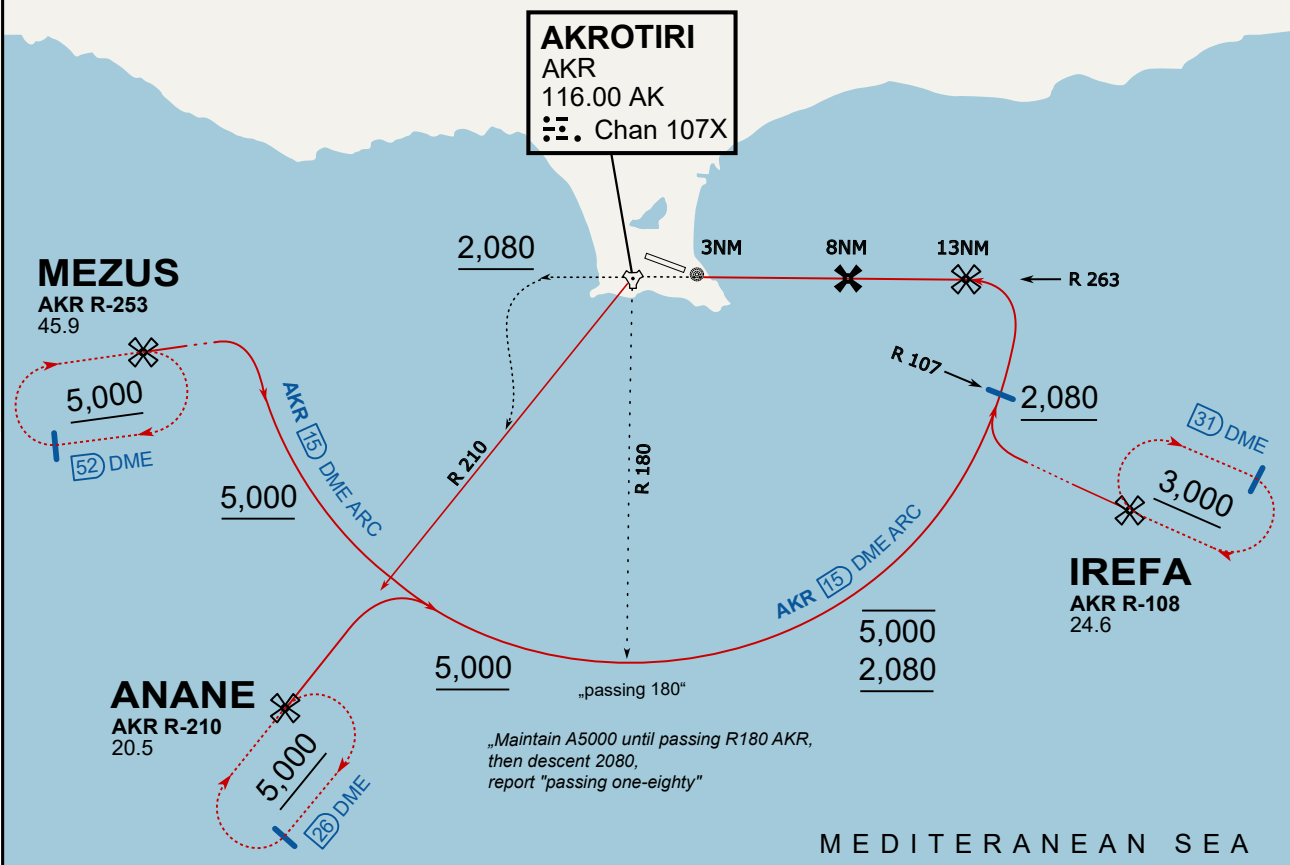




**ATIS**  
 288.200  
**AKROTIRI GROUND**  
 122.100  
**AKROTIRI TOWER**  
 339.850  
**APP (OVERLORD)**  
 377.800

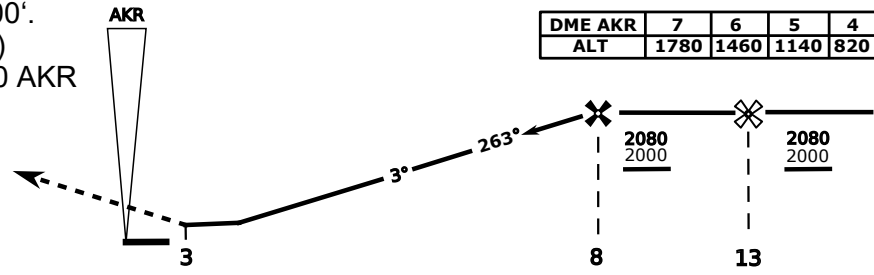
## NOT FOR CIVIL USE

CAUTION: If unable to comply with restrictions advise ATC prior to departure.



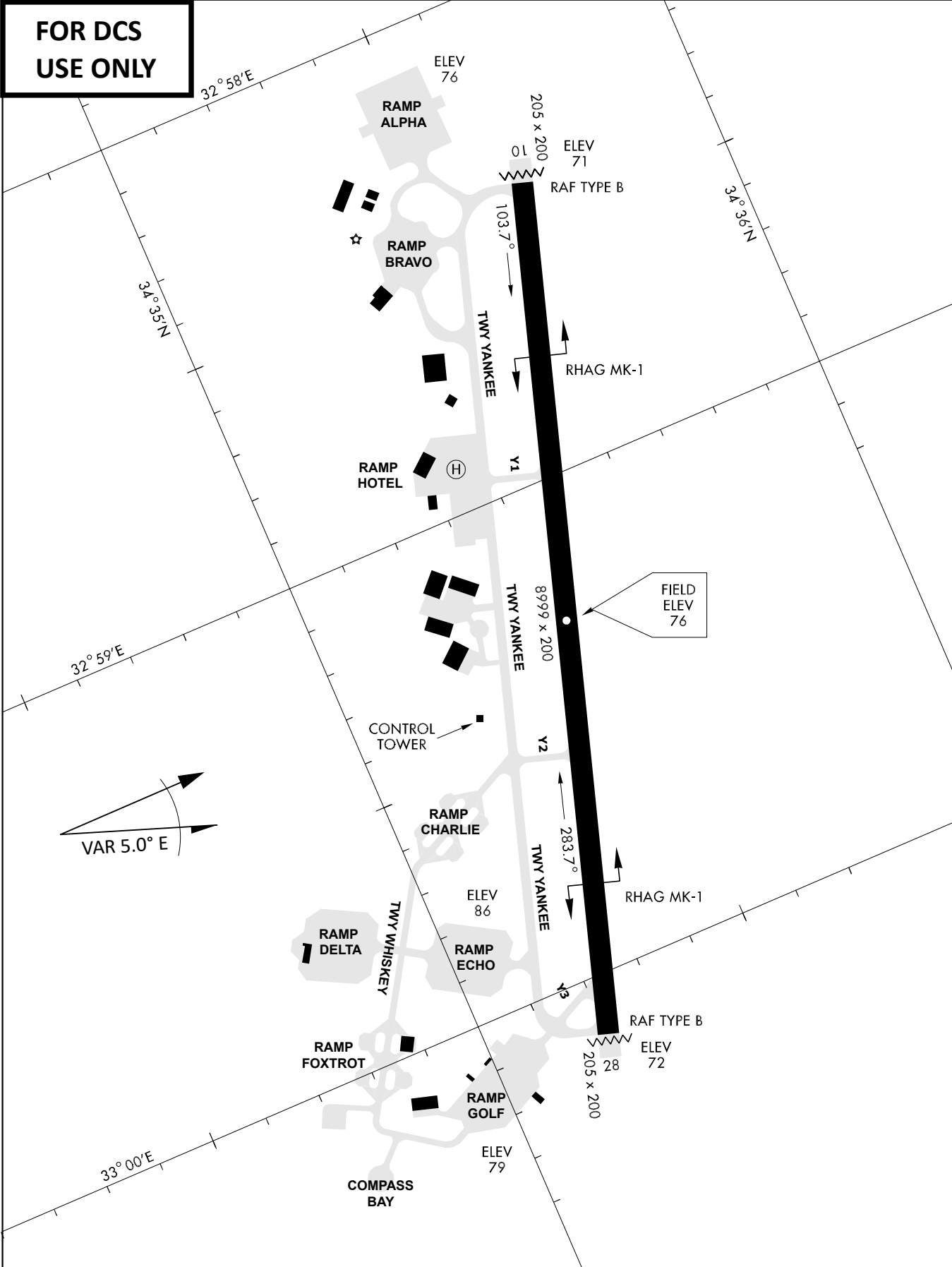
vJaBoG32 ETRR NAV CHART

On Track 263° climb A 4.000'.  
 passing 2.080' (2.000' AAL)  
 turn left and intercept R-210 AKR  
 to ANANE.  
 Enter ANANE Holding.



CAT	TAC	CIRCLE	GS (kts)	80	120	150	180	210	
A	500(430)	680 (610) 2000m	FAF - MAPt (4.1NM)	3:06	2:03	1:38	1:22	1:10	
B	1300m		RoD (fpm)	420	640	800	950	1110	
C	780 (710) 2600m	N/A	- CIRCLING PROHIBITED N of Rwy						
D			780 (710) 3600m	- final track is offset 20° right of RCL and Intcp 1.1NM before THR					
E			1380 (1310) 5000m	- when established on final contact tower					
			- Timing not Auth to define MAPt						

**FOR DCS  
 USE ONLY**



ATIS	AKROTIRI GND	AKROTIRI TWR	OVERLORD CONTROL	TACAN	FIELD ELEVATION
288.20 MHz	240.10   122.10	339.85   130.075	377.8	AKR 107X	<b>75 [ft] 23 [m]</b>