

**MISSION DATA CARD**

OPORD		Callsign		Mission		Date/Time		
2982/2024		Tiger 1		Training		102000JUN24		
Task						Freq		
AO	64 A/B/C. BEATTY REVEILLE					261.15		
Departure				Recovery				
FYTTR THREE				HI-TACAN Z RWY 21L				
#	Callsign		Pilot		IFF	TCN	LSR	NET
-1	Tiger 1-1		Kosmoss		1011	1Y	1551	

**LOADOUT**

A/A	2xA9X, 2xA120C				GUN	100% HEI-T	
A/G	2xM82				CHF	120	
POD					FLR	0	
TKS	FPU-8A				FUEL	100%	

**TOLD**

	Takeoff	Target	Joker	Bingo	Land
FUEL	13047				

**AIRBASES**

	Name	TCN	ATIS	GND	TWR	RWY	Elev	ILS
Dep	Nellis AFB	12X	270.1	275.8	327.0	21L	1850	109.1
Arr	Nellis AFB	12X	270.1	275.8	327.0	21L	1850	109.1
Div	Nellis AFB	12X	270.1	275.8	327.0	21L	1850	109.1

**FLIGHTPLAN**

#	Name	Navaid/Coords/DME	ALT	TOT
1	FYTTR	LSV 269/33 (N36 21.440 W115 41.470)	22000	
2	BTY	N36 48.035 W116 44.858	22000	
3	Groom Lake	INS 339/42 (N37 16.500 W115 48)	22000	
4	DUDBE	N36 21.849 W115 20.581	22000	

**COMMS**

Radio	Usage
1	3,4,16,4,3
2	377.8

**SUPPORT****Tanker**

Callsign	TCN	Freq	ALT	TAS
ARCO 1	113Y	319.8	FL250	450
	Pos	AR-625: MVA 168/77 (N3717 W11802)		
SHELL 2	115Y	360.8	FL250	430
	Pos	AR-635: MLF 260/127 (N3831 W11542)		

**OTHER FLIGHTS**

Callsign	Mission	Airframe	Freq	TCN	Grpld	Laser
Claw 5	Training	3x AH-64D	133.5	1/64		125X
AO	Range 63	Task	CAS			
Monster 2	Training	4x A-10C	132.25	1/64	25	165X
AO	Range 64	Task	CAS TRAINING			
Edelweiss 6	Training	1x F/A-18C	134.65	1/64	40	166X
AO		Task				

**RADIO CHANNELS**

#	Freq	Name
1		Flight/Squadron specific
2	289.4	Nellis Clearance Delivery
3	275.8	Nellis Ground
4	327.0	Nellis Tower
5	385.4	Nellis Approach/Departure West
6	273.55	Nellis Approach/Departure East
7	317.525	Nellis Control -- Sally
8	254.4	Nellis Control-- Lee
9	305.6	SOF Bullseye
10	343.725	EMERGENCY SINGLE FRQ
11	270.1	Nellis ATIS
12	360.625	Creech AFB Tower
13	250.1	HAVE QUICK 13
14	251.1	HAVE QUICK 14
15	252.1	HAVE QUICK 15
16	377.8	Blackjack
17	265.0	KC-135 AR-641A
18	360.8	KC-135MPRS AR-635
19	319.8	KC-135MPRS AR-625
20	300.05	KC-135 AR-231V

**RAMROD**

0	1	2	3	4	5	6	7	8	9
L	U	N	C	H	T	I	M	E	S

**KTC 1400 C**

	0	1	2	3	4	5	6	7	8	9
A	RMEB	IXO	GNY	CD	FU	QJK	AW	HT	PL	SV
B	BCKY	DSI	QAO	RP	JU	XLW	NT	GM	HV	EF
C	LGCB	RDJ	WHX	OM	VU	FAY	NI	KE	QS	PT
D	APHT	OVI	QGE	JU	LY	MWN	SF	CD	RK	BX
E	XEFB	JCU	GHV	LI	KP	TOD	QM	NR	WY	SA
F	APTR	NKY	XSE	IB	CU	VWM	JF	LH	DO	GQ
G	QGJA	YHU	OTK	SR	MP	DEX	IC	WV	NF	LB
H	LEOF	VIM	WKH	TA	DJ	UGQ	CR	YS	PN	BX
I	UFCG	WJS	TXL	OE	VR	YQN	IA	HD	PB	KM
J	AUGO	NQK	YTD	JS	BX	MIC	RF	PW	EH	VL
K	BVDT	FWU	IXL	EH	OP	AGC	KJ	QR	SN	YM
L	XCBY	THP	NSG	IU	ER	JAF	MW	QL	VK	OD
M	DMYK	ALC	ENP	VR	OI	GBW	TJ	HU	XS	FQ
N	ISWC	XRH	KYB	JT	QM	END	FA	VO	LU	PG
O	YJDT	LXR	IHB	SQ	PO	ACF	NW	UG	KV	ME
P	GHUD	WXR	VCF	TQ	AO	NJI	YS	KM	LE	BP
Q	BJYF	IMK	NXL	GR	VQ	OEU	CH	DA	PT	WS
R	YIUG	CBN	APO	ER	WJ	XMD	VQ	HF	KL	TS
S	SBMG	CJL	UOV	EN	PK	TAR	WX	YI	HD	QF
T	MKHG	PJL	YCB	VE	AF	SUI	ND	WR	QO	XT
U	NTAQ	RSX	UJF	KD	GM	WHO	BC	EP	IL	VY
V	TAEP	MYN	CFK	SI	WO	JBV	DR	LG	HQ	UX
W	YGLN	MOQ	BCI	RJ	HD	PUE	AV	KT	FS	XW
X	QITN	EBY	XWF	OV	PR	CMD	AG	LS	HJ	UK
Y	AVUP	RLC	BON	FJ	SD	HIT	QX	MG	EK	YW

**NAVAIDS**

<b>Id</b>	<b>Name</b>	<b>Channel</b>	<b>Position</b>	<b>Elevation</b>
BCE	Bryce Canyon	75	N3741.35 W11218.23	9040
BIH	Bishop	33	N3722.62 W11821.99	4114
BLD	Boulder	114	N3559.75 W11451.82	3650
BTY	Beatty	94	N3648.54 W11644.86	2925
CDC	Cedar City	120	N3747.24 W11304.90	5463
DAG	Daggett	79	N3457.75 W11634.69	1760
EED	Needles	99	N3445.96 W11428.43	650
GFS	Goffs	91	N3507.87 W11510.59	4019
GRL	Groom Lake	18	N3713.91 W11548.16	4475
HEC	Hector	74	N3447.83 W11627.78	1854
ILC	Wilson Creek	110	N3815.02 W11423.65	9318
INS	Creech AFB	87	N3635.20 W11540.12	3101
LAS	McCarran Intl	116	N3604.78 W11509.59	2142
LSV	Nellis	12	N3614.68 W11501.50	1864
MLF	Milford	58	N3821.62 W11300.79	4977
MMM	Mormon Mesa	90	N3646.16 W11416.65	2120
MVA	Mina	98	N3833.92 W11801.97	7860
OAL	Coale Dale	124	N3800.20 W11746.23	4800
PGS	Peach Springs	57	N3537.48 W11332.67	4754
TPH	Tonopah Muni	119	N3801.84 W11702.01	5330
TQQ	Silverbow	77	N3748.00 W11647.00	5500
UTI	St George	23	N3705.29 W11335.53	2871



RWY 3L-21R  
 PCN 46 R/C/W/T  
 RWY 3R-21L  
 PCN 51 R/C/W/T  
 2017

PAR	RWY	CAT	MINIMA		ARP	ELEV	Scale 1:35'500	
	21L	A B D E	2057 - 0.8 200	(200-0.8/1.6) GS 3°	36° 14.060° N 115° 01.058° W	1857 [ft] 566 [m]	0 300 600 900 1200 1500 [m]	
	3R	A B D E	2057 - 0.8 200	(200-0.8/1.6) GS 3°			0 1000 2000 3000 4000 5000 [ft]	
SRA	21R	A C D E	2257 - 1.2 350	(350-1.2/1.6)				
	3L	A C D E	2257 - 1.2 350	(350-1.2/1.6)				

RWY	TORA	TODA	ASDA	LDA	PSN	THR	ALS
21L	10051 [ft] 3063 [m]	11051 [ft] 3368 [m]	11051 [ft] 3368 [m]	10051 [ft] 3063 [m]	36°14.043' N	115°01.018' W	⊕
3R	10120 [ft] 3084 [m]	11120 [ft] 3398 [m]	11120 [ft] 3398 [m]	10120 [ft] 3084 [m]	36°13.029' N	115°02.038' W	

ATIS	NELLIS GROUND	NELLIS TOWER	NELLIS CONTROL	TACAN	ILS RWY 21L	NELLIS EAST	NELLIS WEST
270.100 MHz	275.800   121.800	327.000   132.55	317.525	LSV 12X	109.10 Mhz	384.400	385.000



**FYTTR THREE DEPARTURE** IFR CHART | VALID 2014 LAS VEGAS, NEVADA

ATIS  
270.100  
NELLIS GROUND  
275.800  
NELLIS TOWER  
327.000  
NELLIS CONTROL  
317.525  
NELLIS DEP/APP EAST  
384.400  
BLACKJACK  
377.800



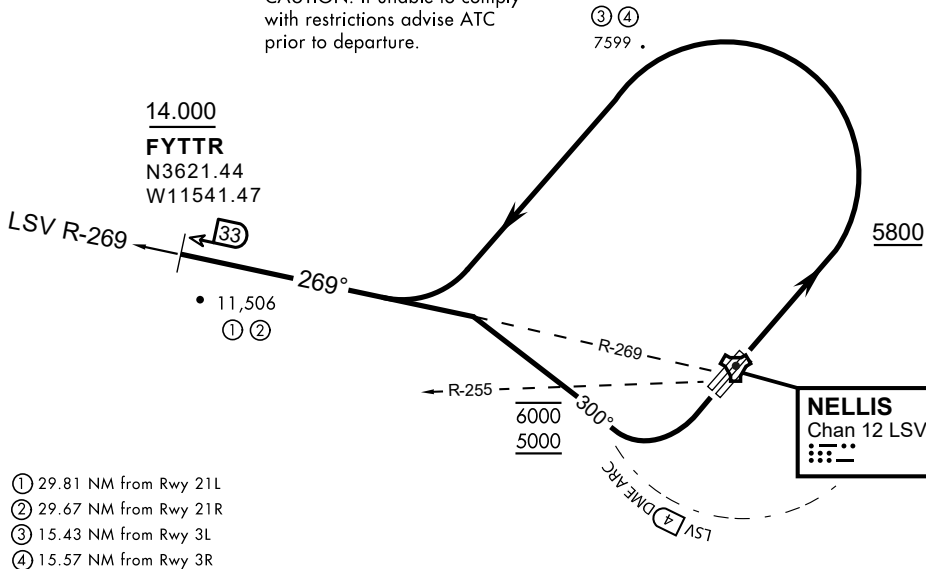
Rwy	Knots	60	120	180	240	300	360
3L (a)	V/V(fpm)	394	788	1182	1576	1970	2364
3R (a)	V/V(fpm)	392	784	1176	1568	1960	2352
21L (b)	V/V(fpm)	388	776	1164	1552	1940	2328
21R (b)	V/V(fpm)	390	780	1170	1560	1950	2340

Minimum Climb Rate

(a) to 9300

(b) to 13 500

CAUTION: If unable to comply with restrictions advise ATC prior to departure.



- ① 29.81 NM from Rwy 21L
- ② 29.67 NM from Rwy 21R
- ③ 15.43 NM from Rwy 3L
- ④ 15.57 NM from Rwy 3R

**DEPARTURE ROUTE DESCRIPTION**

TAKEOFF RWY 3L/R

- Fly runway heading until reaching 5,800'.
- Then climbing left turn to intercept LSV TACAN R-269 outbound.
- Cross FYTTR at or above 14,000' or as assigned, then via assigned route.

TAKEOFF RWY 21L/21R

- Turn right to intercept LSV TACAN R-269 outbound.
- Remain within LSV 4 DME until joining LSV R-269
- Cross R-255 between 5,000' and 6,000'.
- Cross FYTTR at or above 14,000' or as assigned, then via assigned route.

**NOISE ABATEMENT PROCEDURES:**

Fly according Nellis Noise Abatement instructions as published

LAS VEGAS, NEVADA

# HI-TACAN Z RWY 21L

TACAN LSV Chan <b>12</b>	APCH CRS <b>210°</b>	Rwy ldg 21L <b>10,051</b> TDZE <b>1865</b> Arprt Elev <b>1869</b>	Rwy ldg 21R <b>10,120</b> TDZE <b>1869</b>
--------------------------	----------------------	---	---

JAL-227 [USAF] NELLIS AFB (KLSV)

▼ \* When ALS inop, increase CAT CDE vis to 1 3/4 miles.  
 \*\* Circling not authorized E of Rwy 3R-21L.

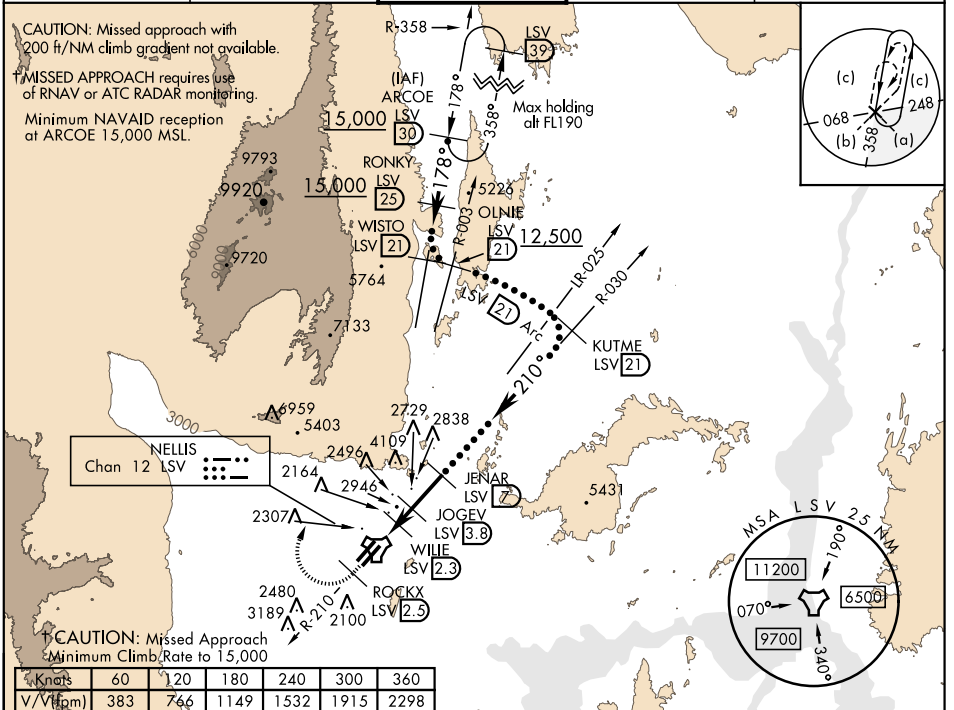
ALSIF-1  MISSED APPROACH: Climb to 15,000, intercept LSV TACAN R-210 to 2.5 DME (ROCKX), then climbing right turn heading 020° to join LSV R-358 to ARCOE and hold, continue climb in hold to 15,000. Missed approach not for civil use.

ATIS <b>270.1</b>	NELLIS APP CON <b>124.95 273.55</b>	NELLIS TOWER <b>132.55 327.0</b>	GND CON <b>121.8 275.8</b>	CLNC DEL <b>120.9 289.4</b>
-------------------	-------------------------------------	----------------------------------	----------------------------	-----------------------------

CAUTION: Missed approach with 200 ft/NM climb gradient not available.

MISSED APPROACH requires use of RNAV or ATC RADAR monitoring.

Minimum NAVAID reception at ARCOE 15,000 MSL.



SW-4, 05 DEC 2019 to 02 JAN 2020

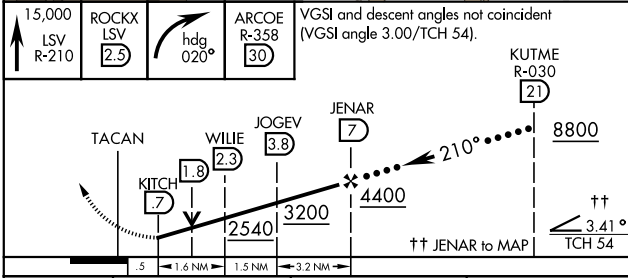
SW-4, 05 DEC 2019 to 02 JAN 2020

CAUTION: Missed Approach Minimum Climb Rate to 15,000						
Knots	60	120	180	240	300	360
V/V (ft/min)	383	766	1149	1532	1915	2298

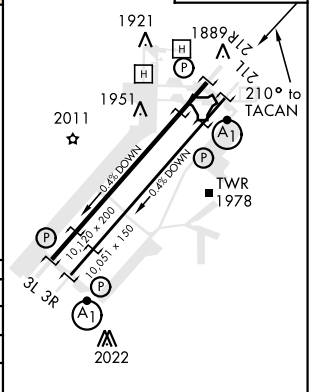
Controlling Obstacle 6959'

EMERG SAFE ALT 100, NM 14,000

VGSI and descent angles not coincident (VGSI angle 3.00/TCH 54).



ELEV 1869	TDZE 21L 1865
	TDZE 21R 1869



CATEGORY	C	D	E
S-21L *	2460-1 1/4	595 (600-1 1/4)	
SIDESTEP 21R	2460-1	591 (600-1)	
CIRCLING **	2620-2 1/4 751 (800-2 1/4)	2840-3 971 (1000-3)	3040-3 1171 (1200-3)

HIRL all Rwy

# HI-TACAN Z RWY 21L

# HI-TACAN Y RWY 21L

TACAN LSV Chan 12	APCH CRS 210°	Rwy ldg 21L 10,051 TDZE 1865 Arprt Elev 1869	Rwy ldg 21R 10,120 TDZE 1869
-------------------	---------------	--	------------------------------

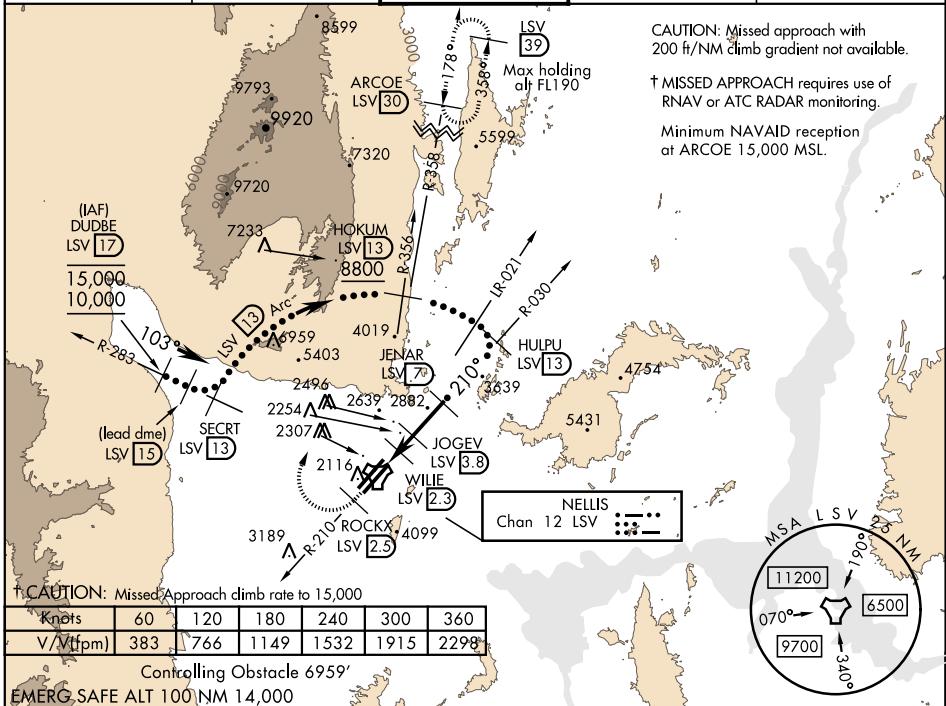
JAL-227 [USAF] NELLIS AFB (KLSV)

\* When ALS inop, increase CAT CDE vis to 1 3/4 miles.  
 \*\* Circling not authorized E of Rwy 3R-21L.



† MISSED APPROACH: Climb to 15,000, intercept LSV TACAN R-210 to 2.5 DME (ROCKX), then climbing right turn heading 020° to join LSV R-358 to ARCOE and hold, continue climb in hold to 15,000. Missed approach not for civil use.

ATIS 270.1	NELLIS APP CON 124.95 273.55	NELLIS TOWER 132.55 327.0	GND CON 121.8 275.8	CLNC DEL 120.9 289.4
------------	------------------------------	---------------------------	---------------------	----------------------



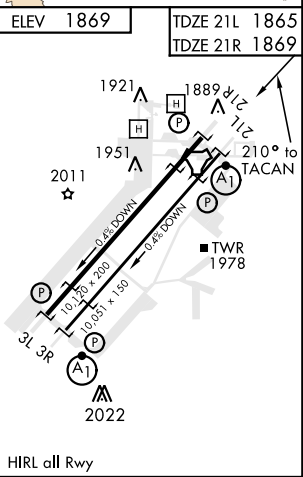
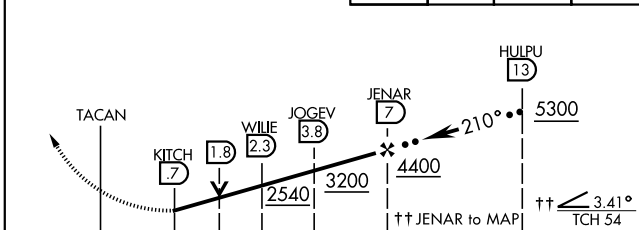
† CAUTION: Missed Approach climb rate to 15,000

Knots	60	120	180	240	300	360
V/Vt (fpm)	383	766	1149	1532	1915	2298

Controlling Obstacle 6959'

EMERG. SAFE ALT 100 NM 14,000

VGSJ and descent angles not coincident (VGSJ angle 3.00/TCH 54).	15,000 LSV R-210	ROCKX LSV 2.5	hdg 020°	ARCOE R-358 30	ELEV 1869	TDZE 21L 1865	TDZE 21R 1869
--	------------------	---------------	----------	----------------	-----------	---------------	---------------



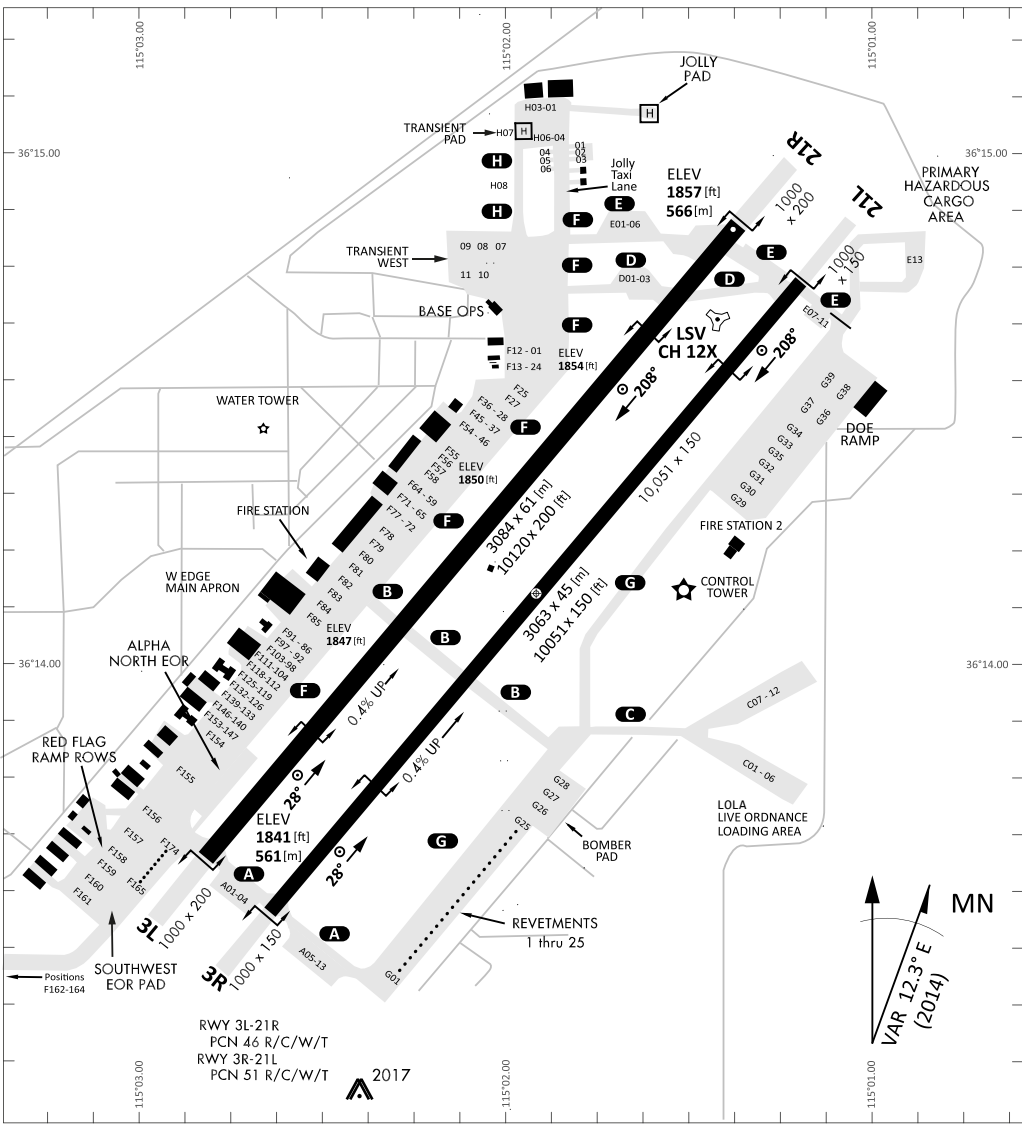
CATEGORY	C	D	E
S-21L *	2460-1 1/4	595 (600-1 1/4)	
SIDESTEP 21R	2460-1	591 (600-1)	
CIRCLING **	2620-2 1/4 751 (800-2 1/4)	2840-3 971 (1000-3)	3040-3 1171 (1200-3)

HIRL all Rwy

# HI-TACAN Y RWY 21L

SW-4, 05 DEC 2019 to 02 JAN 2020

SW-4, 05 DEC 2019 to 02 JAN 2020



RWY 3L-21R  
 PCN 46 R/C/W/T  
 RWY 3R-21L  
 PCN 51 R/C/W/T  
 2017

PAR	RWY	CAT	MINIMA	ARP	ELEV	Scale 1:35'500
	21L	A B D E	2057 - 0.8 200 (200-0.8/1.6) GS 3°	36° 14.060° N 115° 01.058° W	1857 [ft] 566 [m]	0 300 600 900 1200 1500 [m]
	3R	A B D E	2057 - 0.8 200 (200-0.8/1.6) GS 3°			0 1000 2000 3000 4000 5000 [ft]
SRA	21R	A C D E	2257 - 1.2 350 (350-1.2/1.6)			
	3L	A C D E	2257 - 1.2 350 (350-1.2/1.6)			

RWY	TORA	TODA	ASDA	LDA	PSN	THR	ALS
21L	10051 [ft] 3063 [m]	11051 [ft] 3368 [m]	11051 [ft] 3368 [m]	10051 [ft] 3063 [m]	36°14.043' N	115°01.018' W	⊕
3R	10120 [ft] 3084 [m]	11120 [ft] 3398 [m]	11120 [ft] 3398 [m]	10120 [ft] 3084 [m]	36°13.029' N	115°02.038' W	

ATIS	NELLIS GROUND	NELLIS TOWER	NELLIS CONTROL	TACAN	ILS RWY 21L	NELLIS EAST	NELLIS WEST
270.100 MHz	275.800   121.800	327.000   132.55	317.525	LSV 12X	109.10 Mhz	384.400	385.000