

**MISSION DATA CARD**

OPORD		Callsign		Mission		Date/Time		
2979/2024		Edelweiss 2		Training		091200JUN24		
Task						Freq		
AO						134.25		
Departure				Recovery				
RWY10 VFR				RWY10 VFR				
#	Callsign		Pilot		IFF	TCN	LSR	NET
-1	Edelweiss 2-1		Jinx		1721	1Y	1721	

**LOADOUT**

A/A	2xA120C, 2xA9X				GUN	100% HEI-T	
A/G					CHF	120	
POD	HTS, TGP				FLR	0	
TKS	FT300				FUEL	50%	

**TOLD**

	Takeoff	Target	Joker	Bingo	Land
FUEL	5584				

**AIRBASES**

	Name	TCN	ATIS	GND	TWR	RWY	Elev	ILS
Dep	Akrotiri AFB	107X	288.2	240.1	339.85	28	62	109.7
Arr	Akrotiri AFB	107X	288.2	240.1	339.85	28	62	109.7
Div	Paphos Internationl	79X	127.3		353.8	29	40	108.9

**FLIGHTPLAN**

#	Name	Navaid/Coords/DME	ALT	TOT
1	ECHO	N34 42.600 E033 10	5000	
2	PAPA	N34 39.390 E032 46.480	5000	

**SUPPORT****Tanker**

Callsign	TCN	Freq	ALT	TAS
TEXACO 2	44Y	244.78	FL150	250
	Pos	TEXACO2: (N3424 E03403)		
SHELL 3	93Y	278.75	FL170	215
	Pos	SHELL3: (N3436 E03419)		

**OTHER FLIGHTS**

Callsign	Mission	Airframe	Freq	TCN	Grpld	Laser
Edelweiss 1	Training	2x F/A-18C	264.15	1/64		171X
AO		Task				

**RADIO CHANNELS**

#	Freq	Name
1		Flight/Squadron specific
2	288.2	Akrotiri ATIS
3	240.1	Akrotiri Ground
4	339.85	Aktrotiri Tower
5	335.05	Akrotiri Approach
6	360.1	Incirlik Tower
7	371.35	Incirlik Ground
8	377.475	Incirlik ATIS
9		No Preset
10	127.3	Paphos ATIS
11	353.8	Paphos Tower
12	304.0	CVN-73 George Washington
13	302.0	LHA-1 Tarawa
14	259.0	CV-59 Forrestal
15		No Preset
16	377.8	Overlord
17	265.0	KC-135 Texaco-1 medium/slow
18	319.8	KC-135 Arco-1
19	360.8	KC-135MPRS Arco-2
20	256.0	S-3B Recovery Tanker

**RAMROD**

0	1	2	3	4	5	6	7	8	9
M	A	G	N	I	T	U	D	E	S

**KTC 1400 C**

	0	1	2	3	4	5	6	7	8	9
A	NEVL	AJG	XBK	IC	OS	DHP	QT	RM	WF	UY
B	NFDO	JMR	QGX	SA	PI	HEY	TK	CW	LU	VB
C	NPTF	HOB	IWQ	AC	VE	SRK	YJ	MX	LD	UG
D	DYOG	VWC	PAI	HL	MS	JET	NK	RU	XF	QB
E	HCJS	NDP	QXY	VR	TA	UWO	IK	BL	GF	ME
F	YNIT	HWD	KCV	EF	LR	OJS	UQ	XA	GM	BP
G	VYNJ	FEG	DKL	RQ	UH	BOI	CP	TM	AW	SX
H	BRNS	JUH	YGM	OD	PC	EQV	LW	TK	XF	IA
I	STRU	BML	POG	FA	QK	YVC	XE	NH	DW	IJ
J	RQKY	FAW	EXN	UM	TP	LVD	IJ	OC	HG	SB
K	FVOJ	XGN	ISP	AM	YK	WLT	RU	QC	EH	BD
L	XCRU	NEV	AFI	GL	BO	PJM	WY	SH	QT	DK
M	JKFB	HDR	SPO	WT	LU	XAV	EI	QM	GN	YC
N	TGBN	XCR	FMU	DQ	VW	OSH	KE	AL	PI	JY
O	VAHJ	YTU	IGP	CR	XL	BKF	NE	MS	OW	DQ
P	WQFP	TXE	KDC	JY	HB	RUG	VO	SM	LN	AI
Q	LIBA	TSR	QWF	PM	NX	UHG	KO	YC	EJ	DV
R	BJCV	FSK	APM	HQ	GE	ODT	RN	XU	WI	LY
S	WCIO	SDK	YRE	PJ	GT	BAN	VH	LM	FU	QX
T	EUXP	KHC	IYM	TJ	OV	GAD	FB	RW	LS	NQ
U	QXJT	GSI	LPC	EU	KD	ANR	WH	BM	YF	OV
V	ITAU	ESQ	PNF	XR	VJ	KMY	HD	GB	LC	OW
W	SHXK	EML	NUW	PF	GV	DBC	RI	YO	QT	JA
X	KFGU	IWO	PRX	LV	QS	AHE	ND	YC	MJ	BT
Y	IKXE	SGC	YNT	OU	HL	VBR	WF	AD	QP	JM

**NAVAIDS**

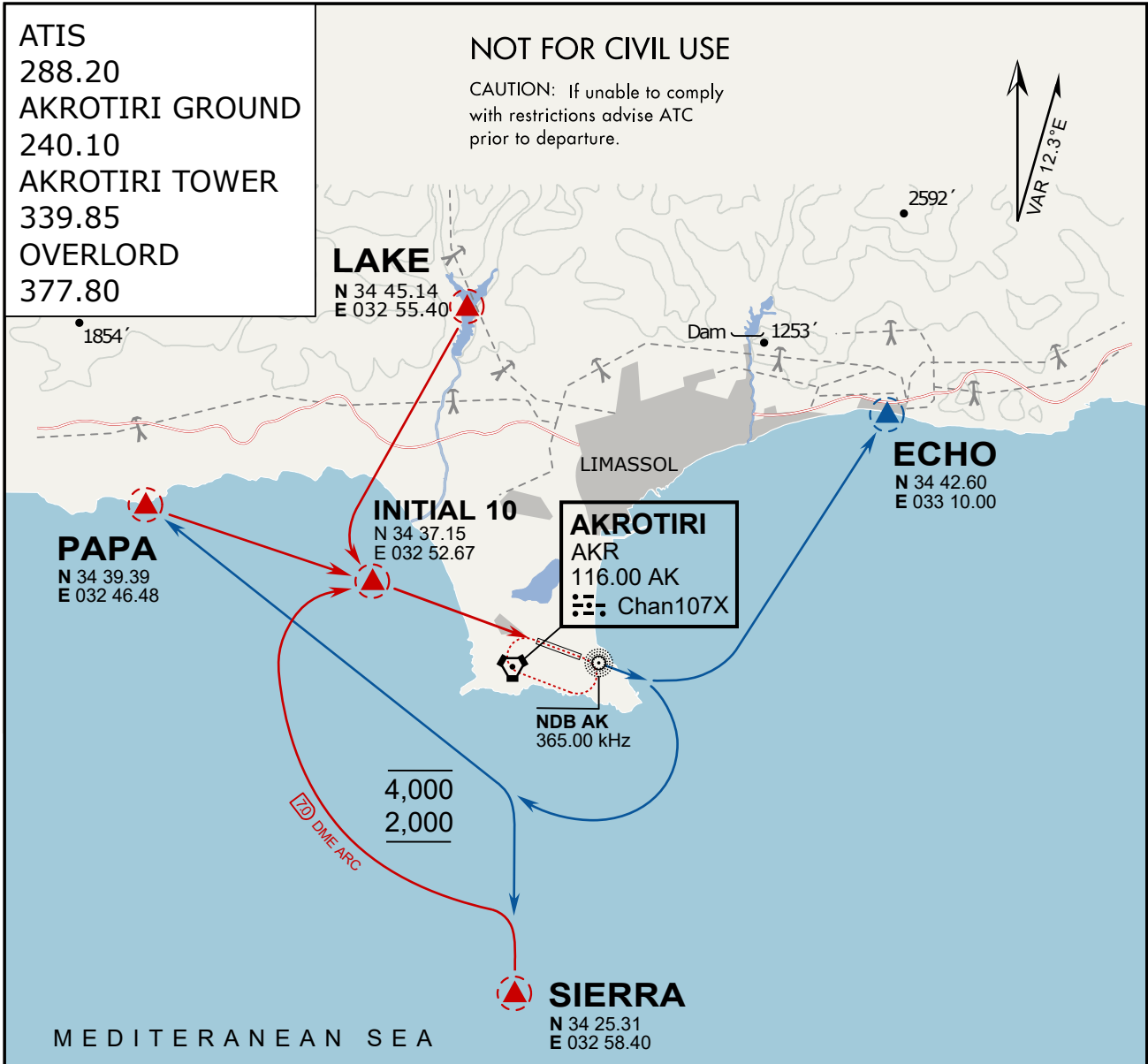
<b>Id</b>	<b>Name</b>	<b>Channel</b>	<b>Position</b>	<b>Elevation</b>
DAN	Incirlik	21	N37 00.950 E035 26.883	243
AKR	Akrotiri	107	N34 34.765 E032 57.769	147
PHA	Paphos	79	N34 42.997 E032 28.963	35
RMD	Ramat David	84	N32 39.892 E035 11.265	136
OS66	Kuweires Military Aviation Institute	36	N36 11.362 E037 34.226	1200

**FOR DCS  
 USE ONLY**



ATIS	AKROTIRI GND	AKROTIRI TWR	OVERLORD CONTROL	TACAN	FIELD ELEVATION
288.20 MHz	240.10   122.10	339.85   130.075	377.8	AKR 107X	<b>75 [ft] 23 [m]</b>





vJaBoG32 ETTR NAV CHART

**ARR / DEP ROUTE DESCRIPTION**

ARRIVAL GENERAL

Pass Entry at 5.000' or below. Overhead Brake RWY 10: pass INITIAL 10 at 2.000' MSL. Straight-in RWY 10 : pass INITIAL 1.500' or below.

ARR RWY10 PAPA / LAKE: Direct initial.

ARR RWY10 SIERRA: Intercept ARC 7 of AKR to INITIAL 10.

ARR ECHO: no ENTRY.

DEPARTURE GENERAL

Pass Departure end of runway at 1.000' AGL or below. Keep RWY heading until coastline.

DEP RWY10 ECHO: Direct EXIT.

DEP RWY10 SIERRA: Climbing right turn, intercept R180 AKR to Sierra.

DEP RWY10 PAPA: Climbing right turn until R180 AKR, then direct Papa

DEP LAKE: no EXIT.

ATIS

288.20

AKROTIRI GROUND

240.10

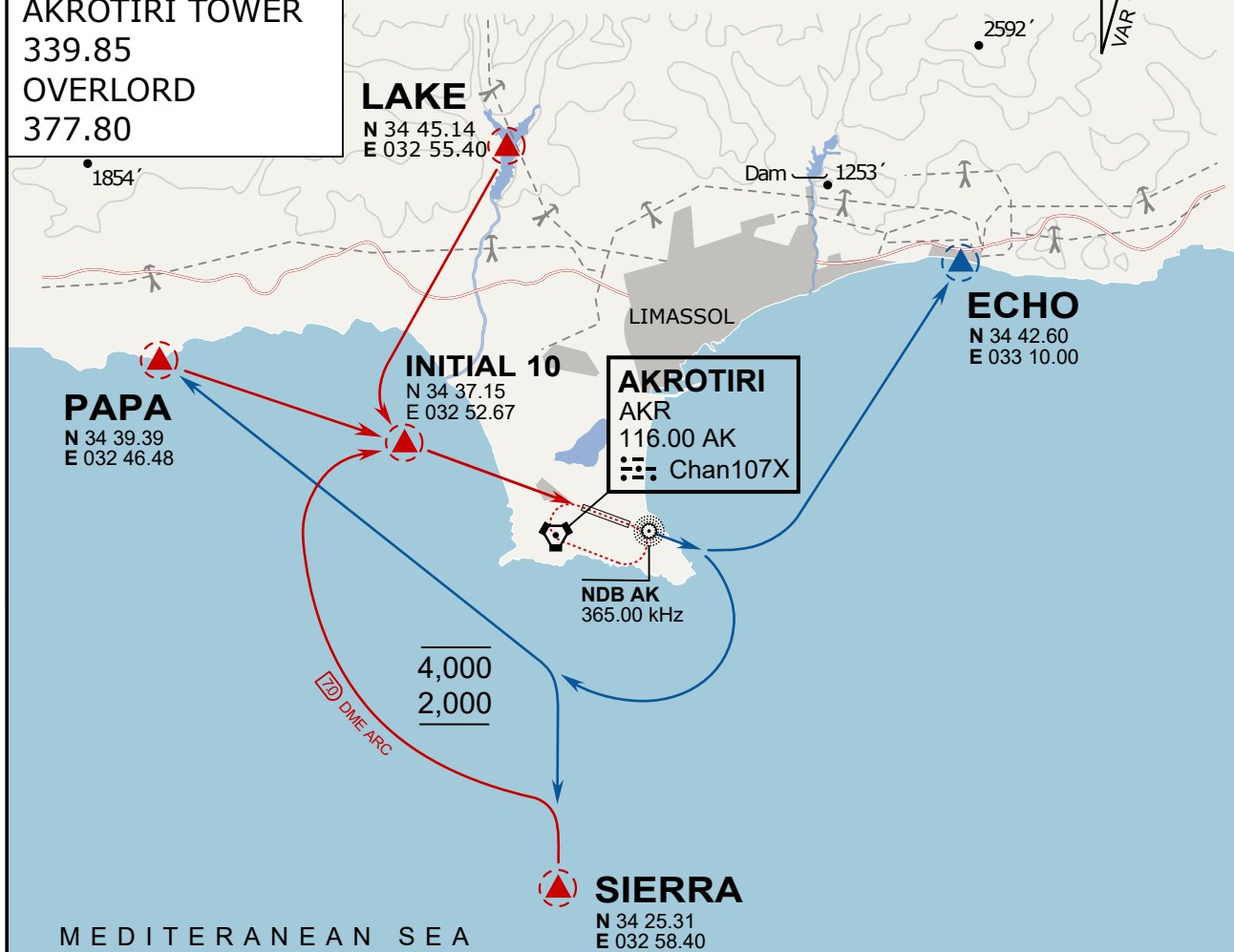
AKROTIRI TOWER

339.85

OVERLORD

377.80

NOT FOR CIVIL USE

CAUTION: If unable to comply  
with restrictions advise ATC  
prior to departure.

MEDITERRANEAN SEA

## ARR / DEP ROUTE DESCRIPTION

### ARRIVAL GENERAL

Pass Entry at 5.000' or below. Overhead Brake RWY 10: pass INITIAL 10 at 2.000' MSL.  
Straight-in RWY 10 : pass INITIAL 1.500' or below.

ARR RWY10 PAPA / LAKE: Direct initial.

ARR RWY10 SIERRA: Intercept ARC 7 of AKR to INITIAL 10.

ARR ECHO: no ENTRY.

### DEPARTURE GENERAL

Pass Departure end of runway at 1.000' AGL or below. Keep RWY heading until coastline.

DEP RWY10 ECHO: Direct EXIT.

DEP RWY10 SIERRA: Climbing right turn, intercept R180 AKR to Sierra.

DEP RWY10 PAPA: Climbing right turn until R180 AKR, then direct Papa

DEP LAKE: no EXIT.

**NOT AVAILABLE**

**NOT AVAILABLE**