

MISSION DATA CARD

OPORD		Callsign		Mission		Date/Time		
2978/2024		BamBam 5		Training		082000JUN24		
Task	OH58D					Freq		
AO						133.5		
Departure				Recovery				
Helicopter VFR				Helicopter VFR				
#	Callsign		Pilot		IFF	TCN	LSR	NET
-1	BamBam 5-1		Warblade		4751	1Y	1591	
-2	BamBam 5-2		Laud		4752	64Y	1592	

LOADOUT

A/A						GUN	50% HEDP
A/G	8xAGM114K					CHF	30
POD						FLR	60
TKS						FUEL	100%

TOLD

	Takeoff	Target	Joker	Bingo	Land
FUEL	2513				

AIRBASES

	Name	TCN	ATIS	GND	TWR	RWY	Elev	ILS
Dep	Akrotiri AFB	107X	288.2	240.1	339.85	28	62	109.7
Arr	Akrotiri AFB	107X	288.2	240.1	339.85	28	62	109.7
Div	Lakatamia Helicopter Airbase				251.95	35	757	

FLIGHTPLAN

#	Name	Navaid/Coords/DME	ALT	TOT
1	ECHO	N34 42.60 E033 10		
2	Lakatamia	N35 06.28 E033 19.30		
3	SA10.T1	N35 20.96 E033 17.50		
4	LAKE	N34 45.15 E032 55.40		
5	PAPA	N34 39.39 E032 46.48		
6	ITR.T1	N34 47.32 E032 58.62		

COMMS

Radio	Usage
1	133.5
2	339.85
3	35.35

OTHER FLIGHTS

Callsign	Mission	Airframe	Freq	TCN	Grpld	Laser
Tiger 1	Training	4x F/A-18C	261.15	1/64		155X
AO	Cape Pyla Bombing Range	Task	Training HADB			

RADIO CHANNELS

#	Freq	Name
1		Flight/Squadron specific
2	288.2	Akrotiri ATIS
3	240.1	Akrotiri Ground
4	339.85	Aktrotiri Tower
5	335.05	Akrotiri Approach
6	360.1	Incirlik Tower
7	371.35	Incirlik Ground
8	377.475	Incirlik ATIS
9		No Preset
10	127.3	Paphos ATIS
11	353.8	Paphos Tower
12	304.0	CVN-73 George Washington
13	302.0	LHA-1 Tarawa
14	259.0	CV-59 Forrestal
15		No Preset
16	377.8	Overlord
17	265.0	KC-135 Texaco-1 medium/slow
18	319.8	KC-135 Arco-1
19	360.8	KC-135MPRS Arco-2
20	256.0	S-3B Recovery Tanker

RAMROD

0	1	2	3	4	5	6	7	8	9
I	N	E	X	O	R	A	B	L	Y

KTC 1400 C

	0	1	2	3	4	5	6	7	8	9
A	ORKL	BMQ	AJD	HP	GV	SCW	IU	EN	FY	TX
B	FJCQ	YVE	LGW	TP	AM	SHI	RD	XB	KU	NO
C	EWXY	FLO	BAP	CK	QS	IVN	UG	RJ	MT	DH
D	VKQY	ROG	DFM	JU	BL	CEP	HX	IT	NW	SA
E	HRXJ	BQM	EPT	GO	WI	AKY	DV	US	CN	LF
F	YSPJ	UWT	LVX	HC	NO	ADQ	FE	KI	RM	BG
G	WMYO	LGE	HNR	QX	UI	VPB	DF	SJ	TC	AK
H	YALB	DJG	IHU	KX	ST	VFO	EP	RM	NC	QW
I	RWPA	NVT	QLM	JF	XI	SYG	ED	KH	OB	UC
J	OSPF	XIH	BRW	MG	TN	UKE	AJ	DC	QV	YL
K	YAPC	WBH	TFV	LN	QR	ODE	XM	JK	SU	GI
L	MYDL	UWI	FNJ	GV	BQ	PSH	AK	XE	OR	TC
M	MGNF	BOR	QTK	AY	XU	ICL	DS	PV	EW	JH
N	JYEL	KFT	VXQ	UD	RO	PGC	HN	BM	IS	WA
O	ERQI	TNM	OLX	CH	UY	WKS	PG	JB	AV	DF
P	AFEP	DHI	KJM	SG	NU	CYO	RQ	WV	BT	XL
Q	BGOD	RXI	FYM	CV	JN	ASE	UP	HW	KQ	TL
R	FPGH	EUJ	NWA	BT	XQ	YOV	DM	SI	CL	RK
S	FREM	GWU	PSA	XD	TB	CLO	VK	JQ	NI	YH
T	LNAE	KIP	MBS	QF	HY	WRV	GO	CT	XJ	DU
U	EDMS	OJK	LNR	TP	WF	QUH	XI	GB	CY	VA
V	UGHC	BFV	EOW	IJ	XK	QNL	SA	PT	DR	YM
W	OLBM	WNI	FJP	RU	KT	AYH	DC	VX	SQ	GE
X	MFUH	BYW	AXQ	RC	NE	DTP	GI	KO	LV	SJ
Y	CMNR	SXK	OIJ	QE	GI	LDB	FT	YV	PA	HW

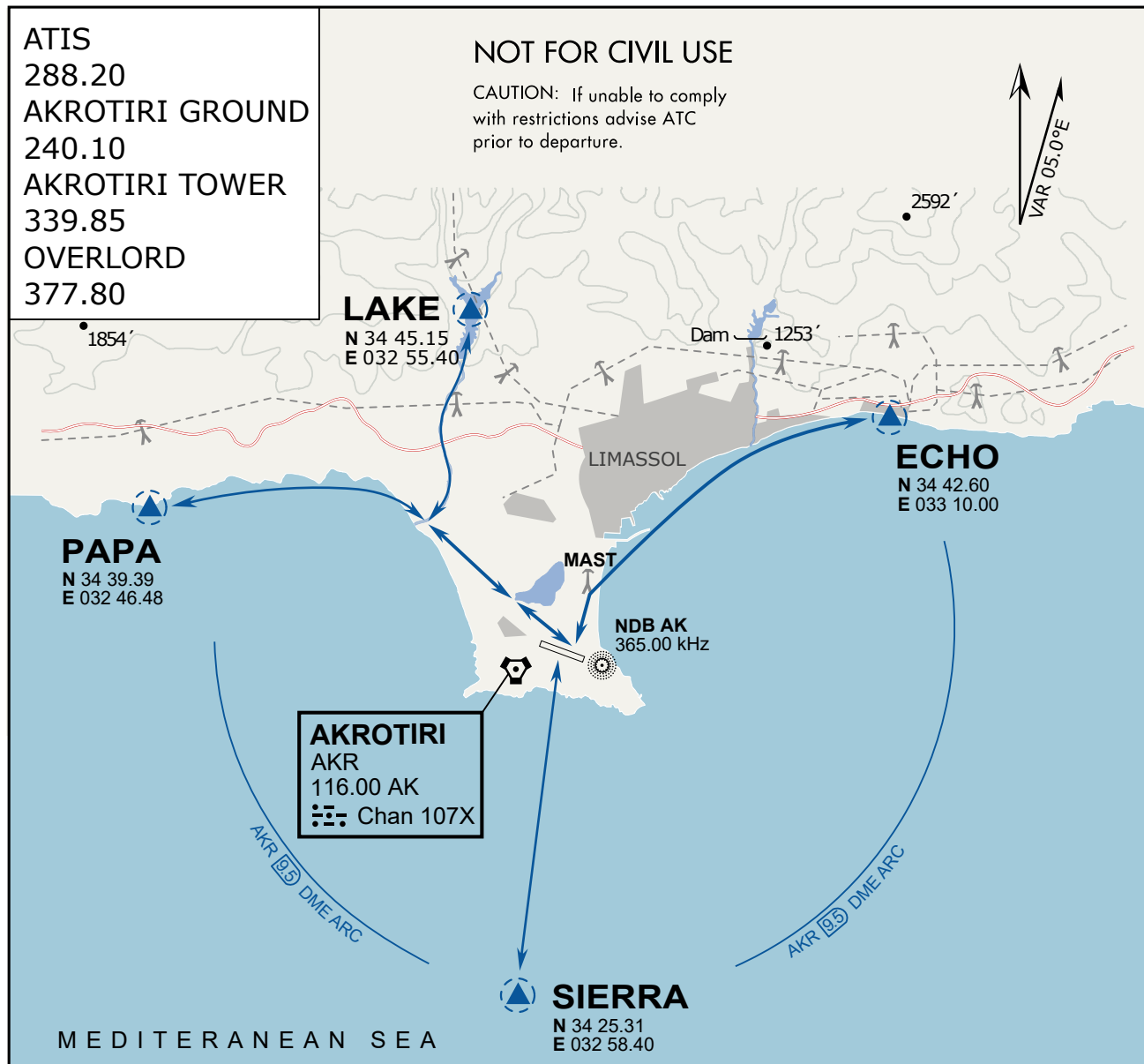
NAVAIDS

Id	Name	Channel	Position	Elevation
DAN	Incirlik	21	N37 00.950 E035 26.883	243
AKR	Akrotiri	107	N34 34.765 E032 57.769	147
PHA	Paphos	79	N34 42.997 E032 28.963	35
RMD	Ramat David	84	N32 39.892 E035 11.265	136
OS66	Kuweires Military Aviation Institute	36	N36 11.362 E037 34.226	1200

**FOR DCS
 USE ONLY**



ATIS	AKROTIRI GND	AKROTIRI TWR	OVERLORD CONTROL	TACAN	FIELD ELEVATION
288.20 MHz	240.10 122.10	339.85 130.075	377.8	AKR 107X	75 [ft] 23 [m]



ARR / DEP ROUTE DESCRIPTION

GENERAL

Stay at or below 500' AGL.

DEPARTURE

ECHO: Via the 4 masts, along the coastline to EXIT.

LAKE: Stay SOUTH WEST of the dry lake, to the river mouth, follow river to EXIT.

PAPA: Stay SOUTH WEST of the dry lake, follow coastline to EXIT.

SIERRA: Direct EXIT.

ARRIVAL

LAKE: Follow river to coastline, then direct LCRA.

PAPA: Follow coastline to rivermouth, then direct LCRA.

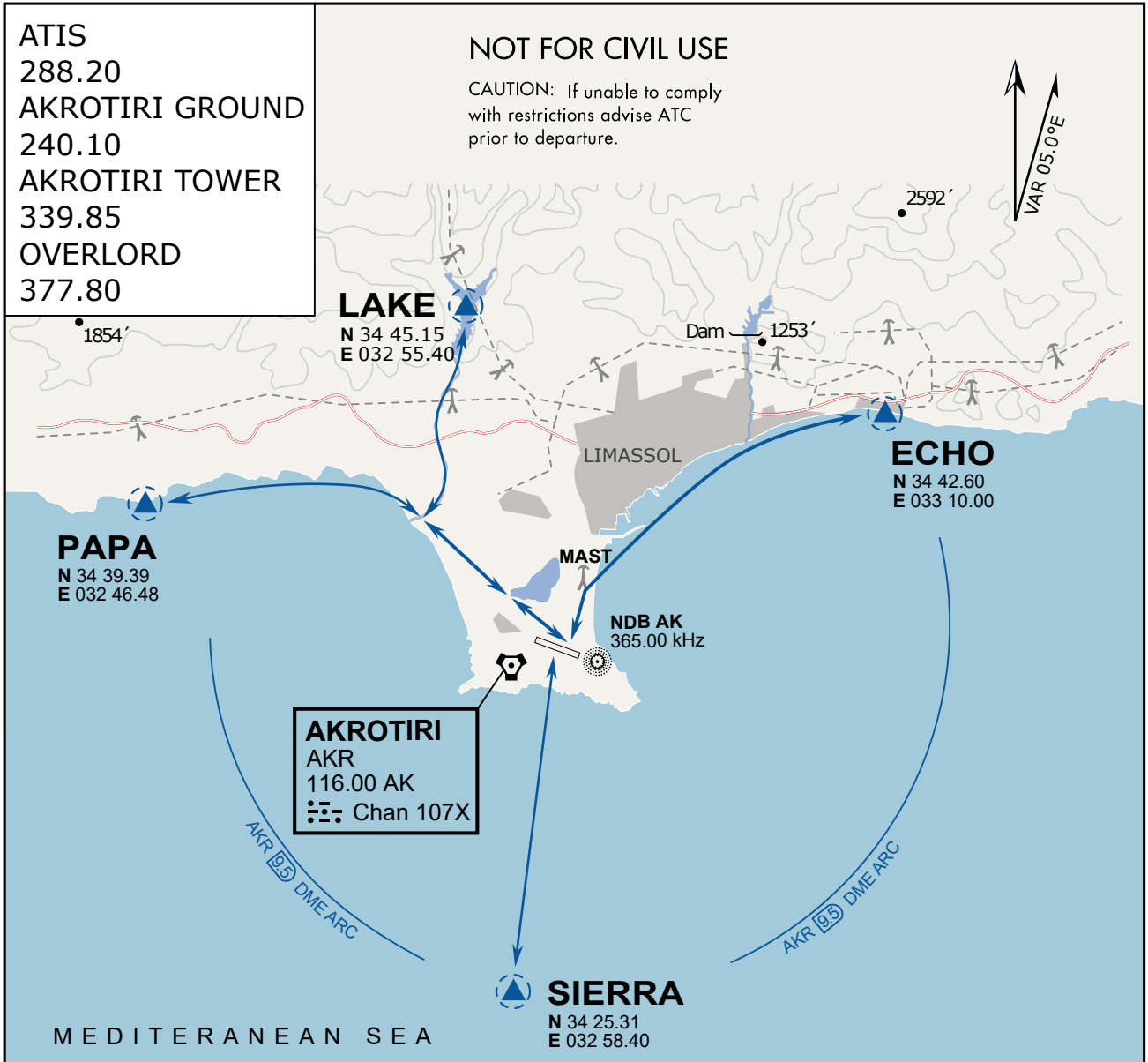
ECHO: Follow coastline to the 4 masts, then to LCRA.

SIERRA: Direct to LCRA.

ATIS
 288.20
 AKROTIRI GROUND
 240.10
 AKROTIRI TOWER
 339.85
 OVERLORD
 377.80

NOT FOR CIVIL USE

CAUTION: If unable to comply with restrictions advise ATC prior to departure.



ARR / DEP ROUTE DESCRIPTION

GENERAL

Stay at or below 500' AGL.

DEPARTURE

- ECHO: Via the 4 masts, along the coastline to EXIT.
- LAKE: Stay SOUTH WEST of the dry lake, to the river mouth, follow river to EXIT.
- PAPA: Stay SOUTH WEST of the dry lake, follow coastline to EXIT.
- SIERRA: Direct EXIT.

ARRIVAL

- LAKE: Follow river to coastline, then direct LCRA.
- PAPA: Follow coastline to rivermouth, then direct LCRA.
- ECHO: Follow coastline to the 4 masts, then to LCRA.
- SIERRA: Direct to LCRA.

NOT AVAILABLE

NOT AVAILABLE