

MISSION DATA CARD

OPORD	Callsign	Mission	Date/Time			
2977/2024	Edelweiss 1	Training	070000JUN24			
Task	Bomb Training					Freq
AO	Bomb Range					134.0
Departure			Recovery			
RWY28 SID			ILS 28			
#	Callsign	Pilot	IFF	TCN	LSR	NET
-1	Edelweiss 1-1	Jinx	1611	1Y	1621	
-2	Edelweiss 1-2	Newbie	1612	64Y	1622	

LOADOUT

A/A	2xA120C, 2xA9X	GUN	100% HEI-T
A/G		CHF	120
POD	HTS, A184, TGP	FLR	0
TKS	2xFT300	FUEL	100%

TOLD

	Takeoff	Target	Joker	Bingo	Land
FUEL	11169				

AIRBASES

	Name	TCN	ATIS	GND	TWR	RWY	Elev	ILS
Dep	Akrotiri AFB	107X	288.2	240.1	339.85	28	62	109.7
Arr	Akrotiri AFB	107X	288.2	240.1	339.85	28	62	109.7
Div	Akrotiri AFB	107X	288.2	240.1	339.85	28	62	109.7

FLIGHTPLAN

#	Name	Navaid/Coords/DME	ALT	TOT
1	IREFA	N34 25.328 E033 26.664	9000	
2	ANANE	N34 18.048 E032 43.619	5000	
3	RAF Akrotiri	N34 35 26 E032 59 17	1500	
4	MEZUS	N34 25.109 E032 03.519	9000	

SUPPORT**Tanker**

Callsign	TCN	Freq	ALT	TAS
ARCO 1	22Y	319.8	FL222	400
Pos	ARCO1: (N3701 E03457)			

OTHER FLIGHTS

Callsign	Mission	Airframe	Freq	TCN	Grpld	Laser
Edelweiss 1	Training	2x F/A-18C	264.15	1/64		171X
AO		Task				
T-Rex 2	Training	2x A-10C	132.25	21/84	25	156X
AO	AAR Shell3	Task	AAR			

RADIO CHANNELS

#	Freq	Name
1		Flight/Squadron specific
2	288.2	Akrotiri ATIS
3	240.1	Akrotiri Ground
4	339.85	Aktrotiri Tower
5	335.05	Akrotiri Approach
6	360.1	Incirlik Tower
7	371.35	Incirlik Ground
8	377.475	Incirlik ATIS
9		No Preset
10	127.3	Paphos ATIS
11	353.8	Paphos Tower
12	304.0	CVN-73 George Washington
13	302.0	LHA-1 Tarawa
14	259.0	CV-59 Forrestal
15		No Preset
16	377.8	Overlord
17	265.0	KC-135 Texaco-1 medium/slow
18	319.8	KC-135 Arco-1
19	360.8	KC-135MPRS Arco-2
20	256.0	S-3B Recovery Tanker

RAMROD

0	1	2	3	4	5	6	7	8	9
O	S	T	R	A	C	I	Z	E	D

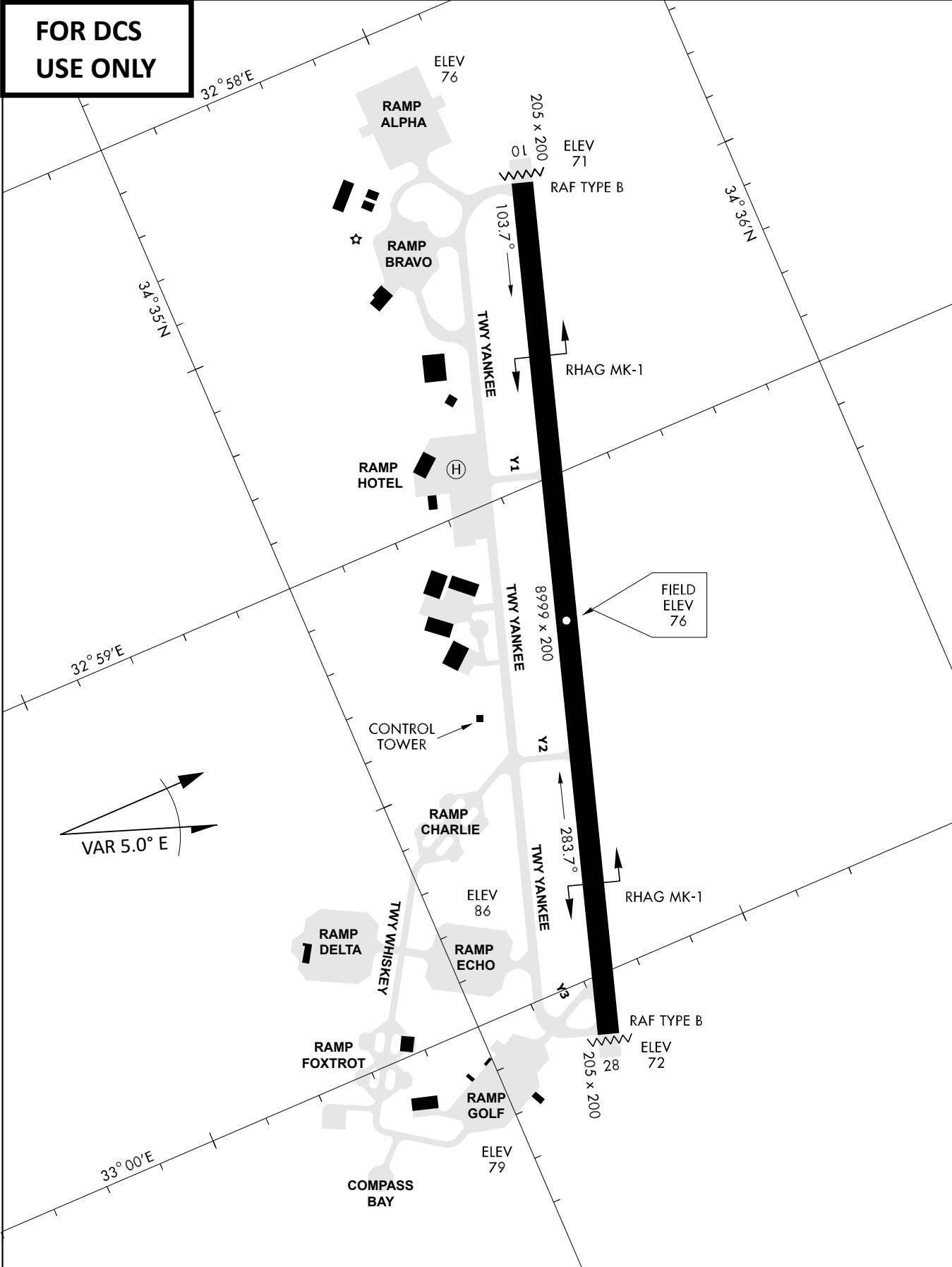
KTC 1400 C

	0	1	2	3	4	5	6	7	8	9
A	AGIN	BUW	DPT	JY	FX	OKH	EL	RS	QM	CV
B	JVTL	NAP	WRY	OE	IU	FHQ	GC	SB	XD	MK
C	TYEL	MXA	NVJ	HD	PW	FGI	CB	QS	OR	KU
D	FTIK	LVN	YWG	MH	SU	CEX	BO	RJ	AD	QP
E	CBUJ	SKY	EDV	FL	QP	AOM	HN	TX	RG	IW
F	CXMI	EQR	OBD	FV	SJ	NLW	TH	GK	AU	PY
G	XEWK	QAG	LIV	NM	PT	SOJ	DY	UC	FR	HB
H	RKPS	AEJ	OIN	HD	GC	WLU	BT	VY	MF	XQ
I	LMGQ	VNE	RTC	FD	UK	HOB	JP	YS	IA	XW
J	XAJR	UMO	WNY	BC	SL	PIV	HQ	FD	KE	TG
K	TILV	DWH	GXK	RP	JF	QAM	EY	OC	NS	BU
L	HTYW	BIA	MLS	CJ	FN	GDE	RX	VU	QP	KO
M	OWUQ	SKP	DTM	BA	NJ	IYL	HG	VF	CX	RE
N	PKUA	HTG	QDR	VL	YM	JIS	NE	CX	OF	BW
O	GHLJ	DXM	PQS	UA	RN	COB	FE	VK	WY	TI
P	VBJQ	HCK	IAO	DP	UF	XER	NL	YS	TM	GW
Q	WLPC	HTA	OMD	VU	RN	XJB	GF	IQ	YS	EK
R	ATRK	PYH	MQX	LS	UG	CVJ	ID	EF	ON	WB
S	HNSP	KTA	QUL	EC	MG	YVO	FB	XR	DI	WJ
T	JYAI	WPS	XGL	KF	OR	TCE	UN	MB	HQ	DV
U	OIVM	UYG	NCA	JD	KB	PWR	LE	QF	XS	HT
V	OTKI	YAW	GSE	QX	HU	LMN	DR	FJ	PC	VB
W	UDJG	KHI	XYS	QC	BF	ATN	PO	MV	RL	EW
X	VUOT	GWA	RMJ	HN	BX	ECI	YL	QF	DP	KS
Y	KPIE	VLQ	XGD	UA	MY	RNO	TB	CF	HJ	SW

NAVAIDS

Id	Name	Channel	Position	Elevation
DAN	Incirlik	21	N37 00.950 E035 26.883	243
AKR	Akrotiri	107	N34 34.765 E032 57.769	147
PHA	Paphos	79	N34 42.997 E032 28.963	35
RMD	Ramat David	84	N32 39.892 E035 11.265	136
OS66	Kuweires Military Aviation Institute	36	N36 11.362 E037 34.226	1200

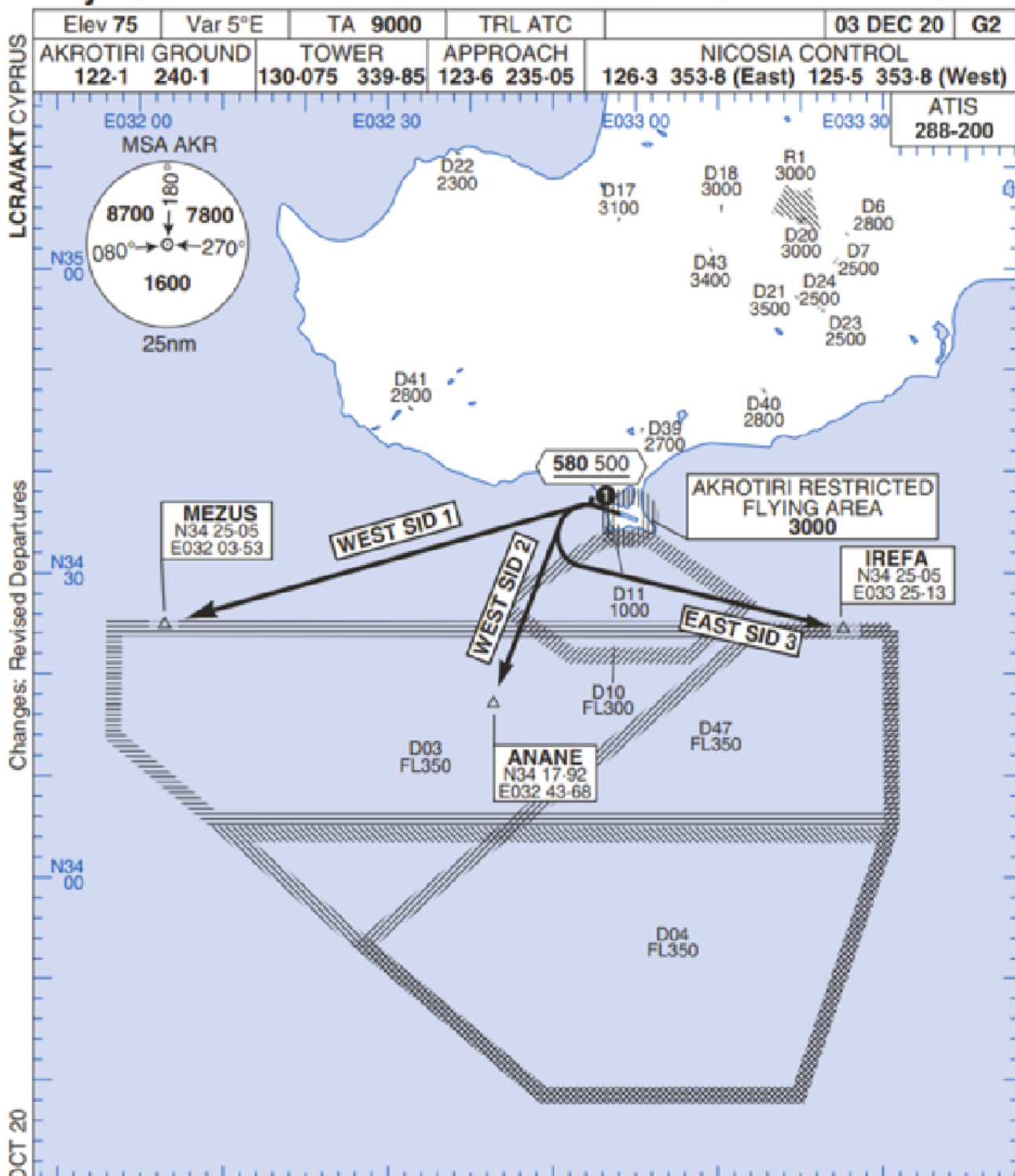
**FOR DCS
 USE ONLY**



ATIS	AKROTIRI GND	AKROTIRI TWR	OVERLORD CONTROL	TACAN	FIELD ELEVATION
288.20 MHz	240.10 122.10	339.85 130.075	377.8	AKR 107X	75 [ft] 23 [m]

Rwy 28 OMNIDIRECTIONAL DEPARTURES

AKROTIRI



LCRA/AKT CYPRUS

Changes: Revised Departures

No1 AIDU Last Amended 06 OCT 20

© UK MOD Crown Copyright 2020. No1 AIDU is not responsible for, and claims no right to, the content or accuracy of 3rd party documents/information.

Elev 75	Var 5°E	TA 9000	TRL ATC	03 DEC 20	G2
AKROTIRI GROUND 122-1 240-1	TOWER 130-075 339-85	APPROACH 123-6 235-05	NICOSIA CONTROL 126-3 353-8 (East) 125-5 353-8 (West)		

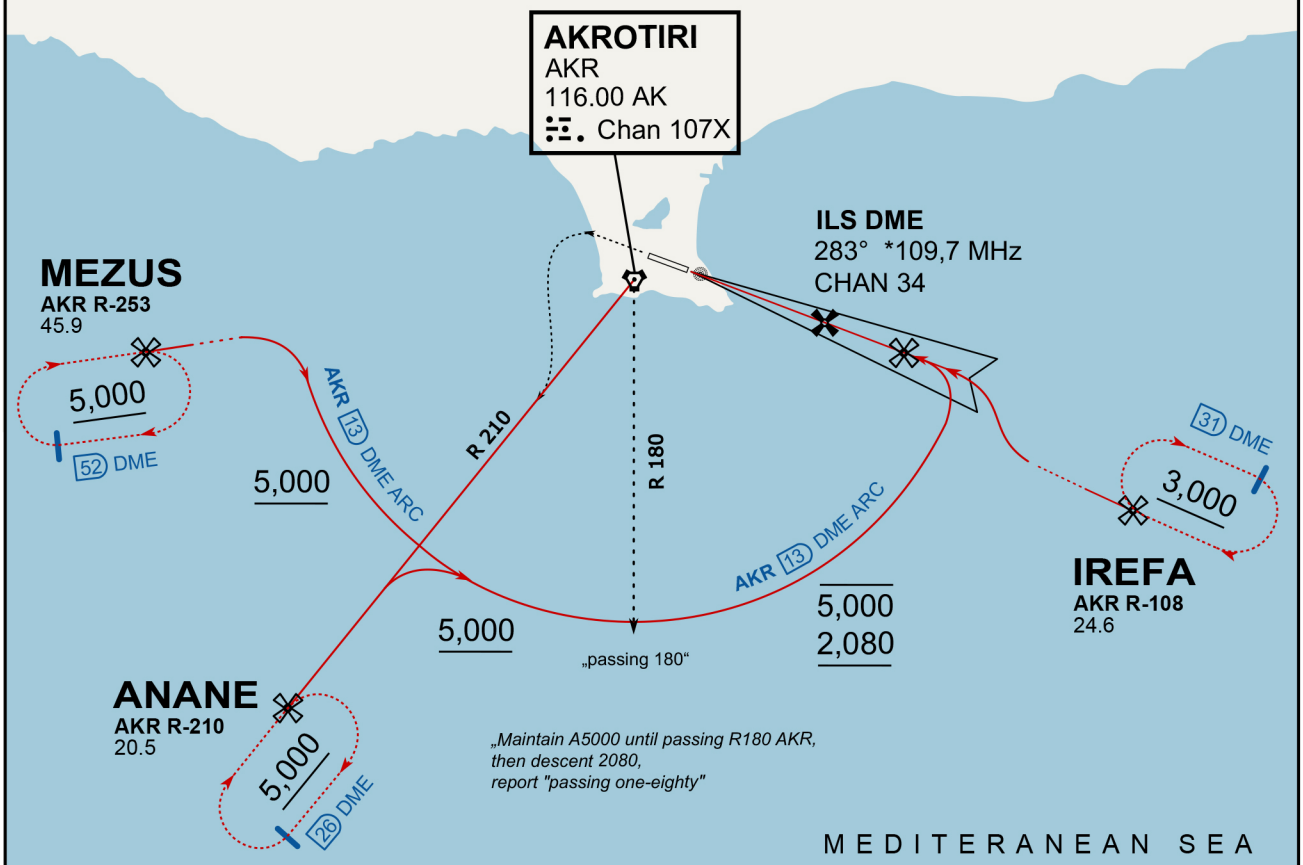
- 1. Minimum climb gradient 7% to 580 500 for obstacle and operational purposes.
- 2. No turns before DER.
- 3. Turns to north of Rwy prohibited.
- 4. Acft unable to locate MEZUS/ANANE/IREFA should request radar vectors from ATC.

SID	RWY	ROUTEING (Including Mnm Noise Routes)
WEST SID 1	28 283°M	Ahead on Rwy Tr to 580 500, turn left direct to MEZUS. SID terminates at 9000.
WEST SID 2		Ahead on Rwy Tr to 580 500, turn left direct to ANANE. SID terminates at 9000.
EAST SID 3		Ahead on Rwy Tr to 580 500, turn left direct to IREFA. SID terminates at 9000.

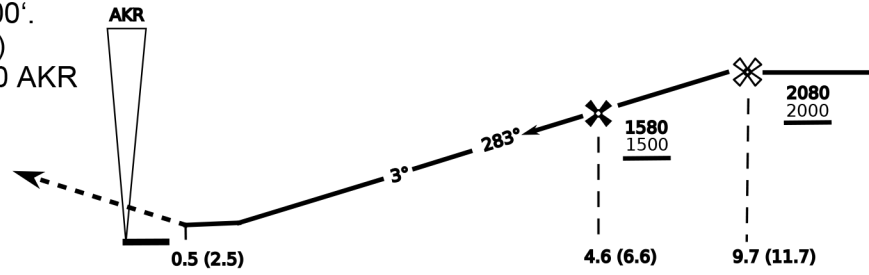
ATIS
288.200
AKROTIRI GROUND
122.100
AKROTIRI TOWER
339.850
APP (OVERLORD)
377.800

NOT FOR CIVIL USE

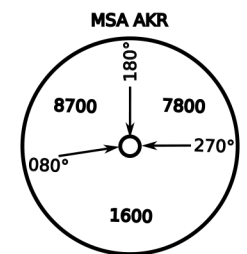
CAUTION: If unable to comply with restrictions advise ATC prior to departure.



On Track 283° climb A 4.000'.
passing 2.080' (2.000' AAL)
turn left and intercept R-210 AKR
to ANANE.
Enter ANANE Holding.



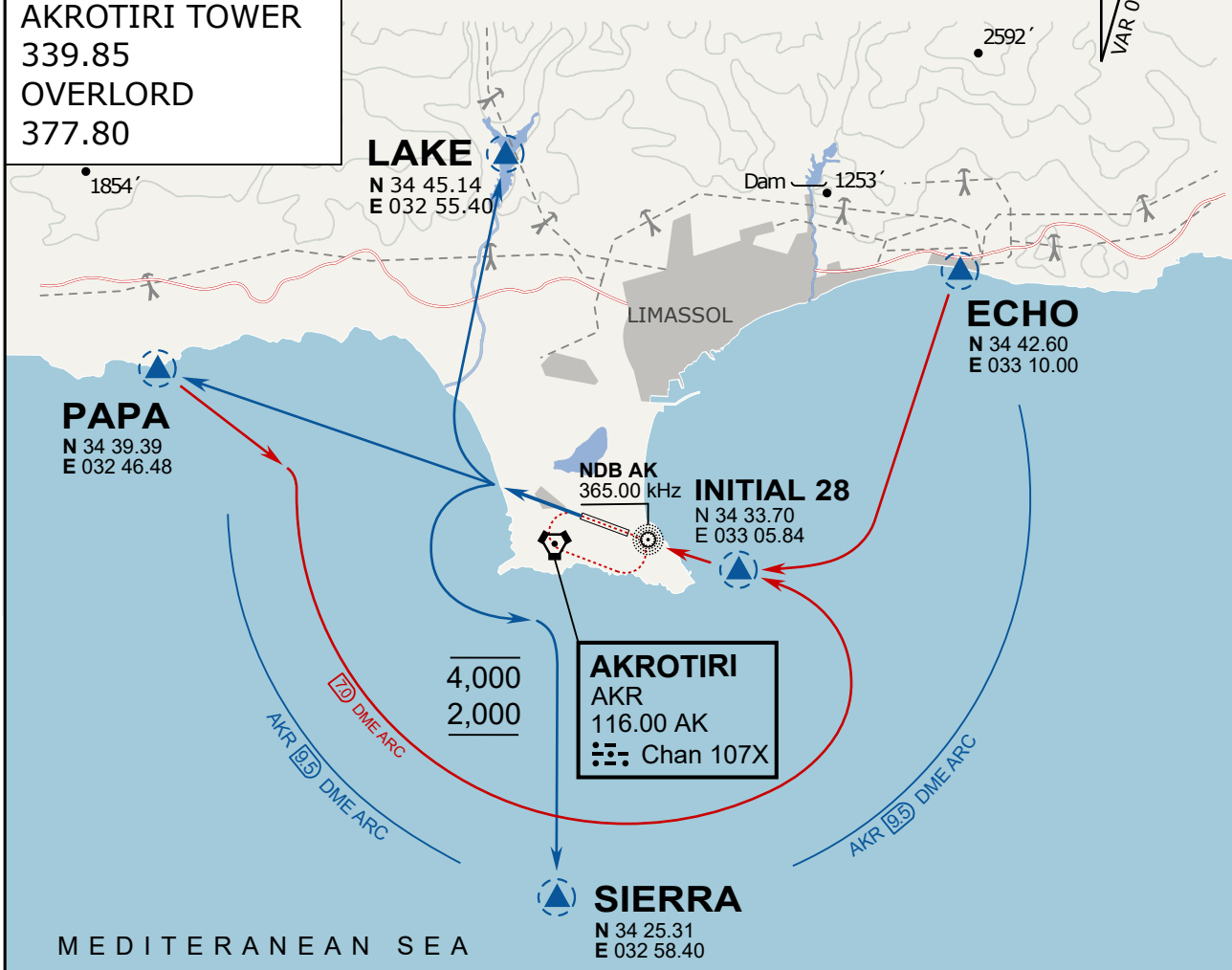
CAT	ILS/DME	LOC/DME	CIRCLE	GS (kts)				
				80	120	150	180	210
A	280 (200)	390 (320) 800m	680 (610) 1500m	FAF - MAPt (4.1NM) 3:06 2:03 1:38 1:22 1:10				
B	800m		680 (610) 1600m	RoD (fpm) 420 640 800 950 1110				
C	290 (210) 800m		780 (710) 2400m	- CIRCLING PROHIBITED N of Rwy - no AUTO coupled ILS approaches - when established on ILS contact Tower - Timing not Auth to define MAPt				
D	310 (230) 800m		780 (710) 3600m					
E	340 (260) 800m		1380 (1310) 3600m					



ATIS
 288.20
AKROTIRI GROUND
 240.10
AKROTIRI TOWER
 339.85
OVERLORD
 377.80

NOT FOR CIVIL USE

CAUTION: If unable to comply with restrictions advise ATC prior to departure.



ARR / DEP ROUTE DESCRIPTION

STRAIGHT-IN RWY28

Pass ENTRY at 5.000' MSL or below, pass INITIAL at 1.500' MSL or below.

OVERHEAD BREAK RWY28

Pass ENTRY at 5.000' MSL or below, pass INITIAL at 2.000' MSL, break to the south.

DEPARTURE GENERAL

Pass Departure end of runway at 1.000' or below.

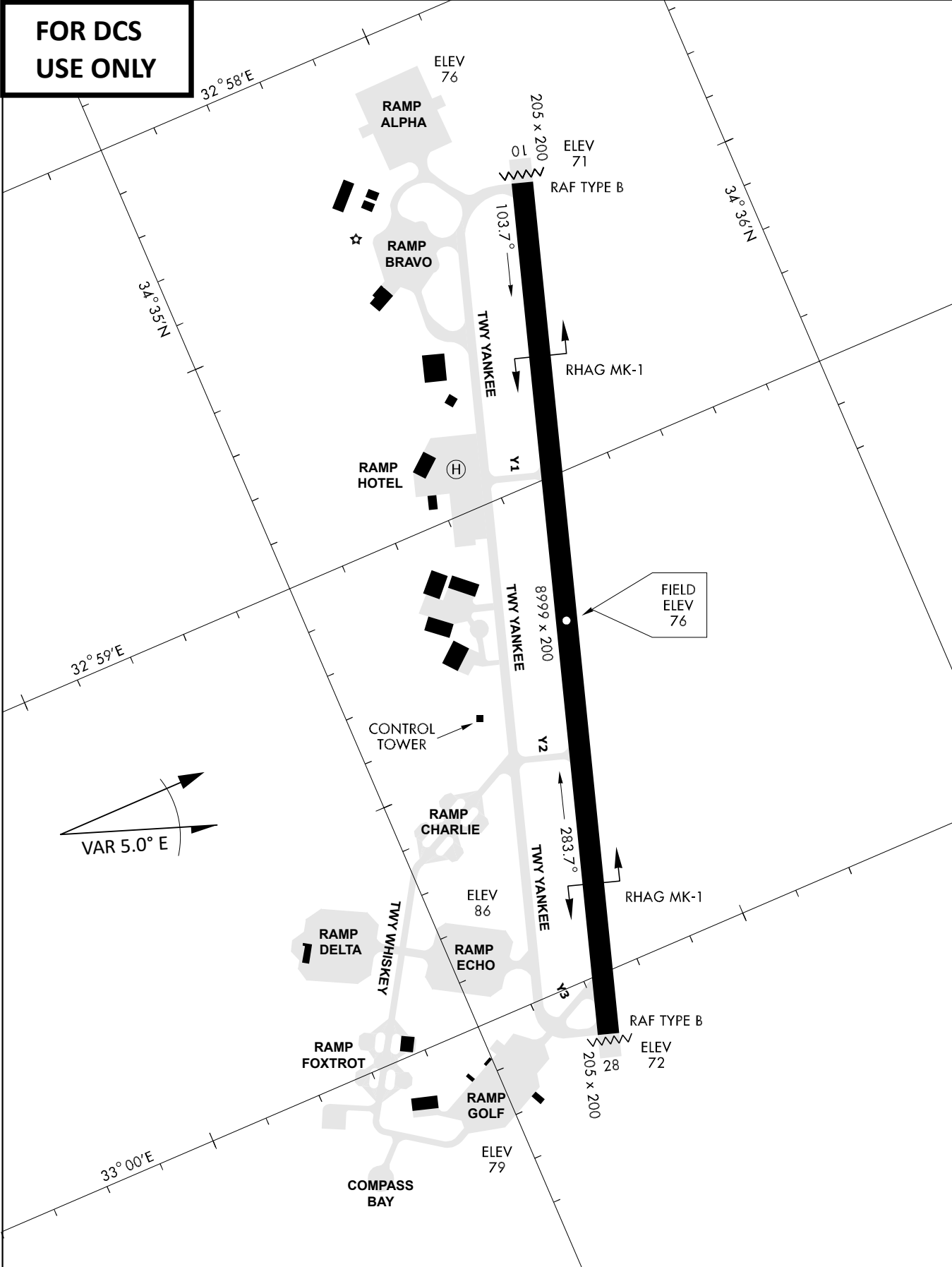
DEP RWY28 PAPA: Fly straight ahead to exit.

DEP RWY28 LAKE: Fly straight ahead until coast, than right turn direct exit.

DEP RWY28 SIERRA: Fly straight ahead until coastline, then climbing left turn, intercept AKR R-180 to exit.

DEP ECHO: no exit.

**FOR DCS
 USE ONLY**



ATIS	AKROTIRI GND	AKROTIRI TWR	OVERLORD CONTROL	TACAN	FIELD ELEVATION
288.20 MHz	240.10 122.10	339.85 130.075	377.8	AKR 107X	75 [ft] 23 [m]