

**MISSION DATA CARD**

OPORD		Callsign		Mission		Date/Time		
2971/2024		Monster 2		Training		062000JUN24		
Task	CAS TRAINING					Freq		
AO	Range 64					132.25		
Departure				Recovery				
FYTTR LOW				STRYK				
#	Callsign		Pilot		IFF	TCN	LSR	NET
-1	Monster 2-1		addiks		1521	1Y	1651	25/01
-2	Monster 2-2		Stoner		1522	64Y	1652	25/02

**LOADOUT**

A/A	C9M				GUN	100% CM	
A/G	7M282L, A65D, 2xG12, A65L				CHF	120	
POD	A184L, TGP				FLR	360	
TKS					FUEL	100%	

**TOLD**

	Takeoff	Target	Joker	Bingo	Land
FUEL	11087				

**AIRBASES**

	Name	TCN	ATIS	GND	TWR	RWY	Elev	ILS
Dep	Nellis AFB	12X	270.1	275.8	327.0	21L	1850	109.1
Arr	Nellis AFB	12X	270.1	275.8	327.0	21L	1850	109.1
Div	Creech AFB	87X	290.45	275.8	360.6			

**FLIGHTPLAN**

#	Name	Navaid/Coords/DME	ALT	TOT
1	FYTTR	LSV 269/33 (N36 21.440 W115 41.470)		
2	Range 64A	N36 55.505 W115 38.050		
3	Range 64B	N36 46.995 W115 38.050		
4	STRYK	LSV 282/26 (N36 25.620 W115 30.700)		
5	GASS PEAK	LSV 309/12 (N36 24.140 W115 10.660)		
6	CRAIG	LSV 263/5.5 (N36 15.250 W115 08.270)		
7	SIMNS	LSV 276/8 (N36 17.340 W115 10.750)		
8	APEX	LSV 027/09 (N36 21.580 W114 54.340)		
9	Nellis	N36 14.680 W115 01.500		
10	Range 63A	N36 44.004 W115 27.455		
11	Range 63B	N36 34.499 W115 26.329		
12	Range 63C	N36 29.969 W115 27.300		
13	Range 65A	N37 03 W115 44.550		
14	Range 65B	N36 55.504 W115 49.525		
15	Range 65C	N36 45.680 W115 49.549		
16	Range 65D	N36 37.995 W115 52.725		
17	Range 64C	N36 39.684 W115 42.200		
18	Range 64D	N36 36.994 W115 44.495		
19	Range 64E	N36 37.697 W115 39.319		
20	Range 64F	N36 34.900 W115 35.590		

**COMMS**

Radio	Usage
1	132.25
2	11 - 3 - 4 - 16 - 11 - 4 - 3
3	35.5

## NOTES

JTAC: Ninja-5 35.5

**OTHER FLIGHTS**

Callsign	Mission	Airframe	Freq	TCN	Grpld	Laser
Nazgul 6	CAS	4x F-15E	262.45	1/64		156X
AO	R76	Task	CAS Workshop			
Playboy* 6	Training	1x Ground	135.25	1/64		170X
AO	R76	Task				
Devil* 6	JTAC	1x Ground	35.75	1/64		170X
AO	R63	Task	Apaches			
Ninja* 5	JTAC	2x Ground	35.5	1/64		157X
AO	R64	Task	Hogs n Hornets			

**RADIO CHANNELS**

#	Freq	Name
1		Flight/Squadron specific
2	289.4	Nellis Clearance Delivery
3	275.8	Nellis Ground
4	327.0	Nellis Tower
5	385.4	Nellis Approach/Departure West
6	273.55	Nellis Approach/Departure East
7	317.525	Nellis Control -- Sally
8	254.4	Nellis Control-- Lee
9	305.6	SOF Bullseye
10	343.725	EMERGENCY SINGLE FRQ
11	270.1	Nellis ATIS
12	360.625	Creech AFB Tower
13	250.1	HAVE QUICK 13
14	251.1	HAVE QUICK 14
15	252.1	HAVE QUICK 15
16	377.8	Blackjack
17	265.0	KC-135 AR-641A
18	360.8	KC-135MPRS AR-635
19	319.8	KC-135MPRS AR-625
20	300.05	KC-135 AR-231V

**RAMROD**

0	1	2	3	4	5	6	7	8	9
H	Y	P	E	R	B	O	L	A	S

**KTC 1400 C**

	0	1	2	3	4	5	6	7	8	9
A	VEFY	AGH	UDT	SN	ML	CKB	WP	QR	JO	XI
B	VGCH	PEA	YRM	WU	SK	BXI	DQ	TO	FJ	NL
C	EIUN	HLK	MDY	WG	RC	VOJ	FX	QT	PA	SB
D	WVJK	HAQ	TEM	IL	DN	YBS	OR	FX	CG	PU
E	RCXH	FMT	BOL	GW	UI	DKJ	YS	VA	PE	NQ
F	BGRW	OLC	HNK	UT	YX	SDM	VQ	IP	JE	AF
G	RFNH	OGQ	TXW	LV	SU	KBI	MC	JY	AP	ED
H	HGVR	FEC	IWS	AY	NT	PKJ	DM	QB	OL	XU
I	QGVE	IRH	FJP	LO	DT	MUC	YB	SN	WA	XK
J	NQJF	VSI	RTL	MK	XO	DWB	UP	HC	GE	YA
K	MFVH	OBJ	TUP	KA	RQ	GIY	WD	CX	LN	SE
L	RGWY	QDT	CXM	AB	EL	JHV	PU	FK	NS	OI
M	CPYJ	RBM	HIT	WN	DV	UGO	EQ	FK	XL	SA
N	WTEF	HRN	ASU	LJ	DO	KGM	BI	YQ	XV	PC
O	BXPS	MNC	DGU	OT	VE	WJI	YK	HR	FL	QA
P	CJNR	GOT	UMF	XK	VP	BIE	LW	HD	YQ	AS
Q	OSFW	EDK	UCX	MR	PA	NHT	GV	QI	JY	BL
R	EIBC	FSO	NLY	DJ	HQ	PTV	AX	RK	UM	WG
S	RQIE	YBP	DCW	NA	GK	SFU	LV	TO	MJ	HX
T	VOTY	PGD	QAB	ES	WH	LNU	MK	FC	JX	RI
U	XCKU	TQL	SMV	AD	PR	YJW	GE	IN	OF	BH
V	XUAF	PBS	IYK	LE	WR	QDC	NG	TO	MJ	HV
W	PRHE	VGI	LKQ	AW	OS	BTD	CM	XY	FU	JN
X	YWTN	OVA	PFH	KU	IS	GBC	JD	RQ	EX	LM
Y	TQVO	SGJ	EHL	AC	YW	XKN	IU	PR	DM	FB

**NAVAIDS**

<b>Id</b>	<b>Name</b>	<b>Channel</b>	<b>Position</b>	<b>Elevation</b>
BCE	Bryce Canyon	75	N3741.35 W11218.23	9040
BIH	Bishop	33	N3722.62 W11821.99	4114
BLD	Boulder	114	N3559.75 W11451.82	3650
BTY	Beatty	94	N3648.54 W11644.86	2925
CDC	Cedar City	120	N3747.24 W11304.90	5463
DAG	Daggett	79	N3457.75 W11634.69	1760
EED	Needles	99	N3445.96 W11428.43	650
GFS	Goffs	91	N3507.87 W11510.59	4019
GRL	Groom Lake	18	N3713.91 W11548.16	4475
HEC	Hector	74	N3447.83 W11627.78	1854
ILC	Wilson Creek	110	N3815.02 W11423.65	9318
INS	Creech AFB	87	N3635.20 W11540.12	3101
LAS	McCarran Intl	116	N3604.78 W11509.59	2142
LSV	Nellis	12	N3614.68 W11501.50	1864
MLF	Milford	58	N3821.62 W11300.79	4977
MMM	Mormon Mesa	90	N3646.16 W11416.65	2120
MVA	Mina	98	N3833.92 W11801.97	7860
OAL	Coale Dale	124	N3800.20 W11746.23	4800
PGS	Peach Springs	57	N3537.48 W11332.67	4754
TPH	Tonopah Muni	119	N3801.84 W11702.01	5330
TQQ	Silverbow	77	N3748.00 W11647.00	5500
UTI	St George	23	N3705.29 W11335.53	2871



RWY 3L-21R  
 PCN 46 R/C/W/T  
 RWY 3R-21L  
 PCN 51 R/C/W/T  
 2017

PAR	RWY	CAT	MINIMA		ARP	ELEV	Scale 1:35'500	
	21L	A B D E	2057 - 0.8 200	(200-0.8/1.6) GS 3°	36° 14.060° N 115° 01.058° W	1857 [ft] 566 [m]	0 300 600 900 1200 1500 [m]	
	3R	A B D E	2057 - 0.8 200	(200-0.8/1.6) GS 3°			0 1000 2000 3000 4000 5000 [ft]	
SRA	21R	A C D E	2257 - 1.2 350	(350-1.2/1.6)				
	3L	A C D E	2257 - 1.2 350	(350-1.2/1.6)				

RWY	TORA	TODA	ASDA	LDA	PSN	THR	ALS
21L	10051 [ft] 3063 [m]	11051 [ft] 3368 [m]	11051 [ft] 3368 [m]	10051 [ft] 3063 [m]	36°14.043' N	115°01.018' W	⊕
3R	10120 [ft] 3084 [m]	11120 [ft] 3398 [m]	11120 [ft] 3398 [m]	10120 [ft] 3084 [m]	36°13.029' N	115°02.038' W	

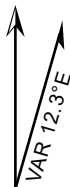
ATIS	NELLIS GROUND	NELLIS TOWER	NELLIS CONTROL	TACAN	ILS RWY 21L	NELLIS EAST	NELLIS WEST
270.100 MHz	275.800   121.800	327.000   132.55	317.525	LSV 12X	109.10 Mhz	384.400	385.000



# FYTTR LOW VISUAL OPERATION CHART | VALID 2014

ATIS  
270.100  
NELLIS GROUND  
275.800  
NELLIS TOWER  
327.000  
NELLIS CONTROL  
317.525  
NELLIS DEP/APP EAST  
384.400  
BLACKJACK  
377.800

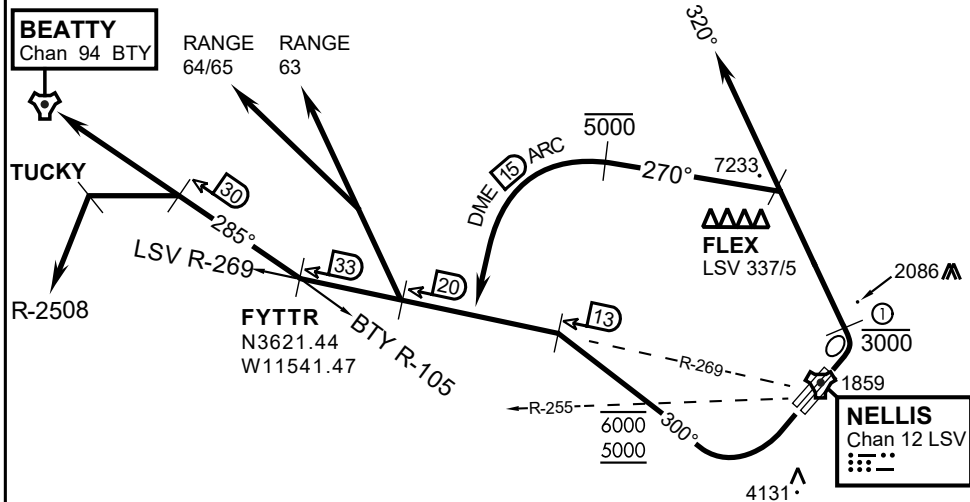
CAUTION: If unable to comply with restrictions advise ATC prior to departure.



## VMC ONLY

### PILOT RESPONSIBLE FOR TERRAIN AVOIDANCE

① 4 NM from RWY 3L/R



### DEPARTURE ROUTE DESCRIPTION

#### TAKEOFF RWY 3L/R:

- Remain below 3,000' MSL until north of Race Track and turned westbound.
- Turn left within 4NM of Nellis direct FLEX. Fly north of FLEX and turn left heading 270°.
- Intercept LSV 15 DME ARC at or below 5,000' MSL.
- ARC south, intercept LSV R-269 outbound. Maintain VFR.

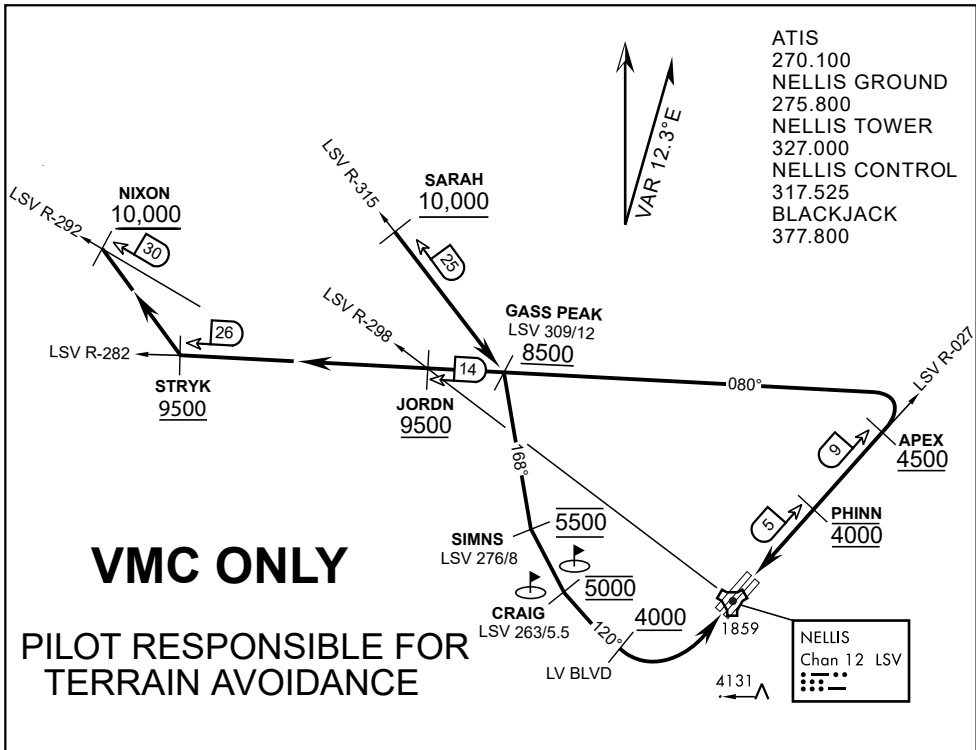
#### TAKEOFF RWY 21L/21R:

- Follow Noise Abatement Procedures.
- Fly runway heading until past Golf Course, turn right heading 300°.
- Cross LSV R-255 between 5,000' and 6,000' , intercept and proceed outbound on the LSV R-269.Recommend climb to 8,500' MSL or appropriate VFR altitude for overflight of North Las Vegas Training Area. Fly routing for appr. mission/transition.

#### TRANSITIONS:

- R-4806:** Turn right at the LSV 269/20 direct to assigned ranges.
- BEATTY:** Turn right at FYTTR direct BTY via the BTY R-105
- R-2508:** Turn right at the FYTTR, intercept the BTY 105/30, direct TUCKY, then direct R-2508

## FYTTR DEPARTURE AND TRANSITIONS (FYTTR LOW)



ATIS  
270.100  
NELLIS GROUND  
275.800  
NELLIS TOWER  
327.000  
NELLIS CONTROL  
317.525  
BLACKJACK  
377.800

**VMC ONLY**

**PILOT RESPONSIBLE FOR  
TERRAIN AVOIDANCE**

**APPROACH ROUTE DESCRIPTION**

**APPROACH RWY 3L/R**

Cross STRYK at or above 9,500' MSL, proceed direct GASS PEAK. Cross JORDN at or above 9,500' MSL, cross GASS PEAK at or above 8,500' MSL. Proceed direct SIMNS and cross at 5,500' MSL. Cross Las Vegas Blvd at or above 4,000' MSL then to 3,500' MSL for Initial. Remain within 4 DME if LSV on turn to final.

**VFR STRAIGHT-IN RWY 3L/R**

Depart CRAIG & descend to be at 3,000' MSL by Las Vegas Blvd. Do not descend below 3,000' MSL until within 5 DME of LSV or 4 NM of the runway on turn to final.

**APPROACH RWY 21L/R**

Cross STRYK at or above 9,500' MSL, proceed direct GASS PEAK. Cross JORDN at or above 9,500' MSL, cross GASS PEAK at or above 8,500' MSL. Cross APEX at or above 4,500' MSL then direct 5NM initial. Descend to cross PHINN at 4,000' MSL, Inside 5 NM descend to 3,500' MSL.

**VFR STRAIGHT-IN RWY 21L/R**

Cross APEX at 4,000' MSL. Descend to be at 3,000' MSL at PHINN. Descend to 3,000' MSL at LSV 027/5.

**RANGE 63B EXIT**

**SOUTH:** Via NIXON at or above 10,000' MSL, then direct STRYK.

**EAST:** Via SARAH at or above 10,000' MSL, then direct GASS PEAK.



INDIAN SPRINGS, NEVADA

TACAN INS Chan 87	APCH CRS 065°	Rwy ldg TDZE 3133	9002 3113
		Arpt Elev 3113	

INDIAN SPRINGS AF AUX (KINS)

**▼** \* MISSED APPROACH: Straight ahead to INS TACAN, intercept INS R-outbound, cross 17 DME at or above 9500, then direkt KSV TACAN 114

NELLIS CON

CREECH AFB TOWER  
118.30 60.60

GND CON

**NOT FOR CIVIL USE**

FOR USE UNDER BASIC VFR  
WEATHER MINIMUMS ONLY

PILOT IS RESPONSIBLE FOR TERRAIN/OBSTACLE AVOIDANCE AND APPROPRIATE VFR CLOUD CLEARANCE FOR ALL

**CAUTION:** Descent gradients are greater than allowed under standard TERPS criteria and inbound course does not meet straight-in criteria

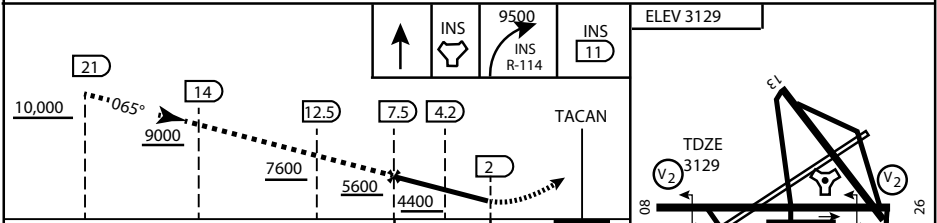
**CAUTION:** Final approach course crosses Runway centerline at MIDFIELD. Maneuvering left of course required prior to landing. Do not Maneuver farther north than the INS R- 258

Modified by viaBog 66 for use with DCS  
NOT FOR REAL LIFE NAVIGATION

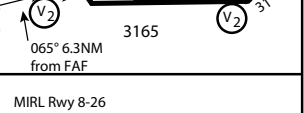
Modified by viaBog 66 for use with DCS  
NOT FOR REAL LIFE NAVIGATION



EMERG SAFE ALT 100 NM 14,000



CATEGORY	A	B	C	D	E
S-8	3760-1 ½	627 (700-1 ½)	3760-1¾ 627 (700-1¾)	3760-2 627 (700-2)	3760-2¼ 627 (700-2¼)
CIRCLING	NOT AUTHORIZED				



CITY OF INDIAN, NEVADA

INDIAN SPRINGS AF AUX (KINS)

(FOR DAY VFR USE ONLY)



# AIRPORT DIAGRAM

476 VFG

CREECH AFB (KINS)  
INDIAN SPRINGS, NEVADA

ATIS  
 122.5  
 CREECH TOWER  
 118.4 360.7 38.65  
 GND CON  
 118.3 275.8  
 CLNC DEL

FIELD  
 ELEV  
 3127

HOT  
 CARGO  
 PAD

VAR 12.5° E

WEST EOR

CONTROL  
 TOWER  
 BASE  
 OPS

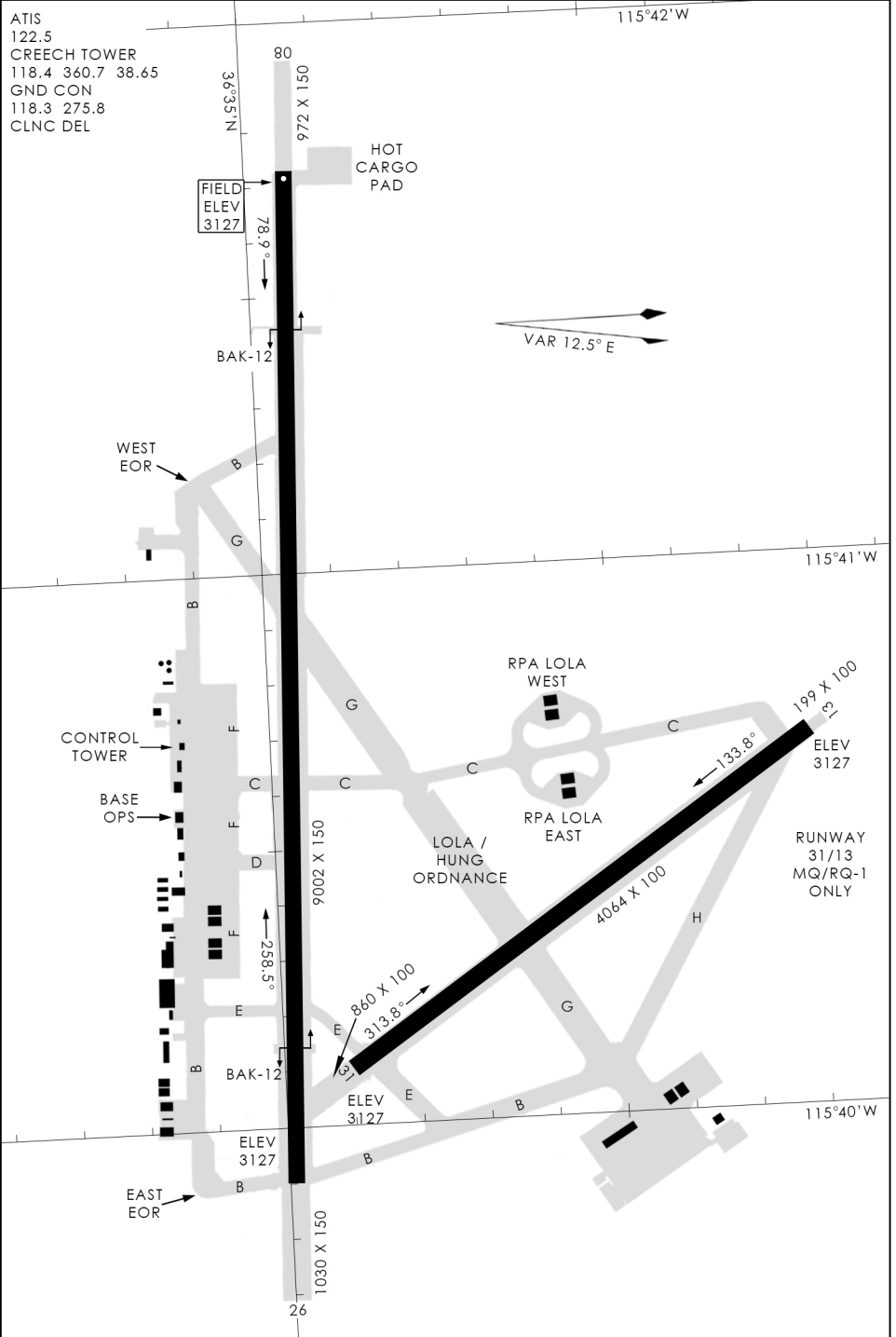
RPA LOLA WEST

RPA LOLA EAST

LOLA / HUNG ORDNANCE

RUNWAY  
 31/13  
 MQ/RQ-1  
 ONLY

EAST EOR



476 VFG JAN 2019

476 VFG JAN 2019

# AIRPORT DIAGRAM

INDIAN SPRINGS, NEVADA  
CREECH AFB (KINS)