

**MISSION DATA CARD**

OPORD		Callsign		Mission		Date/Time		
2970/2024		Edelweiss 1		Training		062000JUN24		
Task						Freq		
AO						264.15		
Departure				Recovery				
RWY10 VFR				RWY28 VFR				
#	Callsign		Pilot		IFF	TCN	LSR	NET
-1	Edelweiss 1-1		Like		1711	1Y	1711	

**LOADOUT**

A/A						GUN	
A/G						CHF	
POD						FLR	
TKS						FUEL	

**TOLD**

	Takeoff	Target	Joker	Bingo	Land
FUEL	10803				

**AIRBASES**

	Name	TCN	ATIS	GND	TWR	RWY	Elev	ILS
Dep	Akrotiri AFB	107X	288.2	240.1	339.85	28	62	109.7
Arr	Akrotiri AFB	107X	288.2	240.1	339.85	28	62	109.7

**FLIGHTPLAN**

#	Name	Navaid/Coords/DME	ALT	TOT
1	PAPA	N34 39.390 E032 46.480		

**COMMS**

Radio	Usage
1	288.2
2	339.85
3	32

**OTHER FLIGHTS**

Callsign	Mission	Airframe	Freq	TCN	Grpld	Laser
T-Rex 2	Training	2x A-10C	132.25	21/84	25	156X
AO	AAR Shell3	Task	AAR			
Edelweiss 1	Training	4x F-16C	134.0	1/64		162X
AO	Bomb Range	Task	Bomb Training			

**RADIO CHANNELS**

#	Freq	Name
1		Flight/Squadron specific
2	288.2	Akrotiri ATIS
3	240.1	Akrotiri Ground
4	339.85	Aktrotiri Tower
5	335.05	Akrotiri Approach
6	360.1	Incirlik Tower
7	371.35	Incirlik Ground
8	377.475	Incirlik ATIS
9		No Preset
10	127.3	Paphos ATIS
11	353.8	Paphos Tower
12	304.0	CVN-73 George Washington
13	302.0	LHA-1 Tarawa
14	259.0	CV-59 Forrestal
15		No Preset
16	377.8	Overlord
17	265.0	KC-135 Texaco-1 medium/slow
18	319.8	KC-135 Arco-1
19	360.8	KC-135MPRS Arco-2
20	256.0	S-3B Recovery Tanker

**RAMROD**

0	1	2	3	4	5	6	7	8	9
H	Y	P	E	R	B	O	L	A	S

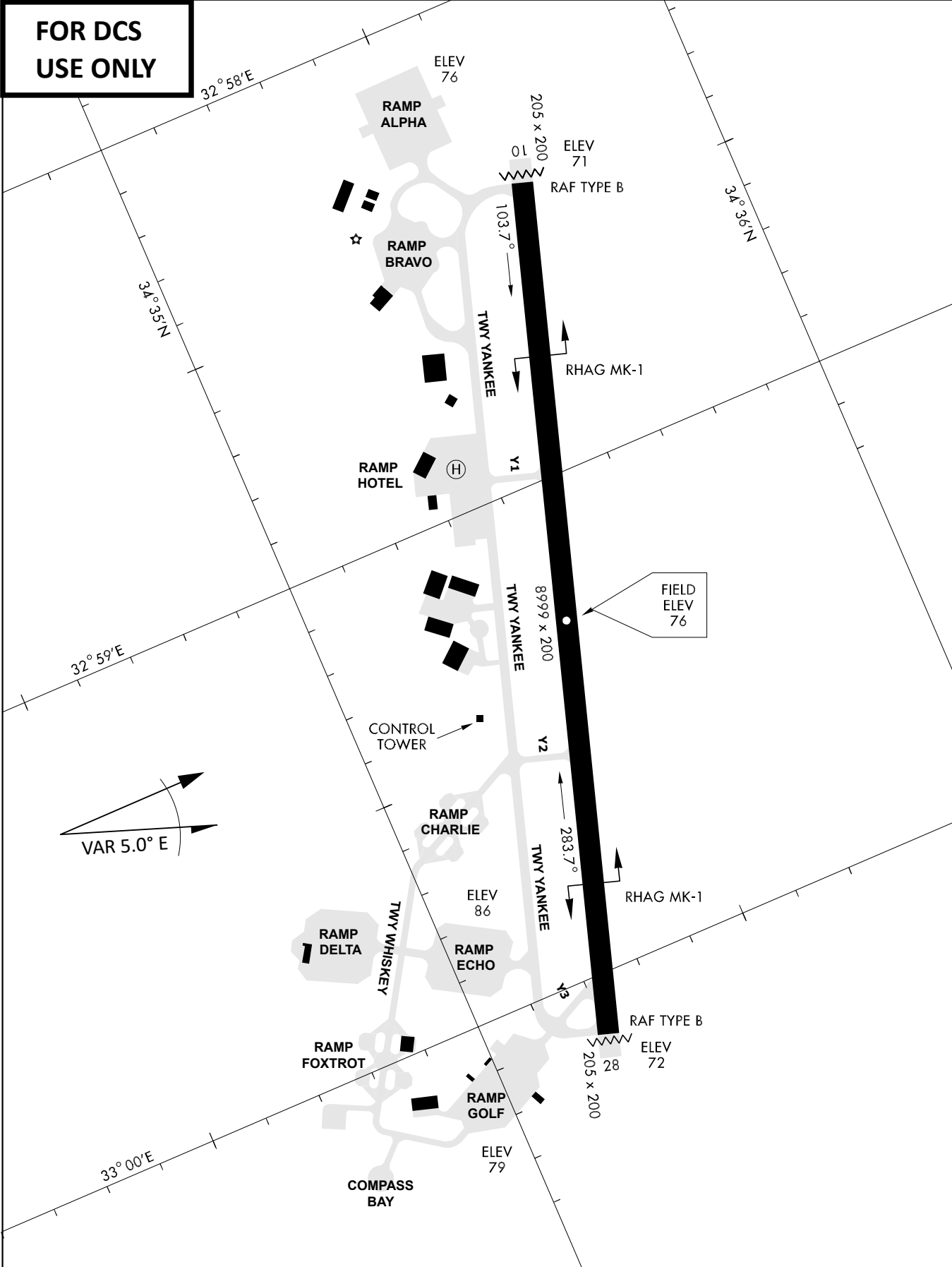
**KTC 1400 C**

	0	1	2	3	4	5	6	7	8	9
A	VEFY	AGH	UDT	SN	ML	CKB	WP	QR	JO	XI
B	VGCH	PEA	YRM	WU	SK	BXI	DQ	TO	FJ	NL
C	EIUN	HLK	MDY	WG	RC	VOJ	FX	QT	PA	SB
D	WVJK	HAQ	TEM	IL	DN	YBS	OR	FX	CG	PU
E	RCXH	FMT	BOL	GW	UI	DKJ	YS	VA	PE	NQ
F	BGRW	OLC	HNK	UT	YX	SDM	VQ	IP	JE	AF
G	RFNH	OGQ	TXW	LV	SU	KBI	MC	JY	AP	ED
H	HGVR	FEC	IWS	AY	NT	PKJ	DM	QB	OL	XU
I	QGVE	IRH	FJP	LO	DT	MUC	YB	SN	WA	XK
J	NQJF	VSI	RTL	MK	XO	DWB	UP	HC	GE	YA
K	MFVH	OBJ	TUP	KA	RQ	GIY	WD	CX	LN	SE
L	RGWY	QDT	CXM	AB	EL	JHV	PU	FK	NS	OI
M	CPYJ	RBM	HIT	WN	DV	UGO	EQ	FK	XL	SA
N	WTEF	HRN	ASU	LJ	DO	KGM	BI	YQ	XV	PC
O	BXPS	MNC	DGU	OT	VE	WJI	YK	HR	FL	QA
P	CJNR	GOT	UMF	XK	VP	BIE	LW	HD	YQ	AS
Q	OSFW	EDK	UCX	MR	PA	NHT	GV	QI	JY	BL
R	EIBC	FSO	NLY	DJ	HQ	PTV	AX	RK	UM	WG
S	RQIE	YBP	DCW	NA	GK	SFU	LV	TO	MJ	HX
T	VOTY	PGD	QAB	ES	WH	LNU	MK	FC	JX	RI
U	XCKU	TQL	SMV	AD	PR	YJW	GE	IN	OF	BH
V	XUAF	PBS	IYK	LE	WR	QDC	NG	TO	MJ	HV
W	PRHE	VGI	LKQ	AW	OS	BTD	CM	XY	FU	JN
X	YWTN	OVA	PFH	KU	IS	GBC	JD	RQ	EX	LM
Y	TQVO	SGJ	EHL	AC	YW	XKN	IU	PR	DM	FB

**NAVAIDS**

<b>Id</b>	<b>Name</b>	<b>Channel</b>	<b>Position</b>	<b>Elevation</b>
DAN	Incirlik	21	N37 00.950 E035 26.883	243
AKR	Akrotiri	107	N34 34.765 E032 57.769	147
PHA	Paphos	79	N34 42.997 E032 28.963	35
RMD	Ramat David	84	N32 39.892 E035 11.265	136
OS66	Kuweires Military Aviation Institute	36	N36 11.362 E037 34.226	1200

**FOR DCS  
 USE ONLY**



ATIS	AKROTIRI GND	AKROTIRI TWR	OVERLORD CONTROL	TACAN	FIELD ELEVATION
288.20 MHz	240.10   122.10	339.85   130.075	377.8	AKR 107X	<b>75 [ft] 23 [m]</b>

ATIS  
 288.20  
 AKROTIRI GROUND  
 240.10  
 AKROTIRI TOWER  
 339.85  
 OVERLORD  
 377.80

NOT FOR CIVIL USE

CAUTION: If unable to comply with restrictions advise ATC prior to departure.



**LAKE**

N 34 45.14  
E 032 55.40

1854'

Dam 1253'

2592'

LIMASSOL

**ECHO**

N 34 42.60  
E 033 10.00

**INITIAL 10**

N 34 37.15  
E 032 52.67

**AKROTIRI**

AKR

116.00 AK

Chan107X

**NDB AK**

365.00 kHz

**PAPA**

N 34 39.39  
E 032 46.48

4,000  
2,000

DME ARC

**SIERRA**

N 34 25.31  
E 032 58.40

MEDITERRANEAN SEA

**ARR / DEP ROUTE DESCRIPTION**

ARRIVAL GENERAL

Pass Entry at 5.000' or below. Overhead Brake RWY 10: pass INITIAL 10 at 2.000' MSL. Straight-in RWY 10 : pass INITIAL 1.500' or below.

ARR RWY10 PAPA / LAKE: Direct initial.

ARR RWY10 SIERRA: Intercept ARC 7 of AKR to INITIAL 10.

ARR ECHO: no ENTRY.

DEPARTURE GENERAL

Pass Departure end of runway at 1.000' AGL or below. Keep RWY heading until coastline.

DEP RWY10 ECHO: Direct EXIT.

DEP RWY10 SIERRA: Climbing right turn, intercept R180 AKR to Sierra.

DEP RWY10 PAPA: Climbing right turn until R180 AKR, then direct Papa

DEP LAKE: no EXIT.

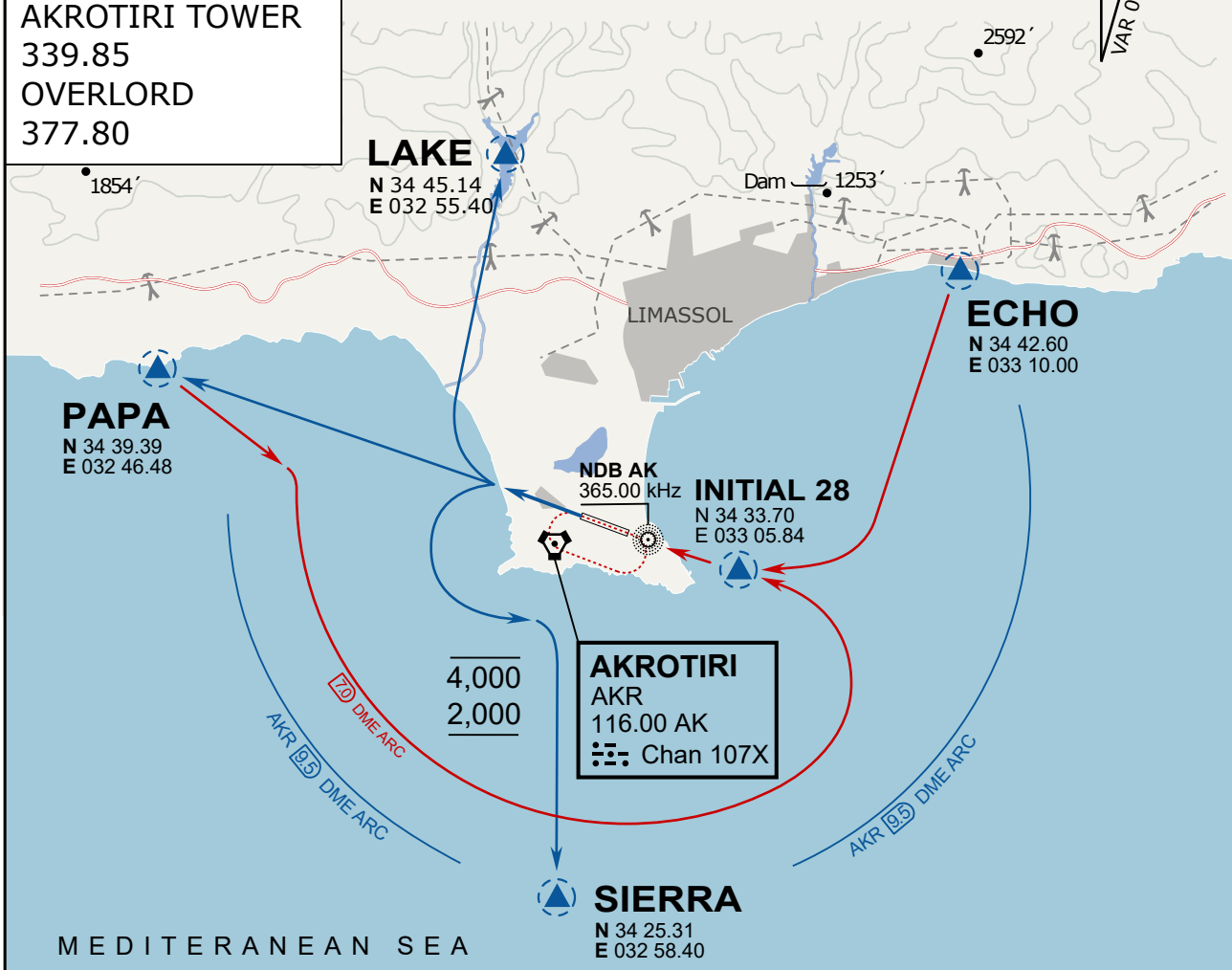
vJaBoG32 ETTR NAV CHART



ATIS  
 288.20  
 AKROTIRI GROUND  
 240.10  
 AKROTIRI TOWER  
 339.85  
 OVERLORD  
 377.80

NOT FOR CIVIL USE

CAUTION: If unable to comply with restrictions advise ATC prior to departure.



**ARR / DEP ROUTE DESCRIPTION**

**STRAIGHT-IN RWY28**

Pass ENTRY at 5.000' MSL or below, pass INITIAL at 1.500' MSL or below.

**OVERHEAD BREAK RWY28**

Pass ENTRY at 5.000' MSL or below, pass INITIAL at 2.000' MSL, break to the south.

**DEPARTURE GENERAL**

Pass Departure end of runway at 1.000' or below.

DEP RWY28 PAPA: Fly straight ahead to exit.

DEP RWY28 LAKE: Fly straight ahead until coast, than right turn direct exit.

DEP RWY28 SIERRA: Fly straight ahead until coastline, then climbing left turn, intercept AKR R-180 to exit.

DEP ECHO: no exit.