

MISSION DATA CARD

OPORD		Callsign		Mission		Date/Time	
2967/2024		Nazgul 6		CAS		062000JUN24	
Task	CAS Workshop					Freq	
AO	R76					262.45	
Departure				Recovery			
FYTTR THREE				STRYK			
#	Callsign	Pilot	IFF	TCN	LSR	NET	
-1	Nazgul 6-1	Striver/Uta	1161	1Y	1561		
-2	Nazgul 6-2	Razorback	1162	64Y	1562		
-3	Nazgul 6-3	Repsus/Lempo	1163	64X	1563		

LOADOUT

A/A	2xA9M, 2xA120C	GUN	100% SAPHEI
A/G	G31B, 4xG12, G24, 3xG54	CHF	120
POD	TGT, NAV	FLR	60
TKS	FT610	FUEL	100%

TOLD

	Takeoff	Target	Joker	Bingo	Land
FUEL	26553				

AIRBASES

	Name	TCN	ATIS	GND	TWR	RWY	Elev	ILS
Dep	Nellis AFB	12X	270.1	275.8	327.0	21L	1850	109.1
Arr	Nellis AFB	12X	270.1	275.8	327.0	21L	1850	109.1

FLIGHTPLAN

#	Name	Navaid/Coords/DME	ALT	TOT
1	FYTTR	LSV 12X 269/33 (N36 21.440 W115 41.470)	14000	
2	IP	N37 17 W116 45	20000	
3	ECHO + TARGETs	N36 W116	20000	
4	Range 76	N37 24.499 W116 54.090	5000	
5	BELTED PK	N37 34 W116 04.500	20000	
6	Cedar Peak	TQQ 77X 092/56 (N37 42 W116 20)	20000	
7	NW Container	N37 28.049 W115 59.961	20000	
8	NE Container	N37 28.049 W115 34.974	20000	
9	SE Container	N37 06.116 W115 34.912	20000	
10	SW Container	N37 06.067 W116 00.023	20000	
11	NIXON	LSV 12X 292/30 (N36 32.010 W115 32.250)	10000	
12	STRYK	LSV 12X 282/26 (N36 25.620 W115 30.700)	9500	
13	GASS PEAK	LSV 12X 309/12 (N36 24.140 W115 10.660)	8500	
14	APEX	LSV 12X 027/09 (N36 21.580 W114 54.340)	4500	
15	PHINN	N36 18.427 W114 57.408	4000	

OTHER FLIGHTS

Callsign	Mission	Airframe	Freq	TCN	Grpld	Laser
Monster 2	Training	4x A-10C	132.25	1/64	25	165X
AO	Range 64	Task	CAS TRAINING			
Playboy* 6	Training	1x Ground	135.25	1/64		170X
AO	R76	Task				
Devil* 6	JTAC	1x Ground	35.75	1/64		170X
AO	R63	Task	Apaches			
Ninja* 5	JTAC	2x Ground	35.5	1/64		157X
AO	R64	Task	Hogs n Hornets			

RADIO CHANNELS

#	Freq	Name
1		Flight/Squadron specific
2	289.4	Nellis Clearance Delivery
3	275.8	Nellis Ground
4	327.0	Nellis Tower
5	385.4	Nellis Approach/Departure West
6	273.55	Nellis Approach/Departure East
7	317.525	Nellis Control -- Sally
8	254.4	Nellis Control-- Lee
9	305.6	SOF Bullseye
10	343.725	EMERGENCY SINGLE FRQ
11	270.1	Nellis ATIS
12	360.625	Creech AFB Tower
13	250.1	HAVE QUICK 13
14	251.1	HAVE QUICK 14
15	252.1	HAVE QUICK 15
16	377.8	Blackjack
17	265.0	KC-135 AR-641A
18	360.8	KC-135MPRS AR-635
19	319.8	KC-135MPRS AR-625
20	300.05	KC-135 AR-231V

RAMROD

0	1	2	3	4	5	6	7	8	9
H	Y	P	E	R	B	O	L	A	S

KTC 1400 C

	0	1	2	3	4	5	6	7	8	9
A	VEFY	AGH	UDT	SN	ML	CKB	WP	QR	JO	XI
B	VGCH	PEA	YRM	WU	SK	BXI	DQ	TO	FJ	NL
C	EIUN	HLK	MDY	WG	RC	VOJ	FX	QT	PA	SB
D	WVJK	HAQ	TEM	IL	DN	YBS	OR	FX	CG	PU
E	RCXH	FMT	BOL	GW	UI	DKJ	YS	VA	PE	NQ
F	BGRW	OLC	HNK	UT	YX	SDM	VQ	IP	JE	AF
G	RFNH	OGQ	TXW	LV	SU	KBI	MC	JY	AP	ED
H	HGVR	FEC	IWS	AY	NT	PKJ	DM	QB	OL	XU
I	QGVE	IRH	FJP	LO	DT	MUC	YB	SN	WA	XK
J	NQJF	VSI	RTL	MK	XO	DWB	UP	HC	GE	YA
K	MFVH	OBJ	TUP	KA	RQ	GIY	WD	CX	LN	SE
L	RGWY	QDT	CXM	AB	EL	JHV	PU	FK	NS	OI
M	CPYJ	RBM	HIT	WN	DV	UGO	EQ	FK	XL	SA
N	WTEF	HRN	ASU	LJ	DO	KGM	BI	YQ	XV	PC
O	BXPS	MNC	DGU	OT	VE	WJI	YK	HR	FL	QA
P	CJNR	GOT	UMF	XK	VP	BIE	LW	HD	YQ	AS
Q	OSFW	EDK	UCX	MR	PA	NHT	GV	QI	JY	BL
R	EIBC	FSO	NLY	DJ	HQ	PTV	AX	RK	UM	WG
S	RQIE	YBP	DCW	NA	GK	SFU	LV	TO	MJ	HX
T	VOTY	PGD	QAB	ES	WH	LNU	MK	FC	JX	RI
U	XCKU	TQL	SMV	AD	PR	YJW	GE	IN	OF	BH
V	XUAF	PBS	IYK	LE	WR	QDC	NG	TO	MJ	HV
W	PRHE	VGI	LKQ	AW	OS	BTD	CM	XY	FU	JN
X	YWTN	OVA	PFH	KU	IS	GBC	JD	RQ	EX	LM
Y	TQVO	SGJ	EHL	AC	YW	XKN	IU	PR	DM	FB

NAVAIDS

Id	Name	Channel	Position	Elevation
BCE	Bryce Canyon	75	N3741.35 W11218.23	9040
BIH	Bishop	33	N3722.62 W11821.99	4114
BLD	Boulder	114	N3559.75 W11451.82	3650
BTY	Beatty	94	N3648.54 W11644.86	2925
CDC	Cedar City	120	N3747.24 W11304.90	5463
DAG	Daggett	79	N3457.75 W11634.69	1760
EED	Needles	99	N3445.96 W11428.43	650
GFS	Goffs	91	N3507.87 W11510.59	4019
GRL	Groom Lake	18	N3713.91 W11548.16	4475
HEC	Hector	74	N3447.83 W11627.78	1854
ILC	Wilson Creek	110	N3815.02 W11423.65	9318
INS	Creech AFB	87	N3635.20 W11540.12	3101
LAS	McCarran Intl	116	N3604.78 W11509.59	2142
LSV	Nellis	12	N3614.68 W11501.50	1864
MLF	Milford	58	N3821.62 W11300.79	4977
MMM	Mormon Mesa	90	N3646.16 W11416.65	2120
MVA	Mina	98	N3833.92 W11801.97	7860
OAL	Coale Dale	124	N3800.20 W11746.23	4800
PGS	Peach Springs	57	N3537.48 W11332.67	4754
TPH	Tonopah Muni	119	N3801.84 W11702.01	5330
TQQ	Silverbow	77	N3748.00 W11647.00	5500
UTI	St George	23	N3705.29 W11335.53	2871



RWY 3L-21R
 PCN 46 R/C/W/T
 RWY 3R-21L
 PCN 51 R/C/W/T
 2017

PAR	RWY	CAT	MINIMA		ARP	ELEV	Scale 1:35'500	
	21L	A B D E	2057 - 0.8 200	(200-0.8/1.6) GS 3°	36° 14.060° N 115° 01.058° W	1857 [ft] 566 [m]	0 300 600 900 1200 1500 [m]	
	3R	A B D E	2057 - 0.8 200	(200-0.8/1.6) GS 3°			0 1000 2000 3000 4000 5000 [ft]	
	21R	A C D E	2257 - 1.2 350	(350-1.2/1.6)				
	3L	A C D E	2257 - 1.2 350	(350-1.2/1.6)				

RWY	TORA	TODA	ASDA	LDA	PSN	THR	ALS
21L	10051 [ft] 3063 [m]	11051 [ft] 3368 [m]	11051 [ft] 3368 [m]	10051 [ft] 3063 [m]	36°14.043' N	115°01.018' W	⊕
3R	10120 [ft] 3084 [m]	11120 [ft] 3398 [m]	11120 [ft] 3398 [m]	10120 [ft] 3084 [m]	36°13.029' N	115°02.038' W	

ATIS	NELLIS GROUND	NELLIS TOWER	NELLIS CONTROL	TACAN	ILS RWY 21L	NELLIS EAST	NELLIS WEST
270.100 MHz	275.800 121.800	327.000 132.55	317.525	LSV 12X	109.10 Mhz	384.400	385.000

FYTTTR THREE DEPARTURE IFR CHART | VALID 2014 LAS VEGAS, NEVADA

ATIS
270.100
NELLIS GROUND
275.800
NELLIS TOWER
327.000
NELLIS CONTROL
317.525
NELLIS DEP/APP EAST
384.400
BLACKJACK
377.800



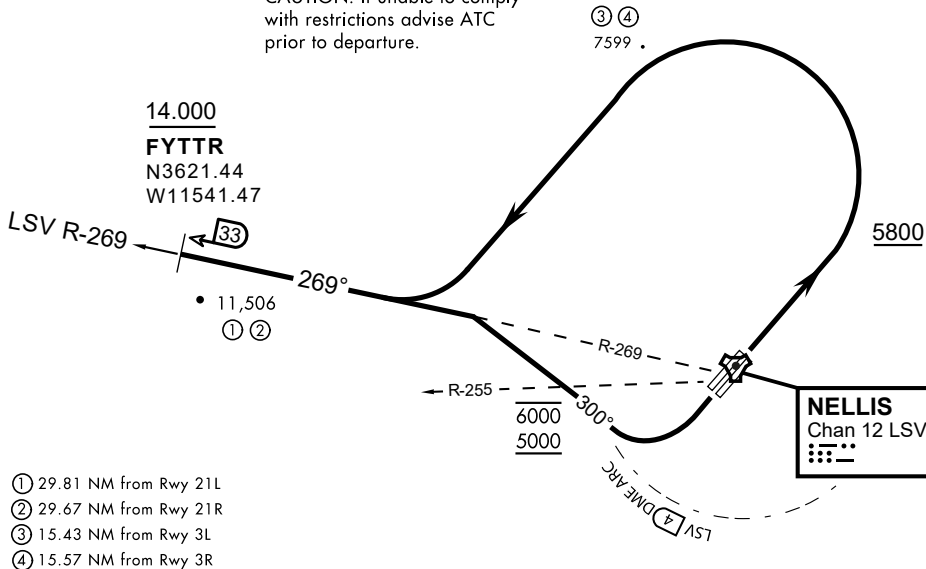
Rwy	Knots	60	120	180	240	300	360
3L (a)	V/V(fpm)	394	788	1182	1576	1970	2364
3R (a)	V/V(fpm)	392	784	1176	1568	1960	2352
21L (b)	V/V(fpm)	388	776	1164	1552	1940	2328
21R (b)	V/V(fpm)	390	780	1170	1560	1950	2340

Minimum Climb Rate

(a) to 9300

(b) to 13 500

CAUTION: If unable to comply with restrictions advise ATC prior to departure.



- ① 29.81 NM from Rwy 21L
- ② 29.67 NM from Rwy 21R
- ③ 15.43 NM from Rwy 3L
- ④ 15.57 NM from Rwy 3R

DEPARTURE ROUTE DESCRIPTION

TAKEOFF RWY 3L/R

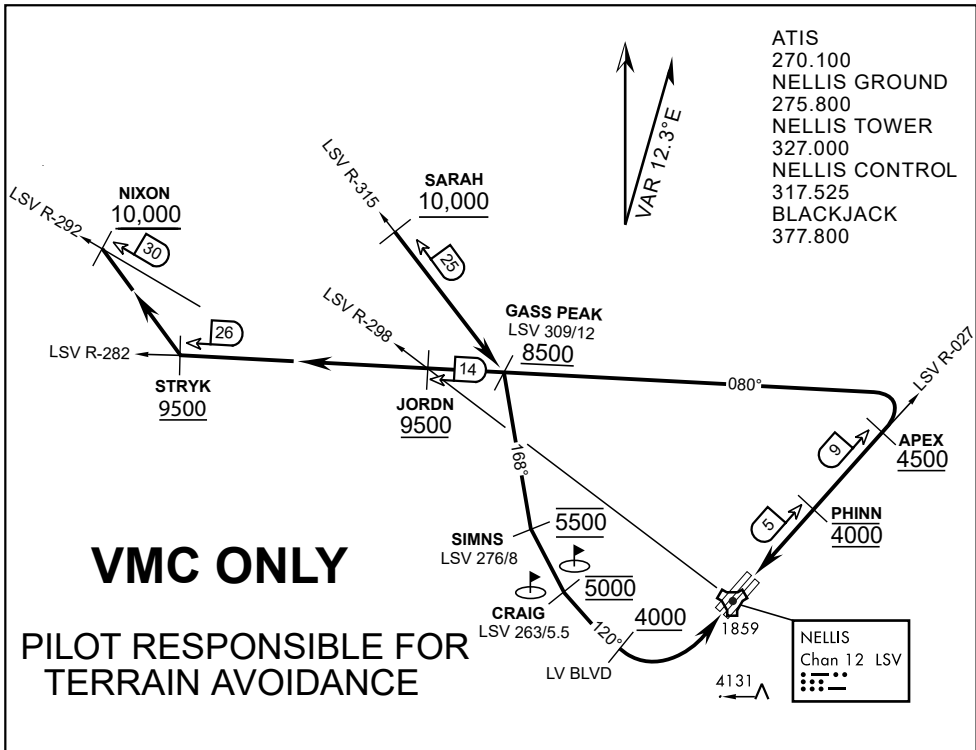
- Fly runway heading until reaching 5,800'.
- Then climbing left turn to intercept LSV TACAN R-269 outbound.
- Cross FYTTTR at or above 14,000' or as assigned, then via assigned route.

TAKEOFF RWY 21L/21R

- Turn right to intercept LSV TACAN R-269 outbound.
- Remain within LSV 4 DME until joining LSV R-269
- Cross R-255 between 5,000' and 6,000'.
- Cross FYTTTR at or above 14,000' or as assigned, then via assigned route.

NOISE ABATEMENT PROCEDURES:

Fly according Nellis Noise Abatement instructions as published



- ATIS
- 270.100
- NELLIS GROUND
- 275.800
- NELLIS TOWER
- 327.000
- NELLIS CONTROL
- 317.525
- BLACKJACK
- 377.800

VMC ONLY

PILOT RESPONSIBLE FOR TERRAIN AVOIDANCE

APPROACH ROUTE DESCRIPTION

APPROACH RWY 3L/R

Cross STRYK at or above 9,500' MSL, proceed direct GASS PEAK. Cross JORDN at or above 9,500' MSL, cross GASS PEAK at or above 8,500' MSL. Proceed direct SIMNS and cross at 5,500' MSL. Cross Las Vegas Blvd at or above 4,000' MSL then to 3,500' MSL for Initial. Remain within 4 DME if LSV on turn to final.

VFR STRAIGHT-IN RWY 3L/R

Depart CRAIG & descend to be at 3,000' MSL by Las Vegas Blvd. Do not descend below 3,000' MSL until within 5 DME of LSV or 4 NM of the runway on turn to final.

APPROACH RWY 21L/R

Cross STRYK at or above 9,500' MSL, proceed direct GASS PEAK. Cross JORDN at or above 9,500' MSL, cross GASS PEAK at or above 8,500' MSL. Cross APEX at or above 4,500' MSL then direct 5NM initial. Descend to cross PHINN at 4,000' MSL, Inside 5 NM descend to 3,500' MSL.

VFR STRAIGHT-IN RWY 21L/R

Cross APEX at 4,000' MSL. Descend to be at 3,000' MSL at PHINN. Descend to 3,000' MSL at LSV 027/5.

RANGE 63B EXIT

SOUTH: Via NIXON at or above 10,000' MSL, then direct STRYK.

EAST: Via SARAH at or above 10,000' MSL, then direct GASS PEAK.