

**MISSION DATA CARD**

OPORD		Callsign		Mission		Date/Time		
2957/2024		Edelweiss 1		Training		020000JUN24		
Task	Bomb Training					Freq		
AO	Bomb Range					134.0		
Departure				Recovery				
RWY10 SID				ILS 28				
#	Callsign		Pilot		IFF	TCN	LSR	NET
-1	Edelweiss 1-1		Jinx		1611	1Y	1621	

**LOADOUT**

A/A	2xA120C, 2xA9X				GUN	100% HEI-T	
A/G	6xM82				CHF	120	
POD	HTS, A184, TGP				FLR	0	
TKS	2xFT300				FUEL	100%	

**TOLD**

	Takeoff	Target	Joker	Bingo	Land
FUEL	11169				

**AIRBASES**

	Name	TCN	ATIS	GND	TWR	RWY	Elev	ILS
Dep	Akrotiri AFB	107X	288.2	240.1	339.85	28	62	109.7
Arr	Akrotiri AFB	107X	288.2	240.1	339.85	28	62	109.7
Div	Akrotiri AFB	107X	288.2	240.1	339.85	28	62	109.7

**FLIGHTPLAN**

#	Name	Navaid/Coords/DME	ALT	TOT
1	ECHO	N34 42 31.443 E033 10 00.221	5000	
2	PAPA	N34 39 43.973 E032 49 10.352	5000	
3	IREFA	N34 25.328 E033 26.664	9000	
4	IP	N34 48 57.880 E033 52 07.886	20000	
5	TGT	N34 57 00.512 E033 52 09.188	100	
6	RAF Akrotiri	N34 35 26 E032 59 17	1500	

**SUPPORT****Tanker**

Callsign	TCN	Freq	ALT	TAS
ARCO 1	22Y	319.8	FL222	400
Pos	ARCO1: (N3701 E03457)			

**RADIO CHANNELS**

#	Freq	Name
1		Flight/Squadron specific
2	288.2	Akrotiri ATIS
3	240.1	Akrotiri Ground
4	339.85	Aktrotiri Tower
5	335.05	Akrotiri Approach
6	360.1	Incirlik Tower
7	371.35	Incirlik Ground
8	377.475	Incirlik ATIS
9		No Preset
10	127.3	Paphos ATIS
11	353.8	Paphos Tower
12	304.0	CVN-73 George Washington
13	302.0	LHA-1 Tarawa
14	259.0	CV-59 Forrestal
15		No Preset
16	377.8	Overlord
17	265.0	KC-135 Texaco-1 medium/slow
18	319.8	KC-135 Arco-1
19	360.8	KC-135MPRS Arco-2
20	256.0	S-3B Recovery Tanker

**RAMROD**

0	1	2	3	4	5	6	7	8	9
S	T	O	C	K	A	D	I	N	G

**KTC 1400 C**

	0	1	2	3	4	5	6	7	8	9
A	GWSD	KEU	MLQ	VP	BN	AOF	RC	TX	YJ	HI
B	CGRE	XTQ	YVD	AJ	MK	SIP	WO	FU	BL	HN
C	XFVC	TNO	AKD	YW	UI	PBE	MJ	GH	RL	QS
D	XFSU	BOE	WIT	JD	GQ	CNP	AY	VK	LH	RM
E	VJOY	LTU	SGH	NR	AW	CEF	PI	MB	DQ	KX
F	RCKM	AXN	PJY	UE	BV	QGI	FH	WO	TS	DL
G	RGQD	LUB	KSJ	TX	NH	ACI	PO	WM	YE	VF
H	FORD	LYW	QHV	IM	XU	EAK	SP	BG	TC	JN
I	AOPX	GFV	LUD	KB	CY	TNM	JQ	WI	SH	RE
J	UWJD	INK	GSL	VR	TY	AXP	QB	EF	OC	MH
K	UKDR	GVA	STM	IL	WY	HOP	QJ	CX	NF	EB
L	JQNP	THF	AVO	WR	DL	EMX	KU	SI	YB	GC
M	PQSR	EVB	NFL	WC	UG	TKO	XD	IJ	HY	MA
N	CIQH	OGX	LKW	NJ	PA	DRT	UM	YE	VF	SB
O	QINX	MYF	RWV	PC	TL	SBE	DK	AG	JU	HO
P	IEUX	MWH	KYT	GF	QD	CPA	RL	NV	BO	SJ
Q	MKCH	NXV	GTB	YW	SQ	OUJ	FE	ID	PA	RL
R	GLYX	VJT	WNQ	IM	KP	FER	UD	CB	AH	OS
S	RFXJ	DEA	TCH	PQ	YV	ONM	KB	IW	UL	SG
T	WTOX	LRS	IEK	JQ	FY	UHC	VG	DN	BA	PM
U	JLKS	BWM	NVF	XR	DP	TEH	AQ	CI	OU	YG
V	JFSX	CBV	PLN	UG	AW	YEQ	MI	KR	TO	HD
W	SUDW	NGE	BRL	PC	QA	KYT	JV	FM	IX	HO
X	UJVR	MGF	TQO	NS	HI	PBC	KW	LE	DY	XA
Y	DHAV	XSY	FJG	LP	TR	EWQ	IB	UO	CK	MN

**NAVAIDS**

<b>Id</b>	<b>Name</b>	<b>Channel</b>	<b>Position</b>	<b>Elevation</b>
DAN	Incirlik	21	N37 00.950 E035 26.883	243
AKR	Akrotiri	107	N34 34.765 E032 57.769	147
PHA	Paphos	79	N34 42.997 E032 28.963	35
RMD	Ramat David	84	N32 39.892 E035 11.265	136
OS66	Kuweires Military Aviation Institute	36	N36 11.362 E037 34.226	1200

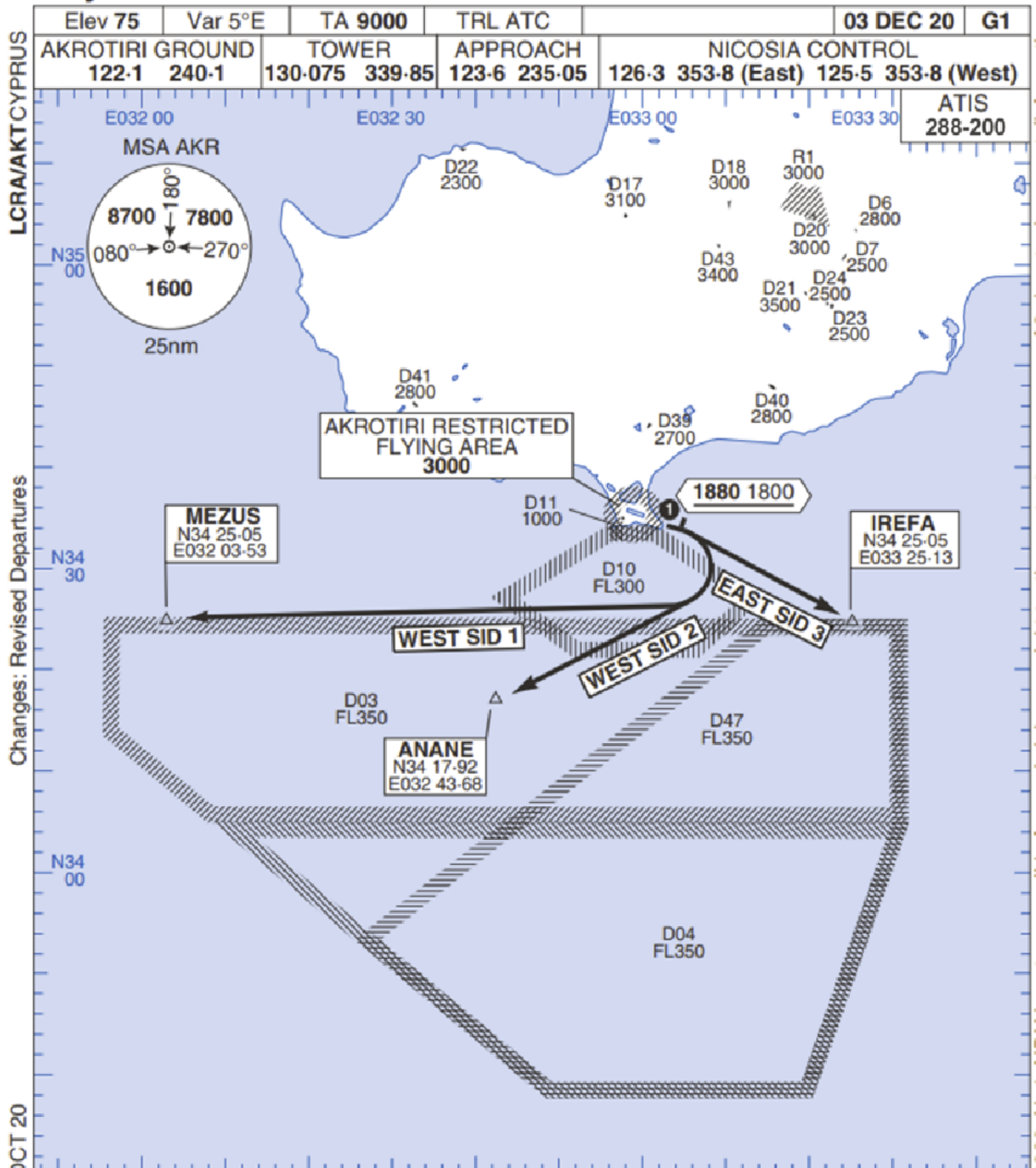
**FOR DCS  
 USE ONLY**



ATIS	AKROTIRI GND	AKROTIRI TWR	OVERLORD CONTROL	TACAN	FIELD ELEVATION
288.20 MHz	240.10   122.10	339.85   130.075	377.8	AKR 107X	<b>75 [ft] 23 [m]</b>

# Rwy 10 OMNIDIRECTIONAL DEPARTURES

# AKROTIRI



LCRA/AKTCYPRUS

Changes: Revised Departures

No1 AIDU Last Amended 06 OCT 20

© UK MOD Crown Copyright 2020. No1 AIDU is not responsible for, and claims no right to, the content or accuracy of 3rd party documents/information.

Elev 75	Var 5°E	TA 9000	TRL ATC		03 DEC 20	G1
AKROTIRI GROUND 122.1 240.1		TOWER 130.075 339.85		APPROACH 123.6 235.05		NICOSIA CONTROL 126.3 353.8 (East) 125.5 353.8 (West)
						ATIS 288-200

- 1. Minimum climb gradient 7% to 1880 1800 for obstacle and operational purposes.
- 2. No turns before DER.
- 3. Turns to north of Rwy **prohibited**.
- 4. Acft unable to locate MEZUS/ANANE/IREFA should request radar vectors from ATC.

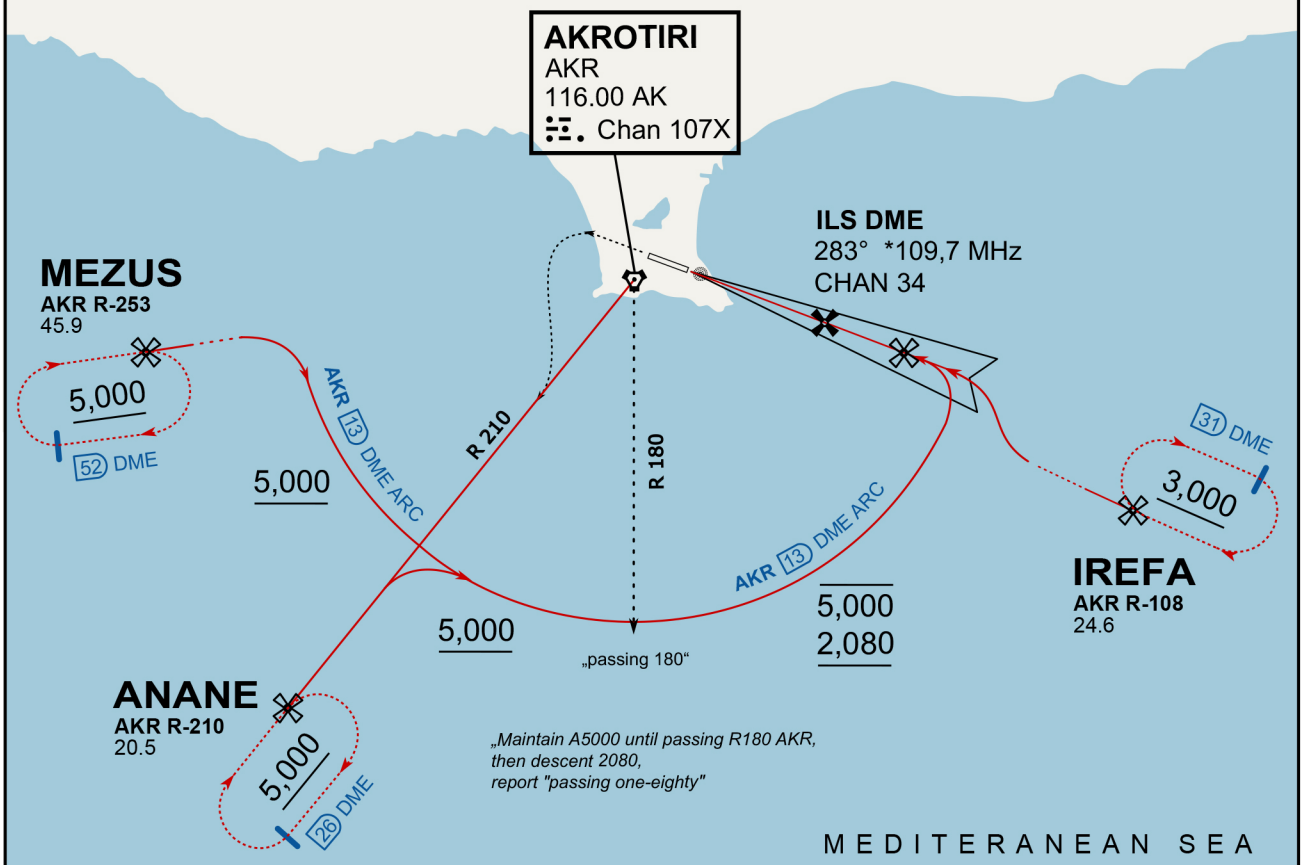
SID	RWY	ROUTEING (Including Mnm Noise Routes)
WEST SID 1	10 103°M	Ahead on Rwy Tr to 1880 1800, then right direct to MEZUS. SID terminates at 9000.
WEST SID 2		Ahead on Rwy Tr to 1880 1800, then right direct to ANANE. SID terminates at 9000.
EAST SID 3		Ahead on Rwy Tr to 1880 1800 then right direct to IREFA. SID terminates at 9000.



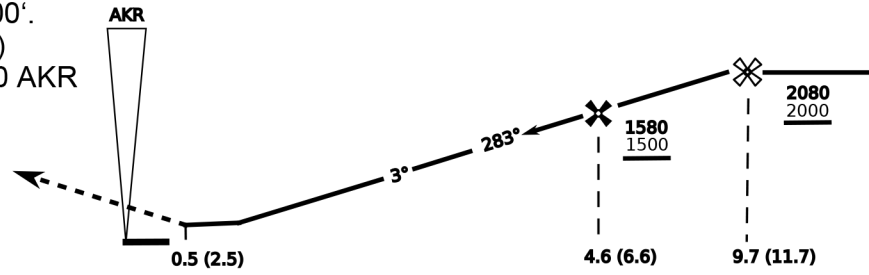
ATIS  
288.200  
AKROTIRI GROUND  
122.100  
AKROTIRI TOWER  
339.850  
APP (OVERLORD)  
377.800

NOT FOR CIVIL USE

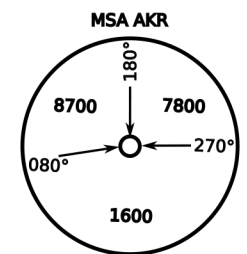
CAUTION: If unable to comply with restrictions advise ATC prior to departure.



On Track 283° climb A 4.000'.  
passing 2.080' (2.000' AAL)  
turn left and intercept R-210 AKR  
to ANANE.  
Enter ANANE Holding.



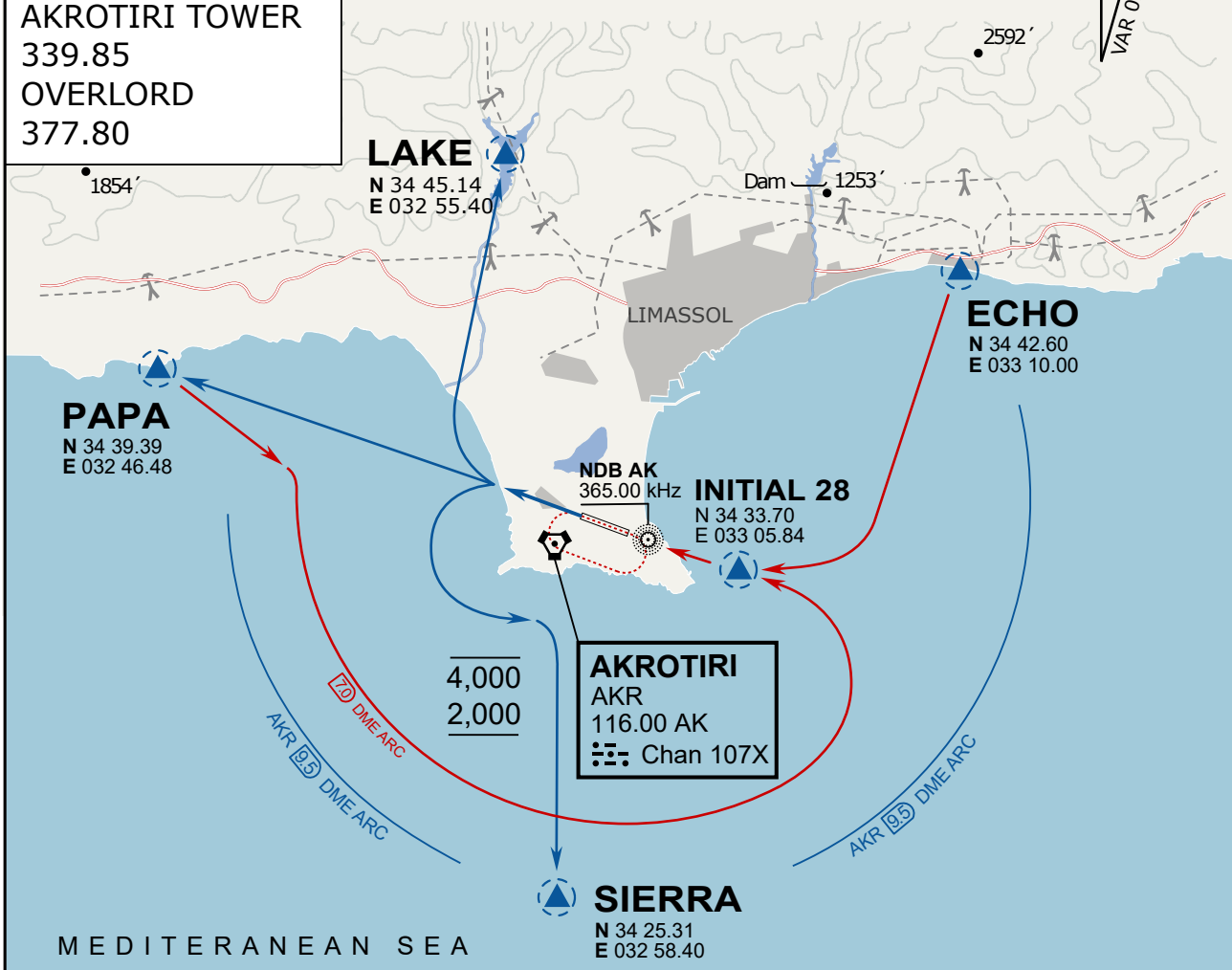
CAT	ILS/DME	LOC/DME	CIRCLE	GS (kts)				
				80	120	150	180	210
A	280 (200)	390 (320) 800m	680 (610) 1500m	FAF - MAPt (4.1NM) 3:06 2:03 1:38 1:22 1:10				
B	800m		680 (610) 1600m	RoD (fpm) 420 640 800 950 1110				
C	290 (210) 800m		780 (710) 2400m	- CIRCLING PROHIBITED N of Rwy - no AUTO coupled ILS approaches - when established on ILS contact Tower - Timing not Auth to define MAPt				
D	310 (230) 800m		780 (710) 3600m					
E	340 (260) 800m		1380 (1310) 3600m					



**ATIS**  
 288.20  
**AKROTIRI GROUND**  
 240.10  
**AKROTIRI TOWER**  
 339.85  
**OVERLORD**  
 377.80

**NOT FOR CIVIL USE**

CAUTION: If unable to comply with restrictions advise ATC prior to departure.



MEDITERRANEAN SEA

### ARR / DEP ROUTE DESCRIPTION

#### STRAIGHT-IN RWY28

Pass ENTRY at 5.000' MSL or below, pass INITIAL at 1.500' MSL or below.

#### OVERHEAD BREAK RWY28

Pass ENTRY at 5.000' MSL or below, pass INITIAL at 2.000' MSL, break to the south.

#### DEPARTURE GENERAL

Pass Departure end of runway at 1.000' or below.

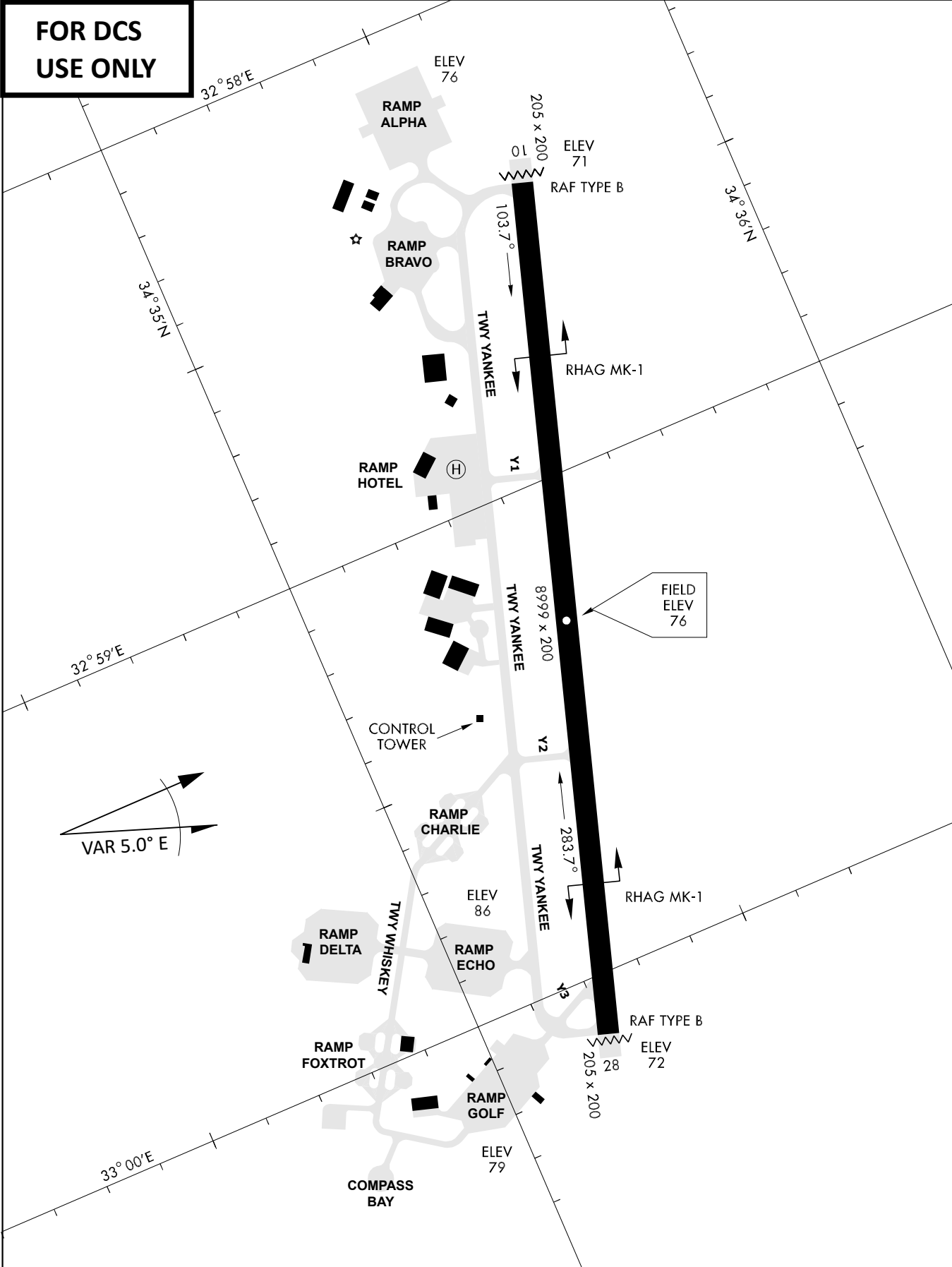
DEP RWY28 PAPA: Fly straight ahead to exit.

DEP RWY28 LAKE: Fly straight ahead until coast, than right turn direct exit.

DEP RWY28 SIERRA: Fly straight ahead until coastline, then climbing left turn, intercept AKR R-180 to exit.

DEP ECHO: no exit.

**FOR DCS  
 USE ONLY**



ATIS	AKROTIRI GND	AKROTIRI TWR	OVERLORD CONTROL	TACAN	FIELD ELEVATION
288.20 MHz	240.10   122.10	339.85   130.075	377.8	AKR 107X	<b>75 [ft] 23 [m]</b>