

MISSION DATA CARD

OPORD		Callsign		Mission		Date/Time		
2955/2024		Edelweiss 1		Training		311817MAY24		
Task	TAC/ILS Approach Training / Overhead Break Landing Training					Freq		
AO						134.25		
Departure				Recovery				
RWY28 SID				TAC 28				
#	Callsign		Pilot		IFF	TCN	LSR	NET
-1	Edelweiss 1-1		Jinx		1711	1Y	1711	
-2	Edelweiss 1-2		Newbie		1712	64Y	1712	

LOADOUT

A/A	2xA120C, 2xA9X				GUN	100% HEI-T	
A/G					CHF	120	
POD	HTS, A184, TGP				FLR	0	
TKS	2xFT300				FUEL	100%	

TOLD

	Takeoff	Target	Joker	Bingo	Land
FUEL	11169			3500	

AIRBASES

	Name	TCN	ATIS	GND	TWR	RWY	Elev	ILS
Dep	Akrotiri AFB	107X	288.2	240.1	339.85	28	62	109.7
Arr	Akrotiri AFB	107X	288.2	240.1	339.85	28	62	109.7
Div	Akrotiri AFB	107X	288.2	240.1	339.85	28	62	109.7

FLIGHTPLAN

#	Name	Navaid/Coords/DME	ALT	TOT
1	MEZUS	N34 25.109 E032 03.519	5000	
2	IREFA	N34 25.328 E033 26.664	9000	
3	PAPA	N34 39.390 E032 46.480	5000	
4	ECHO	N34 42.600 E033 10	5000	

SUPPORT**Tanker**

Callsign	TCN	Freq	ALT	TAS
ARCO 1	22Y	319.8	FL222	400
Pos	ARCO1: (N3701 E03457)			

OTHER FLIGHTS

Callsign	Mission	Airframe	Freq	TCN	Grpld	Laser
Monster 2	Training	1x A-10C	132.15	1/64	21	161X
AO		Task				

RADIO CHANNELS

#	Freq	Name
1		Flight/Squadron specific
2	288.2	Akrotiri ATIS
3	240.1	Akrotiri Ground
4	339.85	Aktrotiri Tower
5	335.05	Akrotiri Approach
6	360.1	Incirlik Tower
7	371.35	Incirlik Ground
8	377.475	Incirlik ATIS
9		No Preset
10	127.3	Paphos ATIS
11	353.8	Paphos Tower
12	304.0	CVN-73 George Washington
13	302.0	LHA-1 Tarawa
14	259.0	CV-59 Forrestal
15		No Preset
16	377.8	Overlord
17	265.0	KC-135 Texaco-1 medium/slow
18	319.8	KC-135 Arco-1
19	360.8	KC-135MPRS Arco-2
20	256.0	S-3B Recovery Tanker

RAMROD

0	1	2	3	4	5	6	7	8	9
D	E	S	T	R	O	Y	I	N	G

KTC 1400 C

	0	1	2	3	4	5	6	7	8	9
A	AEPY	UKN	SCW	VM	DR	GQL	XF	JH	OT	IB
B	LHUG	IDE	CTF	VA	NP	YOS	MJ	WB	XK	QR
C	LWPE	RTO	BQV	HN	DY	MJK	FA	GC	XI	SU
D	GMFH	UBT	ERY	JL	CD	PSW	KV	QN	AO	XI
E	SCUE	LVI	JMP	OB	WK	YRG	QX	AT	FN	HD
F	FTIV	DKW	GNJ	AQ	BL	OPS	RM	XE	UH	CY
G	FKBV	AES	LTM	CG	NQ	PXY	JD	OU	WI	RH
H	WYFJ	RTK	ENB	XG	HS	UVQ	CM	DP	AO	LI
I	MBVK	CRP	IJQ	FT	NO	YAX	UH	GS	ED	WL
J	OVHB	FYC	RPM	SL	IA	QEJ	TU	DW	GX	KN
K	HEXY	MIU	GVT	JS	OP	RNA	CQ	BF	LK	WD
L	UYVJ	MDN	EHK	FW	OX	BIS	AQ	RG	TL	PC
M	DCXU	BHE	YMV	PO	GR	SNL	JT	FI	QW	KA
N	DQXT	FJL	PES	NI	RH	BVM	WY	GA	KC	OU
O	YNXH	LFM	WCG	JD	QV	TIR	KE	AP	BO	US
P	FCXU	ERD	YVG	HT	AN	QIB	MO	WS	JK	PL
Q	UEPW	MOV	YFR	JI	BN	HLC	AX	SD	QK	TG
R	APMN	JXR	FQB	YK	SH	CTG	DI	OV	EL	UW
S	UYWJ	CVF	NOX	HQ	SB	TKM	DL	AE	PG	RI
T	VEXY	KMA	CPI	SN	LD	RQB	WF	JG	HO	TU
U	HXYP	EWQ	AFD	LN	KV	TBR	UC	MG	IJ	SO
V	NAFV	MQX	EHL	SW	RC	GJU	TO	PB	YD	IK
W	JDOS	TBA	NMW	QU	FX	VKP	EH	LI	GR	CY
X	MPFY	GCA	WTE	HR	OK	NUD	JI	VB	LQ	SX
Y	RHQB	LXU	CIN	SF	YV	DKE	OP	WT	GA	MJ

NAVAIDS

Id	Name	Channel	Position	Elevation
DAN	Incirlik	21	N37 00.950 E035 26.883	243
AKR	Akrotiri	107	N34 34.765 E032 57.769	147
PHA	Paphos	79	N34 42.997 E032 28.963	35
RMD	Ramat David	84	N32 39.892 E035 11.265	136
OS66	Kuweires Military Aviation Institute	36	N36 11.362 E037 34.226	1200

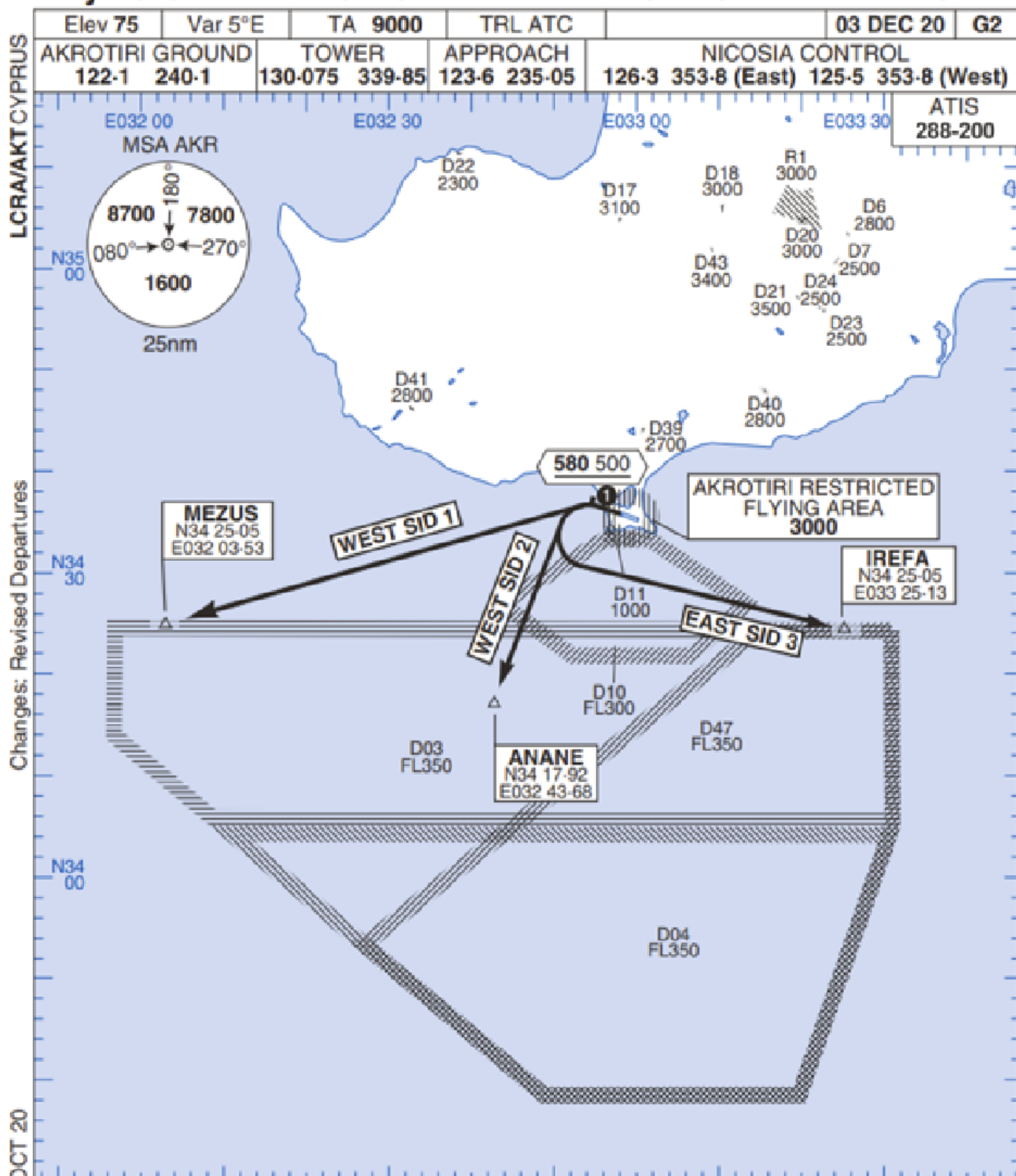
**FOR DCS
 USE ONLY**



ATIS	AKROTIRI GND	AKROTIRI TWR	OVERLORD CONTROL	TACAN	FIELD ELEVATION
288.20 MHz	240.10 122.10	339.85 130.075	377.8	AKR 107X	75 [ft] 23 [m]

Rwy 28 OMNIDIRECTIONAL DEPARTURES

AKROTIRI



Changes: Revised Departures

No1 AIDU Last Amended 06 OCT 20

© UK MOD Crown Copyright 2020. No1 AIDU is not responsible for, and claims no right to, the content or accuracy of 3rd party documents/information.

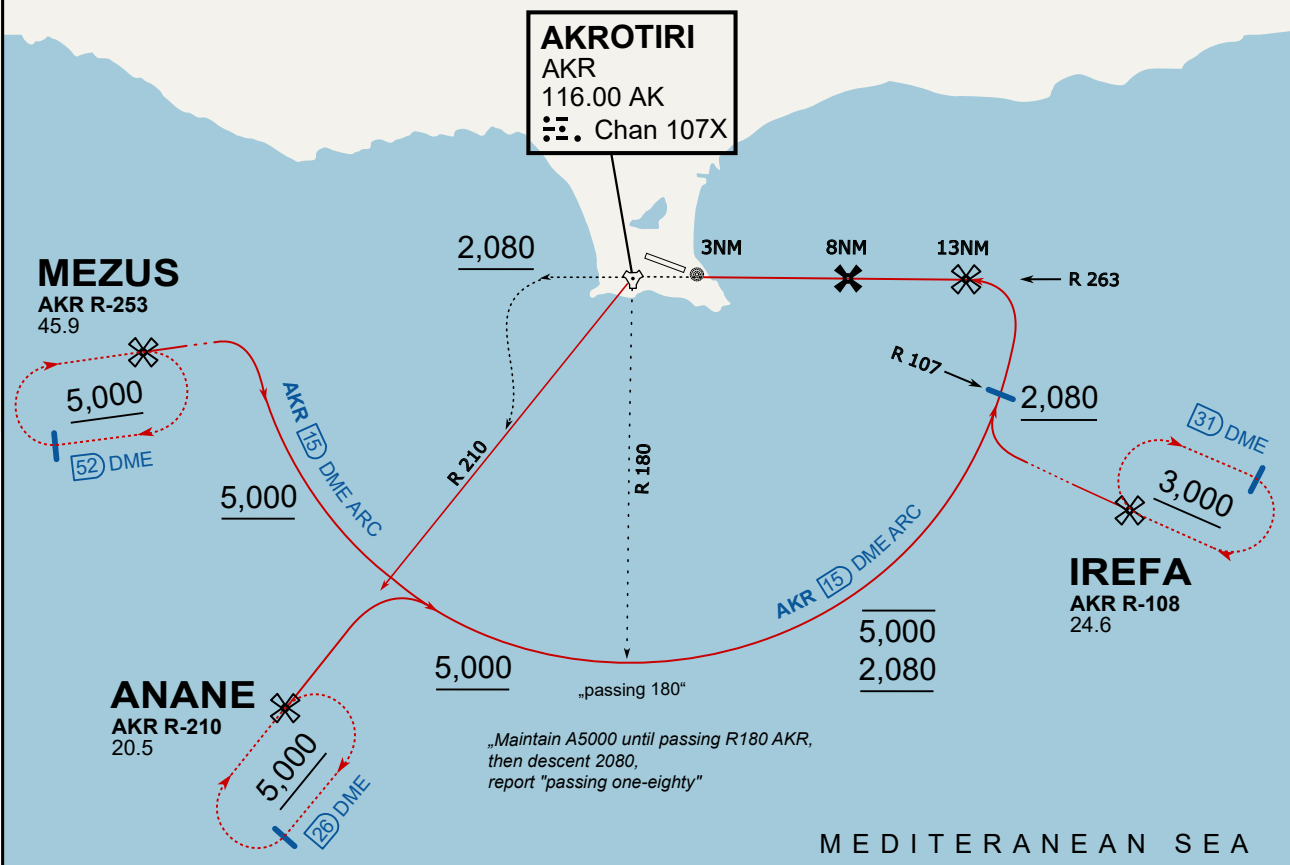
- 1. Minimum climb gradient 7% to 580 500 for obstacle and operational purposes.
- 2. No turns before DER.
- 3. Turns to north of Rwy prohibited.
- 4. Acft unable to locate MEZUS/ANANE/IREFA should request radar vectors from ATC.

SID	RWY	ROUTEING (Including Mnm Noise Routes)
WEST SID 1	28 283°M	Ahead on Rwy Tr to 580 500, turn left direct to MEZUS. SID terminates at 9000.
WEST SID 2		Ahead on Rwy Tr to 580 500, turn left direct to ANANE. SID terminates at 9000.
EAST SID 3		Ahead on Rwy Tr to 580 500, turn left direct to IREFA. SID terminates at 9000.

ATIS
 288.200
AKROTIRI GROUND
 122.100
AKROTIRI TOWER
 339.850
APP (OVERLORD)
 377.800

NOT FOR CIVIL USE

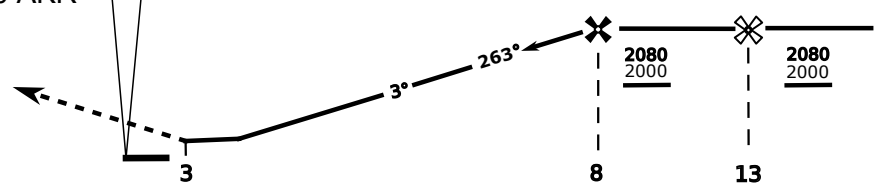
CAUTION: If unable to comply with restrictions advise ATC prior to departure.



On Track 263° climb A 4.000'.
 passing 2.080' (2.000' AAL)
 turn left and intercept R-210 AKR
 to ANANE.
 Enter ANANE Holding.

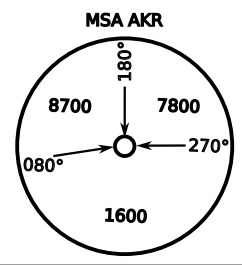


DME AKR	7	6	5	4
ALT	1780	1460	1140	820



THR Elev 74ft DME AKR

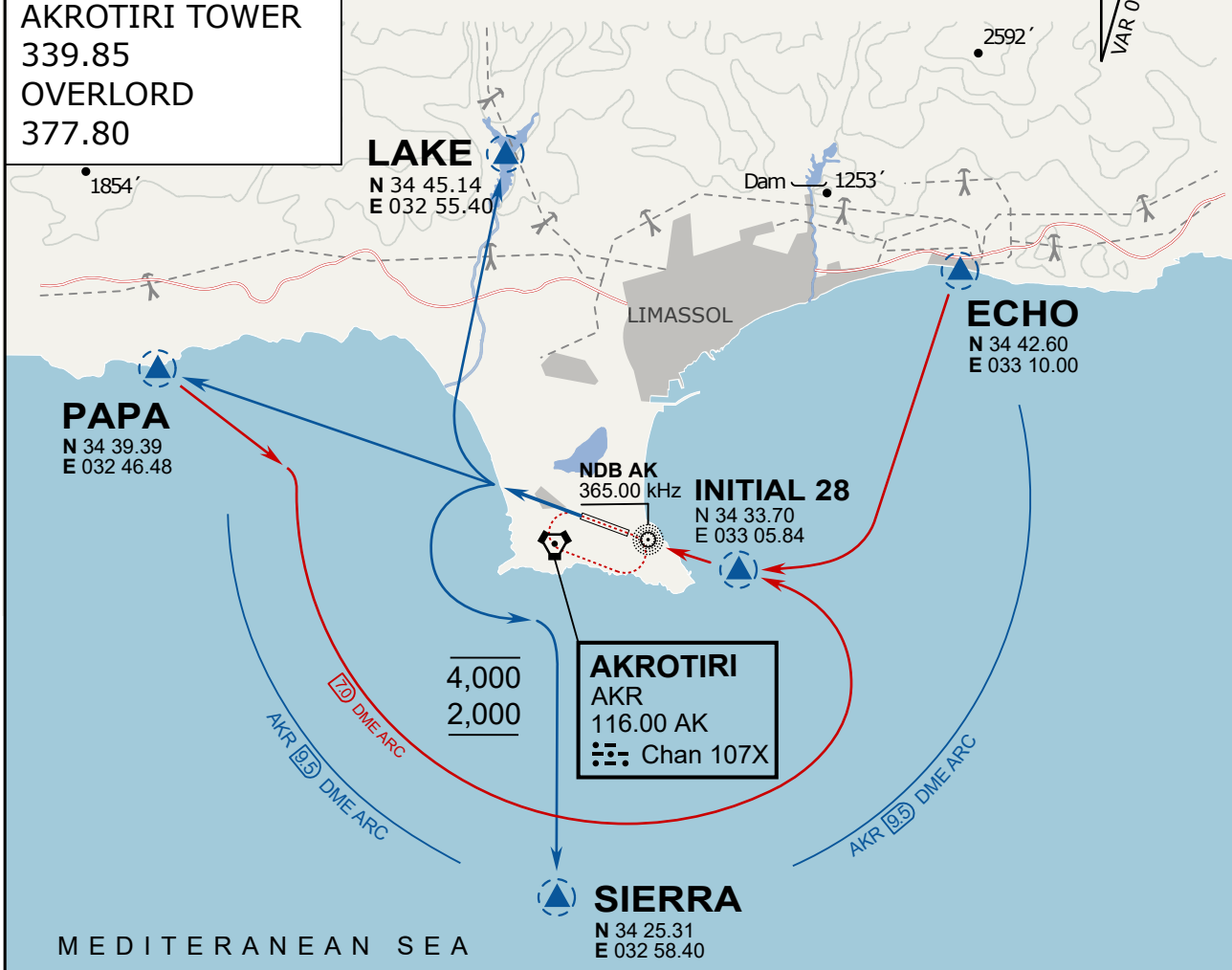
CAT	TAC	CIRCLE	GS (kts)	80	120	150	180	210
A	500(430)	680 (610) 2000m	FAF - MAPt (4.1NM)	3:06	2:03	1:38	1:22	1:10
B	1300m		RoD (fpm)	420	640	800	950	1110
C	780 (710)	780 (710) 3300m	- CIRCLING PROHIBITED N of Rwy - final track is offset 20° right of RCL and Intcp 1.1NM before THR - when established on final contact tower - Timing not Auth to define MAPt					
D	2600m	780 (710) 3600m						
E	1380 (1310) 5000m	1380 (1310) 5000m						



ATIS
 288.20
AKROTIRI GROUND
 240.10
AKROTIRI TOWER
 339.85
OVERLORD
 377.80

NOT FOR CIVIL USE

CAUTION: If unable to comply
 with restrictions advise ATC
 prior to departure.



ARR / DEP ROUTE DESCRIPTION

STRAIGHT-IN RWY28

Pass ENTRY at 5.000' MSL or below, pass INITIAL at 1.500' MSL or below.

OVERHEAD BREAK RWY28

Pass ENTRY at 5.000' MSL or below, pass INITIAL at 2.000' MSL, break to the south.

DEPARTURE GENERAL

Pass Departure end of runway at 1.000' or below.

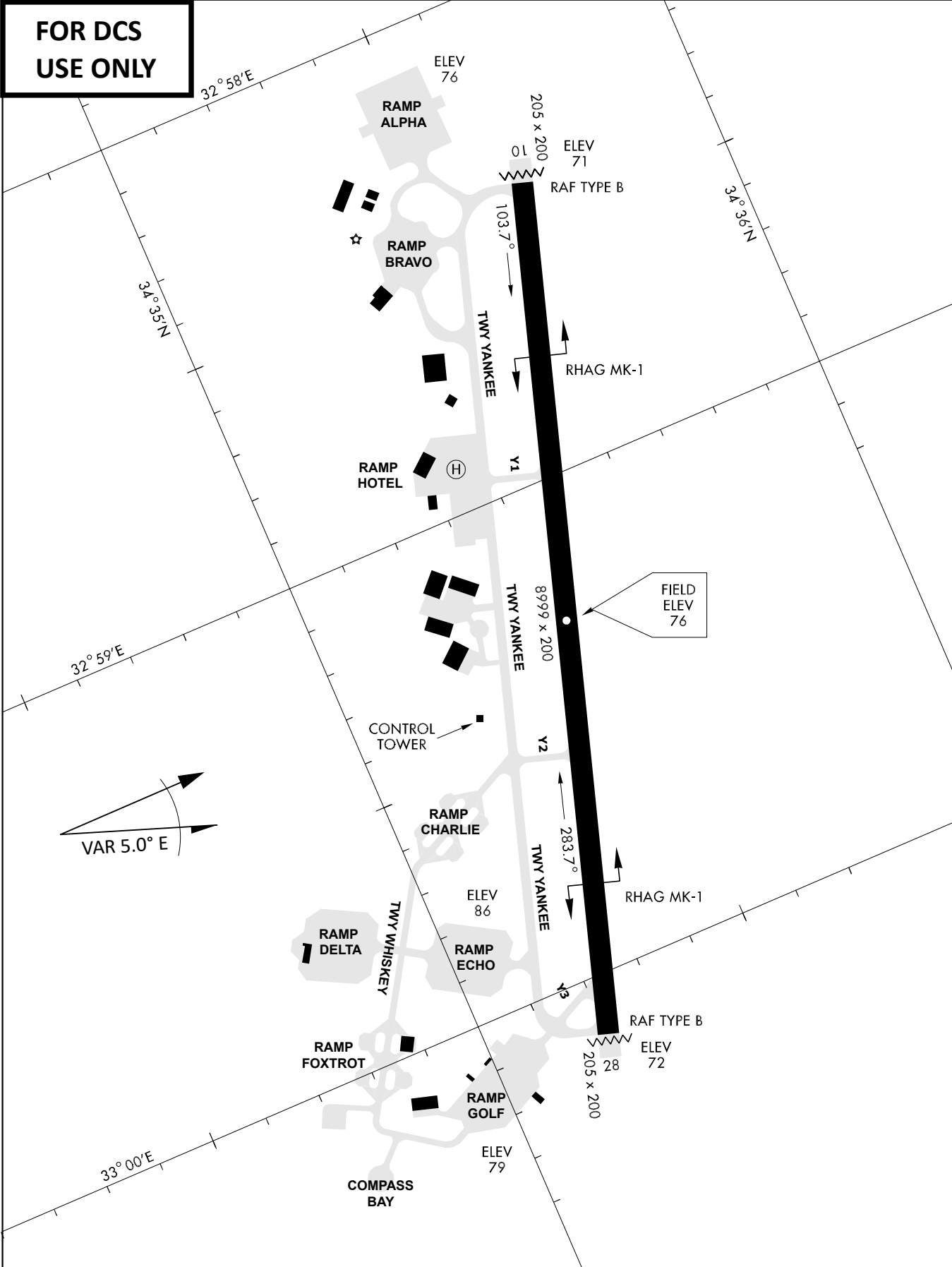
DEP RWY28 PAPA: Fly straight ahead to exit.

DEP RWY28 LAKE: Fly straight ahead until coast, than right turn direct exit.

DEP RWY28 SIERRA: Fly straight ahead until coastline, then climbing left turn, intercept AKR R-180 to exit.

DEP ECHO: no exit.

**FOR DCS
 USE ONLY**



ATIS	AKROTIRI GND	AKROTIRI TWR	OVERLORD CONTROL	TACAN	FIELD ELEVATION
288.20 MHz	240.10 122.10	339.85 130.075	377.8	AKR 107X	75 [ft] 23 [m]