

MISSION DATA CARD

OPORD		Callsign		Mission		Date/Time		
2954/2024		Tiger 1		Training		310000MAY24		
Task	Training HADB					Freq		
AO	Cape Pyla Bombing Range					261.15		
Departure				Recovery				
CAT				CASE I				
#	Callsign		Pilot		IFF	TCN	LSR	NET
-1	Tiger 1-1		Kosmoss		1011	1Y	1551	

LOADOUT

A/A	A9X, A120C, A9M				GUN	100% HEI-T	
A/G	4xM82				CHF	60	
POD	TGP				FLR	60	
TKS	FPU-8A				FUEL	100%	

TOLD

	Takeoff	Target	Joker	Bingo	Land
FUEL	13047			4500	

AIRBASES

	Name	TCN	ATIS	GND	TWR	RWY	Elev	ILS
Dep	CVN-73 USS G. Washington	55X		ICLS 12	304.0			
Arr	CVN-73 USS G. Washington	55X		ICLS 12	304.0			
Div	Akrotiri AFB	107X	288.2	240.1	339.85	28	62	109.7

FLIGHTPLAN

#	Name	Navaid/Coords/DME	ALT	TOT
1	IP	N34 50 16.209 E033 45 08.027	18000	
2	BOMBCIRCLE WEST	N34 56 55.430 E033 51 52.014	177	
3	Strafe Pit West	N34 57.085 E033 51.111	250	
4	EGRESS	N34 59 53.107 E033 46 23.320	18000	
5	CVN-73 George Washington	N33 36 48.663 E032 17 33.506	1500	

COMMS

Radio	Usage
1	#12(Mother) #16 (OL) #12 (Mother)
2	MIDS: 22/44

NOTES

Bombing Circle West

18 kft Deep Dive Bombing

Minimum Release Altitude: 5000 ft

left hand circles

RADIO CHANNELS

#	Freq	Name
1		Flight/Squadron specific
2	288.2	Akrotiri ATIS
3	240.1	Akrotiri Ground
4	339.85	Aktrotiri Tower
5	335.05	Akrotiri Approach
6	360.1	Incirlik Tower
7	371.35	Incirlik Ground
8	377.475	Incirlik ATIS
9		No Preset
10	127.3	Paphos ATIS
11	353.8	Paphos Tower
12	304.0	CVN-73 George Washington
13	302.0	LHA-1 Tarawa
14	259.0	CV-59 Forrestal
15		No Preset
16	377.8	Overlord
17	265.0	KC-135 Texaco-1 medium/slow
18	319.8	KC-135 Arco-1
19	360.8	KC-135MPRS Arco-2
20	256.0	S-3B Recovery Tanker

RAMROD

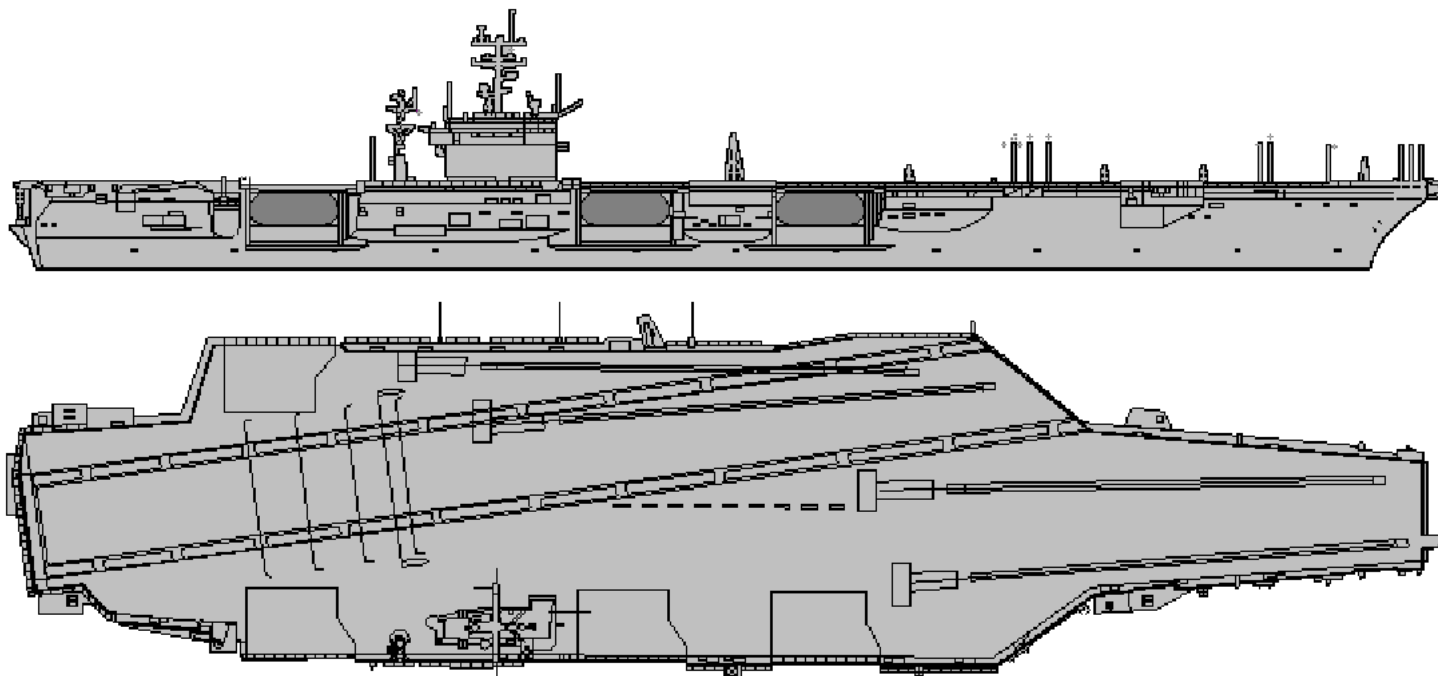
0	1	2	3	4	5	6	7	8	9
D	E	S	T	R	O	Y	I	N	G

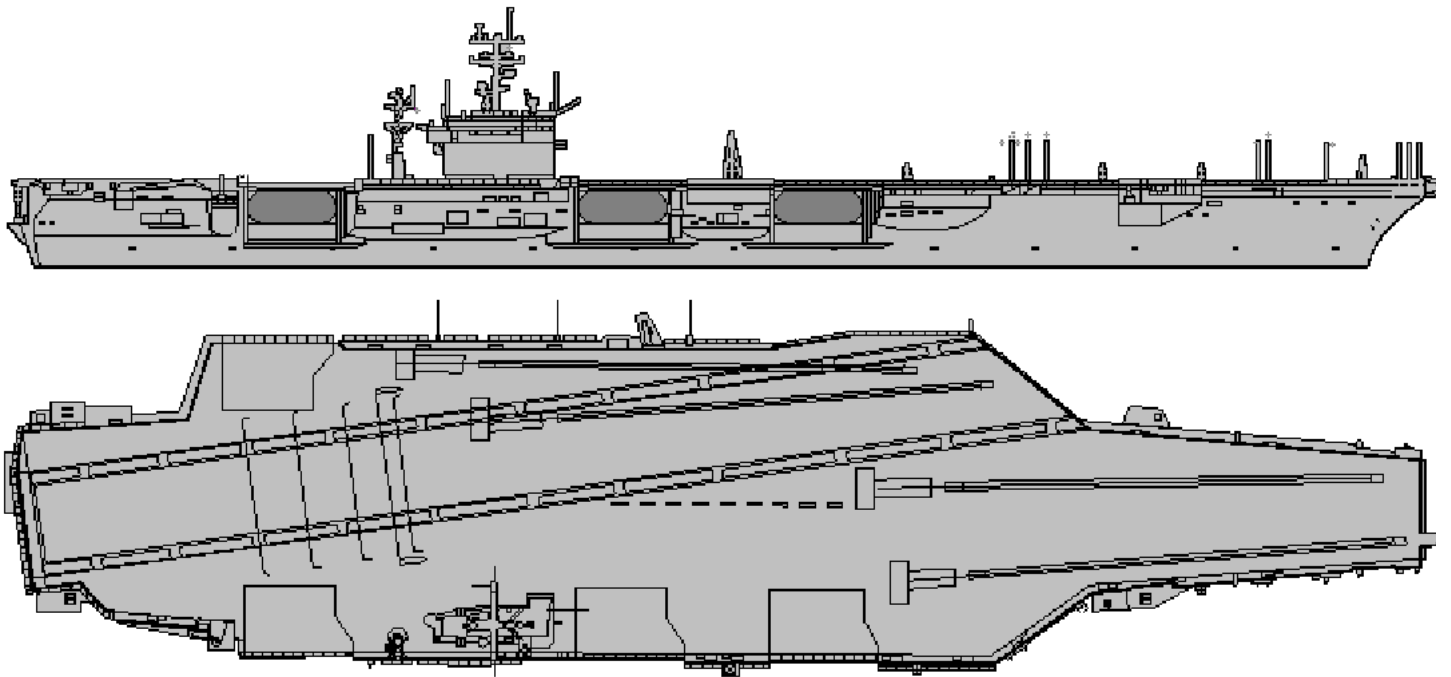
KTC 1400 C

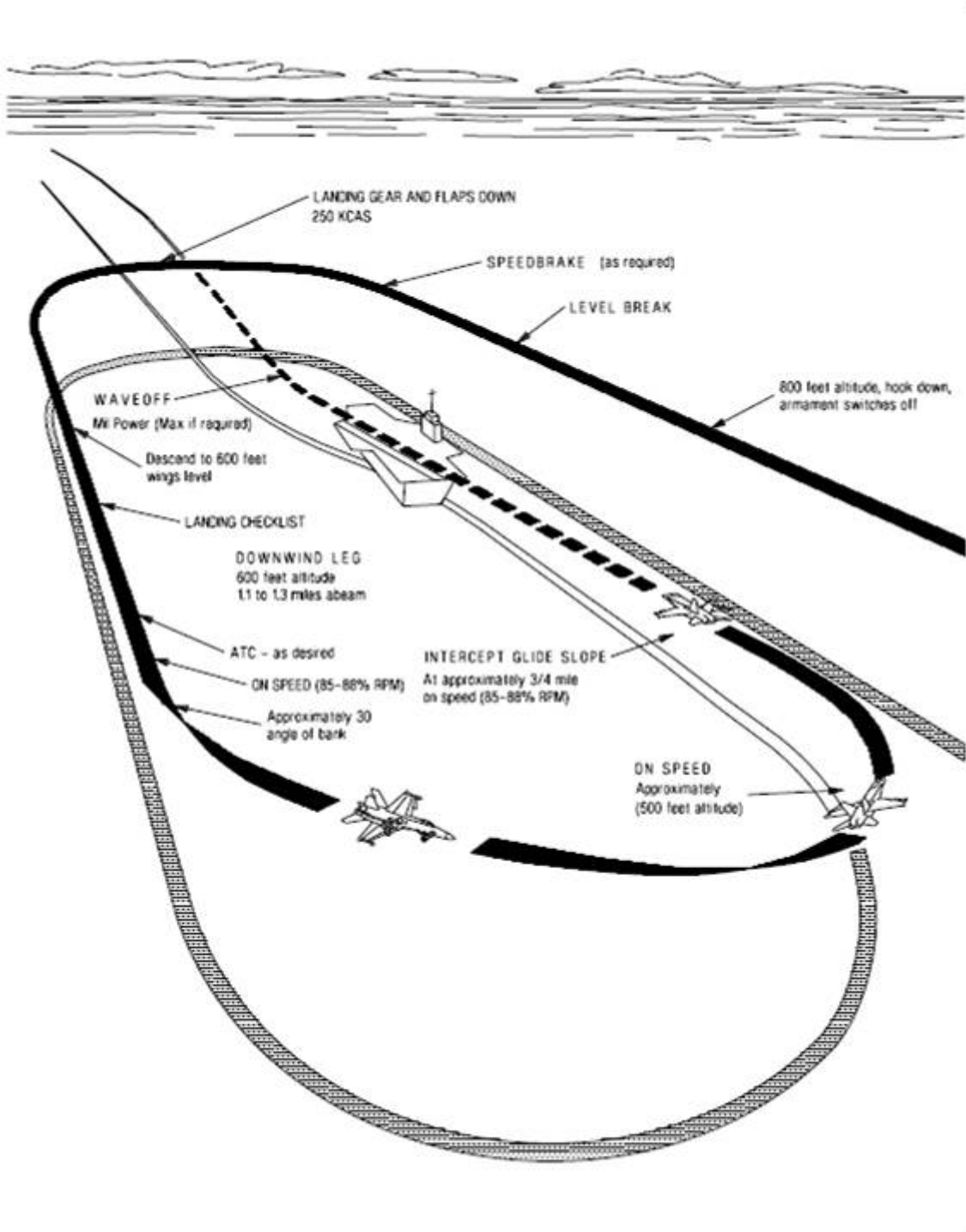
	0	1	2	3	4	5	6	7	8	9
A	AEPY	UKN	SCW	VM	DR	GQL	XF	JH	OT	IB
B	LHUG	IDE	CTF	VA	NP	YOS	MJ	WB	XK	QR
C	LWPE	RTO	BQV	HN	DY	MJK	FA	GC	XI	SU
D	GMFH	UBT	ERY	JL	CD	PSW	KV	QN	AO	XI
E	SCUE	LVI	JMP	OB	WK	YRG	QX	AT	FN	HD
F	FTIV	DKW	GNJ	AQ	BL	OPS	RM	XE	UH	CY
G	FKBV	AES	LTM	CG	NQ	PXY	JD	OU	WI	RH
H	WYFJ	RTK	ENB	XG	HS	UVQ	CM	DP	AO	LI
I	MBVK	CRP	IJQ	FT	NO	YAX	UH	GS	ED	WL
J	OVHB	FYC	RPM	SL	IA	QEJ	TU	DW	GX	KN
K	HEXY	MIU	GVT	JS	OP	RNA	CQ	BF	LK	WD
L	UYVJ	MDN	EHK	FW	OX	BIS	AQ	RG	TL	PC
M	DCXU	BHE	YMV	PO	GR	SNL	JT	FI	QW	KA
N	DQXT	FJL	PES	NI	RH	BVM	WY	GA	KC	OU
O	YNXH	LFM	WCG	JD	QV	TIR	KE	AP	BO	US
P	FCXU	ERD	YVG	HT	AN	QIB	MO	WS	JK	PL
Q	UEPW	MOV	YFR	JI	BN	HLC	AX	SD	QK	TG
R	APMN	JXR	FQB	YK	SH	CTG	DI	OV	EL	UW
S	UYWJ	CVF	NOX	HQ	SB	TKM	DL	AE	PG	RI
T	VEXY	KMA	CPI	SN	LD	RQB	WF	JG	HO	TU
U	HXYP	EWQ	AFD	LN	KV	TBR	UC	MG	IJ	SO
V	NAFV	MQX	EHL	SW	RC	GJU	TO	PB	YD	IK
W	JDOS	TBA	NMW	QU	FX	VKP	EH	LI	GR	CY
X	MPFY	GCA	WTE	HR	OK	NUD	JI	VB	LQ	SX
Y	RHQB	LXU	CIN	SF	YV	DKE	OP	WT	GA	MJ

NAVAIDS

Id	Name	Channel	Position	Elevation
DAN	Incirlik	21	N37 00.950 E035 26.883	243
AKR	Akrotiri	107	N34 34.765 E032 57.769	147
PHA	Paphos	79	N34 42.997 E032 28.963	35
RMD	Ramat David	84	N32 39.892 E035 11.265	136
OS66	Kuweires Military Aviation Institute	36	N36 11.362 E037 34.226	1200



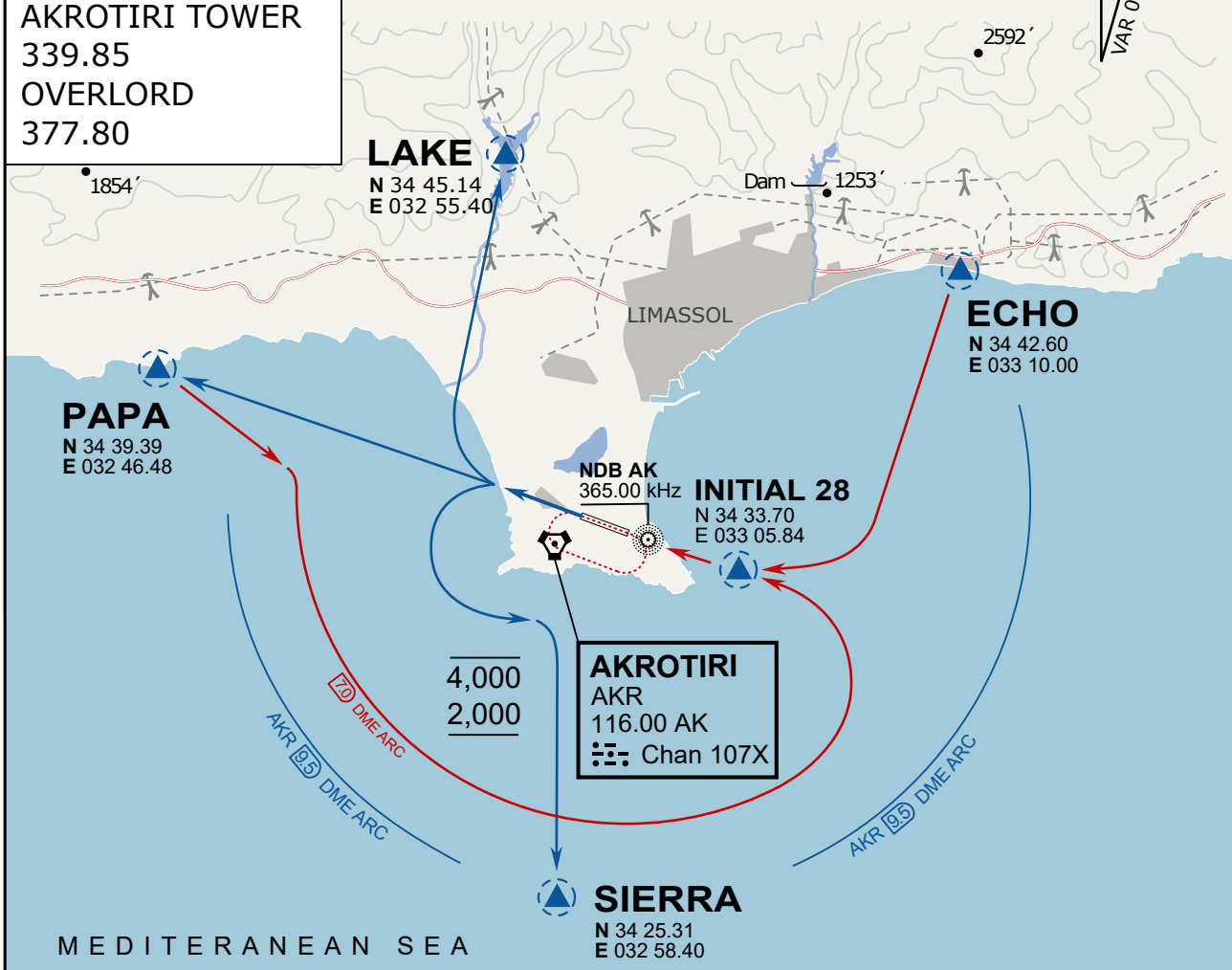




ATIS
 288.20
AKROTIRI GROUND
 240.10
AKROTIRI TOWER
 339.85
OVERLORD
 377.80

NOT FOR CIVIL USE

CAUTION: If unable to comply
 with restrictions advise ATC
 prior to departure.



ARR / DEP ROUTE DESCRIPTION

STRAIGHT-IN RWY28

Pass ENTRY at 5.000' MSL or below, pass INITIAL at 1.500' MSL or below.

OVERHEAD BREAK RWY28

Pass ENTRY at 5.000' MSL or below, pass INITIAL at 2.000' MSL, break to the south.

DEPARTURE GENERAL

Pass Departure end of runway at 1.000' or below.

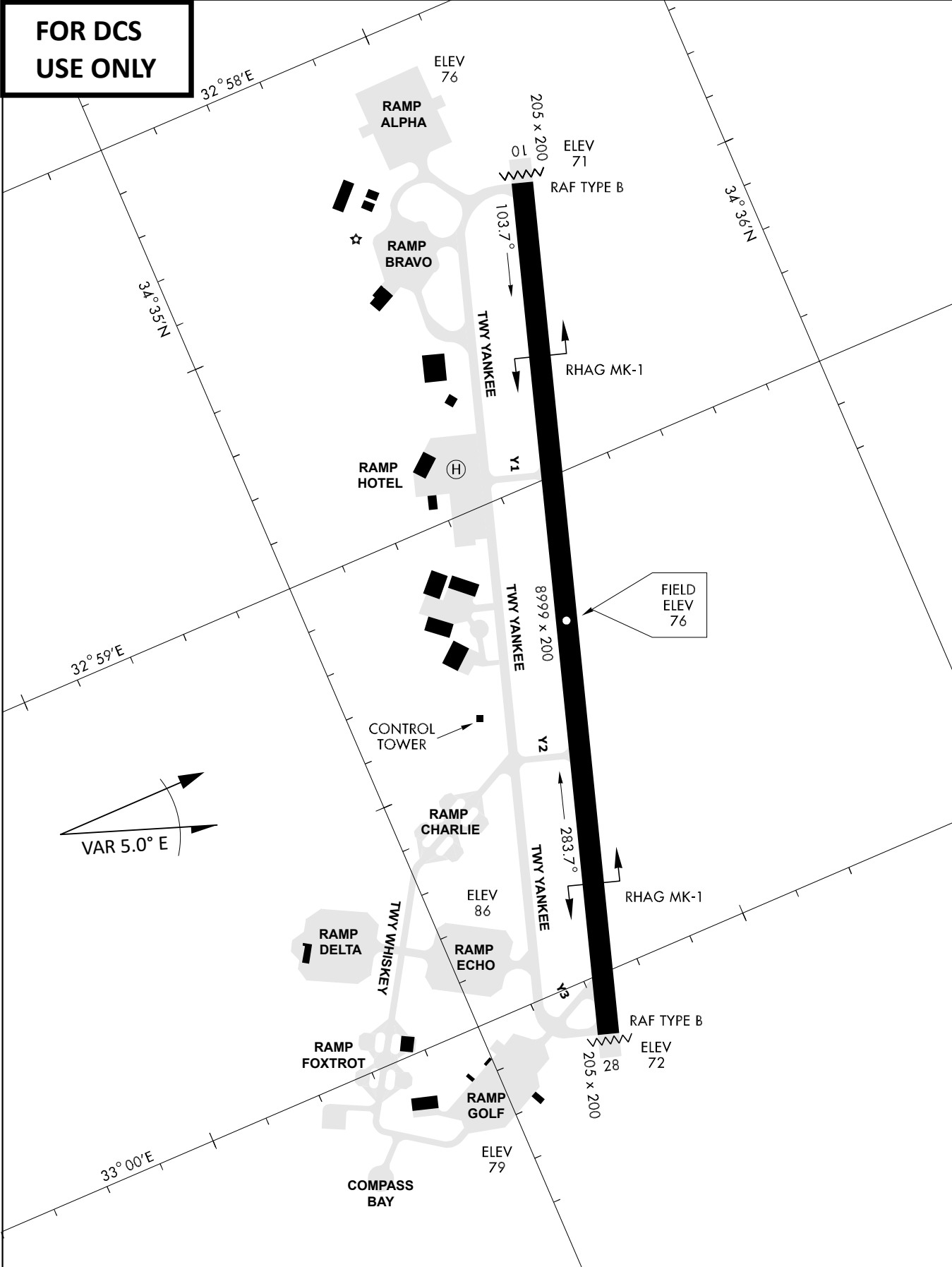
DEP RWY28 PAPA: Fly straight ahead to exit.

DEP RWY28 LAKE: Fly straight ahead until coast, than right turn direct exit.

DEP RWY28 SIERRA: Fly straight ahead until coastline, then climbing left turn, intercept AKR R-180 to exit.

DEP ECHO: no exit.

**FOR DCS
 USE ONLY**



ATIS	AKROTIRI GND	AKROTIRI TWR	OVERLORD CONTROL	TACAN	FIELD ELEVATION
288.20 MHz	240.10 122.10	339.85 130.075	377.8	AKR 107X	75 [ft] 23 [m]