

MISSION DATA CARD

OPORD		Callsign		Mission		Date/Time		
2953/2024		Raptor 1		Training		300000MAY24		
Task	Bomb Training					Freq		
AO	Bomb Range					134.0		
Departure				Recovery				
RWY28 VFR				RWY10 VFR				
#	Callsign		Pilot		IFF	TCN	LSR	NET
-1	Raptor 1-1		Newbie		1611	1Y	1621	
-2	Raptor 1-2		Jinx		1612	64Y	1622	
-3	Raptor 1-3		Woodman		1613	64X	1623	
-4	Raptor 1-4		Snowbird		1614	1X	1624	

LOADOUT

A/A	2xA120C, 2xA9X				GUN	100% HEI-T	
A/G	6xM82				CHF	120	
POD	HTS, A184, TGP				FLR	0	
TKS	2xFT300				FUEL	100%	

TOLD

	Takeoff	Target	Joker	Bingo	Land
FUEL	11169				

AIRBASES

	Name	TCN	ATIS	GND	TWR	RWY	Elev	ILS
Dep	Akrotiri AFB	107X	288.2	240.1	339.85	28	62	109.7
Arr	Akrotiri AFB	107X	288.2	240.1	339.85	28	62	109.7
Div	Paphos Internationl	79X	127.3		353.8	29	40	108.9

FLIGHTPLAN

#	Name	Navaid/Coords/DME	ALT	TOT
1	ECHO	N34 42 31.443 E033 10 00.221	5000	
2	PAPA	N34 39 43.973 E032 49 10.352	5000	
3	IP	N34 48 57.880 E033 52 07.886	20000	
4	TGT	N34 57 00.512 E033 52 09.188	100	
5	LOSOS	N34 42 35.345 E033 22 11.397	1500	
6	SIERRA	N34 24 35.912 E032 57 53.963	5000	
7	RAF Akrotiri	N34 35 26 E032 59 17	1500	

SUPPORT**Tanker**

Callsign	TCN	Freq	ALT	TAS
ARCO 1	22Y	319.8	FL222	400
Pos	ARCO1: (N3701 E03457)			

RADIO CHANNELS

#	Freq	Name
1		Flight/Squadron specific
2	288.2	Akrotiri ATIS
3	240.1	Akrotiri Ground
4	339.85	Aktrotiri Tower
5	335.05	Akrotiri Approach
6	360.1	Incirlik Tower
7	371.35	Incirlik Ground
8	377.475	Incirlik ATIS
9		No Preset
10	127.3	Paphos ATIS
11	353.8	Paphos Tower
12	304.0	CVN-73 George Washington
13	302.0	LHA-1 Tarawa
14	259.0	CV-59 Forrestal
15		No Preset
16	377.8	Overlord
17	265.0	KC-135 Texaco-1 medium/slow
18	319.8	KC-135 Arco-1
19	360.8	KC-135MPRS Arco-2
20	256.0	S-3B Recovery Tanker

RAMROD

0	1	2	3	4	5	6	7	8	9
H	O	S	P	I	T	A	B	L	E

KTC 1400 C

	0	1	2	3	4	5	6	7	8	9
A	GFBS	CKT	NDQ	HM	EI	YOV	PU	RX	WJ	LA
B	OJBC	SPH	VDT	AY	NR	LGK	XW	UF	QM	IE
C	EAOY	DLP	GUS	MQ	BW	NCI	FT	KR	XJ	HV
D	KPYA	RCL	VHB	TI	GX	FUJ	DQ	WM	OS	NE
E	QXVN	LEO	PAU	YW	HF	DIM	BG	RK	ST	CJ
F	UILM	BTY	OXK	VC	NJ	WHP	DE	SQ	GA	FR
G	TAVW	ISD	OBH	EM	CY	GPX	UR	LN	QK	JF
H	UFAL	NBC	XQV	IJ	WD	OHG	PY	SK	ER	MT
I	STVN	XMU	IOF	LW	AK	PEY	JQ	GR	CH	BD
J	RVIB	OEK	SHA	TJ	LG	MYP	NC	WD	FX	UQ
K	CERM	KJH	LOV	UB	XG	TIF	YQ	WN	DP	AS
L	TURQ	ABD	KWH	YC	SV	LXJ	ON	MG	EP	FI
M	IWON	MAL	KXV	TF	QD	RUS	HC	PJ	YB	GE
N	XRYW	ATO	CLI	NU	QG	KED	MH	FV	JS	BP
O	QDPN	OHW	BUI	RS	EC	YVF	MK	JT	AL	GX
P	XAFE	QJM	STW	CD	LY	HUN	KB	GV	RI	OP
Q	YUXO	KPJ	IHE	MG	RA	NLT	CB	QV	WS	DF
R	NYPK	FHS	BWT	XJ	GU	IQA	RC	VM	EO	DL
S	EIGC	PRK	LTS	UF	JY	AMV	QX	DW	BH	ON
T	XVWQ	KJS	CRO	ML	HG	TFU	AI	YB	NE	DP
U	BQYW	VKE	OUP	LG	TA	XJI	MF	CN	SD	HR
V	OBJF	HPS	GUM	YQ	NC	AXK	VI	LE	WD	RT
W	FRGC	VEY	DUT	BQ	JK	SNP	HA	OW	XM	IL
X	BDCP	RKM	TFS	JU	HE	QAX	NO	VL	GI	WY
Y	VMFO	RPN	XCH	JG	AB	WIT	YE	DQ	KL	US

NAVAIDS

Id	Name	Channel	Position	Elevation
DAN	Incirlik	21	N37 00.950 E035 26.883	243
AKR	Akrotiri	107	N34 34.765 E032 57.769	147
PHA	Paphos	79	N34 42.997 E032 28.963	35
RMD	Ramat David	84	N32 39.892 E035 11.265	136
OS66	Kuweires Military Aviation Institute	36	N36 11.362 E037 34.226	1200

**FOR DCS
 USE ONLY**



ATIS	AKROTIRI GND	AKROTIRI TWR	OVERLORD CONTROL	TACAN	FIELD ELEVATION
288.20 MHz	240.10 122.10	339.85 130.075	377.8	AKR 107X	75 [ft] 23 [m]

ATIS
 288.20
 AKROTIRI GROUND
 240.10
 AKROTIRI TOWER
 339.85
 OVERLORD
 377.80

NOT FOR CIVIL USE

CAUTION: If unable to comply with restrictions advise ATC prior to departure.



ARR / DEP ROUTE DESCRIPTION

STRAIGHT-IN RWY28

Pass ENTRY at 5.000' MSL or below, pass INITIAL at 1.500' MSL or below.

OVERHEAD BREAK RWY28

Pass ENTRY at 5.000' MSL or below, pass INITIAL at 2.000' MSL, break to the south.

DEPARTURE GENERAL

Pass Departure end of runway at 1.000' or below.

DEP RWY28 PAPA: Fly straight ahead to exit.

DEP RWY28 LAKE: Fly straight ahead until coast, than right turn direct exit.

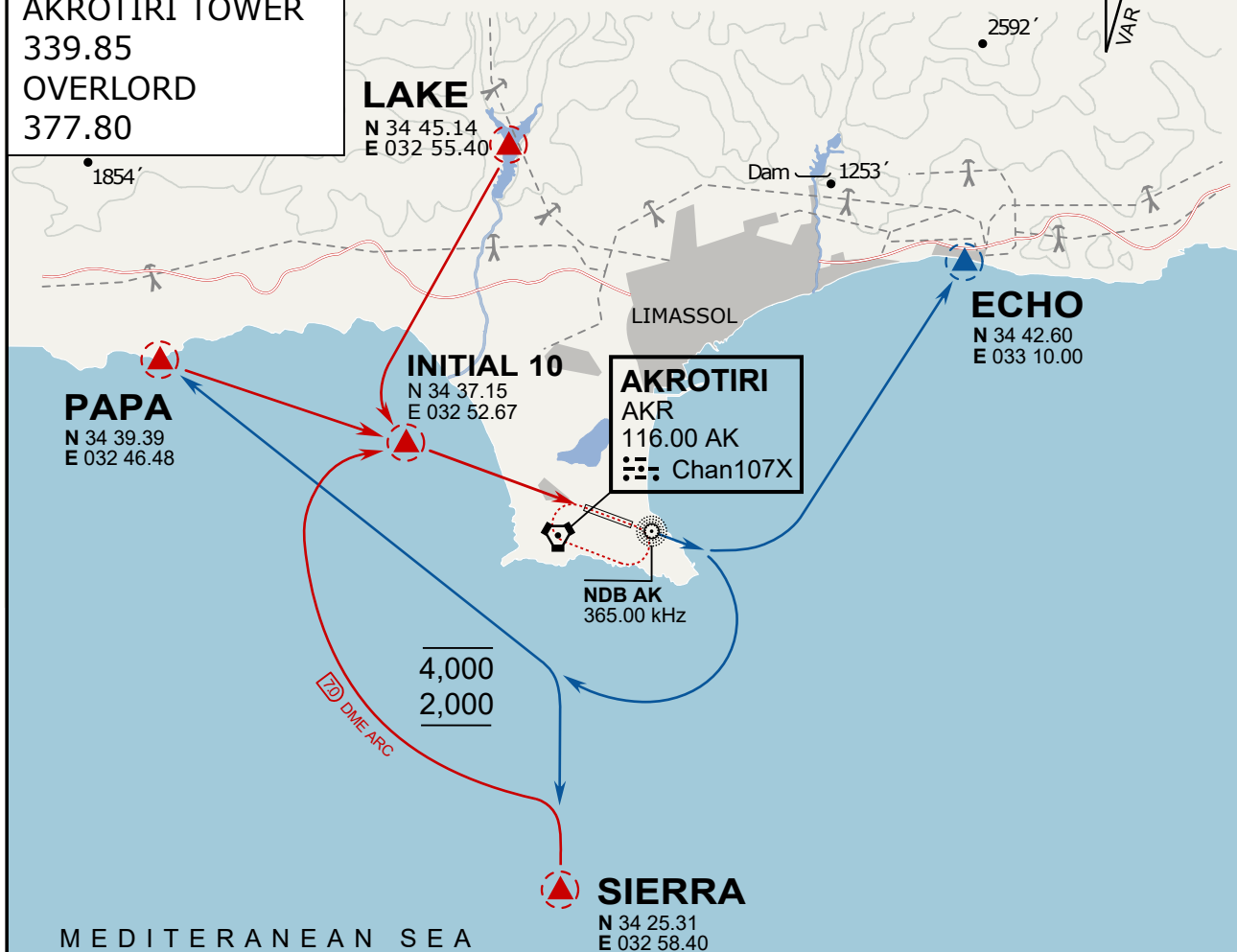
DEP RWY28 SIERRA: Fly straight ahead until coastline, then climbing left turn, intercept AKR R-180 to exit.

DEP ECHO: no exit.

ATIS
288.20
AKROTIRI GROUND
240.10
AKROTIRI TOWER
339.85
OVERLORD
377.80

NOT FOR CIVIL USE

CAUTION: If unable to comply with restrictions advise ATC prior to departure.



ARR / DEP ROUTE DESCRIPTION

ARRIVAL GENERAL

Pass Entry at 5.000' or below. Overhead Brake RWY 10: pass INITIAL 10 at 2.000' MSL.
Straight-in RWY 10 : pass INITIAL 1.500' or below.

ARR RWY10 PAPA / LAKE: Direct initial.

ARR RWY10 SIERRA: Intercept ARC 7 of AKR to INITIAL 10.

ARR ECHO: no ENTRY.

DEPARTURE GENERAL

Pass Departure end of runway at 1.000' AGL or below. Keep RWY heading until coastline.

DEP RWY10 ECHO: Direct EXIT.

DEP RWY10 SIERRA: Climbing right turn, intercept R180 AKR to Sierra.

DEP RWY10 PAPA: Climbing right turn until R180 AKR, then direct Papa

DEP LAKE: no EXIT.

NOT AVAILABLE

NOT AVAILABLE