

**MISSION DATA CARD**

OPORD	Callsign	Mission	Date/Time			
2948/2024	Claw 2	Training	290800MAY24			
Task						Freq
AO						264.05
Departure			Recovery			
RWY10 SID			none			
#	Callsign	Pilot	IFF	TCN	LSR	NET
-1	Claw 2-1	Laud	4521	1Y	1701	
-2	Claw 2-2	Warblade	4522	64Y	1702	

**LOADOUT**

A/A				GUN	100% HEDP
A/G	2xM229 - HE MPP, 8xAGM114K			CHF	30
POD				FLR	60
TKS				FUEL	50%

**TOLD**

	Takeoff	Target	Joker	Bingo	Land
FUEL	1256				

**AIRBASES**

	Name	TCN	ATIS	GND	TWR	RWY	Elev	ILS
Dep	Akrotiri AFB	107X	288.2	240.1	339.85	28	62	109.7
Arr	Lakatamia Helicopter Airbase				251.95	35	757	

**FLIGHTPLAN**

#	Name	Navaid/Coords/DME	ALT	TOT
1	LAKE	N34 45.150 E032 55.400	0	
2	ITR.T1	N34 47.318 E032 58.622	0	

**SUPPORT****AWACS**

Callsign

Freq

ALT

Pos

OVERLORD2

377.8

FL320

N3713 E03643 - N3714 E03749

**RADIO CHANNELS**

#	Freq	Name
1		Flight/Squadron specific
2	288.2	Akrotiri ATIS
3	240.1	Akrotiri Ground
4	339.85	Aktrotiri Tower
5	335.05	Akrotiri Approach
6	360.1	Incirlik Tower
7	371.35	Incirlik Ground
8	377.475	Incirlik ATIS
9		No Preset
10	127.3	Paphos ATIS
11	353.8	Paphos Tower
12	304.0	CVN-73 George Washington
13	302.0	LHA-1 Tarawa
14	259.0	CV-59 Forrestal
15		No Preset
16	377.8	Overlord
17	265.0	KC-135 Texaco-1 medium/slow
18	319.8	KC-135 Arco-1
19	360.8	KC-135MPRS Arco-2
20	256.0	S-3B Recovery Tanker

**RAMROD**

0	1	2	3	4	5	6	7	8	9
C	L	U	S	T	E	R	I	N	G

**KTC 1400 C**

	0	1	2	3	4	5	6	7	8	9
A	QNPH	CWV	LIM	TF	AK	UGS	XE	BO	DJ	RY
B	KOAG	FIM	QNJ	XY	WB	URL	TH	DV	CP	SE
C	LRNF	HCU	MVD	WK	PI	BTA	JS	QG	XE	OY
D	DBTP	QMO	VUH	NW	YR	ICS	FG	AE	LK	XJ
E	AMPJ	CID	TGV	NU	RH	QBK	SF	WL	XO	YE
F	KIGX	FDL	UER	SV	WA	OPB	JM	CT	YH	NQ
G	SVYC	GTK	FUJ	MD	AW	XIR	QP	EN	BO	HL
H	AWFG	QDJ	ULB	CV	OR	NPT	EK	IX	SH	YM
I	UCHE	JLI	KGD	QA	YS	PNT	XO	MR	VW	BF
J	OSFU	VYP	JNM	GW	DB	AEX	KT	CR	QH	IL
K	SDUI	CLR	VAO	KJ	NY	QMX	PE	TW	HB	GF
L	UKYQ	OCA	RJW	VL	HT	MBP	NF	SE	XG	ID
M	LKGB	EHJ	CYF	MA	QV	WDX	TU	SP	NO	JR
N	SLHE	MNU	XTY	KG	QO	IVB	DJ	AP	RC	FW
O	JHIM	BAR	VOW	TX	NG	FQK	YS	DE	LP	UC
P	LUGR	ACX	KPI	VD	FH	TEO	QW	JS	MB	YN
Q	XMVL	EDO	QPC	GY	IK	ASH	NJ	RW	UB	TF
R	RXQH	VCD	JAN	TM	SI	FWE	UY	LB	PG	KO
S	NWTG	YJK	MBS	RE	XU	IPC	DV	QO	AH	LF
T	PGTE	CRL	VSI	FM	XU	AWB	JO	KD	NH	QY
U	OBRY	XHU	GSV	CI	PD	TML	WE	KQ	JN	FA
V	EMNL	URW	KOD	HT	BF	VXI	GA	QY	CS	PJ
W	SRAG	XDL	IWO	QC	JV	KFM	YB	HT	UP	NE
X	QGHV	TSC	NWI	YK	ML	PDX	JA	EU	OB	FR
Y	EUVF	ITP	JOA	HM	CR	XLG	DN	BK	QY	WS

**NAVAIDS**

<b>Id</b>	<b>Name</b>	<b>Channel</b>	<b>Position</b>	<b>Elevation</b>
DAN	Incirlik	21	N37 00.950 E035 26.883	243
AKR	Akrotiri	107	N34 34.765 E032 57.769	147
PHA	Paphos	79	N34 42.997 E032 28.963	35
RMD	Ramat David	84	N32 39.892 E035 11.265	136
OS66	Kuweires Military Aviation Institute	36	N36 11.362 E037 34.226	1200

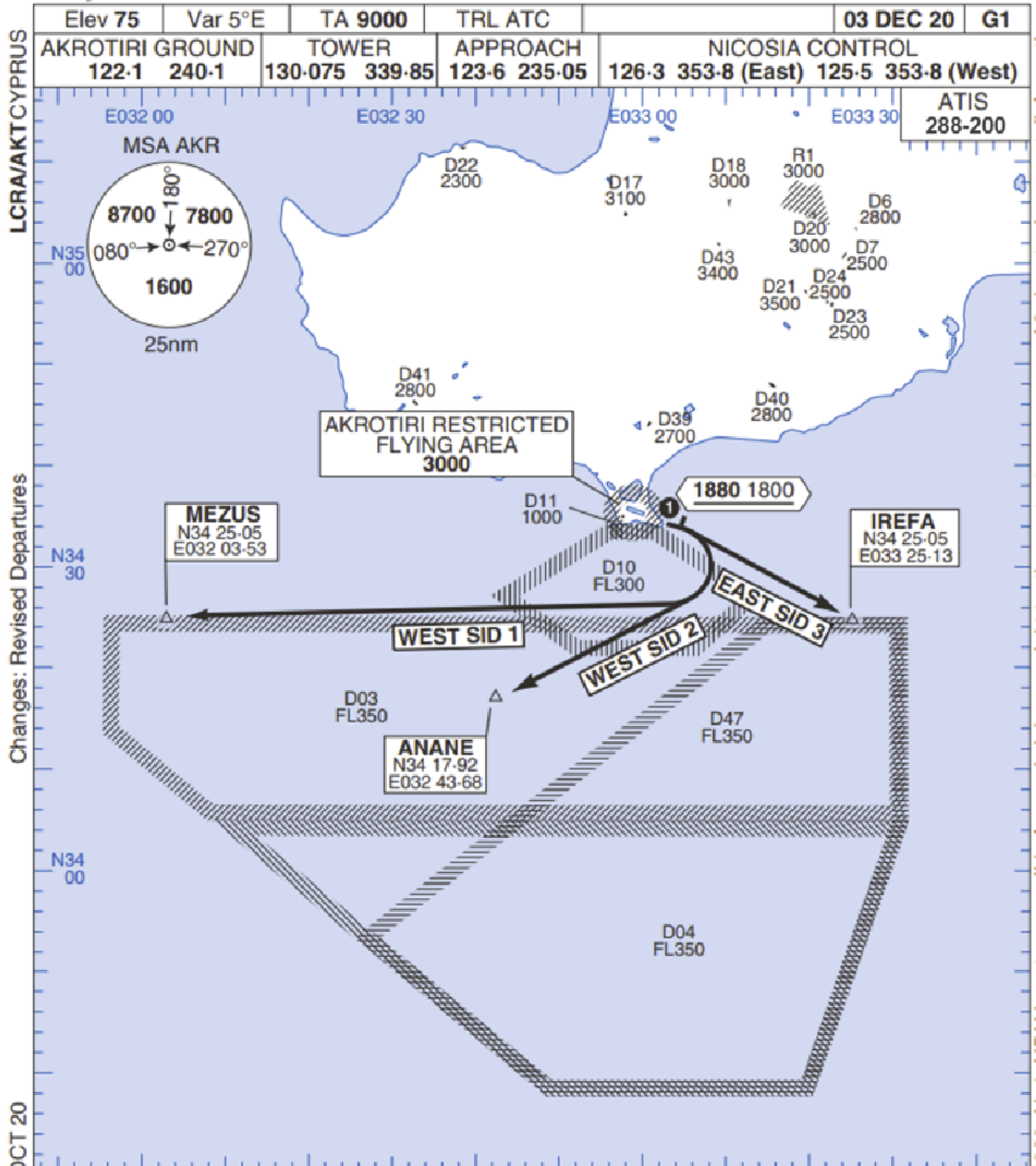
**FOR DCS  
 USE ONLY**



ATIS	AKROTIRI GND	AKROTIRI TWR	OVERLORD CONTROL	TACAN	FIELD ELEVATION
288.20 MHz	240.10   122.10	339.85   130.075	377.8	AKR 107X	<b>75 [ft] 23 [m]</b>

# Rwy 10 OMNIDIRECTIONAL DEPARTURES

# AKROTIRI



LCRA/AKTCYPRUS

Changes: Revised Departures

No1 AIDU Last Amended 06 OCT 20

© UK MOD Crown Copyright 2020. No1 AIDU is not responsible for, and claims no right to, the content or accuracy of 3rd party documents/information.

Elev 75	Var 5°E	TA 9000	TRL ATC		03 DEC 20	G1	
AKROTIRI GROUND 122-1 240-1		TOWER 130-075 339-85		APPROACH 123-6 235-05		NICOSIA CONTROL 126-3 353-8 (East) 125-5 353-8 (West)	
							ATIS 288-200

- 1. Minimum climb gradient 7% to 1880 1800 for obstacle and operational purposes.
- 2. No turns before DER.
- 3. Turns to north of Rwy **prohibited**.
- 4. Acft unable to locate MEZUS/ANANE/IREFA should request radar vectors from ATC.

SID	RWY	ROUTEING (Including Mnm Noise Routes)
WEST SID 1	10 103°M	Ahead on Rwy Tr to 1880 1800, then right direct to MEZUS. SID terminates at 9000.
WEST SID 2		Ahead on Rwy Tr to 1880 1800, then right direct to ANANE. SID terminates at 9000.
EAST SID 3		Ahead on Rwy Tr to 1880 1800 then right direct to IREFA. SID terminates at 9000.



**NOT AVAILABLE**

**NOT AVAILABLE**