

MISSION DATA CARD

OPORD		Callsign		Mission		Date/Time		
2947/2024		Tiger 1		Training		290000MAY24		
Task	Training HADB					Freq		
AO	Cape Pyla Bombing Range					261.15		
Departure				Recovery				
CAT				CASE I				
#	Callsign		Pilot		IFF	TCN	LSR	NET
-1	Tiger 1-1		Kosmoss		1011	1Y	1551	

LOADOUT

A/A	A9X, A120C, A9M				GUN	100% HEI-T	
A/G	4xM82				CHF	60	
POD	TGP				FLR	60	
TKS	FPU-8A				FUEL	100%	

TOLD

	Takeoff	Target	Joker	Bingo	Land
FUEL	13047				

AIRBASES

	Name	TCN	ATIS	GND	TWR	RWY	Elev	ILS
Dep	CVN-73 USS G. Washington	55X		ICLS 12	304.0			
Arr	CVN-73 USS G. Washington	55X		ICLS 12	304.0			
Div	Akrotiri AFB	107X	288.2	240.1	339.85	28	62	109.7

FLIGHTPLAN

#	Name	Navaid/Coords/DME	ALT	TOT
1	IP	N34 50 16.209 E033 45 08.027	18000	
2	BOMBCIRCLE WEST	N34 56 55.430 E033 51 52.014	177	
3	Strafe Pit West	N34 57.085 E033 51.111	250	
4	EGRESS	N34 59 53.107 E033 46 23.320	18000	
5	CVN-73 George Washington	N33 36 48.663 E032 17 33.506	1500	

COMMS

Radio	Usage
1	#12(Mother) #16 (OL) #12 (Mother)
2	MIDS: 22/44

NOTES

Bombing Circle West

18 kft Deep Dive Bombing

Minimum Release Altitude: 5000 ft

left hand circles

RADIO CHANNELS

#	Freq	Name
1		Flight/Squadron specific
2	288.2	Akrotiri ATIS
3	240.1	Akrotiri Ground
4	339.85	Aktrotiri Tower
5	335.05	Akrotiri Approach
6	360.1	Incirlik Tower
7	371.35	Incirlik Ground
8	377.475	Incirlik ATIS
9		No Preset
10	127.3	Paphos ATIS
11	353.8	Paphos Tower
12	304.0	CVN-73 George Washington
13	302.0	LHA-1 Tarawa
14	259.0	CV-59 Forrestal
15		No Preset
16	377.8	Overlord
17	265.0	KC-135 Texaco-1 medium/slow
18	319.8	KC-135 Arco-1
19	360.8	KC-135MPRS Arco-2
20	256.0	S-3B Recovery Tanker

RAMROD

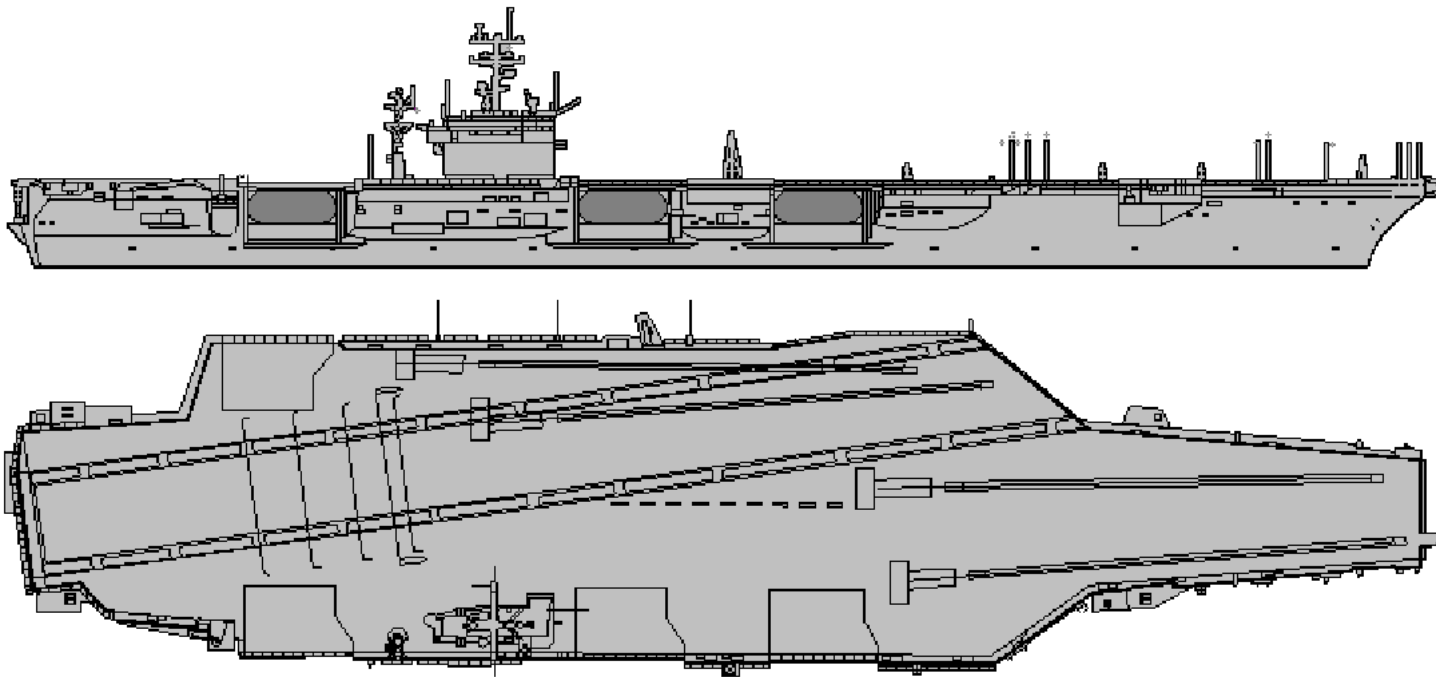
0	1	2	3	4	5	6	7	8	9
C	L	U	S	T	E	R	I	N	G

KTC 1400 C

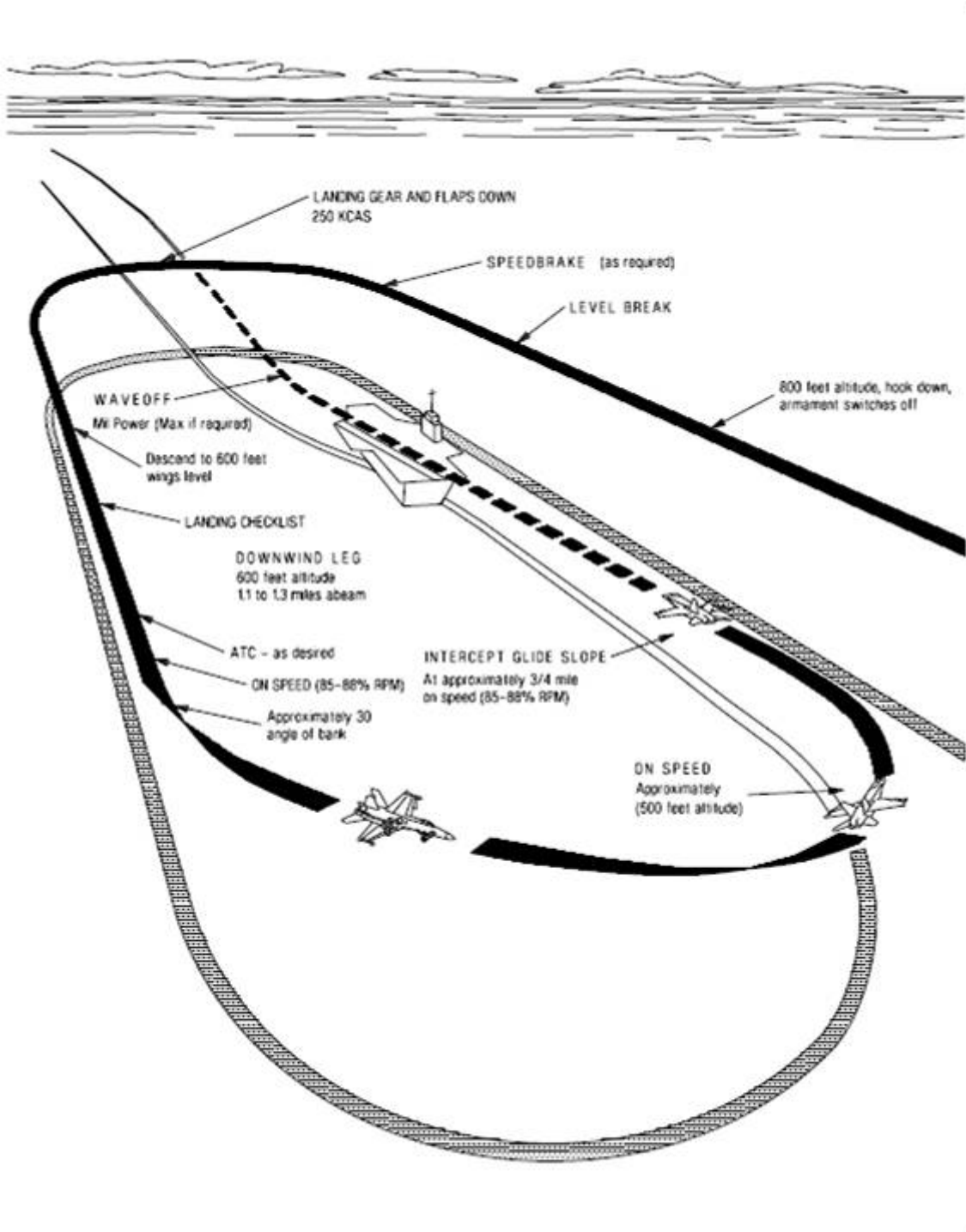
	0	1	2	3	4	5	6	7	8	9
A	QNPH	CWV	LIM	TF	AK	UGS	XE	BO	DJ	RY
B	KOAG	FIM	QNJ	XY	WB	URL	TH	DV	CP	SE
C	LRNF	HCU	MVD	WK	PI	BTA	JS	QG	XE	OY
D	DBTP	QMO	VUH	NW	YR	ICS	FG	AE	LK	XJ
E	AMPJ	CID	TGV	NU	RH	QBK	SF	WL	XO	YE
F	KIGX	FDL	UER	SV	WA	OPB	JM	CT	YH	NQ
G	SVYC	GTK	FUJ	MD	AW	XIR	QP	EN	BO	HL
H	AWFG	QDJ	ULB	CV	OR	NPT	EK	IX	SH	YM
I	UCHE	JLI	KGD	QA	YS	PNT	XO	MR	VW	BF
J	OSFU	VYP	JNM	GW	DB	AEX	KT	CR	QH	IL
K	SDUI	CLR	VAO	KJ	NY	QMX	PE	TW	HB	GF
L	UKYQ	OCA	RJW	VL	HT	MBP	NF	SE	XG	ID
M	LKGB	EHJ	CYF	MA	QV	WDX	TU	SP	NO	JR
N	SLHE	MNU	XTY	KG	QO	IVB	DJ	AP	RC	FW
O	JHIM	BAR	VOW	TX	NG	FQK	YS	DE	LP	UC
P	LUGR	ACX	KPI	VD	FH	TEO	QW	JS	MB	YN
Q	XMVL	EDO	QPC	GY	IK	ASH	NJ	RW	UB	TF
R	RXQH	VCD	JAN	TM	SI	FWE	UY	LB	PG	KO
S	NWTG	YJK	MBS	RE	XU	IPC	DV	QO	AH	LF
T	PGTE	CRL	VSI	FM	XU	AWB	JO	KD	NH	QY
U	OBRY	XHU	GSV	CI	PD	TML	WE	KQ	JN	FA
V	EMNL	URW	KOD	HT	BF	VXI	GA	QY	CS	PJ
W	SRAG	XDL	IWO	QC	JV	KFM	YB	HT	UP	NE
X	QGHV	TSC	NWI	YK	ML	PDX	JA	EU	OB	FR
Y	EUVF	ITP	JOA	HM	CR	XLG	DN	BK	QY	WS

NAVAIDS

Id	Name	Channel	Position	Elevation
DAN	Incirlik	21	N37 00.950 E035 26.883	243
AKR	Akrotiri	107	N34 34.765 E032 57.769	147
PHA	Paphos	79	N34 42.997 E032 28.963	35
RMD	Ramat David	84	N32 39.892 E035 11.265	136
OS66	Kuweires Military Aviation Institute	36	N36 11.362 E037 34.226	1200



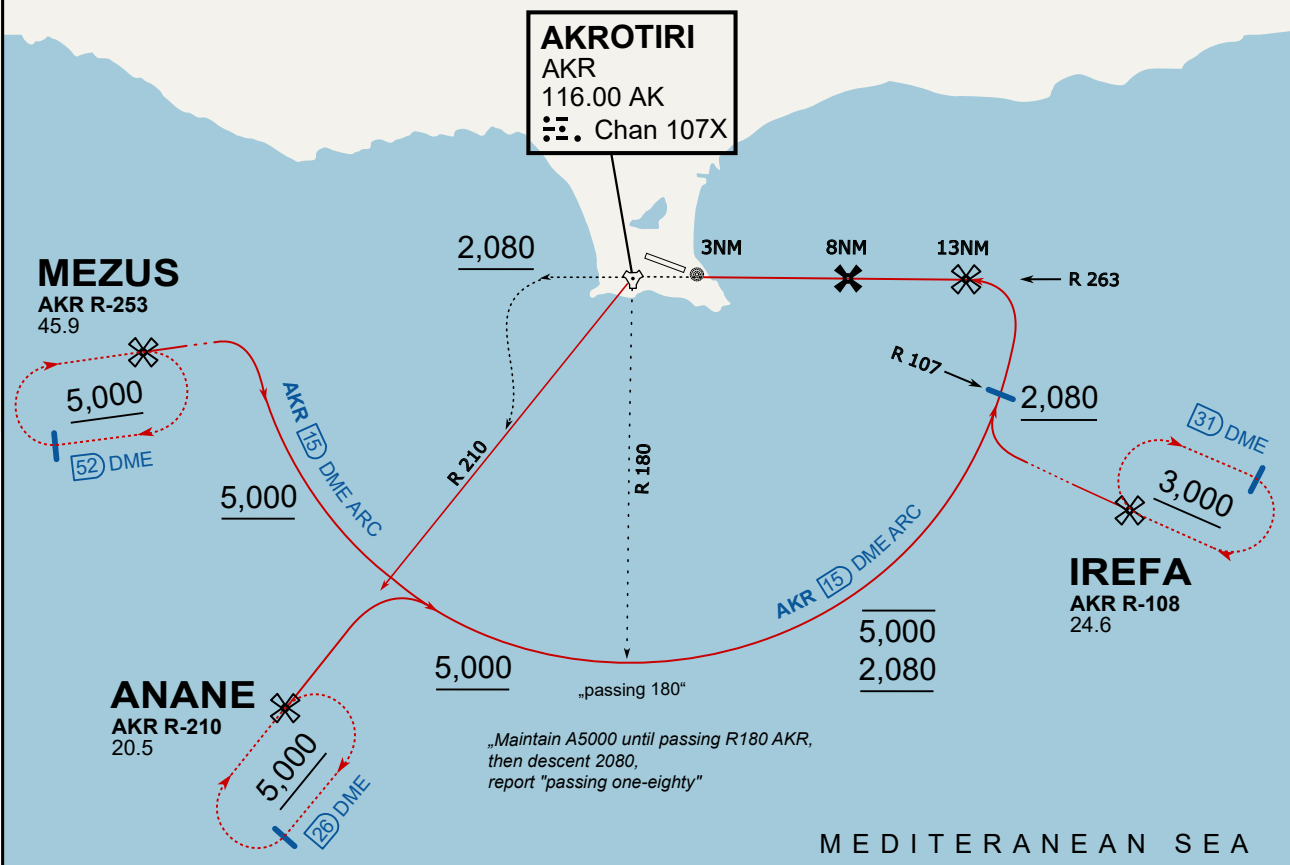




ATIS
 288.200
AKROTIRI GROUND
 122.100
AKROTIRI TOWER
 339.850
APP (OVERLORD)
 377.800

NOT FOR CIVIL USE

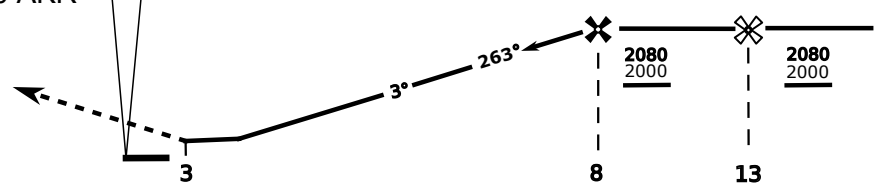
CAUTION: If unable to comply with restrictions advise ATC prior to departure.



On Track 263° climb A 4.000'.
 passing 2.080' (2.000' AAL)
 turn left and intercept R-210 AKR
 to ANANE.
 Enter ANANE Holding.

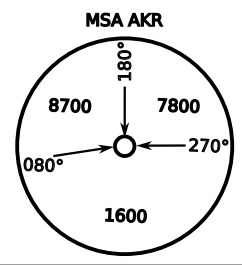


DME AKR	7	6	5	4
ALT	1780	1460	1140	820

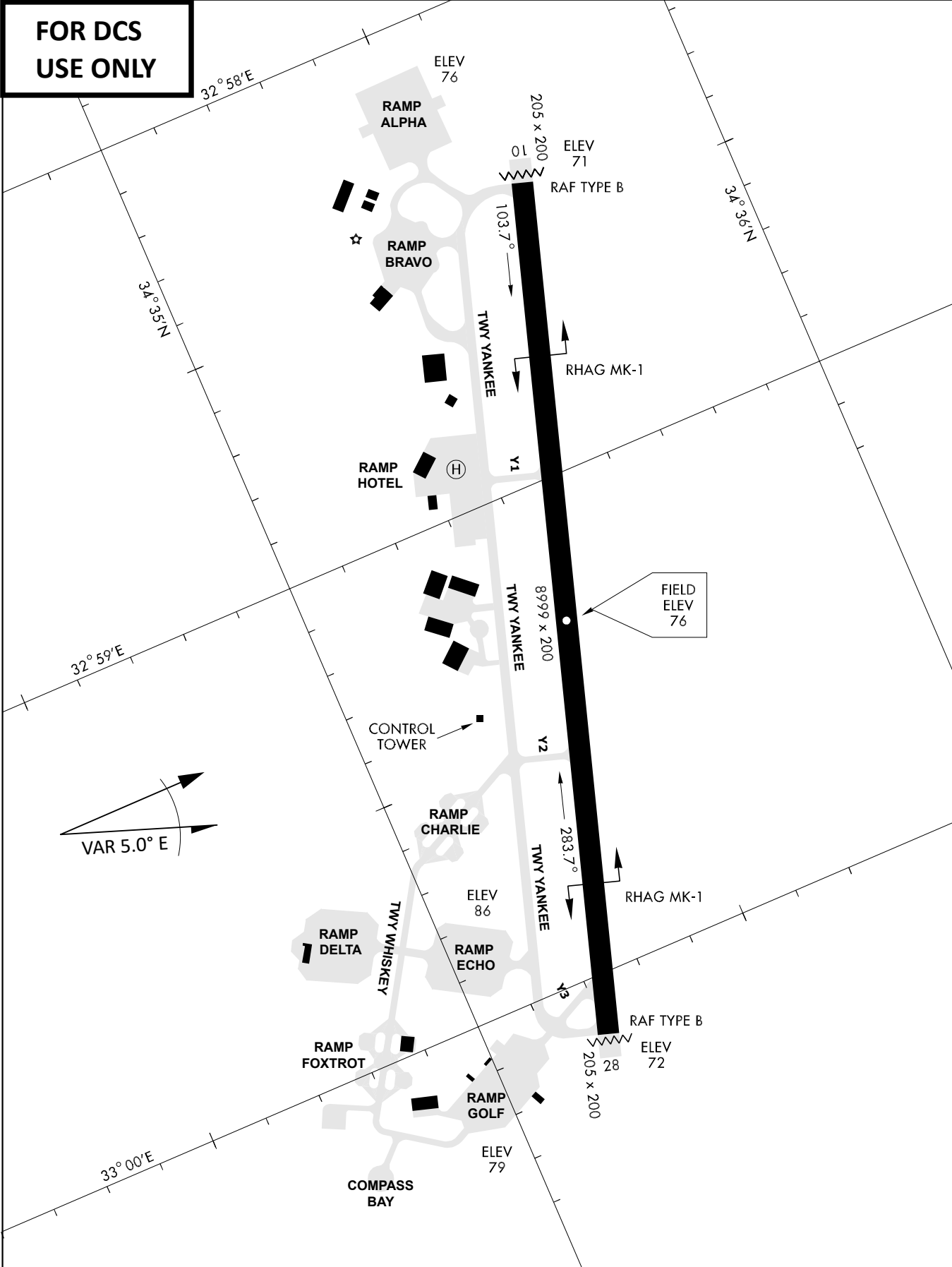


THR Elev 74ft DME AKR

CAT	TAC	CIRCLE	GS (kts)	80	120	150	180	210
A	500(430)	680 (610) 2000m	FAF - MAPt (4.1NM)	3:06	2:03	1:38	1:22	1:10
B	1300m		RoD (fpm)	420	640	800	950	1110
C	780 (710)	780 (710) 3300m	- CIRCLING PROHIBITED N of Rwy - final track is offset 20° right of RCL and Intcp 1.1NM before THR - when established on final contact tower - Timing not Auth to define MAPt					
D	2600m	780 (710) 3600m						
E	1380 (1310) 5000m	1380 (1310) 5000m						



**FOR DCS
 USE ONLY**



ATIS	AKROTIRI GND	AKROTIRI TWR	OVERLORD CONTROL	TACAN	FIELD ELEVATION
288.20 MHz	240.10 122.10	339.85 130.075	377.8	AKR 107X	75 [ft] 23 [m]