

MISSION DATA CARD

OPORD		Callsign		Mission		Date/Time		
2945/2024		Raptor 1		Training		280000MAY24		
Task	TAC Turns					Freq		
AO						134.0		
Departure				Recovery				
RWY28 VFR				RWY10 VFR				
#	Callsign		Pilot		IFF	TCN	LSR	NET

LOADOUT

A/A	2xA120C, 2xA9X				GUN	100% HEI-T	
A/G	2xA88C				CHF	60	
POD	HTS, A184, TGP				FLR	60	
TKS	2xFT300				FUEL	100%	

TOLD

	Takeoff	Target	Joker	Bingo	Land
FUEL	11169				

AIRBASES

	Name	TCN	ATIS	GND	TWR	RWY	Elev	ILS
Dep	Akrotiri AFB	107X	288.2	240.1	339.85	28	62	109.7
Arr	Akrotiri AFB	107X	288.2	240.1	339.85	28	62	109.7
Div	Paphos Internationl	79X	127.3		353.8	29	40	108.9

FLIGHTPLAN

#	Name	Navaid/Coords/DME	ALT	TOT
1	ECHO	N34 42.600 E033 10	5000	
2	PAPA	N34 39.390 E032 46.480	5000	
3	SIERRA	N34 25.310 E032 58.400	5000	

OTHER FLIGHTS

Callsign	Mission	Airframe	Freq	TCN	Grpld	Laser
Claw 2	Training	2x AH-64D	133.5	1/64		170X
AO		Task				
Edelweiss 1	Training	2x F-16C	134.5	11/74		171X
AO	South Cyprus	Task	BJT Check			
Edelweiss 1	Training	1x F-5E	264.15	1/64	1	171X
AO	Akrotiri	Task	F4 Erprobung			
Nazgul 6	BAI	4x F-15E	262.45	1/64		156X
AO	Akamas Bomb Range	Task	TF-Radar & Waypoint Training			
Python* 1	Training	1x AV-8B N/A	264.55	1/64		168X
AO		Task				
Panther 3	Training	3x F/A-18C	261.35	1/64		157X
AO		Task				
Monster 2	Training	3x A-10C	132.15	1/64	21	165X
AO	Convoy Hunt Training Range	Task	Dumb Rockets			

RADIO CHANNELS

#	Freq	Name
1		Flight/Squadron specific
2	288.2	Akrotiri ATIS
3	240.1	Akrotiri Ground
4	339.85	Aktrotiri Tower
5	335.05	Akrotiri Approach
6	360.1	Incirlik Tower
7	371.35	Incirlik Ground
8	377.475	Incirlik ATIS
9		No Preset
10	127.3	Paphos ATIS
11	353.8	Paphos Tower
12	304.0	CVN-73 George Washington
13	302.0	LHA-1 Tarawa
14	259.0	CV-59 Forrestal
15		No Preset
16	377.8	Overlord
17	265.0	KC-135 Texaco-1 medium/slow
18	319.8	KC-135 Arco-1
19	360.8	KC-135MPRS Arco-2
20	256.0	S-3B Recovery Tanker

RAMROD

0	1	2	3	4	5	6	7	8	9
O	U	T	P	L	A	Y	I	N	G

KTC 1400 C

	0	1	2	3	4	5	6	7	8	9
A	OADU	ITE	XQF	MR	SV	KNG	WB	CH	PJ	LY
B	LSGI	XJC	KBR	TH	MU	DVE	NA	QP	YO	FW
C	VJUK	GNX	OAB	LW	DT	MPF	RE	HQ	IY	SC
D	PCVU	JAF	IGK	RO	LQ	SED	MY	WX	NH	BT
E	LGFA	OYU	ECN	WD	VM	XKP	TR	HS	QI	BJ
F	JSGM	UIL	EXF	BO	YD	AHK	RN	WV	CQ	TP
G	BESC	NGI	WPK	YD	MV	RLH	TJ	QF	XO	AU
H	CLFJ	IRB	XDA	SU	QP	HVM	YO	ET	NW	KG
I	MGUQ	HBW	KXV	SF	RE	JDT	AP	LC	NI	YO
J	PSIL	AJE	URV	XF	HO	DTM	WC	QN	YK	BG
K	HVPQ	LSY	OBU	RI	WT	JFD	MG	AX	KC	NE
L	UMNG	JAT	LYF	CQ	WE	XSB	PD	OH	RV	IK
M	HIWE	BJG	NVR	MK	AS	COY	XL	PD	UT	FQ
N	FAHQ	ULM	GVC	JW	TE	SIR	BK	DN	YX	OP
O	TJDQ	FWV	BYP	XL	KN	IEA	GU	CS	OM	HR
P	NLOW	MPD	HBJ	XK	QA	ETS	YV	CR	UG	IF
Q	GXTB	FOW	HYI	UK	LV	EDA	RQ	PC	JN	MS
R	LQEM	IHU	SJD	VT	RP	OBW	FX	KG	CA	YN
S	SACB	TJE	WPV	GQ	UH	MXD	RO	NK	LY	IF
T	UBKR	PDC	VAQ	HO	WT	YLN	MF	IG	XS	EJ
U	GQTM	INV	CDJ	FE	SA	BLP	OR	XW	YK	UH
V	RYSX	BDG	PCH	AV	FU	QKL	WM	TE	IJ	NO
W	QLOW	IMP	SNX	BY	FA	KHV	UE	DJ	TG	CR
X	QFHL	TGE	VOS	PK	MY	JXB	DR	UC	NI	AW
Y	VBXT	ILM	SKH	JO	YA	PWU	DC	QG	RF	EN

NAVAIDS

Id	Name	Channel	Position	Elevation
DAN	Incirlik	21	N37 00.950 E035 26.883	243
AKR	Akrotiri	107	N34 34.765 E032 57.769	147
PHA	Paphos	79	N34 42.997 E032 28.963	35
RMD	Ramat David	84	N32 39.892 E035 11.265	136
OS66	Kuweires Military Aviation Institute	36	N36 11.362 E037 34.226	1200

**FOR DCS
 USE ONLY**

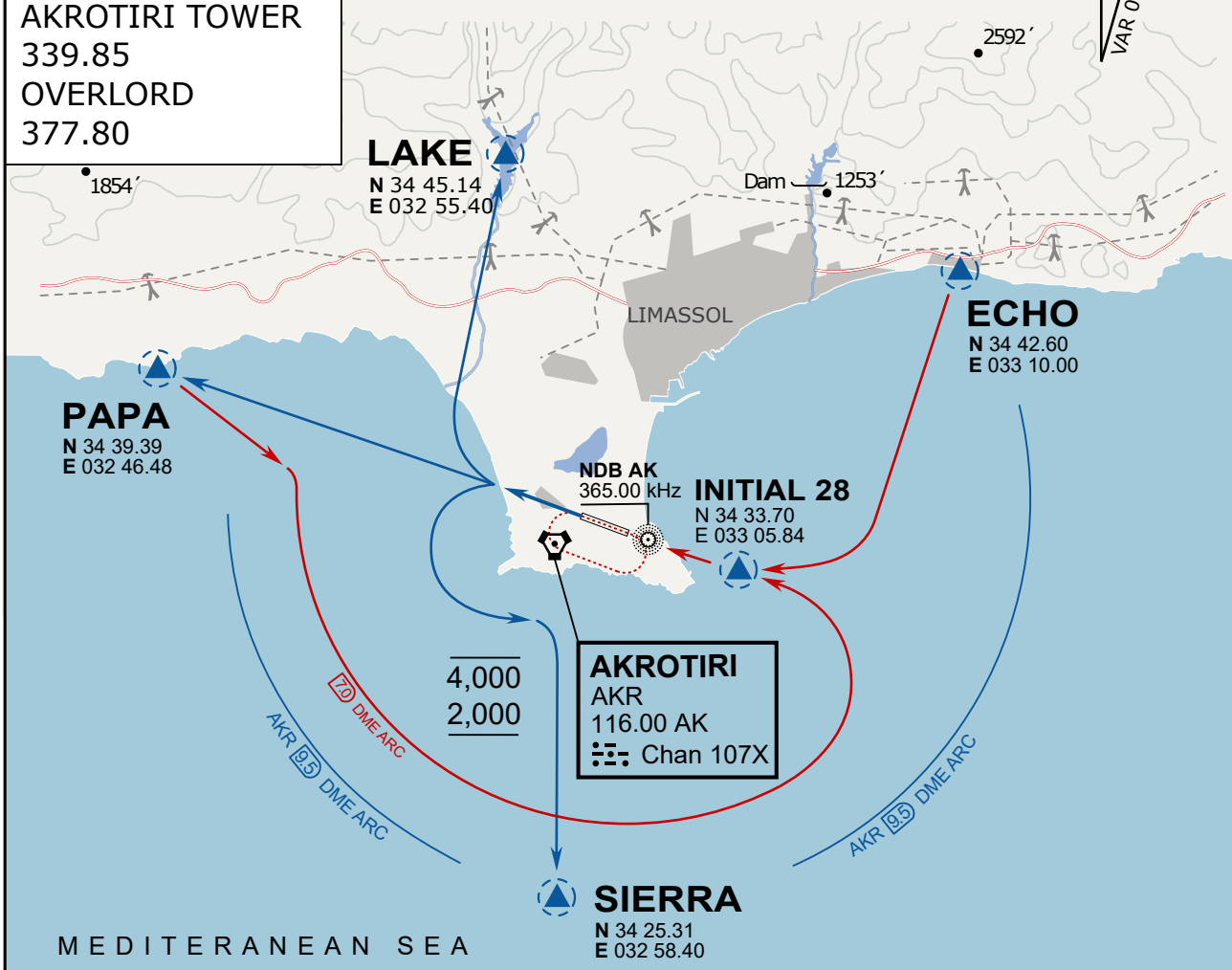


ATIS	AKROTIRI GND	AKROTIRI TWR	OVERLORD CONTROL	TACAN	FIELD ELEVATION
288.20 MHz	240.10 122.10	339.85 130.075	377.8	AKR 107X	75 [ft] 23 [m]

ATIS
 288.20
AKROTIRI GROUND
 240.10
AKROTIRI TOWER
 339.85
OVERLORD
 377.80

NOT FOR CIVIL USE

CAUTION: If unable to comply
 with restrictions advise ATC
 prior to departure.



ARR / DEP ROUTE DESCRIPTION

STRAIGHT-IN RWY28

Pass ENTRY at 5.000' MSL or below, pass INITIAL at 1.500' MSL or below.

OVERHEAD BREAK RWY28

Pass ENTRY at 5.000' MSL or below, pass INITIAL at 2.000' MSL, break to the south.

DEPARTURE GENERAL

Pass Departure end of runway at 1.000' or below.

DEP RWY28 PAPA: Fly straight ahead to exit.

DEP RWY28 LAKE: Fly straight ahead until coast, than right turn direct exit.

DEP RWY28 SIERRA: Fly straight ahead until coastline, then climbing left turn, intercept AKR R-180 to exit.

DEP ECHO: no exit.

ATIS

288.20

AKROTIRI GROUND

240.10

AKROTIRI TOWER

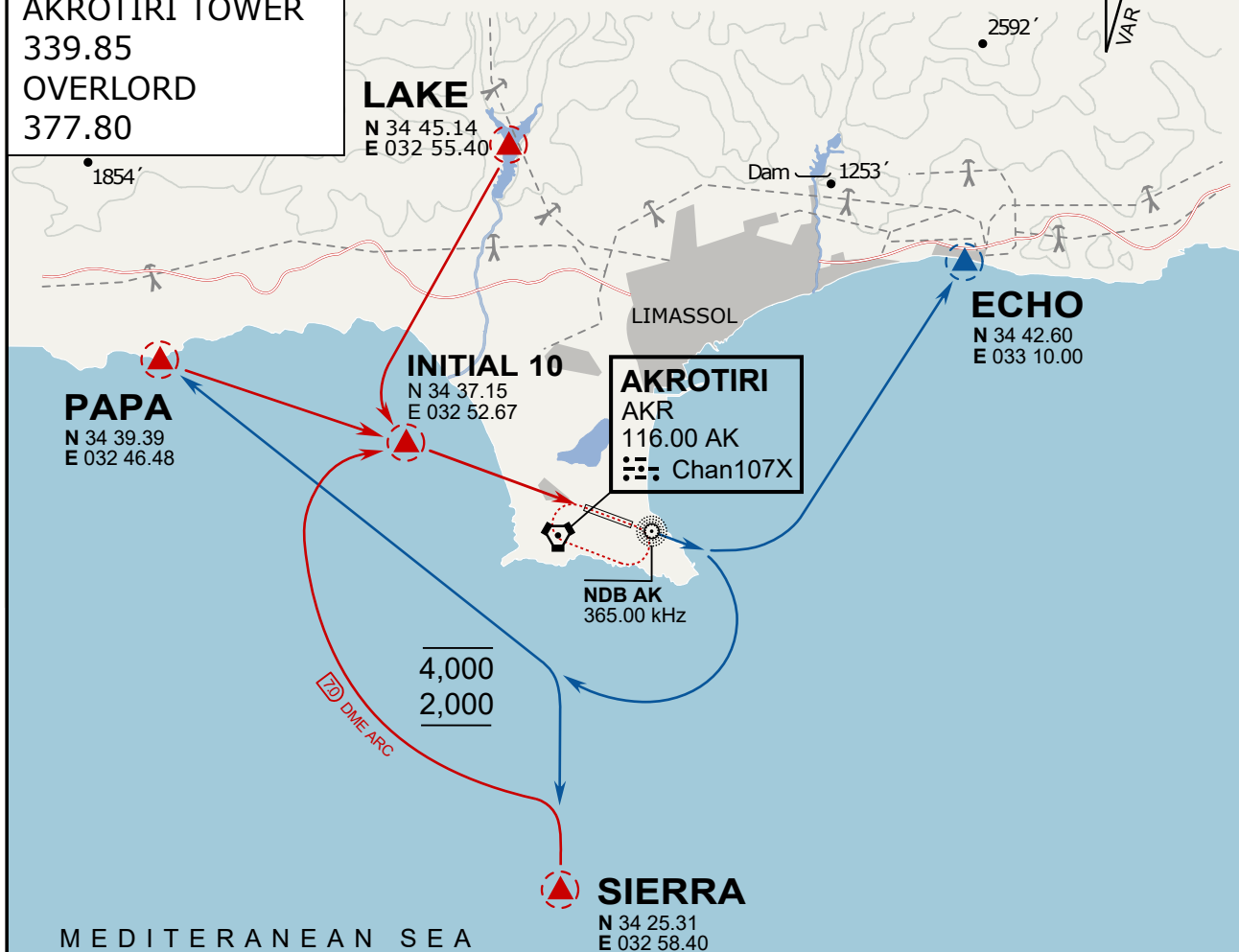
339.85

OVERLORD

377.80

NOT FOR CIVIL USE

CAUTION: If unable to comply with restrictions advise ATC prior to departure.



ARR / DEP ROUTE DESCRIPTION

ARRIVAL GENERAL

Pass Entry at 5.000' or below. Overhead Brake RWY 10: pass INITIAL 10 at 2.000' MSL.
Straight-in RWY 10 : pass INITIAL 1.500' or below.

ARR RWY10 PAPA / LAKE: Direct initial.

ARR RWY10 SIERRA: Intercept ARC 7 of AKR to INITIAL 10.

ARR ECHO: no ENTRY.

DEPARTURE GENERAL

Pass Departure end of runway at 1.000' AGL or below. Keep RWY heading until coastline.

DEP RWY10 ECHO: Direct EXIT.

DEP RWY10 SIERRA: Climbing right turn, intercept R180 AKR to Sierra.

DEP RWY10 PAPA: Climbing right turn until R180 AKR, then direct Papa

DEP LAKE: no EXIT.

NOT AVAILABLE

NOT AVAILABLE