

**MISSION DATA CARD**

OPORD		Callsign		Mission		Date/Time		
2941/2024		Raptor 1		Training		270000MAY24		
Task	TAC Turns					Freq		
AO						134.0		
Departure				Recovery				
RWY28 VFR				RWY10 VFR				
#	Callsign		Pilot		IFF	TCN	LSR	NET
-1	Raptor 1-1		Cyking		1611	1Y	1621	
-2	Raptor 1-2		Jinx		1612	64Y	1622	

**LOADOUT**

A/A	2xA120C, 2xA9X					GUN	100% HEI-T
A/G	2xA88C					CHF	60
POD	HTS, A184, TGP					FLR	60
TKS	2xFT300					FUEL	100%

**TOLD**

	Takeoff	Target	Joker	Bingo	Land
FUEL	11169				

**AIRBASES**

	Name	TCN	ATIS	GND	TWR	RWY	Elev	ILS
Dep	Akrotiri AFB	107X	288.2	240.1	339.85	28	62	109.7
Arr	Akrotiri AFB	107X	288.2	240.1	339.85	28	62	109.7
Div	Paphos Internationl	79X	127.3		353.8	29	40	108.9

**FLIGHTPLAN**

#	Name	Navaid/Coords/DME	ALT	TOT
1	ECHO	N34 42.600 E033 10	5000	
2	PAPA	N34 39.390 E032 46.480	5000	
3	SIERRA	N34 25.310 E032 58.400	5000	

**OTHER FLIGHTS**

Callsign	Mission	Airframe	Freq	TCN	Grpld	Laser
Tiger 1	Training	4x F/A-18C	261.15	1/64		155X
AO	Cape Pyla Bombing Range	Task	Training HADB			

**RADIO CHANNELS**

#	Freq	Name
1		Flight/Squadron specific
2	288.2	Akrotiri ATIS
3	240.1	Akrotiri Ground
4	339.85	Aktrotiri Tower
5	335.05	Akrotiri Approach
6	360.1	Incirlik Tower
7	371.35	Incirlik Ground
8	377.475	Incirlik ATIS
9		No Preset
10	127.3	Paphos ATIS
11	353.8	Paphos Tower
12	304.0	CVN-73 George Washington
13	302.0	LHA-1 Tarawa
14	259.0	CV-59 Forrestal
15		No Preset
16	377.8	Overlord
17	265.0	KC-135 Texaco-1 medium/slow
18	319.8	KC-135 Arco-1
19	360.8	KC-135MPRS Arco-2
20	256.0	S-3B Recovery Tanker

**RAMROD**

0	1	2	3	4	5	6	7	8	9
C	O	N	F	I	G	U	R	E	D

**KTC 1400 C**

	0	1	2	3	4	5	6	7	8	9
A	NYXT	APM	RIQ	KW	OG	SHF	VU	EJ	LD	BC
B	AVPS	JBO	NGE	IR	FW	UYC	KX	LT	MQ	HD
C	XLCQ	AGD	KPY	FE	SO	NJM	BW	VI	TU	RH
D	NCWS	EYB	RMK	FG	AO	QHD	TP	IV	JX	UL
E	XNRI	YCA	OMJ	LF	GQ	TPB	SW	DH	EV	UK
F	PQER	MAD	LXS	BC	JO	NGH	TY	FU	WK	VI
G	UWTP	VBJ	CSR	HN	MK	LDA	FG	OX	IQ	YE
H	OCHB	AKX	TVW	IQ	GR	MJP	UE	FD	YN	LS
I	XRSH	WAV	BDK	QP	YC	IGF	NU	ME	LT	OJ
J	RNVC	JHX	KDL	WQ	AF	MYB	OP	SI	TE	UG
K	PRTK	QOB	MXS	LN	YW	JEA	DG	HF	IV	CU
L	CPNH	ATQ	BXL	JS	KG	FVW	YI	RO	UE	MD
M	DCRP	QBV	JFY	XL	WA	UEO	TN	GH	IM	SK
N	BOXP	QVY	UHT	WL	GK	JCN	EI	AM	DR	SF
O	CNMO	ALU	YIS	QB	FE	DTR	JW	XG	VH	KP
P	TEYM	WVA	QFK	BG	XI	URH	OL	PN	JS	CD
Q	UOTH	QCW	MXY	LI	FS	PAR	BK	NV	DJ	EG
R	IVNA	BTW	XRD	YP	KF	QUG	JM	CH	OL	SE
S	OKQJ	NHB	PLA	CS	XW	DYM	GV	IU	TE	FR
T	ANFJ	IPC	YTW	UH	SX	BQG	MK	LR	DV	EO
U	ISLD	YJE	MAC	HO	UV	TNF	RQ	BX	KP	GW
V	KJXI	QWP	FGE	UH	VT	YMS	ND	AB	LO	CR
W	UMXY	NGJ	SEC	DV	QH	BOT	LA	IR	KW	PF
X	OJPW	CQE	XVI	LN	TG	BRH	FM	KS	UD	AY
Y	CWTK	FAD	LVN	QY	UG	JRO	HP	XS	IB	EM

**NAVAIDS**

<b>Id</b>	<b>Name</b>	<b>Channel</b>	<b>Position</b>	<b>Elevation</b>
DAN	Incirlik	21	N37 00.950 E035 26.883	243
AKR	Akrotiri	107	N34 34.765 E032 57.769	147
PHA	Paphos	79	N34 42.997 E032 28.963	35
RMD	Ramat David	84	N32 39.892 E035 11.265	136
OS66	Kuweires Military Aviation Institute	36	N36 11.362 E037 34.226	1200

**FOR DCS  
 USE ONLY**

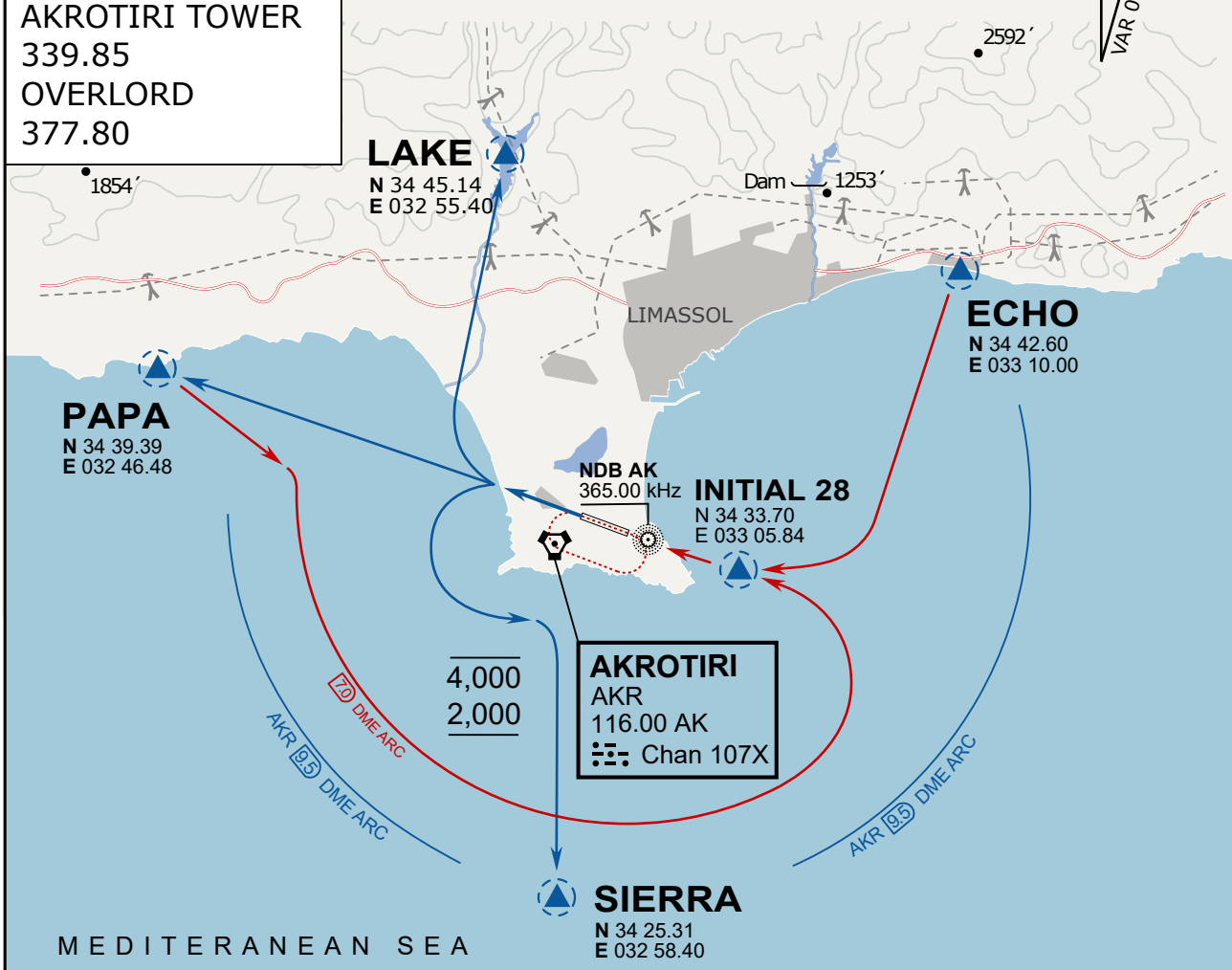


ATIS	AKROTIRI GND	AKROTIRI TWR	OVERLORD CONTROL	TACAN	FIELD ELEVATION
288.20 MHz	240.10   122.10	339.85   130.075	377.8	AKR 107X	<b>75 [ft] 23 [m]</b>

**ATIS**  
 288.20  
**AKROTIRI GROUND**  
 240.10  
**AKROTIRI TOWER**  
 339.85  
**OVERLORD**  
 377.80

**NOT FOR CIVIL USE**

CAUTION: If unable to comply with restrictions advise ATC prior to departure.



### ARR / DEP ROUTE DESCRIPTION

#### STRAIGHT-IN RWY28

Pass ENTRY at 5.000' MSL or below, pass INITIAL at 1.500' MSL or below.

#### OVERHEAD BREAK RWY28

Pass ENTRY at 5.000' MSL or below, pass INITIAL at 2.000' MSL, break to the south.

#### DEPARTURE GENERAL

Pass Departure end of runway at 1.000' or below.

DEP RWY28 PAPA: Fly straight ahead to exit.

DEP RWY28 LAKE: Fly straight ahead until coast, than right turn direct exit.

DEP RWY28 SIERRA: Fly straight ahead until coastline, then climbing left turn, intercept AKR R-180 to exit.

DEP ECHO: no exit.



ATIS

288.20

AKROTIRI GROUND

240.10

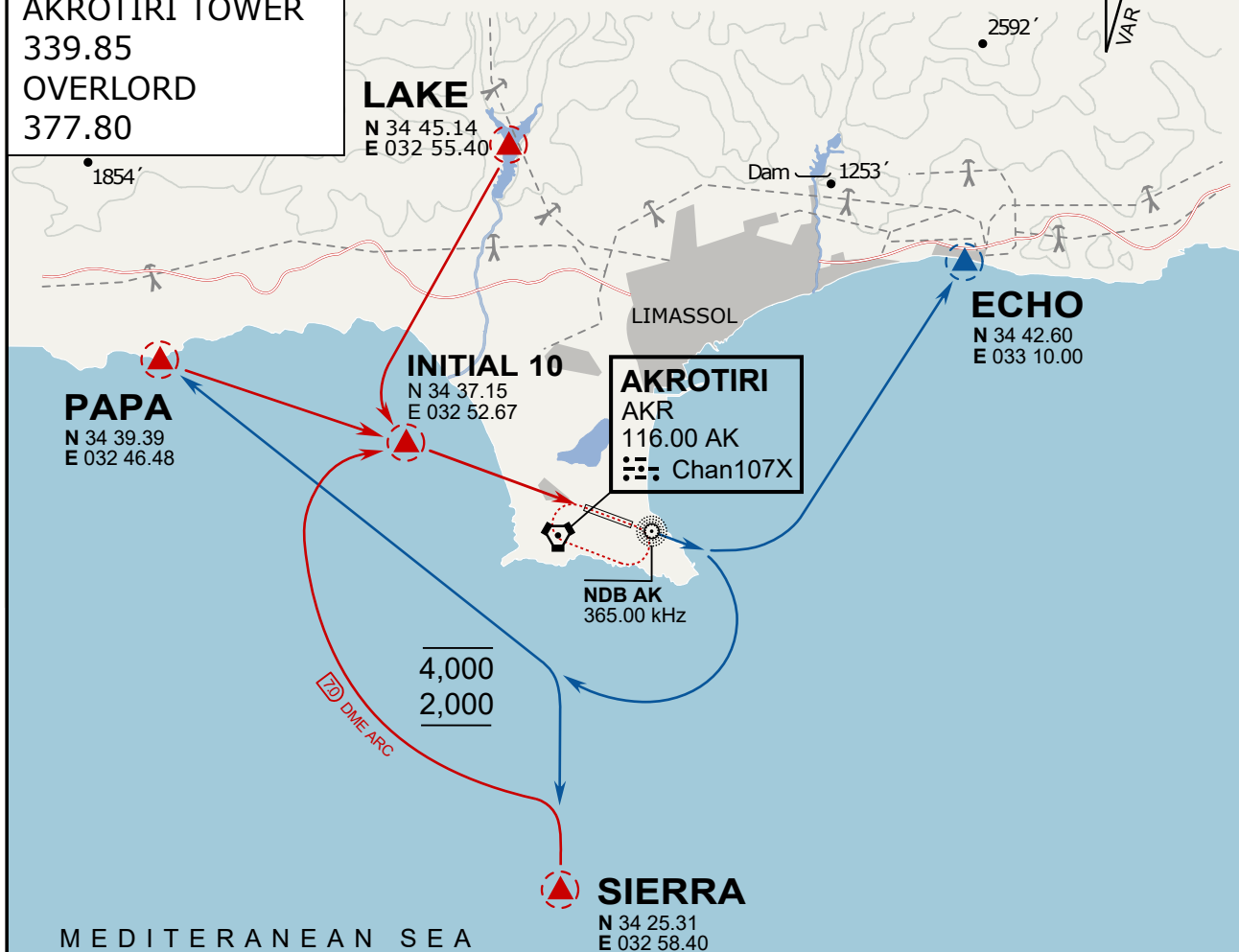
AKROTIRI TOWER

339.85

OVERLORD

377.80

NOT FOR CIVIL USE

CAUTION: If unable to comply  
with restrictions advise ATC  
prior to departure.

## ARR / DEP ROUTE DESCRIPTION

ARRIVAL GENERAL

Pass Entry at 5.000' or below. Overhead Brake RWY 10: pass INITIAL 10 at 2.000' MSL.  
Straight-in RWY 10 : pass INITIAL 1.500' or below.

ARR RWY10 PAPA / LAKE: Direct initial.

ARR RWY10 SIERRA: Intercept ARC 7 of AKR to INITIAL 10.

ARR ECHO: no ENTRY.

DEPARTURE GENERAL

Pass Departure end of runway at 1.000' AGL or below. Keep RWY heading until coastline.

DEP RWY10 ECHO: Direct EXIT.

DEP RWY10 SIERRA: Climbing right turn, intercept R180 AKR to Sierra.

DEP RWY10 PAPA: Climbing right turn until R180 AKR, then direct Papa

DEP LAKE: no EXIT.

**NOT AVAILABLE**

**NOT AVAILABLE**