

**MISSION DATA CARD**

OPORD		Callsign		Mission		Date/Time	
2939/2024		Python* 1		Training		272015MAY24	
Task							Freq
AO							264.55
Departure				Recovery			
CAT				CASE I			
#	Callsign	Pilot		IFF	TCN	LSR	NET
-1	Python* 1-1	Herby		3311	1Y	1681	

**LOADOUT**

A/A						GUN	
A/G						CHF	
POD						FLR	
TKS						FUEL	

**TOLD**

	Takeoff	Target	Joker	Bingo	Land
FUEL	7758				

**AIRBASES**

	Name	TCN	ATIS	GND	TWR	RWY	Elev	ILS
Dep	LHA-1 Tarawa	85X			302.0			
Arr	LHA-1 Tarawa	85X			302.0			
Div	Akrotiri AFB	107X	288.2	240.1	339.85	28	62	109.7

**SUPPORT****Tanker**

Callsign	TCN	Freq	ALT	TAS
ARCO 2	41Y	360.8	FL220	400
	Pos	ARCO2: (N3653 E03452)		
TEXACO 2	44Y	244.78	FL150	250
	Pos	TEXACO2: (N3424 E03403)		

**AWACS**

Callsign	Freq	ALT	Pos
OVERLORD2	377.8	FL320	N3713 E03643 - N3714 E03749

## OTHER FLIGHTS

Callsign	Mission	Airframe	Freq	TCN	Grpld	Laser
Claw 2	Training	2x AH-64D	133.5	1/64		170X
AO		Task				
Edelweiss 1	Training	2x F-16C	134.5	11/74		171X
AO	South Cyprus	Task	BJT Check			
Edelweiss 1	Training	1x F-5E	264.15	1/64	1	171X
AO	Akrotiri	Task	F4 Erprobung			
Nazgul 6	BAI	4x F-15E	262.45	1/64		156X
AO	Akamas Bomb Range	Task	TF-Radar & Waypoint Training			
Panther 3	Training	3x F/A-18C	261.35	1/64		157X
AO		Task				
Monster 2	Training	3x A-10C	132.15	1/64	21	165X
AO	Convoy Hunt Training Range	Task	Dumb Rockets			
Raptor 1	Training	4x F-16C	134.0	1/64		162X
AO		Task	TAC Turns			

**RADIO CHANNELS**

#	Freq	Name
1		Flight/Squadron specific
2	288.2	Akrotiri ATIS
3	240.1	Akrotiri Ground
4	339.85	Aktrotiri Tower
5	335.05	Akrotiri Approach
6	360.1	Incirlik Tower
7	371.35	Incirlik Ground
8	377.475	Incirlik ATIS
9		No Preset
10	127.3	Paphos ATIS
11	353.8	Paphos Tower
12	304.0	CVN-73 George Washington
13	302.0	LHA-1 Tarawa
14	259.0	CV-59 Forrestal
15		No Preset
16	377.8	Overlord
17	265.0	KC-135 Texaco-1 medium/slow
18	319.8	KC-135 Arco-1
19	360.8	KC-135MPRS Arco-2
20	256.0	S-3B Recovery Tanker

**RAMROD**

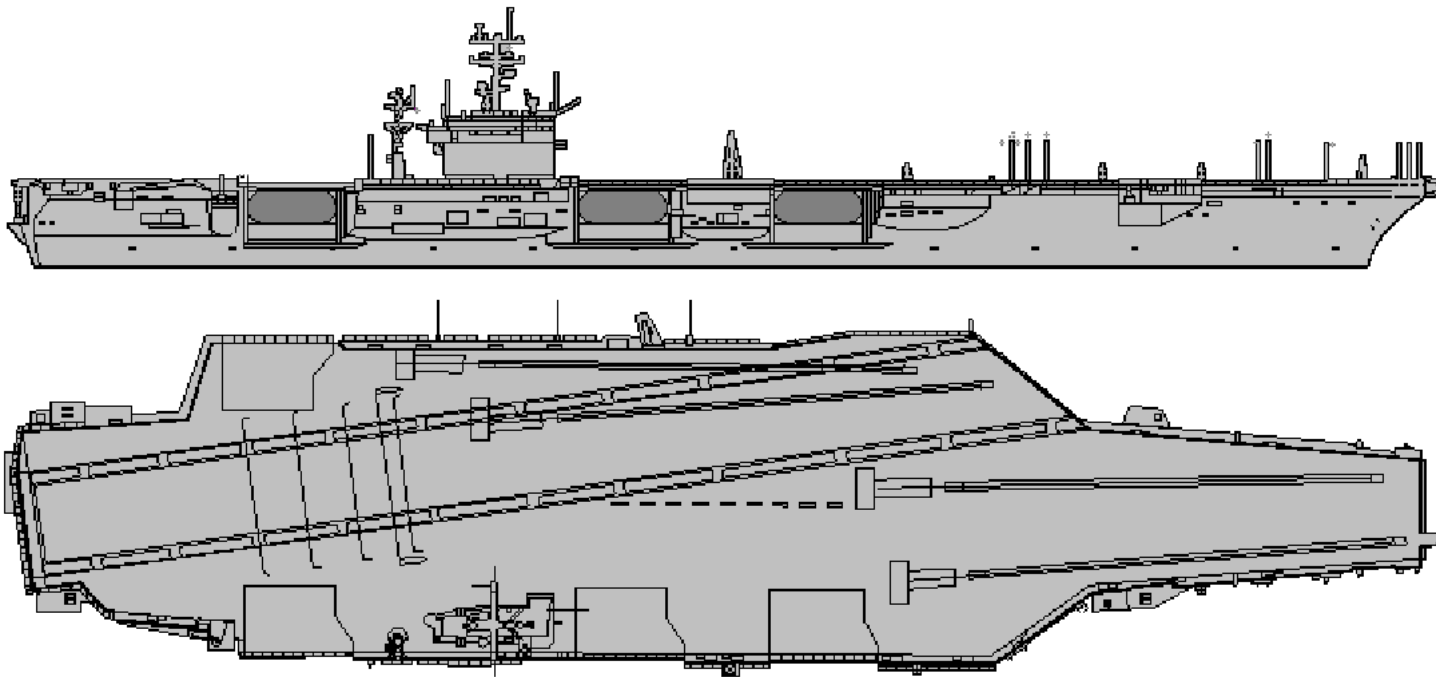
0	1	2	3	4	5	6	7	8	9
C	O	N	F	I	G	U	R	E	D

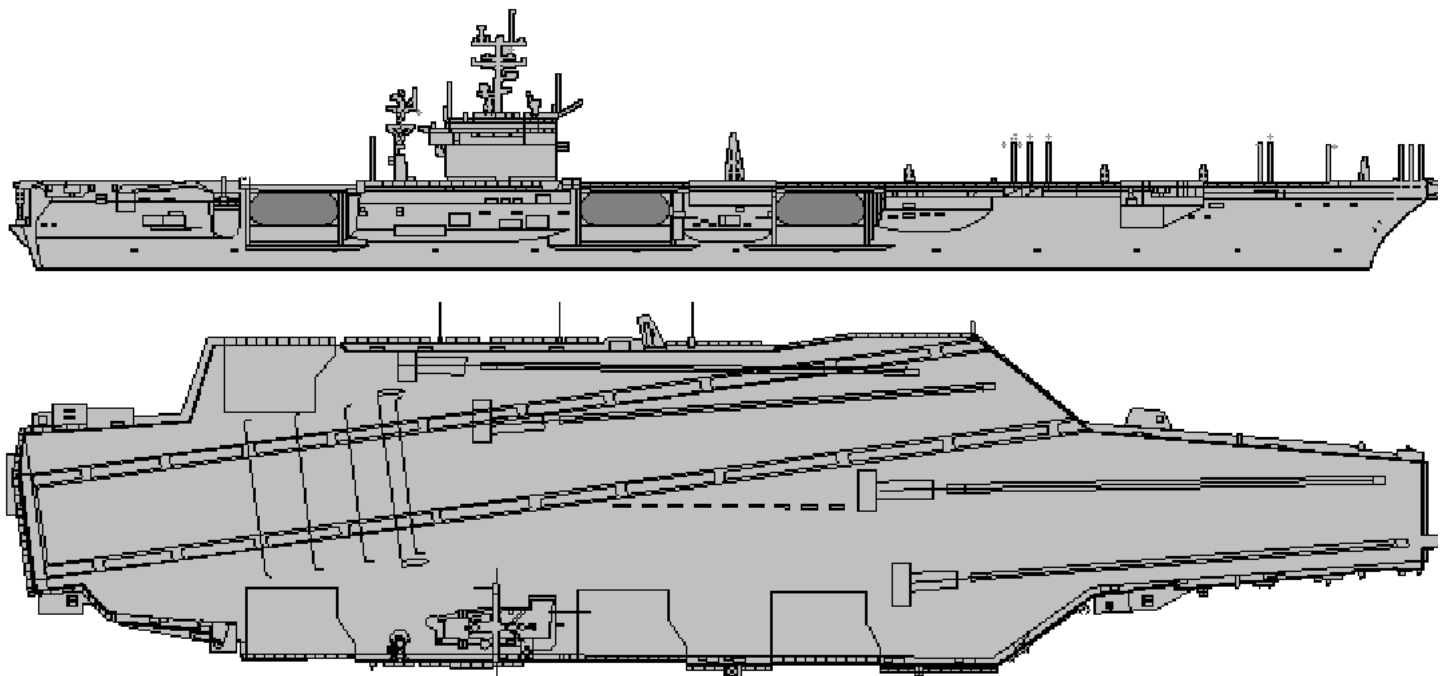
**KTC 1400 C**

	0	1	2	3	4	5	6	7	8	9
A	NYXT	APM	RIQ	KW	OG	SHF	VU	EJ	LD	BC
B	AVPS	JBO	NGE	IR	FW	UYC	KX	LT	MQ	HD
C	XLCQ	AGD	KPY	FE	SO	NJM	BW	VI	TU	RH
D	NCWS	EYB	RMK	FG	AO	QHD	TP	IV	JX	UL
E	XNRI	YCA	OMJ	LF	GQ	TPB	SW	DH	EV	UK
F	PQER	MAD	LXS	BC	JO	NGH	TY	FU	WK	VI
G	UWTP	VBJ	CSR	HN	MK	LDA	FG	OX	IQ	YE
H	OCHB	AKX	TVW	IQ	GR	MJP	UE	FD	YN	LS
I	XRSH	WAV	BDK	QP	YC	IGF	NU	ME	LT	OJ
J	RNVC	JHX	KDL	WQ	AF	MYB	OP	SI	TE	UG
K	PRTK	QOB	MXS	LN	YW	JEA	DG	HF	IV	CU
L	CPNH	ATQ	BXL	JS	KG	FVW	YI	RO	UE	MD
M	DCRP	QBV	JFY	XL	WA	UEO	TN	GH	IM	SK
N	BOXP	QVY	UHT	WL	GK	JCN	EI	AM	DR	SF
O	CNMO	ALU	YIS	QB	FE	DTR	JW	XG	VH	KP
P	TEYM	WVA	QFK	BG	XI	URH	OL	PN	JS	CD
Q	UOTH	QCW	MXY	LI	FS	PAR	BK	NV	DJ	EG
R	IVNA	BTW	XRD	YP	KF	QUG	JM	CH	OL	SE
S	OKQJ	NHB	PLA	CS	XW	DYM	GV	IU	TE	FR
T	ANFJ	IPC	YTW	UH	SX	BQG	MK	LR	DV	EO
U	ISLD	YJE	MAC	HO	UV	TNF	RQ	BX	KP	GW
V	KJXI	QWP	FGE	UH	VT	YMS	ND	AB	LO	CR
W	UMXY	NGJ	SEC	DV	QH	BOT	LA	IR	KW	PF
X	OJPW	CQE	XVI	LN	TG	BRH	FM	KS	UD	AY
Y	CWTK	FAD	LVN	QY	UG	JRO	HP	XS	IB	EM

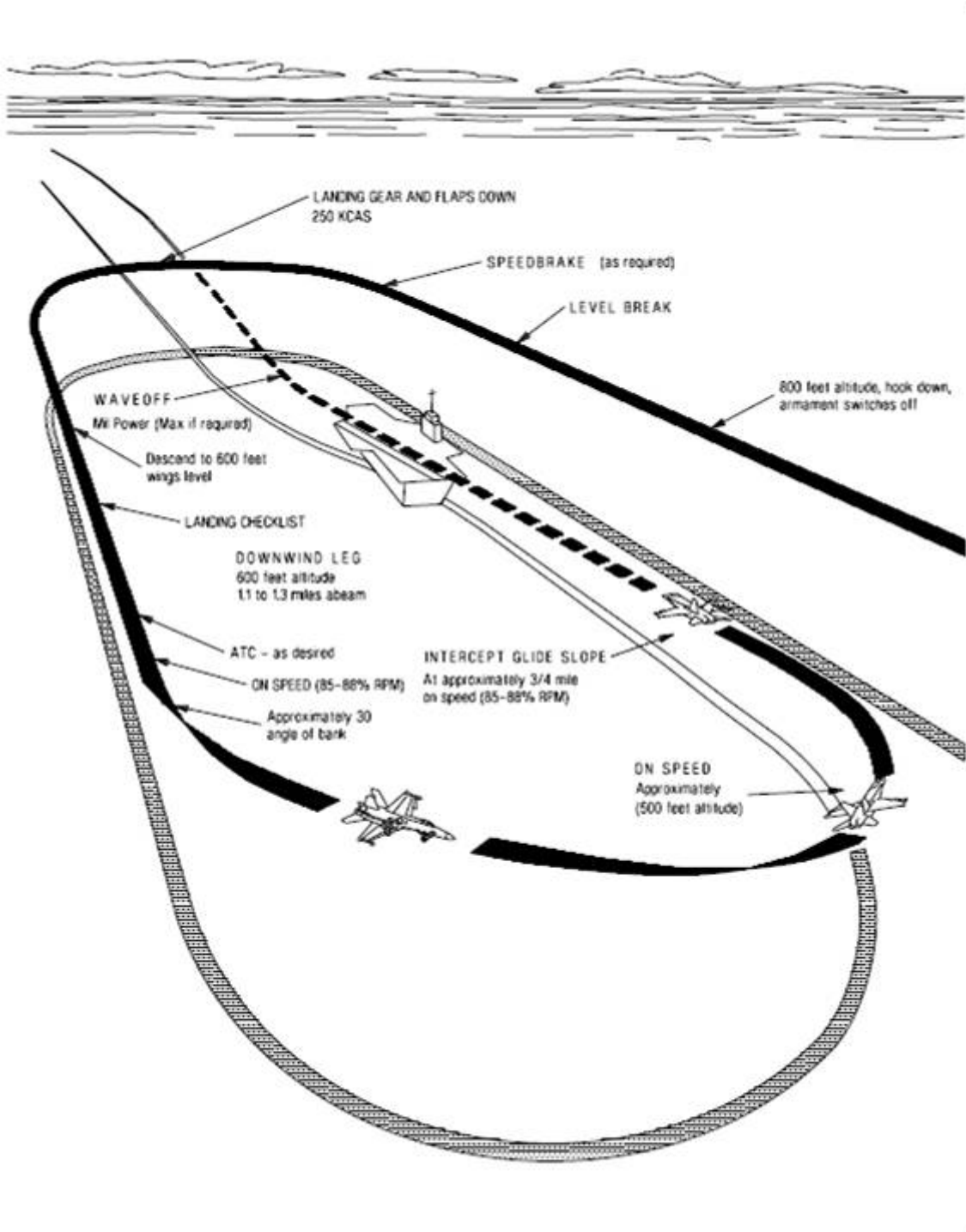
**NAVAIDS**

<b>Id</b>	<b>Name</b>	<b>Channel</b>	<b>Position</b>	<b>Elevation</b>
DAN	Incirlik	21	N37 00.950 E035 26.883	243
AKR	Akrotiri	107	N34 34.765 E032 57.769	147
PHA	Paphos	79	N34 42.997 E032 28.963	35
RMD	Ramat David	84	N32 39.892 E035 11.265	136
OS66	Kuweires Military Aviation Institute	36	N36 11.362 E037 34.226	1200





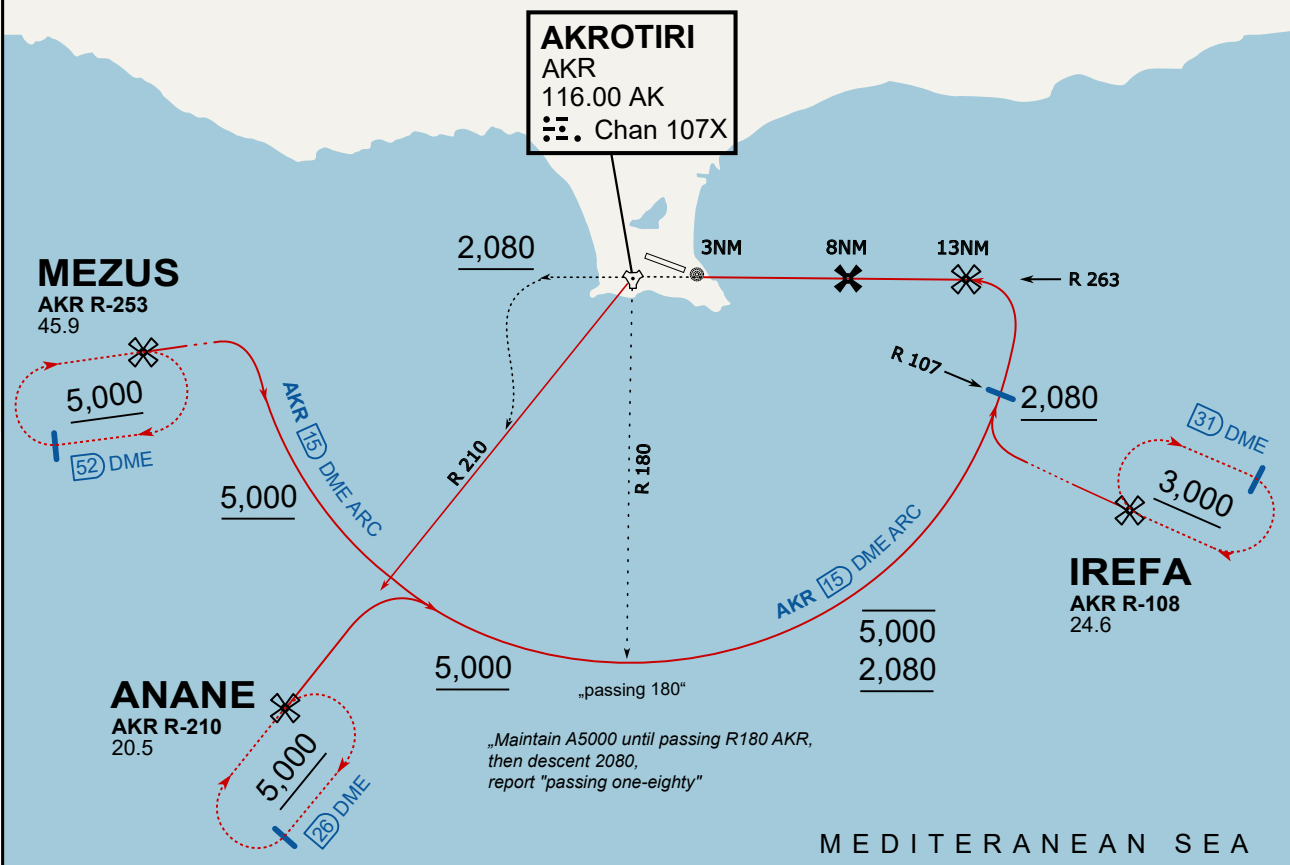




**ATIS**  
 288.200  
**AKROTIRI GROUND**  
 122.100  
**AKROTIRI TOWER**  
 339.850  
**APP (OVERLORD)**  
 377.800

## NOT FOR CIVIL USE

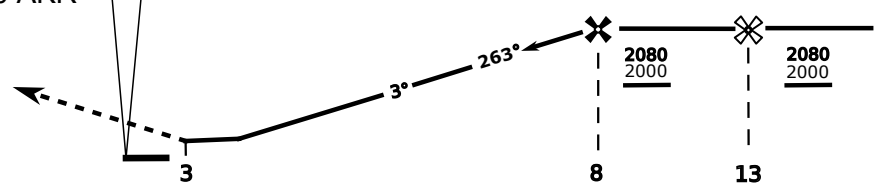
CAUTION: If unable to comply with restrictions advise ATC prior to departure.



On Track 263° climb A 4.000'.  
 passing 2.080' (2.000' AAL)  
 turn left and intercept R-210 AKR  
 to ANANE.  
 Enter ANANE Holding.

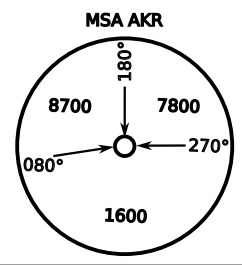


DME AKR	7	6	5	4
ALT	1780	1460	1140	820

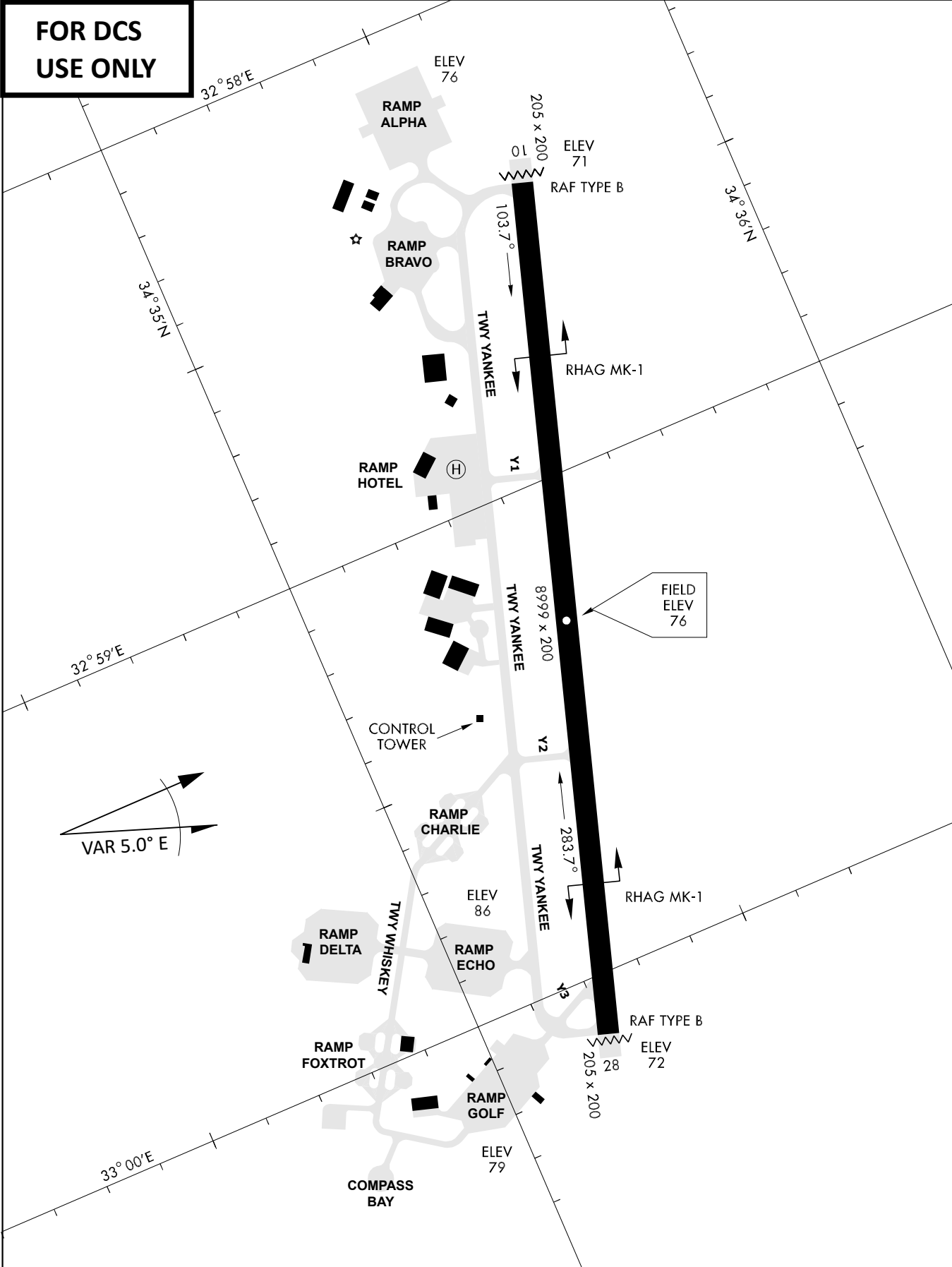


THR Elev 74ft DME AKR

CAT	TAC	CIRCLE	GS (kts)	80	120	150	180	210
A	500(430)	680 (610) 2000m	FAF - MAPt (4.1NM)	3:06	2:03	1:38	1:22	1:10
B	1300m		RoD (fpm)	420	640	800	950	1110
C	780 (710) 2600m	N/A	780 (710) 3300m	- CIRCLING PROHIBITED N of Rwy - final track is offset 20° right of RCL and Intcp 1.1NM before THR - when established on final contact tower - Timing not Auth to define MAPt				
D			780 (710) 3600m					
E			1380 (1310) 5000m					
			1380 (1310) 5000m					



**FOR DCS  
 USE ONLY**



ATIS	AKROTIRI GND	AKROTIRI TWR	OVERLORD CONTROL	TACAN	FIELD ELEVATION
288.20 MHz	240.10   122.10	339.85   130.075	377.8	AKR 107X	<b>75 [ft] 23 [m]</b>