

MISSION DATA CARD

OPORD		Callsign		Mission		Date/Time		
2935/2024		Edelweiss 1		Training		272005MAY24		
Task	BJT Check					Freq		
AO	South Cyprus					134.5		
Departure				Recovery				
RWY10 VFR				RWY10 VFR				
#	Callsign		Pilot		IFF	TCN	LSR	NET
-1	Edelweiss 1-1		Snowbird		1711	11Y	1711	
-2	Edelweiss 1-2		Nerkub		1712	74Y	1712	

LOADOUT

A/A	2xA120C, 2xA9X				GUN	100% HEI-T	
A/G					CHF	120	
POD					FLR	0	
TKS	FT300				FUEL	100%	

TOLD

	Takeoff	Target	Joker	Bingo	Land
FUEL	9166				

AIRBASES

	Name	TCN	ATIS	GND	TWR	RWY	Elev	ILS
Dep	Akrotiri AFB	107X	288.2	240.1	339.85	28	62	109.7
Arr	Akrotiri AFB	107X	288.2	240.1	339.85	28	62	109.7

FLIGHTPLAN

#	Name	Navaid/Coords/DME	ALT	TOT
1	ECHO	N34 42.600 E033 10	5000	
2	PAPA	N34 39.390 E032 46.480	5000	
3	SIERRA	N34 25.310 E032 58.400	5000	

NOTES

- Ground Handling
- Takeoff, Close Traffic Pattern, Landing
- Level Flight
- 30° Level Turn
- 60° Level Turn
- Aileron Roll
- Chandell
- Barrel Roll
- Loop
- Split-S
- Unloaded
- Lift Limit Pull
- Traffic Pattern Entry

SUPPORT**Tanker**

Callsign	TCN	Freq	ALT	TAS
TEXACO 1	71Y	265.0	FL170	300
	Pos	TEXACO1: (N3657 E03434)		
ARCO 1	22Y	319.8	FL222	400
	Pos	ARCO1: (N3701 E03457)		
SHELL 3	93Y	278.75	FL170	215
	Pos	SHELL3: (N3436 E03419)		

OTHER FLIGHTS

Callsign	Mission	Airframe	Freq	TCN	Grpld	Laser
Claw 2	Training	2x AH-64D	133.5	1/64		170X
AO		Task				
Edelweiss 1	Training	1x F-5E	264.15	1/64	1	171X
AO	Akrotiri	Task	F4 Erprobung			
Nazgul 6	BAI	4x F-15E	262.45	1/64		156X
AO	Akamas Bomb Range	Task	TF-Radar & Waypoint Training			
Python* 1	Training	1x AV-8B N/A	264.55	1/64		168X
AO		Task				
Panther 3	Training	3x F/A-18C	261.35	1/64		157X
AO		Task				
Monster 2	Training	3x A-10C	132.15	1/64	21	165X
AO	Convoy Hunt Training Range	Task	Dumb Rockets			
Raptor 1	Training	4x F-16C	134.0	1/64		162X
AO		Task	TAC Turns			

RADIO CHANNELS

#	Freq	Name
1		Flight/Squadron specific
2	288.2	Akrotiri ATIS
3	240.1	Akrotiri Ground
4	339.85	Aktrotiri Tower
5	335.05	Akrotiri Approach
6	360.1	Incirlik Tower
7	371.35	Incirlik Ground
8	377.475	Incirlik ATIS
9		No Preset
10	127.3	Paphos ATIS
11	353.8	Paphos Tower
12	304.0	CVN-73 George Washington
13	302.0	LHA-1 Tarawa
14	259.0	CV-59 Forrestal
15		No Preset
16	377.8	Overlord
17	265.0	KC-135 Texaco-1 medium/slow
18	319.8	KC-135 Arco-1
19	360.8	KC-135MPRS Arco-2
20	256.0	S-3B Recovery Tanker

RAMROD

0	1	2	3	4	5	6	7	8	9
C	O	N	F	I	G	U	R	E	D

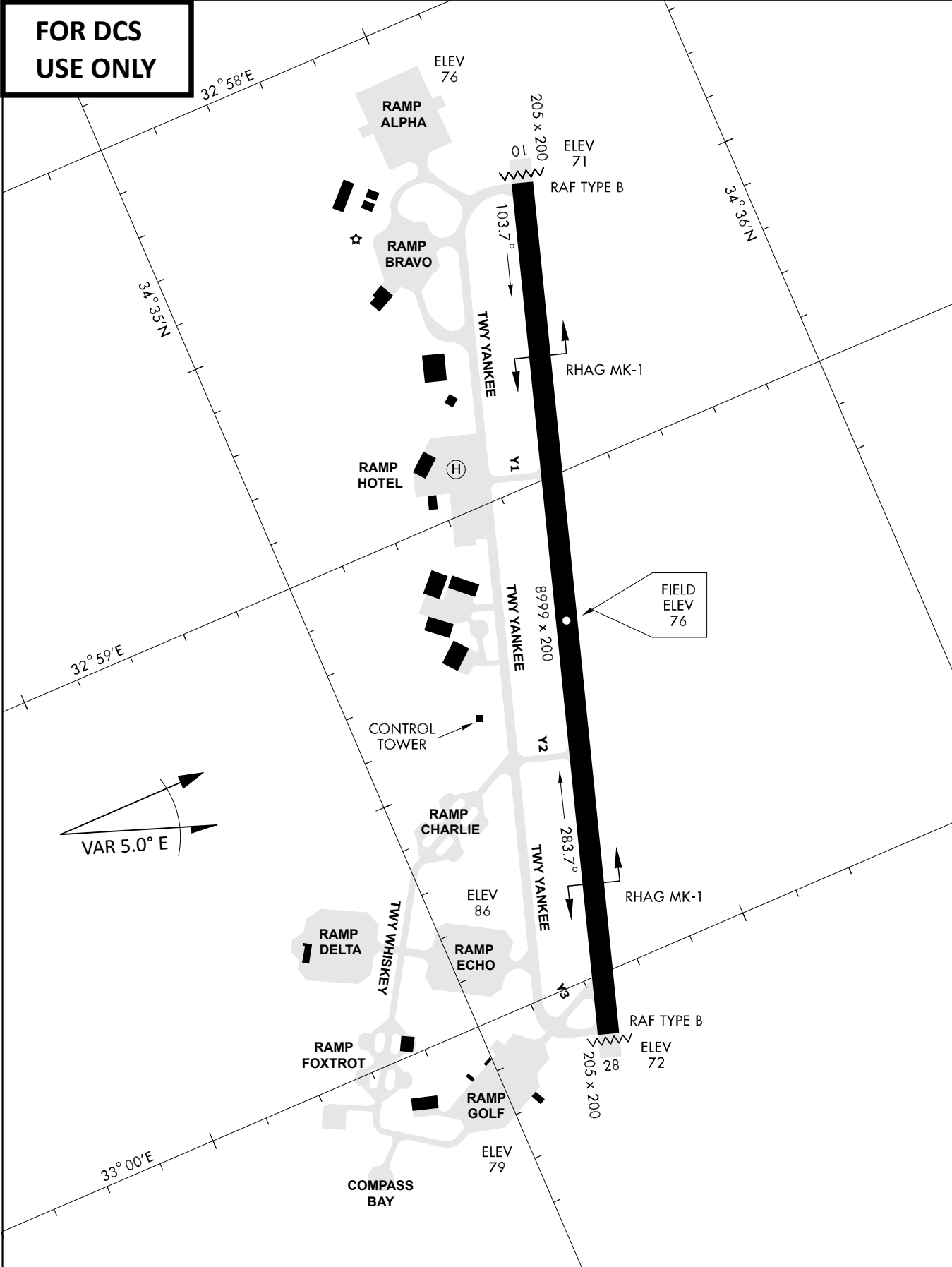
KTC 1400 C

	0	1	2	3	4	5	6	7	8	9
A	NYXT	APM	RIQ	KW	OG	SHF	VU	EJ	LD	BC
B	AVPS	JBO	NGE	IR	FW	UYC	KX	LT	MQ	HD
C	XLCQ	AGD	KPY	FE	SO	NJM	BW	VI	TU	RH
D	NCWS	EYB	RMK	FG	AO	QHD	TP	IV	JX	UL
E	XNRI	YCA	OMJ	LF	GQ	TPB	SW	DH	EV	UK
F	PQER	MAD	LXS	BC	JO	NGH	TY	FU	WK	VI
G	UWTP	VBJ	CSR	HN	MK	LDA	FG	OX	IQ	YE
H	OCHB	AKX	TVW	IQ	GR	MJP	UE	FD	YN	LS
I	XRSH	WAV	BDK	QP	YC	IGF	NU	ME	LT	OJ
J	RNVC	JHX	KDL	WQ	AF	MYB	OP	SI	TE	UG
K	PRTK	QOB	MXS	LN	YW	JEA	DG	HF	IV	CU
L	CPNH	ATQ	BXL	JS	KG	FVW	YI	RO	UE	MD
M	DCRP	QBV	JFY	XL	WA	UEO	TN	GH	IM	SK
N	BOXP	QVY	UHT	WL	GK	JCN	EI	AM	DR	SF
O	CNMO	ALU	YIS	QB	FE	DTR	JW	XG	VH	KP
P	TEYM	WVA	QFK	BG	XI	URH	OL	PN	JS	CD
Q	UOTH	QCW	MXY	LI	FS	PAR	BK	NV	DJ	EG
R	IVNA	BTW	XRD	YP	KF	QUG	JM	CH	OL	SE
S	OKQJ	NHB	PLA	CS	XW	DYM	GV	IU	TE	FR
T	ANFJ	IPC	YTW	UH	SX	BQG	MK	LR	DV	EO
U	ISLD	YJE	MAC	HO	UV	TNF	RQ	BX	KP	GW
V	KJXI	QWP	FGE	UH	VT	YMS	ND	AB	LO	CR
W	UMXY	NGJ	SEC	DV	QH	BOT	LA	IR	KW	PF
X	OJPW	CQE	XVI	LN	TG	BRH	FM	KS	UD	AY
Y	CWTK	FAD	LVN	QY	UG	JRO	HP	XS	IB	EM

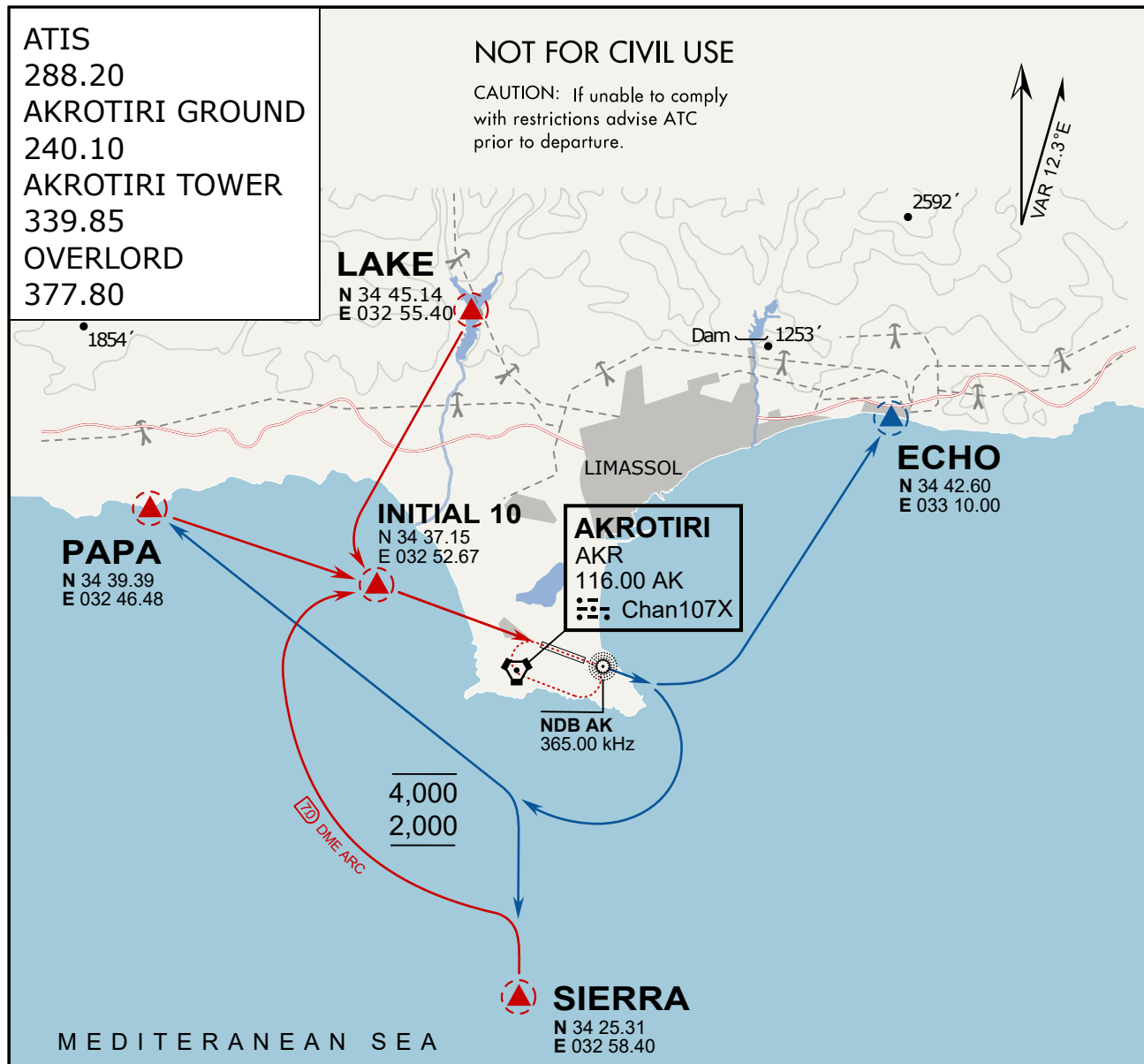
NAVAIDS

Id	Name	Channel	Position	Elevation
DAN	Incirlik	21	N37 00.950 E035 26.883	243
AKR	Akrotiri	107	N34 34.765 E032 57.769	147
PHA	Paphos	79	N34 42.997 E032 28.963	35
RMD	Ramat David	84	N32 39.892 E035 11.265	136
OS66	Kuweires Military Aviation Institute	36	N36 11.362 E037 34.226	1200

**FOR DCS
 USE ONLY**



ATIS	AKROTIRI GND	AKROTIRI TWR	OVERLORD CONTROL	TACAN	FIELD ELEVATION
288.20 MHz	240.10 122.10	339.85 130.075	377.8	AKR 107X	75 [ft] 23 [m]



ARR / DEP ROUTE DESCRIPTION

ARRIVAL GENERAL

Pass Entry at 5.000' or below. Overhead Brake RWY 10: pass INITIAL 10 at 2.000' MSL.
Straight-in RWY 10 : pass INITIAL 1.500' or below.

ARR RWY10 PAPA / LAKE: Direct initial.

ARR RWY10 SIERRA: Intercept ARC 7 of AKR to INITIAL 10.

ARR ECHO: no ENTRY.

DEPARTURE GENERAL

Pass Departure end of runway at 1.000' AGL or below. Keep RWY heading until coastline.

DEP RWY10 ECHO: Direct EXIT.

DEP RWY10 SIERRA: Climbing right turn, intercept R180 AKR to Sierra.

DEP RWY10 PAPA: Climbing right turn until R180 AKR, then direct Papa

DEP LAKE: no EXIT.

ATIS

288.20

AKROTIRI GROUND

240.10

AKROTIRI TOWER

339.85

OVERLORD

377.80

NOT FOR CIVIL USE

CAUTION: If unable to comply
with restrictions advise ATC
prior to departure.

ARR / DEP ROUTE DESCRIPTION

ARRIVAL GENERAL

Pass Entry at 5.000' or below. Overhead Brake RWY 10: pass INITIAL 10 at 2.000' MSL.
Straight-in RWY 10 : pass INITIAL 1.500' or below.

ARR RWY10 PAPA / LAKE: Direct initial.

ARR RWY10 SIERRA: Intercept ARC 7 of AKR to INITIAL 10.

ARR ECHO: no ENTRY.

DEPARTURE GENERAL

Pass Departure end of runway at 1.000' AGL or below. Keep RWY heading until coastline.

DEP RWY10 ECHO: Direct EXIT.

DEP RWY10 SIERRA: Climbing right turn, intercept R180 AKR to Sierra.

DEP RWY10 PAPA: Climbing right turn until R180 AKR, then direct Papa

DEP LAKE: no EXIT.