

MISSION DATA CARD

OPORD		Callsign		Mission		Date/Time		
2933/2024		Claw 2		Training		272007MAY24		
Task						Freq		
AO						133.5		
Departure				Recovery				
Helicopter VFR				Helicopter VFR				
#	Callsign		Pilot		IFF	TCN	LSR	NET
-1	Claw 2-1		Mütze/Warblade		4521	1Y	1701	
-2	Claw 2-2		Hudson/Laud		4522	64Y	1702	

LOADOUT

A/A						GUN	100% HEDP
A/G	4xM229 - HE MPP					CHF	30
POD						FLR	60
TKS						FUEL	100%

TOLD

	Takeoff	Target	Joker	Bingo	Land
FUEL	2513				

AIRBASES

	Name	TCN	ATIS	GND	TWR	RWY	Elev	ILS
Dep	Akrotiri AFB	107X	288.2	240.1	339.85	28	62	109.7
Arr	Akrotiri AFB	107X	288.2	240.1	339.85	28	62	109.7

FLIGHTPLAN

#	Name	Navaid/Coords/DME	ALT	TOT
1	LAKE	N34 45.150 E032 55.400		

COMMS

Radio	Usage
1	133.50
2	339.85 / 377.8
3	35.35

NOTES

tgt N34 55.00 E033 01.00

OTHER FLIGHTS

Callsign	Mission	Airframe	Freq	TCN	Grpld	Laser
Edelweiss 1	Training	2x F-16C	134.5	11/74		171X
AO	South Cyprus	Task	BJT Check			
Edelweiss 1	Training	1x F-5E	264.15	1/64	1	171X
AO	Akrotiri	Task	F4 Erprobung			
Nazgul 6	BAI	4x F-15E	262.45	1/64		156X
AO	Akamas Bomb Range	Task	TF-Radar & Waypoint Training			
Python* 1	Training	1x AV-8B N/A	264.55	1/64		168X
AO		Task				
Panther 3	Training	3x F/A-18C	261.35	1/64		157X
AO		Task				
Monster 2	Training	3x A-10C	132.15	1/64	21	165X
AO	Convoy Hunt Training Range	Task	Dumb Rockets			
Raptor 1	Training	4x F-16C	134.0	1/64		162X
AO		Task	TAC Turns			

RADIO CHANNELS

#	Freq	Name
1		Flight/Squadron specific
2	288.2	Akrotiri ATIS
3	240.1	Akrotiri Ground
4	339.85	Aktrotiri Tower
5	335.05	Akrotiri Approach
6	360.1	Incirlik Tower
7	371.35	Incirlik Ground
8	377.475	Incirlik ATIS
9		No Preset
10	127.3	Paphos ATIS
11	353.8	Paphos Tower
12	304.0	CVN-73 George Washington
13	302.0	LHA-1 Tarawa
14	259.0	CV-59 Forrestal
15		No Preset
16	377.8	Overlord
17	265.0	KC-135 Texaco-1 medium/slow
18	319.8	KC-135 Arco-1
19	360.8	KC-135MPRS Arco-2
20	256.0	S-3B Recovery Tanker

RAMROD

0	1	2	3	4	5	6	7	8	9
C	O	N	F	I	G	U	R	E	D

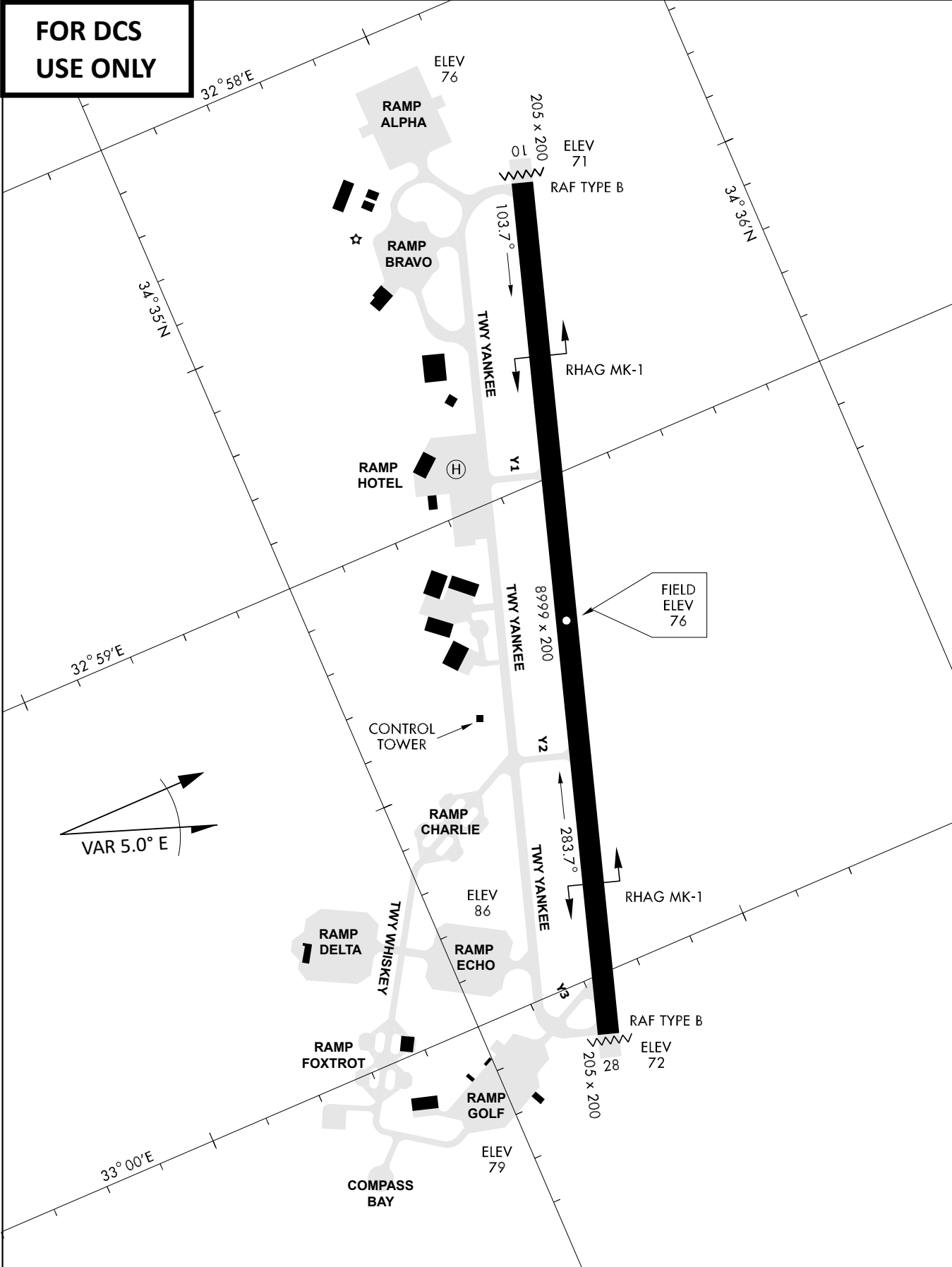
KTC 1400 C

	0	1	2	3	4	5	6	7	8	9
A	NYXT	APM	RIQ	KW	OG	SHF	VU	EJ	LD	BC
B	AVPS	JBO	NGE	IR	FW	UYC	KX	LT	MQ	HD
C	XLCQ	AGD	KPY	FE	SO	NJM	BW	VI	TU	RH
D	NCWS	EYB	RMK	FG	AO	QHD	TP	IV	JX	UL
E	XNRI	YCA	OMJ	LF	GQ	TPB	SW	DH	EV	UK
F	PQER	MAD	LXS	BC	JO	NGH	TY	FU	WK	VI
G	UWTP	VBJ	CSR	HN	MK	LDA	FG	OX	IQ	YE
H	OCHB	AKX	TVW	IQ	GR	MJP	UE	FD	YN	LS
I	XRSH	WAV	BDK	QP	YC	IGF	NU	ME	LT	OJ
J	RNVC	JHX	KDL	WQ	AF	MYB	OP	SI	TE	UG
K	PRTK	QOB	MXS	LN	YW	JEA	DG	HF	IV	CU
L	CPNH	ATQ	BXL	JS	KG	FVW	YI	RO	UE	MD
M	DCRP	QBV	JFY	XL	WA	UEO	TN	GH	IM	SK
N	BOXP	QVY	UHT	WL	GK	JCN	EI	AM	DR	SF
O	CNMO	ALU	YIS	QB	FE	DTR	JW	XG	VH	KP
P	TEYM	WVA	QFK	BG	XI	URH	OL	PN	JS	CD
Q	UOTH	QCW	MXY	LI	FS	PAR	BK	NV	DJ	EG
R	IVNA	BTW	XRD	YP	KF	QUG	JM	CH	OL	SE
S	OKQJ	NHB	PLA	CS	XW	DYM	GV	IU	TE	FR
T	ANFJ	IPC	YTW	UH	SX	BQG	MK	LR	DV	EO
U	ISLD	YJE	MAC	HO	UV	TNF	RQ	BX	KP	GW
V	KJXI	QWP	FGE	UH	VT	YMS	ND	AB	LO	CR
W	UMXY	NGJ	SEC	DV	QH	BOT	LA	IR	KW	PF
X	OJPW	CQE	XVI	LN	TG	BRH	FM	KS	UD	AY
Y	CWTK	FAD	LVN	QY	UG	JRO	HP	XS	IB	EM

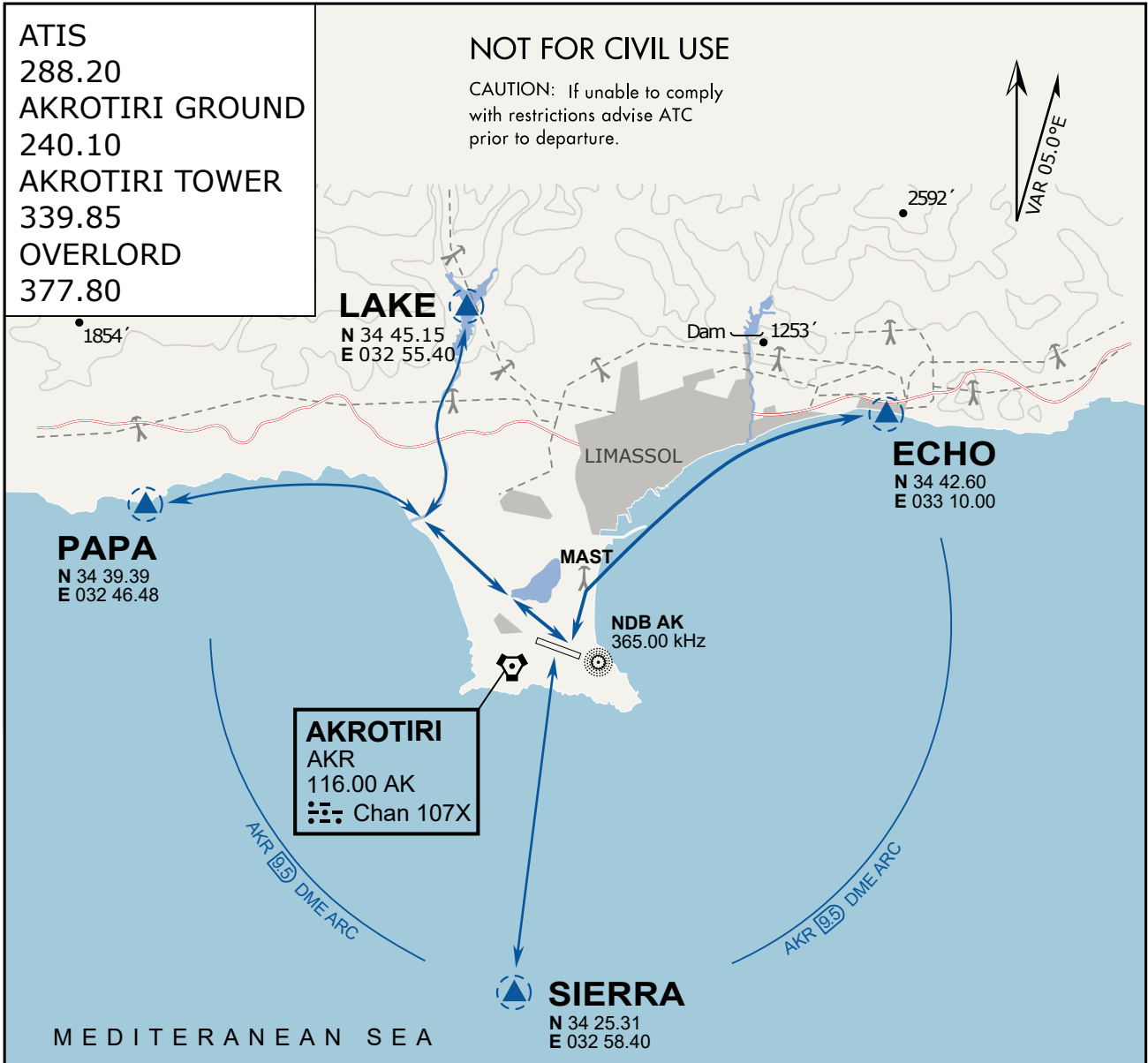
NAVAIDS

Id	Name	Channel	Position	Elevation
DAN	Incirlik	21	N37 00.950 E035 26.883	243
AKR	Akrotiri	107	N34 34.765 E032 57.769	147
PHA	Paphos	79	N34 42.997 E032 28.963	35
RMD	Ramat David	84	N32 39.892 E035 11.265	136
OS66	Kuweires Military Aviation Institute	36	N36 11.362 E037 34.226	1200

**FOR DCS
 USE ONLY**



ATIS	AKROTIRI GND	AKROTIRI TWR	OVERLORD CONTROL	TACAN	FIELD ELEVATION
288.20 MHz	240.10 122.10	339.85 130.075	377.8	AKR 107X	75 [ft] 23 [m]



ARR / DEP ROUTE DESCRIPTION

GENERAL

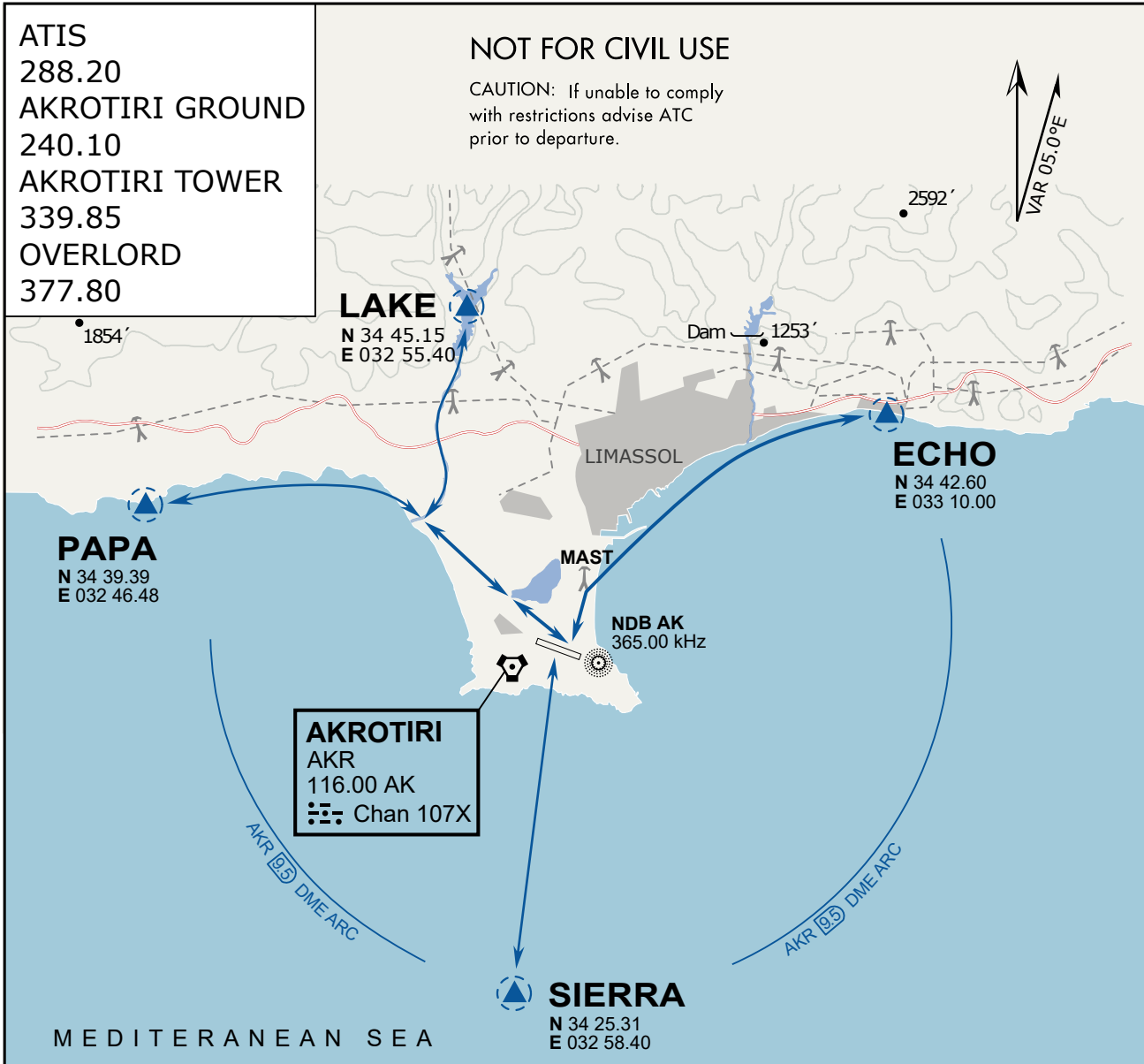
Stay at or below 500' AGL.

DEPARTURE

- ECHO: Via the 4 masts, along the coastline to EXIT.
- LAKE: Stay SOUTH WEST of the dry lake, to the river mouth, follow river to EXIT.
- PAPA: Stay SOUTH WEST of the dry lake, follow coastline to EXIT.
- SIERRA: Direct EXIT.

ARRIVAL

- LAKE: Follow river to coastline, then direct LCRA.
- PAPA: Follow coastline to rivermouth, then direct LCRA.
- ECHO: Follow coastline to the 4 masts, then to LCRA.
- SIERRA: Direct to LCRA.



ARR / DEP ROUTE DESCRIPTION

GENERAL

Stay at or below 500' AGL.

DEPARTURE

- ECHO: Via the 4 masts, along the coastline to EXIT.
- LAKE: Stay SOUTH WEST of the dry lake, to the river mouth, follow river to EXIT.
- PAPA: Stay SOUTH WEST of the dry lake, follow coastline to EXIT.
- SIERRA: Direct EXIT.

ARRIVAL

- LAKE: Follow river to coastline, then direct LCRA.
- PAPA: Follow coastline to rivermouth, then direct LCRA.
- ECHO: Follow coastline to the 4 masts, then to LCRA.
- SIERRA: Direct to LCRA.