

MISSION DATA CARD

OPORD		Callsign		Mission		Date/Time		
2932/2024		Playboy* 1		Training		251222MAY24		
Task						Freq		
AO						134.0		
Departure				Recovery				
RWY10 SID				TAC 28				
#	Callsign		Pilot		IFF	TCN	LSR	NET
-1	Playboy* 1-1		Jinx		1701	1Y	1701	

LOADOUT

A/A						GUN	
A/G						CHF	
POD						FLR	
TKS						FUEL	

TOLD

	Takeoff	Target	Joker	Bingo	Land
FUEL	7163				

AIRBASES

	Name	TCN	ATIS	GND	TWR	RWY	Elev	ILS
Dep	Akrotiri AFB	107X	288.2	240.1	339.85	28	62	109.7
Arr	Akrotiri AFB	107X	288.2	240.1	339.85	28	62	109.7

FLIGHTPLAN

#	Name	Navaid/Coords/DME	ALT	TOT
1	IREFA	N34 25.328 E033 26.664	9000	
2	MEZUS	N34 25.109 E032 03.519	5000	

SUPPORT**Tanker**

Callsign	TCN	Freq	ALT	TAS
ARCO 1	22Y	319.8	FL222	400
Pos	ARCO1: (N3701 E03457)			

RADIO CHANNELS

#	Freq	Name
1		Flight/Squadron specific
2	288.2	Akrotiri ATIS
3	240.1	Akrotiri Ground
4	339.85	Aktrotiri Tower
5	335.05	Akrotiri Approach
6	360.1	Incirlik Tower
7	371.35	Incirlik Ground
8	377.475	Incirlik ATIS
9		No Preset
10	127.3	Paphos ATIS
11	353.8	Paphos Tower
12	304.0	CVN-73 George Washington
13	302.0	LHA-1 Tarawa
14	259.0	CV-59 Forrestal
15		No Preset
16	377.8	Overlord
17	265.0	KC-135 Texaco-1 medium/slow
18	319.8	KC-135 Arco-1
19	360.8	KC-135MPRS Arco-2
20	256.0	S-3B Recovery Tanker

RAMROD

0	1	2	3	4	5	6	7	8	9
U	N	S	T	E	A	D	I	L	Y

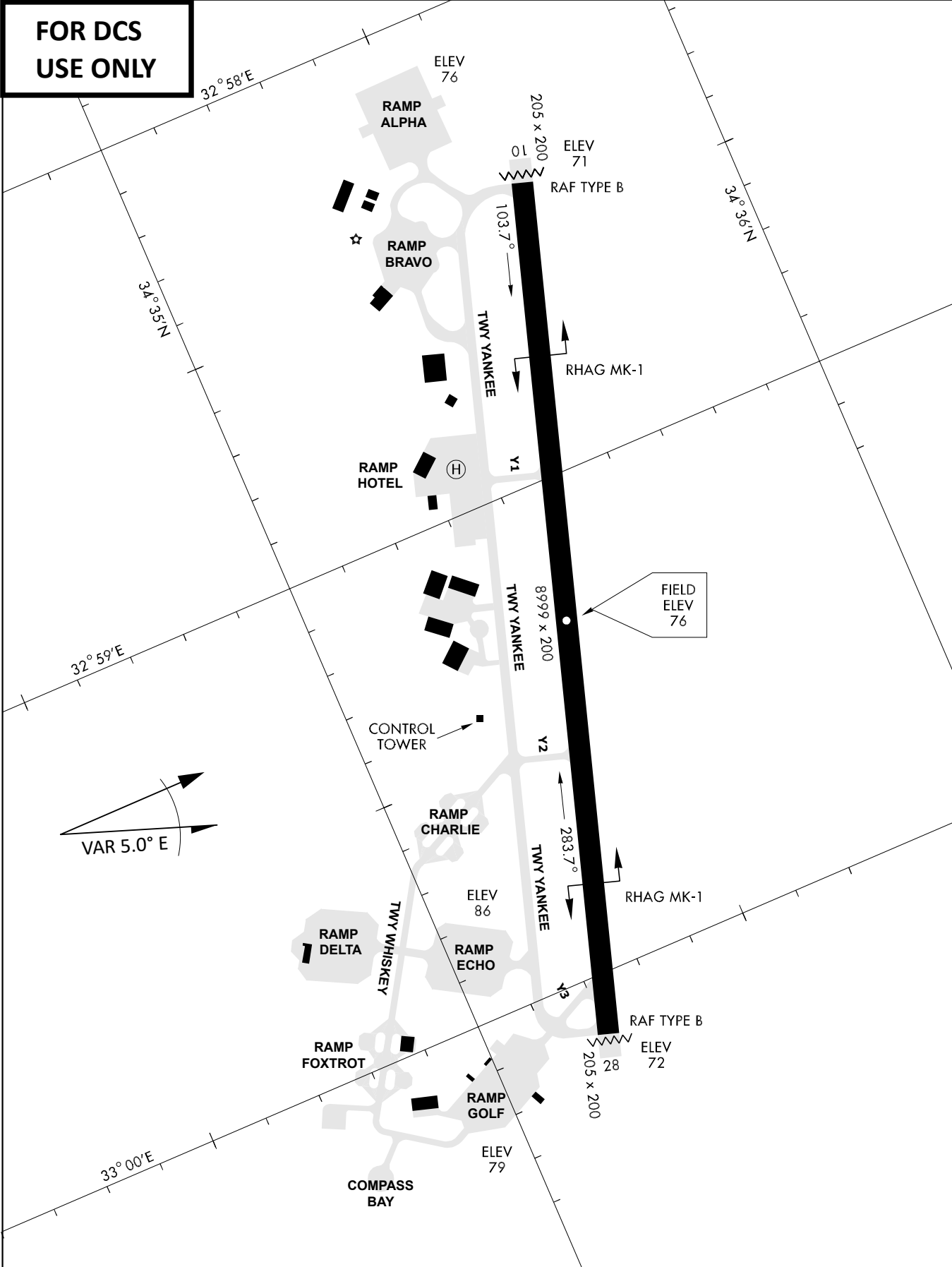
KTC 1400 C

	0	1	2	3	4	5	6	7	8	9
A	RGSX	AJF	KTB	HC	LN	VIM	UY	OP	QE	DW
B	BXDT	GVM	HEY	RJ	NC	FIA	SL	KU	QW	PO
C	DHYO	RWA	UBF	JK	PN	IML	SX	EQ	GC	VT
D	NADO	WTI	JKX	SH	YC	MLG	BE	RQ	UF	PV
E	CDKL	POJ	TVN	AH	RQ	EUX	GW	SY	IB	FM
F	AFBC	RTS	DGP	QJ	IO	KUN	VW	HL	ME	XY
G	SLKN	HDB	YOJ	XT	UF	QAV	IC	WG	MP	RE
H	UJIQ	SWD	AKE	GN	OV	FYX	CH	BT	PL	RM
I	GEIA	TQJ	VDW	PO	US	HCN	BL	XR	FY	MK
J	PTLK	EGA	RQJ	XF	VC	SBY	HU	DO	MI	NW
K	CLTY	OMF	GVD	QB	NU	WIJ	RS	HP	KX	AE
L	QNDK	EFA	JCB	YR	LI	UPO	TX	VG	HM	WS
M	UWJS	XLE	RKB	CI	YF	HQT	DP	GV	ON	MA
N	CHTN	ILA	JOK	RY	SU	VBE	WM	PQ	DG	FX
O	YURS	WTA	DOX	NC	HQ	FJE	LK	VB	MI	GP
P	YFWQ	PGK	EIO	DL	RT	XHN	BJ	UV	CM	AS
Q	SLRM	KYV	TGC	AU	IX	BOE	HN	WJ	PF	QD
R	FYRE	PVJ	NLH	QO	XS	KIG	TU	CB	WM	AD
S	JRUX	NYM	HEI	AG	TL	WCQ	FO	PV	SK	BD
T	FKGW	ASD	ORN	VB	EC	HMQ	LX	PY	JU	IT
U	BSPM	UAQ	TGN	HW	XL	VFO	RC	EI	KY	DJ
V	DCJN	EFR	TXB	IU	AS	GOW	MY	QK	HL	VP
W	VWAT	PNC	BQO	XK	LI	DHR	US	YJ	EF	MG
X	EASY	MNR	DGI	JF	VT	WHP	LO	CQ	BU	KX
Y	UGQA	VFS	RTB	KI	OD	EPN	LC	WY	MX	HJ

NAVAIDS

Id	Name	Channel	Position	Elevation
DAN	Incirlik	21	N37 00.950 E035 26.883	243
AKR	Akrotiri	107	N34 34.765 E032 57.769	147
PHA	Paphos	79	N34 42.997 E032 28.963	35
RMD	Ramat David	84	N32 39.892 E035 11.265	136
OS66	Kuweires Military Aviation Institute	36	N36 11.362 E037 34.226	1200

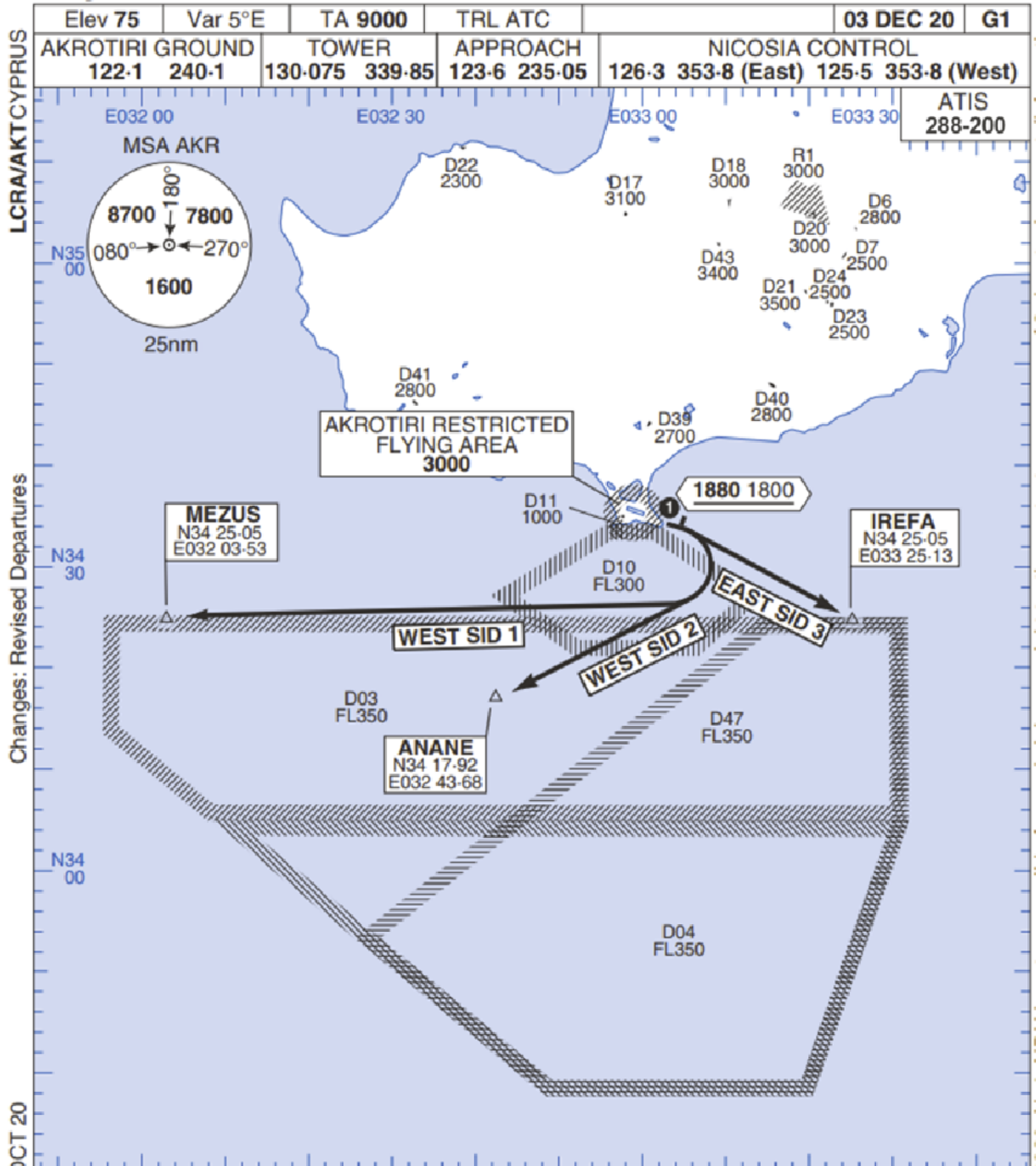
**FOR DCS
 USE ONLY**



ATIS	AKROTIRI GND	AKROTIRI TWR	OVERLORD CONTROL	TACAN	FIELD ELEVATION
288.20 MHz	240.10 122.10	339.85 130.075	377.8	AKR 107X	75 [ft] 23 [m]

Rwy 10 OMNIDIRECTIONAL DEPARTURES

AKROTIRI



Changes: Revised Departures

No1 AIDU Last Amended 06 OCT 20

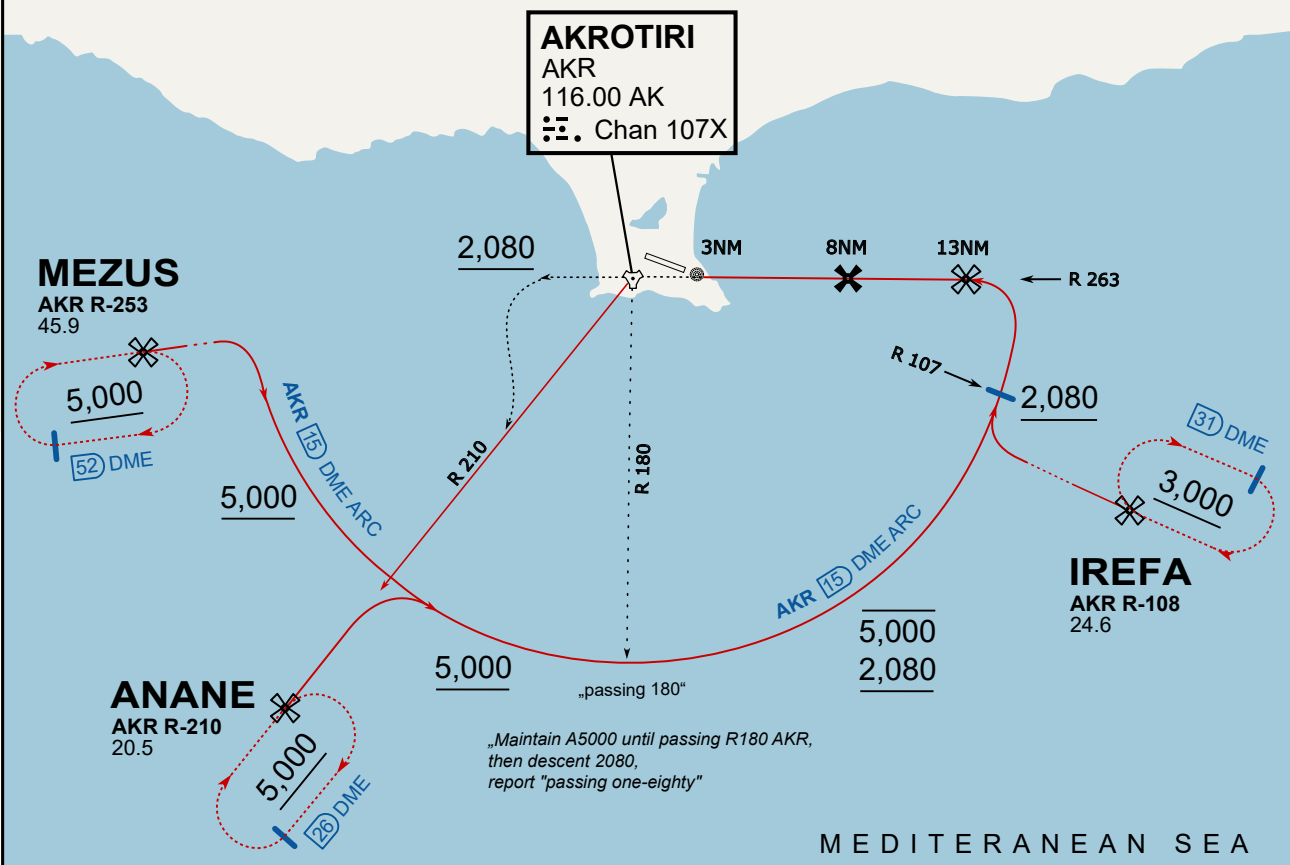
1 Minimum climb gradient 7% to 1880 1800 for obstacle and operational purposes.
 2. No turns before DER.
 3. Turns to north of Rwy **prohibited**.
 4. Acft unable to locate MEZUS/ANANE/IREFA should request radar vectors from ATC.

SID	RWY	ROUTEING (Including Mnm Noise Routes)
WEST SID 1	10 103°M	Ahead on Rwy Tr to 1880 1800, then right direct to MEZUS. SID terminates at 9000.
WEST SID 2		Ahead on Rwy Tr to 1880 1800, then right direct to ANANE. SID terminates at 9000.
EAST SID 3		Ahead on Rwy Tr to 1880 1800 then right direct to IREFA. SID terminates at 9000.

ATIS
 288.200
AKROTIRI GROUND
 122.100
AKROTIRI TOWER
 339.850
APP (OVERLORD)
 377.800

NOT FOR CIVIL USE

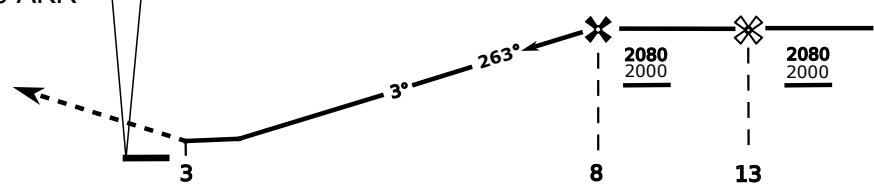
CAUTION: If unable to comply with restrictions advise ATC prior to departure.



On Track 263° climb A 4.000'.
 passing 2.080' (2.000' AAL)
 turn left and intercept R-210 AKR
 to ANANE.
 Enter ANANE Holding.



DME AKR	7	6	5	4
ALT	1780	1460	1140	820



THR Elev 74ft DME AKR

CAT	TAC	CIRCLE	GS (kts)	80	120	150	180	210
A	500(430)	680 (610) 2000m	FAF - MAPt (4.1NM)	3:06	2:03	1:38	1:22	1:10
B	1300m		RoD (fpm)	420	640	800	950	1110
C	780 (710)	780 (710) 3300m	- CIRCLING PROHIBITED N of Rwy - final track is offset 20° right of RCL and Intcp 1.1NM before THR - when established on final contact tower - Timing not Auth to define MAPt					
D	2600m	780 (710) 3600m						
E	1380 (1310)	1380 (1310) 5000m						
	5000m							

