

MISSION DATA CARD

OPORD		Callsign		Mission		Date/Time		
2925/2024		Tiger 7		CAP		232000MAY24		
Task	ATO901					Freq		
AO						265.35		
Departure				Recovery				
CAT				CASE I				
#	Callsign		Pilot		IFF	TCN	LSR	NET
-1	Tiger 7-1		Hawk		1071	1Y	1551	

LOADOUT

A/A	2xA9X, 5xA120C				GUN	100% HEI-T	
A/G					CHF	120	
POD	TGP				FLR	0	
TKS	3xFPU-8A				FUEL	100%	

TOLD

	Takeoff	Target	Joker	Bingo	Land
FUEL	17535		8800	3800	

AIRBASES

	Name	TCN	ATIS	GND	TWR	RWY	Elev	ILS
Dep	CVN-73 USS G. Washington	55X		ICLS 12	304.0			
Arr	CVN-73 USS G. Washington	55X		ICLS 12	304.0			
Div	Akrotiri AFB	107X	288.2	240.1	339.85	28	62	109.7

FLIGHTPLAN

#	Name	Navaid/Coords/DME	ALT	TOT
1	1	N32 48 41.753 E034 59 14.062	26000	
2	CAP WHISKEY	N32 52 42.310 E035 05 36.906	26000	
3	CAP WHISKEY	N32 52 55.244 E035 23 27.820	26000	
4	CAP SIERRA	N32 18 42.186 E035 45 00.706	26000	
5	CAP SIERRA	N32 29 15.834 E035 57 37.133	26000	

COMMS

Radio	Usage
1	12,16,12
2	265.35
3	MIDS A 23, B 44

SUPPORT**Tanker**

Callsign	TCN	Freq	ALT	TAS
ARCO 2	41Y	360.8	FL220	400
	Pos	ARCO2: (N3653 E03452)		
TEXACO 2	44Y	244.78	FL150	250
	Pos	TEXACO2: (N3424 E03403)		

AWACS

Callsign	Freq	ALT	Pos
OVERLORD2	377.8	FL320	N3713 E03643 - N3714 E03749

OTHER FLIGHTS

Callsign	Mission	Airframe	Freq	TCN	Grpld	Laser
Nazgul 6	Strike	4x F-15E	262.45	1/64	40	166X
AO	Damascus	Task	ATO 903 - 0B5			
Panther 5	Training	2x F/A-18C	261.35	1/64		157X
AO		Task				
Tiger 1	Training	3x F/A-18C	261.15	11/74	1	161X
AO	Syria 20B25	Task	SEAD / ATO 903			
Hawg 1	Strike	3x A-10C	232.85	29/92	33	166X
AO		Task	ATO903			
Monster 1	Training	4x A-10C	132.15	1/64	21	161X
AO	ATO 903	Task	Strike Bunker containing SCUD, Drones			
Outlaw 6	Strike	2x AH-64D	133.5	1/64		170X
AO		Task	ATO904			
Raptor 1	SEAD	4x F-16C	134.0	1/64		162X
AO		Task	ATO 902			
Raptor 2	DEAD	4x F-16C	134.0	1/64		162X
AO		Task	ATO 902			
Edelweiss 1	Training	1x F-16C	264.15	11/74		171X
AO		Task				

RADIO CHANNELS

#	Freq	Name
1		Flight/Squadron specific
2	288.2	Akrotiri ATIS
3	240.1	Akrotiri Ground
4	339.85	Aktrotiri Tower
5	335.05	Akrotiri Approach
6	360.1	Incirlik Tower
7	371.35	Incirlik Ground
8	377.475	Incirlik ATIS
9		No Preset
10	127.3	Paphos ATIS
11	353.8	Paphos Tower
12	304.0	CVN-73 George Washington
13	302.0	LHA-1 Tarawa
14	259.0	CV-59 Forrestal
15		No Preset
16	377.8	Overlord
17	265.0	KC-135 Texaco-1 medium/slow
18	319.8	KC-135 Arco-1
19	360.8	KC-135MPRS Arco-2
20	256.0	S-3B Recovery Tanker

RAMROD

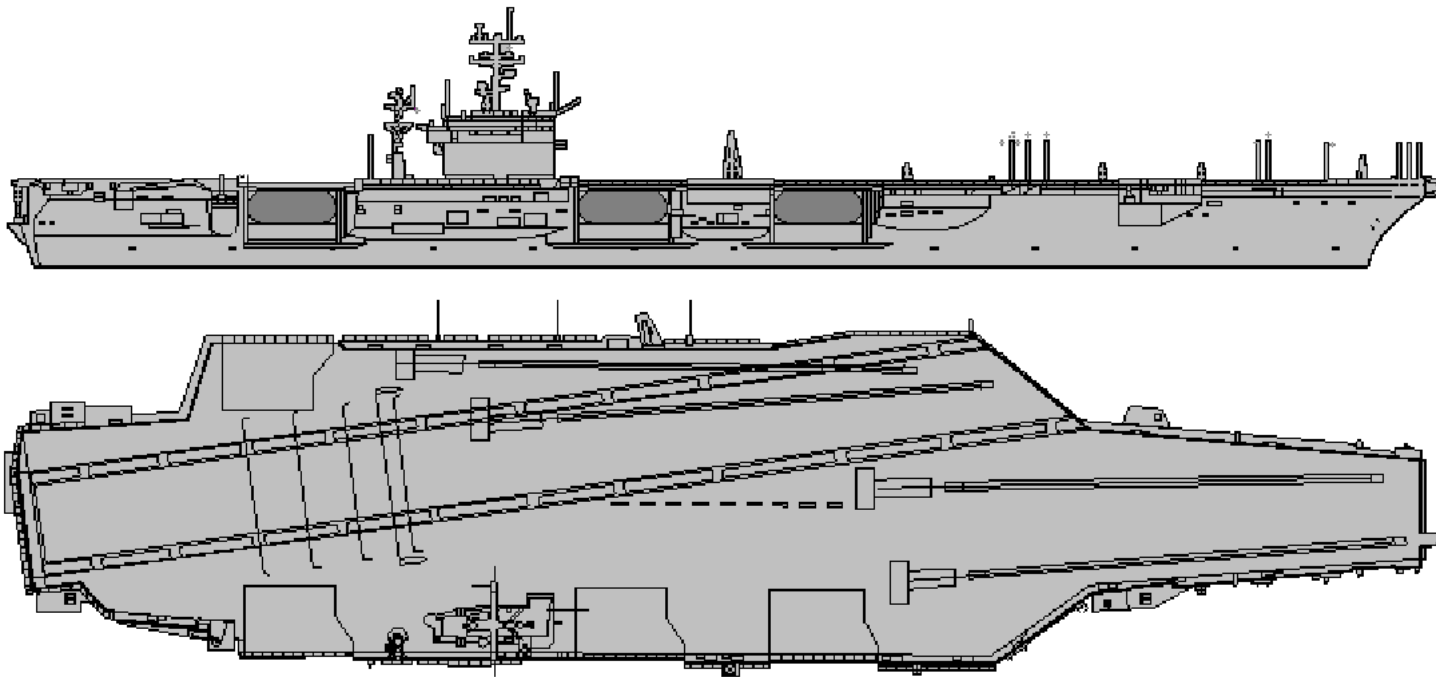
0	1	2	3	4	5	6	7	8	9
L	O	V	E	M	A	K	I	N	G

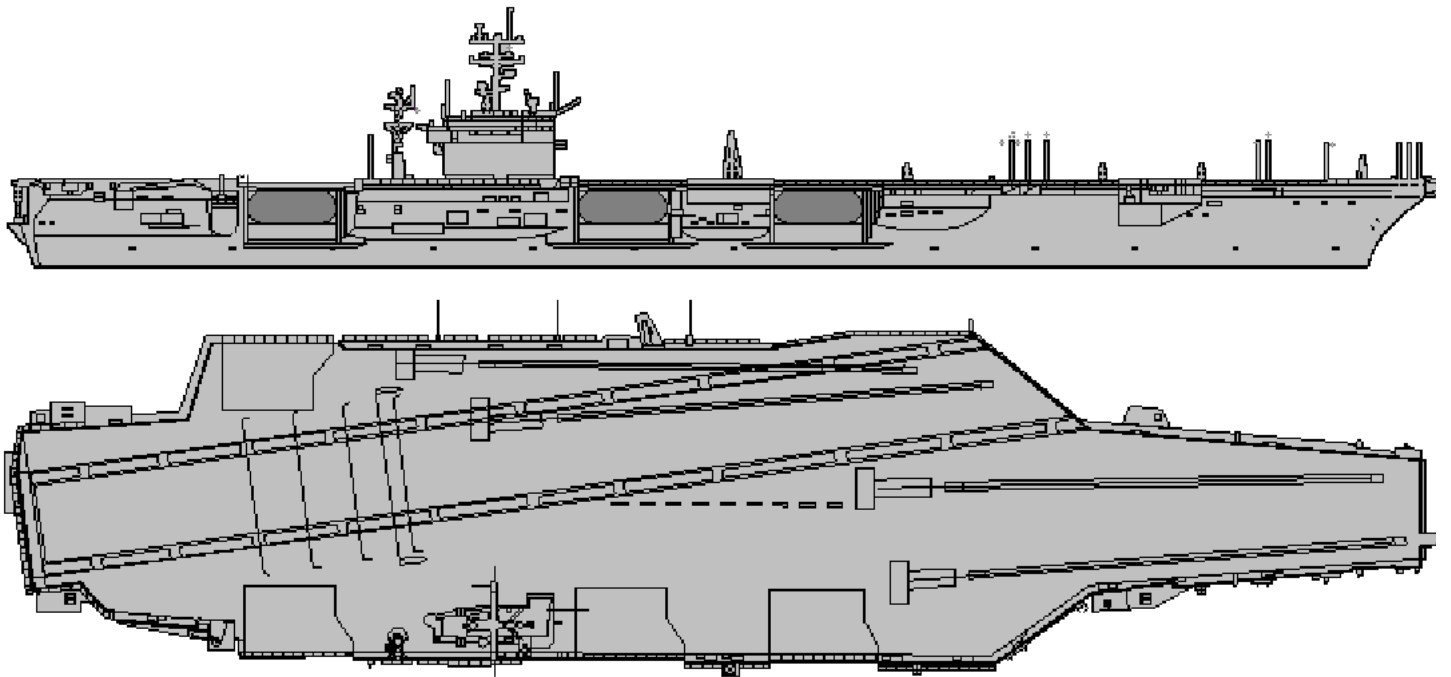
KTC 1400 C

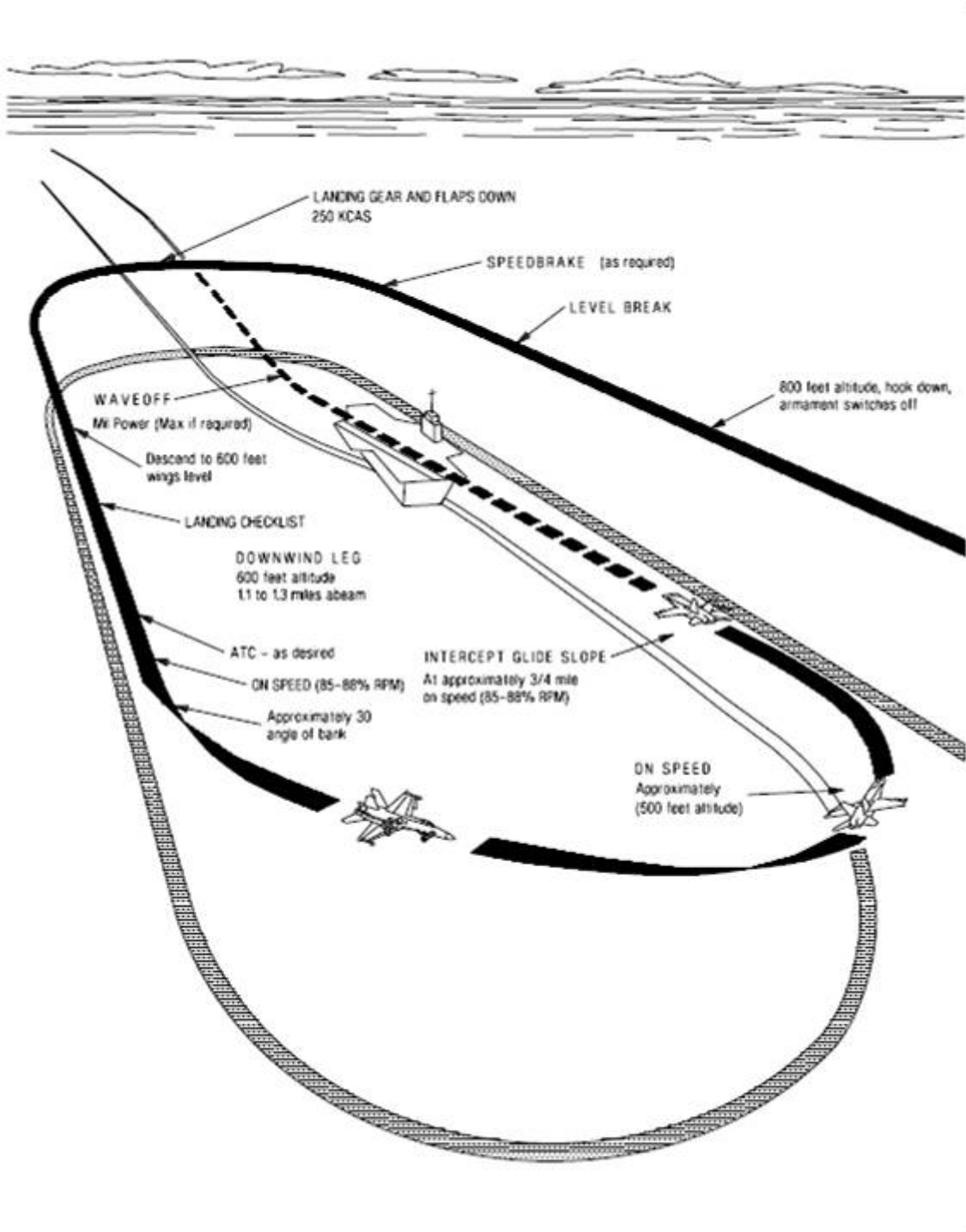
	0	1	2	3	4	5	6	7	8	9
A	LXKF	RAM	DJV	SB	NE	YCI	PT	WG	HO	UQ
B	ALKT	MBD	FXW	YE	PU	QCJ	RH	GV	IS	ON
C	YKAJ	GUI	FSL	OD	QX	MHT	ER	BN	WV	PC
D	BDPS	XWH	QLC	AR	VM	NOU	FK	EG	IJ	TY
E	HAQD	WTU	OCE	LR	JF	BXV	MY	NK	IP	GS
F	XFHW	PVK	LDC	YB	UT	IEG	RJ	NS	QA	OM
G	GQUF	DNM	WRS	BH	IJ	ETK	LO	CA	VX	YP
H	PGAB	LKN	RCD	XW	JY	UQV	SH	TI	FO	ME
I	RLGE	TOW	VHJ	KF	XC	MID	UA	BN	PY	SQ
J	MQDG	SJI	UVA	TN	KW	RYH	CX	PE	OL	BF
K	GCDQ	IHJ	BRP	WN	AO	UYS	FE	LT	VX	MK
L	LBND	KOU	GYF	WP	CR	QET	HA	JX	IM	VS
M	VLUF	OJG	WIN	HC	MD	YAP	XK	QR	TS	BE
N	SYOE	ADF	LVU	QN	HW	TIB	PX	CR	MG	JK
O	FSRN	BXJ	LDE	HK	UW	AVC	OQ	YM	PT	GI
P	CMIH	PDK	XVS	GY	TN	QFB	RW	EL	AO	UJ
Q	UDIP	JWA	CRO	MB	HN	QVF	GS	XL	ET	YK
R	CBXH	LQO	TGV	NM	IE	KRP	UA	YS	FJ	WD
S	BUMC	PGA	WOT	KR	QJ	SXN	FD	IH	LE	YV
T	DGLV	MKH	TCU	NF	XB	PJS	YE	RA	IO	QW
U	ABFX	VKO	IPS	HE	DR	LMW	YN	TG	JQ	CU
V	UPQX	LRD	VEF	GI	NT	MSC	OK	WJ	HB	AY
W	DWPC	HGK	BUL	OF	EA	YRN	JQ	TI	MX	SV
X	RIFJ	DPO	YAU	GM	EW	LHS	CV	XQ	KB	NT
Y	RXCK	QJY	HVG	IF	TW	BND	ES	UP	AO	ML

NAVAIDS

Id	Name	Channel	Position	Elevation
DAN	Incirlik	21	N37 00.950 E035 26.883	243
AKR	Akrotiri	107	N34 34.765 E032 57.769	147
PHA	Paphos	79	N34 42.997 E032 28.963	35
RMD	Ramat David	84	N32 39.892 E035 11.265	136
OS66	Kuweires Military Aviation Institute	36	N36 11.362 E037 34.226	1200



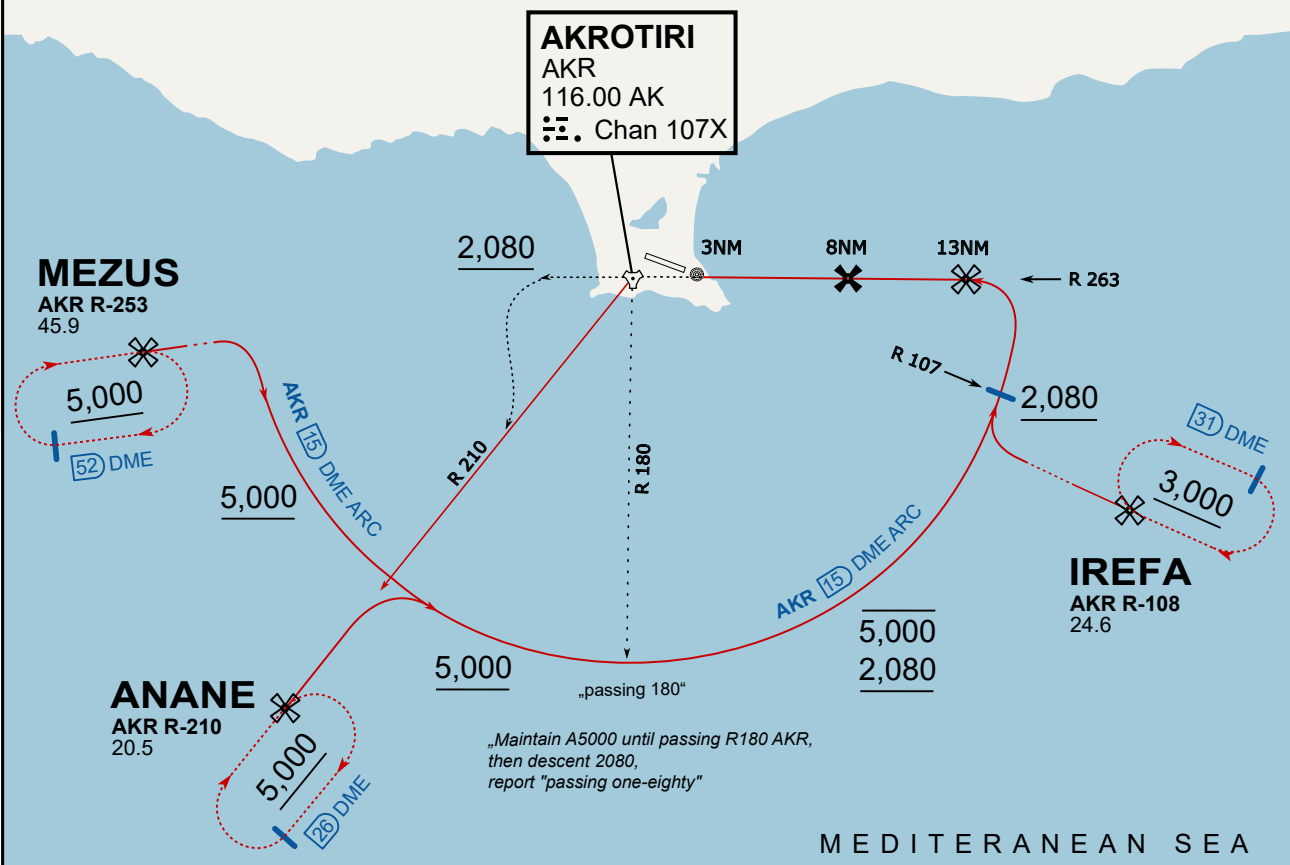




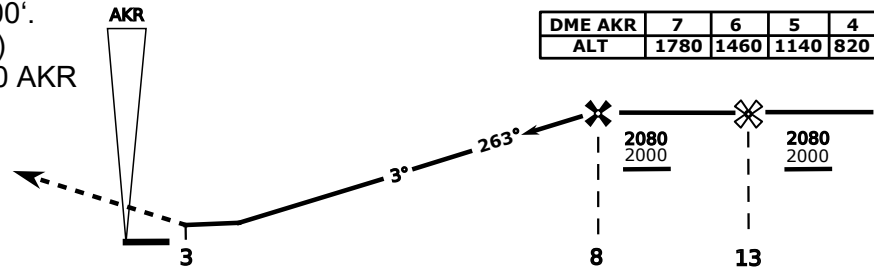
ATIS
288.200
AKROTIRI GROUND
122.100
AKROTIRI TOWER
339.850
APP (OVERLORD)
377.800

NOT FOR CIVIL USE

CAUTION: If unable to comply with restrictions advise ATC prior to departure.

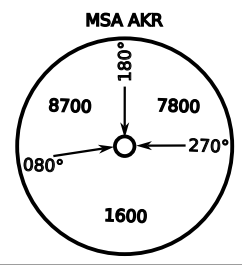


On Track 263° climb A 4.000'.
passing 2.080' (2.000' AAL)
turn left and intercept R-210 AKR
to ANANE.
Enter ANANE Holding.

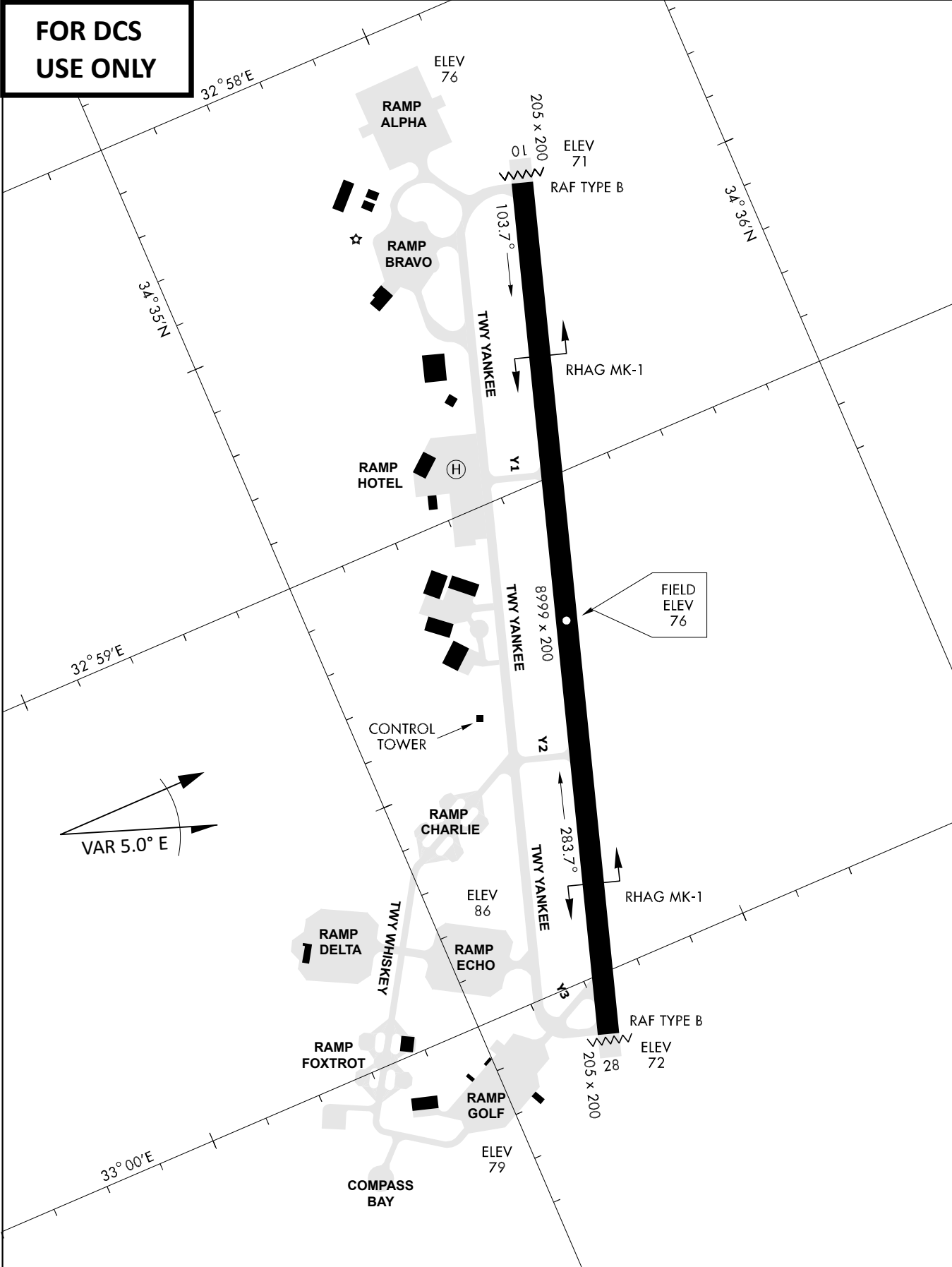


DME AKR	7	6	5	4
ALT	1780	1460	1140	820

CAT	TAC	CIRCLE	GS (kts)					
			80	120	150	180	210	
A	500(430)	N/A	680 (610) 2000m	3:06	2:03	1:38	1:22	1:10
B	1300m		780 (710) 3300m	420	640	800	950	1110
C	780 (710) 2600m		780 (710) 3600m	- CIRCLING PROHIBITED N of Rwy				
D			1380 (1310) 5000m	- final track is offset 20° right of RCL and Intcp 1.1NM before THR				
E	1380 (1310) 5000m		1380 (1310) 5000m	- when established on final contact tower				
			- Timing not Auth to define MAPt					



**FOR DCS
 USE ONLY**



ATIS	AKROTIRI GND	AKROTIRI TWR	OVERLORD CONTROL	TACAN	FIELD ELEVATION
288.20 MHz	240.10 122.10	339.85 130.075	377.8	AKR 107X	75 [ft] 23 [m]