

MISSION DATA CARD

OPORD		Callsign		Mission		Date/Time	
2924/2024		Nazgul 6		BAI		202000MAY24	
Task	Buddy Lasing Training					Freq	
AO	Akamas Bomb Range					262.45	
Departure				Recovery			
RWY28 VFR				RWY10 VFR			
#	Callsign	Pilot		IFF	TCN	LSR	NET
-1	Nazgul 6-1	Striver		1161	1Y	1561	
-2	Nazgul 6-2	Tank		1162	64Y	1562	
-3	Nazgul 6-3	Razorback		1163	64X	1563	

LOADOUT

A/A	2xA120C, 2xA9M				GUN	100% SAPHEI
A/G	8xG12, G24				CHF	120
POD	TGT, NAV				FLR	60
TKS	2xFT610				FUEL	100%

TOLD

	Takeoff	Target	Joker	Bingo	Land
FUEL	30518				

AIRBASES

	Name	TCN	ATIS	GND	TWR	RWY	Elev	ILS
Dep	Akrotiri AFB	107X	288.2	240.1	339.85	28	62	109.7
Arr	Akrotiri AFB	107X	288.2	240.1	339.85	28	62	109.7

FLIGHTPLAN

#	Name	Navaid/Coords/DME	ALT	TOT
1	ECHO	N34 42.600 E033 10		
2	LAKE	N34 45.150 E032 55.400		
3	IP	N35 09 E032 26	5000	
4	Orbit	N35 05 E032 23	20000	
5	AKB.T1	N35 04.371 E032 19.093	79	
6	AKB.T2	N35 04.371 E032 18.086	587	
7	AKB.T3	N35 04.737 E032 18.030	427	
8	AKB.T4	N35 04.971 E032 18.182	154	
9	AKB.T5	N35 05.038 E032 17.629	381	

NOTES

Standoff orbit attack:

Eyeball A20 on Orbit

Shooter A5 on IP

Eyeball give command, consider timing

Shooter run in and toss bomb -> Safe escape (60 ° OFF)

Eyeball lase

Deadeye single pass attack:

Eyeball A5, Shooter A4, both on IP, Combat Spread

Eyeball transfer target point and fly towards

Eyeball give command

Shooter drop at appropriate time (Toss) -> Safe escape (60 ° OFF)

Eyeball lase and orbit target

Eyeball command second attack

Shooter run in and toss bomb

Eyeball lase

Eyeball communicate egress heading

Shooter Rejoin

OTHER FLIGHTS

Callsign	Mission	Airframe	Freq	TCN	Grpld	Laser
Claw 3	Training	4x AH-64D	133.5	1/64		152X
AO		Task				
Edelweiss 1	Training	2x F-16C	134.0	10/73		171X
AO		Task				
Tiger 1	Training	2x F/A-18C	261.15	1/64		155X
AO		Task				

RADIO CHANNELS

#	Freq	Name
1		Flight/Squadron specific
2	288.2	Akrotiri ATIS
3	240.1	Akrotiri Ground
4	339.85	Aktrotiri Tower
5	335.05	Akrotiri Approach
6	360.1	Incirlik Tower
7	371.35	Incirlik Ground
8	377.475	Incirlik ATIS
9		No Preset
10	127.3	Paphos ATIS
11	353.8	Paphos Tower
12	304.0	CVN-73 George Washington
13	302.0	LHA-1 Tarawa
14	259.0	CV-59 Forrestal
15		No Preset
16	377.8	Overlord
17	265.0	KC-135 Texaco-1 medium/slow
18	319.8	KC-135 Arco-1
19	360.8	KC-135MPRS Arco-2
20	256.0	S-3B Recovery Tanker

RAMROD

0	1	2	3	4	5	6	7	8	9
P	A	C	H	Y	D	E	R	M	S

KTC 1400 C

	0	1	2	3	4	5	6	7	8	9
A	UJDC	KSM	PBO	YW	EF	RVT	QH	XN	GI	LA
B	VPOK	ECY	XSD	IG	FA	MHU	NB	RL	WQ	TJ
C	VWGU	BPH	AED	QC	RO	KJN	YL	XF	TS	IM
D	XFVP	THC	NDS	KI	OU	BQR	EM	LJ	AW	GY
E	OEWU	YJC	ITM	XV	KB	GSD	QR	AL	PH	NF
F	CQJI	HUF	BSP	XG	AL	OVN	RT	EK	WN	YD
G	HODS	UCA	PNE	JV	BF	MWL	QX	KI	GR	YT
H	YVCF	TNQ	ARD	IO	MH	LUK	XG	BP	SW	JE
I	MCAV	UPN	YIG	QE	JF	RWS	TO	XB	KD	HL
J	CRUG	HPB	FKL	QE	AW	XVS	JI	YN	MT	OD
K	JDIX	OKL	RMW	VU	PQ	BTF	YG	EC	SH	AN
L	QVCK	RND	WOJ	FS	TL	XEU	AB	YH	GI	MP
M	MXND	KLS	BYV	FT	HW	REQ	OI	JG	CU	PA
N	ADLV	YHG	TIC	SR	XM	NEU	BQ	WJ	PK	FO
O	HFGB	MUK	ITD	XP	VL	NQE	RY	JC	SW	OA
P	IMBT	VAP	DWF	CJ	XU	YNO	SK	QG	HE	LR
Q	QLMU	ROD	KNC	ES	FP	HAI	JG	YV	XT	BW
R	YIXE	UNG	THW	SJ	LR	AOB	VP	MF	DQ	CK
S	VKPY	UNG	RSQ	CA	OJ	HWM	TX	BF	DE	IL
T	KVDR	YGX	AFJ	BO	TN	WEQ	MP	LI	SH	CU
U	IGCQ	LPV	BXA	SY	NW	HDK	TF	UR	EM	JO
V	QOKB	LYM	GCR	VD	SW	JIN	HA	UE	FP	TX
W	QRDP	NCA	STL	IJ	FE	OHW	MY	VX	UB	KG
X	QHGD	YJS	MTF	BA	VP	ENI	XO	CW	UL	RK
Y	UNMS	VQR	LKF	CG	EB	WXD	JO	AI	YP	TH

NAVAIDS

Id	Name	Channel	Position	Elevation
DAN	Incirlik	21	N37 00.950 E035 26.883	243
AKR	Akrotiri	107	N34 34.765 E032 57.769	147
PHA	Paphos	79	N34 42.997 E032 28.963	35
RMD	Ramat David	84	N32 39.892 E035 11.265	136
OS66	Kuweires Military Aviation Institute	36	N36 11.362 E037 34.226	1200

**FOR DCS
 USE ONLY**

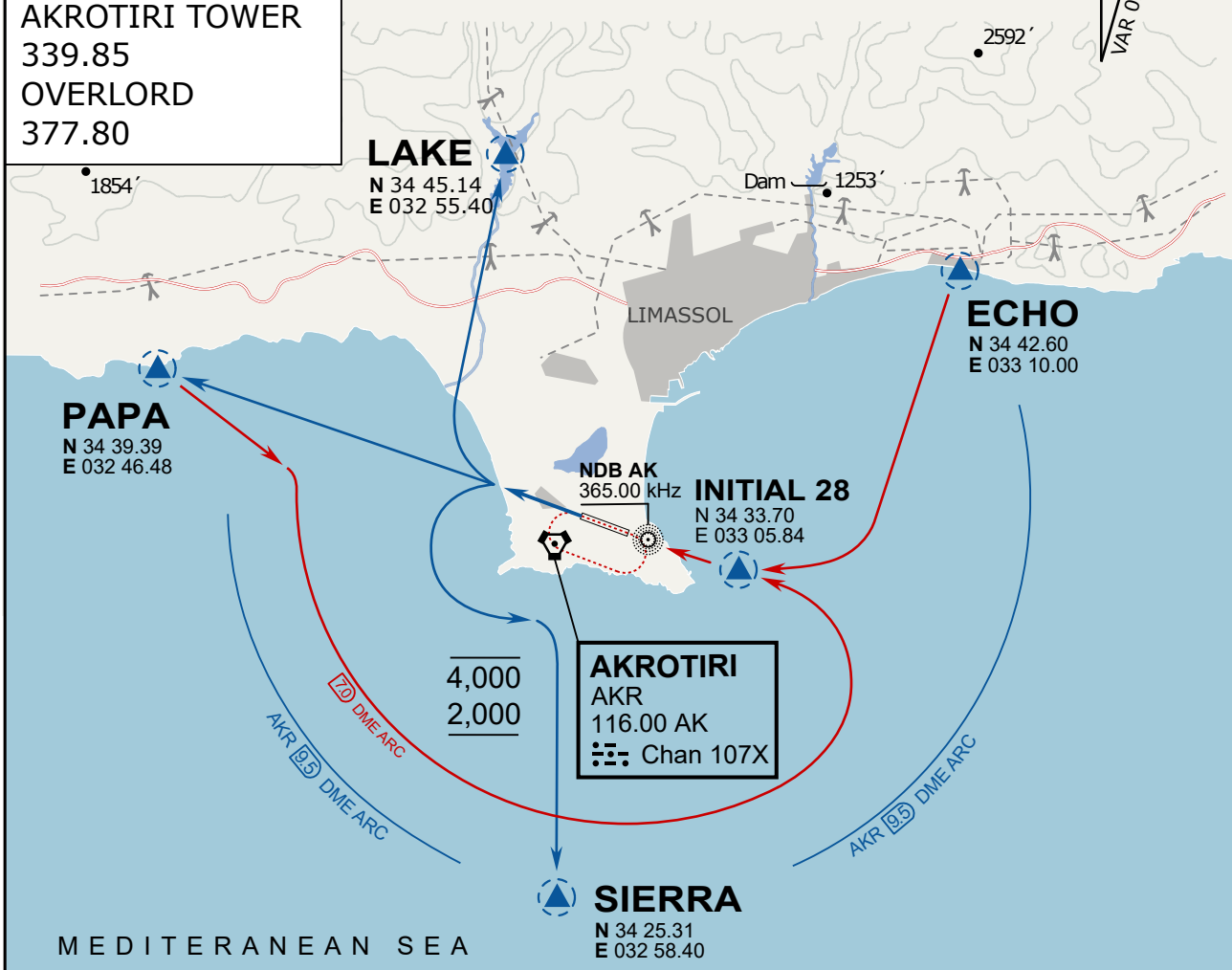


ATIS	AKROTIRI GND	AKROTIRI TWR	OVERLORD CONTROL	TACAN	FIELD ELEVATION
288.20 MHz	240.10 122.10	339.85 130.075	377.8	AKR 107X	75 [ft] 23 [m]

ATIS
 288.20
 AKROTIRI GROUND
 240.10
 AKROTIRI TOWER
 339.85
 OVERLORD
 377.80

NOT FOR CIVIL USE

CAUTION: If unable to comply
 with restrictions advise ATC
 prior to departure.



ARR / DEP ROUTE DESCRIPTION

STRAIGHT-IN RWY28

Pass ENTRY at 5.000' MSL or below, pass INITIAL at 1.500' MSL or below.

OVERHEAD BREAK RWY28

Pass ENTRY at 5.000' MSL or below, pass INITIAL at 2.000' MSL, break to the south.

DEPARTURE GENERAL

Pass Departure end of runway at 1.000' or below.

DEP RWY28 PAPA: Fly straight ahead to exit.

DEP RWY28 LAKE: Fly straight ahead until coast, than right turn direct exit.

DEP RWY28 SIERRA: Fly straight ahead until coastline, then climbing left turn, intercept AKR R-180 to exit.

DEP ECHO: no exit.

ATIS
288.20
AKROTIRI GROUND
240.10
AKROTIRI TOWER
339.85
OVERLORD
377.80

NOT FOR CIVIL USE

CAUTION: If unable to comply with restrictions advise ATC prior to departure.



MEDITERRANEAN SEA

ARR / DEP ROUTE DESCRIPTION

ARRIVAL GENERAL

Pass Entry at 5.000' or below. Overhead Brake RWY 10: pass INITIAL 10 at 2.000' MSL. Straight-in RWY 10 : pass INITIAL 1.500' or below.

ARR RWY10 PAPA / LAKE: Direct initial.

ARR RWY10 SIERRA: Intercept ARC 7 of AKR to INITIAL 10.

ARR ECHO: no ENTRY.

DEPARTURE GENERAL

Pass Departure end of runway at 1.000' AGL or below. Keep RWY heading until coastline.

DEP RWY10 ECHO: Direct EXIT.

DEP RWY10 SIERRA: Climbing right turn, intercept R180 AKR to Sierra.

DEP RWY10 PAPA: Climbing right turn until R180 AKR, then direct Papa

DEP LAKE: no EXIT.