

**MISSION DATA CARD**

OPORD		Callsign		Mission		Date/Time	
2923/2024		Tiger 1		Training		202012MAY24	
Task						Freq	
AO						261.15	
Departure				Recovery			
CAT				CASE I			
#	Callsign	Pilot		IFF	TCN	LSR	NET
-1	Tiger 1-1	Kosmoss		1011	1Y	1551	

**LOADOUT**

A/A	2xA9X, A120C				GUN	100% HEI-T	
A/G	4xM82				CHF	30	
POD	TGP				FLR	90	
TKS	2xFPU-8A				FUEL	100%	

**TOLD**

	Takeoff	Target	Joker	Bingo	Land
FUEL	15291			4500	

**AIRBASES**

	Name	TCN	ATIS	GND	TWR	RWY	Elev	ILS
Dep	CVN-73 USS G. Washington	55X		ICLS 12	304.0			
Arr	CVN-73 USS G. Washington	55X		ICLS 12	304.0			
Div	Akrotiri AFB	107X	288.2	240.1	339.85	28	62	109.7

## FLIGHTPLAN

#	Name	Navaid/Coords/DME	ALT	TOT
1	BOMBCIRCLE EAST	N34 57.009 E033 52.153	131	
2	STRAFE PIT WEST	N34 57.085 E033 51.111	250	

**OTHER FLIGHTS**

Callsign	Mission	Airframe	Freq	TCN	Grpld	Laser
Claw 3	Training	4x AH-64D	133.5	1/64		152X
AO		Task				
Edelweiss 1	Training	2x F-16C	134.0	10/73		171X
AO		Task				
Nazgul 6	BAI	4x F-15E	262.45	1/64		156X
AO	Akamas Bomb Range	Task	Buddy Lasing Training			

**RADIO CHANNELS**

#	Freq	Name
1		Flight/Squadron specific
2	288.2	Akrotiri ATIS
3	240.1	Akrotiri Ground
4	339.85	Aktrotiri Tower
5	335.05	Akrotiri Approach
6	360.1	Incirlik Tower
7	371.35	Incirlik Ground
8	377.475	Incirlik ATIS
9		No Preset
10	127.3	Paphos ATIS
11	353.8	Paphos Tower
12	304.0	CVN-73 George Washington
13	302.0	LHA-1 Tarawa
14	259.0	CV-59 Forrestal
15		No Preset
16	377.8	Overlord
17	265.0	KC-135 Texaco-1 medium/slow
18	319.8	KC-135 Arco-1
19	360.8	KC-135MPRS Arco-2
20	256.0	S-3B Recovery Tanker

**RAMROD**

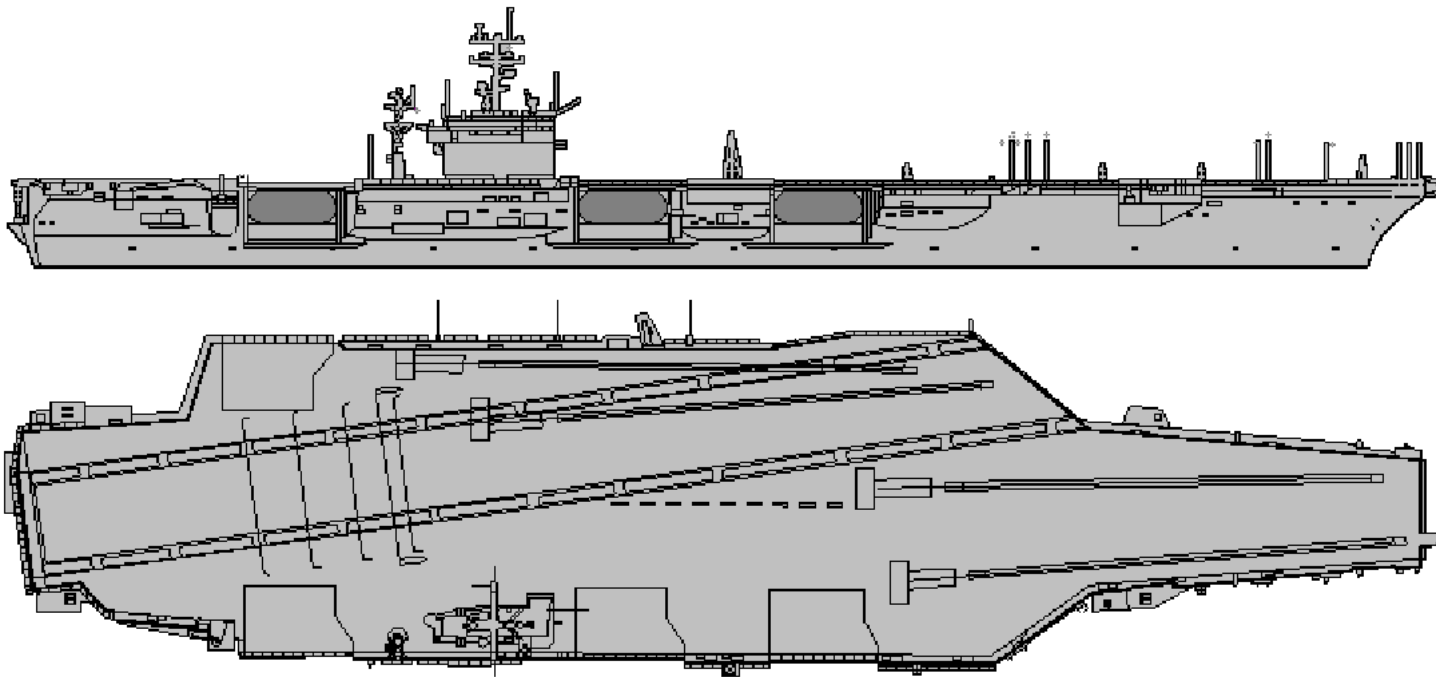
0	1	2	3	4	5	6	7	8	9
P	A	C	H	Y	D	E	R	M	S

**KTC 1400 C**

	0	1	2	3	4	5	6	7	8	9
A	UJDC	KSM	PBO	YW	EF	RVT	QH	XN	GI	LA
B	VPOK	ECY	XSD	IG	FA	MHU	NB	RL	WQ	TJ
C	VWGU	BPH	AED	QC	RO	KJN	YL	XF	TS	IM
D	XFVP	THC	NDS	KI	OU	BQR	EM	LJ	AW	GY
E	OEWU	YJC	ITM	XV	KB	GSD	QR	AL	PH	NF
F	CQJI	HUF	BSP	XG	AL	OVN	RT	EK	WN	YD
G	HODS	UCA	PNE	JV	BF	MWL	QX	KI	GR	YT
H	YVCF	TNQ	ARD	IO	MH	LUK	XG	BP	SW	JE
I	MCAV	UPN	YIG	QE	JF	RWS	TO	XB	KD	HL
J	CRUG	HPB	FKL	QE	AW	XVS	JI	YN	MT	OD
K	JDIX	OKL	RMW	VU	PQ	BTF	YG	EC	SH	AN
L	QVCK	RND	WOJ	FS	TL	XEU	AB	YH	GI	MP
M	MXND	KLS	BYV	FT	HW	REQ	OI	JG	CU	PA
N	ADLV	YHG	TIC	SR	XM	NEU	BQ	WJ	PK	FO
O	HFGB	MUK	ITD	XP	VL	NQE	RY	JC	SW	OA
P	IMBT	VAP	DWF	CJ	XU	YNO	SK	QG	HE	LR
Q	QLMU	ROD	KNC	ES	FP	HAI	JG	YV	XT	BW
R	YIXE	UNG	THW	SJ	LR	AOB	VP	MF	DQ	CK
S	VKPY	UNG	RSQ	CA	OJ	HWM	TX	BF	DE	IL
T	KVDR	YGX	AFJ	BO	TN	WEQ	MP	LI	SH	CU
U	IGCQ	LPV	BXA	SY	NW	HDK	TF	UR	EM	JO
V	QOKB	LYM	GCR	VD	SW	JIN	HA	UE	FP	TX
W	QRDP	NCA	STL	IJ	FE	OHW	MY	VX	UB	KG
X	QHGD	YJS	MTF	BA	VP	ENI	XO	CW	UL	RK
Y	UNMS	VQR	LKF	CG	EB	WXD	JO	AI	YP	TH

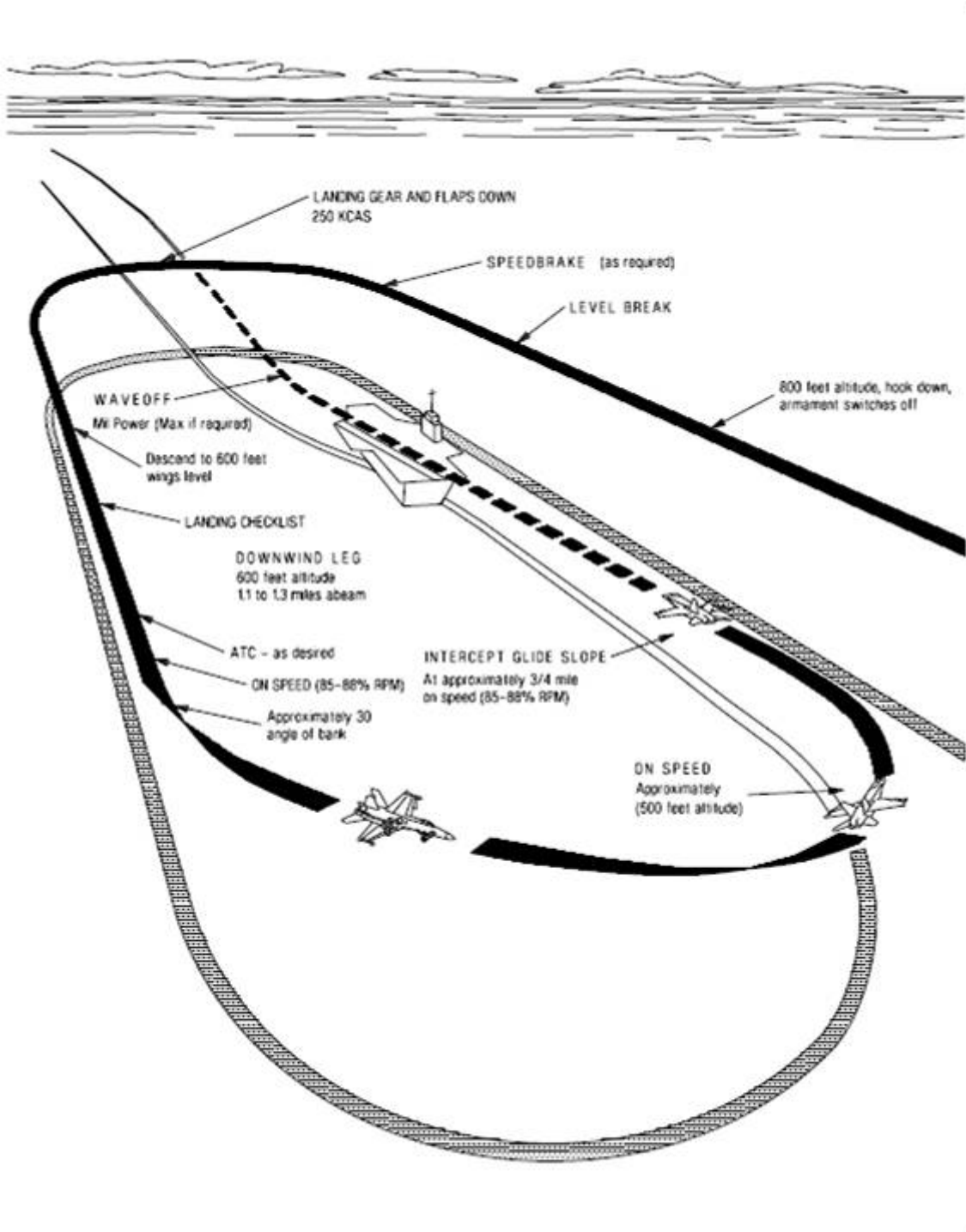
**NAVAIDS**

<b>Id</b>	<b>Name</b>	<b>Channel</b>	<b>Position</b>	<b>Elevation</b>
DAN	Incirlik	21	N37 00.950 E035 26.883	243
AKR	Akrotiri	107	N34 34.765 E032 57.769	147
PHA	Paphos	79	N34 42.997 E032 28.963	35
RMD	Ramat David	84	N32 39.892 E035 11.265	136
OS66	Kuweires Military Aviation Institute	36	N36 11.362 E037 34.226	1200





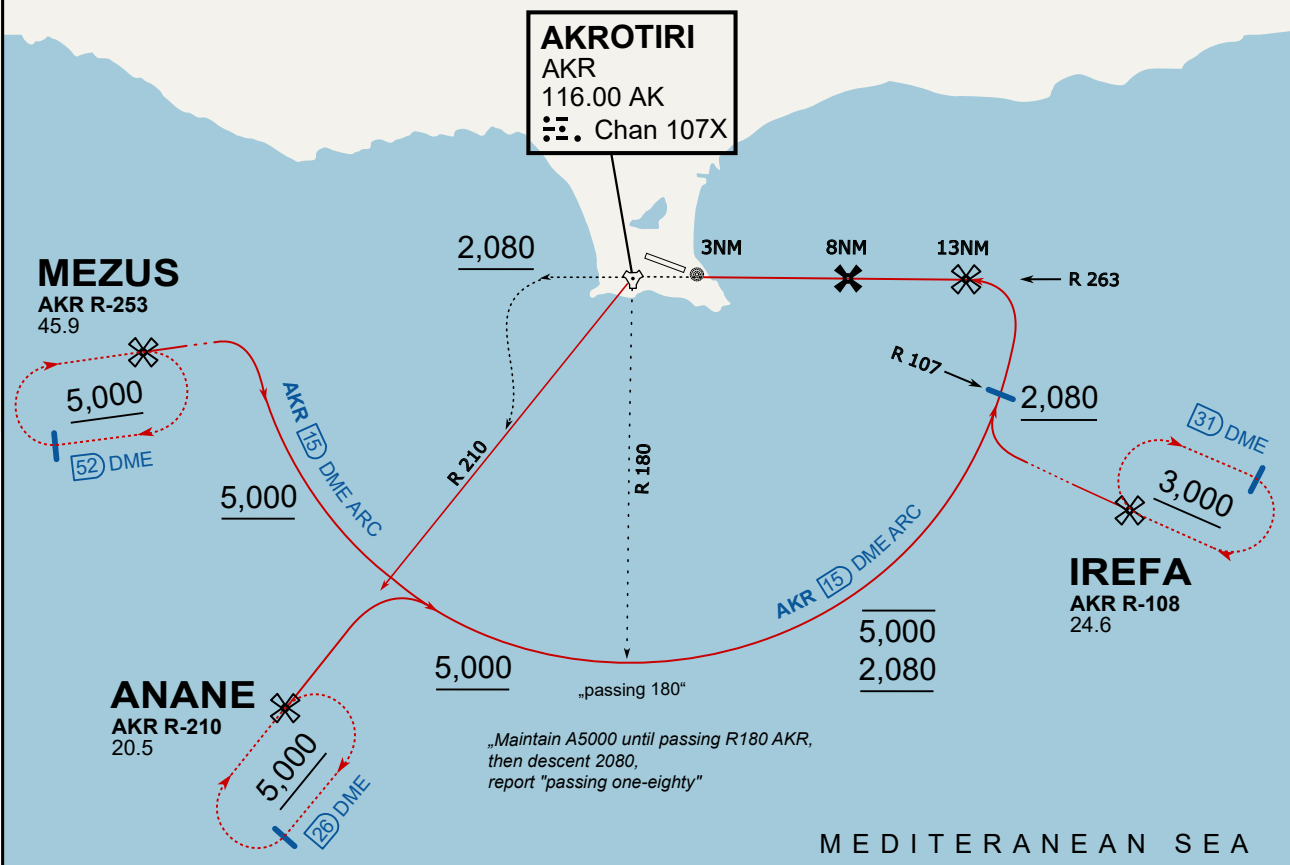




**ATIS**  
 288.200  
**AKROTIRI GROUND**  
 122.100  
**AKROTIRI TOWER**  
 339.850  
**APP (OVERLORD)**  
 377.800

**NOT FOR CIVIL USE**

CAUTION: If unable to comply with restrictions advise ATC prior to departure.



„Maintain A5000 until passing R180 AKR, then descent 2080, report "passing one-eighty"“

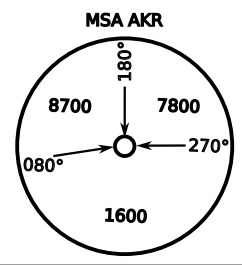
On Track 263° climb A 4.000'. passing 2.080' (2.000' AAL) turn left and intercept R-210 AKR to ANANE. Enter ANANE Holding.



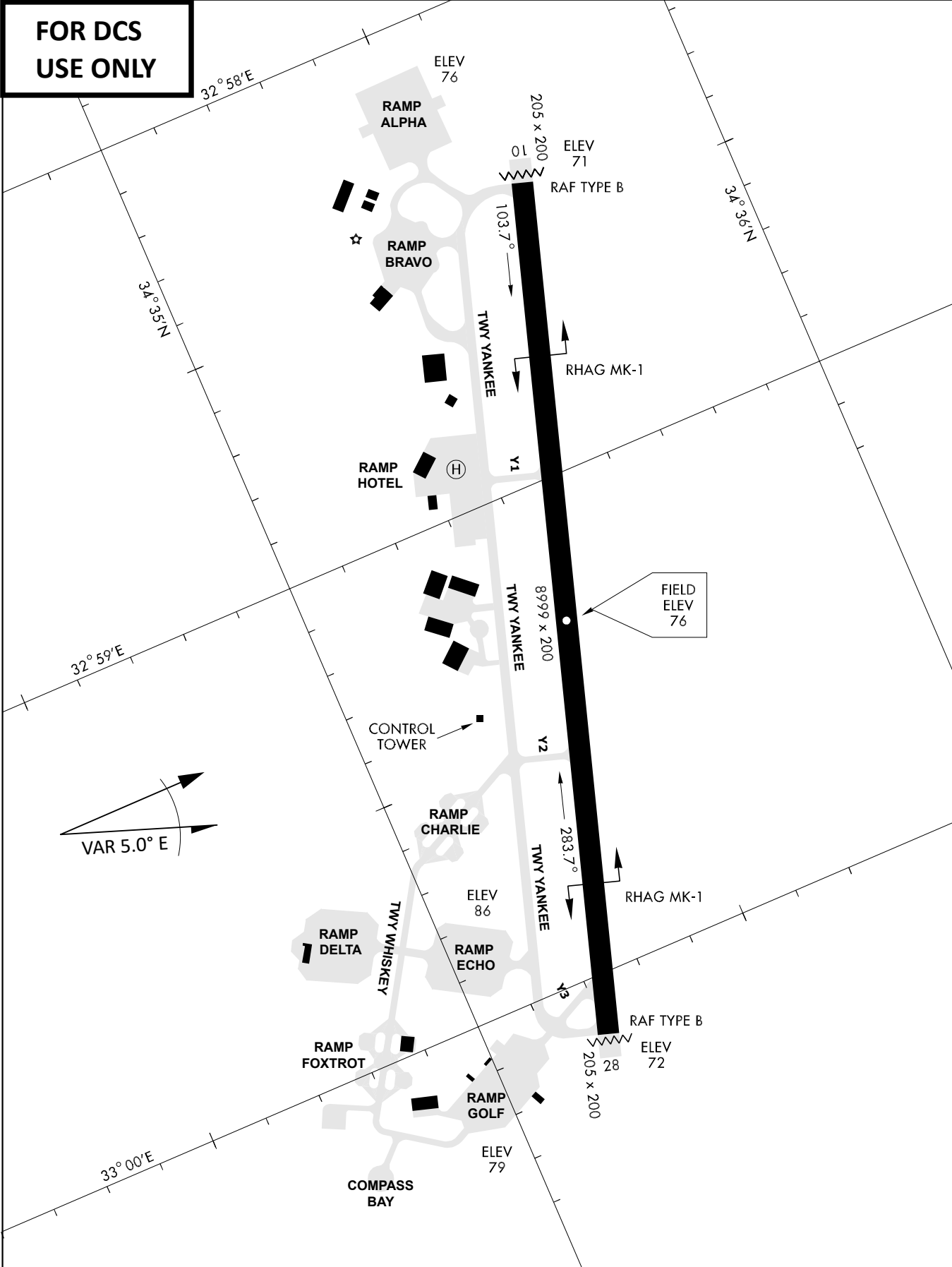
DME AKR	7	6	5	4
ALT	1780	1460	1140	820

THR Elev 74ft DME AKR

CAT	TAC	CIRCLE	GS (kts)	80	120	150	180	210
A	500(430)	680 (610) 2000m	FAF - MAPt (4.1NM)	3:06	2:03	1:38	1:22	1:10
B	1300m		RoD (fpm)	420	640	800	950	1110
C	780 (710)	780 (710) 3300m	- CIRCLING PROHIBITED N of Rwy - final track is offset 20° right of RCL and Intcp 1.1NM before THR - when established on final contact tower - Timing not Auth to define MAPt					
D	2600m	780 (710) 3600m						
E	1380 (1310) 5000m	1380 (1310) 5000m						



**FOR DCS  
 USE ONLY**



ATIS	AKROTIRI GND	AKROTIRI TWR	OVERLORD CONTROL	TACAN	FIELD ELEVATION
288.20 MHz	240.10   122.10	339.85   130.075	377.8	AKR 107X	<b>75 [ft] 23 [m]</b>