

**MISSION DATA CARD**

OPORD		Callsign	Mission	Date/Time		
2916/2024		Hawg 1	Strike	232000MAY24		
Task	ATO903				Freq	
AO					232.85	
Departure			Recovery			
none			none			
#	Callsign	Pilot	IFF	TCN	LSR	NET
-1	Hawg 1-1	vJaBoG66_Yurgon	2711	29Y	1661	33/01
-2	Hawg 1-2	Xtern1	2712	92Y	1662	33/02
-3	Hawg 1-3	vJaBoG66_Borin	2713	92X	1663	33/03

**LOADOUT**

A/A	2xA9M	GUN	100% CM
A/G	7M151L, 2xA65D, 6xM82A	CHF	240
POD	A184L, TGP	FLR	240
TKS		FUEL	80%

**TOLD**

	Takeoff	Target	Joker	Bingo	Land
FUEL	8869				

**AIRBASES**

	Name	TCN	ATIS	GND	TWR	RWY	Elev	ILS
Dep	King Abulla II. AFB			121.9	118.0	31	2291	
Arr	King Abulla II. AFB			121.9	118.0	31	2291	
Div	Ramat David AFB		118.4		118.6	27	125	

**FLIGHTPLAN**

#	Name	Navaid/Coords/DME	ALT	TOT
1	Sunshine	N32 00 40 E036 12 56	2300	
2	Holding	N32 35 01 E035 35 01	20000	
3	DMPI1	N33 17 07 E036 26 51	2161	
4	DMPI2	N33 17 04 E036 27 13	2161	
5	DMPI3	N33 16 50 E036 27 01	2161	
6	DMPI4	N33 17 17 E036 27 14	2161	
7	DMPI5	N33 17 24 E036 27 31	2161	
8	DMPI6	N33 17 07 E036 27 42	2161	
9	DMPI7	N33 17 35 E036 27 56	2161	
10	DMPI8	N33 17 24 E036 27 50	2161	
11	DMPI9	N33 17 18 E036 28 06	2161	
12	Sunshine	N32 00 40 E036 12 56	2300	

**COMMS**

Radio	Usage
1	121.90 - 118.00 - 377.80 - 118.00 - 121.90
2	232.85 Secure Cipher 4
3	32.85

## NOTES

Jumanji: AH-64 Attack EWR

Gator: EWR Destroyed, Push

Rhino: EWR NOT Destroyed (Mission Scrubbed)

Crow: SA-10/SA-11 Suppressed (informational only)

## OTHER FLIGHTS

Callsign	Mission	Airframe	Freq	TCN	Grpld	Laser
Nazgul 6	Strike	4x F-15E	262.45	1/64	40	166X
AO	Damascus	Task	ATO 903 - 0B5			
Panther 5	Training	2x F/A-18C	261.35	1/64		157X
AO		Task				
Tiger 1	Training	3x F/A-18C	261.15	11/74	1	161X
AO	Syria 20B25	Task	SEAD / ATO 903			
Monster 1	Training	4x A-10C	132.15	1/64	21	161X
AO	ATO 903	Task	Strike Bunker containing SCUD, Drones			
Tiger 7	CAP	2x F/A-18C	265.35	1/64		155X
AO		Task	ATO901			
Outlaw 6	Strike	2x AH-64D	133.5	1/64		170X
AO		Task	ATO904			
Raptor 1	SEAD	4x F-16C	134.0	1/64		162X
AO		Task	ATO 902			
Raptor 2	DEAD	4x F-16C	134.0	1/64		162X
AO		Task	ATO 902			
Edelweiss 1	Training	1x F-16C	264.15	11/74		171X
AO		Task				

**RADIO CHANNELS**

#	Freq	Name
1		Flight/Squadron specific
2	288.2	Akrotiri ATIS
3	240.1	Akrotiri Ground
4	339.85	Aktrotiri Tower
5	335.05	Akrotiri Approach
6	360.1	Incirlik Tower
7	371.35	Incirlik Ground
8	377.475	Incirlik ATIS
9		No Preset
10	127.3	Paphos ATIS
11	353.8	Paphos Tower
12	304.0	CVN-73 George Washington
13	302.0	LHA-1 Tarawa
14	259.0	CV-59 Forrestal
15		No Preset
16	377.8	Overlord
17	265.0	KC-135 Texaco-1 medium/slow
18	319.8	KC-135 Arco-1
19	360.8	KC-135MPRS Arco-2
20	256.0	S-3B Recovery Tanker

**RAMROD**

0	1	2	3	4	5	6	7	8	9
L	O	V	E	M	A	K	I	N	G

**KTC 1400 C**

	0	1	2	3	4	5	6	7	8	9
A	LXKF	RAM	DJV	SB	NE	YCI	PT	WG	HO	UQ
B	ALKT	MBD	FXW	YE	PU	QCJ	RH	GV	IS	ON
C	YKAJ	GUI	FSL	OD	QX	MHT	ER	BN	WV	PC
D	BDPS	XWH	QLC	AR	VM	NOU	FK	EG	IJ	TY
E	HAQD	WTU	OCE	LR	JF	BXV	MY	NK	IP	GS
F	XFHW	PVK	LDC	YB	UT	IEG	RJ	NS	QA	OM
G	GQUF	DNM	WRS	BH	IJ	ETK	LO	CA	VX	YP
H	PGAB	LKN	RCD	XW	JY	UQV	SH	TI	FO	ME
I	RLGE	TOW	VHJ	KF	XC	MID	UA	BN	PY	SQ
J	MQDG	SJI	UVA	TN	KW	RYH	CX	PE	OL	BF
K	GCDQ	IHJ	BRP	WN	AO	UYS	FE	LT	VX	MK
L	LBND	KOU	GYF	WP	CR	QET	HA	JX	IM	VS
M	VLUF	OJG	WIN	HC	MD	YAP	XK	QR	TS	BE
N	SYOE	ADF	LVU	QN	HW	TIB	PX	CR	MG	JK
O	FSRN	BXJ	LDE	HK	UW	AVC	OQ	YM	PT	GI
P	CMIH	PDK	XVS	GY	TN	QFB	RW	EL	AO	UJ
Q	UDIP	JWA	CRO	MB	HN	QVF	GS	XL	ET	YK
R	CBXH	LQO	TGV	NM	IE	KRP	UA	YS	FJ	WD
S	BUMC	PGA	WOT	KR	QJ	SXN	FD	IH	LE	YV
T	DGLV	MKH	TCU	NF	XB	PJS	YE	RA	IO	QW
U	ABFX	VKO	IPS	HE	DR	LMW	YN	TG	JQ	CU
V	UPQX	LRD	VEF	GI	NT	MSC	OK	WJ	HB	AY
W	DWPC	HGK	BUL	OF	EA	YRN	JQ	TI	MX	SV
X	RIFJ	DPO	YAU	GM	EW	LHS	CV	XQ	KB	NT
Y	RXCK	QJY	HVG	IF	TW	BND	ES	UP	AO	ML

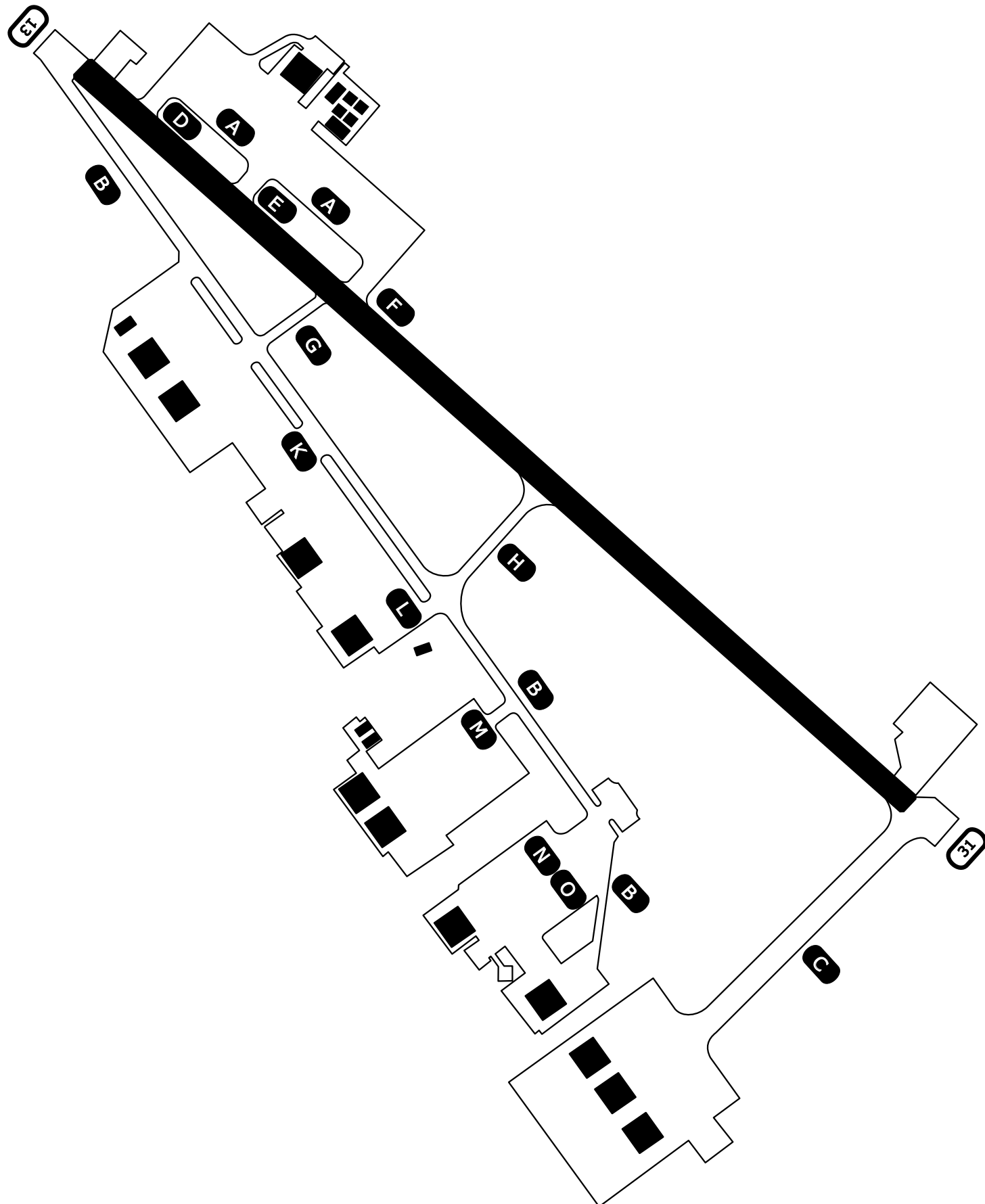
**NAVAIDS**

<b>Id</b>	<b>Name</b>	<b>Channel</b>	<b>Position</b>	<b>Elevation</b>
DAN	Incirlik	21	N37 00.950 E035 26.883	243
AKR	Akrotiri	107	N34 34.765 E032 57.769	147
PHA	Paphos	79	N34 42.997 E032 28.963	35
RMD	Ramat David	84	N32 39.892 E035 11.265	136
OS66	Kuweires Military Aviation Institute	36	N36 11.362 E037 34.226	1200

# Ground Chart Airport Diagram

Amman, Jordan

King Abdulla II. AFB (OJKA)



"Sunshine Tower" : 118.0MHz  
"Sunshine Ground" : 121.9MHz

RWY 13/31 : TORA+LDA 7000ft  
Elev 2291



**NOT AVAILABLE**

**NOT AVAILABLE**

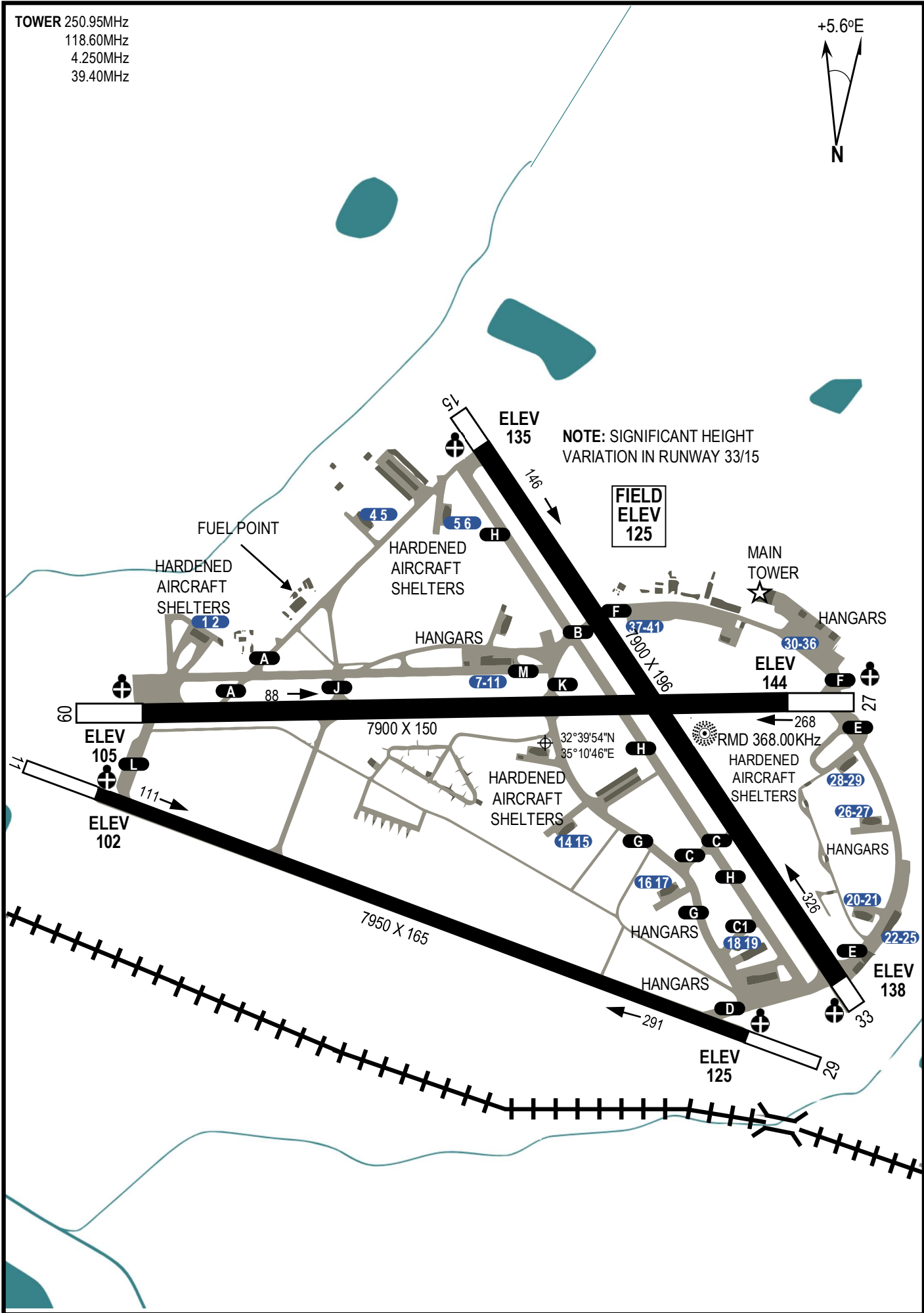
**NOT AVAILABLE**

TOWER 250.95MHz  
118.60MHz  
4.250MHz  
39.40MHz



DCS SYRIA EFFECTIVE: 19 AUG 2020

DCS SYRIA EFFECTIVE: 19 AUG 2020



NOTE: SIGNIFICANT HEIGHT VARIATION IN RUNWAY 33/15