

MISSION DATA CARD

OPORD		Callsign		Mission		Date/Time		
2914/2024		Edelweiss 1		Training		181420MAY24		
Task						Freq		
AO						264.15		
Departure				Recovery				
RWY10 SID				RWY10 VFR				
#	Callsign		Pilot		IFF	TCN	LSR	NET
-1	Edelweiss 1-1		Snowbird		1711	10Y	1711	

LOADOUT

A/A	2xA120C, 2xA9X				GUN	100% HEI-T	
A/G					CHF	120	
POD					FLR	0	
TKS	2xFT300				FUEL	100%	

TOLD

	Takeoff	Target	Joker	Bingo	Land
FUEL	11169				

AIRBASES

	Name	TCN	ATIS	GND	TWR	RWY	Elev	ILS
Dep	Akrotiri AFB	107X	288.2	240.1	339.85	28	62	109.7
Arr	Akrotiri AFB	107X	288.2	240.1	339.85	28	62	109.7
Div	Paphos Internationl	79X	127.3		353.8	29	40	108.9

SUPPORT**Tanker**

Callsign	TCN	Freq	ALT	TAS
TEXACO 1	71Y	265.0	FL170	300
	Pos	TEXACO1: (N3657 E03434)		
ARCO 1	22Y	319.8	FL222	400
	Pos	ARCO1: (N3701 E03457)		
SHELL 3	93Y	278.75	FL170	215
	Pos	SHELL3: (N3436 E03419)		

RADIO CHANNELS

#	Freq	Name
1		Flight/Squadron specific
2	288.2	Akrotiri ATIS
3	240.1	Akrotiri Ground
4	339.85	Aktrotiri Tower
5	335.05	Akrotiri Approach
6	360.1	Incirlik Tower
7	371.35	Incirlik Ground
8	377.475	Incirlik ATIS
9		No Preset
10	127.3	Paphos ATIS
11	353.8	Paphos Tower
12	304.0	CVN-73 George Washington
13	302.0	LHA-1 Tarawa
14	259.0	CV-59 Forrestal
15		No Preset
16	377.8	Overlord
17	265.0	KC-135 Texaco-1 medium/slow
18	319.8	KC-135 Arco-1
19	360.8	KC-135MPRS Arco-2
20	256.0	S-3B Recovery Tanker

RAMROD

0	1	2	3	4	5	6	7	8	9
S	H	O	P	L	I	F	T	E	D

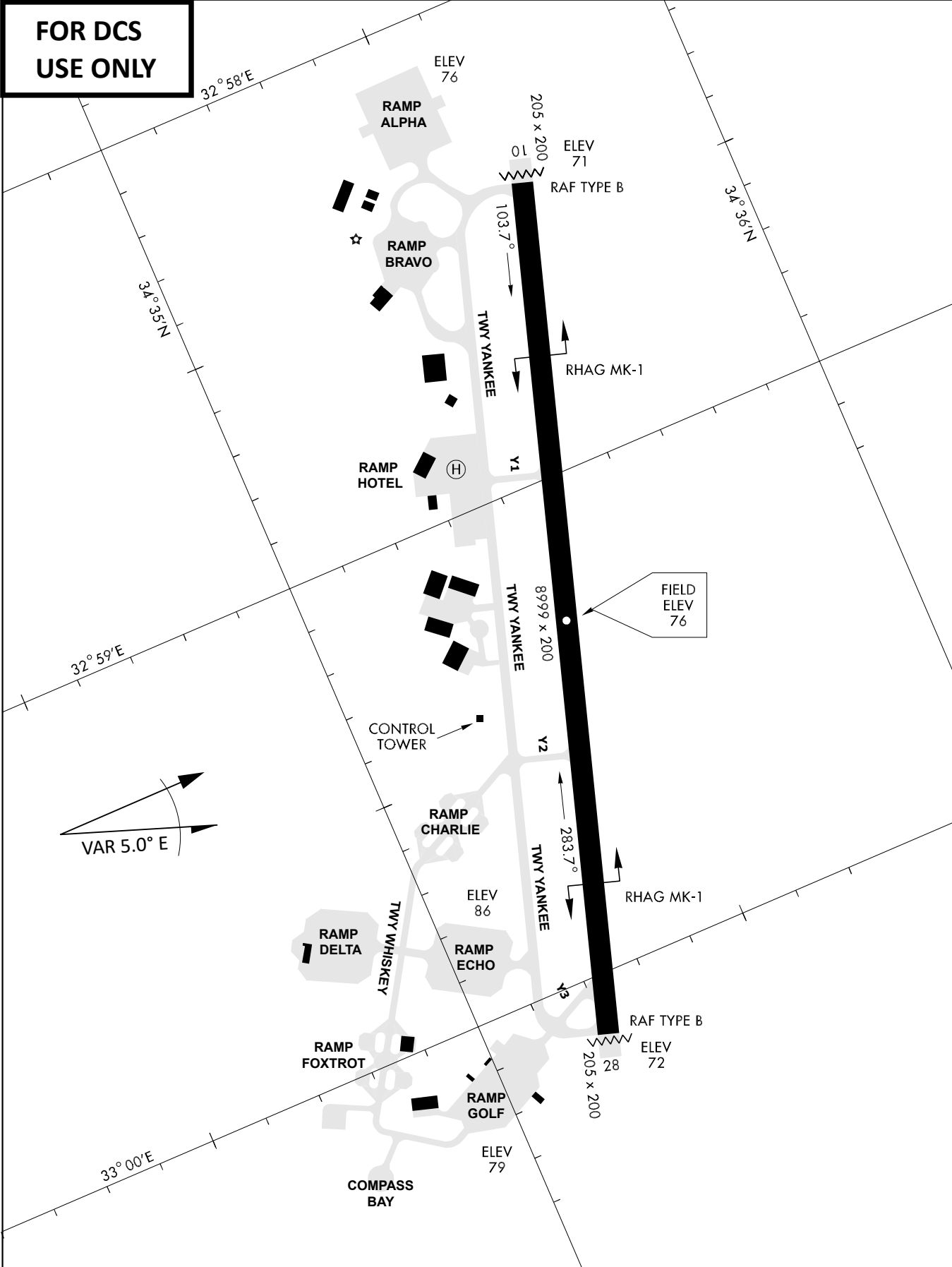
KTC 1400 C

	0	1	2	3	4	5	6	7	8	9
A	IKNW	JVC	ULP	EG	AR	DHO	XF	SB	TQ	YM
B	CRQF	IJK	NOU	WT	XA	GMS	YB	HE	PV	LD
C	NYFD	RSA	VIX	LB	CK	OGT	UW	HP	JM	QE
D	NHDA	MIB	KJX	EW	TR	CVU	QL	GY	FS	OP
E	FVLY	GWN	MAS	PR	TU	DEJ	CK	HX	BQ	OI
F	RTYS	CME	FWP	LD	NO	GIK	XA	JB	QH	UV
G	IWAD	UTH	KES	LB	VC	NGM	JP	OX	FQ	YR
H	NICK	ARO	TFD	MV	SL	PBX	UQ	EW	GH	JY
I	SKMA	TQG	OCY	UD	VN	LBH	IE	FR	JX	WP
J	WOCS	PAR	VNJ	IB	KF	UQH	MD	EG	XL	YT
K	VPHG	NUQ	DSK	YM	JE	CTF	AL	RO	XI	WB
L	SERC	QBY	GHN	FA	OT	PMD	JW	XV	UI	KL
M	APGK	MHF	CNW	RT	LX	VDI	ES	OJ	YB	UQ
N	THGC	QVR	UWL	YS	OA	NMX	EI	JB	KP	DF
O	TFOI	GXJ	KES	HC	MU	NQP	WL	VY	DA	BR
P	GDKR	NVB	QPU	MW	OT	SIY	FA	HJ	XL	CE
Q	IECX	AQU	LGK	DT	WN	BVS	HJ	PF	OR	MY
R	AGNB	TXC	WKJ	VS	IF	LQD	PR	EU	HO	MY
S	MTGU	ARQ	INL	HS	WE	DJV	PY	OF	XK	CB
T	EYBX	UIV	FQO	HK	JW	MLC	PN	RD	AG	TS
U	WQVI	NXY	OKB	HL	GU	CSP	MR	EJ	FT	AD
V	GKFU	BVC	LDR	NO	IH	PXT	SM	WE	AQ	JY
W	IOBW	EFX	CPR	MG	KU	LNJ	QS	AV	YT	DH
X	IWTX	PHE	SVY	UR	AN	KQC	GB	MO	FJ	DL
Y	TDLH	SUG	VXP	IY	OC	MFA	EQ	RB	KN	JW

NAVAIDS

Id	Name	Channel	Position	Elevation
DAN	Incirlik	21	N37 00.950 E035 26.883	243
AKR	Akrotiri	107	N34 34.765 E032 57.769	147
PHA	Paphos	79	N34 42.997 E032 28.963	35
RMD	Ramat David	84	N32 39.892 E035 11.265	136
OS66	Kuweires Military Aviation Institute	36	N36 11.362 E037 34.226	1200

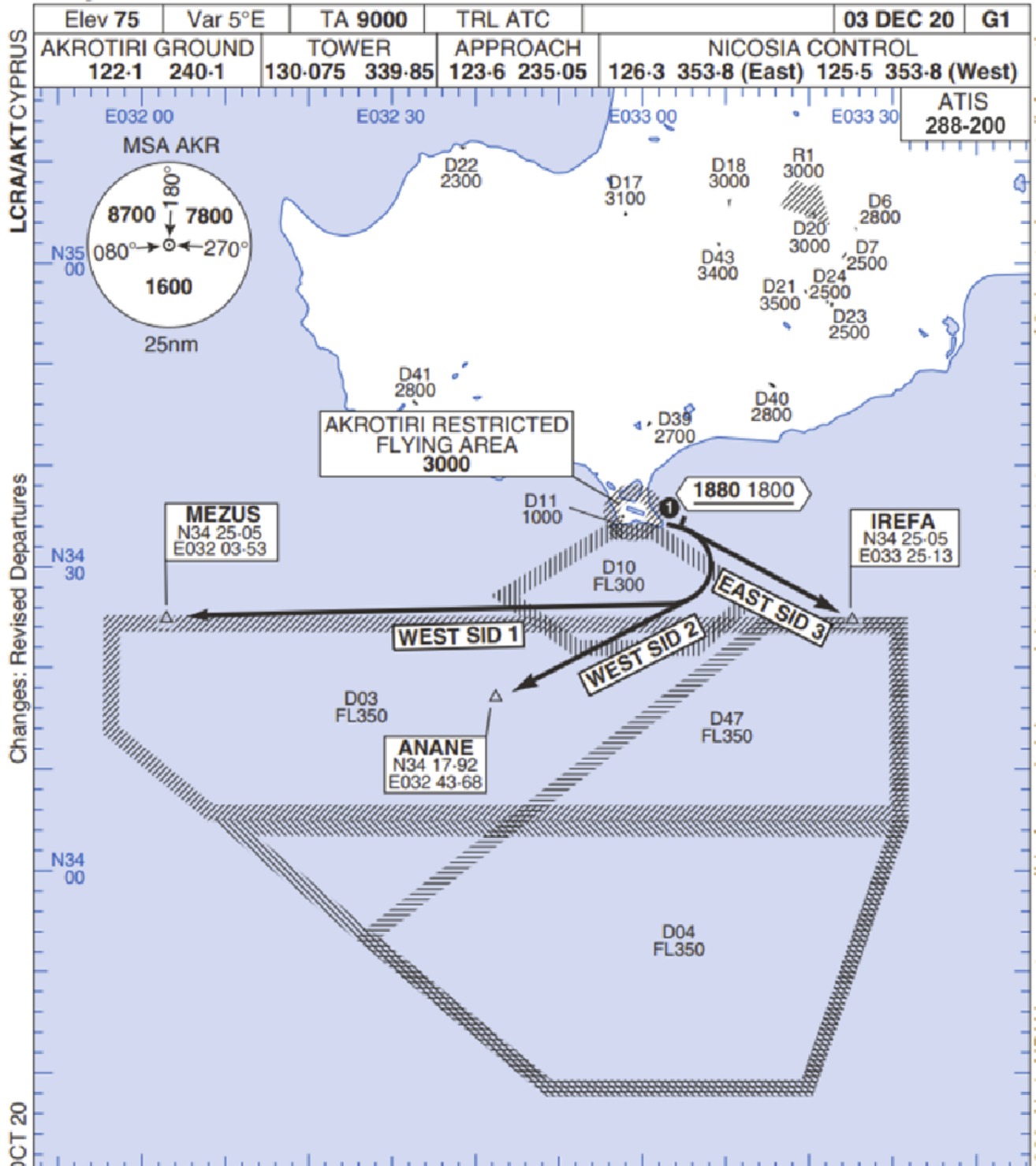
**FOR DCS
 USE ONLY**



ATIS	AKROTIRI GND	AKROTIRI TWR	OVERLORD CONTROL	TACAN	FIELD ELEVATION
288.20 MHz	240.10 122.10	339.85 130.075	377.8	AKR 107X	75 [ft] 23 [m]

Rwy 10 OMNIDIRECTIONAL DEPARTURES

AKROTIRI



LCRA/AKTCYPRUS

Changes: Revised Departures

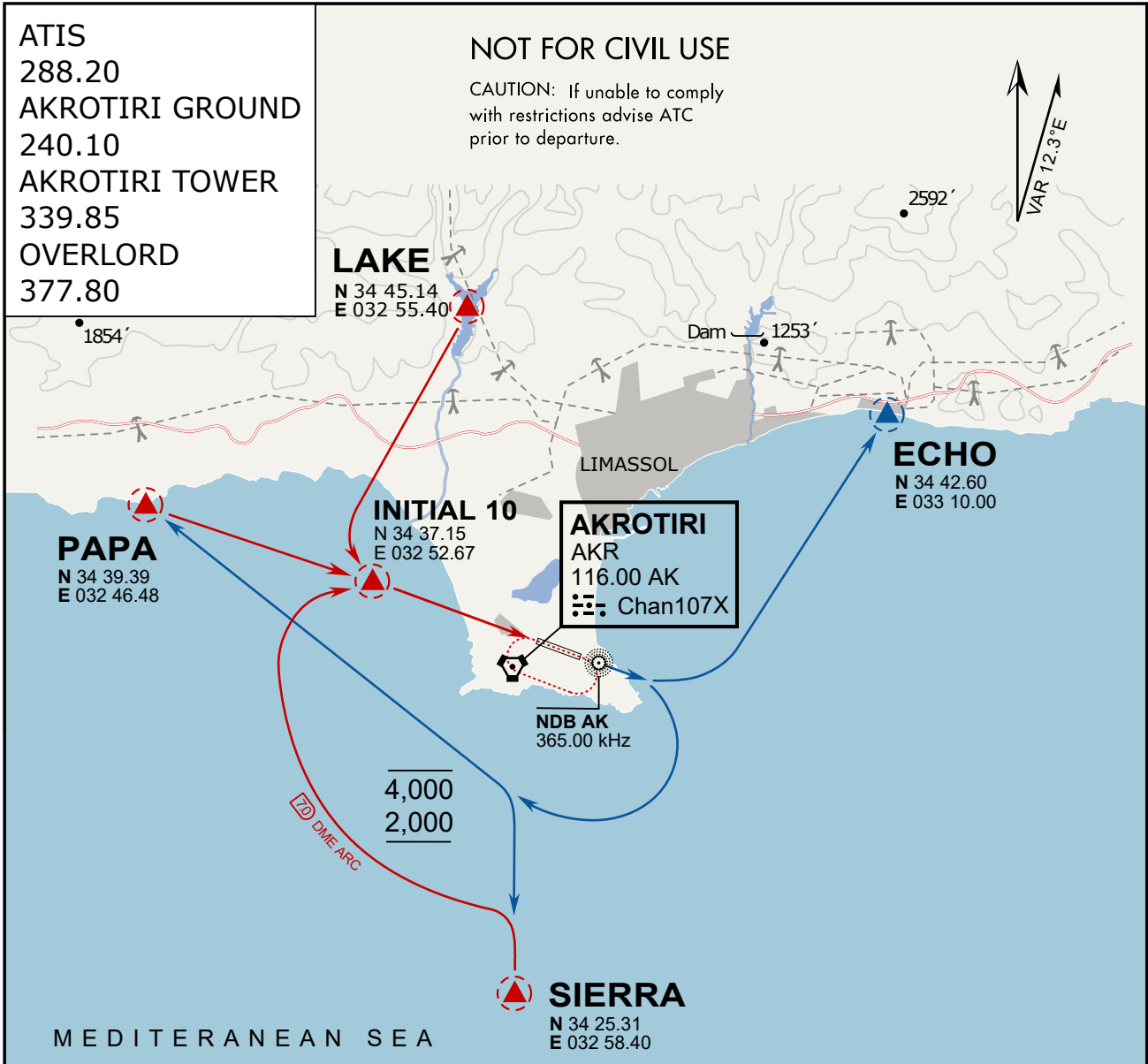
No1 AIDU Last Amended 06 OCT 20

© UK MOD Crown Copyright 2020. No1 AIDU is not responsible for, and claims no right to, the content or accuracy of 3rd party documents/information.

Elev 75	Var 5°E	TA 9000	TRL ATC		03 DEC 20	G1
AKROTIRI GROUND 122.1 240.1		TOWER 130.075 339.85		APPROACH 123.6 235.05		NICOSIA CONTROL 126.3 353.8 (East) 125.5 353.8 (West)
						ATIS 288-200

- ① Minimum climb gradient 7% to 1880 1800 for obstacle and operational purposes.
- 2. No turns before DER.
- 3. Turns to north of Rwy **prohibited**.
- 4. Acft unable to locate MEZUS/ANANE/IREFA should request radar vectors from ATC.

SID	RWY	ROUTEING (Including Mnm Noise Routes)
WEST SID 1	10 103°M	Ahead on Rwy Tr to 1880 1800, then right direct to MEZUS. SID terminates at 9000.
WEST SID 2		Ahead on Rwy Tr to 1880 1800, then right direct to ANANE. SID terminates at 9000.
EAST SID 3		Ahead on Rwy Tr to 1880 1800 then right direct to IREFA. SID terminates at 9000.



vJaBoG32 ETTR NAV CHART

ARR / DEP ROUTE DESCRIPTION

ARRIVAL GENERAL

Pass Entry at 5.000' or below. Overhead Brake RWY 10: pass INITIAL 10 at 2.000' MSL. Straight-in RWY 10 : pass INITIAL 1.500' or below.

ARR RWY10 PAPA / LAKE: Direct initial.

ARR RWY10 SIERRA: Intercept ARC 7 of AKR to INITIAL 10.

ARR ECHO: no ENTRY.

DEPARTURE GENERAL

Pass Departure end of runway at 1.000' AGL or below. Keep RWY heading until coastline.

DEP RWY10 ECHO: Direct EXIT.

DEP RWY10 SIERRA: Climbing right turn, intercept R180 AKR to Sierra.

DEP RWY10 PAPA: Climbing right turn until R180 AKR, then direct Papa

DEP LAKE: no EXIT.

NOT AVAILABLE

NOT AVAILABLE