

MISSION DATA CARD

OPORD		Callsign		Mission		Date/Time	
2913/2024		Tiger 1		Training		232000MAY24	
Task	SEAD / ATO 903					Freq	
AO	Syria 20B25					261.15	
Departure				Recovery			
CAT				CASE I			
#	Callsign	Pilot		IFF	TCN	LSR	NET
-1	Tiger 1-1	Ghost		1011	11Y	1611	01/01
-2	Tiger 1-2	Jemi		1012	74Y	1612	01/02
-3	Tiger 1-3	Kosmoss		1013	74X	1613	01/03

LOADOUT

A/A	2xA9X, A120C				GUN	100% HEI-T	
A/G	A88C, 2x3x ADM-141A - BRU-42, A65F				CHF	90	
POD	TGP				FLR	30	
TKS	FPU-8A				FUEL	100%	

TOLD

	Takeoff	Target	Joker	Bingo	Land
FUEL	13047		7000	4000	1500

AIRBASES

	Name	TCN	ATIS	GND	TWR	RWY	Elev	ILS
Dep	CVN-73 USS G. Washington	55X		ICLS 12	304.0			
Arr	CVN-73 USS G. Washington	55X		ICLS 12	304.0			
Div	Akrotiri AFB	107X	288.2	240.1	339.85	28	62	109.7

FLIGHTPLAN

#	Name	Navaid/Coords/DME	ALT	TOT
1	Fence In	N32 49 12.089 E035 35 19.326	25000	
2	SA2 / SA3	N33 05 22.917 E036 32 56.455	0	
3	SA2 / SA3	N33 17 05.146 E036 23 58.722	0	
4	SA6 / SA8	N33 17 12.950 E036 28 06.871	0	
5	SA3	N33 20 52.867 E036 27 57.568	0	
6	SA2 / SA3	N33 20 44.541 E036 31 00.071	0	
7	SA2 / SA3	N33 26 01.133 E036 30 46.241	0	
8	SA3	N33 21 10.549 E036 32 53.071	0	
9	SA2	N33 36 02.068 E036 48 39.985	0	
10	Colld	N32 54 55.215 E036 45 41.489	25000	
11	Fence Ou	N32 43 18.332 E035 35 51.029	25000	
12	Ramat David AB / Altenate	N32 39 57 E035 09 55	15000	
13	CVN-73 George Washington	N32 23 43.558 E033 19 00.957	1500	

COMMS

Radio	Usage
1	12(GW), 16(OV), 15(TX2), 16(OV), 12(GW)
2	261.55
3	MIDS A: 24 / B: 44

NOTES

TIGER 2: ATO101 Sea Control

Fuel (lbs):

TO: 15000

Climb: 1600

Inbound: 700

on Station: 9000lbs (1h + 2 x descend/climb)

outbound to tanker: 900

at tanker: 4000 lbs

=====

TO: 08:30

Station Time: 60 min

Bingo: 4000

Joker: 7000

CAT 1/2

=====

Kontroll-Korridor:

NW: N34 54.779 E034 56.095 - NE: N34 54.770 E035 37.740

SW: N33 17.492 E034 05.706 - SE: N33 17 25.260 E034 49.458

=====

Weather :

Time : 02.05.2024, 08:00 lcl / 05:00Z

Clouds : FEW 14.000ft

Wind : 0ft 053/6 , 1600ft 053/14 , 6600ft 056/16 , 26000ft 75/16

QNH 30.00 inHg

=====

Bullseye

N 32° 48.700' E 34° 59.233' (Haifa)

TALD HDG from WPT 1 035, 055, 075

COORD TALD WITH AWACS/TOMAHAWK

PRIMARY TGTs WPT 2,3,4,7

SUPPORT**Tanker**

Callsign	TCN	Freq	ALT	TAS
ARCO 2	41Y	360.8	FL220	400
	Pos	ARCO2: (N3653 E03452)		
TEXACO 2	44Y	244.78	FL150	250
	Pos	TEXACO2: (N3424 E03403)		

AWACS

Callsign	Freq	ALT	Pos
OVERLORD2	377.8	FL320	N3713 E03643 - N3714 E03749

OTHER FLIGHTS

Callsign	Mission	Airframe	Freq	TCN	Grpld	Laser
Nazgul 6	Strike	4x F-15E	262.45	1/64	40	166X
AO	Damascus	Task	ATO 903 - 0B5			
Panther 5	Training	2x F/A-18C	261.35	1/64		157X
AO		Task				
Hawg 1	Strike	3x A-10C	232.85	29/92	33	166X
AO		Task	ATO903			
Monster 1	Training	4x A-10C	132.15	1/64	21	161X
AO	ATO 903	Task	Strike Bunker containing SCUD, Drones			
Tiger 7	CAP	2x F/A-18C	265.35	1/64		155X
AO		Task	ATO901			
Outlaw 6	Strike	2x AH-64D	133.5	1/64		170X
AO		Task	ATO904			
Raptor 1	SEAD	4x F-16C	134.0	1/64		162X
AO		Task	ATO 902			
Raptor 2	DEAD	4x F-16C	134.0	1/64		162X
AO		Task	ATO 902			
Edelweiss 1	Training	1x F-16C	264.15	11/74		171X
AO		Task				

RADIO CHANNELS

#	Freq	Name
1		Flight/Squadron specific
2	288.2	Akrotiri ATIS
3	240.1	Akrotiri Ground
4	339.85	Aktrotiri Tower
5	335.05	Akrotiri Approach
6	360.1	Incirlik Tower
7	371.35	Incirlik Ground
8	377.475	Incirlik ATIS
9		No Preset
10	127.3	Paphos ATIS
11	353.8	Paphos Tower
12	304.0	CVN-73 George Washington
13	302.0	LHA-1 Tarawa
14	259.0	CV-59 Forrestal
15		No Preset
16	377.8	Overlord
17	265.0	KC-135 Texaco-1 medium/slow
18	319.8	KC-135 Arco-1
19	360.8	KC-135MPRS Arco-2
20	256.0	S-3B Recovery Tanker

RAMROD

0	1	2	3	4	5	6	7	8	9
L	O	V	E	M	A	K	I	N	G

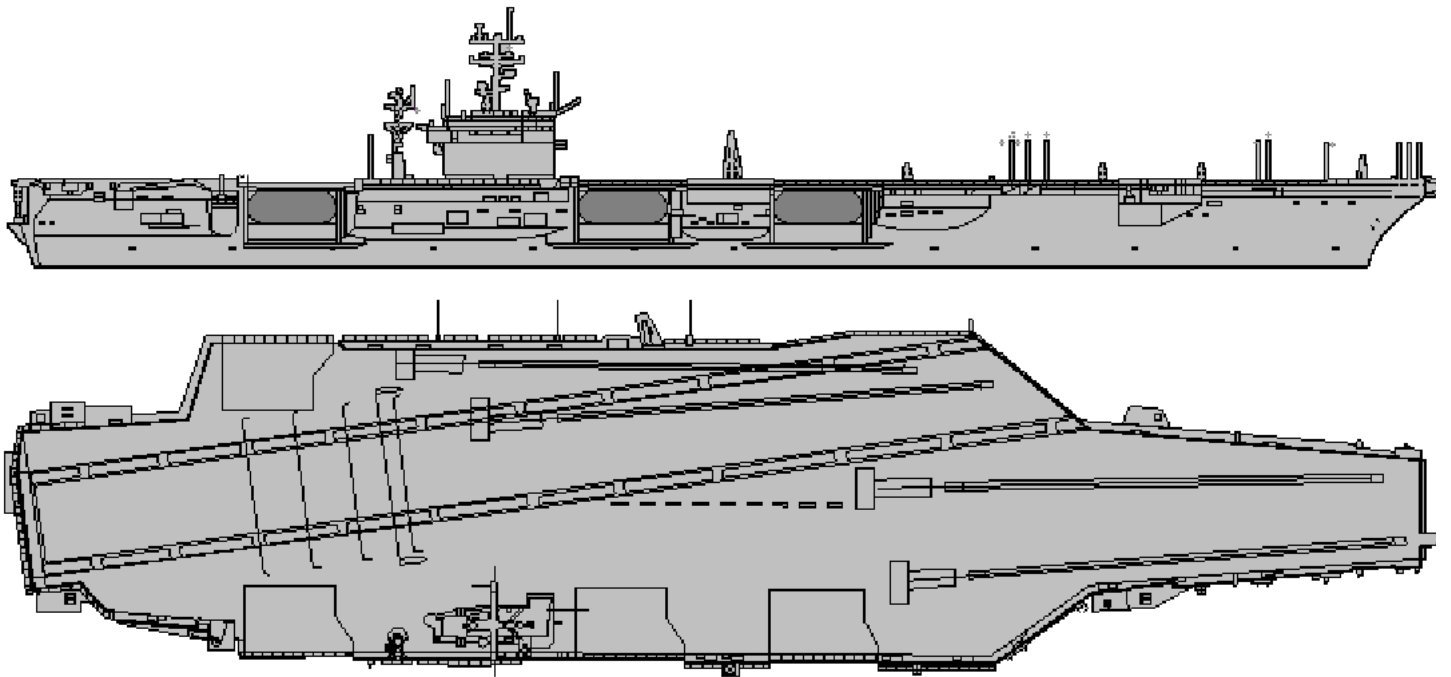
KTC 1400 C

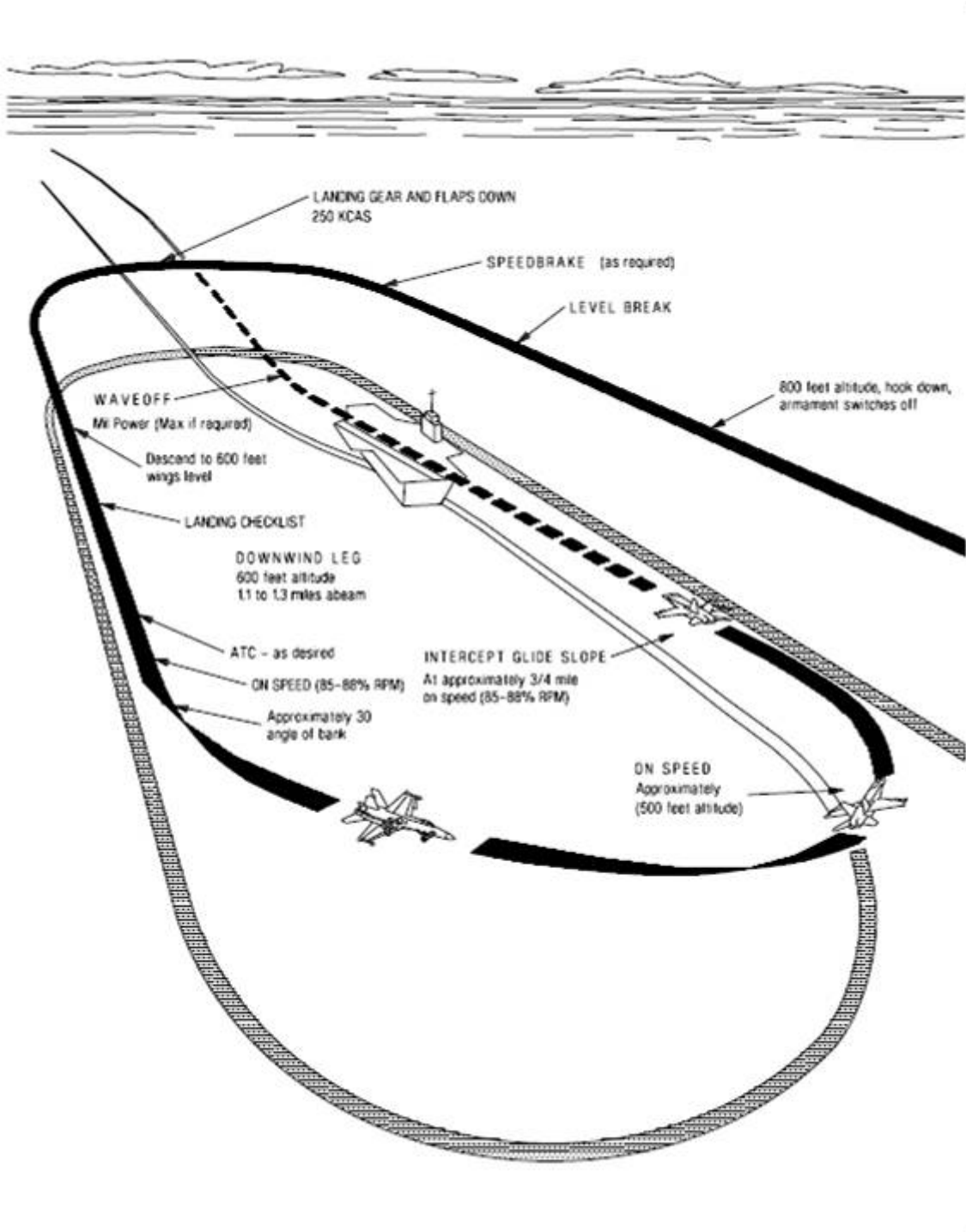
	0	1	2	3	4	5	6	7	8	9
A	LXKF	RAM	DJV	SB	NE	YCI	PT	WG	HO	UQ
B	ALKT	MBD	FXW	YE	PU	QCJ	RH	GV	IS	ON
C	YKAJ	GUI	FSL	OD	QX	MHT	ER	BN	WV	PC
D	BDPS	XWH	QLC	AR	VM	NOU	FK	EG	IJ	TY
E	HAQD	WTU	OCE	LR	JF	BXV	MY	NK	IP	GS
F	XFHW	PVK	LDC	YB	UT	IEG	RJ	NS	QA	OM
G	GQUF	DNM	WRS	BH	IJ	ETK	LO	CA	VX	YP
H	PGAB	LKN	RCD	XW	JY	UQV	SH	TI	FO	ME
I	RLGE	TOW	VHJ	KF	XC	MID	UA	BN	PY	SQ
J	MQDG	SJI	UVA	TN	KW	RYH	CX	PE	OL	BF
K	GCDQ	IHJ	BRP	WN	AO	UYS	FE	LT	VX	MK
L	LBND	KOU	GYF	WP	CR	QET	HA	JX	IM	VS
M	VLUF	OJG	WIN	HC	MD	YAP	XK	QR	TS	BE
N	SYOE	ADF	LVU	QN	HW	TIB	PX	CR	MG	JK
O	FSRN	BXJ	LDE	HK	UW	AVC	OQ	YM	PT	GI
P	CMIH	PDK	XVS	GY	TN	QFB	RW	EL	AO	UJ
Q	UDIP	JWA	CRO	MB	HN	QVF	GS	XL	ET	YK
R	CBXH	LQO	TGV	NM	IE	KRP	UA	YS	FJ	WD
S	BUMC	PGA	WOT	KR	QJ	SXN	FD	IH	LE	YV
T	DGLV	MKH	TCU	NF	XB	PJS	YE	RA	IO	QW
U	ABFX	VKO	IPS	HE	DR	LMW	YN	TG	JQ	CU
V	UPQX	LRD	VEF	GI	NT	MSC	OK	WJ	HB	AY
W	DWPC	HGK	BUL	OF	EA	YRN	JQ	TI	MX	SV
X	RIFJ	DPO	YAU	GM	EW	LHS	CV	XQ	KB	NT
Y	RXCK	QJY	HVG	IF	TW	BND	ES	UP	AO	ML

NAVAIDS

Id	Name	Channel	Position	Elevation
DAN	Incirlik	21	N37 00.950 E035 26.883	243
AKR	Akrotiri	107	N34 34.765 E032 57.769	147
PHA	Paphos	79	N34 42.997 E032 28.963	35
RMD	Ramat David	84	N32 39.892 E035 11.265	136
OS66	Kuweires Military Aviation Institute	36	N36 11.362 E037 34.226	1200







ATIS

288.20

AKROTIRI GROUND

240.10

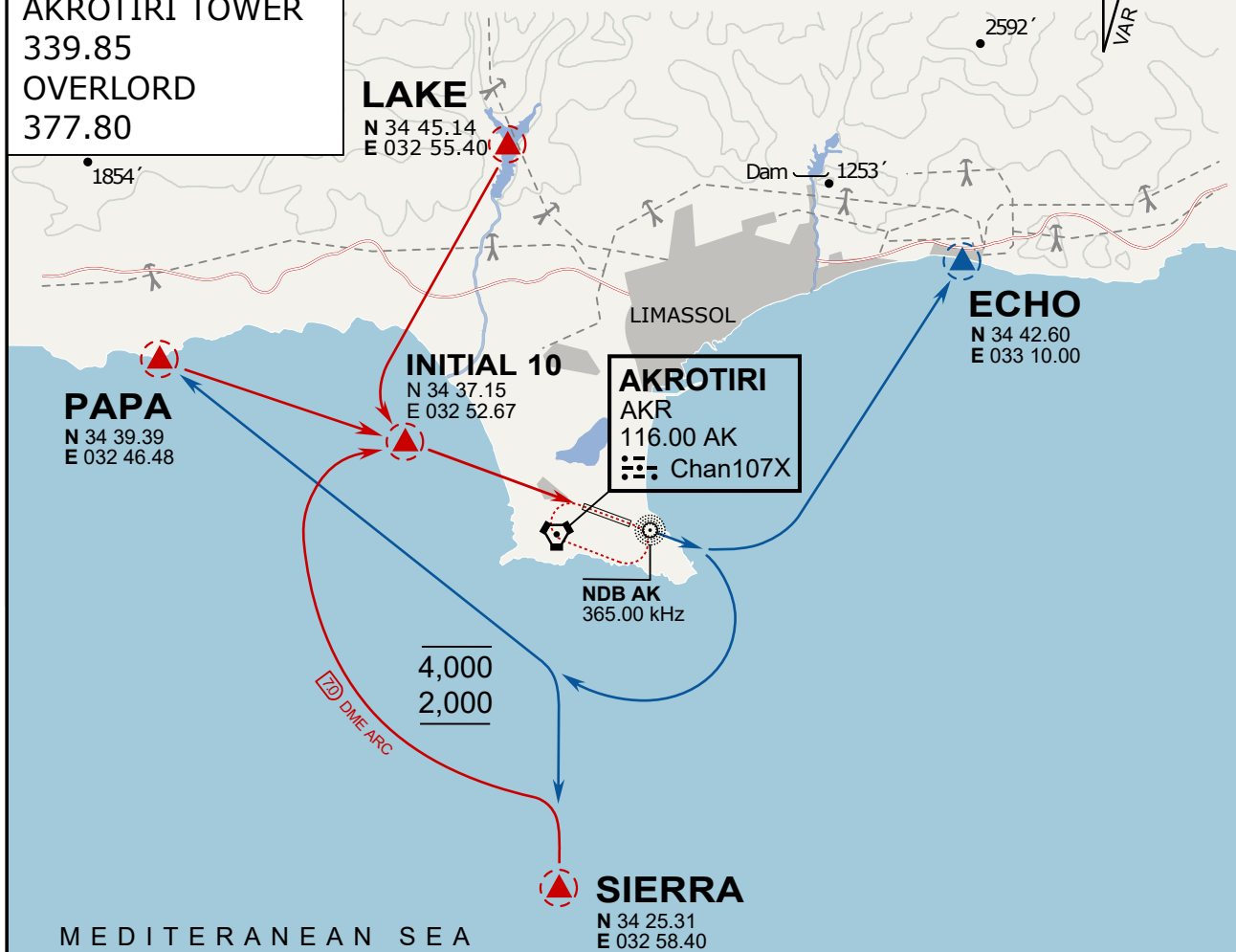
AKROTIRI TOWER

339.85

OVERLORD

377.80

NOT FOR CIVIL USE

CAUTION: If unable to comply
with restrictions advise ATC
prior to departure.

ARR / DEP ROUTE DESCRIPTION

ARRIVAL GENERAL

Pass Entry at 5.000' or below. Overhead Brake RWY 10: pass INITIAL 10 at 2.000' MSL.
Straight-in RWY 10 : pass INITIAL 1.500' or below.

ARR RWY10 PAPA / LAKE: Direct initial.

ARR RWY10 SIERRA: Intercept ARC 7 of AKR to INITIAL 10.

ARR ECHO: no ENTRY.

DEPARTURE GENERAL

Pass Departure end of runway at 1.000' AGL or below. Keep RWY heading until coastline.

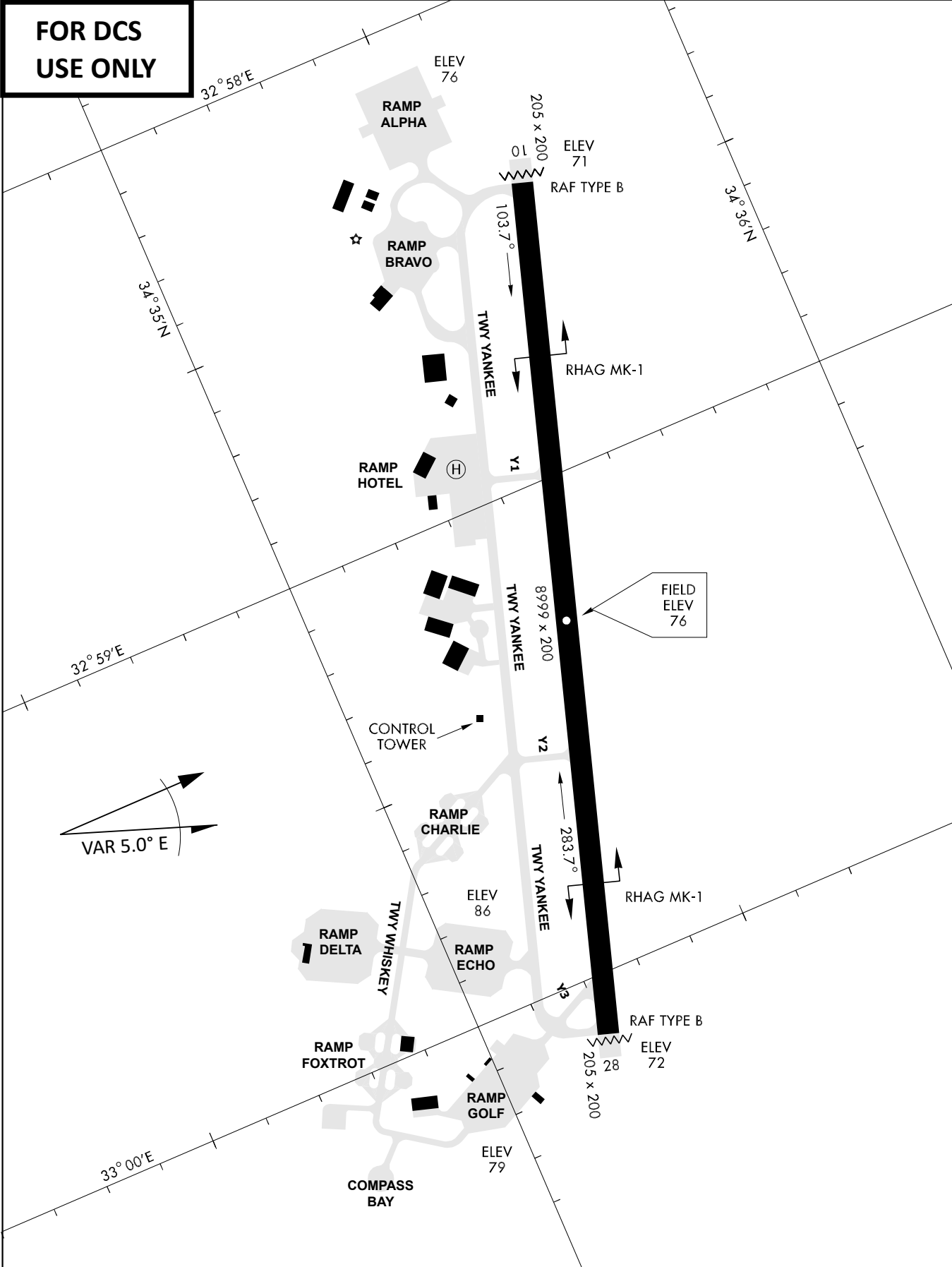
DEP RWY10 ECHO: Direct EXIT.

DEP RWY10 SIERRA: Climbing right turn, intercept R180 AKR to Sierra.

DEP RWY10 PAPA: Climbing right turn until R180 AKR, then direct Papa

DEP LAKE: no EXIT.

**FOR DCS
 USE ONLY**



ATIS	AKROTIRI GND	AKROTIRI TWR	OVERLORD CONTROL	TACAN	FIELD ELEVATION
288.20 MHz	240.10 122.10	339.85 130.075	377.8	AKR 107X	75 [ft] 23 [m]