

MISSION DATA CARD

OPORD		Callsign	Mission	Date/Time		
2911/2024		Edelweiss 1	Training	171639MAY24		
Task						Freq
AO						264.15
Departure			Recovery			
RWY28 VFR			ILS 28			
#	Callsign	Pilot	IFF	TCN	LSR	NET
-1	Edelweiss 1-1	Snowbird	1711	11Y	1711	

LOADOUT

A/A	2xA120C, 2xA9X	GUN	100% HEI-T
A/G		CHF	120
POD		FLR	0
TKS	3xFT300	FUEL	100%

TOLD

	Takeoff	Target	Joker	Bingo	Land
FUEL	13172				

AIRBASES

	Name	TCN	ATIS	GND	TWR	RWY	Elev	ILS
Dep	Akrotiri AFB	107X	288.2	240.1	339.85	28	62	109.7
Arr	Akrotiri AFB	107X	288.2	240.1	339.85	28	62	109.7
Div	Paphos Internationl	79X	127.3		353.8	29	40	108.9

FLIGHTPLAN

#	Name	Navaid/Coords/DME	ALT	TOT
1	ECHO	N34 42.600 E033 10	5000	
2	LAKE	N34 45.150 E032 55.400	5000	
3	PAPA	N34 39.390 E032 46.480	5000	
4	SIERRA	N34 25.310 E032 58.400	5000	

SUPPORT**Tanker**

Callsign	TCN	Freq	ALT	TAS
TEXACO 1	71Y	265.0	FL170	300
	Pos	TEXACO1: (N3657 E03434)		
ARCO 1	22Y	319.8	FL222	400
	Pos	ARCO1: (N3701 E03457)		
SHELL 3	93Y	278.75	FL170	215
	Pos	SHELL3: (N3436 E03419)		

RADIO CHANNELS

#	Freq	Name
1		Flight/Squadron specific
2	288.2	Akrotiri ATIS
3	240.1	Akrotiri Ground
4	339.85	Aktrotiri Tower
5	335.05	Akrotiri Approach
6	360.1	Incirlik Tower
7	371.35	Incirlik Ground
8	377.475	Incirlik ATIS
9		No Preset
10	127.3	Paphos ATIS
11	353.8	Paphos Tower
12	304.0	CVN-73 George Washington
13	302.0	LHA-1 Tarawa
14	259.0	CV-59 Forrestal
15		No Preset
16	377.8	Overlord
17	265.0	KC-135 Texaco-1 medium/slow
18	319.8	KC-135 Arco-1
19	360.8	KC-135MPRS Arco-2
20	256.0	S-3B Recovery Tanker

RAMROD

0	1	2	3	4	5	6	7	8	9
O	B	F	U	S	C	A	T	E	D

KTC 1400 C

	0	1	2	3	4	5	6	7	8	9
A	CEVG	SLR	HAY	OQ	JF	NPM	WK	IX	BD	TU
B	QFKO	TWJ	CNR	MG	AB	SPI	YE	DX	VH	UL
C	DXRV	NJQ	TMU	BO	PC	HAG	SF	YK	EL	WI
D	XEAW	YUB	RGV	PF	IQ	TJL	SC	OK	HD	NM
E	NEKU	SFW	DOA	RM	HT	GBL	YP	JC	XI	VQ
F	VRLM	SIH	XYQ	JN	CP	DAE	OF	BW	KT	UG
G	JXYT	UGB	ALN	KC	RQ	PWM	SE	DH	IF	OV
H	QGYV	TPE	RFC	MJ	HK	XWS	ON	BD	LA	UI
I	NYSR	IHJ	PLW	EU	TX	AKC	GQ	VO	BD	FM
J	SBXP	QIU	AFN	CL	JY	TEO	HV	MD	GW	KR
K	MBAP	WGY	EVX	QK	IO	UDS	HN	FJ	RL	TC
L	LXAM	RJP	IVB	QG	DH	UWO	TE	NF	CY	KS
M	GWPF	EBL	UYH	CN	AM	XQV	OT	JS	KR	DI
N	RGNQ	JDL	KXC	TE	SW	YVH	PU	MF	OA	IB
O	WMUX	YLS	JDP	KF	AE	QOB	VI	CN	RH	GT
P	XQBE	COR	MAS	FU	ID	HJK	LW	PT	NV	GY
Q	AVGE	OCT	FRH	WD	SN	BKQ	UL	MP	JX	YI
R	WKXF	IUV	PBO	DG	HM	AYT	QC	NJ	LR	ES
S	IJMN	WGL	XOV	PF	HS	QAC	RD	EK	TU	YB
T	UKTY	SIW	MOH	XP	AB	JCF	GQ	RL	NE	DV
U	URXI	JBW	MVF	OC	GE	QYK	PN	SD	AH	TL
V	QGXT	RLC	VDY	BJ	FK	EIU	WO	MH	SN	PA
W	LEXU	HDS	QJT	WP	VM	GCF	OK	BY	AN	IR
X	VRCL	GTA	OWB	XM	UF	EHY	QS	IN	DK	JP
Y	HQRO	UFD	EIL	KV	AS	XMB	JC	PT	GW	YN

NAVAIDS

Id	Name	Channel	Position	Elevation
DAN	Incirlik	21	N37 00.950 E035 26.883	243
AKR	Akrotiri	107	N34 34.765 E032 57.769	147
PHA	Paphos	79	N34 42.997 E032 28.963	35
RMD	Ramat David	84	N32 39.892 E035 11.265	136
OS66	Kuweires Military Aviation Institute	36	N36 11.362 E037 34.226	1200

**FOR DCS
 USE ONLY**



ATIS	AKROTIRI GND	AKROTIRI TWR	OVERLORD CONTROL	TACAN	FIELD ELEVATION
288.20 MHz	240.10 122.10	339.85 130.075	377.8	AKR 107X	75 [ft] 23 [m]

ATIS
 288.20
AKROTIRI GROUND
 240.10
AKROTIRI TOWER
 339.85
OVERLORD
 377.80

NOT FOR CIVIL USE

CAUTION: If unable to comply
 with restrictions advise ATC
 prior to departure.



ARR / DEP ROUTE DESCRIPTION

STRAIGHT-IN RWY28

Pass ENTRY at 5.000' MSL or below, pass INITIAL at 1.500' MSL or below.

OVERHEAD BREAK RWY28

Pass ENTRY at 5.000' MSL or below, pass INITIAL at 2.000' MSL, break to the south.

DEPARTURE GENERAL

Pass Departure end of runway at 1.000' or below.

DEP RWY28 PAPA: Fly straight ahead to exit.

DEP RWY28 LAKE: Fly straight ahead until coast, than right turn direct exit.

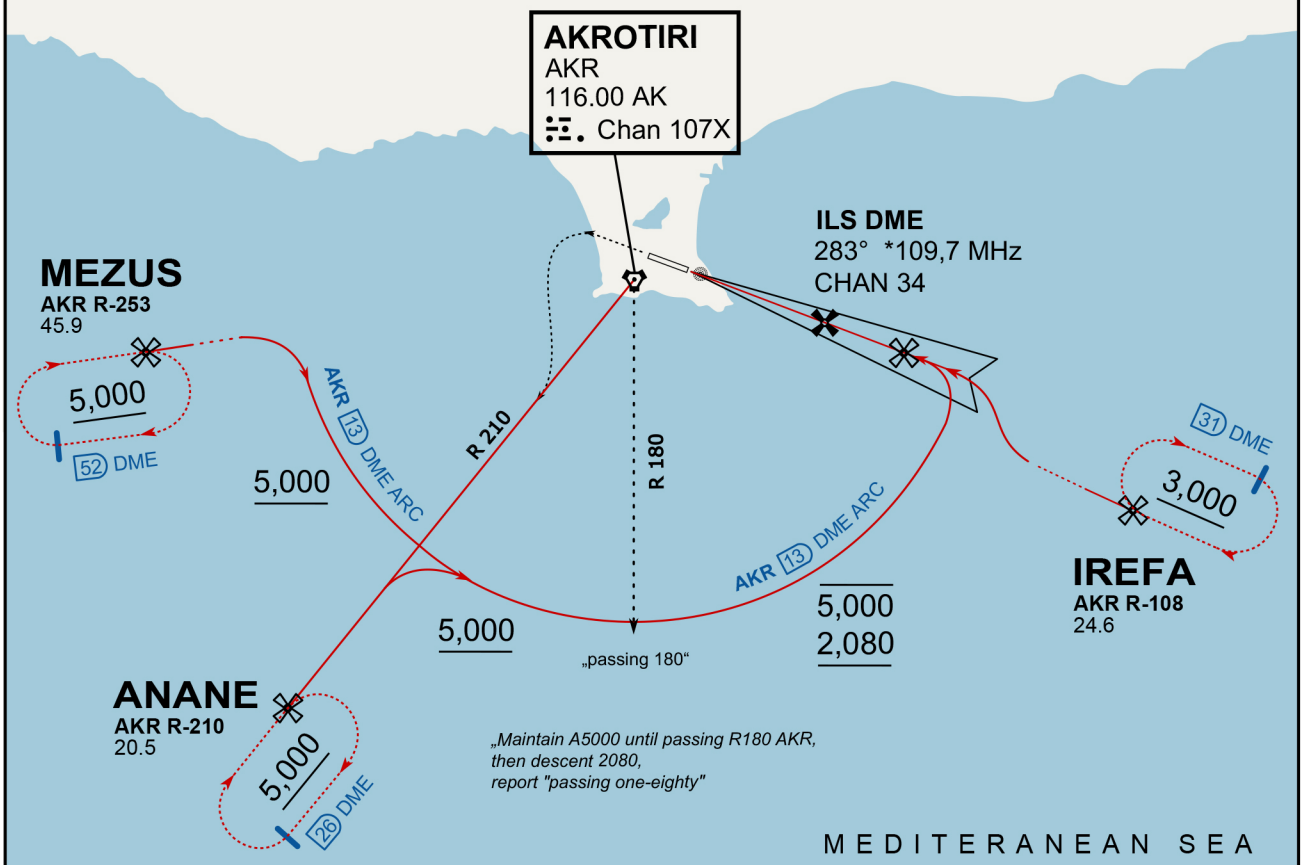
DEP RWY28 SIERRA: Fly straight ahead until coastline, then climbing left turn, intercept AKR R-180 to exit.

DEP ECHO: no exit.

ATIS
288.200
AKROTIRI GROUND
122.100
AKROTIRI TOWER
339.850
APP (OVERLORD)
377.800

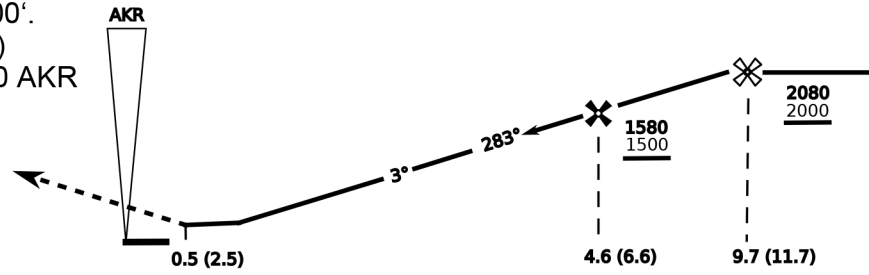
NOT FOR CIVIL USE

CAUTION: If unable to comply with restrictions advise ATC prior to departure.



vJaBoG32 ETTR NAV CHART

On Track 283° climb A 4.000'.
passing 2.080' (2.000' AAL)
turn left and intercept R-210 AKR
to ANANE.
Enter ANANE Holding.

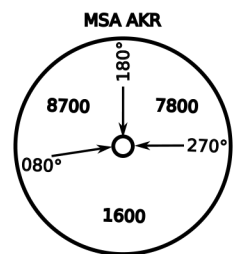


THR Elev 74ft DME I-AK (DME AKR)

CAT	ILS/DME	LOC/DME	CIRCLE	GS (kts)	80	120	150	180	210
				FAF - MAPt (4.1NM)	3:06	2:03	1:38	1:22	1:10
				RoD (fpm)	420	640	800	950	1110

CAT	ILS/DME	LOC/DME	CIRCLE	GS (kts)	80	120	150	180	210
				FAF - MAPt (4.1NM)	3:06	2:03	1:38	1:22	1:10
				RoD (fpm)	420	640	800	950	1110

- CIRCLING PROHIBITED N of Rwy
- no AUTO coupled ILS approaches
- when established on ILS contact Tower
- Timing not Auth to define MAPt



NOT AVAILABLE

NOT AVAILABLE