

MISSION DATA CARD

| | | | | | | | |
|-----------|-----------------------|--------------|--|-----------|-----|-------------|-----|
| OPORD | | Callsign | | Mission | | Date/Time | |
| 2904/2024 | | Nazgul 6 | | BAI | | 162000MAY24 | |
| Task | Buddy Lasing Training | | | | | Freq | |
| AO | Akamas Bomb Range | | | | | 262.45 | |
| Departure | | | | Recovery | | | |
| RWY28 VFR | | | | RWY10 VFR | | | |
| # | Callsign | Pilot | | IFF | TCN | LSR | NET |
| -1 | Nazgul 6-1 | Striver | | 1161 | 1Y | 1561 | |
| -2 | Nazgul 6-2 | Razorback | | 1162 | 64Y | 1562 | |
| -3 | Nazgul 6-3 | Repsus/Lempo | | 1163 | 64X | 1563 | |

LOADOUT

| | | | | | | |
|-----|----------------|--|--|--|------|----------------|
| A/A | 2xA120C, 2xA9M | | | | GUN | 100% SAPHEI |
| A/G | 8xG12, G24 | | | | CHF | 120 |
| POD | TGT, NAV | | | | FLR | 60 |
| TKS | 2xFT610 | | | | FUEL | 100% |

TOLD

| | | | | | |
|------|---------|--------|-------|-------|------|
| | Takeoff | Target | Joker | Bingo | Land |
| FUEL | 30518 | | | | |

AIRBASES

| | | | | | | | | |
|-----|--------------|------|-------|-------|--------|-----|------|-------|
| | Name | TCN | ATIS | GND | TWR | RWY | Elev | ILS |
| Dep | Akrotiri AFB | 107X | 288.2 | 240.1 | 339.85 | 28 | 62 | 109.7 |
| Arr | Akrotiri AFB | 107X | 288.2 | 240.1 | 339.85 | 28 | 62 | 109.7 |

FLIGHTPLAN

| # | Name | Navaid/Coords/DME | ALT | TOT |
|---|--------|------------------------|-------|-----|
| 1 | ECHO | N34 42.600 E033 10 | | |
| 2 | LAKE | N34 45.150 E032 55.400 | | |
| 3 | IP | N35 09 E032 26 | 5000 | |
| 4 | Orbit | N35 05 E032 23 | 20000 | |
| 5 | AKB.T1 | N35 04.371 E032 19.093 | 79 | |
| 6 | AKB.T2 | N35 04.371 E032 18.086 | 587 | |
| 7 | AKB.T3 | N35 04.737 E032 18.030 | 427 | |
| 8 | AKB.T4 | N35 04.971 E032 18.182 | 154 | |
| 9 | AKB.T5 | N35 05.038 E032 17.629 | 381 | |

NOTES

Standoff orbit attack:
Eyeball A20 on Orbit
Shooter A5 on IP

Eyeball give command, consider timing
Shooter run in and toss bomb -> Safe escape (60 ° OFF)
Eyeball lase

Deadeye single pass attack:
Eyeball A5, Shooter A4, both on IP, Combat Spread

Eyeball transfer target point and fly towards
Eyeball give command
Shooter drop at appropriate time (Toss) -> Safe escape (60 ° OFF)
Eyeball lase and orbit target
Eyeball command second attack
Shooter run in and toss bomb
Eyeball lase
Eyeball communicate egress heading
Shooter Rejoin

OTHER FLIGHTS

| Callsign | Mission | Airframe | Freq | TCN | Grpld | Laser |
|-------------|----------------------------|------------|--------------------------------------|-------|-------|-------|
| Edelweiss 1 | Training | 2x F/A-18C | 264.15 | 1/64 | | 171X |
| AO | OVERHEAD BREAK | Task | AIRWORK | | | |
| Raptor 1 | Training | 4x F-16C | 134.0 | 1/64 | | 162X |
| AO | SA10 | Task | DEAD | | | |
| T-Rex 2 | Training | 2x A-10C | 132.25 | 1/64 | 25 | 165X |
| AO | Convoy Hunt Training Range | Task | Dumb Rockets | | | |
| Edelweiss 3 | Training | 1x F-16C | 264.35 | 31/94 | | 173X |
| AO | | Task | | | | |
| Monster 2 | Training | 3x A-10C | 132.15 | 1/64 | 21 | 165X |
| AO | Convoy Hunt Training Range | Task | Dumb Rockets | | | |
| Hammer 3 | Training | 4x AH-64D | 133.5 | 1/64 | | 157X |
| AO | CAS Range | Task | | | | |
| Tiger 1 | Training | 2x F/A-18C | 261.15 | 1/64 | 1 | 155X |
| AO | | Task | Hunter/Killer Training SA2/SAX Range | | | |

RADIO CHANNELS

| # | Freq | Name |
|----|---------|-----------------------------|
| 1 | | Flight/Squadron specific |
| 2 | 288.2 | Akrotiri ATIS |
| 3 | 240.1 | Akrotiri Ground |
| 4 | 339.85 | Aktrotiri Tower |
| 5 | 335.05 | Akrotiri Approach |
| 6 | 360.1 | Incirlik Tower |
| 7 | 371.35 | Incirlik Ground |
| 8 | 377.475 | Incirlik ATIS |
| 9 | | No Preset |
| 10 | 127.3 | Paphos ATIS |
| 11 | 353.8 | Paphos Tower |
| 12 | 304.0 | CVN-73 George Washington |
| 13 | 302.0 | LHA-1 Tarawa |
| 14 | 259.0 | CV-59 Forrestal |
| 15 | | No Preset |
| 16 | 377.8 | Overlord |
| 17 | 265.0 | KC-135 Texaco-1 medium/slow |
| 18 | 319.8 | KC-135 Arco-1 |
| 19 | 360.8 | KC-135MPRS Arco-2 |
| 20 | 256.0 | S-3B Recovery Tanker |

RAMROD

| | | | | | | | | | |
|---|---|---|---|---|---|---|---|---|---|
| 0 | 1 | 2 | 3 | 4 | 5 | 6 | 7 | 8 | 9 |
| P | O | L | Y | G | A | M | I | S | T |

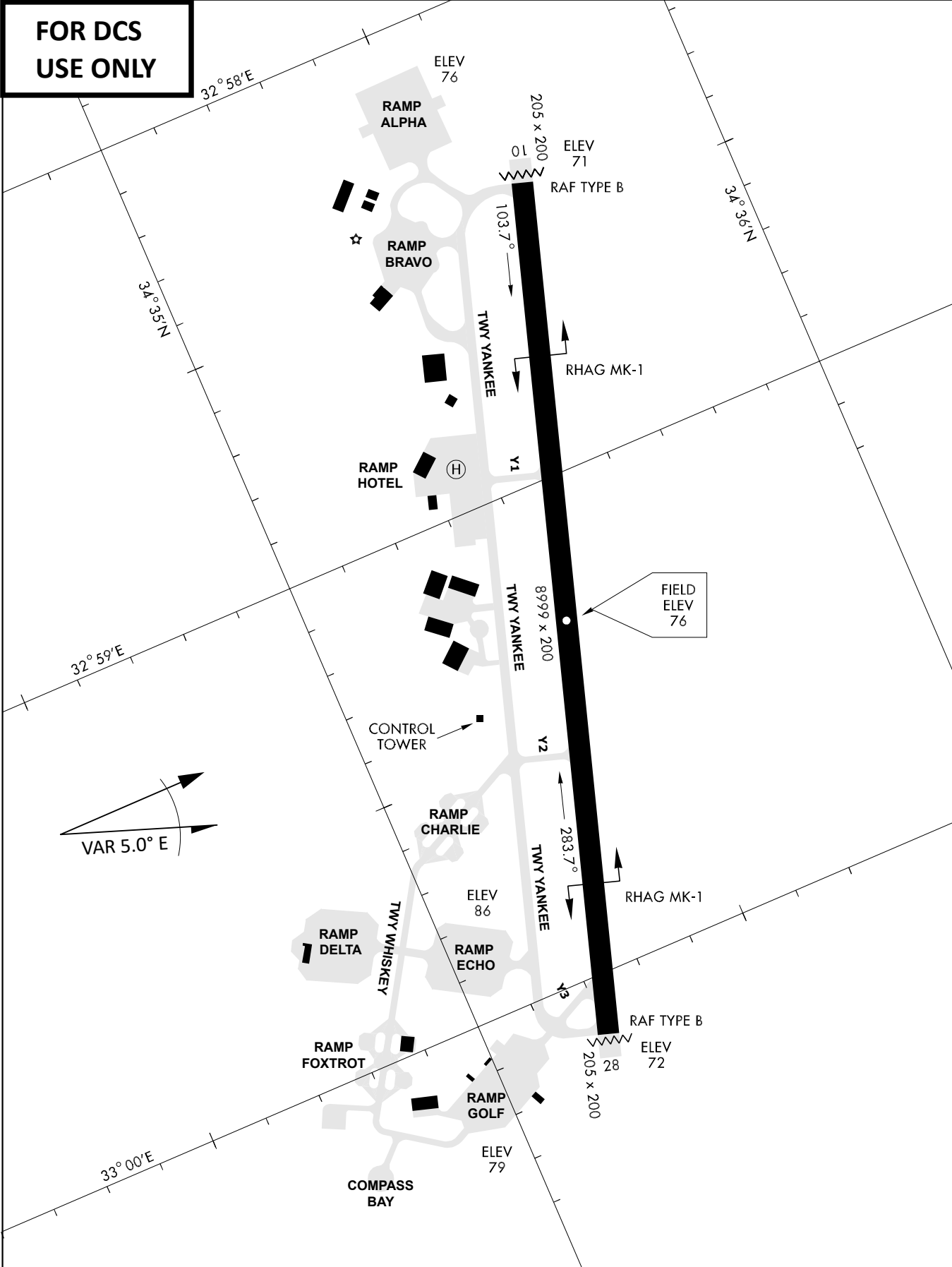
KTC 1400 C

| | 0 | 1 | 2 | 3 | 4 | 5 | 6 | 7 | 8 | 9 |
|---|------|-----|-----|----|----|-----|----|----|----|----|
| A | BMXI | QOR | GTU | FJ | SH | NYA | LK | VW | EP | DC |
| B | TIYC | LAS | BDV | FO | GH | JUW | KQ | NM | XR | PE |
| C | KATJ | UVY | WDQ | NH | FO | RIP | LE | SB | MC | GX |
| D | EKRV | WLB | IXC | DY | JG | PAN | OQ | HU | TS | FM |
| E | NHEL | PMD | AXK | VB | YT | UJW | OF | GI | SQ | RC |
| F | SGLJ | EVH | WAP | DR | QI | YXT | FB | CN | MU | OK |
| G | MHDR | BJU | TOW | YG | EV | KAP | LC | XI | SF | NQ |
| H | DPJI | YQS | FEU | WN | MA | THC | BK | GO | VL | RX |
| I | IOYV | MAG | DUN | QJ | HS | EBR | PK | LF | CT | XW |
| J | WCLD | NUP | YKS | QB | HE | FGO | JX | RI | VT | MA |
| K | VNRF | CMI | OUW | BL | HY | SXE | QG | PJ | AD | TK |
| L | JHSN | PCU | ILR | VO | QE | MDY | AB | GW | FT | XK |
| M | QETX | UVY | MHG | ID | SO | BKF | NL | CA | JR | PW |
| N | IUPB | RQM | VNE | GL | FS | DYH | KW | JT | XO | CA |
| O | SEQL | GVU | DHY | WF | BM | KCJ | PN | IR | TO | AX |
| P | TDAV | QLK | RSM | UX | GW | CFE | BN | OH | YP | JI |
| Q | NYFB | GUQ | IHW | OJ | DC | MTL | AE | XS | VK | PR |
| R | ARIL | KSV | GWB | EQ | OJ | MDU | CY | FP | HN | XT |
| S | VMQC | GPX | EON | YS | IJ | BLR | HT | KW | FA | UD |
| T | HLUK | SCW | JYX | FQ | BT | IEV | RP | GN | AO | MD |
| U | RUTI | AMV | QGE | JL | SF | CPN | HB | OD | YW | KX |
| V | PQMV | WHR | SOB | GY | EK | ICA | TL | DX | UF | JN |
| W | FLCS | WMU | NXG | OE | VQ | TBH | JI | KD | PR | AY |
| X | UKYW | OHV | BJX | FP | ER | MSQ | NI | DC | AG | TL |
| Y | URBF | QLI | TNH | GY | EM | CJS | PK | OW | VA | DX |

NAVAIDS

| Id | Name | Channel | Position | Elevation |
|-----------|---|----------------|------------------------|------------------|
| DAN | Incirlik | 21 | N37 00.950 E035 26.883 | 243 |
| AKR | Akrotiri | 107 | N34 34.765 E032 57.769 | 147 |
| PHA | Paphos | 79 | N34 42.997 E032 28.963 | 35 |
| RMD | Ramat David | 84 | N32 39.892 E035 11.265 | 136 |
| OS66 | Kuweires Military Aviation Institute | 36 | N36 11.362 E037 34.226 | 1200 |

**FOR DCS
 USE ONLY**

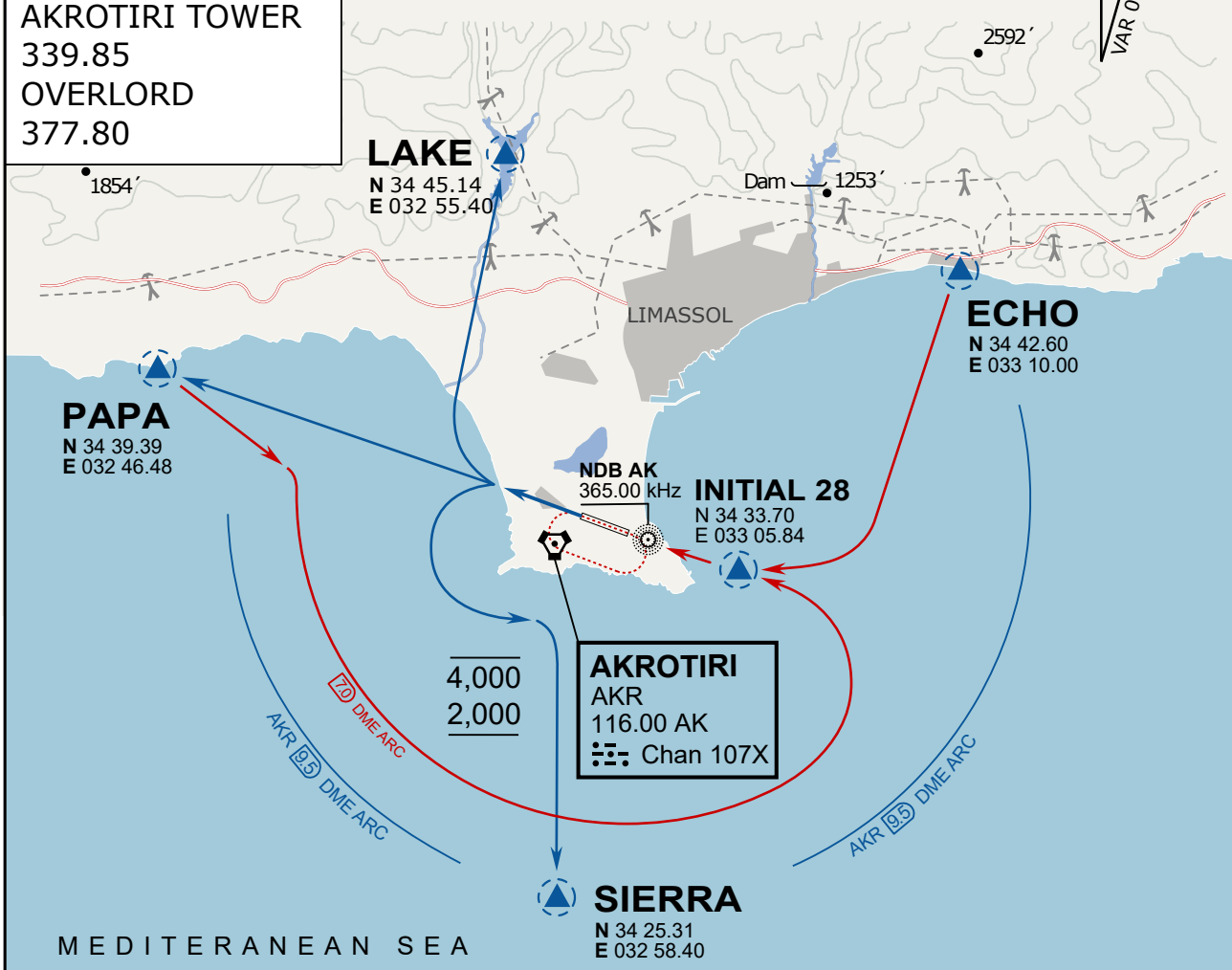


| ATIS | AKROTIRI GND | AKROTIRI TWR | OVERLORD CONTROL | TACAN | FIELD ELEVATION |
|------------|-----------------|------------------|------------------|----------|-----------------------|
| 288.20 MHz | 240.10 122.10 | 339.85 130.075 | 377.8 | AKR 107X | 75 [ft] 23 [m] |

ATIS
288.20
AKROTIRI GROUND
240.10
AKROTIRI TOWER
339.85
OVERLORD
377.80

NOT FOR CIVIL USE

CAUTION: If unable to comply with restrictions advise ATC prior to departure.



ARR / DEP ROUTE DESCRIPTION

STRAIGHT-IN RWY28

Pass ENTRY at 5.000' MSL or below, pass INITIAL at 1.500' MSL or below.

OVERHEAD BREAK RWY28

Pass ENTRY at 5.000' MSL or below, pass INITIAL at 2.000' MSL, break to the south.

DEPARTURE GENERAL

Pass Departure end of runway at 1.000' or below.

DEP RWY28 PAPA: Fly straight ahead to exit.

DEP RWY28 LAKE: Fly straight ahead until coast, than right turn direct exit.

DEP RWY28 SIERRA: Fly straight ahead until coastline, then climbing left turn, intercept AKR R-180 to exit.

DEP ECHO: no exit.

ATIS

288.20

AKROTIRI GROUND

240.10

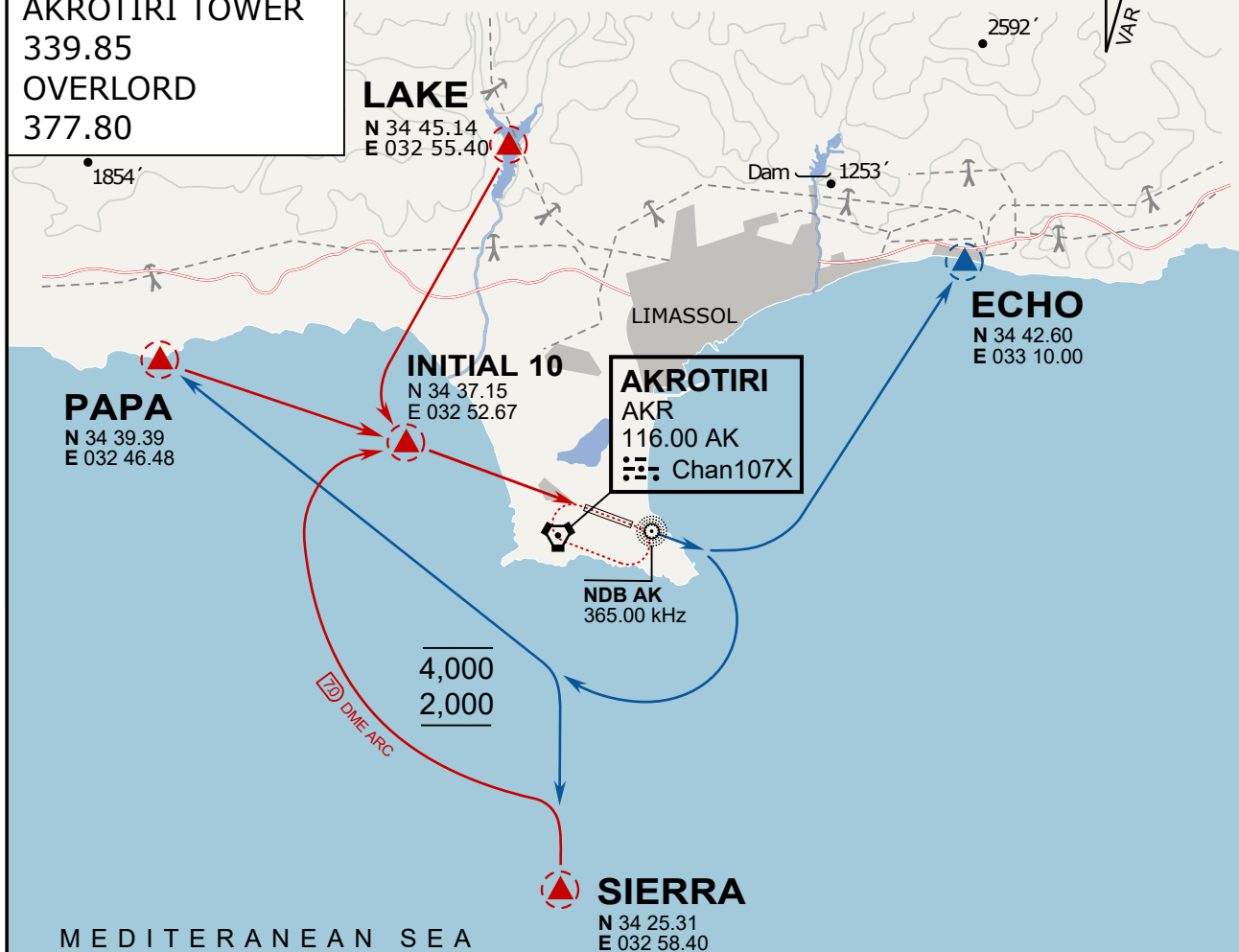
AKROTIRI TOWER

339.85

OVERLORD

377.80

NOT FOR CIVIL USE

CAUTION: If unable to comply
with restrictions advise ATC
prior to departure.

ARR / DEP ROUTE DESCRIPTION

ARRIVAL GENERAL

Pass Entry at 5.000' or below. Overhead Brake RWY 10: pass INITIAL 10 at 2.000' MSL.
Straight-in RWY 10 : pass INITIAL 1.500' or below.

ARR RWY10 PAPA / LAKE: Direct initial.

ARR RWY10 SIERRA: Intercept ARC 7 of AKR to INITIAL 10.

ARR ECHO: no ENTRY.

DEPARTURE GENERAL

Pass Departure end of runway at 1.000' AGL or below. Keep RWY heading until coastline.

DEP RWY10 ECHO: Direct EXIT.

DEP RWY10 SIERRA: Climbing right turn, intercept R180 AKR to Sierra.

DEP RWY10 PAPA: Climbing right turn until R180 AKR, then direct Papa

DEP LAKE: no EXIT.