

MISSION DATA CARD

OPORD		Callsign		Mission		Date/Time		
2902/2024		Edelweiss 1		Training		162030MAY24		
Task	AIRWORK					Freq		
AO	OVERHEAD BREAK					264.15		
Departure				Recovery				
RWY10 VFR				RWY28 VFR				
#	Callsign		Pilot		IFF	TCN	LSR	NET
-1	Edelweiss 1-1		Like		1711	1Y	1711	
-2	Edelweiss 1-2		Phil		1712	64Y	1712	

LOADOUT

A/A	2xA9X				GUN	100% HEI-T	
A/G					CHF	120	
POD					FLR	0	
TKS	FPU-8A				FUEL	100%	

TOLD

	Takeoff	Target	Joker	Bingo	Land
FUEL	13047				

AIRBASES

	Name	TCN	ATIS	GND	TWR	RWY	Elev	ILS
Dep	Akrotiri AFB	107X	288.2	240.1	339.85	28	62	109.7
Arr	Akrotiri AFB	107X	288.2	240.1	339.85	28	62	109.7

FLIGHTPLAN

#	Name	Navaid/Coords/DME	ALT	TOT
1	SIERRA	N34 24 35.912 E032 57 53.963	5000	
2	APLON	N33 51 59.989 E032 04 00.008	15000	
3	VELOX	N33 49 01.146 E034 05 02.950	15000	
4	ECHO	N34 42.600 E033 10	4000	
5	INITIAL 28	N34 33 42 E033 05 50.400	2000	
6	SIERRA	N34 25 18.599 E032 58 23.999	4000	
7	INITIAL 10	N34 37.150 E033 52.670	2000	
8	RAF Akrotiri	N34 35 26 E032 59 17	62	

COMMS

Radio	Usage
1	3,4,16,4,3
2	264.15
3	22
4	377.8

OTHER FLIGHTS

Callsign	Mission	Airframe	Freq	TCN	Grpld	Laser
Nazgul 6	BAI	4x F-15E	262.45	1/64		156X
AO	Akamas Bomb Range	Task	Buddy Lasing Training			
Raptor 1	Training	4x F-16C	134.0	1/64		162X
AO	SA10	Task	DEAD			
T-Rex 2	Training	2x A-10C	132.25	1/64	25	165X
AO	Convoy Hunt Training Range	Task	Dumb Rockets			
Edelweiss 3	Training	1x F-16C	264.35	31/94		173X
AO		Task				
Monster 2	Training	3x A-10C	132.15	1/64	21	165X
AO	Convoy Hunt Training Range	Task	Dumb Rockets			
Hammer 3	Training	4x AH-64D	133.5	1/64		157X
AO	CAS Range	Task				
Tiger 1	Training	2x F/A-18C	261.15	1/64	1	155X
AO		Task	Hunter/Killer Training SA2/SAX Range			

RADIO CHANNELS

#	Freq	Name
1		Flight/Squadron specific
2	288.2	Akrotiri ATIS
3	240.1	Akrotiri Ground
4	339.85	Aktrotiri Tower
5	335.05	Akrotiri Approach
6	360.1	Incirlik Tower
7	371.35	Incirlik Ground
8	377.475	Incirlik ATIS
9		No Preset
10	127.3	Paphos ATIS
11	353.8	Paphos Tower
12	304.0	CVN-73 George Washington
13	302.0	LHA-1 Tarawa
14	259.0	CV-59 Forrestal
15		No Preset
16	377.8	Overlord
17	265.0	KC-135 Texaco-1 medium/slow
18	319.8	KC-135 Arco-1
19	360.8	KC-135MPRS Arco-2
20	256.0	S-3B Recovery Tanker

RAMROD

0	1	2	3	4	5	6	7	8	9
P	O	L	Y	G	A	M	I	S	T

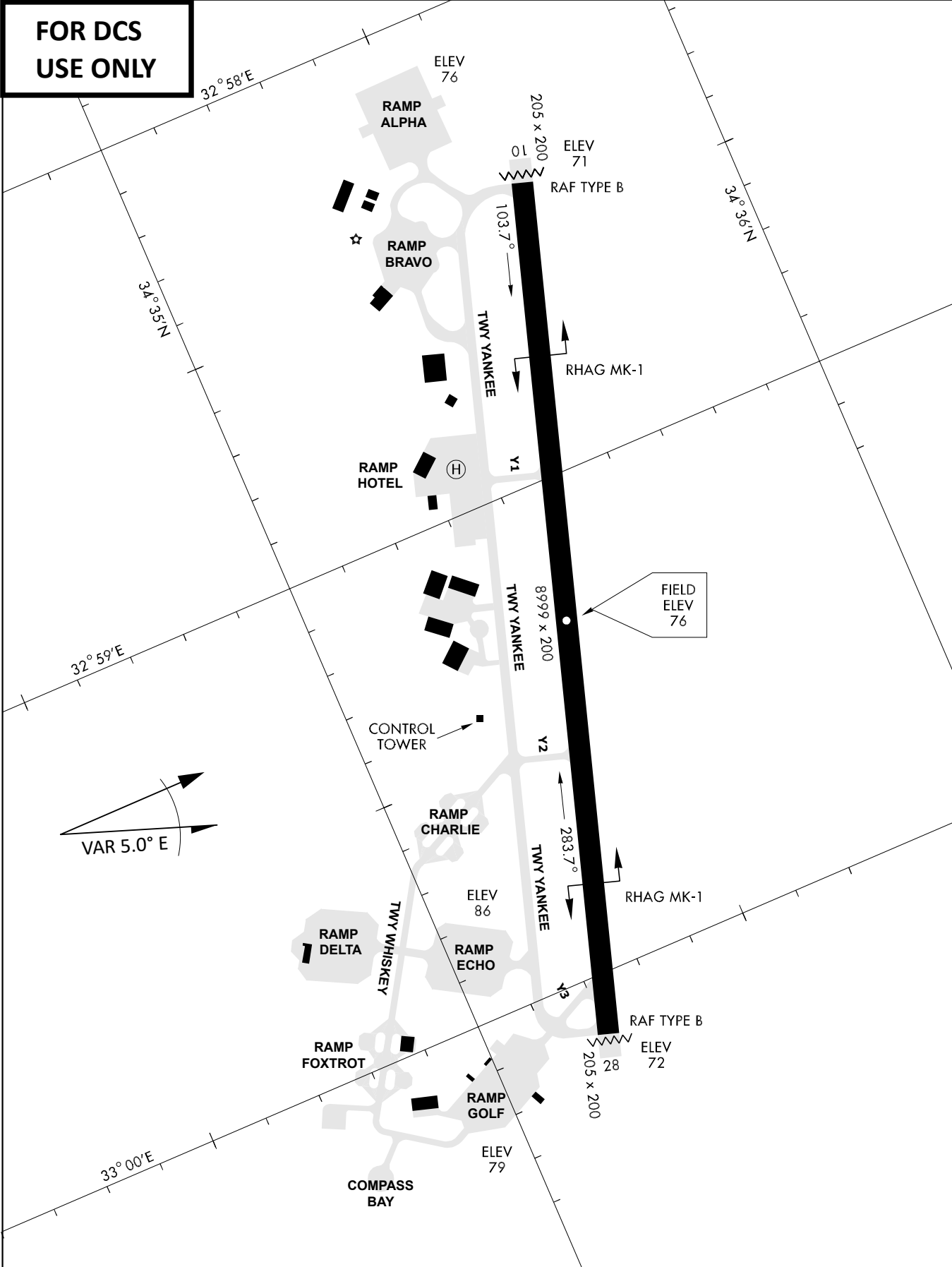
KTC 1400 C

	0	1	2	3	4	5	6	7	8	9
A	BMXI	QOR	GTU	FJ	SH	NYA	LK	VW	EP	DC
B	TIYC	LAS	BDV	FO	GH	JUW	KQ	NM	XR	PE
C	KATJ	UVY	WDQ	NH	FO	RIP	LE	SB	MC	GX
D	EKRV	WLB	IXC	DY	JG	PAN	OQ	HU	TS	FM
E	NHEL	PMD	AXK	VB	YT	UJW	OF	GI	SQ	RC
F	SGLJ	EVH	WAP	DR	QI	YXT	FB	CN	MU	OK
G	MHDR	BJU	TOW	YG	EV	KAP	LC	XI	SF	NQ
H	DPJI	YQS	FEU	WN	MA	THC	BK	GO	VL	RX
I	IOYV	MAG	DUN	QJ	HS	EBR	PK	LF	CT	XW
J	WCLD	NUP	YKS	QB	HE	FGO	JX	RI	VT	MA
K	VNRF	CMI	OUW	BL	HY	SXE	QG	PJ	AD	TK
L	JHSN	PCU	ILR	VO	QE	MDY	AB	GW	FT	XK
M	QETX	UVY	MHG	ID	SO	BKF	NL	CA	JR	PW
N	IUPB	RQM	VNE	GL	FS	DYH	KW	JT	XO	CA
O	SEQL	GVU	DHY	WF	BM	KCJ	PN	IR	TO	AX
P	TDAV	QLK	RSM	UX	GW	CFE	BN	OH	YP	JI
Q	NYFB	GUQ	IHW	OJ	DC	MTL	AE	XS	VK	PR
R	ARIL	KSV	GWB	EQ	OJ	MDU	CY	FP	HN	XT
S	VMQC	GPX	EON	YS	IJ	BLR	HT	KW	FA	UD
T	HLUK	SCW	JYX	FQ	BT	IEV	RP	GN	AO	MD
U	RUTI	AMV	QGE	JL	SF	CPN	HB	OD	YW	KX
V	PQMV	WHR	SOB	GY	EK	ICA	TL	DX	UF	JN
W	FLCS	WMU	NXG	OE	VQ	TBH	JI	KD	PR	AY
X	UKYW	OHV	BJX	FP	ER	MSQ	NI	DC	AG	TL
Y	URBF	QLI	TNH	GY	EM	CJS	PK	OW	VA	DX

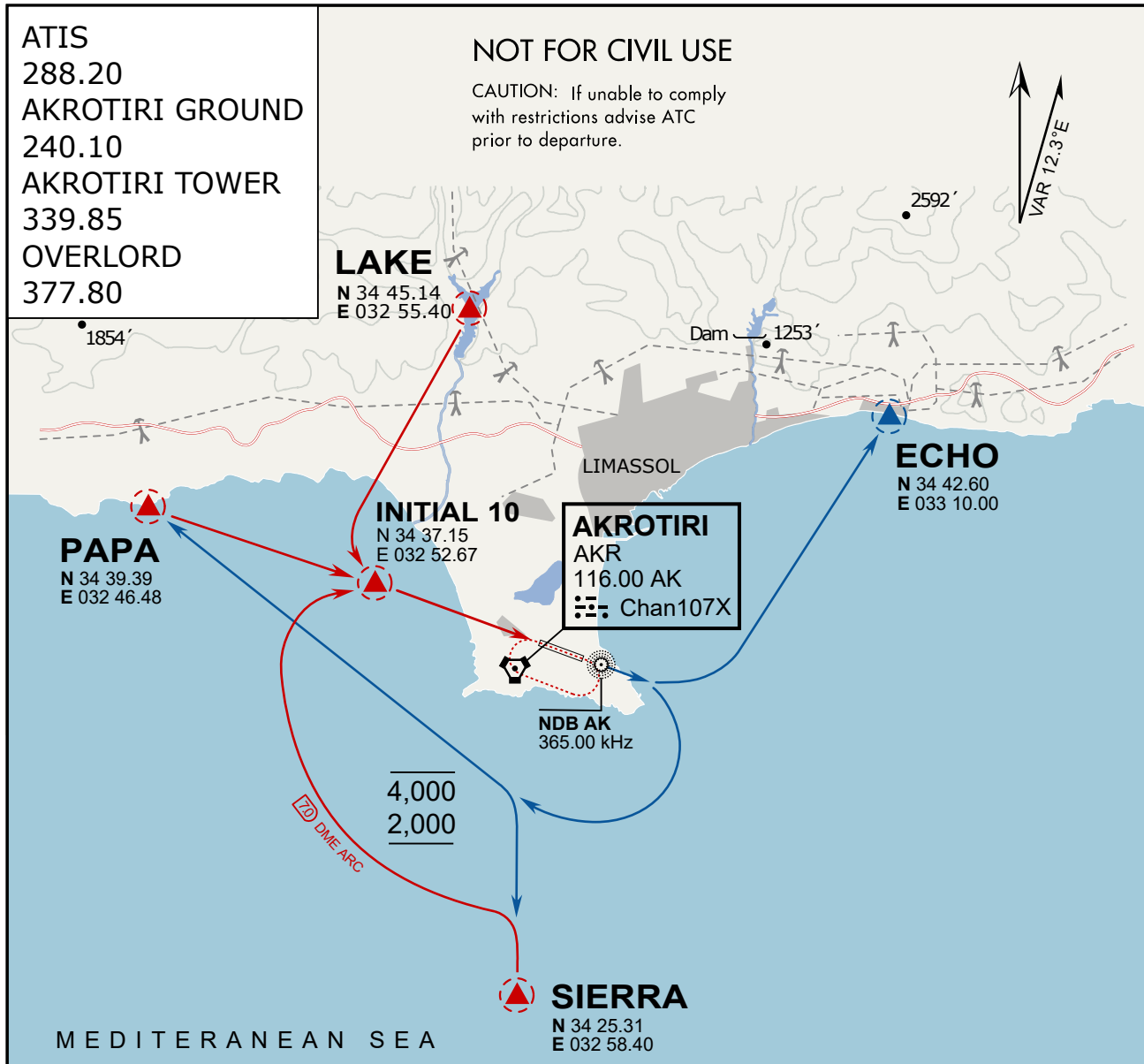
NAVAIDS

Id	Name	Channel	Position	Elevation
DAN	Incirlik	21	N37 00.950 E035 26.883	243
AKR	Akrotiri	107	N34 34.765 E032 57.769	147
PHA	Paphos	79	N34 42.997 E032 28.963	35
RMD	Ramat David	84	N32 39.892 E035 11.265	136
OS66	Kuweires Military Aviation Institute	36	N36 11.362 E037 34.226	1200

**FOR DCS
 USE ONLY**



ATIS	AKROTIRI GND	AKROTIRI TWR	OVERLORD CONTROL	TACAN	FIELD ELEVATION
288.20 MHz	240.10 122.10	339.85 130.075	377.8	AKR 107X	75 [ft] 23 [m]



ARR / DEP ROUTE DESCRIPTION

ARRIVAL GENERAL

Pass Entry at 5.000' or below. Overhead Brake RWY 10: pass INITIAL 10 at 2.000' MSL.
Straight-in RWY 10 : pass INITIAL 1.500' or below.

ARR RWY10 PAPA / LAKE: Direct initial.

ARR RWY10 SIERRA: Intercept ARC 7 of AKR to INITIAL 10.

ARR ECHO: no ENTRY.

DEPARTURE GENERAL

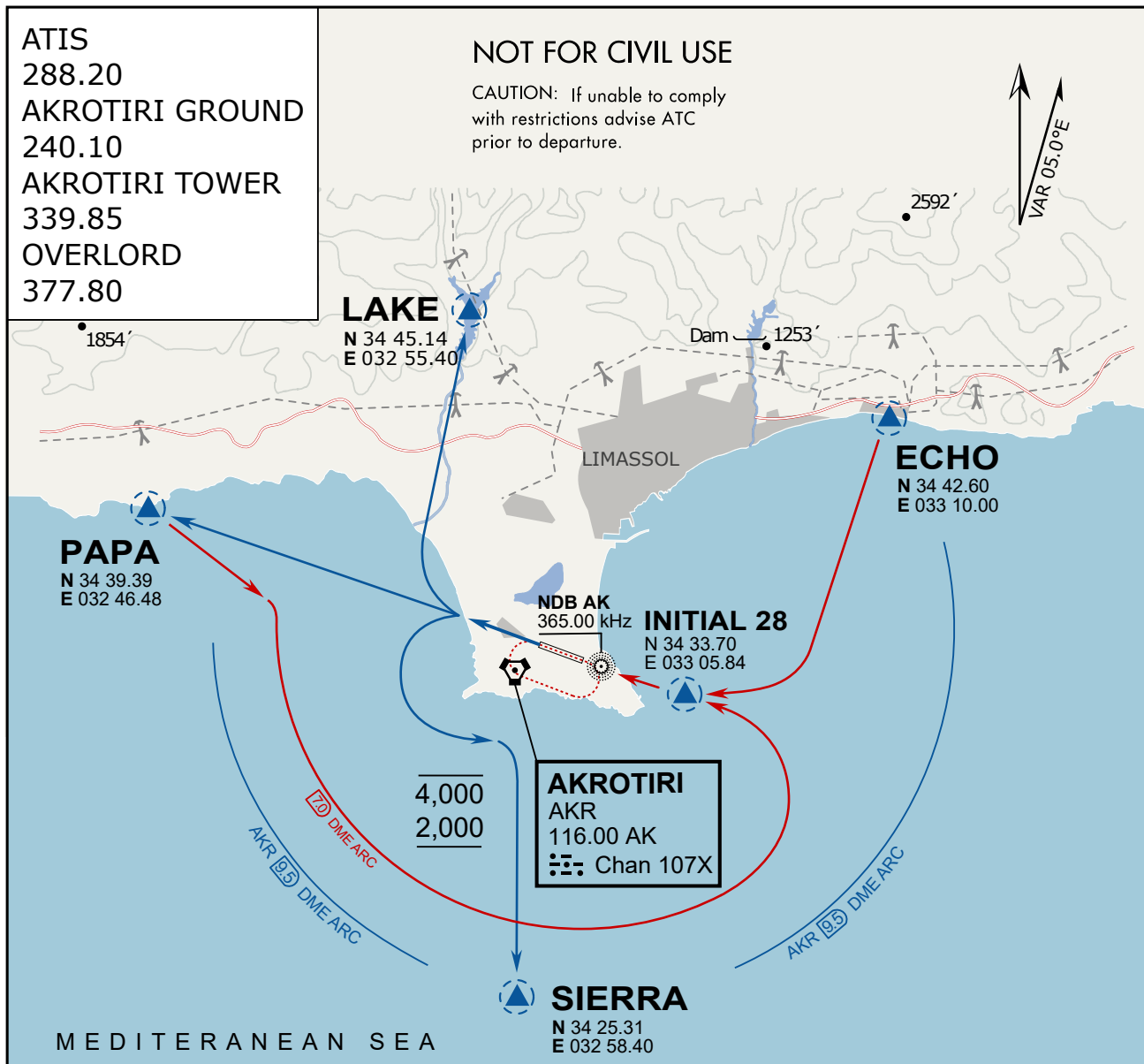
Pass Departure end of runway at 1.000' AGL or below. Keep RWY heading until coastline.

DEP RWY10 ECHO: Direct EXIT.

DEP RWY10 SIERRA: Climbing right turn, intercept R180 AKR to Sierra.

DEP RWY10 PAPA: Climbing right turn until R180 AKR, then direct Papa

DEP LAKE: no EXIT.



ARR / DEP ROUTE DESCRIPTION

STRAIGHT-IN RWY28

Pass ENTRY at 5.000' MSL or below, pass INITIAL at 1.500' MSL or below.

OVERHEAD BREAK RWY28

Pass ENTRY at 5.000' MSL or below, pass INITIAL at 2.000' MSL, break to the south.

DEPARTURE GENERAL

Pass Departure end of runway at 1.000' or below.

DEP RWY28 PAPA: Fly straight ahead to exit.

DEP RWY28 LAKE: Fly straight ahead until coast, than right turn direct exit.

DEP RWY28 SIERRA: Fly straight ahead until coastline, then climbing left turn, intercept AKR R-180 to exit.

DEP ECHO: no exit.