

MISSION DATA CARD

OPORD		Callsign		Mission		Date/Time		
2894/2024		Tiger 1		Training		152000MAY24		
Task	66 - IFR					Freq		
AO						261.15		
Departure				Recovery				
FYTTR THREE				HI-TACAN Z RWY 21L				
#	Callsign		Pilot		IFF	TCN	LSR	NET
-1	Tiger 1-1		Ghost		1211	1Y	1511	01/01

LOADOUT

A/A	2xA9X, A120C				GUN	100% HEI-T	
A/G					CHF	90	
POD	TGP				FLR	30	
TKS	2xFPU-8A				FUEL	100%	

TOLD

	Takeoff	Target	Joker	Bingo	Land
FUEL	15291			4000	2000

AIRBASES

	Name	TCN	ATIS	GND	TWR	RWY	Elev	ILS
Dep	Nellis AFB	12X	270.1	275.8	327.0	21L	1850	109.1
Arr	Nellis AFB	12X	270.1	275.8	327.0	21L	1850	109.1
Div	Nellis AFB	12X	270.1	275.8	327.0	21L	1850	109.1

FLIGHTPLAN

#	Name	Navaid/Coords/DME	ALT	TOT
1	FYTTR	N36 21 26.211 W115 41 28.144	14000	
2	Beatty	N36 48 02.045 W116 44 51.383	20000	
3	Tonopah Test Range	N37 48 08.444 W116 46 31.727	25000	
4	BIGHORN	N37 52 W115 01 60	25000	
5	DREAM	N37 10 20.400 W114 59 31.800	20000	
6	ARCOE	N36 44 15.600 W114 55 01.200	15000	
7	Kutme	N36 33 48.847 W114 41 08.492	8800	
8	Nellis AFB	N36 13 32 W115 02 37	1843	

NOTES

Circ Del 289.900

Ground 275.900

Tower 327.100

Departure 335.400

CENTER 343.700

Approach 273.650

Weather: expect OVC 6000, Wind tbd?

--- Lola

Dream 4 JUNNO/MINTT (9)

HI TACAN Z 21L (19)

FYTTR 3 (36)

HI TACAN Y 21L (37)

OTHER FLIGHTS

Callsign	Mission	Airframe	Freq	TCN	Grpld	Laser
Panther 7	Training	1x F/A-18C	261.35	1/64		157X
AO		Task	66 - IFR			
Nazgul 6	Training	4x F-15E	262.45	1/64	40	166X
AO	North of Nellis AFB	Task	66 - IFR Rumble			
Rattler 5	Training	4x AH-64D	133.5	1/64		125X
AO	Nellis	Task	IFR Rumble			
Nazgul 7	Training	4x F-15E	262.45	1/64		156X
AO		Task	vJaboG66-IFR Rumble			
Zapper* 1	Training	1x A-10C	264.05	1/64		170X
AO	Nellis	Task	IFR Rumble			
Raptor 1	Training	4x F-16C	134.0	1/64	40	166X
AO	North of Nellis AFB	Task	66 - IFR Rumble			

RADIO CHANNELS

#	Freq	Name
1		Flight/Squadron specific
2	289.4	Nellis Clearance Delivery
3	275.8	Nellis Ground
4	327.0	Nellis Tower
5	385.4	Nellis Approach/Departure West
6	273.55	Nellis Approach/Departure East
7	317.525	Nellis Control -- Sally
8	254.4	Nellis Control-- Lee
9	305.6	SOF Bullseye
10	343.725	EMERGENCY SINGLE FRQ
11	270.1	Nellis ATIS
12	360.625	Creech AFB Tower
13	250.1	HAVE QUICK 13
14	251.1	HAVE QUICK 14
15	252.1	HAVE QUICK 15
16	377.8	Blackjack
17	265.0	KC-135 AR-641A
18	360.8	KC-135MPRS AR-635
19	319.8	KC-135MPRS AR-625
20	300.05	KC-135 AR-231V

RAMROD

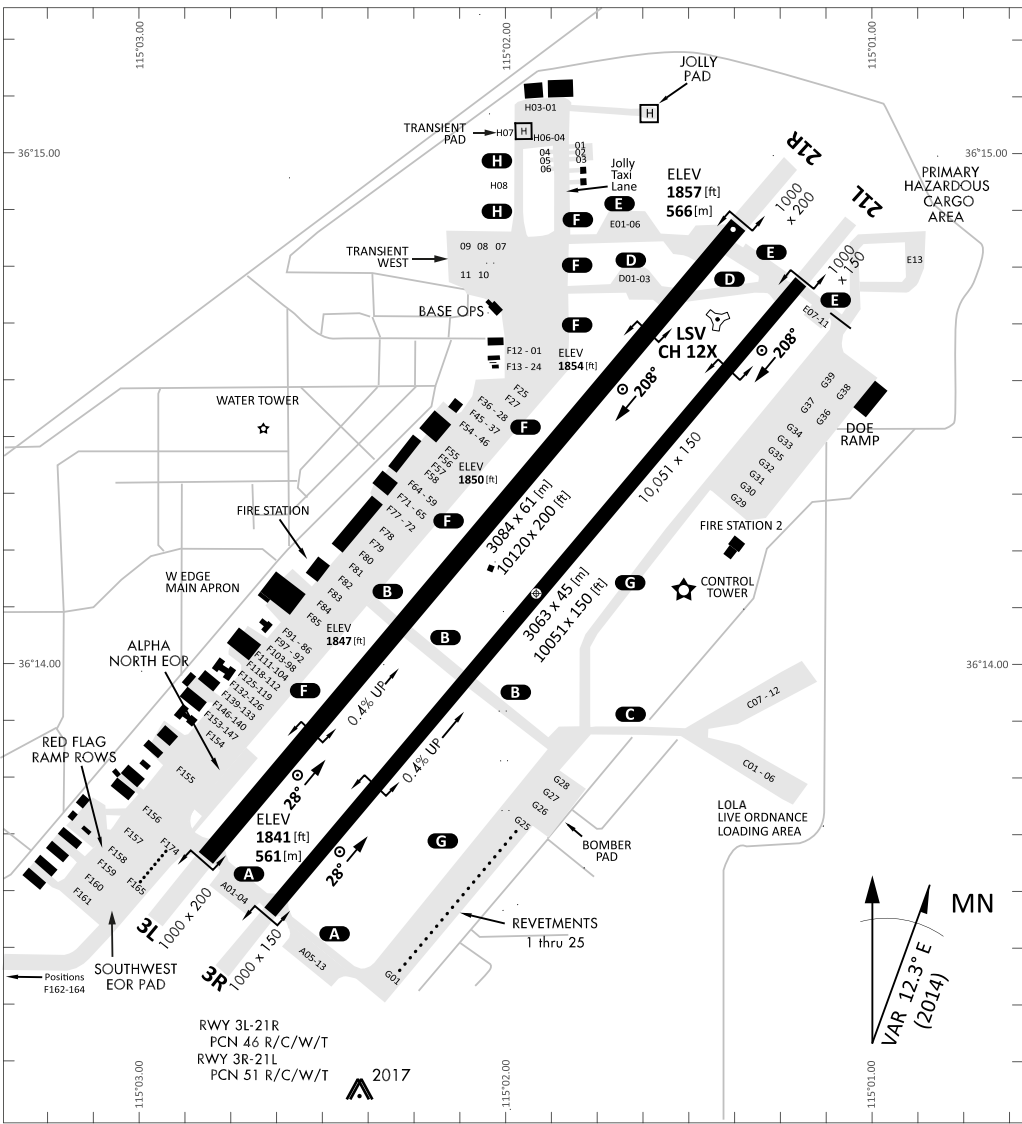
0	1	2	3	4	5	6	7	8	9
I	M	P	R	O	V	A	B	L	E

KTC 1400 C

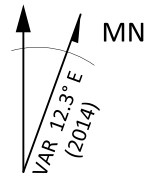
	0	1	2	3	4	5	6	7	8	9
A	SQJL	DOI	PRY	XH	NW	KCV	EF	BA	GT	MU
B	GUQJ	WFM	VKH	XA	PB	ERL	CO	NI	YD	TS
C	FOUQ	JCV	XGY	AK	HP	BDM	LR	EI	SW	TN
D	HEGU	JTX	YDF	WM	KN	QSA	LP	VO	CB	RI
E	SVQP	KEF	NDO	HX	CU	GMW	TI	BY	JA	LR
F	NPOM	RGK	CEB	YF	HW	IJL	QT	VS	XA	DU
G	NEIL	RDY	OUP	BV	KH	GTM	WQ	JC	AS	FX
H	EAJM	IPG	HVO	RC	SY	LKT	UN	BQ	XF	DW
I	RODP	HMI	VTX	JW	EA	FUK	SQ	NG	CL	BY
J	XENV	TUI	SLK	HJ	YW	QCA	GB	MP	DO	FR
K	AYIR	OCM	EGV	HL	PT	DNK	SF	XB	WJ	QU
L	RVJH	IAL	FNG	BO	DQ	TYE	WC	SU	KP	XM
M	VPWD	HAF	CXO	JY	BG	ISQ	KN	ER	LM	UT
N	SATF	RIV	KOM	XQ	GJ	HNP	UE	LW	BC	DY
O	EUNL	CMX	OWR	VQ	BD	PAK	TG	IH	JF	YS
P	UOJY	KMD	AQI	CB	LR	EHT	FV	SN	XG	WP
Q	LFHQ	KVY	PMC	AW	SR	BDX	TJ	GO	EU	NI
R	FBDM	JIL	NEY	UO	RV	WAX	GK	PS	TH	CQ
S	SOGK	IER	UNM	JP	VQ	WFA	YL	CX	TH	DB
T	CKYX	UJO	MTA	SV	EB	QPF	IG	WD	HN	LR
U	JLKA	FGU	BXN	PM	EI	TVD	SO	QC	HY	RW
V	NVFT	OHW	SAY	QU	KG	IRB	JX	CP	LM	ED
W	BTCQ	YLM	WPJ	SO	KG	RAV	XH	EN	DI	FU
X	FXBP	CTI	KRD	LQ	SG	UEO	MV	YJ	WA	HN
Y	VLPJ	MDY	BHF	XG	QA	IST	RK	EU	CO	WN

NAVAIDS

Id	Name	Channel	Position	Elevation
BCE	Bryce Canyon	75	N3741.35 W11218.23	9040
BIH	Bishop	33	N3722.62 W11821.99	4114
BLD	Boulder	114	N3559.75 W11451.82	3650
BTY	Beatty	94	N3648.54 W11644.86	2925
CDC	Cedar City	120	N3747.24 W11304.90	5463
DAG	Daggett	79	N3457.75 W11634.69	1760
EED	Needles	99	N3445.96 W11428.43	650
GFS	Goffs	91	N3507.87 W11510.59	4019
GRL	Groom Lake	18	N3713.91 W11548.16	4475
HEC	Hector	74	N3447.83 W11627.78	1854
ILC	Wilson Creek	110	N3815.02 W11423.65	9318
INS	Creech AFB	87	N3635.20 W11540.12	3101
LAS	McCarran Intl	116	N3604.78 W11509.59	2142
LSV	Nellis	12	N3614.68 W11501.50	1864
MLF	Milford	58	N3821.62 W11300.79	4977
MMM	Mormon Mesa	90	N3646.16 W11416.65	2120
MVA	Mina	98	N3833.92 W11801.97	7860
OAL	Coale Dale	124	N3800.20 W11746.23	4800
PGS	Peach Springs	57	N3537.48 W11332.67	4754
TPH	Tonopah Muni	119	N3801.84 W11702.01	5330
TQQ	Silverbow	77	N3748.00 W11647.00	5500
UTI	St George	23	N3705.29 W11335.53	2871



RWY 3L-21R
 PCN 46 R/C/W/T
 RWY 3R-21L
 PCN 51 R/C/W/T
 2017



PAR	RWY	CAT	MINIMA		ARP	ELEV	Scale 1:35'500	
	21L	A B D E	2057 - 0.8 200 (200-0.8/1.6)	GS 3°	36° 14.060° N 115° 01.058° W	1857 [ft] 566 [m]	0 300 600 900 1200 1500 [m]	
	3R	A B D E	2057 - 0.8 200 (200-0.8/1.6)	GS 3°			0 1000 2000 3000 4000 5000 [ft]	
SRA	21R	A C D E	2257 - 1.2 350 (350-1.2/1.6)					
	3L	A C D E	2257 - 1.2 350 (350-1.2/1.6)					

RWY	TORA	TODA	ASDA	LDA	PSN	THR	ALS
21L	10051 [ft] 3063 [m]	11051 [ft] 3368 [m]	11051 [ft] 3368 [m]	10051 [ft] 3063 [m]	36°14.043' N	115°01.018' W	⊕
3R	10120 [ft] 3084 [m]	11120 [ft] 3398 [m]	11120 [ft] 3398 [m]	10120 [ft] 3084 [m]	36°13.029' N	115°02.038' W	

ATIS	NELLIS GROUND	NELLIS TOWER	NELLIS CONTROL	TACAN	ILS RWY 21L	NELLIS EAST	NELLIS WEST
270.100 MHz	275.800 121.800	327.000 132.55	317.525	LSV 12X	109.10 Mhz	384.400	385.000

FYTTR THREE DEPARTURE IFR CHART | VALID 2014 LAS VEGAS, NEVADA

ATIS
270.100
NELLIS GROUND
275.800
NELLIS TOWER
327.000
NELLIS CONTROL
317.525
NELLIS DEP/APP EAST
384.400
BLACKJACK
377.800

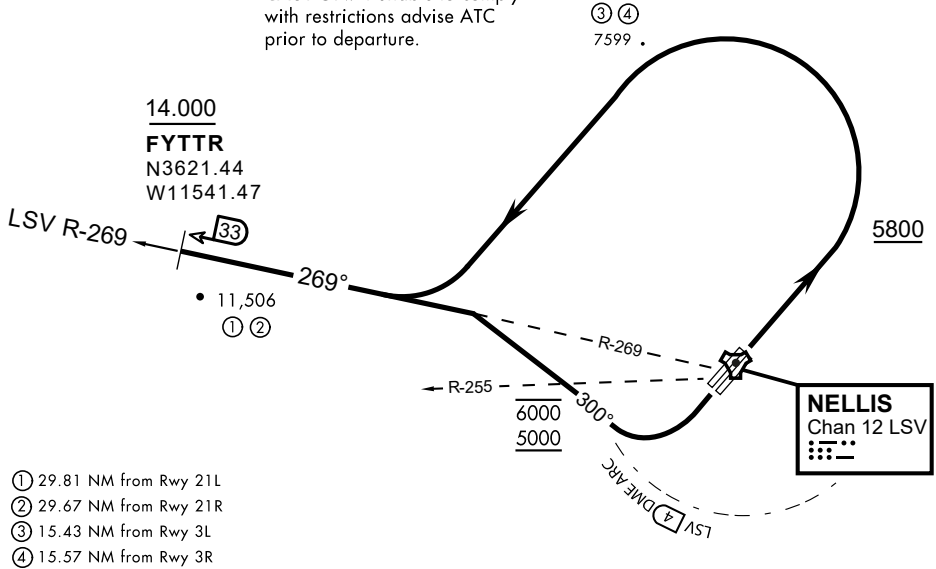


Rwy	Knots	60	120	180	240	300	360
3L (a)	V/V(fpm)	394	788	1182	1576	1970	2364
3R (a)	V/V(fpm)	392	784	1176	1568	1960	2352
21L (b)	V/V(fpm)	388	776	1164	1552	1940	2328
21R (b)	V/V(fpm)	390	780	1170	1560	1950	2340

Minimum Climb Rate

- (a) to 9300
- (b) to 13 500

CAUTION: If unable to comply with restrictions advise ATC prior to departure.



- (1) 29.81 NM from Rwy 21L
- (2) 29.67 NM from Rwy 21R
- (3) 15.43 NM from Rwy 3L
- (4) 15.57 NM from Rwy 3R

DEPARTURE ROUTE DESCRIPTION

TAKEOFF RWY 3L/R

- Fly runway heading until reaching 5,800'.
- Then climbing left turn to intercept LSV TACAN R-269 outbound.
- Cross FYTTR at or above 14,000' or as assigned, then via assigned route.

TAKEOFF RWY 21L/21R

- Turn right to intercept LSV TACAN R-269 outbound.
- Remain within LSV 4 DME until joining LSV R-269
- Cross R-255 between 5,000' and 6,000'.
- Cross FYTTR at or above 14,000' or as assigned, then via assigned route.

NOISE ABATEMENT PROCEDURES:

Fly according Nellis Noise Abatement instructions as published

HI-TACAN Z RWY 21L

TACAN LSV Chan 12	APCH CRS 210°	Rwy ldg 21L 10,051 TDZE 1865 Arprt Elev 1869	Rwy ldg 21R 10,120 TDZE 1869
-------------------	---------------	--	------------------------------

JAL-227 [USAF]

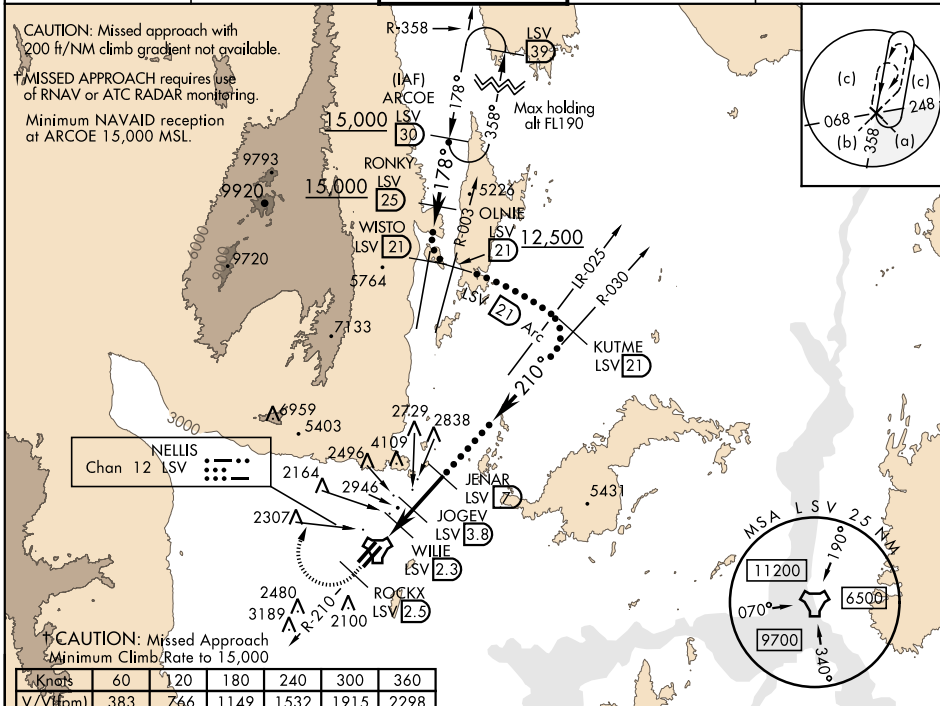
NELLIS AFB (KLSV)

▼* When ALS inop, increase CAT CDE vis to 1 1/4 miles.
 ** Circling not authorized E of Rwy 3R-21L.



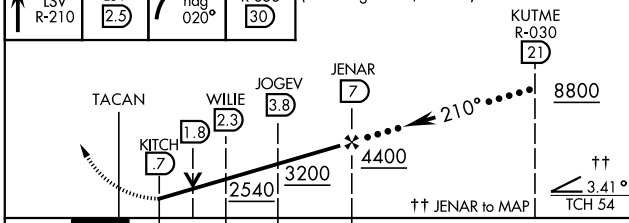
† MISSED APPROACH: Climb to 15,000, intercept LSV TACAN R-210 to 2.5 DME (ROCKX), then climbing right turn heading 020° to join LSV R-358 to ARCOE and hold, continue climb in hold to 15,000. Missed approach not for civil use.

ATIS 270.1	NELLIS APP CON 124.95 273.55	NELLIS TOWER 132.55 327.0	GND CON 121.8 275.8	CLNC DEL 120.9 289.4
------------	------------------------------	---------------------------	---------------------	----------------------

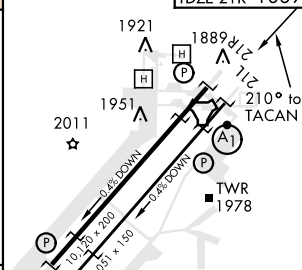


15,000 LSV R-210	ROCKX LSV 2.3	ARC OE R-358 30
------------------	---------------	-----------------

VGSI and descent angles not coincident (VGSI angle 3.00/TCH 54).



ELEV 1869	TDZE 21L 1865
	TDZE 21R 1869



CATEGORY	C	D	E
S-21L *	2460-1 1/4	595 (600-1 1/4)	
SIDESTEP 21R	2460-1	591 (600-1)	
CIRCLING **	2620-2 1/4 751 (800-2 1/4)	2840-3 971 (1000-3)	3040-3 1171 (1200-3)

HIRL all Rwy

HI-TACAN Z RWY 21L

SW-4, 05 DEC 2019 to 02 JAN 2020

SW-4, 05 DEC 2019 to 02 JAN 2020

HI-TACAN Y RWY 21L

TACAN LSV Chan 12	APCH CRS 210°	Rwy ldg 21L 10,051 TDZE 1865 Arprt Elev 1869	Rwy ldg 21R 10,120 TDZE 1869
-------------------	---------------	--	------------------------------

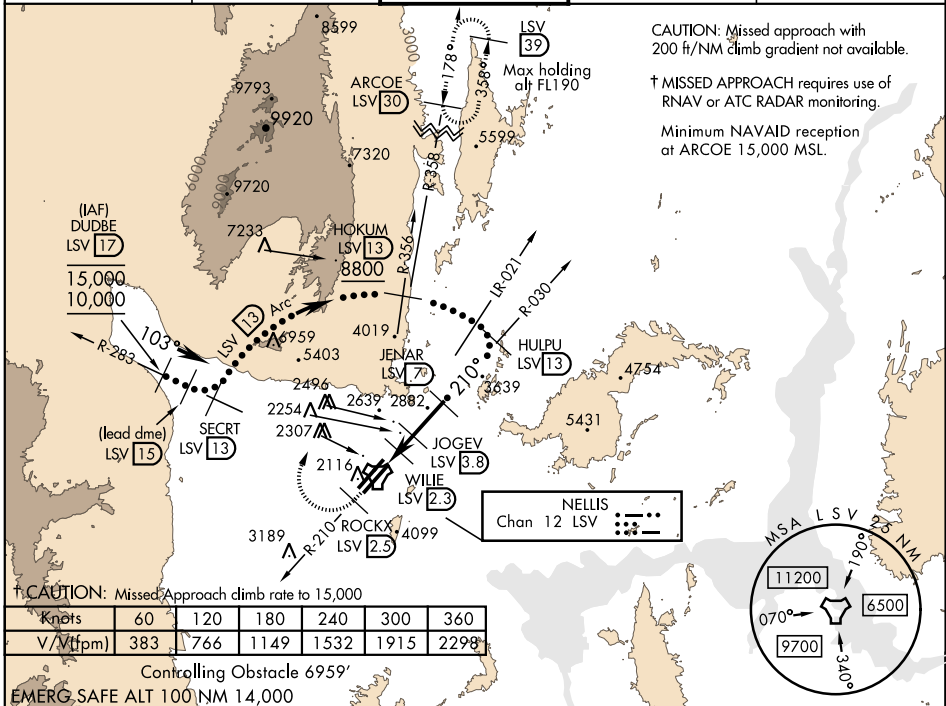
JAL-227 [USAF] NELLIS AFB (KLSV)

* When ALS inop, increase CAT CDE vis to 1 3/4 miles.
 ** Circling not authorized E of Rwy 3R-21L.



† MISSED APPROACH: Climb to 15,000, intercept LSV TACAN R-210 to 2.5 DME (ROCKX), then climbing right turn heading 020° to join LSV R-358 to ARCOE and hold, continue climb in hold to 15,000. Missed approach not for civil use.

ATIS 270.1	NELLIS APP CON 124.95 273.55	NELLIS TOWER 132.55 327.0	GND CON 121.8 275.8	CLNC DEL 120.9 289.4
------------	------------------------------	---------------------------	---------------------	----------------------



CAUTION: Missed approach with 200 ft/NM climb gradient not available.

† MISSED APPROACH requires use of RNAV or ATC RADAR monitoring.

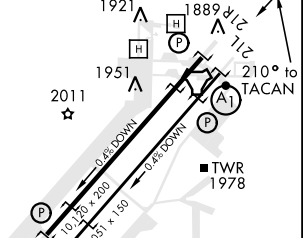
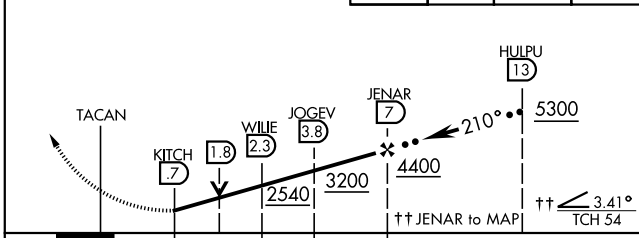
Minimum NAVAID reception at ARCOE 15,000 MSL.

† CAUTION: Missed Approach climb rate to 15,000

Knots	60	120	180	240	300	360
V/Vt (fpm)	383	766	1149	1532	1915	2298

Controlling Obstacle 6959'
EMERG. SAFE ALT 100 NM 14,000

VGSI and descent angles not coincident (VGSI angle 3.00/TCH 54).	15,000 LSV R-210	ROCKX LSV 2.5	hdg 020°	ARCOE R-358 30	ELEV 1869	TDZE 21L 1865	TDZE 21R 1869
--	------------------	---------------	----------	----------------	-----------	---------------	---------------



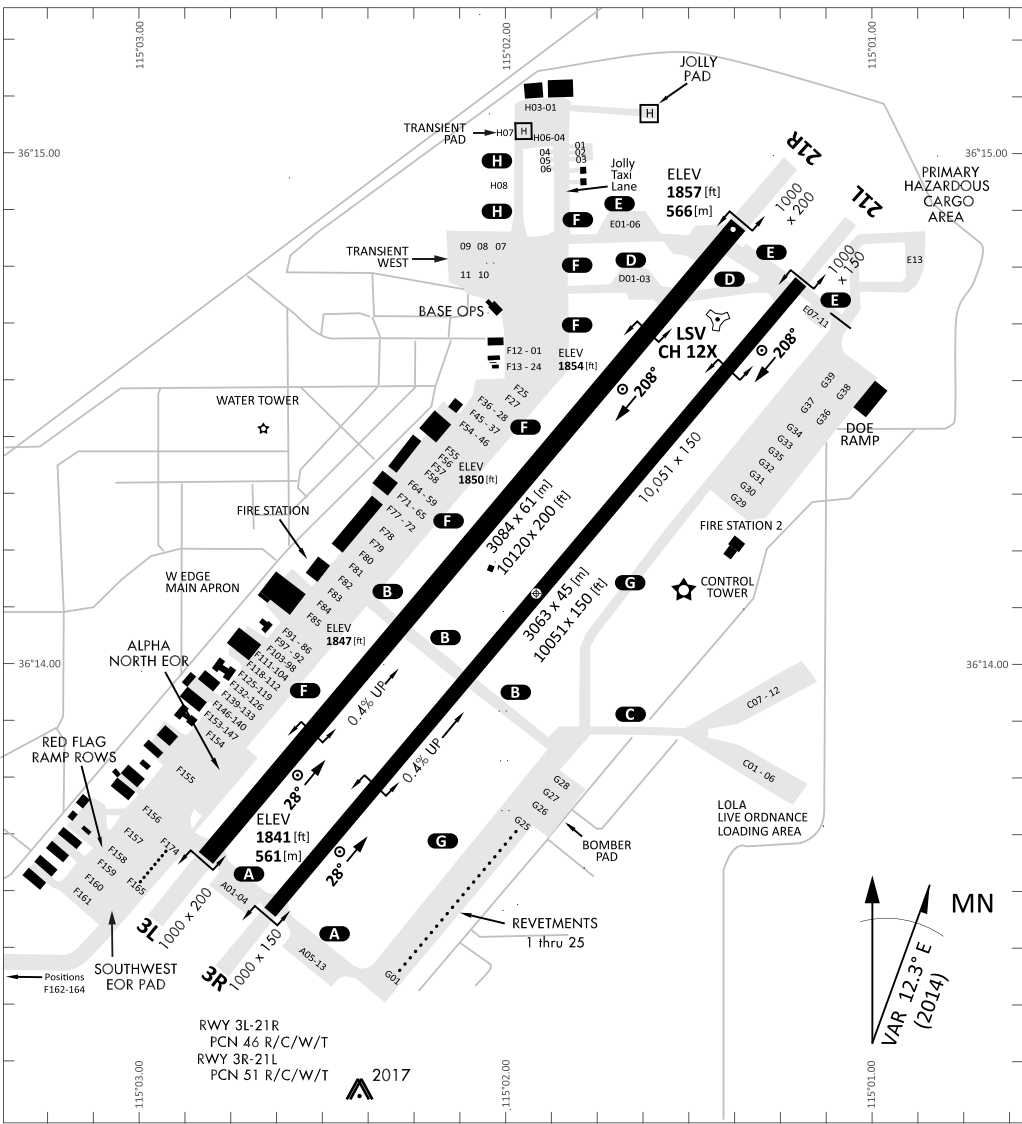
CATEGORY	C	D	E
S-21L *	2460-1 1/4	595 (600-1 1/4)	
SIDESTEP 21R	2460-1	591 (600-1)	
CIRCLING **	2620-2 1/4 751 (800-2 1/4)	2840-3 971 (1000-3)	3040-3 1171 (1200-3)

HIRL all Rwy

HI-TACAN Y RWY 21L

SW-4, 05 DEC 2019 to 02 JAN 2020

SW-4, 05 DEC 2019 to 02 JAN 2020



RWY 3L-21R
 PCN 46 R/C/W/T
 RWY 3R-21L
 PCN 51 R/C/W/T
 2017

PAR	RWY	CAT	MINIMA		ARP	ELEV	Scale 1:35'500	
	21L	A B D E	2057 - 0.8 200	(200-0.8/1.6) GS 3°	36° 14.060° N 115° 01.058° W	1857 [ft] 566 [m]	0 300 600 900 1200 1500 [m]	
	3R	A B D E	2057 - 0.8 200	(200-0.8/1.6) GS 3°			0 1000 2000 3000 4000 5000 [ft]	
SRA	21R	A C D E	2257 - 1.2 350	(350-1.2/1.6)				
	3L	A C D E	2257 - 1.2 350	(350-1.2/1.6)				

RWY	TORA	TODA	ASDA	LDA	PSN	THR	ALS
21L	10051 [ft] 3063 [m]	11051 [ft] 3368 [m]	11051 [ft] 3368 [m]	10051 [ft] 3063 [m]	36°14.043' N	115°01.018' W	⊕
3R	10120 [ft] 3084 [m]	11120 [ft] 3398 [m]	11120 [ft] 3398 [m]	10120 [ft] 3084 [m]	36°13.029' N	115°02.038' W	

ATIS	NELLIS GROUND	NELLIS TOWER	NELLIS CONTROL	TACAN	ILS RWY 21L	NELLIS EAST	NELLIS WEST
270.100 MHz	275.800 121.800	327.000 132.55	317.525	LSV 12X	109.10 Mhz	384.400	385.000