

MISSION DATA CARD

OPORD		Callsign		Mission		Date/Time		
2893/2024		Raptor		Training		151900MAY24		
Task	SA10 Sead Training					Freq		
AO						134.0		
Departure				Recovery				
RWY28 VFR				RWY10 VFR				
#	Callsign		Pilot		IFF	TCN	LSR	NET

LOADOUT

A/A	2xA120C				GUN	100% HEI-T	
A/G	2xA88C				CHF	120	
POD	HTS, A184, TGP				FLR	0	
TKS	2xFT300				FUEL	100%	

TOLD

	Takeoff	Target	Joker	Bingo	Land
FUEL	11169				

AIRBASES

	Name	TCN	ATIS	GND	TWR	RWY	Elev	ILS
Dep	Akrotiri AFB	107X	288.2	240.1	339.85	28	62	109.7
Arr	Akrotiri AFB	107X	288.2	240.1	339.85	28	62	109.7
Div	Paphos Internationl	79X	127.3		353.8	29	40	108.9

FLIGHTPLAN

#	Name	Navaid/Coords/DME	ALT	TOT
1	ECHO	N34 42.600 E033 10	5000	
2	PAPA	N34 39.390 E032 46.480	5000	
3	SIERRA	N34 25.310 E032 58.400	5000	

OTHER FLIGHTS

Callsign	Mission	Airframe	Freq	TCN	Grpld	Laser
Edelweiss 1	Training	1x F-16C	264.15	21/84		171X
AO		Task				

RADIO CHANNELS

#	Freq	Name
1		Flight/Squadron specific
2	288.2	Akrotiri ATIS
3	240.1	Akrotiri Ground
4	339.85	Aktrotiri Tower
5	335.05	Akrotiri Approach
6	360.1	Incirlik Tower
7	371.35	Incirlik Ground
8	377.475	Incirlik ATIS
9		No Preset
10	127.3	Paphos ATIS
11	353.8	Paphos Tower
12	304.0	CVN-73 George Washington
13	302.0	LHA-1 Tarawa
14	259.0	CV-59 Forrestal
15		No Preset
16	377.8	Overlord
17	265.0	KC-135 Texaco-1 medium/slow
18	319.8	KC-135 Arco-1
19	360.8	KC-135MPRS Arco-2
20	256.0	S-3B Recovery Tanker

RAMROD

0	1	2	3	4	5	6	7	8	9
I	M	P	R	O	V	A	B	L	E

KTC 1400 C

	0	1	2	3	4	5	6	7	8	9
A	SQJL	DOI	PRY	XH	NW	KCV	EF	BA	GT	MU
B	GUQJ	WFM	VKH	XA	PB	ERL	CO	NI	YD	TS
C	FOUQ	JCV	XGY	AK	HP	BDM	LR	EI	SW	TN
D	HEGU	JTX	YDF	WM	KN	QSA	LP	VO	CB	RI
E	SVQP	KEF	NDO	HX	CU	GMW	TI	BY	JA	LR
F	NPOM	RGK	CEB	YF	HW	IJL	QT	VS	XA	DU
G	NEIL	RDY	OUP	BV	KH	GTM	WQ	JC	AS	FX
H	EAJM	IPG	HVO	RC	SY	LKT	UN	BQ	XF	DW
I	RODP	HMI	VTX	JW	EA	FUK	SQ	NG	CL	BY
J	XENV	TUI	SLK	HJ	YW	QCA	GB	MP	DO	FR
K	AYIR	OCM	EGV	HL	PT	DNK	SF	XB	WJ	QU
L	RVJH	IAL	FNG	BO	DQ	TYE	WC	SU	KP	XM
M	VPWD	HAF	CXO	JY	BG	ISQ	KN	ER	LM	UT
N	SATF	RIV	KOM	XQ	GJ	HNP	UE	LW	BC	DY
O	EUNL	CMX	OWR	VQ	BD	PAK	TG	IH	JF	YS
P	UOJY	KMD	AQI	CB	LR	EHT	FV	SN	XG	WP
Q	LFHQ	KVY	PMC	AW	SR	BDX	TJ	GO	EU	NI
R	FBDM	JIL	NEY	UO	RV	WAX	GK	PS	TH	CQ
S	SOGK	IER	UNM	JP	VQ	WFA	YL	CX	TH	DB
T	CKYX	UJO	MTA	SV	EB	QPF	IG	WD	HN	LR
U	JLKA	FGU	BXN	PM	EI	TVD	SO	QC	HY	RW
V	NVFT	OHW	SAY	QU	KG	IRB	JX	CP	LM	ED
W	BTCQ	YLM	WPJ	SO	KG	RAV	XH	EN	DI	FU
X	FXBP	CTI	KRD	LQ	SG	UEO	MV	YJ	WA	HN
Y	VLPJ	MDY	BHF	XG	QA	IST	RK	EU	CO	WN

NAVAIDS

Id	Name	Channel	Position	Elevation
DAN	Incirlik	21	N37 00.950 E035 26.883	243
AKR	Akrotiri	107	N34 34.765 E032 57.769	147
PHA	Paphos	79	N34 42.997 E032 28.963	35
RMD	Ramat David	84	N32 39.892 E035 11.265	136
OS66	Kuweires Military Aviation Institute	36	N36 11.362 E037 34.226	1200

**FOR DCS
 USE ONLY**

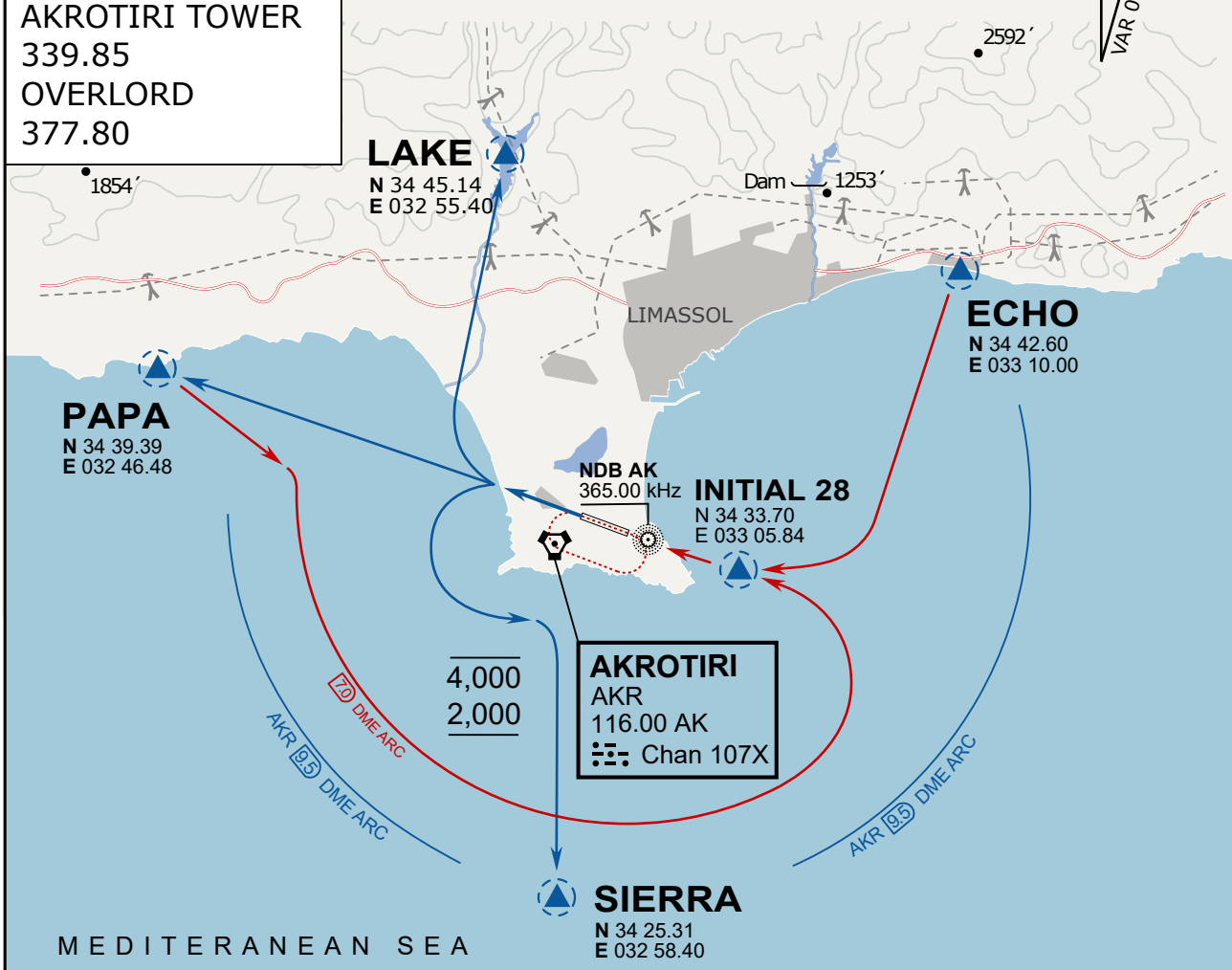


ATIS	AKROTIRI GND	AKROTIRI TWR	OVERLORD CONTROL	TACAN	FIELD ELEVATION
288.20 MHz	240.10 122.10	339.85 130.075	377.8	AKR 107X	75 [ft] 23 [m]

ATIS
 288.20
 AKROTIRI GROUND
 240.10
 AKROTIRI TOWER
 339.85
 OVERLORD
 377.80

NOT FOR CIVIL USE

CAUTION: If unable to comply with restrictions advise ATC prior to departure.



ARR / DEP ROUTE DESCRIPTION

STRAIGHT-IN RWY28

Pass ENTRY at 5.000' MSL or below, pass INITIAL at 1.500' MSL or below.

OVERHEAD BREAK RWY28

Pass ENTRY at 5.000' MSL or below, pass INITIAL at 2.000' MSL, break to the south.

DEPARTURE GENERAL

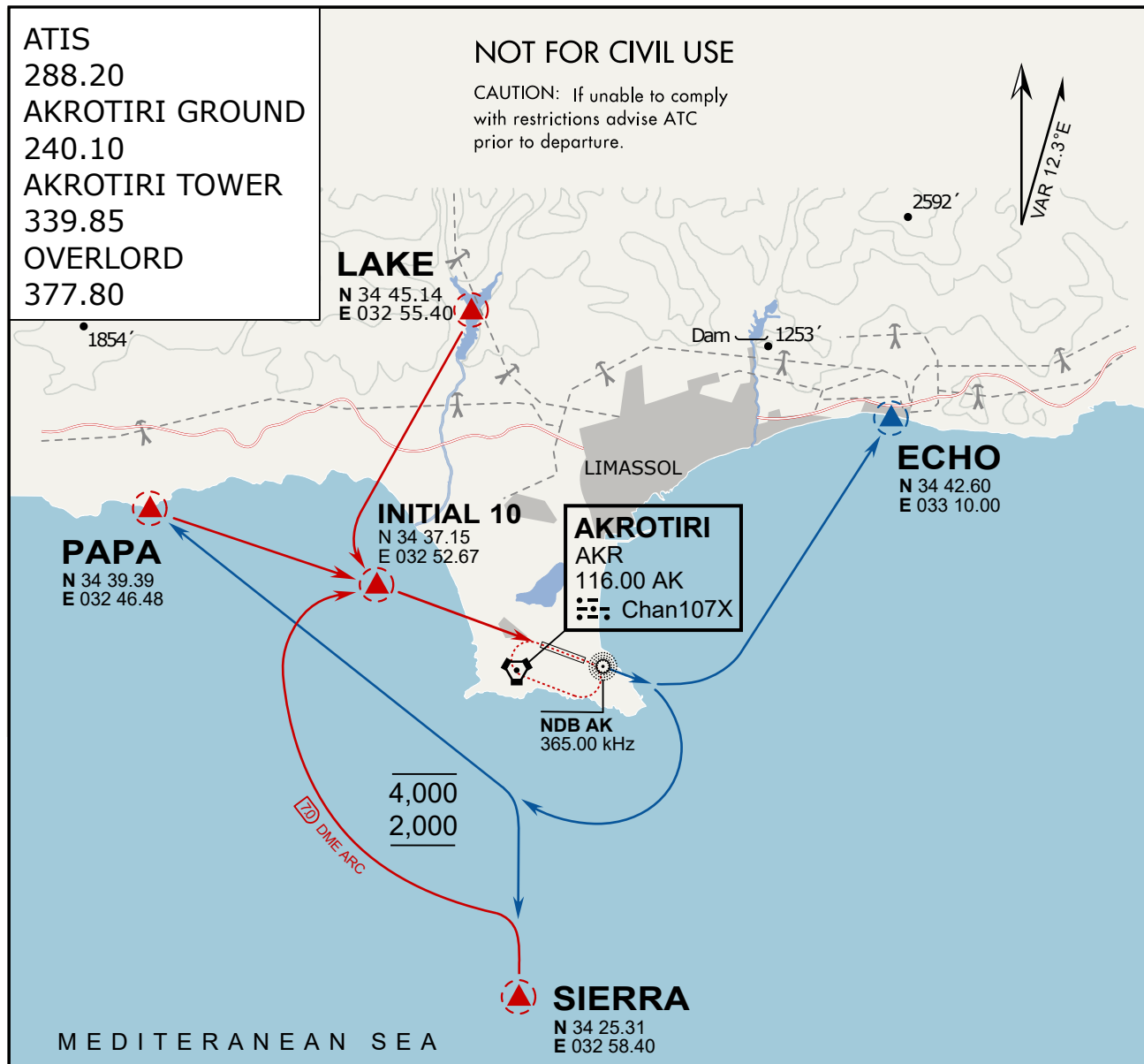
Pass Departure end of runway at 1.000' or below.

DEP RWY28 PAPA: Fly straight ahead to exit.

DEP RWY28 LAKE: Fly straight ahead until coast, than right turn direct exit.

DEP RWY28 SIERRA: Fly straight ahead until coastline, then climbing left turn, intercept AKR R-180 to exit.

DEP ECHO: no exit.



ARR / DEP ROUTE DESCRIPTION

ARRIVAL GENERAL

Pass Entry at 5.000' or below. Overhead Brake RWY 10: pass INITIAL 10 at 2.000' MSL.
Straight-in RWY 10 : pass INITIAL 1.500' or below.

ARR RWY10 PAPA / LAKE: Direct initial.

ARR RWY10 SIERRA: Intercept ARC 7 of AKR to INITIAL 10.

ARR ECHO: no ENTRY.

DEPARTURE GENERAL

Pass Departure end of runway at 1.000' AGL or below. Keep RWY heading until coastline.

DEP RWY10 ECHO: Direct EXIT.

DEP RWY10 SIERRA: Climbing right turn, intercept R180 AKR to Sierra.

DEP RWY10 PAPA: Climbing right turn until R180 AKR, then direct Papa

DEP LAKE: no EXIT.

NOT AVAILABLE

NOT AVAILABLE