

**MISSION DATA CARD**

OPORD		Callsign		Mission		Date/Time		
2884/2024		Monster 1		Training		132015MAY24		
Task	AAR -DB - Gun					Freq		
AO	CAPE PYLA BOMBING RANGE					132.15		
Departure				Recovery				
RWY10 VFR				RWY10 VFR				
#	Callsign		Pilot		IFF	TCN	LSR	NET
-1	Monster 1-1		Toolface		1411	21Y	1611	21/01
-2	Monster 1-2		addiks		1412	84Y	1612	21/02

**LOADOUT**

A/A	A9M				GUN	100% CM	
A/G	7M282L, 12xM82				CHF	120	
POD	A184, TGP				FLR	360	
TKS					FUEL	50%	

**TOLD**

	Takeoff	Target	Joker	Bingo	Land
FUEL	5543				

**AIRBASES**

	Name	TCN	ATIS	GND	TWR	RWY	Elev	ILS
Dep	Akrotiri AFB	107X	288.2	240.1	339.85	28	62	109.7
Arr	Akrotiri AFB	107X	288.2	240.1	339.85	28	62	109.7

**FLIGHTPLAN**

#	Name	Navaid/Coords/DME	ALT	TOT
1	ECHO	N34 42.600 E033 10	5500	
2	EMILI	N34 38.389 E034 02.586	16000	
3	BOMBCIRCLE EAST	N34 57.009 E033 52.153		
4	STRAFE PIT W	N34 57.085 E033 51.111		
5	LAKE	N34 45.150 E032 55.400	5000	
6	INITIAL 28	N34 33.700 E033 05.840	2000	
7	INITIAL 10	N34 37.150 E032 52.670	2000	

**COMMS**

Radio	Usage
1	132.15
2	2 - 4 - 16 - 2 - 4
3	32.00

**SUPPORT****Tanker**

Callsign	TCN	Freq	ALT	TAS
SHELL 3	93Y	278.75	FL170	215
Pos	SHELL3: (N3436 E03419)			

## OTHER FLIGHTS

Callsign	Mission	Airframe	Freq	TCN	Grpld	Laser
Python* 1	Training	1x AV-8B N/A	264.55	1/64		168X
AO		Task				
T-Rex 2	Training	2x A-10C	132.25	21/84	25	156X
AO	CAPE PYLA BOMBING RANGE	Task	DB - Gun - AAR			
Raptor 1	Training	4x F-16C	134.0	1/64		162X
AO		Task	SA10 Sead Training			
Nazgul 6	Training	4x F-15E	134.65	1/64	40	166X
AO		Task				
Edelweiss 2	Training	2x F-16C	135.0	1/64		170X
AO	zypern	Task	Fam Flight			

**RADIO CHANNELS**

#	Freq	Name
1		Flight/Squadron specific
2	288.2	Akrotiri ATIS
3	240.1	Akrotiri Ground
4	339.85	Aktrotiri Tower
5	335.05	Akrotiri Approach
6	360.1	Incirlik Tower
7	371.35	Incirlik Ground
8	377.475	Incirlik ATIS
9		No Preset
10	127.3	Paphos ATIS
11	353.8	Paphos Tower
12	304.0	CVN-73 George Washington
13	302.0	LHA-1 Tarawa
14	259.0	CV-59 Forrestal
15		No Preset
16	377.8	Overlord
17	265.0	KC-135 Texaco-1 medium/slow
18	319.8	KC-135 Arco-1
19	360.8	KC-135MPRS Arco-2
20	256.0	S-3B Recovery Tanker

**RAMROD**

0	1	2	3	4	5	6	7	8	9
S	L	A	T	H	E	R	I	N	G

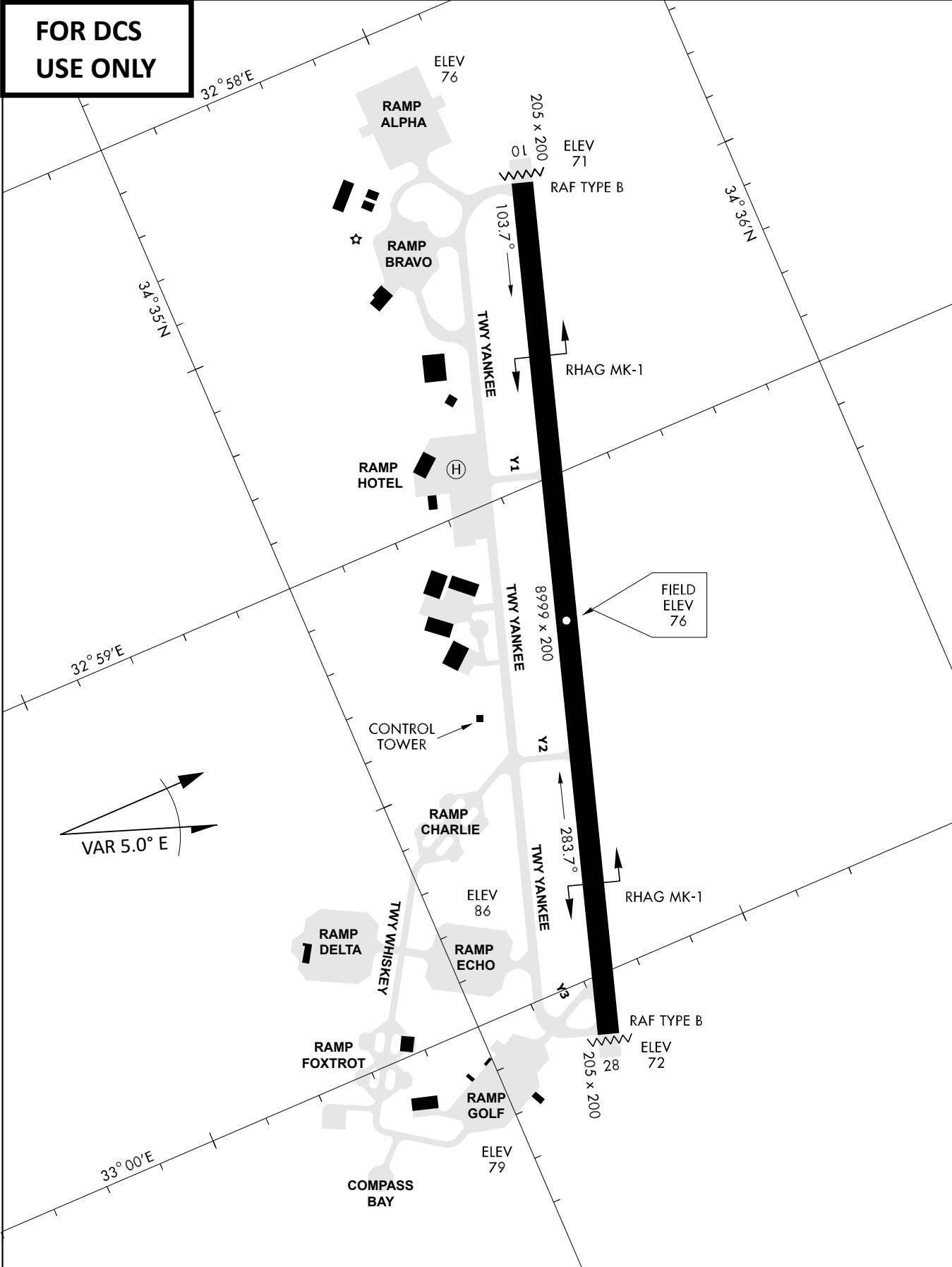
**KTC 1400 C**

	0	1	2	3	4	5	6	7	8	9
A	CSAO	IWH	RDU	KG	YM	NXB	VT	QL	EF	JP
B	DCRP	UTI	OEK	ML	GJ	NSQ	VW	XA	FY	HB
C	UECQ	ONR	DTL	GB	HX	VJW	MS	PA	FY	KI
D	CURT	XBK	EHP	OV	DY	GNF	MJ	WA	IL	SQ
E	RQNJ	BXW	SKF	MH	IY	PEG	OD	TU	AV	CL
F	VUHK	IFE	CJP	YO	MW	GLS	XN	QT	BR	DA
G	JUMO	XKH	IGV	CN	PQ	YEF	TR	LA	SB	WD
H	TVFI	GOY	JDP	NC	KS	XHA	BM	UQ	LR	EW
I	QANX	LVU	FST	WM	GK	JBY	DR	EO	PH	CI
J	JCGA	QUL	PVX	DE	HF	RYN	MK	SI	BO	TW
K	JFNG	WUT	OSE	LM	AQ	RCX	PV	BH	YI	KD
L	WHVU	GLM	YBK	CJ	IP	SQR	EA	FX	TO	ND
M	CNMU	IGK	TWJ	FY	SD	LXP	BO	EQ	AV	RH
N	CVFO	ERD	APN	MX	TS	QWH	IB	GY	JU	LK
O	PLFO	HJQ	VWR	EN	YD	MTK	BS	IG	CU	AX
P	LPCN	SWV	UXJ	TK	OB	MRI	EG	DY	QA	FH
Q	AHOY	GCQ	JEI	BM	UR	FNL	WV	PK	XS	TD
R	MATR	XIW	KSH	JD	VO	GLE	QU	PY	BC	NF
S	JULS	DNB	OFX	EA	KW	VTR	MP	GY	CQ	IH
T	TFYS	KPI	EWJ	NR	HX	DVB	OC	MQ	UL	AG
U	INEJ	HOC	PKA	BT	FD	MRS	LY	GU	WV	QX
V	JSQE	TUM	NOA	RB	DG	IPF	XV	WY	KL	HC
W	UGBP	DOF	KXT	CW	AY	HVR	LJ	NI	SM	QE
X	GHKL	WDF	SEA	XV	JQ	ROC	BN	MY	UP	TI
Y	KORV	YGP	QFU	CE	BJ	MIH	AW	LT	DS	XN

**NAVAIDS**

<b>Id</b>	<b>Name</b>	<b>Channel</b>	<b>Position</b>	<b>Elevation</b>
DAN	Incirlik	21	N37 00.950 E035 26.883	243
AKR	Akrotiri	107	N34 34.765 E032 57.769	147
PHA	Paphos	79	N34 42.997 E032 28.963	35
RMD	Ramat David	84	N32 39.892 E035 11.265	136
OS66	Kuweires Military Aviation Institute	36	N36 11.362 E037 34.226	1200

**FOR DCS  
 USE ONLY**



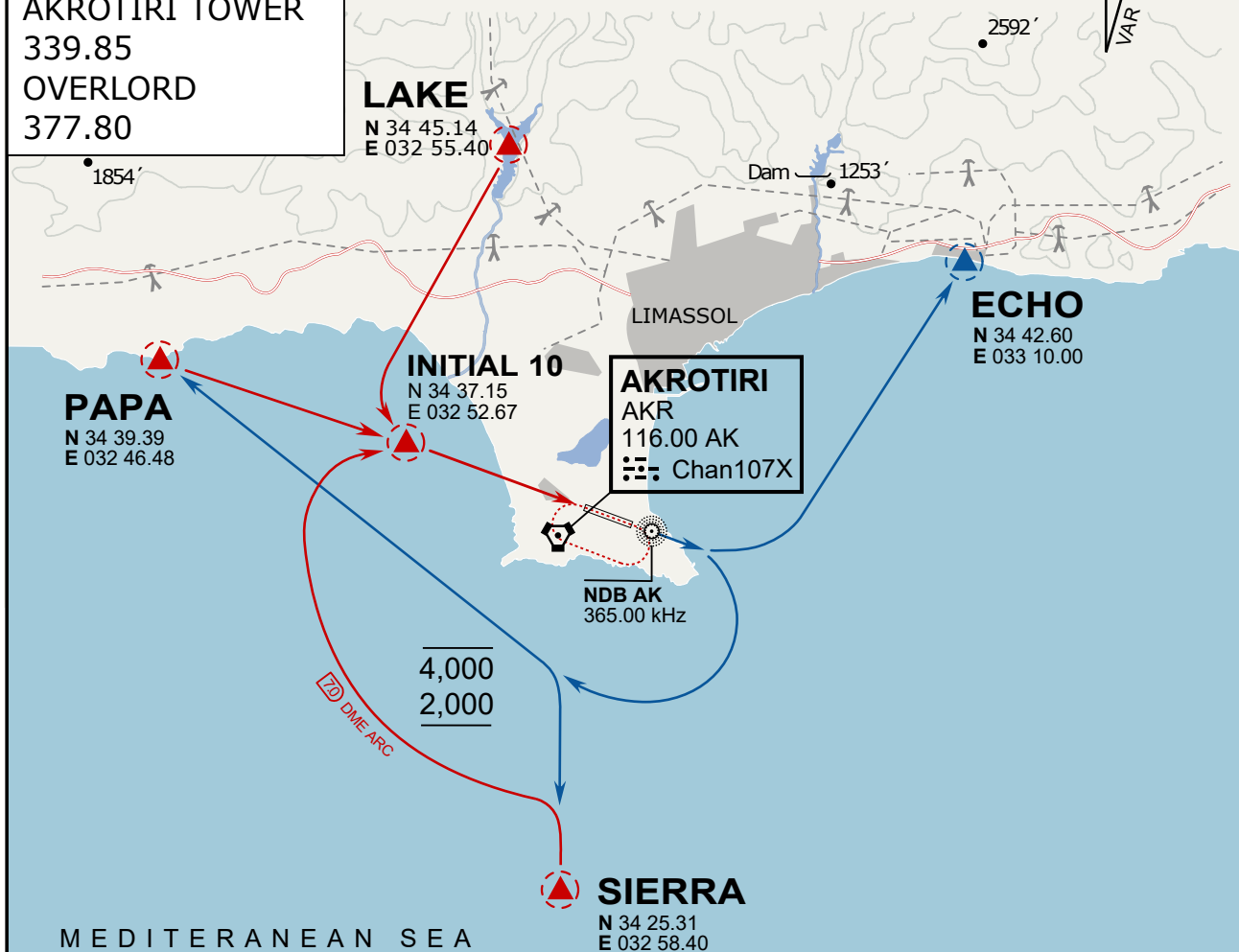
ATIS	AKROTIRI GND	AKROTIRI TWR	OVERLORD CONTROL	TACAN	FIELD ELEVATION
288.20 MHz	240.10   122.10	339.85   130.075	377.8	AKR 107X	<b>75 [ft] 23 [m]</b>



ATIS  
288.20  
AKROTIRI GROUND  
240.10  
AKROTIRI TOWER  
339.85  
OVERLORD  
377.80

NOT FOR CIVIL USE

CAUTION: If unable to comply with restrictions advise ATC prior to departure.



## ARR / DEP ROUTE DESCRIPTION

### ARRIVAL GENERAL

Pass Entry at 5.000' or below. Overhead Brake RWY 10: pass INITIAL 10 at 2.000' MSL.  
Straight-in RWY 10 : pass INITIAL 1.500' or below.

ARR RWY10 PAPA / LAKE: Direct initial.

ARR RWY10 SIERRA: Intercept ARC 7 of AKR to INITIAL 10.

ARR ECHO: no ENTRY.

### DEPARTURE GENERAL

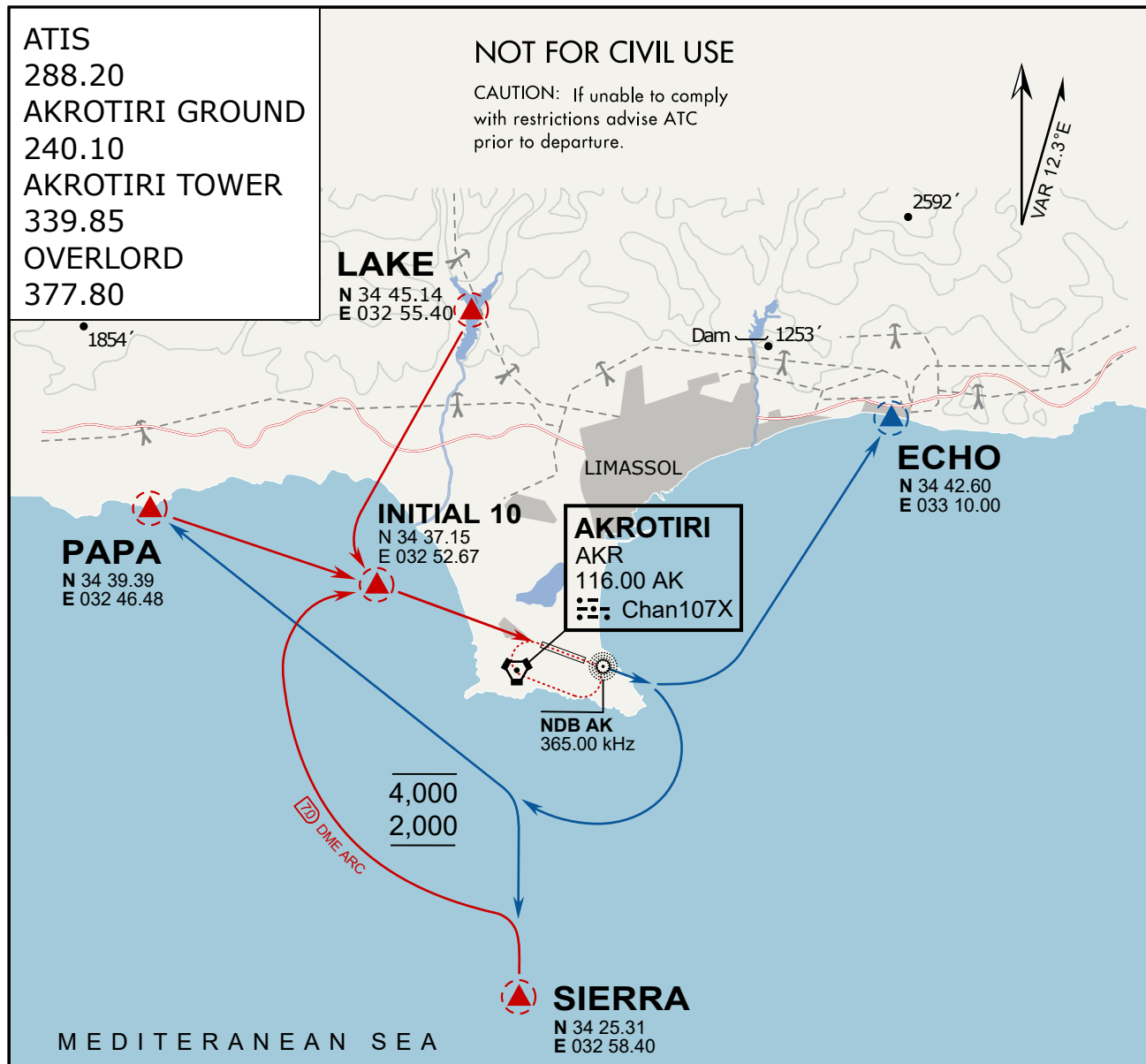
Pass Departure end of runway at 1.000' AGL or below. Keep RWY heading until coastline.

DEP RWY10 ECHO: Direct EXIT.

DEP RWY10 SIERRA: Climbing right turn, intercept R180 AKR to Sierra.

DEP RWY10 PAPA: Climbing right turn until R180 AKR, then direct Papa

DEP LAKE: no EXIT.



## ARR / DEP ROUTE DESCRIPTION

### ARRIVAL GENERAL

Pass Entry at 5.000' or below. Overhead Brake RWY 10: pass INITIAL 10 at 2.000' MSL.  
Straight-in RWY 10 : pass INITIAL 1.500' or below.

ARR RWY10 PAPA / LAKE: Direct initial.

ARR RWY10 SIERRA: Intercept ARC 7 of AKR to INITIAL 10.

ARR ECHO: no ENTRY.

### DEPARTURE GENERAL

Pass Departure end of runway at 1.000' AGL or below. Keep RWY heading until coastline.

DEP RWY10 ECHO: Direct EXIT.

DEP RWY10 SIERRA: Climbing right turn, intercept R180 AKR to Sierra.

DEP RWY10 PAPA: Climbing right turn until R180 AKR, then direct Papa

DEP LAKE: no EXIT.