

MISSION DATA CARD

OPORD		Callsign		Mission		Date/Time		
2883/2024		Python* 1		Training		132015MAY24		
Task						Freq		
AO						264.55		
Departure				Recovery				
CAT				CASE I				
#	Callsign		Pilot		IFF	TCN	LSR	NET
-1	Python* 1-1		Herby		3311	1Y	1681	

LOADOUT

A/A						GUN	
A/G						CHF	
POD						FLR	
TKS						FUEL	

TOLD

	Takeoff	Target	Joker	Bingo	Land
FUEL	7758				

AIRBASES

	Name	TCN	ATIS	GND	TWR	RWY	Elev	ILS
Dep	LHA-1 Tarawa	85X			302.0			
Arr	LHA-1 Tarawa	85X			302.0			
Div	Akrotiri AFB	107X	288.2	240.1	339.85	28	62	109.7

SUPPORT**Tanker**

Callsign	TCN	Freq	ALT	TAS
ARCO 2	41Y	360.8	FL220	400
	Pos	ARCO2: (N3653 E03452)		
TEXACO 2	44Y	244.78	FL150	250
	Pos	TEXACO2: (N3424 E03403)		

AWACS

Callsign	Freq	ALT	Pos
OVERLORD2	377.8	FL320	N3713 E03643 - N3714 E03749

OTHER FLIGHTS

Callsign	Mission	Airframe	Freq	TCN	Grpld	Laser
Monster 1	Training	2x A-10C	132.15	21/84	21	161X
AO	CAPE PYLA BOMBING RANGE	Task	AAR -DB - Gun			
T-Rex 2	Training	2x A-10C	132.25	21/84	25	156X
AO	CAPE PYLA BOMBING RANGE	Task	DB - Gun - AAR			
Raptor 1	Training	4x F-16C	134.0	1/64		162X
AO		Task	SA10 Sead Training			
Nazgul 6	Training	4x F-15E	134.65	1/64	40	166X
AO		Task				
Edelweiss 2	Training	2x F-16C	135.0	1/64		170X
AO	zypern	Task	Fam Flight			

RADIO CHANNELS

#	Freq	Name
1		Flight/Squadron specific
2	288.2	Akrotiri ATIS
3	240.1	Akrotiri Ground
4	339.85	Aktrotiri Tower
5	335.05	Akrotiri Approach
6	360.1	Incirlik Tower
7	371.35	Incirlik Ground
8	377.475	Incirlik ATIS
9		No Preset
10	127.3	Paphos ATIS
11	353.8	Paphos Tower
12	304.0	CVN-73 George Washington
13	302.0	LHA-1 Tarawa
14	259.0	CV-59 Forrestal
15		No Preset
16	377.8	Overlord
17	265.0	KC-135 Texaco-1 medium/slow
18	319.8	KC-135 Arco-1
19	360.8	KC-135MPRS Arco-2
20	256.0	S-3B Recovery Tanker

RAMROD

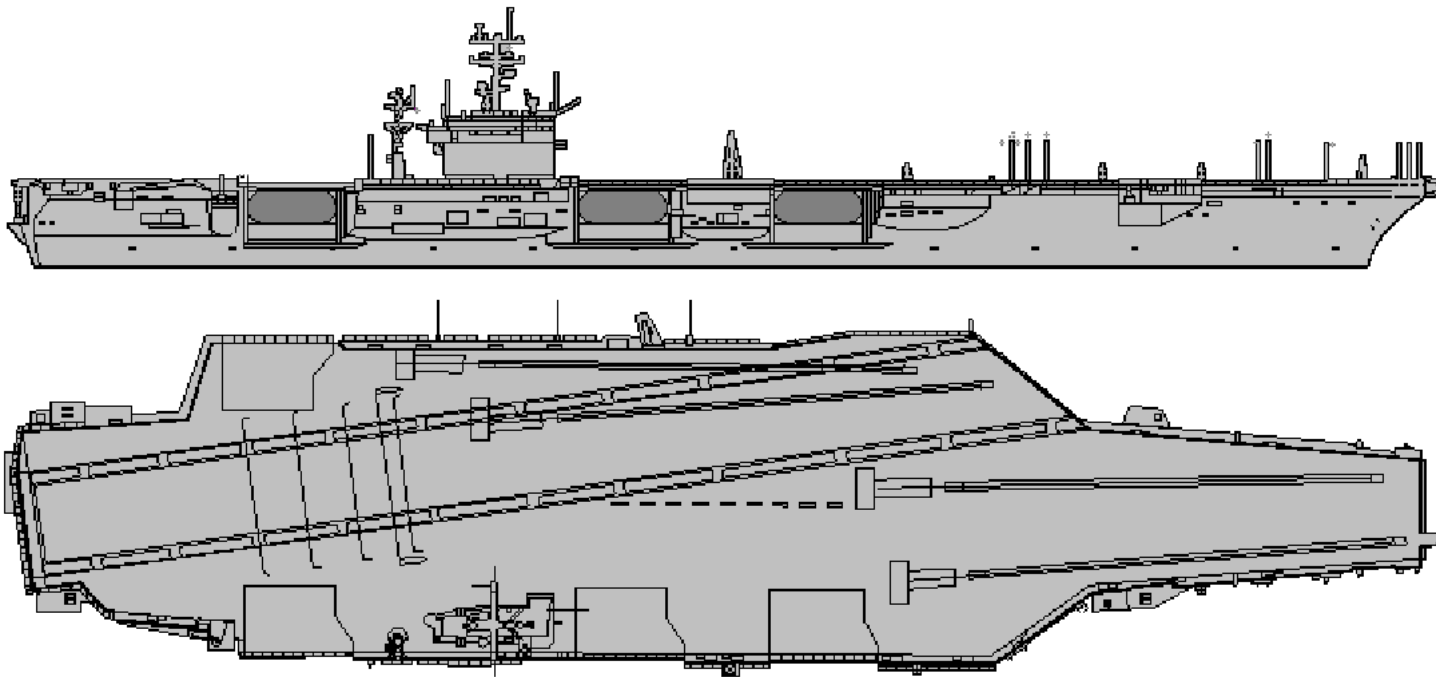
0	1	2	3	4	5	6	7	8	9
S	L	A	T	H	E	R	I	N	G

KTC 1400 C

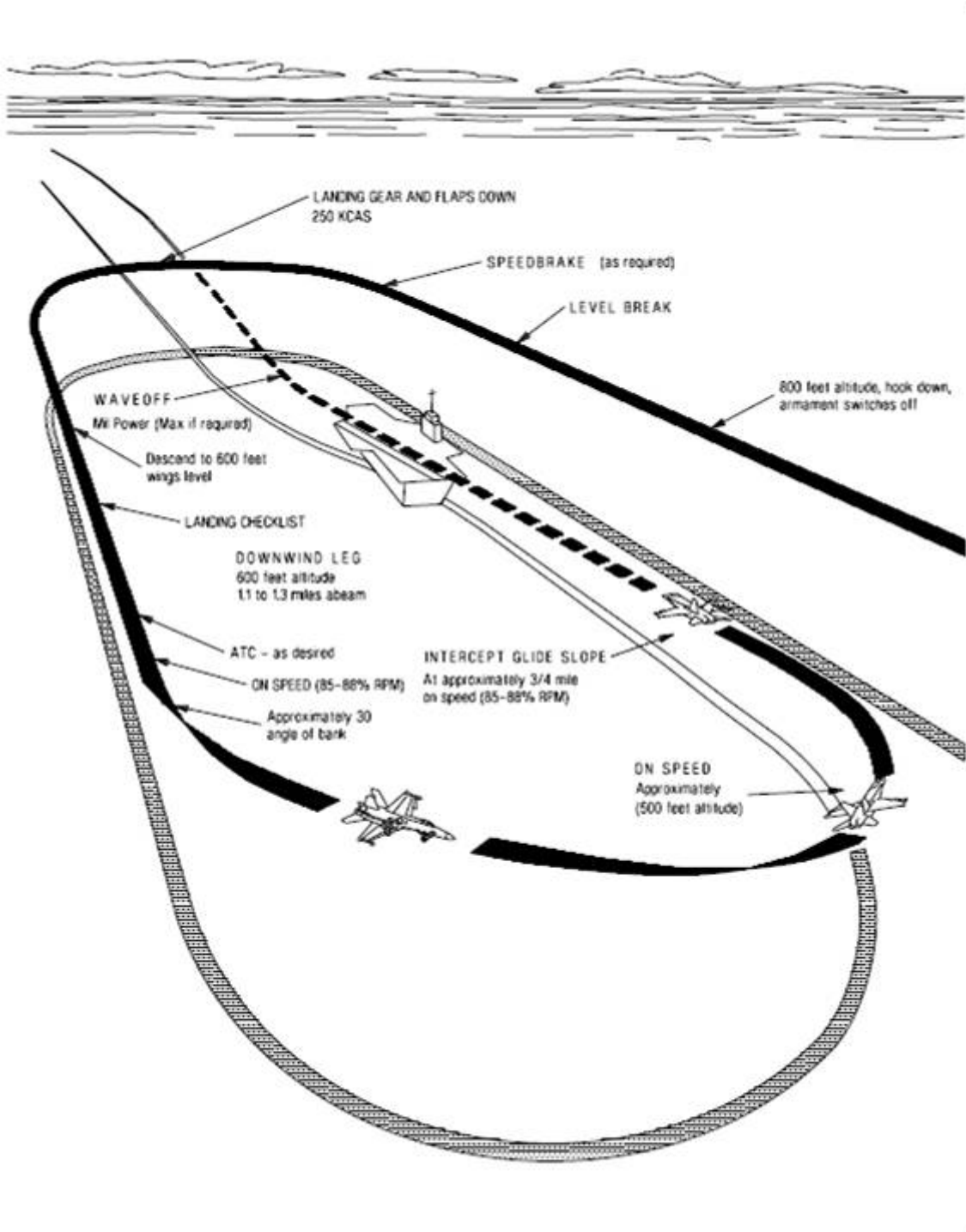
	0	1	2	3	4	5	6	7	8	9
A	CSAO	IWH	RDU	KG	YM	NXB	VT	QL	EF	JP
B	DCRP	UTI	OEK	ML	GJ	NSQ	VW	XA	FY	HB
C	UECQ	ONR	DTL	GB	HX	VJW	MS	PA	FY	KI
D	CURT	XBK	EHP	OV	DY	GNF	MJ	WA	IL	SQ
E	RQNJ	BXW	SKF	MH	IY	PEG	OD	TU	AV	CL
F	VUHK	IFE	CJP	YO	MW	GLS	XN	QT	BR	DA
G	JUMO	XKH	IGV	CN	PQ	YEF	TR	LA	SB	WD
H	TVFI	GOY	JDP	NC	KS	XHA	BM	UQ	LR	EW
I	QANX	LVU	FST	WM	GK	JBY	DR	EO	PH	CI
J	JCGA	QUL	PVX	DE	HF	RYN	MK	SI	BO	TW
K	JFNG	WUT	OSE	LM	AQ	RCX	PV	BH	YI	KD
L	WHVU	GLM	YBK	CJ	IP	SQR	EA	FX	TO	ND
M	CNMU	IGK	TWJ	FY	SD	LXP	BO	EQ	AV	RH
N	CVFO	ERD	APN	MX	TS	QWH	IB	GY	JU	LK
O	PLFO	HJQ	VWR	EN	YD	MTK	BS	IG	CU	AX
P	LPCN	SWV	UXJ	TK	OB	MRI	EG	DY	QA	FH
Q	AHOY	GCQ	JEI	BM	UR	FNL	WV	PK	XS	TD
R	MATR	XIW	KSH	JD	VO	GLE	QU	PY	BC	NF
S	JULS	DNB	OFX	EA	KW	VTR	MP	GY	CQ	IH
T	TFYS	KPI	EWJ	NR	HX	DVB	OC	MQ	UL	AG
U	INEJ	HOC	PKA	BT	FD	MRS	LY	GU	WV	QX
V	JSQE	TUM	NOA	RB	DG	IPF	XV	WY	KL	HC
W	UGBP	DOF	KXT	CW	AY	HVR	LJ	NI	SM	QE
X	GHKL	WDF	SEA	XV	JQ	ROC	BN	MY	UP	TI
Y	KORV	YGP	QFU	CE	BJ	MIH	AW	LT	DS	XN

NAVAIDS

Id	Name	Channel	Position	Elevation
DAN	Incirlik	21	N37 00.950 E035 26.883	243
AKR	Akrotiri	107	N34 34.765 E032 57.769	147
PHA	Paphos	79	N34 42.997 E032 28.963	35
RMD	Ramat David	84	N32 39.892 E035 11.265	136
OS66	Kuweires Military Aviation Institute	36	N36 11.362 E037 34.226	1200



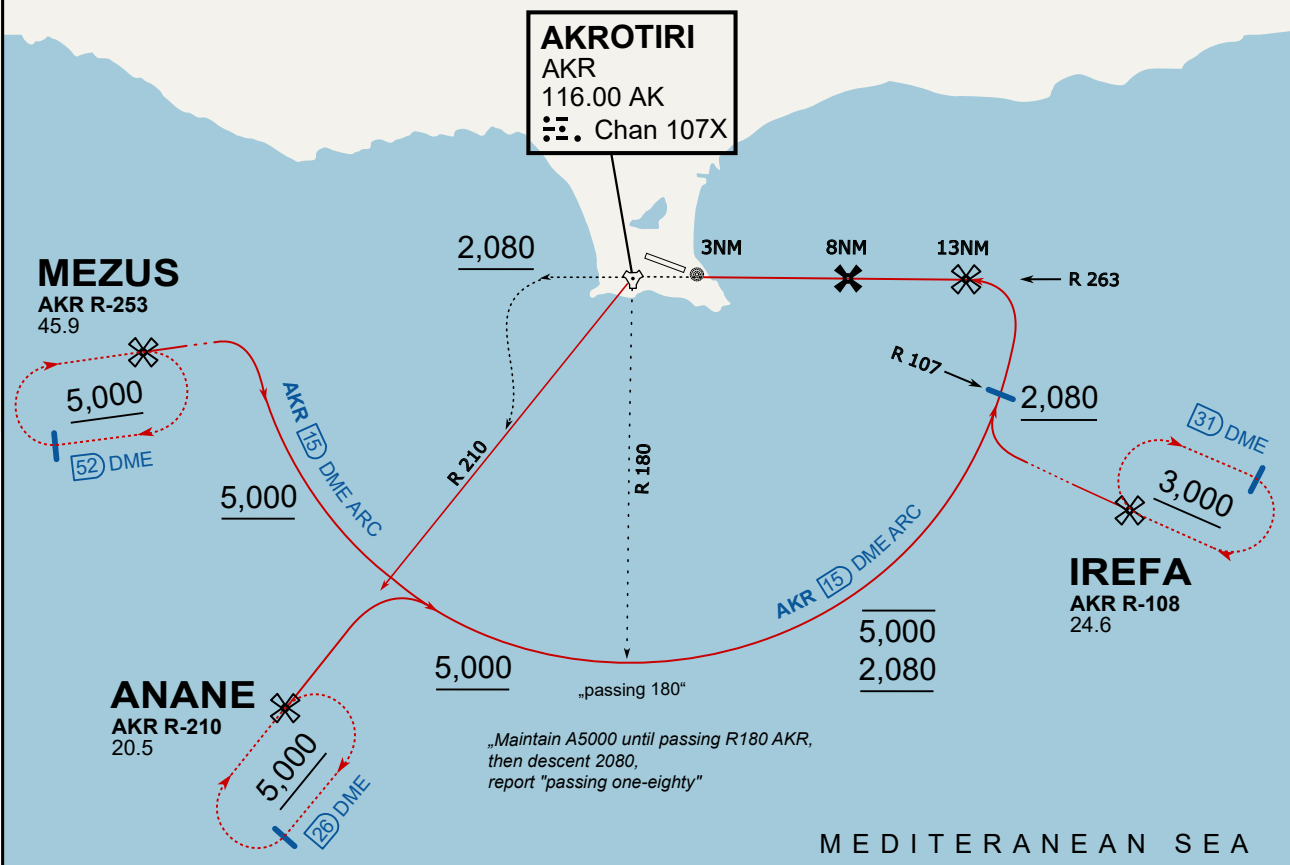




ATIS
288.200
AKROTIRI GROUND
122.100
AKROTIRI TOWER
339.850
APP (OVERLORD)
377.800

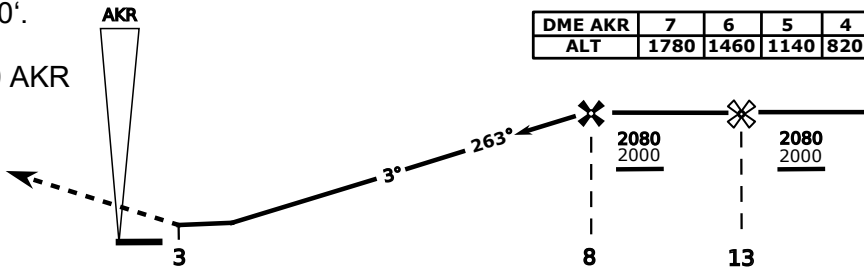
NOT FOR CIVIL USE

CAUTION: If unable to comply with restrictions advise ATC prior to departure.



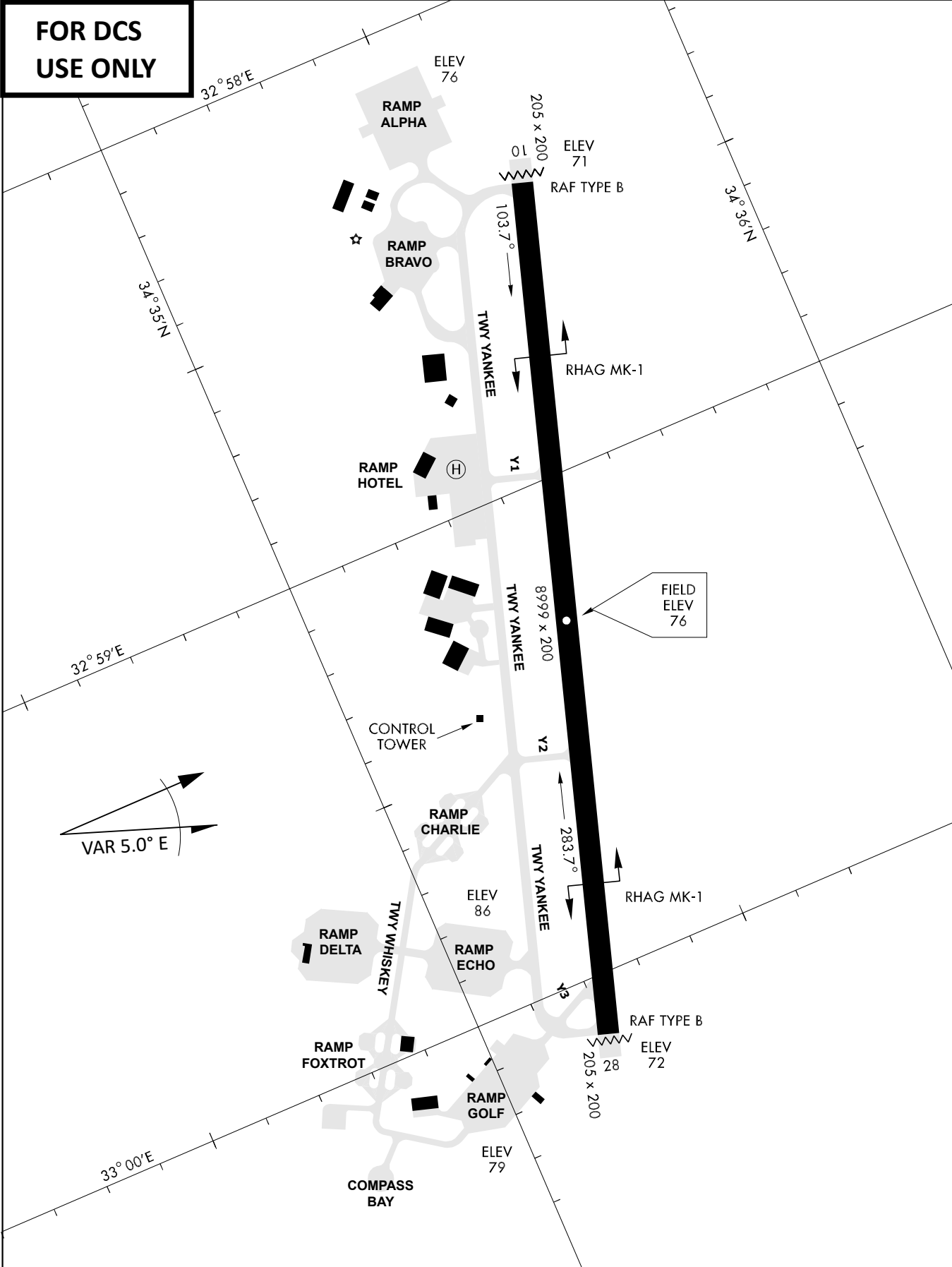
On Track 263° climb A 4.000'.
 passing 2.080' (2.000' AAL)
 turn left and intercept R-210 AKR
 to ANANE.
 Enter ANANE Holding.

THR Elev 74ft DME AKR



CAT	TAC	CIRCLE	GS (kts)	80	120	150	180	210	
A	500(430)	680 (610) 2000m	FAF - MAPt (4.1NM)	3:06	2:03	1:38	1:22	1:10	
B	1300m		RoD (fpm)	420	640	800	950	1110	
C	780 (710) 2600m	N/A	- CIRCLING PROHIBITED N of Rwy						
D			780 (710) 3600m	- final track is offset 20° right of RCL and Intcp 1.1NM before THR					
E			1380 (1310) 5000m	- when established on final contact tower					
			- Timing not Auth to define MAPt						

**FOR DCS
 USE ONLY**



ATIS	AKROTIRI GND	AKROTIRI TWR	OVERLORD CONTROL	TACAN	FIELD ELEVATION
288.20 MHz	240.10 122.10	339.85 130.075	377.8	AKR 107X	75 [ft] 23 [m]