

MISSION DATA CARD

OPORD		Callsign		Mission		Date/Time		
2882/2024		Tiger 1		Training		130000MAY24		
Task	Hunter/Killer Training SA2/SAx Range					Freq		
AO						261.15		
Departure				Recovery				
CAT				CASE I				
#	Callsign		Pilot		IFF	TCN	LSR	NET
-1	Tiger 1-1		Ghost		1011	1Y	1551	01/01
-2	Tiger 1-2		Kosmoss		1012	64Y	1552	01/02

LOADOUT

A/A	2xA9X, A120C					GUN	100% HEI-T
A/G	2xA88C, 2xG38, 3x ADM-141A - BRU-42					CHF	90
POD	TGP					FLR	30
TKS	FPU-8A					FUEL	100%

TOLD

	Takeoff	Target	Joker	Bingo	Land
FUEL	13047			4000	2000

AIRBASES

	Name	TCN	ATIS	GND	TWR	RWY	Elev	ILS
Dep	CVN-73 USS G. Washington	55X		ICLS 12	304.0			
Arr	CVN-73 USS G. Washington	55X		ICLS 12	304.0			
Div	Akrotiri AFB	107X	288.2	240.1	339.85	28	62	109.7

FLIGHTPLAN

#	Name	Navaid/Coords/DME	ALT	TOT
1	Fence In	N34 28 25.432 E034 11 01.099	25000	
2	IP	N35 08 13.541 E034 22 05.023	25000	
3	Target Area SA2/SA3	N35 30 33.268 E034 15 18.640	0	
4	Cold	N34 58 00.799 E034 05 06.704	25000	
5	AAR TEX2	N34 24 51.494 E034 05 41.554	15000	
6	RAF Akrotiri	N34 35 26 E032 59 17	3000	
7	CVN-73 George Washington	N33 42 43.617 E033 02 01.315	3000	

COMMS

Radio	Usage
1	12(GW), 16(OL), 9(TX2), 16(OL), 12(GW) / Alternate 4(AT)
2	Inhouse 261.15
3	MIDS A:22 / B:44

SUPPORT**Tanker**

Callsign	TCN	Freq	ALT	TAS
ARCO 2	41Y	360.8	FL220	400
	Pos	ARCO2: (N3653 E03452)		
TEXACO 2	44Y	244.78	FL150	250
	Pos	TEXACO2: (N3424 E03403)		

AWACS

Callsign	Freq	ALT	Pos
OVERLORD2	377.8	FL320	N3713 E03643 - N3714 E03749

OTHER FLIGHTS

Callsign	Mission	Airframe	Freq	TCN	Grpld	Laser
Tiger 2	Training	2x F/A-18C	261.25	1/64	1	155X
AO		Task	AAR/BFM Setupt			

RADIO CHANNELS

#	Freq	Name
1		Flight/Squadron specific
2	288.2	Akrotiri ATIS
3	240.1	Akrotiri Ground
4	339.85	Aktrotiri Tower
5	335.05	Akrotiri Approach
6	360.1	Incirlik Tower
7	371.35	Incirlik Ground
8	377.475	Incirlik ATIS
9		No Preset
10	127.3	Paphos ATIS
11	353.8	Paphos Tower
12	304.0	CVN-73 George Washington
13	302.0	LHA-1 Tarawa
14	259.0	CV-59 Forrestal
15		No Preset
16	377.8	Overlord
17	265.0	KC-135 Texaco-1 medium/slow
18	319.8	KC-135 Arco-1
19	360.8	KC-135MPRS Arco-2
20	256.0	S-3B Recovery Tanker

RAMROD

0	1	2	3	4	5	6	7	8	9
S	L	A	T	H	E	R	I	N	G

KTC 1400 C

	0	1	2	3	4	5	6	7	8	9
A	CSAO	IWH	RDU	KG	YM	NXB	VT	QL	EF	JP
B	DCRP	UTI	OEK	ML	GJ	NSQ	VW	XA	FY	HB
C	UECQ	ONR	DTL	GB	HX	VJW	MS	PA	FY	KI
D	CURT	XBK	EHP	OV	DY	GNF	MJ	WA	IL	SQ
E	RQNJ	BXW	SKF	MH	IY	PEG	OD	TU	AV	CL
F	VUHK	IFE	CJP	YO	MW	GLS	XN	QT	BR	DA
G	JUMO	XKH	IGV	CN	PQ	YEF	TR	LA	SB	WD
H	TVFI	GOY	JDP	NC	KS	XHA	BM	UQ	LR	EW
I	QANX	LVU	FST	WM	GK	JBY	DR	EO	PH	CI
J	JCGA	QUL	PVX	DE	HF	RYN	MK	SI	BO	TW
K	JFNG	WUT	OSE	LM	AQ	RCX	PV	BH	YI	KD
L	WHVU	GLM	YBK	CJ	IP	SQR	EA	FX	TO	ND
M	CNMU	IGK	TWJ	FY	SD	LXP	BO	EQ	AV	RH
N	CVFO	ERD	APN	MX	TS	QWH	IB	GY	JU	LK
O	PLFO	HJQ	VWR	EN	YD	MTK	BS	IG	CU	AX
P	LPCN	SWV	UXJ	TK	OB	MRI	EG	DY	QA	FH
Q	AHOY	GCQ	JEI	BM	UR	FNL	WV	PK	XS	TD
R	MATR	XIW	KSH	JD	VO	GLE	QU	PY	BC	NF
S	JULS	DNB	OFX	EA	KW	VTR	MP	GY	CQ	IH
T	TFYS	KPI	EWJ	NR	HX	DVB	OC	MQ	UL	AG
U	INEJ	HOC	PKA	BT	FD	MRS	LY	GU	WV	QX
V	JSQE	TUM	NOA	RB	DG	IPF	XV	WY	KL	HC
W	UGBP	DOF	KXT	CW	AY	HVR	LJ	NI	SM	QE
X	GHKL	WDF	SEA	XV	JQ	ROC	BN	MY	UP	TI
Y	KORV	YGP	QFU	CE	BJ	MIH	AW	LT	DS	XN

NAVAIDS

Id	Name	Channel	Position	Elevation
DAN	Incirlik	21	N37 00.950 E035 26.883	243
AKR	Akrotiri	107	N34 34.765 E032 57.769	147
PHA	Paphos	79	N34 42.997 E032 28.963	35
RMD	Ramat David	84	N32 39.892 E035 11.265	136
OS66	Kuweires Military Aviation Institute	36	N36 11.362 E037 34.226	1200



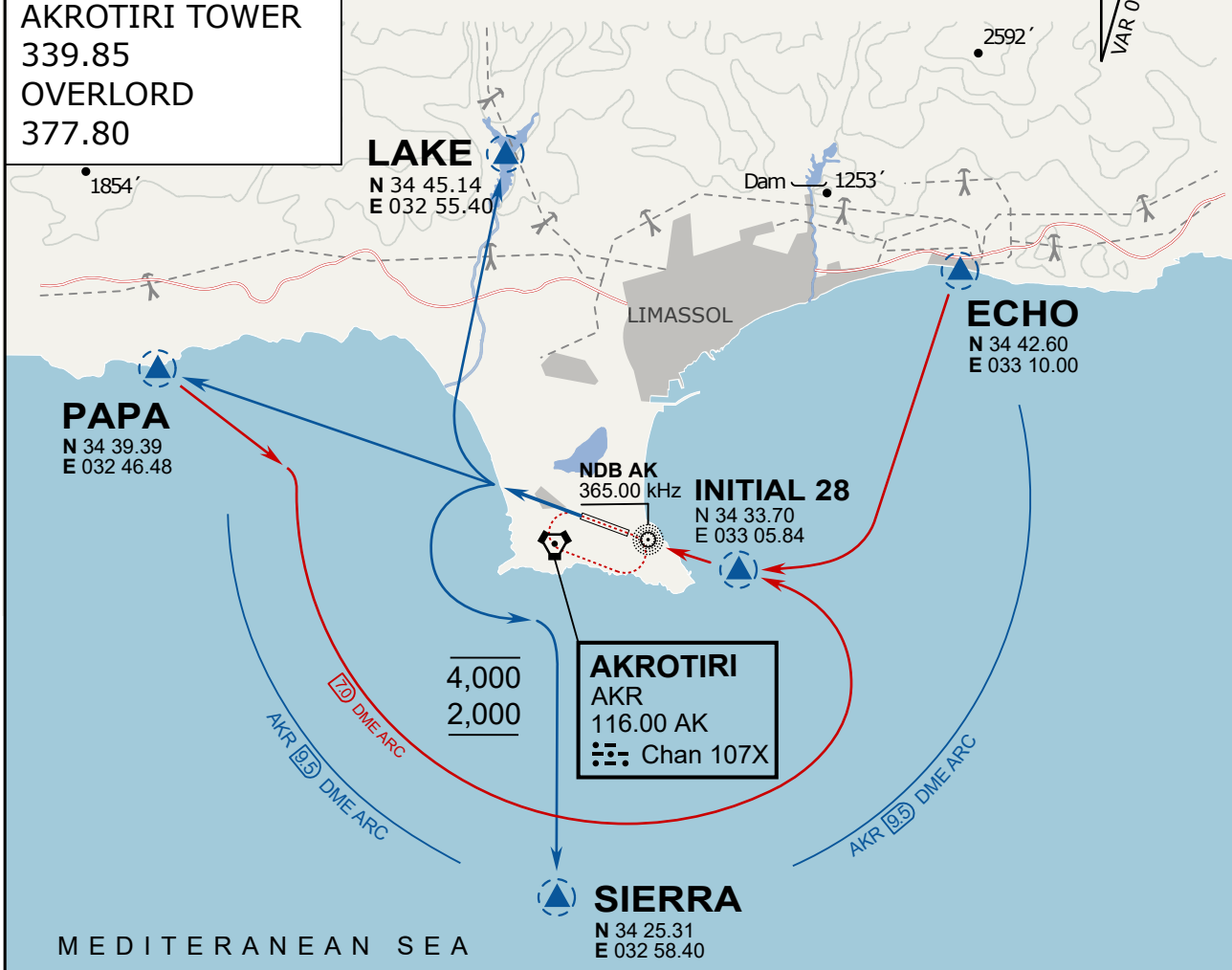




ATIS
 288.20
AKROTIRI GROUND
 240.10
AKROTIRI TOWER
 339.85
OVERLORD
 377.80

NOT FOR CIVIL USE

CAUTION: If unable to comply
 with restrictions advise ATC
 prior to departure.



ARR / DEP ROUTE DESCRIPTION

STRAIGHT-IN RWY28

Pass ENTRY at 5.000' MSL or below, pass INITIAL at 1.500' MSL or below.

OVERHEAD BREAK RWY28

Pass ENTRY at 5.000' MSL or below, pass INITIAL at 2.000' MSL, break to the south.

DEPARTURE GENERAL

Pass Departure end of runway at 1.000' or below.

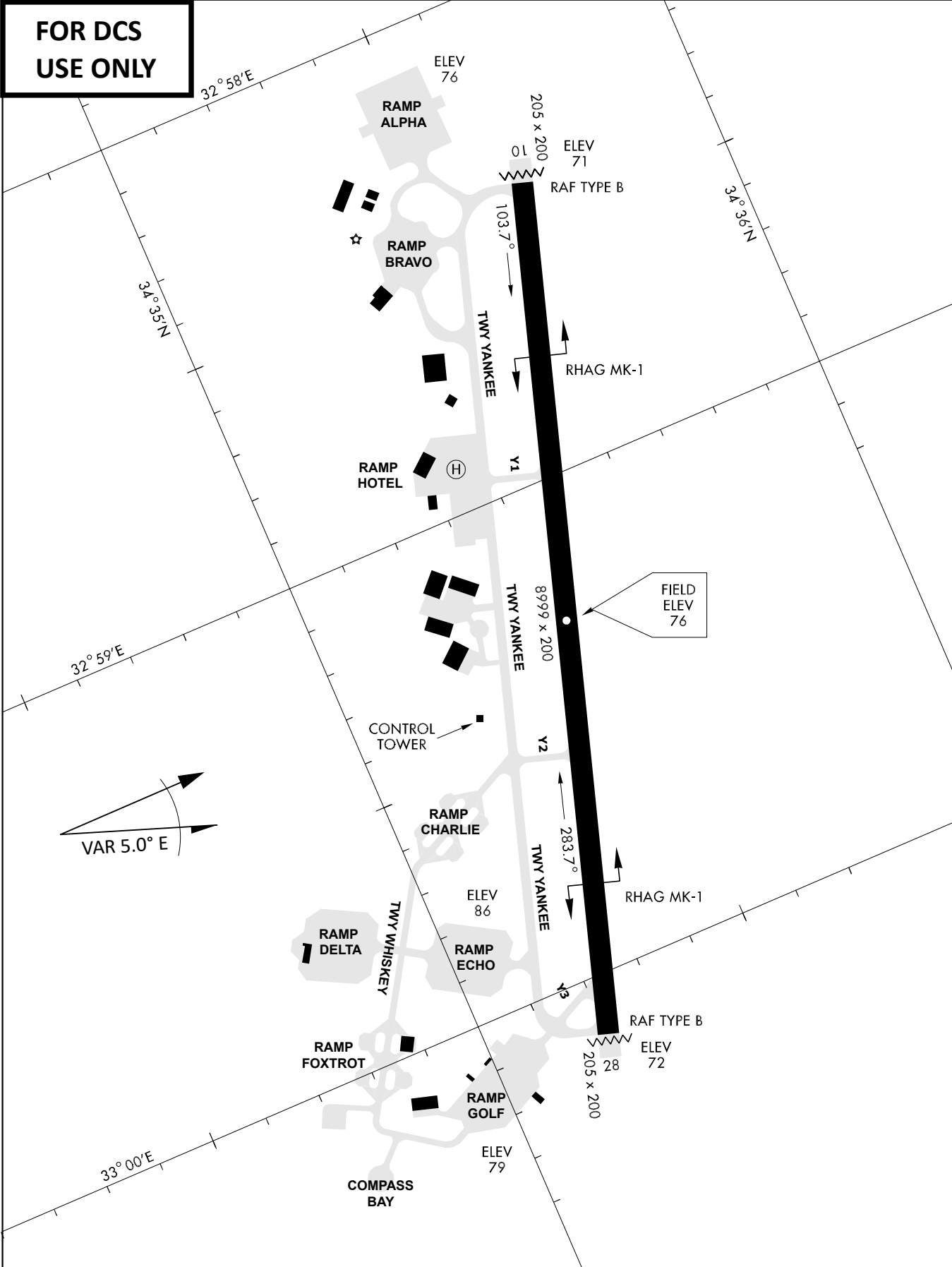
DEP RWY28 PAPA: Fly straight ahead to exit.

DEP RWY28 LAKE: Fly straight ahead until coast, than right turn direct exit.

DEP RWY28 SIERRA: Fly straight ahead until coastline, then climbing left turn, intercept AKR R-180 to exit.

DEP ECHO: no exit.

**FOR DCS
 USE ONLY**



ATIS	AKROTIRI GND	AKROTIRI TWR	OVERLORD CONTROL	TACAN	FIELD ELEVATION
288.20 MHz	240.10 122.10	339.85 130.075	377.8	AKR 107X	75 [ft] 23 [m]