

MISSION DATA CARD

OPORD		Callsign		Mission		Date/Time		
2881/2024		Edelweiss 1		Training		142000MAY24		
Task						Freq		
AO						134.5		
Departure				Recovery				
RWY10 VFR				RWY10 VFR				
#	Callsign		Pilot		IFF	TCN	LSR	NET
-1	Edelweiss 1-1		Snowbird		1701	1Y	1711	

LOADOUT

A/A	2xA120C, 2xA9X				GUN	100% HEI-T	
A/G					CHF	60	
POD					FLR	60	
TKS	2xFT300				FUEL	100%	

TOLD

	Takeoff	Target	Joker	Bingo	Land
FUEL	11169				

AIRBASES

	Name	TCN	ATIS	GND	TWR	RWY	Elev	ILS
Dep	Akrotiri AFB	107X	288.2	240.1	339.85	28	62	109.7
Arr	Akrotiri AFB	107X	288.2	240.1	339.85	28	62	109.7
Div	Paphos Internationl	79X	127.3		353.8	29	40	108.9

FLIGHTPLAN

#	Name	Navaid/Coords/DME	ALT	TOT
1	ECHO	N34 42.600 E033 10	5000	
2	LAKE	N34 45.150 E032 55.400	5000	

SUPPORT**Tanker**

Callsign	TCN	Freq	ALT	TAS
SHELL 3	93Y	278.75	FL170	215
Pos	SHELL3: (N3436 E03419)			

RADIO CHANNELS

#	Freq	Name
1		Flight/Squadron specific
2	288.2	Akrotiri ATIS
3	240.1	Akrotiri Ground
4	339.85	Aktrotiri Tower
5	335.05	Akrotiri Approach
6	360.1	Incirlik Tower
7	371.35	Incirlik Ground
8	377.475	Incirlik ATIS
9		No Preset
10	127.3	Paphos ATIS
11	353.8	Paphos Tower
12	304.0	CVN-73 George Washington
13	302.0	LHA-1 Tarawa
14	259.0	CV-59 Forrestal
15		No Preset
16	377.8	Overlord
17	265.0	KC-135 Texaco-1 medium/slow
18	319.8	KC-135 Arco-1
19	360.8	KC-135MPRS Arco-2
20	256.0	S-3B Recovery Tanker

RAMROD

0	1	2	3	4	5	6	7	8	9
M	A	N	I	F	E	S	T	L	Y

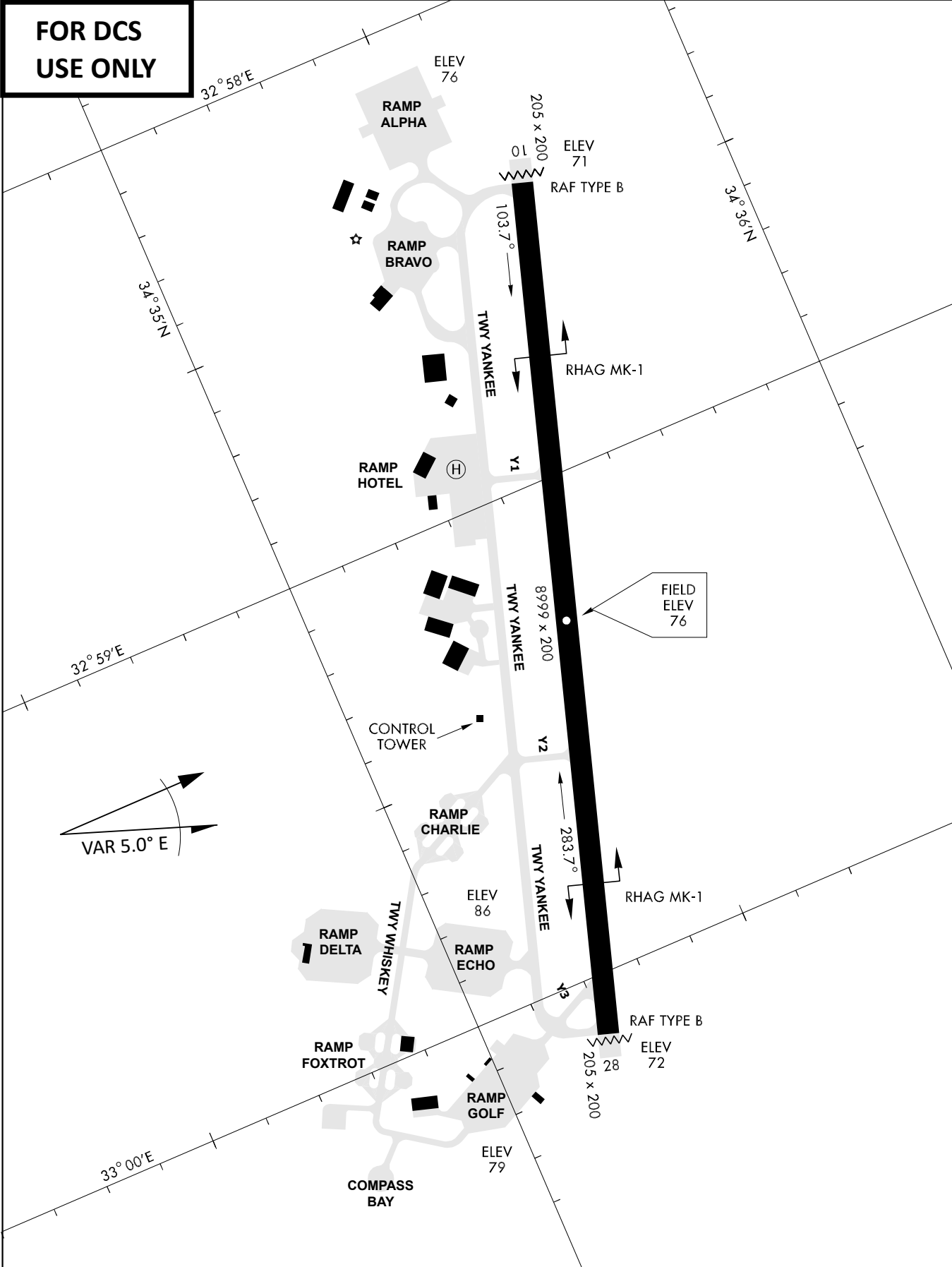
KTC 1400 C

	0	1	2	3	4	5	6	7	8	9
A	NHQP	YKL	MIE	DO	GJ	RXV	FW	BS	CT	UA
B	MVQF	GCW	KUX	RS	OE	ITY	NA	HB	JD	LP
C	CRHW	SMP	IEK	BY	UN	FVD	JA	GQ	XT	OL
D	URXH	QPN	AJE	DW	BO	MKI	GV	TL	YF	SC
E	SYJC	ETM	KAG	PH	RB	VLD	OQ	FI	XW	UN
F	VMLU	JPG	KCD	NX	HT	WYO	IF	RA	ES	BQ
G	WRPM	CIG	OSV	NF	YH	XLA	BQ	UK	JD	ET
H	UIPJ	HYO	QLC	DM	GA	BFT	NS	XW	ER	KV
I	EYFT	ALP	SRX	IO	JQ	MND	KC	BH	GW	VU
J	UMVP	AKH	RDY	CF	LW	SXE	JG	BT	QO	NI
K	RHTE	QJK	YDW	MX	UN	VBG	FP	AI	SC	OL
L	IYEG	VPQ	SDJ	MK	AF	WNC	TU	OL	RX	BH
M	IPBE	SXV	OHK	MF	YN	LTJ	CR	QW	GU	AD
N	VAYE	FNB	IRJ	KD	ML	PQC	UG	OH	XT	WS
O	JVDK	IMY	EQG	UW	FR	XHA	LC	PS	NO	TB
P	QHOR	YFD	BNJ	UX	PT	MLK	GE	VS	CA	WI
Q	PBTO	LFX	CUA	KV	MS	YDR	WN	HE	JG	QI
R	LPWG	AUQ	NJS	YH	XT	FVE	BC	KR	DO	IM
S	CIKO	YQF	PSV	TE	LG	BDJ	AH	WN	MR	UX
T	BDGT	IRK	CXE	FY	JU	HNV	AO	PL	WM	SQ
U	GETD	FMK	XWC	SH	YP	UAQ	RV	JL	BN	IO
V	ECWQ	IFH	JBX	UL	YG	RDT	OK	NS	PA	MV
W	YWPM	CFQ	DJX	LU	HS	NTG	OR	KV	EA	IB
X	BLSQ	FRT	IMW	HC	DK	UYJ	EN	AO	GV	XP
Y	GVJE	WLB	CPF	KN	XT	YDU	AS	OR	IM	HQ

NAVAIDS

Id	Name	Channel	Position	Elevation
DAN	Incirlik	21	N37 00.950 E035 26.883	243
AKR	Akrotiri	107	N34 34.765 E032 57.769	147
PHA	Paphos	79	N34 42.997 E032 28.963	35
RMD	Ramat David	84	N32 39.892 E035 11.265	136
OS66	Kuweires Military Aviation Institute	36	N36 11.362 E037 34.226	1200

**FOR DCS
 USE ONLY**



ATIS	AKROTIRI GND	AKROTIRI TWR	OVERLORD CONTROL	TACAN	FIELD ELEVATION
288.20 MHz	240.10 122.10	339.85 130.075	377.8	AKR 107X	75 [ft] 23 [m]

ATIS
 288.20
 AKROTIRI GROUND
 240.10
 AKROTIRI TOWER
 339.85
 OVERLORD
 377.80

NOT FOR CIVIL USE

CAUTION: If unable to comply with restrictions advise ATC prior to departure.



LAKE

N 34 45.14
E 032 55.40

Dam 1253'

2592'

1854'

LIMASSOL

ECHO

N 34 42.60
E 033 10.00

INITIAL 10

N 34 37.15
E 032 52.67

AKROTIRI

AKR

116.00 AK

Chan107X

NDB AK
365.00 kHz

PAPA
N 34 39.39
E 032 46.48

4,000
2,000

DME ARC

SIERRA

N 34 25.31
E 032 58.40

MEDITERRANEAN SEA

ARR / DEP ROUTE DESCRIPTION

ARRIVAL GENERAL

Pass Entry at 5.000' or below. Overhead Brake RWY 10: pass INITIAL 10 at 2.000' MSL. Straight-in RWY 10 : pass INITIAL 1.500' or below.

ARR RWY10 PAPA / LAKE: Direct initial.

ARR RWY10 SIERRA: Intercept ARC 7 of AKR to INITIAL 10.

ARR ECHO: no ENTRY.

DEPARTURE GENERAL

Pass Departure end of runway at 1.000' AGL or below. Keep RWY heading until coastline.

DEP RWY10 ECHO: Direct EXIT.

DEP RWY10 SIERRA: Climbing right turn, intercept R180 AKR to Sierra.

DEP RWY10 PAPA: Climbing right turn until R180 AKR, then direct Papa

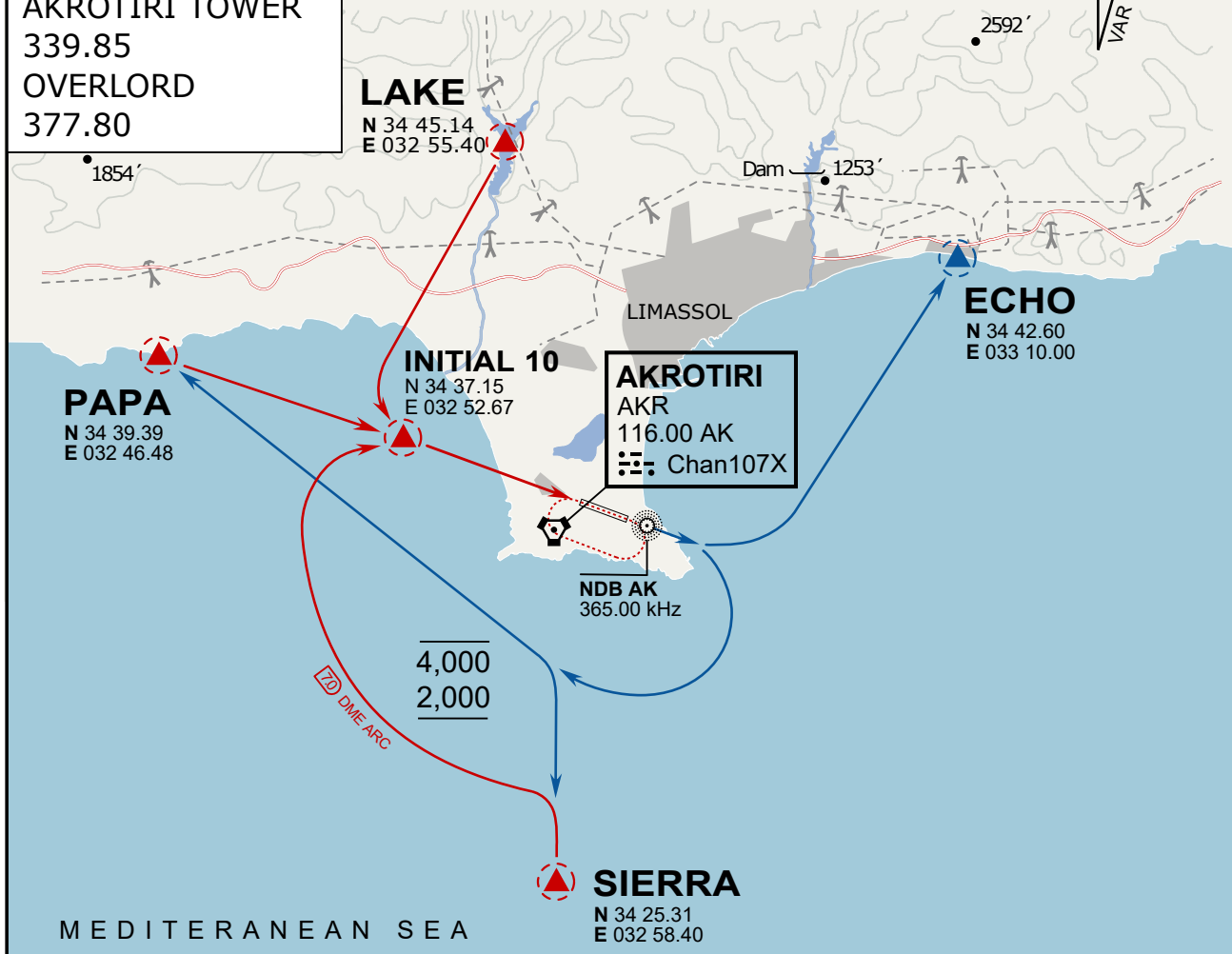
DEP LAKE: no EXIT.

vJaBoG32 ETTR NAV CHART

ATIS
288.20
AKROTIRI GROUND
240.10
AKROTIRI TOWER
339.85
OVERLORD
377.80

NOT FOR CIVIL USE

CAUTION: If unable to comply with restrictions advise ATC prior to departure.



MEDITERRANEAN SEA

ARR / DEP ROUTE DESCRIPTION

ARRIVAL GENERAL

Pass Entry at 5.000' or below. Overhead Brake RWY 10: pass INITIAL 10 at 2.000' MSL. Straight-in RWY 10 : pass INITIAL 1.500' or below.

ARR RWY10 PAPA / LAKE: Direct initial.

ARR RWY10 SIERRA: Intercept ARC 7 of AKR to INITIAL 10.

ARR ECHO: no ENTRY.

DEPARTURE GENERAL

Pass Departure end of runway at 1.000' AGL or below. Keep RWY heading until coastline.

DEP RWY10 ECHO: Direct EXIT.

DEP RWY10 SIERRA: Climbing right turn, intercept R180 AKR to Sierra.

DEP RWY10 PAPA: Climbing right turn until R180 AKR, then direct Papa

DEP LAKE: no EXIT.

NOT AVAILABLE

NOT AVAILABLE