

MISSION DATA CARD

| | | | | | | | | |
|------------|-------------|-----------|-------|--------------------|------|-------------|------|-----|
| OPORD | | Callsign | | Mission | | Date/Time | | |
| 2875/2024 | | Panther 7 | | Training | | 152000MAY24 | | |
| Task | 66 - IFR | | | | | Freq | | |
| AO | | | | | | 261.35 | | |
| Departure | | | | Recovery | | | | |
| DREAM FOUR | | | | HI-TACAN Z RWY 21L | | | | |
| # | Callsign | | Pilot | | IFF | TCN | LSR | NET |
| -1 | Panther 7-1 | | Prinz | | 1271 | 1Y | 1571 | |

LOADOUT

| | | | | | | | |
|-----|--------------|--|--|--|------|------------|--|
| A/A | 2xA9X, A120C | | | | GUN | 100% HEI-T | |
| A/G | | | | | CHF | 120 | |
| POD | TGP | | | | FLR | 0 | |
| TKS | FPU-8A | | | | FUEL | 100% | |

TOLD

| | | | | | |
|------|---------|--------|-------|-------|------|
| | Takeoff | Target | Joker | Bingo | Land |
| FUEL | 13047 | | | | |

AIRBASES

| | | | | | | | | |
|-----|------------|-----|-------|-------|-------|-----|------|-------|
| | Name | TCN | ATIS | GND | TWR | RWY | Elev | ILS |
| Dep | Nellis AFB | 12X | 270.1 | 275.8 | 327.0 | 21L | 1850 | 109.1 |
| Arr | Nellis AFB | 12X | 270.1 | 275.8 | 327.0 | 21L | 1850 | 109.1 |
| Div | Nellis AFB | 12X | 270.1 | 275.8 | 327.0 | 21L | 1850 | 109.1 |

FLIGHTPLAN

| # | Name | Navaid/Coords/DME | ALT | TOT |
|----|-------|--|-------|-----|
| 1 | MINTT | LSV 339/28 LAS 351/38 (N36 42.740 W115 06.290) | 17000 | |
| 2 | JUNNO | BLD 346/44 (N36 43.800 W114 52.770) | 17000 | |
| 3 | DREAM | LAS 354/66 BLD 342/71 (N37 10.340 W114 59.530) | | |
| 4 | MOOSE | LSV 016/94 (N37 36.770 W114 04.420) | | |
| 5 | TIMBR | LSV 011/33 (N36 45 W114 44.580) | | |
| 6 | ARCOE | LSV 357/30 (N36 44.260 W114 55.020) | 15000 | |
| 7 | FYTTR | LSV 269/33 (N36 21.440 W115 41.470) | 14000 | |
| 8 | JAYSN | N36 34.425 W116 02.444 | | |
| 9 | FLUSH | LSV 287/73 (N36 50.800 W116 20.270) | | |
| 10 | DUDBE | N36 21.849 W115 20.581 | 13000 | |

COMMS

| Radio | Usage |
|-------|--|
| 1 | CLR (1) 289.9 / (2) GND 275.1 / (3) TWR 372.1 / (4) DEP 385.400 / (5) CNTR 343.7 / (6) APP 273.650 |
| 2 | CLR (1) 289.9 / (2) GND 275.1 / (3) TWR 372.1 / (4) DEP 385.400 / (5) CNTR 343.7 / (6) APP 273.650 |
| 3 | 22 |
| 4 | 44 |

NOTES

Circ Del ~~28~~ 289.900

Ground ~~27~~ 275.900

Tower ~~32~~ 27.100

Departure ~~33~~ 335.400

CENTER ~~34~~ 343.700

Approach ~~27~~ 273.650

KLSV 141751Z 21004KT 10SM OVC014 15/M1 A2976

--- Lola

Dream 4 JUNNO/MINTT (9)

HI TACAN Z 21L (19)

FYTTR 3 (36)

HI TACAN Y 21L (37)

OTHER FLIGHTS

| Callsign | Mission | Airframe | Freq | TCN | Grpld | Laser |
|-----------|---------------------|------------|---------------------|------|-------|-------|
| Tiger 1 | Training | 1x F/A-18C | 261.15 | 1/64 | 1 | 151X |
| AO | | Task | 66 - IFR | | | |
| Nazgul 6 | Training | 4x F-15E | 262.45 | 1/64 | 40 | 166X |
| AO | North of Nellis AFB | Task | 66 - IFR Rumble | | | |
| Rattler 5 | Training | 4x AH-64D | 133.5 | 1/64 | | 125X |
| AO | Nellis | Task | IFR Rumble | | | |
| Nazgul 7 | Training | 4x F-15E | 262.45 | 1/64 | | 156X |
| AO | | Task | vJaboG66-IFR Rumble | | | |
| Zapper* 1 | Training | 1x A-10C | 264.05 | 1/64 | | 170X |
| AO | Nellis | Task | IFR Rumble | | | |
| Raptor 1 | Training | 4x F-16C | 134.0 | 1/64 | 40 | 166X |
| AO | North of Nellis AFB | Task | 66 - IFR Rumble | | | |

RADIO CHANNELS

| # | Freq | Name |
|----|---------|--------------------------------|
| 1 | | Flight/Squadron specific |
| 2 | 289.4 | Nellis Clearance Delivery |
| 3 | 275.8 | Nellis Ground |
| 4 | 327.0 | Nellis Tower |
| 5 | 385.4 | Nellis Approach/Departure West |
| 6 | 273.55 | Nellis Approach/Departure East |
| 7 | 317.525 | Nellis Control -- Sally |
| 8 | 254.4 | Nellis Control-- Lee |
| 9 | 305.6 | SOF Bullseye |
| 10 | 343.725 | EMERGENCY SINGLE FRQ |
| 11 | 270.1 | Nellis ATIS |
| 12 | 360.625 | Creech AFB Tower |
| 13 | 250.1 | HAVE QUICK 13 |
| 14 | 251.1 | HAVE QUICK 14 |
| 15 | 252.1 | HAVE QUICK 15 |
| 16 | 377.8 | Blackjack |
| 17 | 265.0 | KC-135 AR-641A |
| 18 | 360.8 | KC-135MPRS AR-635 |
| 19 | 319.8 | KC-135MPRS AR-625 |
| 20 | 300.05 | KC-135 AR-231V |

RAMROD

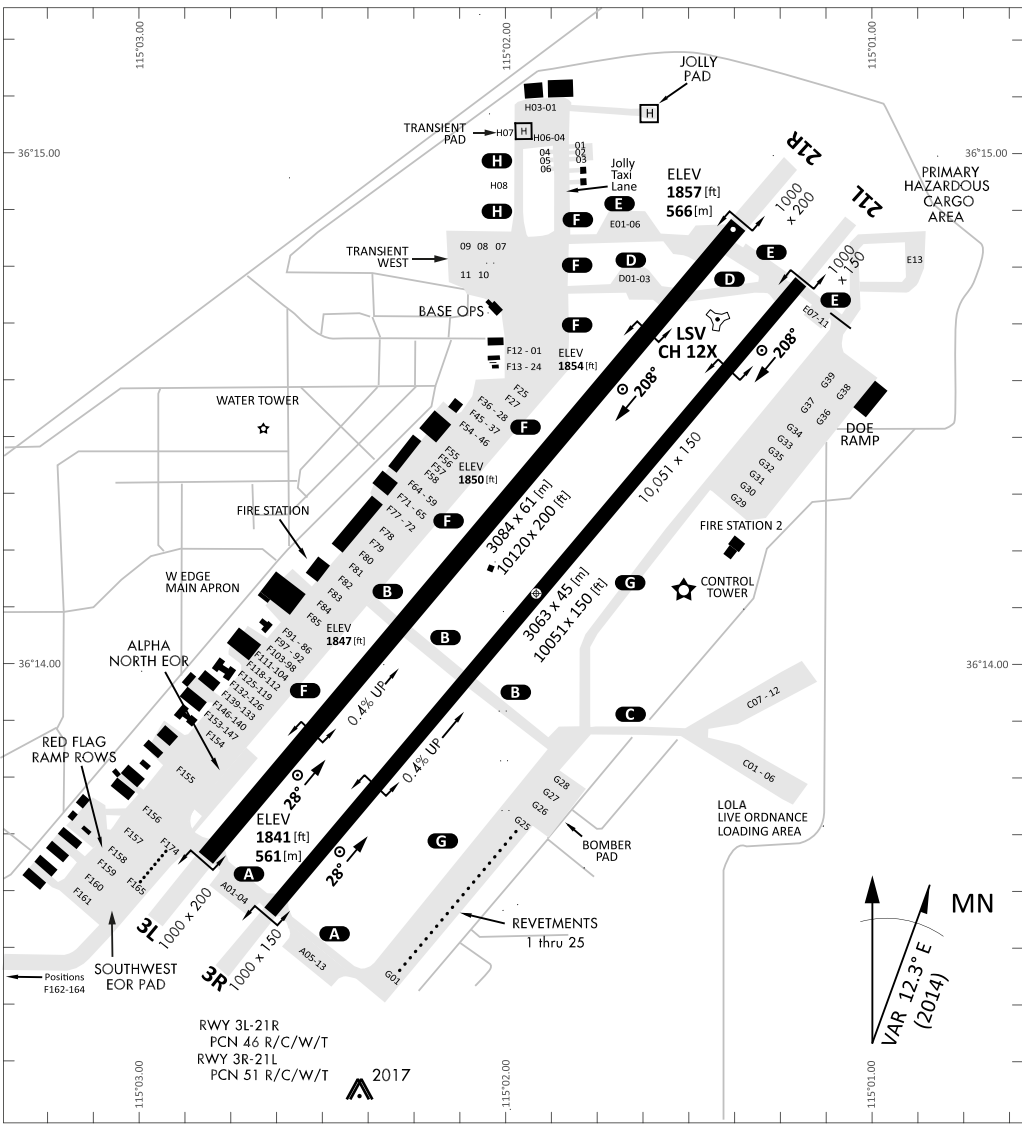
| | | | | | | | | | |
|---|---|---|---|---|---|---|---|---|---|
| 0 | 1 | 2 | 3 | 4 | 5 | 6 | 7 | 8 | 9 |
| I | M | P | R | O | V | A | B | L | E |

KTC 1400 C

| | 0 | 1 | 2 | 3 | 4 | 5 | 6 | 7 | 8 | 9 |
|---|------|-----|-----|----|----|-----|----|----|----|----|
| A | SQJL | DOI | PRY | XH | NW | KCV | EF | BA | GT | MU |
| B | GUQJ | WFM | VKH | XA | PB | ERL | CO | NI | YD | TS |
| C | FOUQ | JCV | XGY | AK | HP | BDM | LR | EI | SW | TN |
| D | HEGU | JTX | YDF | WM | KN | QSA | LP | VO | CB | RI |
| E | SVQP | KEF | NDO | HX | CU | GMW | TI | BY | JA | LR |
| F | NPOM | RGK | CEB | YF | HW | IJL | QT | VS | XA | DU |
| G | NEIL | RDY | OUP | BV | KH | GTM | WQ | JC | AS | FX |
| H | EAJM | IPG | HVO | RC | SY | LKT | UN | BQ | XF | DW |
| I | RODP | HMI | VTX | JW | EA | FUK | SQ | NG | CL | BY |
| J | XENV | TUI | SLK | HJ | YW | QCA | GB | MP | DO | FR |
| K | AYIR | OCM | EGV | HL | PT | DNK | SF | XB | WJ | QU |
| L | RVJH | IAL | FNG | BO | DQ | TYE | WC | SU | KP | XM |
| M | VPWD | HAF | CXO | JY | BG | ISQ | KN | ER | LM | UT |
| N | SATF | RIV | KOM | XQ | GJ | HNP | UE | LW | BC | DY |
| O | EUNL | CMX | OWR | VQ | BD | PAK | TG | IH | JF | YS |
| P | UOJY | KMD | AQI | CB | LR | EHT | FV | SN | XG | WP |
| Q | LFHQ | KVY | PMC | AW | SR | BDX | TJ | GO | EU | NI |
| R | FBDM | JIL | NEY | UO | RV | WAX | GK | PS | TH | CQ |
| S | SOGK | IER | UNM | JP | VQ | WFA | YL | CX | TH | DB |
| T | CKYX | UJO | MTA | SV | EB | QPF | IG | WD | HN | LR |
| U | JLKA | FGU | BXN | PM | EI | TVD | SO | QC | HY | RW |
| V | NVFT | OHW | SAY | QU | KG | IRB | JX | CP | LM | ED |
| W | BTCQ | YLM | WPJ | SO | KG | RAV | XH | EN | DI | FU |
| X | FXBP | CTI | KRD | LQ | SG | UEO | MV | YJ | WA | HN |
| Y | VLPJ | MDY | BHF | XG | QA | IST | RK | EU | CO | WN |

NAVAIDS

| Id | Name | Channel | Position | Elevation |
|-----|---------------|---------|--------------------|-----------|
| BCE | Bryce Canyon | 75 | N3741.35 W11218.23 | 9040 |
| BIH | Bishop | 33 | N3722.62 W11821.99 | 4114 |
| BLD | Boulder | 114 | N3559.75 W11451.82 | 3650 |
| BTY | Beatty | 94 | N3648.54 W11644.86 | 2925 |
| CDC | Cedar City | 120 | N3747.24 W11304.90 | 5463 |
| DAG | Daggett | 79 | N3457.75 W11634.69 | 1760 |
| EED | Needles | 99 | N3445.96 W11428.43 | 650 |
| GFS | Goffs | 91 | N3507.87 W11510.59 | 4019 |
| GRL | Groom Lake | 18 | N3713.91 W11548.16 | 4475 |
| HEC | Hector | 74 | N3447.83 W11627.78 | 1854 |
| ILC | Wilson Creek | 110 | N3815.02 W11423.65 | 9318 |
| INS | Creech AFB | 87 | N3635.20 W11540.12 | 3101 |
| LAS | McCarran Intl | 116 | N3604.78 W11509.59 | 2142 |
| LSV | Nellis | 12 | N3614.68 W11501.50 | 1864 |
| MLF | Milford | 58 | N3821.62 W11300.79 | 4977 |
| MMM | Mormon Mesa | 90 | N3646.16 W11416.65 | 2120 |
| MVA | Mina | 98 | N3833.92 W11801.97 | 7860 |
| OAL | Coale Dale | 124 | N3800.20 W11746.23 | 4800 |
| PGS | Peach Springs | 57 | N3537.48 W11332.67 | 4754 |
| TPH | Tonopah Muni | 119 | N3801.84 W11702.01 | 5330 |
| TQQ | Silverbow | 77 | N3748.00 W11647.00 | 5500 |
| UTI | St George | 23 | N3705.29 W11335.53 | 2871 |



RWY 3L-21R
 PCN 46 R/C/W/T
 RWY 3R-21L
 PCN 51 R/C/W/T
 2017

| PAR | RWY | CAT | MINIMA | ARP | ELEV | Scale |
|-----|-----|---------|------------------------------------|---------------------------------|----------------------|--|
| | 21L | A B D E | 2057 - 0.8 200 (200-0.8/1.6) GS 3° | 36° 14.060° N 115° 01.058° W | 1857 [ft] 566 [m] | 0 300 600 900 1200 1500 [m] 0 1000 2000 3000 4000 5000 [ft] |
| | 3R | A B D E | 2057 - 0.8 200 (200-0.8/1.6) GS 3° | | | |
| | 21R | A C D E | 2257 - 1.2 350 (350-1.2/1.6) | | | |
| | 3L | A C D E | 2257 - 1.2 350 (350-1.2/1.6) | | | |

| RWY | TORA | TODA | ASDA | LDA | PSN | THR | ALS |
|-----|---------------------|---------------------|---------------------|---------------------|--------------|---------------|-----|
| 21L | 10051 [ft] 3063 [m] | 11051 [ft] 3368 [m] | 11051 [ft] 3368 [m] | 10051 [ft] 3063 [m] | 36°14.043' N | 115°01.018' W | ⊕ |
| 3R | 10120 [ft] 3084 [m] | 11120 [ft] 3398 [m] | 11120 [ft] 3398 [m] | 10120 [ft] 3084 [m] | 36°13.029' N | 115°02.038' W | |
| | | | | | | | |
| | | | | | | | |

| ATIS | NELLIS GROUND | NELLIS TOWER | NELLIS CONTROL | TACAN | ILS RWY 21L | NELLIS EAST | NELLIS WEST |
|-------------|-------------------|------------------|----------------|---------|-------------|-------------|-------------|
| 270.100 MHz | 275.800 121.800 | 327.000 132.55 | 317.525 | LSV 12X | 109.10 Mhz | 384.400 | 385.000 |

DREAM FOUR DEPARTURE DREAM4 | **VALID 2014**

LAS VEGAS, NEVADA

ATIS
270.100
NELLIS GROUND
275.800
NELLIS TOWER
327.000
NELLIS CONTROL
317.525
NELLIS DEP/APP EAST
384.400
BLACKJACK
377.800

DREAM

N3710.34
W11459.53

MINTT
LAS 351/38
17,000

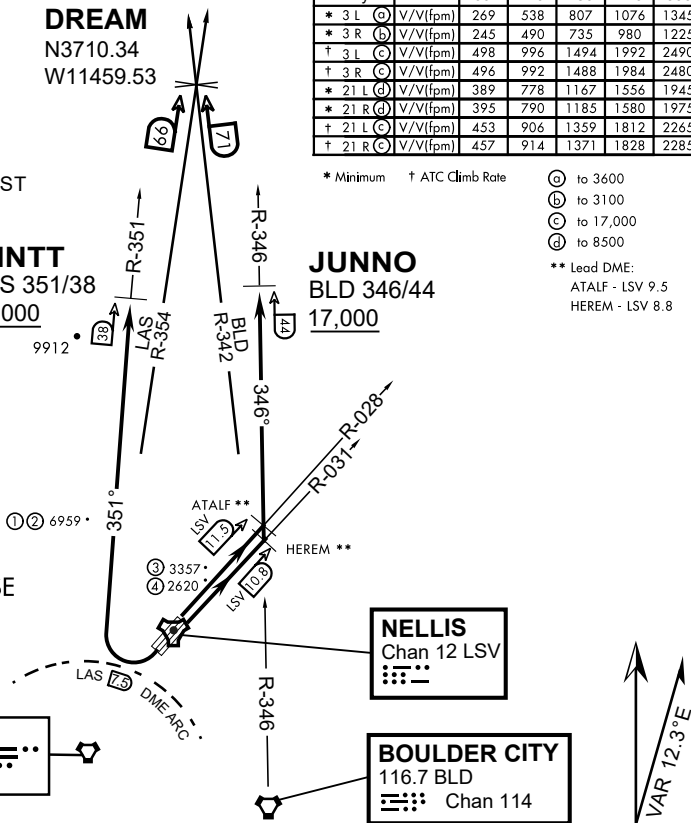
JUNNO
BLD 346/44
17,000

| Rwy | Knots | 60 | 120 | 180 | 240 | 300 | 360 |
|------------|----------|-----|-----|------|------|------|------|
| * 3 L (A) | V/V(fpm) | 269 | 538 | 807 | 1076 | 1345 | 1614 |
| * 3 R (B) | V/V(fpm) | 245 | 490 | 735 | 980 | 1225 | 1470 |
| † 3 L (C) | V/V(fpm) | 498 | 996 | 1494 | 1992 | 2490 | 2988 |
| † 3 R (C) | V/V(fpm) | 496 | 992 | 1488 | 1984 | 2480 | 2976 |
| * 21 L (D) | V/V(fpm) | 389 | 778 | 1167 | 1556 | 1945 | 2334 |
| * 21 R (D) | V/V(fpm) | 395 | 790 | 1185 | 1580 | 1975 | 2370 |
| † 21 L (C) | V/V(fpm) | 453 | 906 | 1359 | 1812 | 2265 | 2718 |
| † 21 R (C) | V/V(fpm) | 457 | 914 | 1371 | 1828 | 2285 | 2742 |

* Minimum † ATC Climb Rate

- (A) to 3600
 - (B) to 3100
 - (C) to 17,000
 - (D) to 8500
- ** Lead DME:
ATALF - LSV 9.5
HEREM - LSV 8.8

- ① 12.24 NM from Rwy 21R
- ② 12.40 NM from Rwy 21L
- ③ 5.67 NM from Rwy 3L
- ④ 5.85 NM from Rwy 3R



NOT FOR CIVIL USE

CAUTION: If unable to comply with restrictions advise ATC prior to departure.

DEPARTURE ROUTE DESCRIPTION

TAKE-OFF RWY 3L

- Fly runway heading to intercept the LSV TACAN R-028 then direct ATALF, intercept the BLD VORTAC R-346 then direct JUNNO, cross JUNNO at or above 17,000, then via assigned route.

TAKE-OFF RWY 3R

- Fly runway heading to intercept the LSV TACAN R-031 then direct HEREM, intercept the BLD VORTAC R-346 then direct JUNNO, cross JUNNO at or above 17,000, then via assigned route.

TAKE-OFF RWY 21L/R

- Turn right to intercept LAS VORTAC R-351 outbound. Remain North of LAS 7.5 DME turning Northbound. Intercept LAS R-351 between 5000 and 6000, do not proceed West of LAS R-351. Cross MINTT at or above 17,000, then via assigned route.

NOISE ABATMENT PROCEDURES: Fly acc. Nellis Noise Abatement instructions

DREAM FOUR DEPARTURE (DREAM4 • DREAM)

HI-TACAN Z RWY 21L

| | | | |
|-------------------|---------------|--|------------------------------|
| TACAN LSV Chan 12 | APCH CRS 210° | Rwy ldg 21L 10,051 TDZE 1865 Arprt Elev 1869 | Rwy ldg 21R 10,120 TDZE 1869 |
|-------------------|---------------|--|------------------------------|

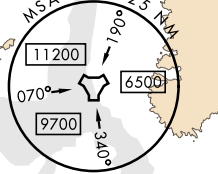
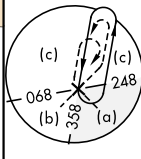
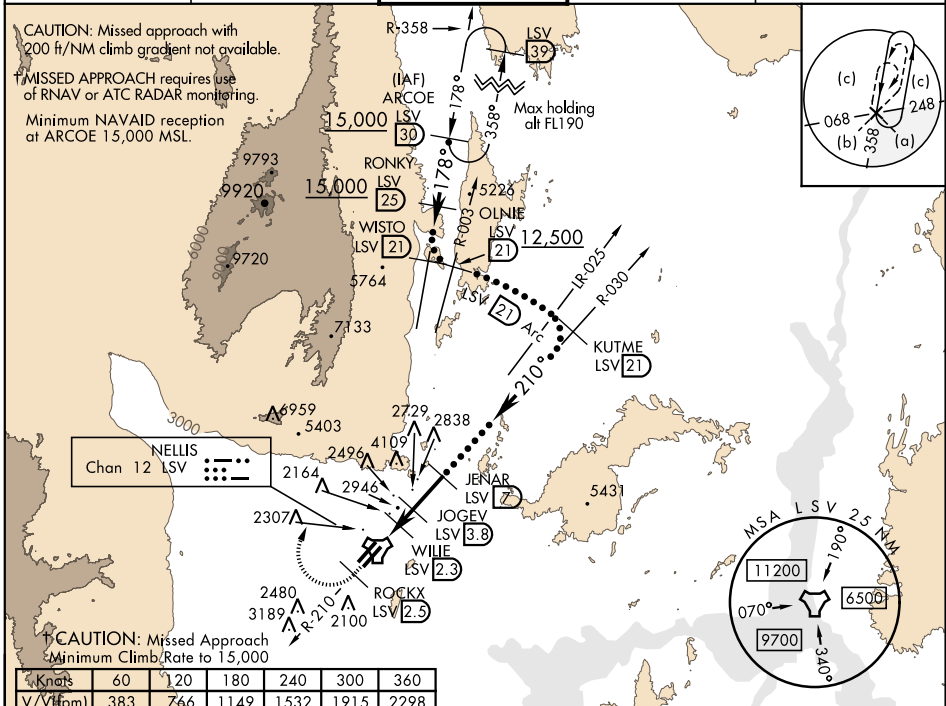
JAL-227 [USAF] NELLIS AFB (KLSV)

▼* When ALS inop, increase CAT CDE vis to 1 1/4 miles.
 ** Circling not authorized E of Rwy 3R-21L.

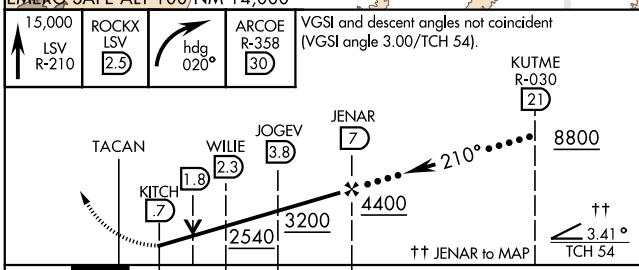


† MISSED APPROACH: Climb to 15,000, intercept LSV TACAN R-210 to 2.5 DME (ROCKX), then climbing right turn heading 020° to join LSV R-358 to ARCOE and hold, continue climb in hold to 15,000. Missed approach not for civil use.

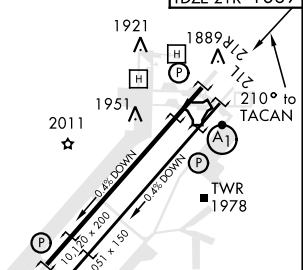
| | | | | |
|------------|------------------------------|---------------------------|---------------------|----------------------|
| ATIS 270.1 | NELLIS APP CON 124.95 273.55 | NELLIS TOWER 132.55 327.0 | GND CON 121.8 275.8 | CLNC DEL 120.9 289.4 |
|------------|------------------------------|---------------------------|---------------------|----------------------|



Controlling Obstacle 6959'
 EMERG SAFE ALT 100, NM 14,000



| | |
|-----------|---------------|
| ELEV 1869 | TDZE 21L 1865 |
| | TDZE 21R 1869 |



HI-TACAN Z RWY 21L

SW-4, 05 DEC 2019 to 02 JAN 2020

SW-4, 05 DEC 2019 to 02 JAN 2020

HI-TACAN Y RWY 21L

| | | | |
|-------------------|---------------|--|------------------------------|
| TACAN LSV Chan 12 | APCH CRS 210° | Rwy ldg 21L 10,051 TDZE 1865 Arprt Elev 1869 | Rwy ldg 21R 10,120 TDZE 1869 |
|-------------------|---------------|--|------------------------------|

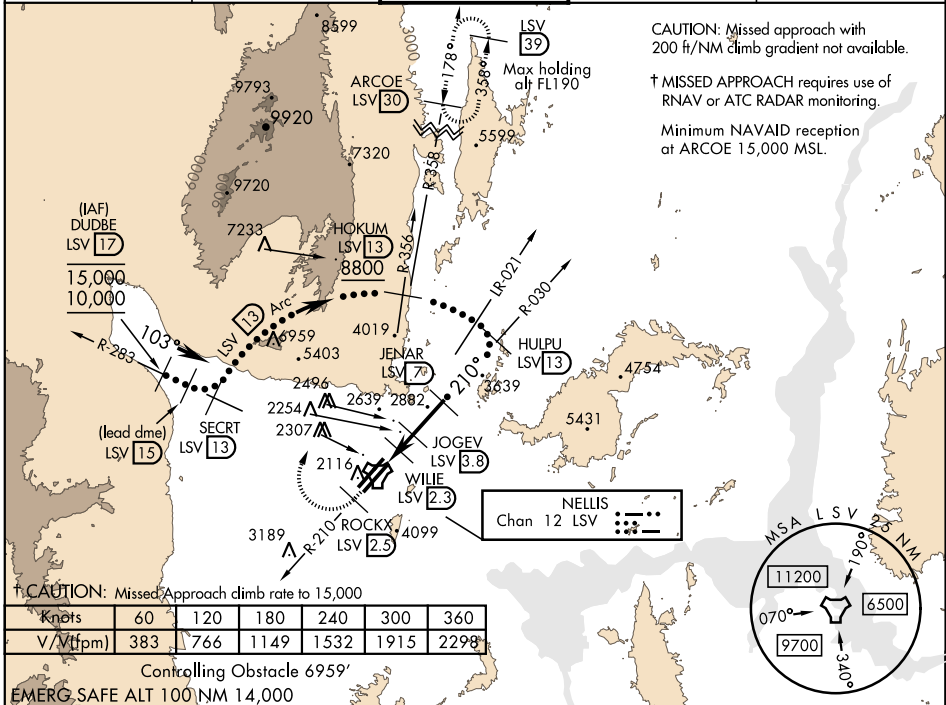
JAL-227 [USAF] NELLIS AFB (KLSV)

* When ALS inop, increase CAT CDE vis to 1 3/4 miles.
 ** Circling not authorized E of Rwy 3R-21L.



† MISSED APPROACH: Climb to 15,000, intercept LSV TACAN R-210 to 2.5 DME (ROCKX), then climbing right turn heading 020° to join LSV R-358 to ARCOE and hold, continue climb in hold to 15,000. Missed approach not for civil use.

| | | | | |
|------------|------------------------------|---------------------------|---------------------|----------------------|
| ATIS 270.1 | NELLIS APP CON 124.95 273.55 | NELLIS TOWER 132.55 327.0 | GND CON 121.8 275.8 | CLNC DEL 120.9 289.4 |
|------------|------------------------------|---------------------------|---------------------|----------------------|

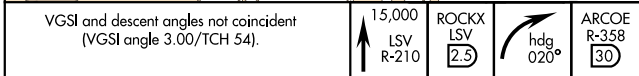


† CAUTION: Missed Approach climb rate to 15,000

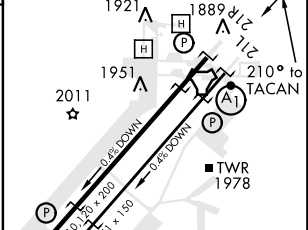
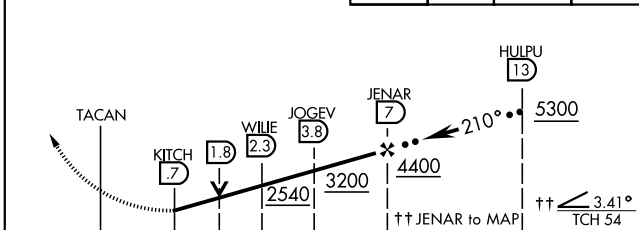
| | | | | | | |
|------------|-----|-----|------|------|------|------|
| Knots | 60 | 120 | 180 | 240 | 300 | 360 |
| V/Vt (fpm) | 383 | 766 | 1149 | 1532 | 1915 | 2298 |

Controlling Obstacle 6959'

EMERG. SAFE ALT 100 NM 14,000



| | | |
|-----------|---------------|---------------|
| ELEV 1869 | TDZE 21L 1865 | TDZE 21R 1869 |
|-----------|---------------|---------------|



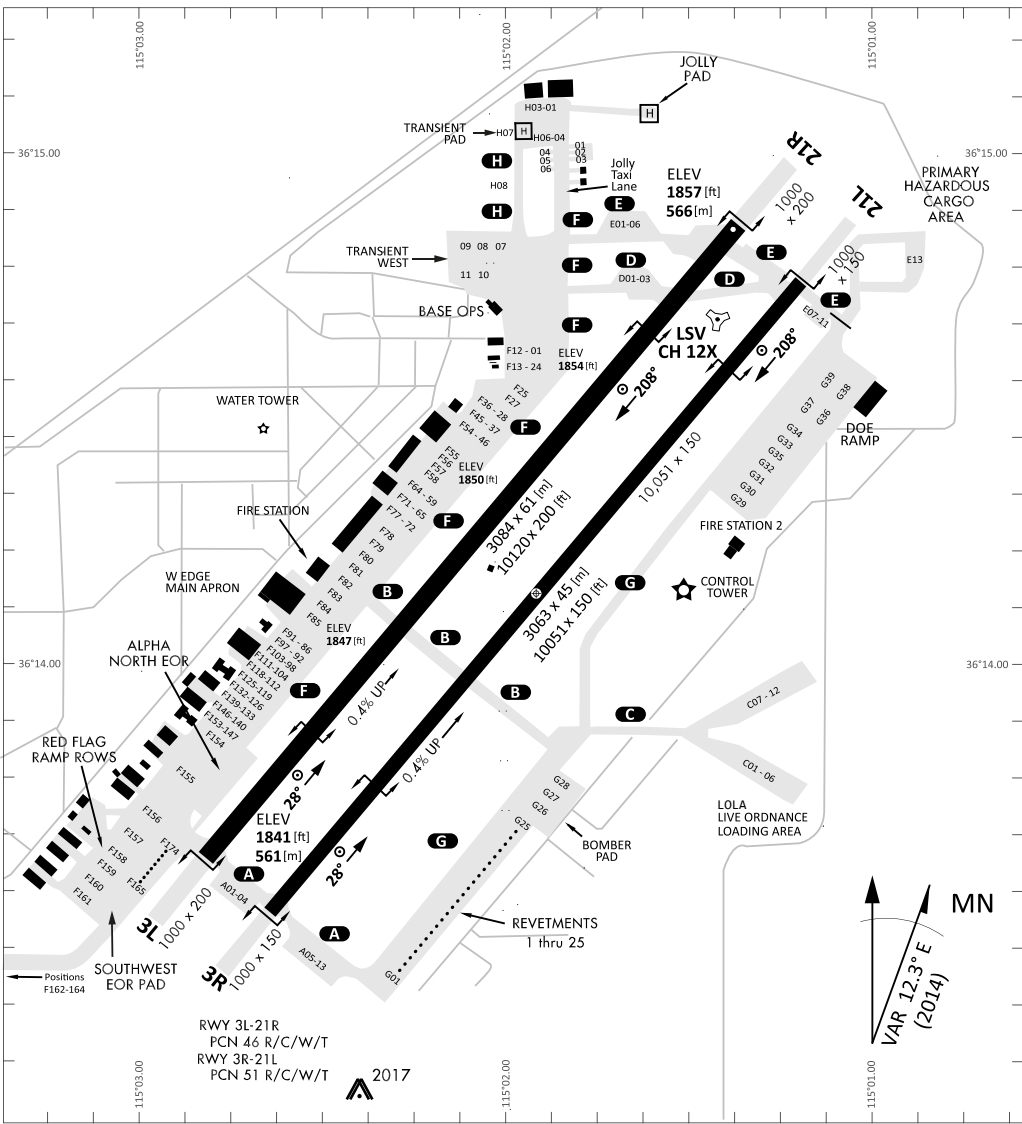
| CATEGORY | C | D | E |
|--------------|-------------------------------|------------------------|-------------------------|
| S-21L * | 2460-1 1/4 | 595 (600-1 1/4) | |
| SIDESTEP 21R | 2460-1 | 591 (600-1) | |
| CIRCLING ** | 2620-2 1/4 751 (800-2 1/4) | 2840-3 971 (1000-3) | 3040-3 1171 (1200-3) |

HIRL all Rwy

HI-TACAN Y RWY 21L

SW-4, 05 DEC 2019 to 02 JAN 2020

SW-4, 05 DEC 2019 to 02 JAN 2020



RWY 3L-21R
 PCN 46 R/C/W/T
 RWY 3R-21L
 PCN 51 R/C/W/T
 2017

| PAR | RWY | CAT | MINIMA | | ARP | ELEV | Scale 1:35'500 | |
|-----|-----|---------|------------------------------|-------|---------------------------------|----------------------|---------------------------------|--|
| | 21L | A B D E | 2057 - 0.8 200 (200-0.8/1.6) | GS 3° | 36° 14.060° N 115° 01.058° W | 1857 [ft] 566 [m] | 0 300 600 900 1200 1500 [m] | |
| | 3R | A B D E | 2057 - 0.8 200 (200-0.8/1.6) | GS 3° | | | 0 1000 2000 3000 4000 5000 [ft] | |
| SRA | 21R | A C D E | 2257 - 1.2 350 (350-1.2/1.6) | | | | | |
| | 3L | A C D E | 2257 - 1.2 350 (350-1.2/1.6) | | | | | |

| RWY | TORA | TODA | ASDA | LDA | PSN | THR | ALS |
|-----|---------------------|---------------------|---------------------|---------------------|--------------|---------------|-----|
| 21L | 10051 [ft] 3063 [m] | 11051 [ft] 3368 [m] | 11051 [ft] 3368 [m] | 10051 [ft] 3063 [m] | 36°14.043' N | 115°01.018' W | ⊕ |
| 3R | 10120 [ft] 3084 [m] | 11120 [ft] 3398 [m] | 11120 [ft] 3398 [m] | 10120 [ft] 3084 [m] | 36°13.029' N | 115°02.038' W | |

| ATIS | NELLIS GROUND | NELLIS TOWER | NELLIS CONTROL | TACAN | ILS RWY 21L | NELLIS EAST | NELLIS WEST |
|-------------|-------------------|------------------|----------------|---------|-------------|-------------|-------------|
| 270.100 MHz | 275.800 121.800 | 327.000 132.55 | 317.525 | LSV 12X | 109.10 Mhz | 384.400 | 385.000 |