

**MISSION DATA CARD**

OPORD		Callsign		Mission		Date/Time		
2873/2024		Monster 1		Training		062001MAY24		
Task	DB - Gun - AAR					Freq		
AO	CAPE PYLA BOMBING RANGE					132.15		
Departure				Recovery				
RWY10 VFR				RWY10 VFR				
#	Callsign		Pilot		IFF	TCN	LSR	NET
-1	Monster 1-1		Toolface		1411	21Y	1611	21/01
-2	Monster 1-2		Stoner		1412	84Y	1612	21/02

**LOADOUT**

A/A	A9M				GUN	100% CM	
A/G	7M282L, 12xM82				CHF	240	
POD	A184, TGP				FLR	240	
TKS					FUEL	100%	

**TOLD**

	Takeoff	Target	Joker	Bingo	Land
FUEL	11087				

**AIRBASES**

	Name	TCN	ATIS	GND	TWR	RWY	Elev	ILS
Dep	Akrotiri AFB	107X	288.2	240.1	339.85	28	62	109.7
Arr	Akrotiri AFB	107X	288.2	240.1	339.85	28	62	109.7

**FLIGHTPLAN**

#	Name	Navaid/Coords/DME	ALT	TOT
1	ECHO	N34 42.600 E033 10	5500	
2	BOMBCIRCLE EAST	N34 57.009 E033 52.153		
3	STRAFE PIT W	N34 57.085 E033 51.111		
4	EMILI	N34 38.389 E034 02.586	16000	
5	LAKE	N34 45.150 E032 55.400	5000	
6	INITIAL 28	N34 33.700 E033 05.840	2000	
7	INITIAL 10	N34 37.150 E032 52.670	2000	

**COMMS**

Radio	Usage
1	132.15
2	2 - 4 - 16 - 2 - 4
3	32.00

**SUPPORT****Tanker**

Callsign	TCN	Freq	ALT	TAS
SHELL 3	93Y	278.75	FL170	215
Pos	SHELL3: (N3436 E03419)			

## OTHER FLIGHTS

Callsign	Mission	Airframe	Freq	TCN	Grpld	Laser
Tiger 1	Training	2x F/A-18C	261.15	1/64	1	155X
AO		Task	Hunter/Killer Training SA2/SAx Range			
Raptor 1	Training	4x F-16C	134.0	1/64		162X
AO	ETTR	Task	Formation Procedures			
Tiger 2	Training	2x F/A-18C	261.25	1/64	1	154X
AO		Task	Hunter/Killer Training SA2/SAx Range			
Edelweiss 1	Training	1x F/A-18C	264.15	1/64		171X
AO		Task				
T-Rex 2	Training	2x A-10C	132.25	21/84	25	156X
AO	CAPE PYLA BOMBING RANGE	Task	DB - Gun - AAR			
Beast 3	Training	2x A-10C	132.35	21/84	23	153X
AO	CAPE PYLA BOMBING RANGE	Task	DB - Gun - AAR			

**RADIO CHANNELS**

#	Freq	Name
1		Flight/Squadron specific
2	288.2	Akrotiri ATIS
3	240.1	Akrotiri Ground
4	339.85	Aktrotiri Tower
5	335.05	Akrotiri Approach
6	360.1	Incirlik Tower
7	371.35	Incirlik Ground
8	377.475	Incirlik ATIS
9		No Preset
10	127.3	Paphos ATIS
11	353.8	Paphos Tower
12	304.0	CVN-73 George Washington
13	302.0	LHA-1 Tarawa
14	259.0	CV-59 Forrestal
15		No Preset
16	377.8	Overlord
17	265.0	KC-135 Texaco-1 medium/slow
18	319.8	KC-135 Arco-1
19	360.8	KC-135MPRS Arco-2
20	256.0	S-3B Recovery Tanker

**RAMROD**

0	1	2	3	4	5	6	7	8	9
J	O	C	U	L	A	R	I	T	Y

**KTC 1400 C**

	0	1	2	3	4	5	6	7	8	9
A	LNCP	WRK	VQD	FG	TM	OUB	IE	XJ	HS	YA
B	QVRW	GOL	NFT	KS	HE	BMY	ID	XJ	CA	UP
C	XIMC	BAR	SUV	WF	QE	NLT	JK	YO	DH	PG
D	KMWL	CDQ	UIF	GB	RP	OAJ	XE	VY	TH	SN
E	EMIC	RYO	TWH	XU	SP	KLD	VG	BN	AJ	QF
F	NIOJ	KSW	UHT	DY	RB	QFC	AE	GL	PM	XV
G	VTAQ	IPL	KUS	JF	NX	OWC	GM	YD	BR	EH
H	IBJG	MPH	SCQ	RD	AY	ETW	XO	FV	NU	KL
I	IRWG	VKM	USO	XB	LY	JFT	ED	NP	AC	HQ
J	SFPQ	BNA	HTM	OR	UL	EVD	CX	GY	WK	JI
K	OANK	WMX	CTU	FY	SV	PHR	DQ	GI	JE	BL
L	XUPV	KWN	IFY	CM	SJ	TQA	HO	RG	LE	DB
M	LGEK	MRN	YJT	AS	HD	OVW	XP	FI	QB	UC
N	RXED	QYN	MKB	VJ	AF	SPG	LC	HW	TU	IO
O	HBTF	RAG	XYL	EQ	IV	ONU	SC	JW	PD	MK
P	EBLU	RGY	SOX	PC	FQ	WHN	MT	DA	IV	JK
Q	YHDX	ROT	NJE	IK	CB	UMA	GV	WL	QS	PF
R	IKSG	TRA	VLU	OQ	EW	FPH	JY	CD	XN	MB
S	OYFS	CUL	TPW	QI	AX	HKD	VE	BJ	NR	MG
T	FJGO	VBS	TXL	IR	EK	NCP	DH	UA	QY	MW
U	YHJG	UMX	LAO	QV	KD	EPR	CW	TS	IN	FB
V	DVCL	PYK	BQA	NS	ME	FIO	UJ	WH	GT	RX
W	YVWM	OCB	XAE	NR	UD	QPI	TL	FK	HG	SJ
X	ILEK	VPJ	WHM	NC	DT	RQY	XG	OS	AB	FU
Y	PSCT	JRY	LVD	MQ	EN	OFK	UI	WG	AX	HB

**NAVAIDS**

<b>Id</b>	<b>Name</b>	<b>Channel</b>	<b>Position</b>	<b>Elevation</b>
DAN	Incirlik	21	N37 00.950 E035 26.883	243
AKR	Akrotiri	107	N34 34.765 E032 57.769	147
PHA	Paphos	79	N34 42.997 E032 28.963	35
RMD	Ramat David	84	N32 39.892 E035 11.265	136
OS66	Kuweires Military Aviation Institute	36	N36 11.362 E037 34.226	1200

**FOR DCS  
 USE ONLY**



ATIS	AKROTIRI GND	AKROTIRI TWR	OVERLORD CONTROL	TACAN	FIELD ELEVATION
288.20 MHz	240.10   122.10	339.85   130.075	377.8	AKR 107X	<b>75 [ft] 23 [m]</b>



ATIS

288.20

AKROTIRI GROUND

240.10

AKROTIRI TOWER

339.85

OVERLORD

377.80

NOT FOR CIVIL USE

CAUTION: If unable to comply  
with restrictions advise ATC  
prior to departure.

## ARR / DEP ROUTE DESCRIPTION

ARRIVAL GENERAL

Pass Entry at 5.000' or below. Overhead Brake RWY 10: pass INITIAL 10 at 2.000' MSL.  
Straight-in RWY 10 : pass INITIAL 1.500' or below.

ARR RWY10 PAPA / LAKE: Direct initial.

ARR RWY10 SIERRA: Intercept ARC 7 of AKR to INITIAL 10.

ARR ECHO: no ENTRY.

DEPARTURE GENERAL

Pass Departure end of runway at 1.000' AGL or below. Keep RWY heading until coastline.

DEP RWY10 ECHO: Direct EXIT.

DEP RWY10 SIERRA: Climbing right turn, intercept R180 AKR to Sierra.

DEP RWY10 PAPA: Climbing right turn until R180 AKR, then direct Papa

DEP LAKE: no EXIT.

ATIS

288.20

AKROTIRI GROUND

240.10

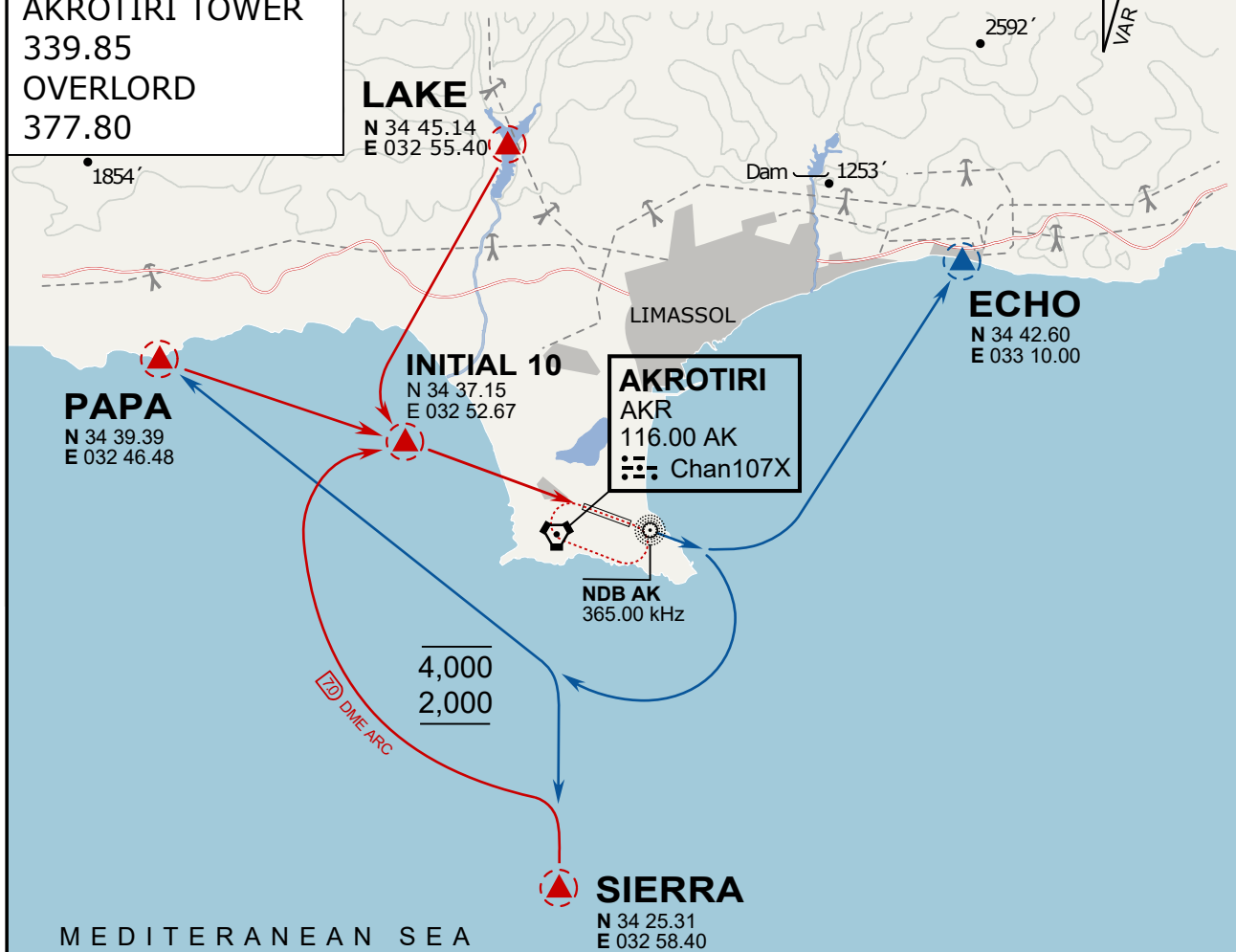
AKROTIRI TOWER

339.85

OVERLORD

377.80

NOT FOR CIVIL USE

CAUTION: If unable to comply  
with restrictions advise ATC  
prior to departure.

## ARR / DEP ROUTE DESCRIPTION

ARRIVAL GENERAL

Pass Entry at 5.000' or below. Overhead Brake RWY 10: pass INITIAL 10 at 2.000' MSL.  
Straight-in RWY 10 : pass INITIAL 1.500' or below.

ARR RWY10 PAPA / LAKE: Direct initial.

ARR RWY10 SIERRA: Intercept ARC 7 of AKR to INITIAL 10.

ARR ECHO: no ENTRY.

DEPARTURE GENERAL

Pass Departure end of runway at 1.000' AGL or below. Keep RWY heading until coastline.

DEP RWY10 ECHO: Direct EXIT.

DEP RWY10 SIERRA: Climbing right turn, intercept R180 AKR to Sierra.

DEP RWY10 PAPA: Climbing right turn until R180 AKR, then direct Papa

DEP LAKE: no EXIT.