

MISSION DATA CARD

OPORD		Callsign		Mission		Date/Time		
2871/2024		Edelweiss 1		Training		062000MAY24		
Task						Freq		
AO						264.15		
Departure				Recovery				
RWY28 VFR				RWY10 VFR				
#	Callsign		Pilot		IFF	TCN	LSR	NET
-1	Edelweiss 1-1		Poet		1711	1Y	1711	

LOADOUT

A/A						GUN	
A/G						CHF	
POD						FLR	
TKS						FUEL	

TOLD

	Takeoff	Target	Joker	Bingo	Land
FUEL	10803				

AIRBASES

	Name	TCN	ATIS	GND	TWR	RWY	Elev	ILS
Dep	Akrotiri AFB	107X	288.2	240.1	339.85	28	62	109.7
Arr	Akrotiri AFB	107X	288.2	240.1	339.85	28	62	109.7

OTHER FLIGHTS

Callsign	Mission	Airframe	Freq	TCN	Grpld	Laser
Tiger 1	Training	2x F/A-18C	261.15	1/64	1	155X
AO		Task	Hunter/Killer Training SA2/SAx Range			
Raptor 1	Training	4x F-16C	134.0	1/64		162X
AO	ETTR	Task	Formation Procedures			
Tiger 2	Training	2x F/A-18C	261.25	1/64	1	154X
AO		Task	Hunter/Killer Training SA2/SAx Range			
T-Rex 2	Training	2x A-10C	132.25	21/84	25	156X
AO	CAPE PYLA BOMBING RANGE	Task	DB - Gun - AAR			
Monster 1	Training	2x A-10C	132.15	21/84	21	161X
AO	CAPE PYLA BOMBING RANGE	Task	DB - Gun - AAR			
Beast 3	Training	2x A-10C	132.35	21/84	23	153X
AO	CAPE PYLA BOMBING RANGE	Task	DB - Gun - AAR			

RADIO CHANNELS

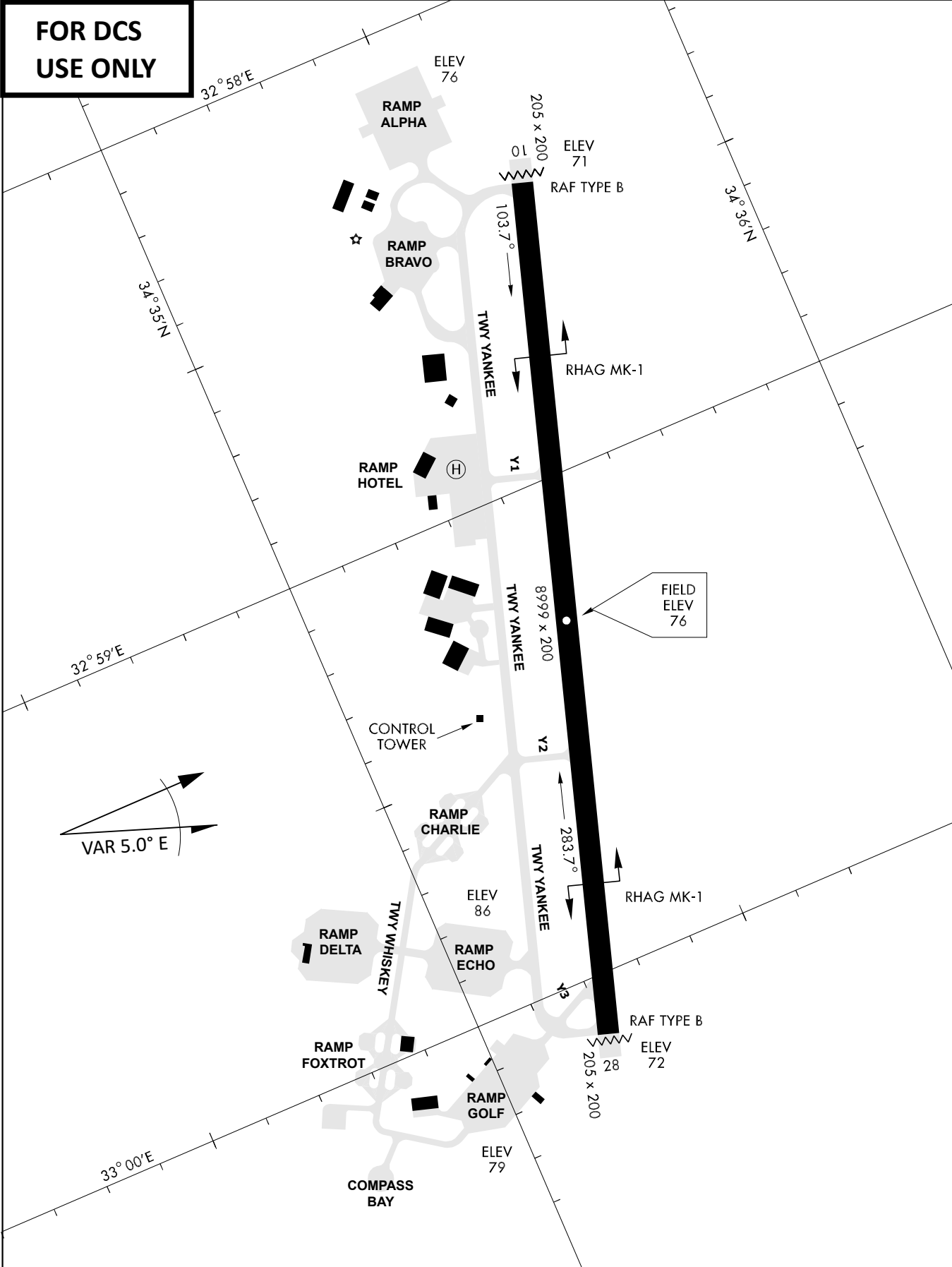
#	Freq	Name
1		Flight/Squadron specific
2	288.2	Akrotiri ATIS
3	240.1	Akrotiri Ground
4	339.85	Aktrotiri Tower
5	335.05	Akrotiri Approach
6	360.1	Incirlik Tower
7	371.35	Incirlik Ground
8	377.475	Incirlik ATIS
9		No Preset
10	127.3	Paphos ATIS
11	353.8	Paphos Tower
12	304.0	CVN-73 George Washington
13	302.0	LHA-1 Tarawa
14	259.0	CV-59 Forrestal
15		No Preset
16	377.8	Overlord
17	265.0	KC-135 Texaco-1 medium/slow
18	319.8	KC-135 Arco-1
19	360.8	KC-135MPRS Arco-2
20	256.0	S-3B Recovery Tanker

RAMROD										
0	1	2	3	4	5	6	7	8	9	
J	O	C	U	L	A	R	I	T	Y	
KTC 1400 C										
	0	1	2	3	4	5	6	7	8	9
A	LNCP	WRK	VQD	FG	TM	OUB	IE	XJ	HS	YA
B	QVRW	GOL	NFT	KS	HE	BMY	ID	XJ	CA	UP
C	XIMC	BAR	SUV	WF	QE	NLT	JK	YO	DH	PG
D	KMWL	CDQ	UIF	GB	RP	OAJ	XE	VY	TH	SN
E	EMIC	RYO	TWH	XU	SP	KLD	VG	BN	AJ	QF
F	NIOJ	KSW	UHT	DY	RB	QFC	AE	GL	PM	XV
G	VTAQ	IPL	KUS	JF	NX	OWC	GM	YD	BR	EH
H	IBJG	MPH	SCQ	RD	AY	ETW	XO	FV	NU	KL
I	IRWG	VKM	USO	XB	LY	JFT	ED	NP	AC	HQ
J	SFPQ	BNA	HTM	OR	UL	EVD	CX	GY	WK	JI
K	OANK	WMX	CTU	FY	SV	PHR	DQ	GI	JE	BL
L	XUPV	KWN	IFY	CM	SJ	TQA	HO	RG	LE	DB
M	LGEK	MRN	YJT	AS	HD	OVW	XP	FI	QB	UC
N	RXED	QYN	MKB	VJ	AF	SPG	LC	HW	TU	IO
O	HBTF	RAG	XYL	EQ	IV	ONU	SC	JW	PD	MK
P	EBLU	RGY	SOX	PC	FQ	WHN	MT	DA	IV	JK
Q	YHDX	ROT	NJE	IK	CB	UMA	GV	WL	QS	PF
R	IKSG	TRA	VLU	OQ	EW	FPH	JY	CD	XN	MB
S	OYFS	CUL	TPW	QI	AX	HKD	VE	BJ	NR	MG
T	FJGO	VBS	TXL	IR	EK	NCP	DH	UA	QY	MW
U	YHJG	UMX	LAO	QV	KD	EPR	CW	TS	IN	FB
V	DVCL	PYK	BQA	NS	ME	FIO	UJ	WH	GT	RX
W	YVWM	OCB	XAE	NR	UD	QPI	TL	FK	HG	SJ
X	ILEK	VPJ	WHM	NC	DT	RQY	XG	OS	AB	FU
Y	PSCT	JRY	LVD	MQ	EN	OFK	UI	WG	AX	HB

NAVAIDS

Id	Name	Channel	Position	Elevation
DAN	Incirlik	21	N37 00.950 E035 26.883	243
AKR	Akrotiri	107	N34 34.765 E032 57.769	147
PHA	Paphos	79	N34 42.997 E032 28.963	35
RMD	Ramat David	84	N32 39.892 E035 11.265	136
OS66	Kuweires Military Aviation Institute	36	N36 11.362 E037 34.226	1200

**FOR DCS
 USE ONLY**

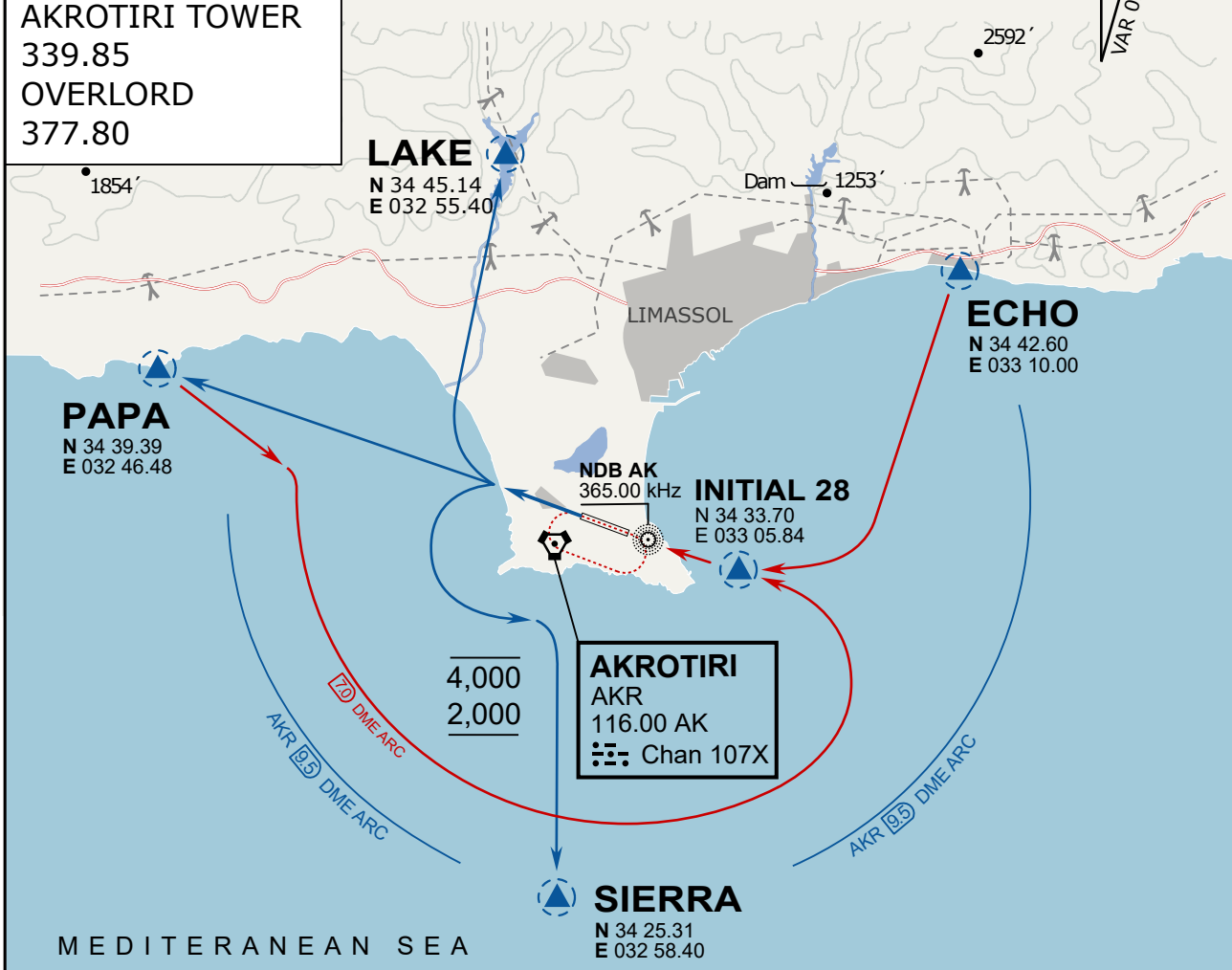


ATIS	AKROTIRI GND	AKROTIRI TWR	OVERLORD CONTROL	TACAN	FIELD ELEVATION
288.20 MHz	240.10 122.10	339.85 130.075	377.8	AKR 107X	75 [ft] 23 [m]

ATIS
 288.20
AKROTIRI GROUND
 240.10
AKROTIRI TOWER
 339.85
OVERLORD
 377.80

NOT FOR CIVIL USE

CAUTION: If unable to comply with restrictions advise ATC prior to departure.



ARR / DEP ROUTE DESCRIPTION

STRAIGHT-IN RWY28

Pass ENTRY at 5.000' MSL or below, pass INITIAL at 1.500' MSL or below.

OVERHEAD BREAK RWY28

Pass ENTRY at 5.000' MSL or below, pass INITIAL at 2.000' MSL, break to the south.

DEPARTURE GENERAL

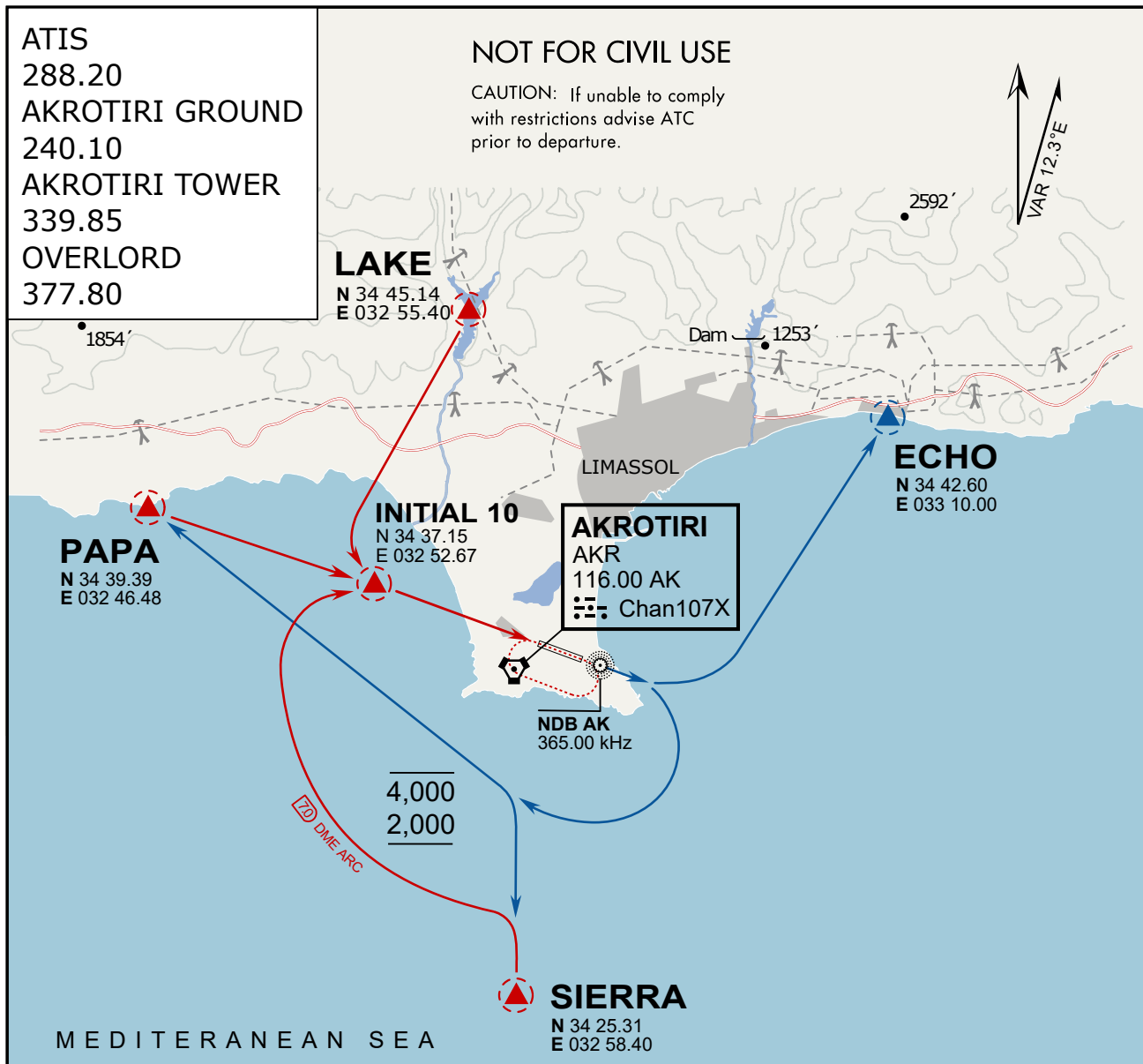
Pass Departure end of runway at 1.000' or below.

DEP RWY28 PAPA: Fly straight ahead to exit.

DEP RWY28 LAKE: Fly straight ahead until coast, than right turn direct exit.

DEP RWY28 SIERRA: Fly straight ahead until coastline, then climbing left turn, intercept AKR R-180 to exit.

DEP ECHO: no exit.



ARR / DEP ROUTE DESCRIPTION

ARRIVAL GENERAL

Pass Entry at 5.000' or below. Overhead Brake RWY 10: pass INITIAL 10 at 2.000' MSL.
Straight-in RWY 10 : pass INITIAL 1.500' or below.

ARR RWY10 PAPA / LAKE: Direct initial.

ARR RWY10 SIERRA: Intercept ARC 7 of AKR to INITIAL 10.

ARR ECHO: no ENTRY.

DEPARTURE GENERAL

Pass Departure end of runway at 1.000' AGL or below. Keep RWY heading until coastline.

DEP RWY10 ECHO: Direct EXIT.

DEP RWY10 SIERRA: Climbing right turn, intercept R180 AKR to Sierra.

DEP RWY10 PAPA: Climbing right turn until R180 AKR, then direct Papa

DEP LAKE: no EXIT.