

**MISSION DATA CARD**

OPORD		Callsign		Mission		Date/Time	
2869/2024		Tiger 2		Training		062000MAY24	
Task	Hunter/Killer Training SA2/SAx Range					Freq	
AO						261.25	
Departure				Recovery			
CAT				CASE I			
#	Callsign	Pilot	IFF	TCN	LSR	NET	
-1	Tiger 2-1	Hawk	1021	1Y	1541	01/01	
-2	Tiger 2-2	Kosmoss	1022	64Y	1542	01/02	
-2	Tiger 2-2	Kosmoss	1022	64Y	1542	01/02	

**LOADOUT**

A/A	2xA9X, A120C	GUN	100% HEI-T
A/G	2xA88C, 2xG38, 3x ADM-141A - BRU-42	CHF	90
POD	TGP	FLR	30
TKS	FPU-8A	FUEL	100%

**TOLD**

	Takeoff	Target	Joker	Bingo	Land
FUEL	13047			4000	2000

**AIRBASES**

	Name	TCN	ATIS	GND	TWR	RWY	Elev	ILS
Dep	CVN-73 USS G. Washington	55X		ICLS 12	304.0			
Arr	CVN-73 USS G. Washington	55X		ICLS 12	304.0			
Div	Akrotiri AFB	107X	288.2	240.1	339.85	28	62	109.7

**FLIGHTPLAN**

#	Name	Navaid/Coords/DME	ALT	TOT
1	Fence In	N34 28 25.432 E034 11 01.099	25000	
2	IP	N35 08 13.541 E034 22 05.023	25000	
3	Target Area SA2/SA3	N35 30 33.268 E034 15 18.640	0	
4	Cold	N34 58 00.799 E034 05 06.704	25000	
5	AAR TEX2	N34 24 51.494 E034 05 41.554	15000	
6	RAF Akrotiri	N34 35 26 E032 59 17	3000	
7	CVN-73 George Washington	N33 42 43.617 E033 02 01.315	3000	

**COMMS**

Radio	Usage
1	12(GW), 16(OL), 9(TX2), 16(OL), 12(GW) / Alternate 4(AT)
2	Inhouse 261.25
3	MIDS A:23 / B:44

**SUPPORT****Tanker**

Callsign	TCN	Freq	ALT	TAS
ARCO 2	41Y	360.8	FL220	400
	Pos	ARCO2: (N3653 E03452)		
TEXACO 2	44Y	244.78	FL150	250
	Pos	TEXACO2: (N3424 E03403)		

**AWACS**

Callsign	Freq	ALT	Pos
OVERLORD2	377.8	FL320	N3713 E03643 - N3714 E03749

## OTHER FLIGHTS

Callsign	Mission	Airframe	Freq	TCN	Grpld	Laser
Tiger 1	Training	2x F/A-18C	261.15	1/64	1	155X
AO		Task	Hunter/Killer Training SA2/SAx Range			
Raptor 1	Training	4x F-16C	134.0	1/64		162X
AO	ETTR	Task	Formation Procedures			
Edelweiss 1	Training	1x F/A-18C	264.15	1/64		171X
AO		Task				
T-Rex 2	Training	2x A-10C	132.25	21/84	25	156X
AO	CAPE PYLA BOMBING RANGE	Task	DB - Gun - AAR			
Monster 1	Training	2x A-10C	132.15	21/84	21	161X
AO	CAPE PYLA BOMBING RANGE	Task	DB - Gun - AAR			
Beast 3	Training	2x A-10C	132.35	21/84	23	153X
AO	CAPE PYLA BOMBING RANGE	Task	DB - Gun - AAR			

**RADIO CHANNELS**

#	Freq	Name
1		Flight/Squadron specific
2	288.2	Akrotiri ATIS
3	240.1	Akrotiri Ground
4	339.85	Aktrotiri Tower
5	335.05	Akrotiri Approach
6	360.1	Incirlik Tower
7	371.35	Incirlik Ground
8	377.475	Incirlik ATIS
9		No Preset
10	127.3	Paphos ATIS
11	353.8	Paphos Tower
12	304.0	CVN-73 George Washington
13	302.0	LHA-1 Tarawa
14	259.0	CV-59 Forrestal
15		No Preset
16	377.8	Overlord
17	265.0	KC-135 Texaco-1 medium/slow
18	319.8	KC-135 Arco-1
19	360.8	KC-135MPRS Arco-2
20	256.0	S-3B Recovery Tanker

**RAMROD**

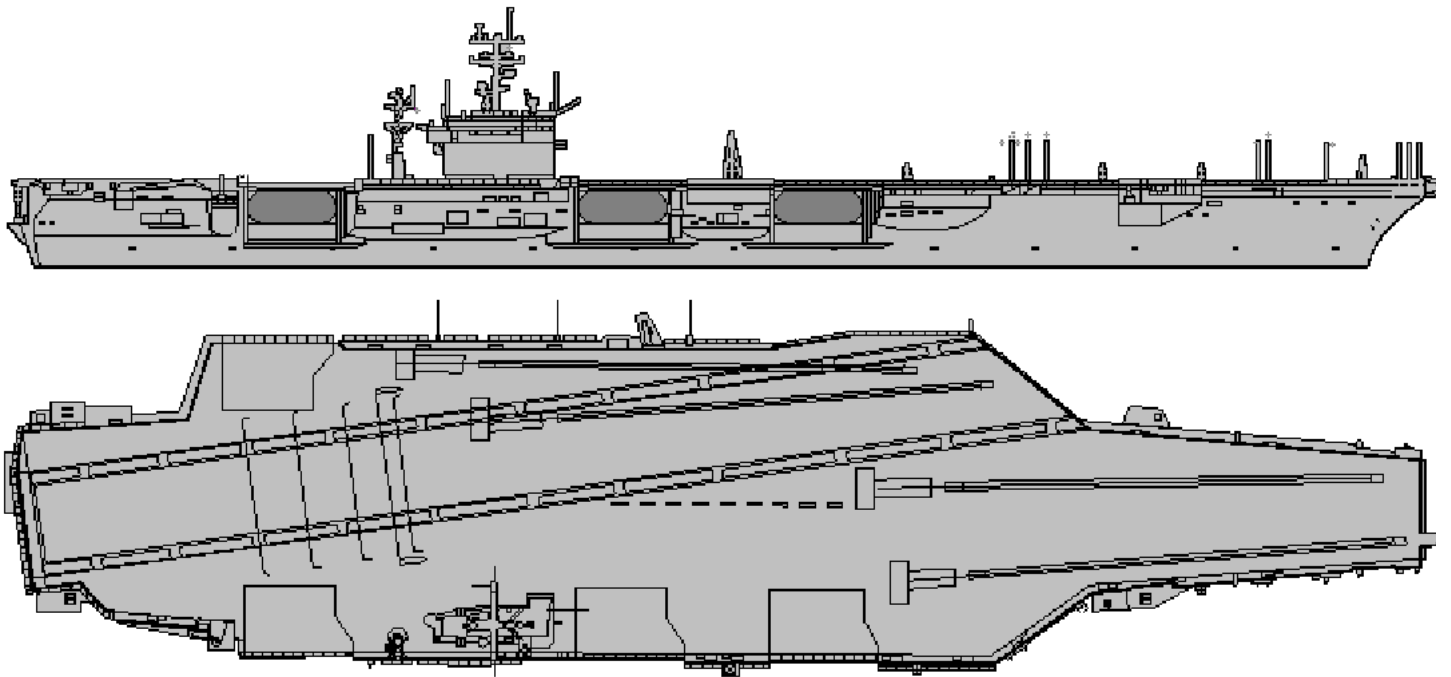
0	1	2	3	4	5	6	7	8	9
J	O	C	U	L	A	R	I	T	Y

**KTC 1400 C**

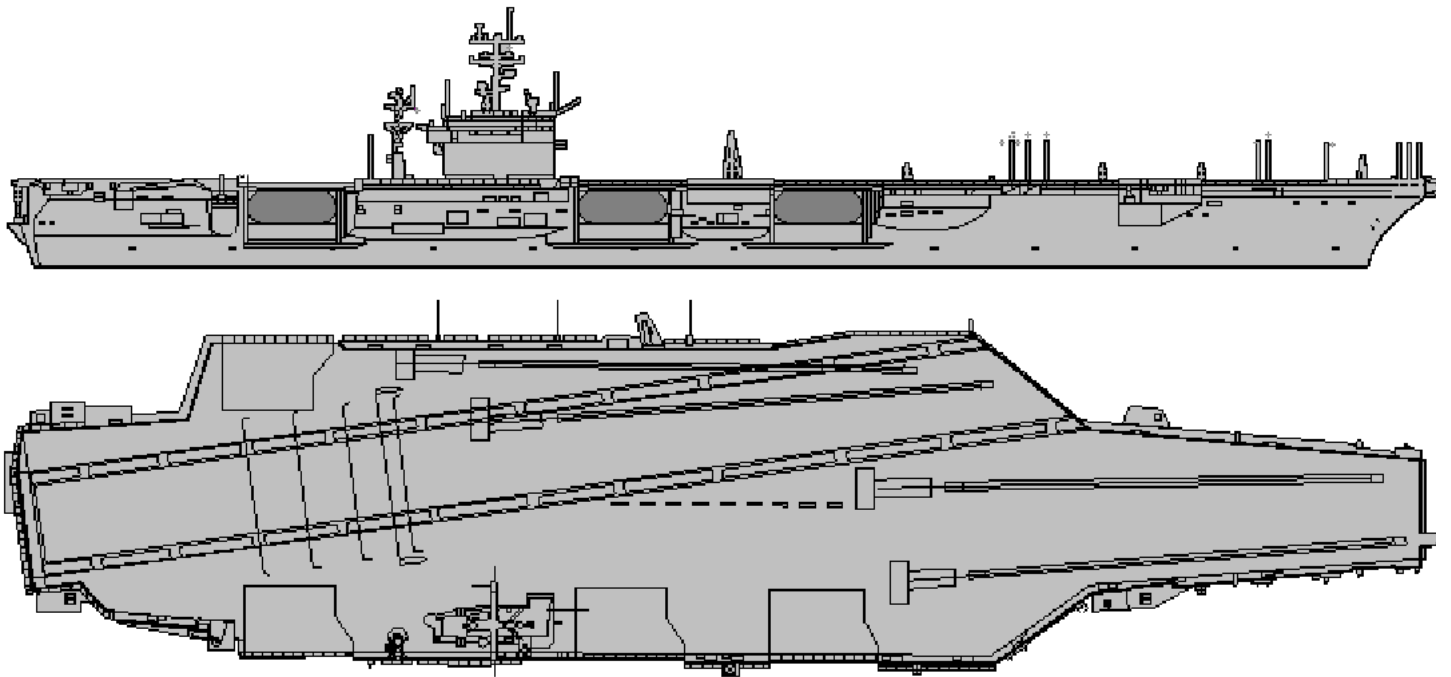
	0	1	2	3	4	5	6	7	8	9
A	LNCP	WRK	VQD	FG	TM	OUB	IE	XJ	HS	YA
B	QVRW	GOL	NFT	KS	HE	BMY	ID	XJ	CA	UP
C	XIMC	BAR	SUV	WF	QE	NLT	JK	YO	DH	PG
D	KMWL	CDQ	UIF	GB	RP	OAJ	XE	VY	TH	SN
E	EMIC	RYO	TWH	XU	SP	KLD	VG	BN	AJ	QF
F	NIOJ	KSW	UHT	DY	RB	QFC	AE	GL	PM	XV
G	VTAQ	IPL	KUS	JF	NX	OWC	GM	YD	BR	EH
H	IBJG	MPH	SCQ	RD	AY	ETW	XO	FV	NU	KL
I	IRWG	VKM	USO	XB	LY	JFT	ED	NP	AC	HQ
J	SFPQ	BNA	HTM	OR	UL	EVD	CX	GY	WK	JI
K	OANK	WMX	CTU	FY	SV	PHR	DQ	GI	JE	BL
L	XUPV	KWN	IFY	CM	SJ	TQA	HO	RG	LE	DB
M	LGEK	MRN	YJT	AS	HD	OVW	XP	FI	QB	UC
N	RXED	QYN	MKB	VJ	AF	SPG	LC	HW	TU	IO
O	HBTF	RAG	XYL	EQ	IV	ONU	SC	JW	PD	MK
P	EBLU	RGY	SOX	PC	FQ	WHN	MT	DA	IV	JK
Q	YHDX	ROT	NJE	IK	CB	UMA	GV	WL	QS	PF
R	IKSG	TRA	VLU	OQ	EW	FPH	JY	CD	XN	MB
S	OYFS	CUL	TPW	QI	AX	HKD	VE	BJ	NR	MG
T	FJGO	VBS	TXL	IR	EK	NCP	DH	UA	QY	MW
U	YHJG	UMX	LAO	QV	KD	EPR	CW	TS	IN	FB
V	DVCL	PYK	BQA	NS	ME	FIO	UJ	WH	GT	RX
W	YVWM	OCB	XAE	NR	UD	QPI	TL	FK	HG	SJ
X	ILEK	VPJ	WHM	NC	DT	RQY	XG	OS	AB	FU
Y	PSCT	JRY	LVD	MQ	EN	OFK	UI	WG	AX	HB

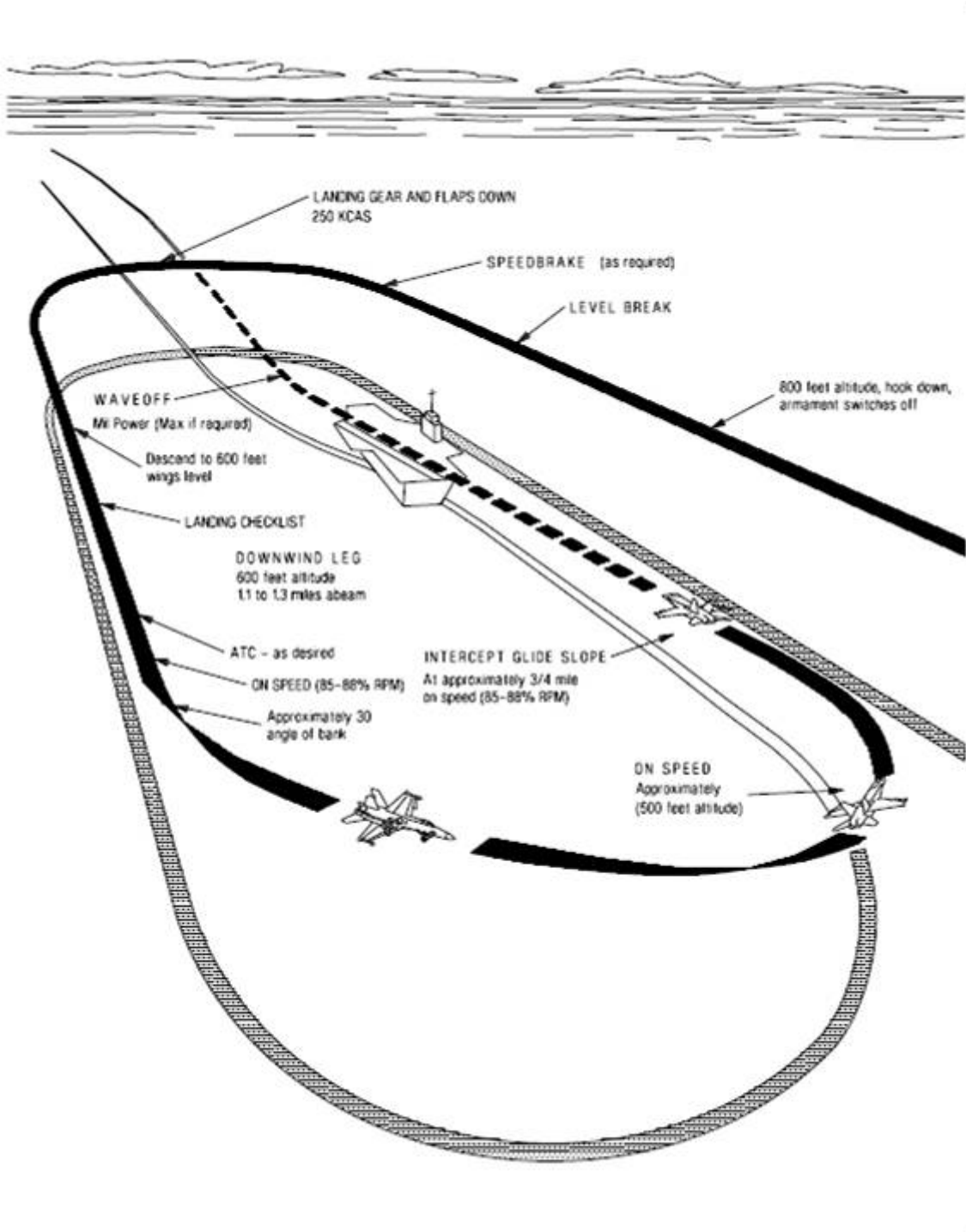
**NAVAIDS**

<b>Id</b>	<b>Name</b>	<b>Channel</b>	<b>Position</b>	<b>Elevation</b>
DAN	Incirlik	21	N37 00.950 E035 26.883	243
AKR	Akrotiri	107	N34 34.765 E032 57.769	147
PHA	Paphos	79	N34 42.997 E032 28.963	35
RMD	Ramat David	84	N32 39.892 E035 11.265	136
OS66	Kuweires Military Aviation Institute	36	N36 11.362 E037 34.226	1200





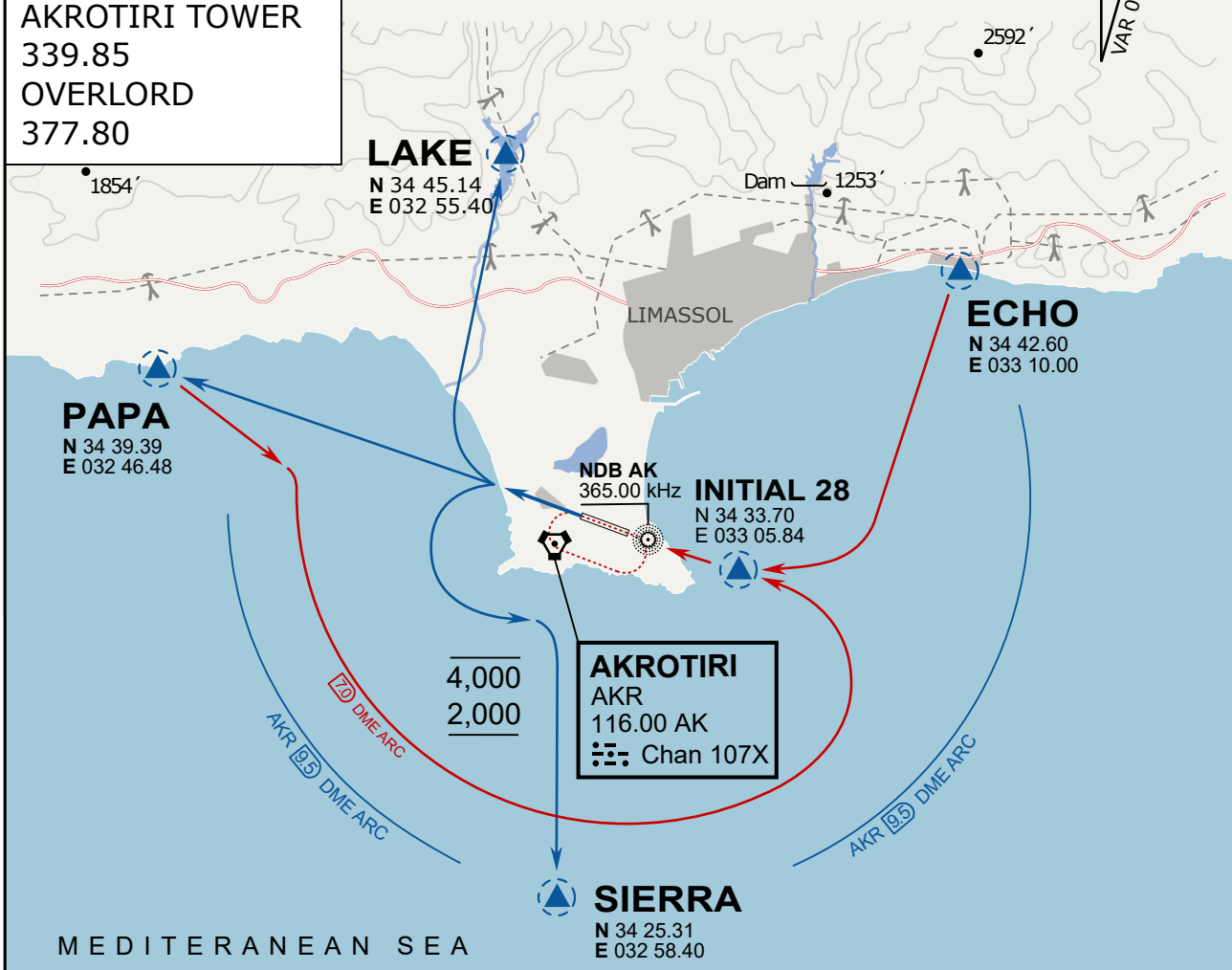




**ATIS**  
 288.20  
**AKROTIRI GROUND**  
 240.10  
**AKROTIRI TOWER**  
 339.85  
**OVERLORD**  
 377.80

**NOT FOR CIVIL USE**

CAUTION: If unable to comply with restrictions advise ATC prior to departure.



### ARR / DEP ROUTE DESCRIPTION

#### STRAIGHT-IN RWY28

Pass ENTRY at 5.000' MSL or below, pass INITIAL at 1.500' MSL or below.

#### OVERHEAD BREAK RWY28

Pass ENTRY at 5.000' MSL or below, pass INITIAL at 2.000' MSL, break to the south.

#### DEPARTURE GENERAL

Pass Departure end of runway at 1.000' or below.

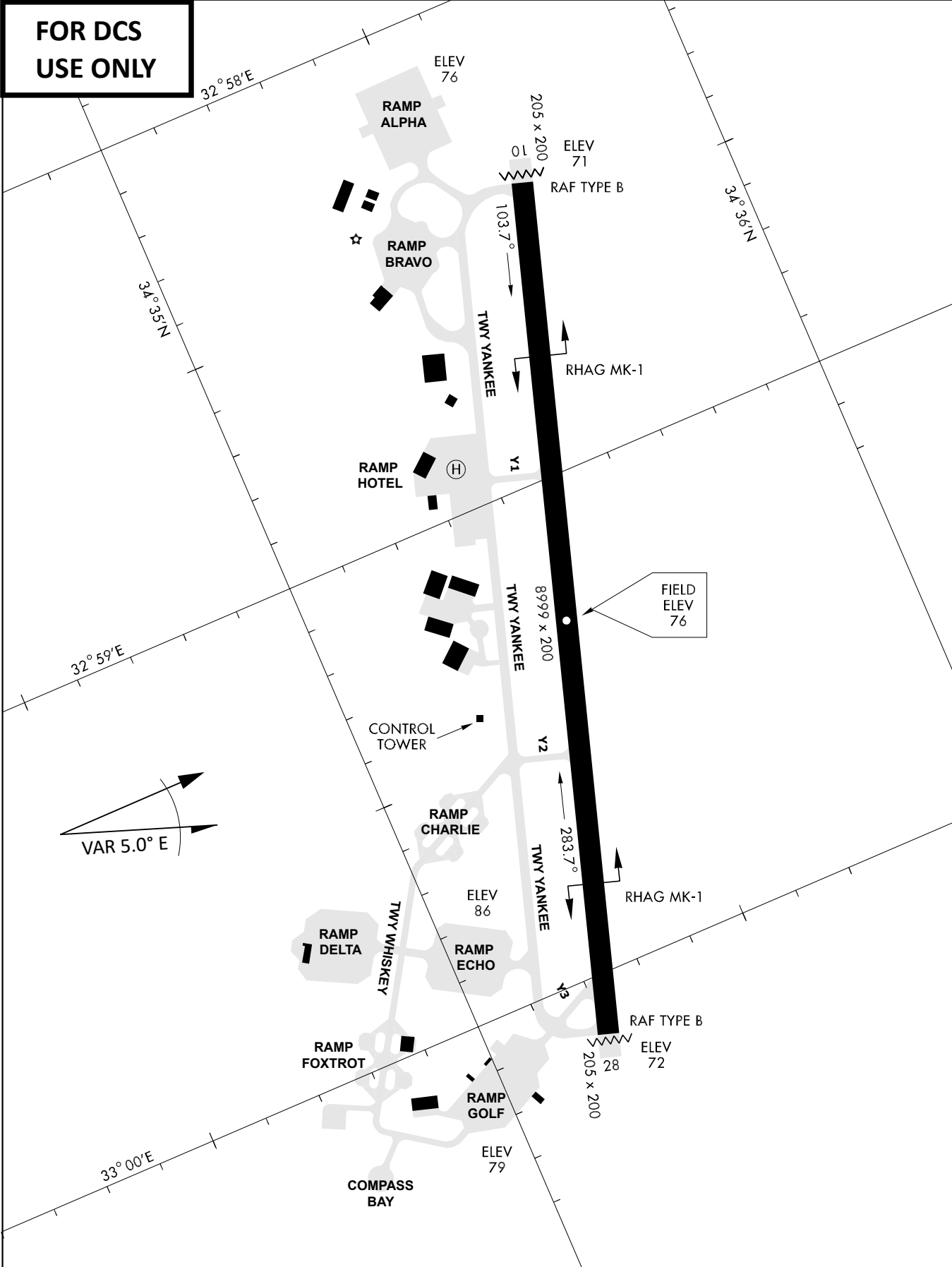
DEP RWY28 PAPA: Fly straight ahead to exit.

DEP RWY28 LAKE: Fly straight ahead until coast, than right turn direct exit.

DEP RWY28 SIERRA: Fly straight ahead until coastline, then climbing left turn, intercept AKR R-180 to exit.

DEP ECHO: no exit.

**FOR DCS  
 USE ONLY**



ATIS	AKROTIRI GND	AKROTIRI TWR	OVERLORD CONTROL	TACAN	FIELD ELEVATION
288.20 MHz	240.10   122.10	339.85   130.075	377.8	AKR 107X	<b>75 [ft] 23 [m]</b>