

MISSION DATA CARD

OPORD		Callsign		Mission		Date/Time		
2865/2024		Edelweiss 1		Training		042029MAY24		
Task						Freq		
AO						264.15		
Departure				Recovery				
RWY28 VFR				RWY10 VFR				
#	Callsign		Pilot		IFF	TCN	LSR	NET
-1	Edelweiss 1-1		Jinx		1711	1Y	1711	

LOADOUT

A/A	2xA120C, 2xA9X				GUN	100% HEI-T	
A/G					CHF	120	
POD					FLR	0	
TKS	FT300				FUEL	100%	

TOLD

	Takeoff	Target	Joker	Bingo	Land
FUEL	9166				

AIRBASES

	Name	TCN	ATIS	GND	TWR	RWY	Elev	ILS
Dep	Akrotiri AFB	107X	288.2	240.1	339.85	28	62	109.7
Arr	Akrotiri AFB	107X	288.2	240.1	339.85	28	62	109.7

FLIGHTPLAN

#	Name	Navaid/Coords/DME	ALT	TOT
1	ECHO	N34 42.600 E033 10	5000	
2	PAPA	N34 39.390 E032 46.480	5000	
3	SIERRA	N34 25.310 E032 58.400	5000	

SUPPORT**Tanker**

Callsign	TCN	Freq	ALT	TAS
ARCO 1	22Y	319.8	FL222	400
Pos	ARCO1: (N3701 E03457)			

OTHER FLIGHTS

Callsign	Mission	Airframe	Freq	TCN	Grpld	Laser
Tiger 1	DEAD	3x F/A-18C	261.15	1/64	1	155X
AO	20B26	Task	ATO 802			

RADIO CHANNELS

#	Freq	Name
1		Flight/Squadron specific
2	288.2	Akrotiri ATIS
3	240.1	Akrotiri Ground
4	339.85	Aktrotiri Tower
5	335.05	Akrotiri Approach
6	360.1	Incirlik Tower
7	371.35	Incirlik Ground
8	377.475	Incirlik ATIS
9		No Preset
10	127.3	Paphos ATIS
11	353.8	Paphos Tower
12	304.0	CVN-73 George Washington
13	302.0	LHA-1 Tarawa
14	259.0	CV-59 Forrestal
15		No Preset
16	377.8	Overlord
17	265.0	KC-135 Texaco-1 medium/slow
18	319.8	KC-135 Arco-1
19	360.8	KC-135MPRS Arco-2
20	256.0	S-3B Recovery Tanker

RAMROD

0	1	2	3	4	5	6	7	8	9
A	L	G	O	R	I	T	H	M	S

KTC 1400 C

	0	1	2	3	4	5	6	7	8	9
A	OJEL	VRW	CIQ	SN	HD	AMK	TX	BP	GU	YF
B	WTHP	JAR	EBS	DK	CI	FUG	XM	VL	YQ	ON
C	LIXD	CMP	FOT	JK	BS	GRH	NU	EA	WV	QY
D	XRVQ	MKH	BSA	JC	LO	WPY	DE	UI	TF	GN
E	SYOD	UQB	RIL	CF	NA	JTP	KM	VG	EX	HW
F	YMFS	HDI	BPJ	WQ	NL	KXT	RA	CV	GO	UE
G	ITXU	CLF	QSP	NV	DY	RBO	MH	AK	WG	EJ
H	HOKM	RUN	WVP	GY	DF	IEL	XC	JB	SA	TQ
I	XHUG	LSW	NTE	AO	JV	KRY	CQ	MD	IP	FB
J	LAYS	CPO	BEM	GW	NQ	RUV	FX	JH	TI	DK
K	HTGR	VXI	YSO	WK	UF	JCP	BN	AD	EL	QM
L	HNIC	YTO	GJM	QB	UP	KRW	VS	LF	AX	ED
M	RIGJ	FKX	OPU	NL	VH	ASC	ET	YM	QW	BD
N	LNUX	ECF	RKB	JS	HT	IDP	GY	WV	AM	QO
O	HKYM	WJE	VXL	BF	ID	OAS	GC	QP	NU	RT
P	MNXK	SHP	DIR	AY	EU	CGJ	WB	TQ	VO	LF
Q	UDOC	RNG	TQH	BS	WM	IJE	LV	PA	XF	YK
R	ADLV	ESQ	OGP	IU	JN	YCX	BR	FT	HK	WM
S	DANJ	TIW	FBM	HU	RP	LEO	VQ	SK	GY	XC
T	CAOH	GEB	FMX	LJ	IN	TQY	WS	KP	UD	RV
U	RSVT	QUI	XDA	WY	PE	JGL	HC	OF	KN	MB
V	XOSF	NTQ	DEH	PR	AL	YIB	MW	JV	GC	UK
W	HBUI	OMC	NLD	TP	EQ	JSX	YR	GW	FK	VA
X	MCLH	PON	GEB	AR	UI	TWS	VJ	XQ	KD	YF
Y	XAEJ	CYU	RWN	HQ	SP	MGK	FI	TD	BO	LV

NAVAIDS

Id	Name	Channel	Position	Elevation
DAN	Incirlik	21	N37 00.950 E035 26.883	243
AKR	Akrotiri	107	N34 34.765 E032 57.769	147
PHA	Paphos	79	N34 42.997 E032 28.963	35
RMD	Ramat David	84	N32 39.892 E035 11.265	136
OS66	Kuweires Military Aviation Institute	36	N36 11.362 E037 34.226	1200

**FOR DCS
 USE ONLY**



ATIS	AKROTIRI GND	AKROTIRI TWR	OVERLORD CONTROL	TACAN	FIELD ELEVATION
288.20 MHz	240.10 122.10	339.85 130.075	377.8	AKR 107X	75 [ft] 23 [m]

ATIS
 288.20
AKROTIRI GROUND
 240.10
AKROTIRI TOWER
 339.85
OVERLORD
 377.80

NOT FOR CIVIL USE

CAUTION: If unable to comply
 with restrictions advise ATC
 prior to departure.



ARR / DEP ROUTE DESCRIPTION

STRAIGHT-IN RWY28

Pass ENTRY at 5.000' MSL or below, pass INITIAL at 1.500' MSL or below.

OVERHEAD BREAK RWY28

Pass ENTRY at 5.000' MSL or below, pass INITIAL at 2.000' MSL, break to the south.

DEPARTURE GENERAL

Pass Departure end of runway at 1.000' or below.

DEP RWY28 PAPA: Fly straight ahead to exit.

DEP RWY28 LAKE: Fly straight ahead until coast, than right turn direct exit.

DEP RWY28 SIERRA: Fly straight ahead until coastline, then climbing left turn, intercept AKR R-180 to exit.

DEP ECHO: no exit.

ATIS

288.20

AKROTIRI GROUND

240.10

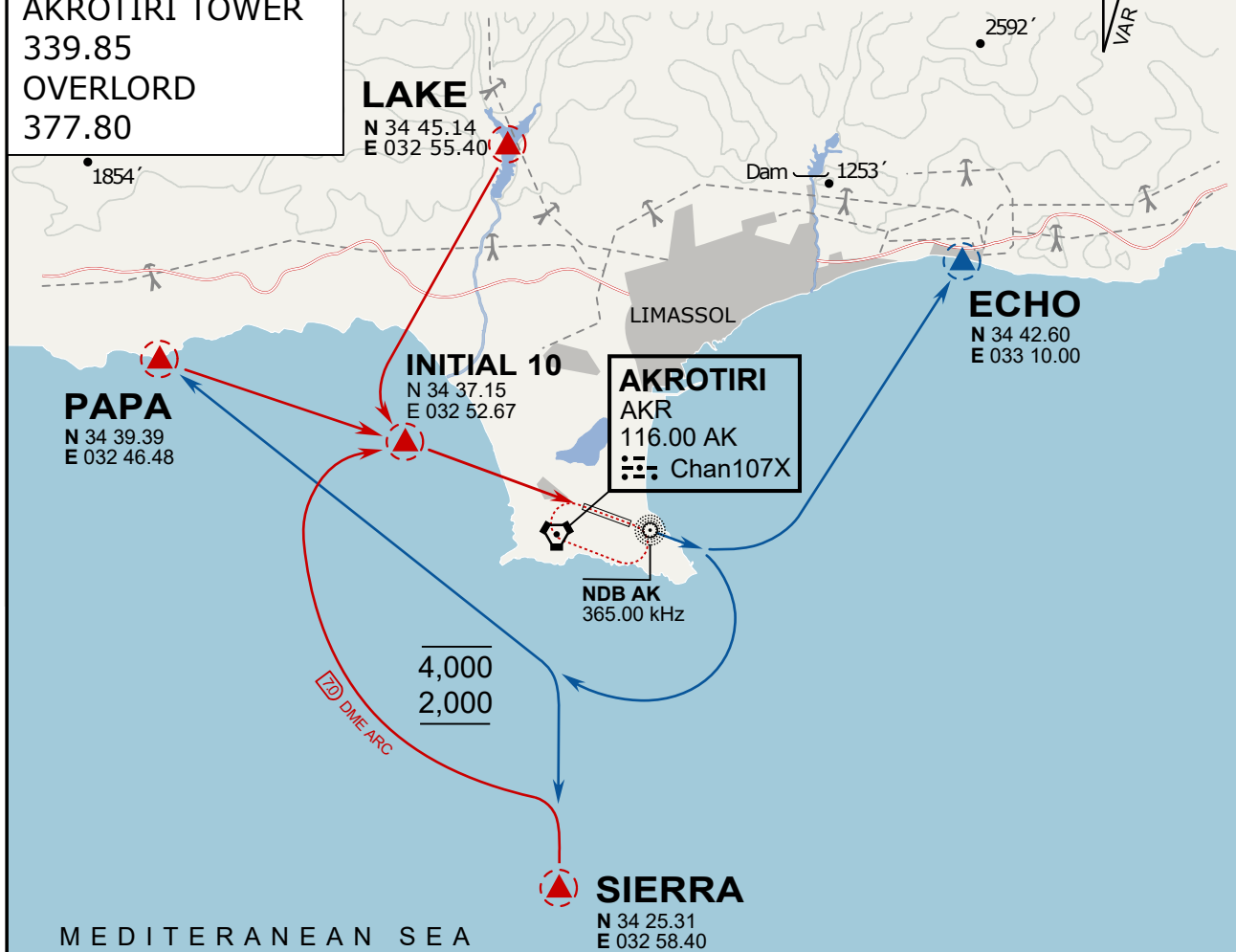
AKROTIRI TOWER

339.85

OVERLORD

377.80

NOT FOR CIVIL USE

CAUTION: If unable to comply
with restrictions advise ATC
prior to departure.

ARR / DEP ROUTE DESCRIPTION

ARRIVAL GENERAL

Pass Entry at 5.000' or below. Overhead Brake RWY 10: pass INITIAL 10 at 2.000' MSL.
Straight-in RWY 10 : pass INITIAL 1.500' or below.

ARR RWY10 PAPA / LAKE: Direct initial.

ARR RWY10 SIERRA: Intercept ARC 7 of AKR to INITIAL 10.

ARR ECHO: no ENTRY.

DEPARTURE GENERAL

Pass Departure end of runway at 1.000' AGL or below. Keep RWY heading until coastline.

DEP RWY10 ECHO: Direct EXIT.

DEP RWY10 SIERRA: Climbing right turn, intercept R180 AKR to Sierra.

DEP RWY10 PAPA: Climbing right turn until R180 AKR, then direct Papa

DEP LAKE: no EXIT.