

MISSION DATA CARD

OPORD		Callsign		Mission		Date/Time	
2858/2024		Nazgul 6		CAP		022000MAY24	
Task	ATO 801 30B35					Freq	
AO	Northern Israel & Jordan					262.45	
Departure				Recovery			
none				none			
#	Callsign	Pilot	IFF	TCN	LSR	NET	
-1	Nazgul 6-1	Striver/Uta	1161	29X	1661		
-2	Nazgul 6-2	Tank/TaB	1162	92X	1662		
-3	Nazgul 6-3	Repsus/Lempo	1163	92Y	1663		
-4	Nazgul 6-4	Razorback	1164	29Y	1664		

LOADOUT

A/A	6xA120C, 2xA9M			GUN	100% SAPHEI
A/G				CHF	120
POD	TGT, NAV			FLR	60
TKS	2xFT610			FUEL	100%

TOLD

	Takeoff	Target	Joker	Bingo	Land
FUEL	30518			4000	

AIRBASES

	Name	TCN	ATIS	GND	TWR	RWY	Elev	ILS
Dep	King Abulla II. AFB			121.9	118.0	31	2291	
Arr	King Abulla II. AFB			121.9	118.0	31	2291	
Div	Akrotiri AFB	107X	288.2	240.1	339.85	28	62	109.7

FLIGHTPLAN

#	Name	Navaid/Coords/DME	ALT	TOT
1	CAP HOTEL	N32 12 E035 59	35000	
2	CAP ALFA	N32 51 E034 58	35000	
3	B0	N32 19 60 E036 40 60		
4	B1	N32 43 60 E035 46		
5	B2	N33 24 E035 49		
6	B3	N33 06 E035 07 60		
7	B4	N33 48 E035 28 60		

COMMS

Radio	Usage
1	262.45
2	250.4 / 377.8 (16) / 250.4
3	377.9 KI AWACS (progr. auf CH15)

NOTES

=====TASKING=====

Nazgul 6: CAP

=====SEQUENCE=====

T/O Muwafucker AB

250.4 MHz Traffic

336.6 MHz Ground (nur wenn controlled)

TCN 85X

Recovery Muwafucker AB

250.4 MHz Traffic

336.6 MHz Ground (nur wenn controlled)

TCN 85X

MAX PWR T/O

Mil Power Climb 400KCAS and M.9

Second CAP HOTEL

hot 012° M A35 15nm LH Cruise

Standard Gameplan Romeo 1 / H2

Cruise to CAP ALFA with Buster

hot 054° M A35 15nm LH Cruise

=====OTHER FLIGHTS=====

=====AUTHENTICATION=====

via DRYAD (Buchstaben von AWACS sind Zeile und Buchstabe,
Antwort ist der darunter)

=====NAV GRID=====

N 32° 48.806' E 34° 59.182' (Haifa)

=====WEATHER=====

Time : 0800J

Clouds : FEW140

QNH 30.00

Temp: 27 °C

Wind : 33ft 053/6, 1600ft 053/14, 6600ft 056/16, 26000ft 075/16

wind dir correct

SUPPORT**Tanker**

Callsign	TCN	Freq	ALT	TAS
TEXACO 1	71Y	265.0	FL170	300
	Pos	TEXACO1: (N3657 E03434)		
ARCO 1	22Y	319.8	FL222	400
	Pos	ARCO1: (N3701 E03457)		
SHELL 3	93Y	278.75	FL170	215
	Pos	SHELL3: (N3436 E03419)		

AWACS

Callsign	Freq	ALT	Pos
OVERLORD2	377.8	FL320	N3713 E03643 - N3714 E03749

OTHER FLIGHTS

Callsign	Mission	Airframe	Freq	TCN	Grpld	Laser
Tiger 1	DEAD	3x F/A-18C	261.15	1/64	1	155X
AO	20B26	Task	ATO 802			
Tiger 3	CAP	4x F/A-18C	264.15	1/64		155X
AO	WEST OF DAMASCUS	Task	ATO801 B26/27			
Axe 1	Strike	3x A-10C	132.15	1/64	21	166X
AO	Depots Aita + Bent	Task	ATO 804 00B19			
Beast 2	Strike	3x A-10C	132.25	1/64	25	165X
AO	Depot Marja	Task	ATO 804 00B19			
Claw 3	AR	2x A-10C	132.35	1/64	30	163X
AO	KB Alpha	Task	ATO 805 00B17			
Fury 4	AR	2x A-10C	132.45	1/64	32	164X
AO	KB Bravo	Task	ATO 805 00B16			
Raptor 1	SEAD	4x F-16C	134.0	1/64		162X
AO	FLOT 25B30	Task	ATO 802			
Rattler 1	BAI	1x AH-64D	133.5	1/64		125X
AO	KB C	Task	BAI			

RADIO CHANNELS

#	Freq	Name
1		Flight/Squadron specific
2	288.2	Akrotiri ATIS
3	240.1	Akrotiri Ground
4	339.85	Aktrotiri Tower
5	335.05	Akrotiri Approach
6	360.1	Incirlik Tower
7	371.35	Incirlik Ground
8	377.475	Incirlik ATIS
9		No Preset
10	127.3	Paphos ATIS
11	353.8	Paphos Tower
12	304.0	CVN-73 George Washington
13	302.0	LHA-1 Tarawa
14	259.0	CV-59 Forrestal
15		No Preset
16	377.8	Overlord
17	265.0	KC-135 Texaco-1 medium/slow
18	319.8	KC-135 Arco-1
19	360.8	KC-135MPRS Arco-2
20	256.0	S-3B Recovery Tanker

RAMROD

0	1	2	3	4	5	6	7	8	9
I	M	P	O	R	T	U	N	E	D

KTC 1400 C

	0	1	2	3	4	5	6	7	8	9
A	ROHQ	CME	DAX	IW	GY	VNU	BT	FJ	LP	SK
B	MVRC	PBH	OUW	JA	DI	YKS	QT	NL	EG	XF
C	YQRJ	DAK	HUT	WG	LS	FCM	VX	ON	IP	EB
D	JWAN	GLS	OIH	FD	UR	TYC	EX	MQ	VP	BK
E	EADR	CXF	UVO	NH	PB	SGJ	WL	TQ	KM	IY
F	SAKW	CEI	BLV	JU	GO	HNM	FR	DQ	YP	XT
G	CUMB	EYS	JAQ	KW	IO	XPG	RH	FL	DN	VT
H	JUWS	TPV	OKE	XA	ND	QHR	CG	MF	LY	IB
I	SXFA	EUP	TKR	WM	JY	VID	GQ	LH	OC	BN
J	YROU	WBM	HAX	CS	KV	TJE	GF	QP	NL	DI
K	UNJA	OTD	KPR	HY	BS	LGM	IX	WE	CV	QF
L	HLQO	MAJ	WIE	GC	YN	FRK	PV	BD	TS	UX
M	FQSI	KJB	WVO	AY	XC	UME	DH	GL	TN	RP
N	LOUJ	GYX	REI	FA	WK	HNV	TC	DB	PQ	SM
O	CXBP	LVD	SEG	MH	AN	UTO	KJ	WI	FR	QY
P	BMYN	EPF	CWT	JG	SK	IHO	DQ	XU	AL	RV
Q	MOPB	IYH	AUF	KS	QW	LTD	JR	CE	NV	XG
R	HGUL	CNY	RVI	DF	TK	XBQ	PA	ES	WM	OJ
S	XWVT	OJD	HEQ	AP	LB	FRG	IY	SN	KC	MU
T	WYVK	PHI	GUD	FN	RO	SCJ	LT	QX	AE	BM
U	JXMP	SIR	VYE	NQ	FB	WOC	GD	UL	AT	HK
V	VDNE	UFG	SOC	YL	IB	AJR	KT	QH	XW	PM
W	VTJA	UNM	LQH	BG	FE	KID	RO	WS	PC	YX
X	HNDG	ORQ	YPI	WB	KJ	XLF	MU	VA	ES	TC
Y	HRYQ	SVU	PKF	CN	IO	GME	WA	XT	BD	JL

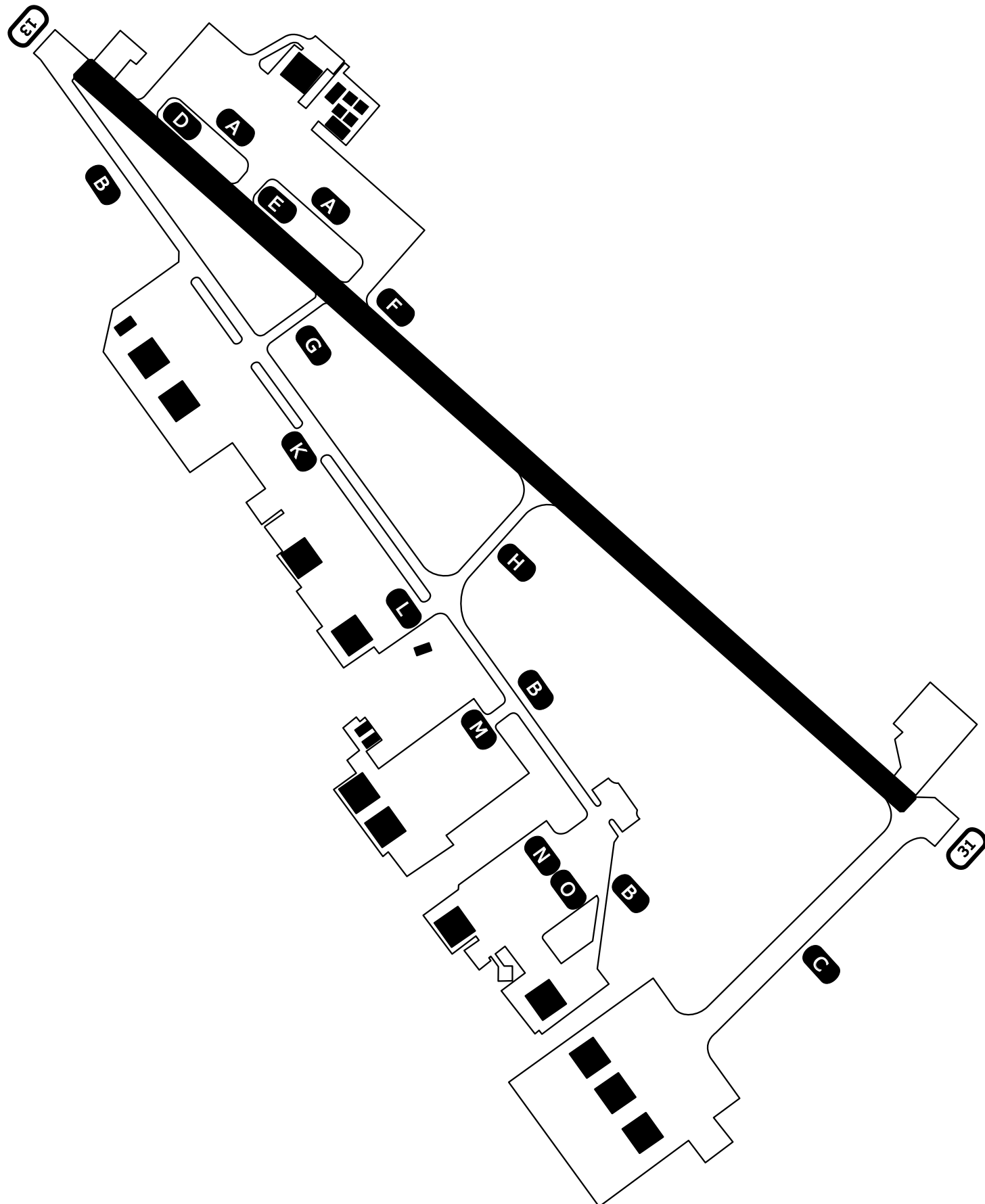
NAVAIDS

Id	Name	Channel	Position	Elevation
DAN	Incirlik	21	N37 00.950 E035 26.883	243
AKR	Akrotiri	107	N34 34.765 E032 57.769	147
PHA	Paphos	79	N34 42.997 E032 28.963	35
RMD	Ramat David	84	N32 39.892 E035 11.265	136
OS66	Kuweires Military Aviation Institute	36	N36 11.362 E037 34.226	1200

Ground Chart Airport Diagram

Amman, Jordan

King Abdulla II. AFB (OJKA)



"Sunshine Tower" : 118.0MHz
"Sunshine Ground" : 121.9MHz

RWY 13/31 : TORA+LDA 7000ft
Elev 2291

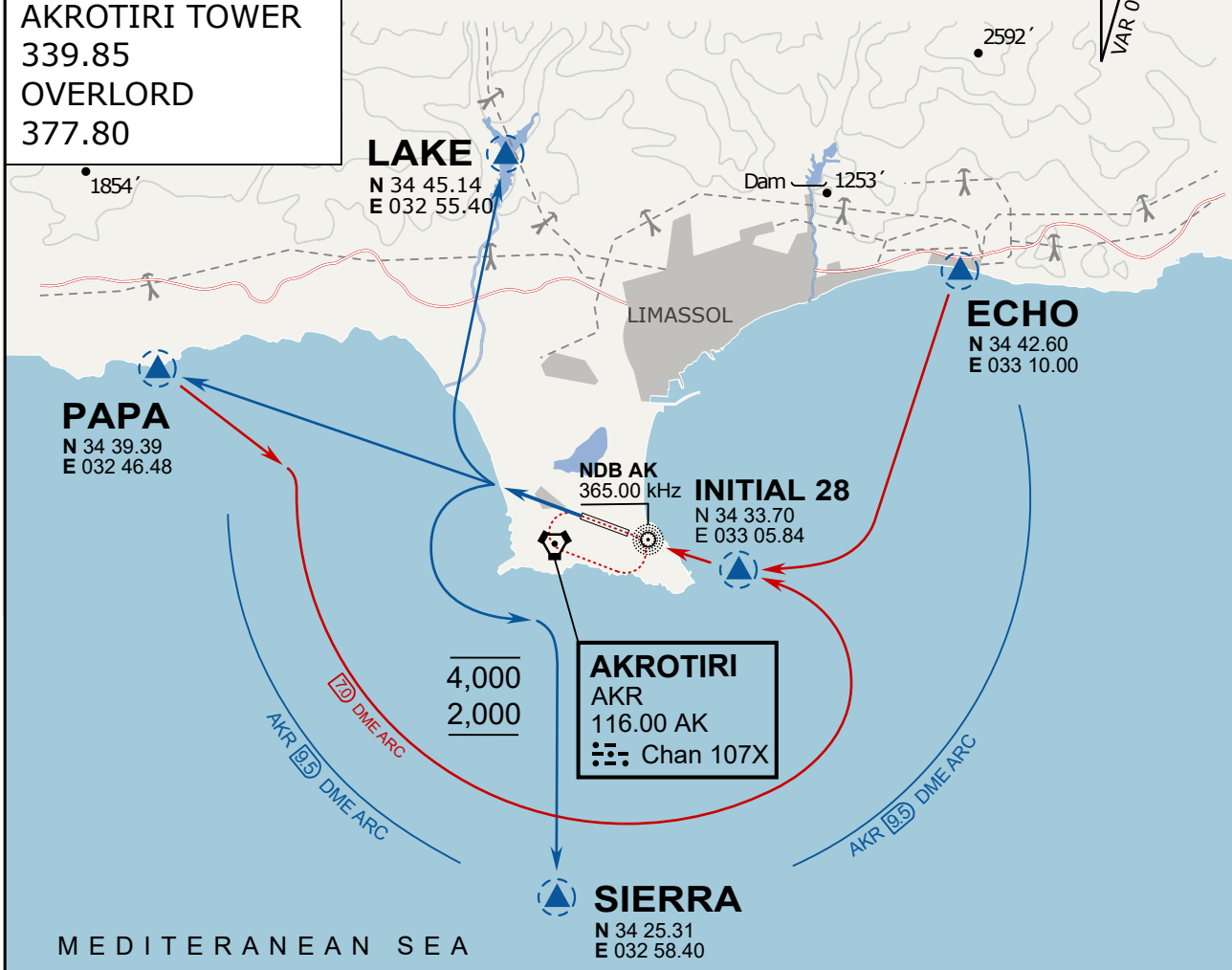
NOT AVAILABLE

NOT AVAILABLE

ATIS
 288.20
AKROTIRI GROUND
 240.10
AKROTIRI TOWER
 339.85
OVERLORD
 377.80

NOT FOR CIVIL USE

CAUTION: If unable to comply
 with restrictions advise ATC
 prior to departure.



ARR / DEP ROUTE DESCRIPTION

STRAIGHT-IN RWY28

Pass ENTRY at 5.000' MSL or below, pass INITIAL at 1.500' MSL or below.

OVERHEAD BREAK RWY28

Pass ENTRY at 5.000' MSL or below, pass INITIAL at 2.000' MSL, break to the south.

DEPARTURE GENERAL

Pass Departure end of runway at 1.000' or below.

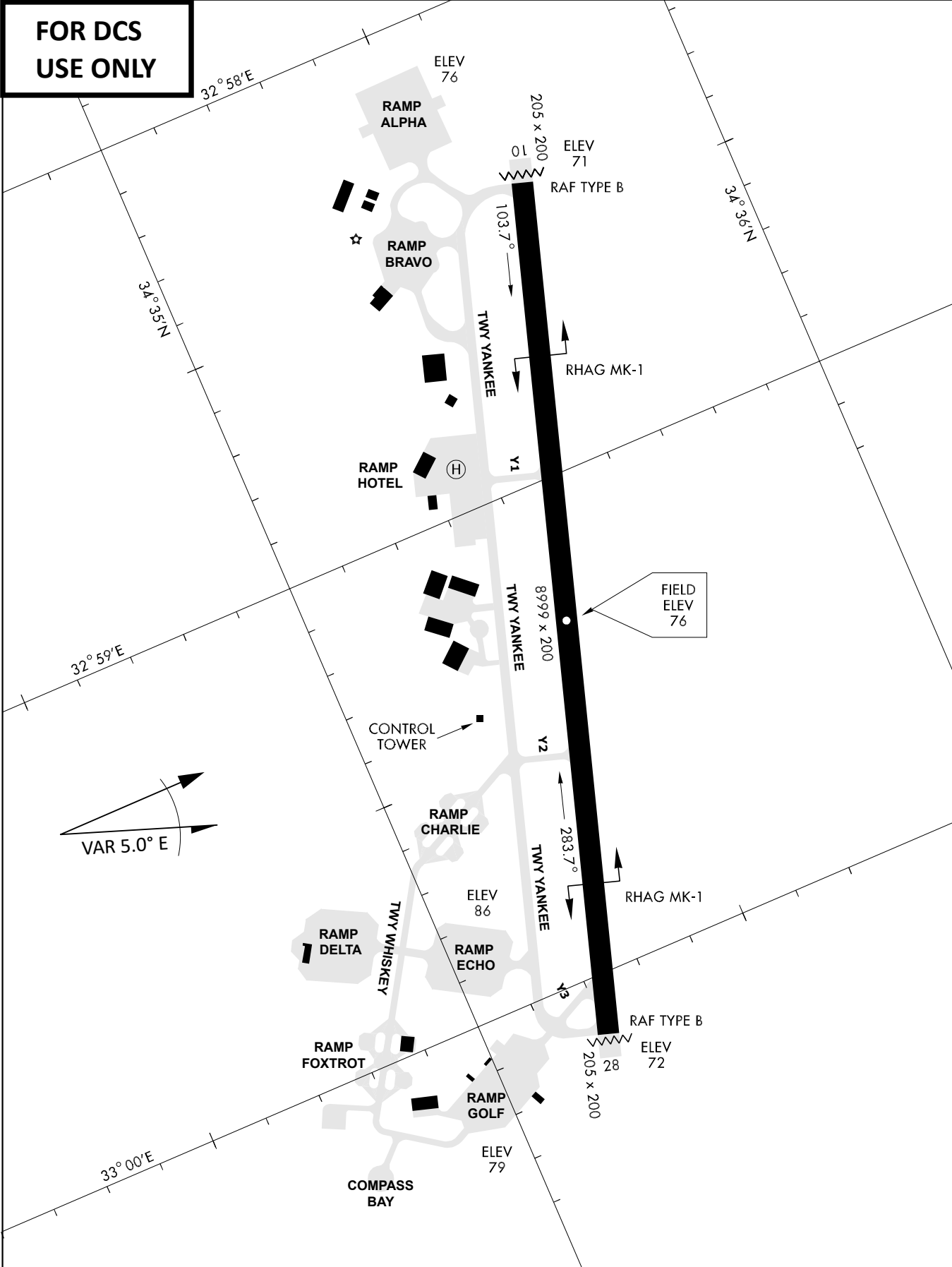
DEP RWY28 PAPA: Fly straight ahead to exit.

DEP RWY28 LAKE: Fly straight ahead until coast, than right turn direct exit.

DEP RWY28 SIERRA: Fly straight ahead until coastline, then climbing left turn, intercept AKR R-180 to exit.

DEP ECHO: no exit.

**FOR DCS
 USE ONLY**



ATIS	AKROTIRI GND	AKROTIRI TWR	OVERLORD CONTROL	TACAN	FIELD ELEVATION
288.20 MHz	240.10 122.10	339.85 130.075	377.8	AKR 107X	75 [ft] 23 [m]