

MISSION DATA CARD

OPORD		Callsign		Mission		Date/Time	
2857/2024		Beast 2		Strike		022000MAY24	
Task	ATO 804 00B19					Freq	
AO	Depot Marja					132.25	
Departure				Recovery			
none				none			
#	Callsign	Pilot		IFF	TCN	LSR	NET
-1	Beast 2-1	G-Rex		2121	1Y	1651	25/01
-2	Beast 2-2	Marsy		2122	64Y	1652	25/02
-3	Beast 2-3	Lenzi		2123	64X	1653	25/03

LOADOUT

A/A	2xA9M				GUN	100% CM
A/G	6xG38, 7M282L				CHF	240
POD	TGP, A184L				FLR	240
TKS					FUEL	100%

TOLD

	Takeoff	Target	Joker	Bingo	Land
FUEL	11087				

AIRBASES

	Name	TCN	ATIS	GND	TWR	RWY	Elev	ILS
Dep	King Abulla II. AFB			121.9	118.0	31	2291	
Arr	King Abulla II. AFB			121.9	118.0	31	2291	
Div	Ramat David AFB		118.4		118.6	27	125	

FLIGHTPLAN

#	Name	Navaid/Coords/DME	ALT	TOT
1	Nazareth	N32 42.218 E035 18.319	18000	
2	MarjaS1	N33 22.528 E035 36.732		
3	MarjaS2	N33 22.531 E035 36.747		
4	MarjaS3	N33 22.534 E035 36.762		
5	MarjaS4	N33 22.538 E035 36.778		
6	MarjaS5	N33 22.543 E035 36.798		
7	MarjaS6	N33 22.547 E035 36.814		
8	MarjaS7	N33 22.550 E035 36.830		
9	MarjaS8	N33 22.553 E035 36.845		
10	MarjaN1	N33 23.122 E035 37.687		
11	MarjaN2	N33 23.078 E035 37.687		
12	MarjaN3	N33 23.008 E035 37.698		
13	MarjaN4	N33 23.023 E035 37.598		

COMMS

Radio	Usage
1	132.25
2	121.9 - 118.0 - 16 - 118.0 - 121.9
3	32.00

NOTES

Targets: Depot Marja
Ingress and Egress via Nazareth

OTHER FLIGHTS

Callsign	Mission	Airframe	Freq	TCN	Grpld	Laser
Tiger 1	DEAD	3x F/A-18C	261.15	1/64	1	155X
AO	20B26	Task	ATO 802			
Tiger 3	CAP	4x F/A-18C	264.15	1/64		155X
AO	WEST OF DAMASCUS	Task	ATO801 B26/27			
Axe 1	Strike	3x A-10C	132.15	1/64	21	166X
AO	Depots Aita + Bent	Task	ATO 804 00B19			
Nazgul 6	CAP	4x F-15E	262.45	29/92		166X
AO	Northern Israel & Jordan	Task	ATO 801 30B35			
Claw 3	AR	2x A-10C	132.35	1/64	30	163X
AO	KB Alpha	Task	ATO 805 00B17			
Fury 4	AR	2x A-10C	132.45	1/64	32	164X
AO	KB Bravo	Task	ATO 805 00B16			
Raptor 1	SEAD	4x F-16C	134.0	1/64		162X
AO	FLOT 25B30	Task	ATO 802			
Rattler 1	BAI	1x AH-64D	133.5	1/64		125X
AO	KB C	Task	BAI			

RADIO CHANNELS

#	Freq	Name
1		Flight/Squadron specific
2	288.2	Akrotiri ATIS
3	240.1	Akrotiri Ground
4	339.85	Aktrotiri Tower
5	335.05	Akrotiri Approach
6	360.1	Incirlik Tower
7	371.35	Incirlik Ground
8	377.475	Incirlik ATIS
9		No Preset
10	127.3	Paphos ATIS
11	353.8	Paphos Tower
12	304.0	CVN-73 George Washington
13	302.0	LHA-1 Tarawa
14	259.0	CV-59 Forrestal
15		No Preset
16	377.8	Overlord
17	265.0	KC-135 Texaco-1 medium/slow
18	319.8	KC-135 Arco-1
19	360.8	KC-135MPRS Arco-2
20	256.0	S-3B Recovery Tanker

RAMROD

0	1	2	3	4	5	6	7	8	9
I	M	P	O	R	T	U	N	E	D

KTC 1400 C

	0	1	2	3	4	5	6	7	8	9
A	ROHQ	CME	DAX	IW	GY	VNU	BT	FJ	LP	SK
B	MVRC	PBH	OUW	JA	DI	YKS	QT	NL	EG	XF
C	YQRJ	DAK	HUT	WG	LS	FCM	VX	ON	IP	EB
D	JWAN	GLS	OIH	FD	UR	TYC	EX	MQ	VP	BK
E	EADR	CXF	UVO	NH	PB	SGJ	WL	TQ	KM	IY
F	SAKW	CEI	BLV	JU	GO	HNM	FR	DQ	YP	XT
G	CUMB	EYS	JAQ	KW	IO	XPG	RH	FL	DN	VT
H	JUWS	TPV	OKE	XA	ND	QHR	CG	MF	LY	IB
I	SXFA	EUP	TKR	WM	JY	VID	GQ	LH	OC	BN
J	YROU	WBM	HAX	CS	KV	TJE	GF	QP	NL	DI
K	UNJA	OTD	KPR	HY	BS	LGM	IX	WE	CV	QF
L	HLQO	MAJ	WIE	GC	YN	FRK	PV	BD	TS	UX
M	FQSI	KJB	WVO	AY	XC	UME	DH	GL	TN	RP
N	LOUJ	GYX	REI	FA	WK	HNV	TC	DB	PQ	SM
O	CXBP	LVD	SEG	MH	AN	UTO	KJ	WI	FR	QY
P	BMYN	EPF	CWT	JG	SK	IHO	DQ	XU	AL	RV
Q	MOPB	IYH	AUF	KS	QW	LTD	JR	CE	NV	XG
R	HGUL	CNY	RVI	DF	TK	XBQ	PA	ES	WM	OJ
S	XWVT	OJD	HEQ	AP	LB	FRG	IY	SN	KC	MU
T	WYVK	PHI	GUD	FN	RO	SCJ	LT	QX	AE	BM
U	JXMP	SIR	VYE	NQ	FB	WOC	GD	UL	AT	HK
V	VDNE	UFG	SOC	YL	IB	AJR	KT	QH	XW	PM
W	VTJA	UNM	LQH	BG	FE	KID	RO	WS	PC	YX
X	HNDG	ORQ	YPI	WB	KJ	XLF	MU	VA	ES	TC
Y	HRYQ	SVU	PKF	CN	IO	GME	WA	XT	BD	JL

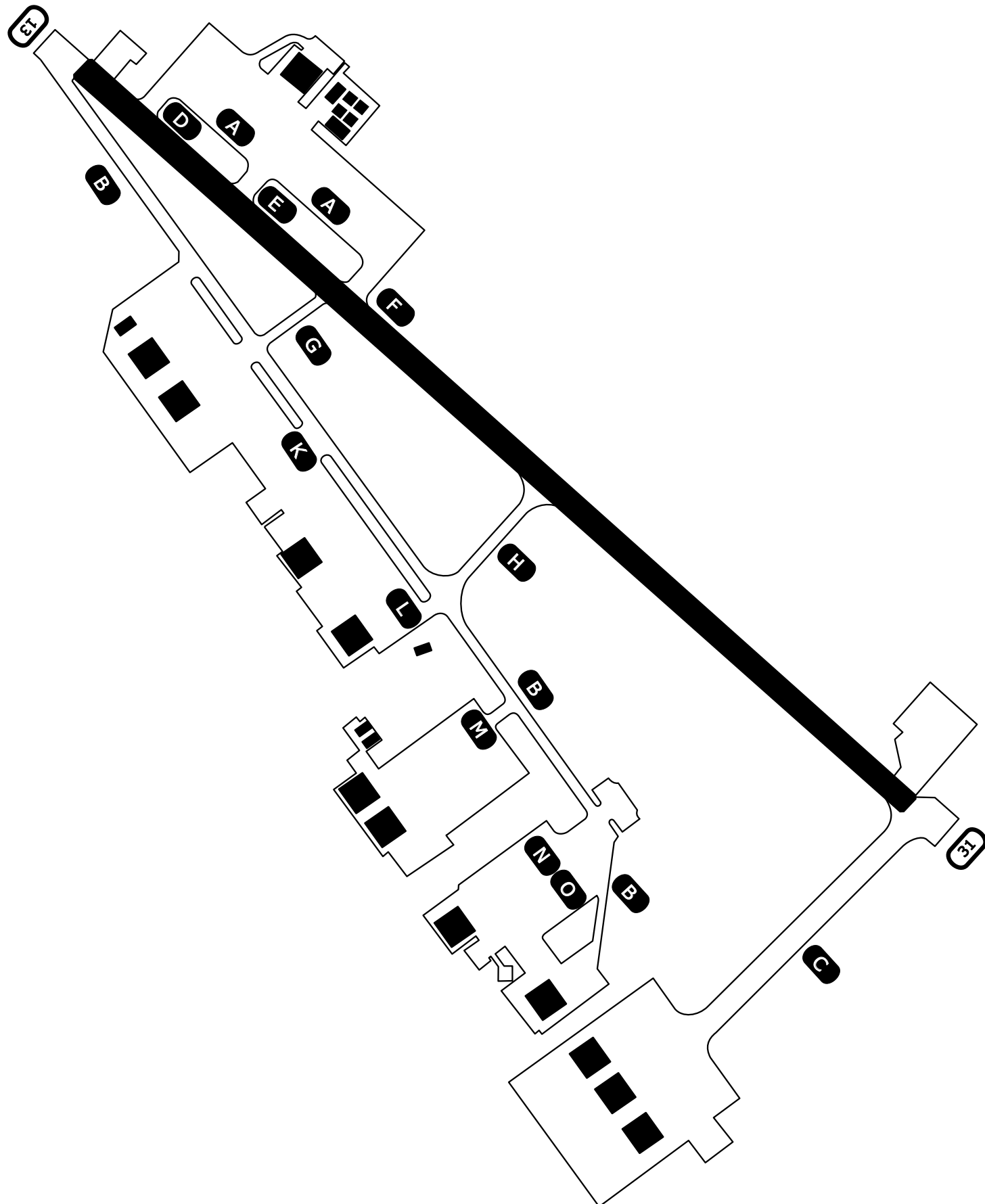
NAVAIDS

Id	Name	Channel	Position	Elevation
DAN	Incirlik	21	N37 00.950 E035 26.883	243
AKR	Akrotiri	107	N34 34.765 E032 57.769	147
PHA	Paphos	79	N34 42.997 E032 28.963	35
RMD	Ramat David	84	N32 39.892 E035 11.265	136
OS66	Kuweires Military Aviation Institute	36	N36 11.362 E037 34.226	1200

Ground Chart Airport Diagram

Amman, Jordan

King Abdulla II. AFB (OJKA)



"Sunshine Tower" : 118.0MHz
"Sunshine Ground" : 121.9MHz

RWY 13/31 : TORA+LDA 7000ft
Elev 2291

NOT AVAILABLE

NOT AVAILABLE

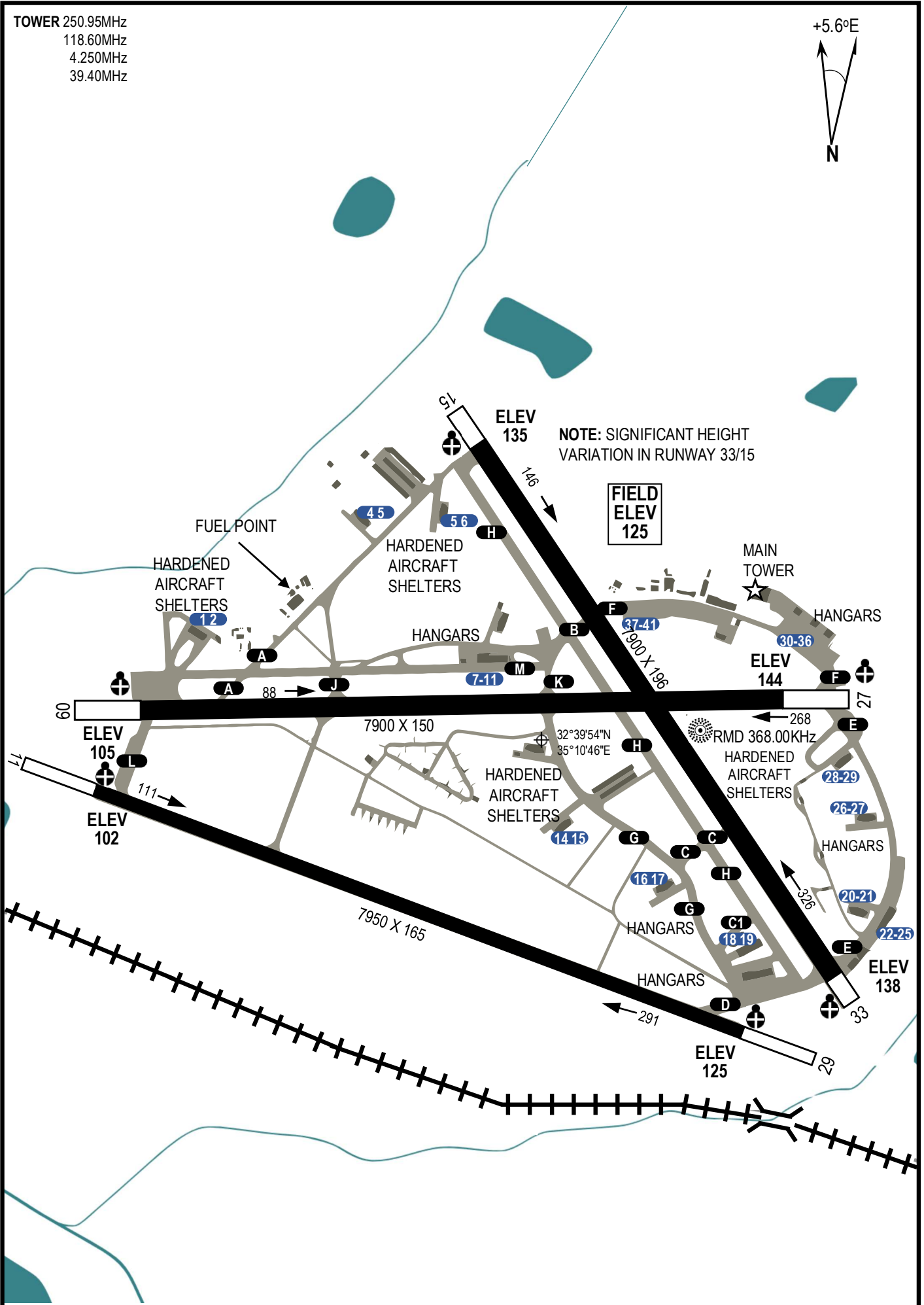
NOT AVAILABLE

TOWER 250.95MHz
118.60MHz
4.250MHz
39.40MHz



DCS SYRIA EFFECTIVE: 19 AUG 2020

DCS SYRIA EFFECTIVE: 19 AUG 2020



NOTE: SIGNIFICANT HEIGHT VARIATION IN RUNWAY 33/15

FIELD ELEV 125