

MISSION DATA CARD

OPORD		Callsign		Mission		Date/Time	
2853/2024		Tiger 3		CAP		022000MAY24	
Task	ATO801 B26/27						Freq
AO	WEST OF DAMASCUS						264.15
Departure				Recovery			
CAT				CASE I			
#	Callsign	Pilot	IFF	TCN	LSR	NET	
-1	Tiger 3-1	Poet	1031	1Y	1551		
-2	Tiger 3-2	Prinz	1032	64Y	1552		
-3	Tiger 3-3	Hawk	1033	64X	1553		

LOADOUT

A/A	2xA9X, 5xA120C			GUN	100% HEI-T
A/G				CHF	120
POD	TGP			FLR	0
TKS	3xFPU-8A			FUEL	100%

TOLD

	Takeoff	Target	Joker	Bingo	Land
FUEL	17535		8800	3800	

AIRBASES

	Name	TCN	ATIS	GND	TWR	RWY	Elev	ILS
Dep	CVN-73 USS G. Washington	55X		ICLS 12	304.0			
Arr	CVN-73 USS G. Washington	55X		ICLS 12	304.0			
Div	Akrotiri AFB	107X	288.2	240.1	339.85	28	62	109.7

FLIGHTPLAN

#	Name	Navaid/Coords/DME	ALT	TOT
1	VELOX	N33 49 01.146 E034 05 02.950	15000	
2	Orbit1	N33 46 18.679 E034 19 24.591	15000	
3	Orbit1	N33 40 09.310 E034 35 50.800	15000	
4	Bullseye	N32 48.700 E034 59.233	26000	

COMMS

Radio	Usage
1	12, 16, 12, 3,4
2	264.15
3	MIDS A23 / B44

SUPPORT**Tanker**

Callsign	TCN	Freq	ALT	TAS
ARCO 2	41Y	360.8	FL220	400
Pos	ARCO2: (N3653 E03452)			

OTHER FLIGHTS

Callsign	Mission	Airframe	Freq	TCN	Grpld	Laser
Tiger 1	DEAD	3x F/A-18C	261.15	1/64	1	155X
AO	20B26	Task	ATO 802			
Axe 1	Strike	3x A-10C	132.15	1/64	21	166X
AO	Depots Aita + Bent	Task	ATO 804 00B19			
Beast 2	Strike	3x A-10C	132.25	1/64	25	165X
AO	Depot Marja	Task	ATO 804 00B19			
Nazgul 6	CAP	4x F-15E	262.45	29/92		166X
AO	Northern Israel & Jordan	Task	ATO 801 30B35			
Claw 3	AR	2x A-10C	132.35	1/64	30	163X
AO	KB Alpha	Task	ATO 805 00B17			
Fury 4	AR	2x A-10C	132.45	1/64	32	164X
AO	KB Bravo	Task	ATO 805 00B16			
Raptor 1	SEAD	4x F-16C	134.0	1/64		162X
AO	FLOT 25B30	Task	ATO 802			
Rattler 1	BAI	1x AH-64D	133.5	1/64		125X
AO	KB C	Task	BAI			

RADIO CHANNELS

#	Freq	Name
1		Flight/Squadron specific
2	288.2	Akrotiri ATIS
3	240.1	Akrotiri Ground
4	339.85	Aktrotiri Tower
5	335.05	Akrotiri Approach
6	360.1	Incirlik Tower
7	371.35	Incirlik Ground
8	377.475	Incirlik ATIS
9		No Preset
10	127.3	Paphos ATIS
11	353.8	Paphos Tower
12	304.0	CVN-73 George Washington
13	302.0	LHA-1 Tarawa
14	259.0	CV-59 Forrestal
15		No Preset
16	377.8	Overlord
17	265.0	KC-135 Texaco-1 medium/slow
18	319.8	KC-135 Arco-1
19	360.8	KC-135MPRS Arco-2
20	256.0	S-3B Recovery Tanker

RAMROD

0	1	2	3	4	5	6	7	8	9
I	M	P	O	R	T	U	N	E	D

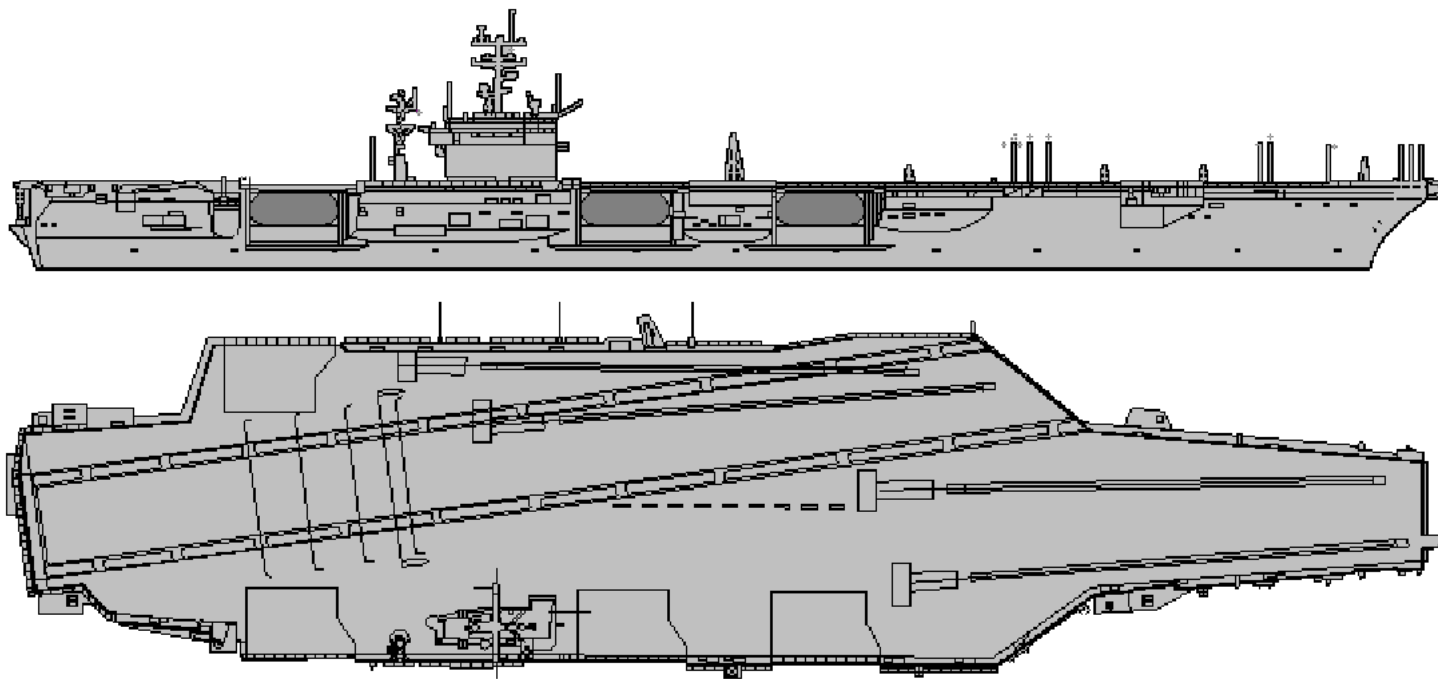
KTC 1400 C

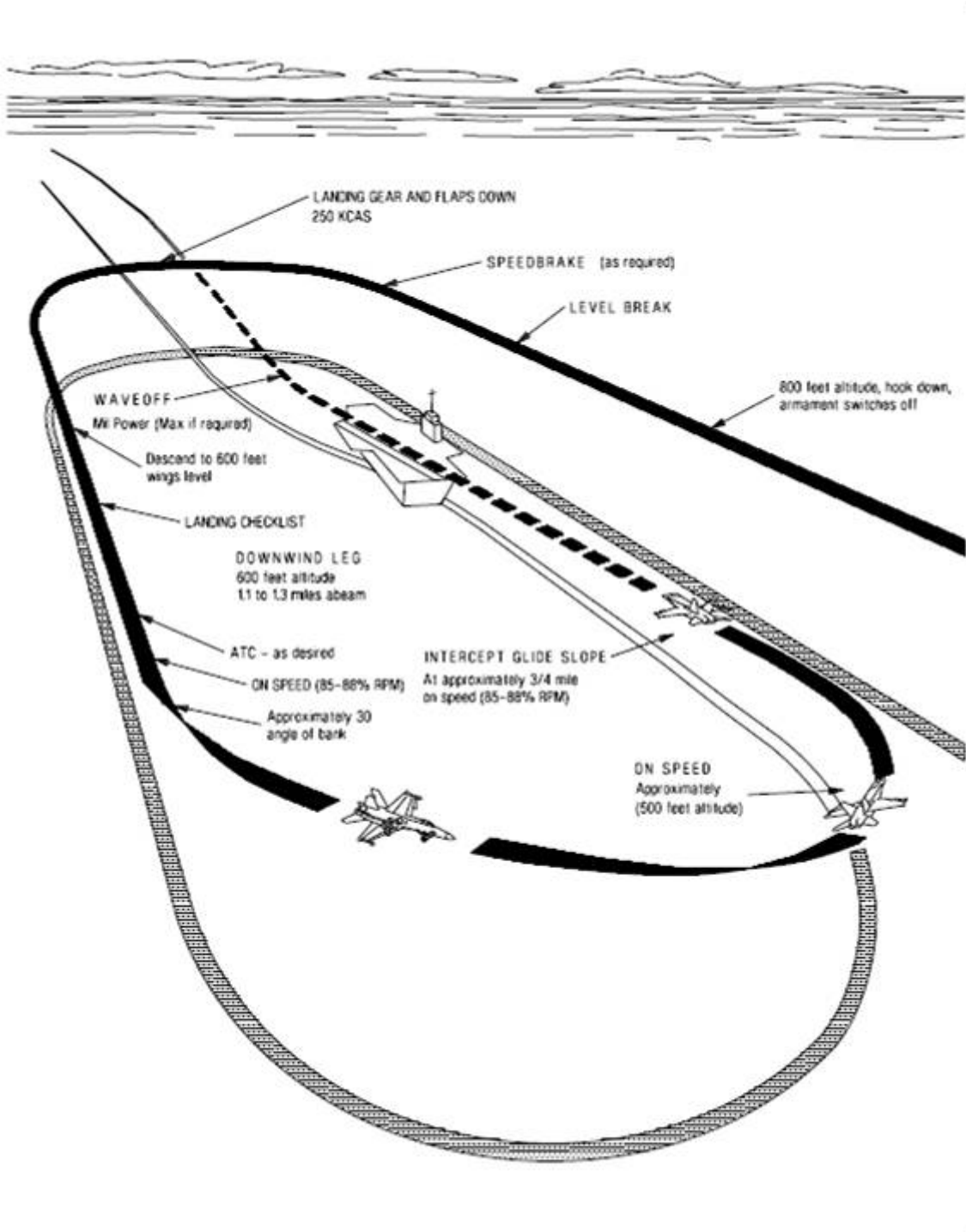
	0	1	2	3	4	5	6	7	8	9
A	ROHQ	CME	DAX	IW	GY	VNU	BT	FJ	LP	SK
B	MVRC	PBH	OUW	JA	DI	YKS	QT	NL	EG	XF
C	YQRJ	DAK	HUT	WG	LS	FCM	VX	ON	IP	EB
D	JWAN	GLS	OIH	FD	UR	TYC	EX	MQ	VP	BK
E	EADR	CXF	UVO	NH	PB	SGJ	WL	TQ	KM	IY
F	SAKW	CEI	BLV	JU	GO	HNM	FR	DQ	YP	XT
G	CUMB	EYS	JAQ	KW	IO	XPG	RH	FL	DN	VT
H	JUWS	TPV	OKE	XA	ND	QHR	CG	MF	LY	IB
I	SXFA	EUP	TKR	WM	JY	VID	GQ	LH	OC	BN
J	YROU	WBM	HAX	CS	KV	TJE	GF	QP	NL	DI
K	UNJA	OTD	KPR	HY	BS	LGM	IX	WE	CV	QF
L	HLQO	MAJ	WIE	GC	YN	FRK	PV	BD	TS	UX
M	FQSI	KJB	WVO	AY	XC	UME	DH	GL	TN	RP
N	LOUJ	GYX	REI	FA	WK	HNV	TC	DB	PQ	SM
O	CXBP	LVD	SEG	MH	AN	UTO	KJ	WI	FR	QY
P	BMYN	EPF	CWT	JG	SK	IHO	DQ	XU	AL	RV
Q	MOPB	IYH	AUF	KS	QW	LTD	JR	CE	NV	XG
R	HGUL	CNY	RVI	DF	TK	XBQ	PA	ES	WM	OJ
S	XWVT	OJD	HEQ	AP	LB	FRG	IY	SN	KC	MU
T	WYVK	PHI	GUD	FN	RO	SCJ	LT	QX	AE	BM
U	JXMP	SIR	VYE	NQ	FB	WOC	GD	UL	AT	HK
V	VDNE	UFG	SOC	YL	IB	AJR	KT	QH	XW	PM
W	VTJA	UNM	LQH	BG	FE	KID	RO	WS	PC	YX
X	HNDG	ORQ	YPI	WB	KJ	XLF	MU	VA	ES	TC
Y	HRYQ	SVU	PKF	CN	IO	GME	WA	XT	BD	JL

NAVAIDS

Id	Name	Channel	Position	Elevation
DAN	Incirlik	21	N37 00.950 E035 26.883	243
AKR	Akrotiri	107	N34 34.765 E032 57.769	147
PHA	Paphos	79	N34 42.997 E032 28.963	35
RMD	Ramat David	84	N32 39.892 E035 11.265	136
OS66	Kuweires Military Aviation Institute	36	N36 11.362 E037 34.226	1200



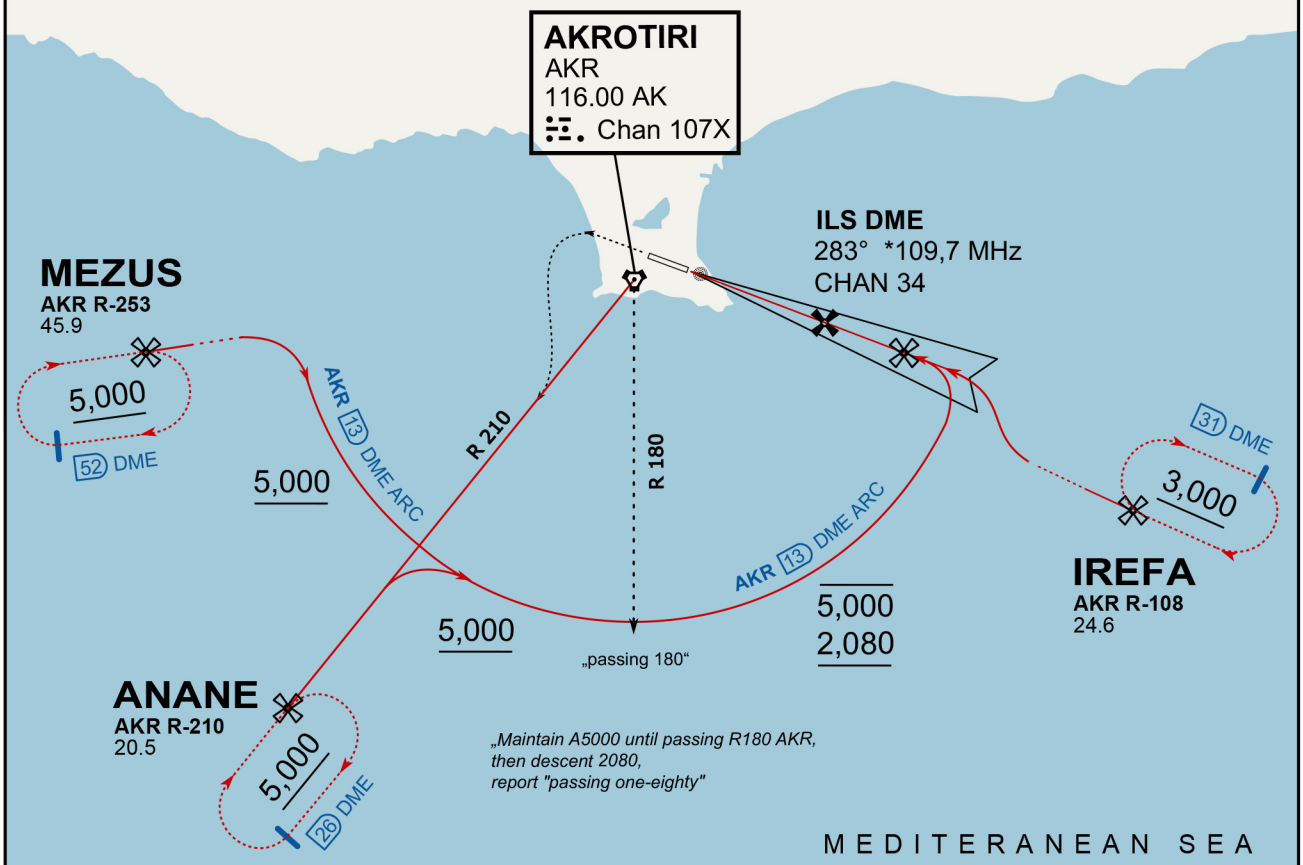




ATIS
288.200
AKROTIRI GROUND
122.100
AKROTIRI TOWER
339.850
APP (OVERLORD)
377.800

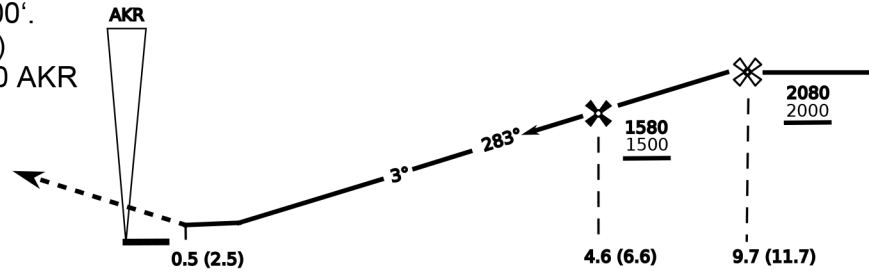
NOT FOR CIVIL USE

CAUTION: If unable to comply with restrictions advise ATC prior to departure.



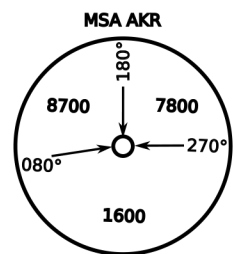
vJaBoG32 ETTR NAV CHART

On Track 283° climb A 4.000'.
passing 2.080' (2.000' AAL)
turn left and intercept R-210 AKR
to ANANE.
Enter ANANE Holding.

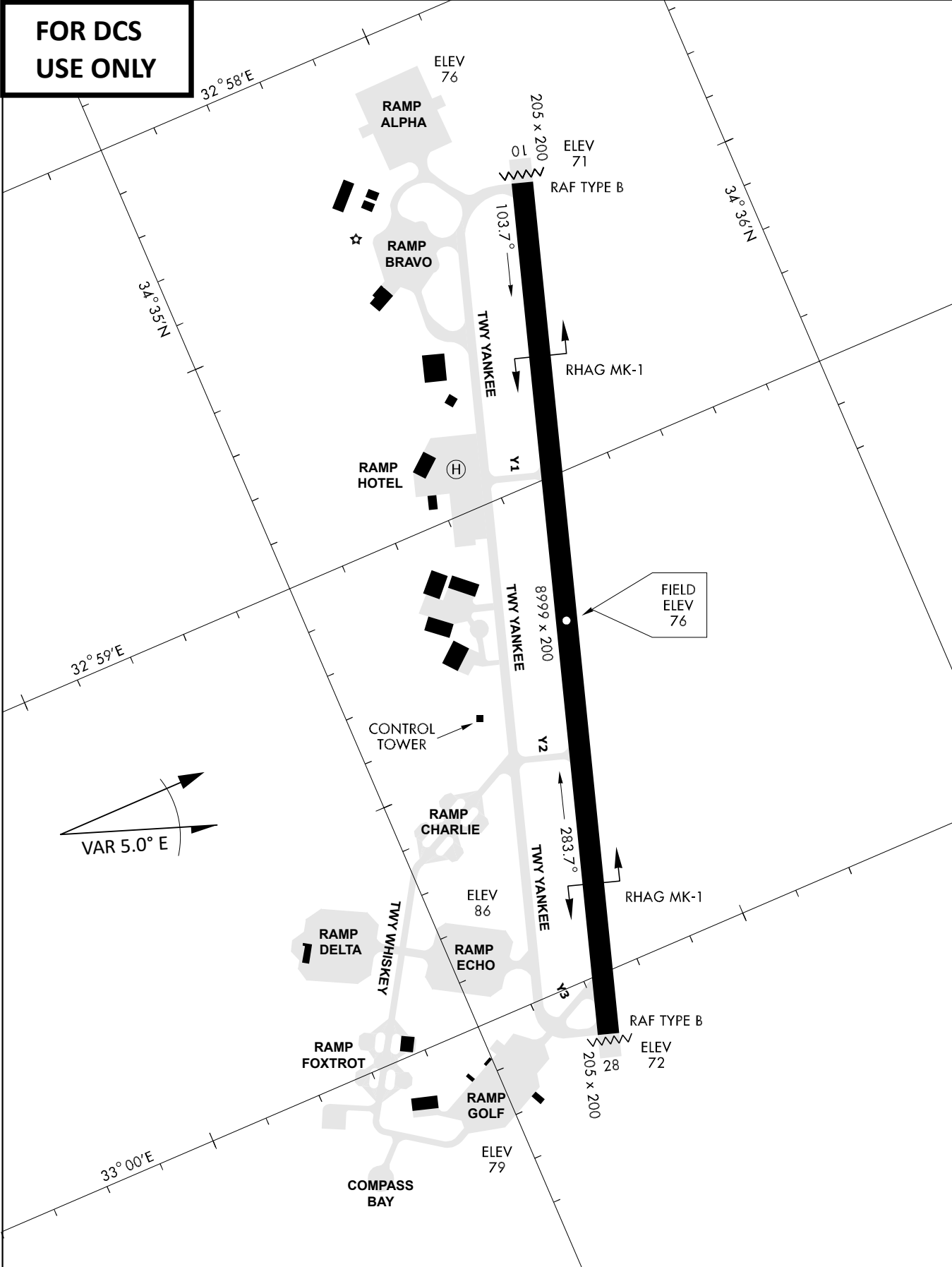


THR Elev 74ft DME I-AK (DME AKR)

CAT	ILS/DME	LOC/DME	CIRCLE	GS (kts)				
				80	120	150	180	210
A	280 (200)	390 (320) 800m	680 (610) 1500m	FAF - MAPt (4.1NM) 3:06 2:03 1:38 1:22 1:10				
B	800m		680 (610) 1600m	RoD (fpm) 420 640 800 950 1110				
C	290 (210) 800m		780 (710) 2400m	- CIRCLING PROHIBITED N of Rwy - no AUTO coupled ILS approaches - when established on ILS contact Tower - Timing not Auth to define MAPt				
D	310 (230) 800m		780 (710) 3600m					
E	340 (260) 800m		1380 (1310) 3600m					



**FOR DCS
 USE ONLY**



ATIS	AKROTIRI GND	AKROTIRI TWR	OVERLORD CONTROL	TACAN	FIELD ELEVATION
288.20 MHz	240.10 122.10	339.85 130.075	377.8	AKR 107X	75 [ft] 23 [m]