

**MISSION DATA CARD**

OPORD		Callsign		Mission		Date/Time	
2852/2024		Beast 1		Training		292030APR24	
Task						Freq	
AO						264.05	
Departure				Recovery			
VFR				VFR			
#	Callsign	Pilot		IFF	TCN	LSR	NET
-1	Beast 1-1	Toolface		2111	1Y	1701	25/01
-2	Beast 1-2	Stoner		2112	64Y	1702	25/02

**LOADOUT**

A/A	2xA9L				GUN	100% CM	
A/G	2xA65L, 7M282L				CHF	0	
POD	TGP, A184L				FLR	480	
TKS					FUEL	50%	

**TOLD**

	Takeoff	Target	Joker	Bingo	Land
FUEL	5543				

**AIRBASES**

	Name	TCN	ATIS	GND	TWR	RWY	Elev	ILS
Dep	Incirlik AFB	21X	377.47 5	371.35	360.1	5	190	
Arr	Incirlik AFB	21X	377.47 5	371.35	360.1	5	190	
Div	Akrotiri AFB	107X	288.2	240.1	339.85	28	62	109.7

**FLIGHTPLAN**

#	Name	Navaid/Coords/DME	ALT	TOT
1	INITIAL 23	N37 03.956 E035 31.866		
2	FALCON	N37 05.067 E035 40.888		
3	INITIAL 05	N36 56.654 E035 19.839		
4	EAGLE	N36 52.938 E035 21.611		

**COMMS**

Radio	Usage
1	132.15
2	8-7-6-16-8-6-7
3	32,00

## OTHER FLIGHTS

Callsign	Mission	Airframe	Freq	TCN	Grpld	Laser
Outlaw 5	Training	4x AH-64D	133.5	1/64		171X
AO	Akamas Bombing Range	Task	Bop-Up Attack			
Tiger 1	Training	2x F/A-18C	261.15	1/64	1	155X
AO		Task	DEAD Training SA2/SAx Range			
Python* 1	Training	1x AV-8B N/A	264.55	1/64		168X
AO		Task				
Tiger 2	Training	2x F/A-18C	261.25	1/64	2	156X
AO		Task	DEAD Training SA2/SAx Range			
Nazgul 6	Training	4x F-15E	262.45	1/64		156X
AO		Task				
Edelweiss 1	Training	1x F/A-18C	264.15	1/64		171X
AO		Task				
Monster 1	Training	2x A-10C	132.15	1/64	21	161X
AO	Mission Area North	Task				
T-Rex 2	Training	2x A-10C	132.25	1/64	25	165X
AO	Mission Area North	Task	Coin Mission			

**RADIO CHANNELS**

#	Freq	Name
1		Flight/Squadron specific
2	288.2	Akrotiri ATIS
3	240.1	Akrotiri Ground
4	339.85	Aktrotiri Tower
5	335.05	Akrotiri Approach
6	360.1	Incirlik Tower
7	371.35	Incirlik Ground
8	377.475	Incirlik ATIS
9		No Preset
10	127.3	Paphos ATIS
11	353.8	Paphos Tower
12	304.0	CVN-73 George Washington
13	302.0	LHA-1 Tarawa
14	259.0	CV-59 Forrestal
15		No Preset
16	377.8	Overlord
17	265.0	KC-135 Texaco-1 medium/slow
18	319.8	KC-135 Arco-1
19	360.8	KC-135MPRS Arco-2
20	256.0	S-3B Recovery Tanker

**RAMROD**

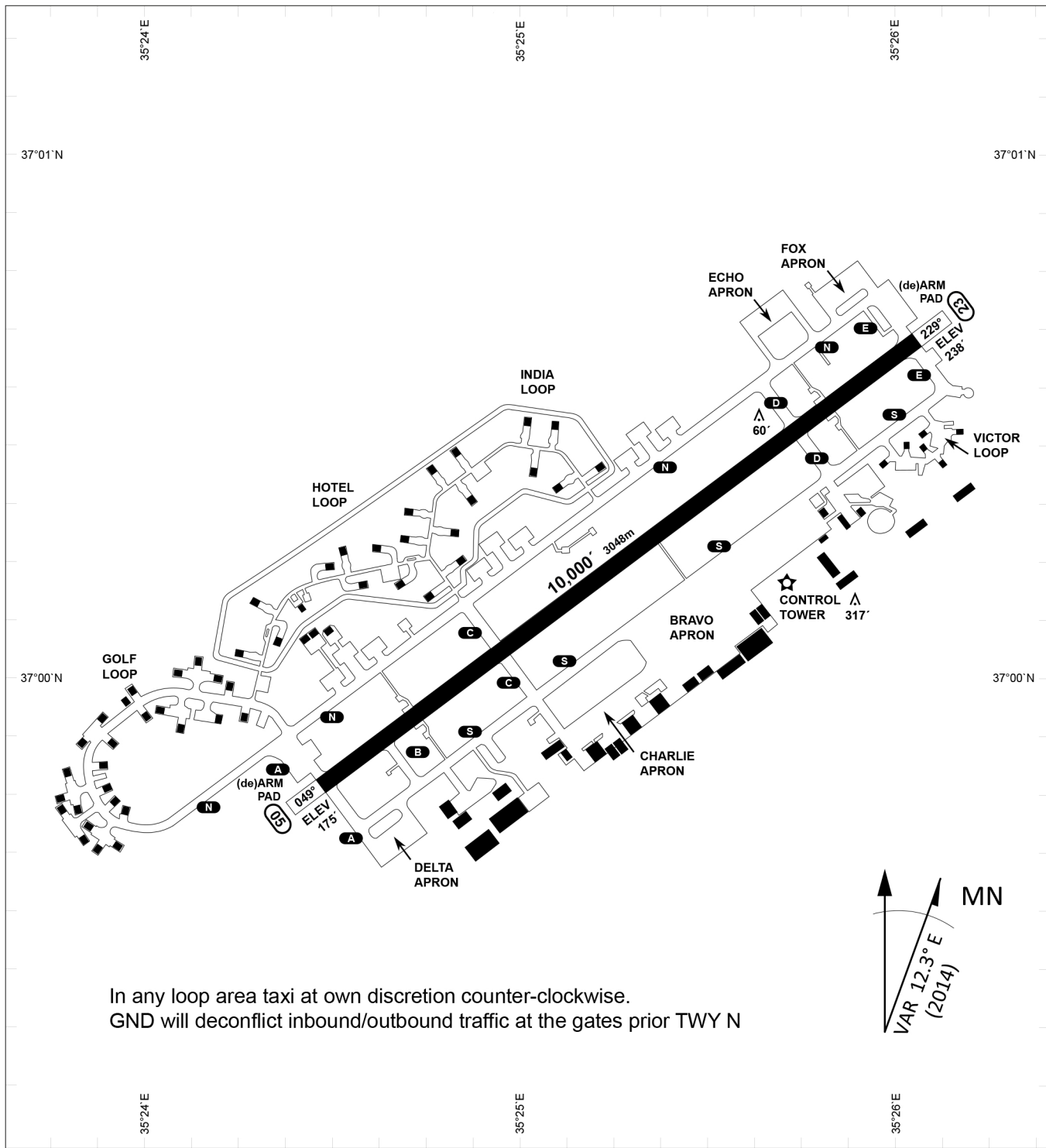
0	1	2	3	4	5	6	7	8	9
L	A	C	H	R	Y	M	O	S	E

**KTC 1400 C**

	0	1	2	3	4	5	6	7	8	9
A	EMLD	WUB	IOV	RJ	PN	CAQ	YS	GK	FT	HX
B	AXYV	QKF	MNU	GL	PW	OEH	JC	RT	BI	DS
C	WNAP	HCR	GYK	SO	UT	IFE	JM	BQ	VX	DL
D	HKRI	JXF	CDN	MB	LQ	WAO	TP	YU	GV	SE
E	CVXP	FEW	IDL	BN	TG	AKY	JS	MR	OU	QH
F	KYIB	LVQ	TRU	FX	JG	HOP	NA	MW	CS	DE
G	WVQE	NOM	TUP	GH	LC	IDA	XF	YB	RJ	SK
H	FQJC	HOM	USR	TD	BP	KIV	XA	EG	NW	YL
I	JVOF	DBR	HMS	XL	QI	TCW	EU	AY	PK	NG
J	CDXU	ETA	VSM	BO	HW	PYQ	RK	FL	IJ	GN
K	ILCJ	HBO	GAK	FW	NX	EDQ	YP	TS	UM	RV
L	MRPD	SUV	FOL	HQ	NA	CEI	JB	WT	YX	KG
M	WXQO	EYJ	IGC	AN	PB	HKS	UM	TL	FD	VR
N	EVPM	KHA	IDO	JN	LT	QBS	FY	WG	RC	UX
O	INLH	FEB	VWM	UQ	PT	KJX	RC	DO	YG	SA
P	YXOJ	UAE	LWC	QR	IV	PND	MG	KH	TB	FS
Q	XDHJ	TYG	NLP	CB	EK	QFS	RO	UV	MA	IW
R	YEAL	VBD	XUI	OR	PF	WKJ	GQ	CM	HT	SN
S	XRYN	VET	OLQ	MP	AU	HBG	KJ	CF	ID	SW
T	KCMP	ABF	JIG	WL	OT	UXV	HQ	ER	DN	SY
U	XMSF	TLU	ANB	IQ	PY	JRO	ED	GH	KV	WC
V	PNLH	ITE	CAX	YW	GU	FJQ	OD	RK	MB	SV
W	PJAR	MOY	WNK	XL	CH	FUV	SI	QD	GT	EB
X	TGSK	AXB	MWC	DN	VY	FRP	JO	IU	QL	HE
Y	QSLK	DEG	OVA	UC	BW	MHJ	FR	TX	PI	YN

**NAVAIDS**

<b>Id</b>	<b>Name</b>	<b>Channel</b>	<b>Position</b>	<b>Elevation</b>
DAN	Incirlik	21	N37 00.950 E035 26.883	243
AKR	Akrotiri	107	N34 34.765 E032 57.769	147
PHA	Paphos	79	N34 42.997 E032 28.963	35
RMD	Ramat David	84	N32 39.892 E035 11.265	136
OS66	Kuweires Military Aviation Institute	36	N36 11.362 E037 34.226	1200



In any loop area taxi at own discretion counter-clockwise.  
 GND will deconflict inbound/outbound traffic at the gates prior TWY N

PAR	RWY	CAT	MINIMA	ARP	ELEV	Scale 1:35'500
	21L	A B D E	2057 - 0.8 200 (200-0.8/1.6) GS 3°	37°0'56.000" N 35°26'53.000" E	1857 [ft]	0 300 600 900 1200 1500 [m] 0 1000 2000 3000 4000 5000 [ft]
	3R	A B D E	2057 - 0.8 200 (200-0.8/1.6) GS 3°		566 [m]	
SRA	21R	A C D E	2257 - 1.2 350 (350-1.2/1.6)			
	3L	A C D E	2257 - 1.2 350 (350-1.2/1.6)			

RWY	TORA	TORA from D	TORA from B	COURSE	PSN THR	ALS
23	10,000 [ft] 3048 [m]	8,000 [ft] 2438 [m]		235°	37°00.611'N 035°26.368'E	⊙
05	10,000 [ft] 3048 [m]		9,000 [ft] 2743 [m]	055°	36°59.043'N 035°24.760'E	⊙

ATIS	INCIRLIK GROUND	INCIRLIK TOWER	CONTROL	TACAN	ILS RWY 05	ILS RWY 23
377.475	371.350   123.020	360.100   121.100	337.800	DAN21x	109.3MHz	111.7MHz

ATIS  
377.475 (#8)

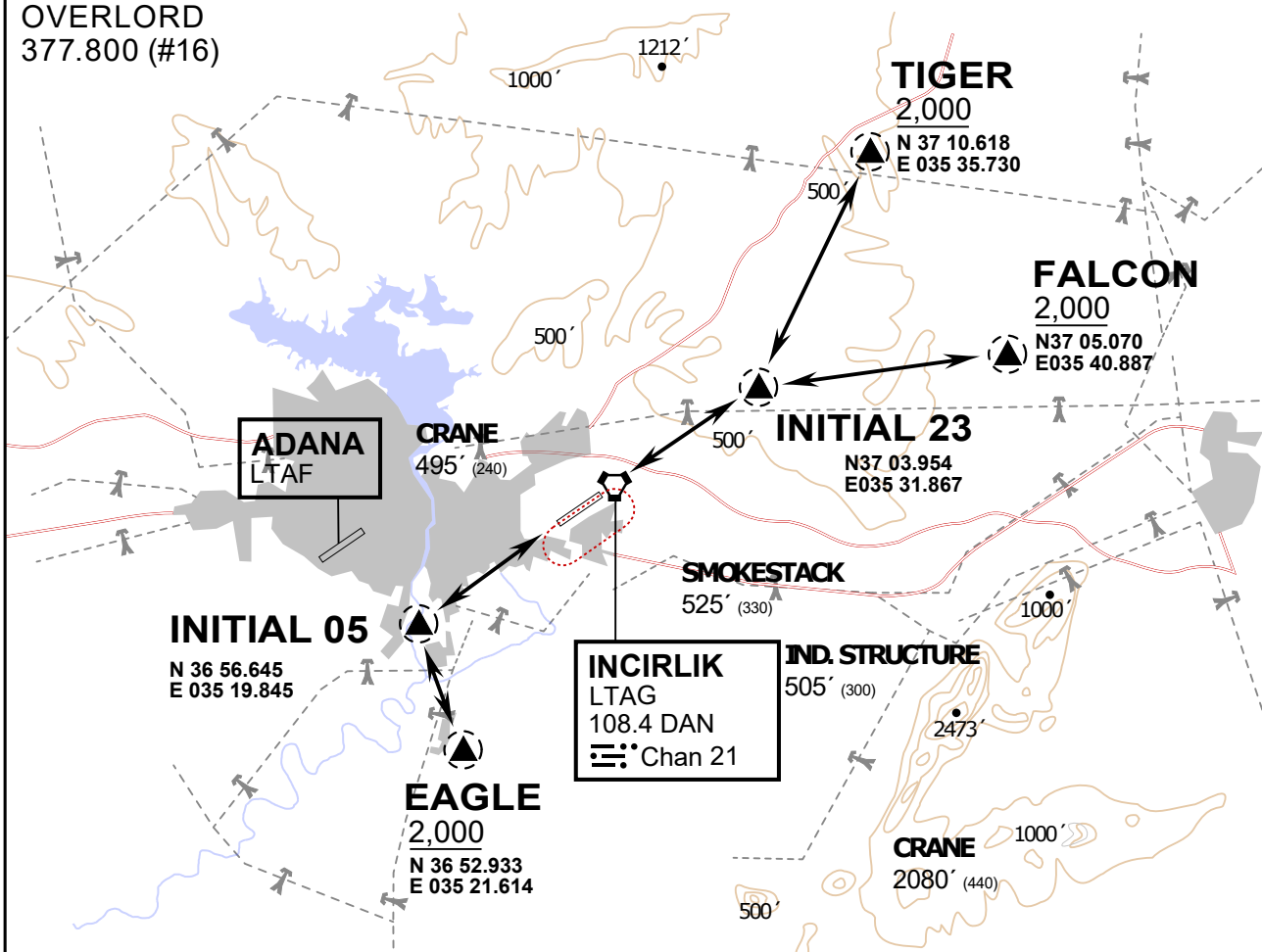
INCIRLIK GROUND  
371.3500 (#7)

INCIRLIK TOWER  
360.100 (#6)

OVERLORD  
377.800 (#16)

**NOT FOR CIVIL USE**

CAUTION: If unable to comply with restrictions advise ATC prior to departure.



vJaBoG32 ETRR NAV CHART

### ARR / DEP ROUTE DESCRIPTION

#### STRAIGHT-IN RWY 05 / 23

Pass entry EAGLE / TIGER / FALCON at 2000' and INITIAL at 1500'

#### OVERHEAD BREAK RWY 05 / 23

Pass entry EAGLE / TIGER / FALCON at 2500', pass INITIAL at 2000' break to the south at 2000' pattern altitude.

#### HELICOPTER ROUTES

Pass entry EAGLE / TIGER / FALCON at 1000' or below, pass INITIAL at 1000' break to the south at 1000' pattern altitude.

#### DEPARTURE ALL DIRECTIONS

pass DER below 1500ft



ATIS  
377.475 (#8)

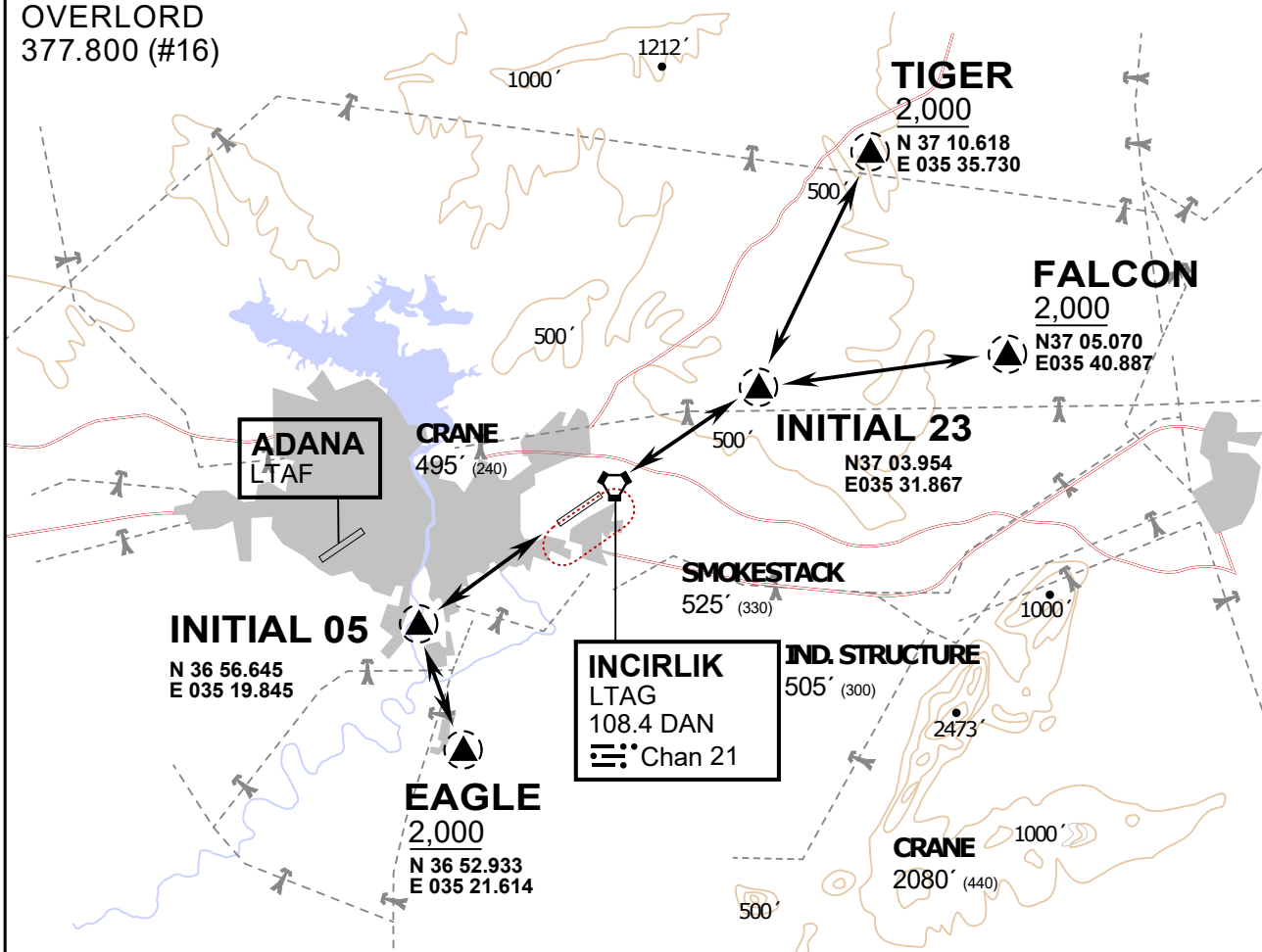
INCIRLIK GROUND  
371.3500 (#7)

INCIRLIK TOWER  
360.100 (#6)

OVERLORD  
377.800 (#16)

NOT FOR CIVIL USE

CAUTION: If unable to comply with restrictions advise ATC prior to departure.



vJaBoG32 ETTR NAV CHART

**ARR / DEP ROUTE DESCRIPTION**

STRAIGHT-IN RWY 05 / 23

Pass entry EAGLE / TIGER / FALCON at 2000' and INITIAL at 1500'

OVERHEAD BREAK RWY 05 / 23

Pass entry EAGLE / TIGER / FALCON at 2500', pass INITIAL at 2000' break to the south at 2000' pattern altitude.

HELICOPTER ROUTES

Pass entry EAGLE / TIGER / FALCON at 1000' or below, pass INITIAL at 1000' break to the south at 1000' pattern altitude.

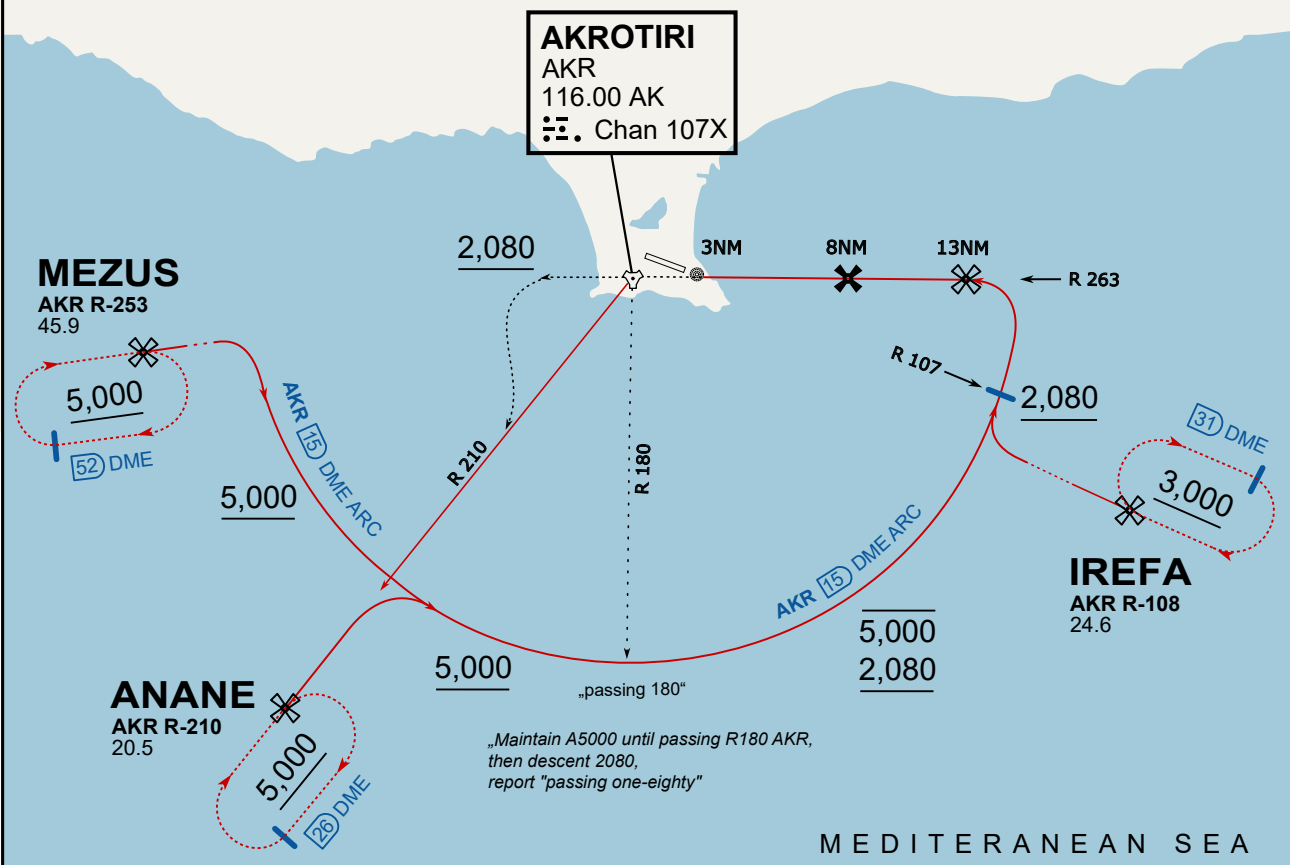
DEPARTURE ALL DIRECTIONS

pass DER below 1500ft

**ATIS**  
 288.200  
**AKROTIRI GROUND**  
 122.100  
**AKROTIRI TOWER**  
 339.850  
**APP (OVERLORD)**  
 377.800

## NOT FOR CIVIL USE

CAUTION: If unable to comply with restrictions advise ATC prior to departure.



„Maintain A5000 until passing R180 AKR, then descent 2080, report "passing one-eighty"“

MEDITERANEAN SEA

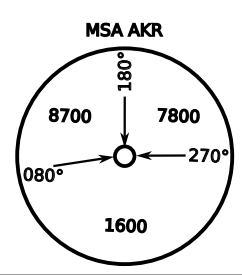
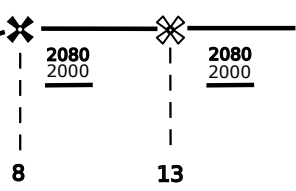
On Track 263° climb A 4.000'. passing 2.080' (2.000' AAL) turn left and intercept R-210 AKR to ANANE. Enter ANANE Holding.



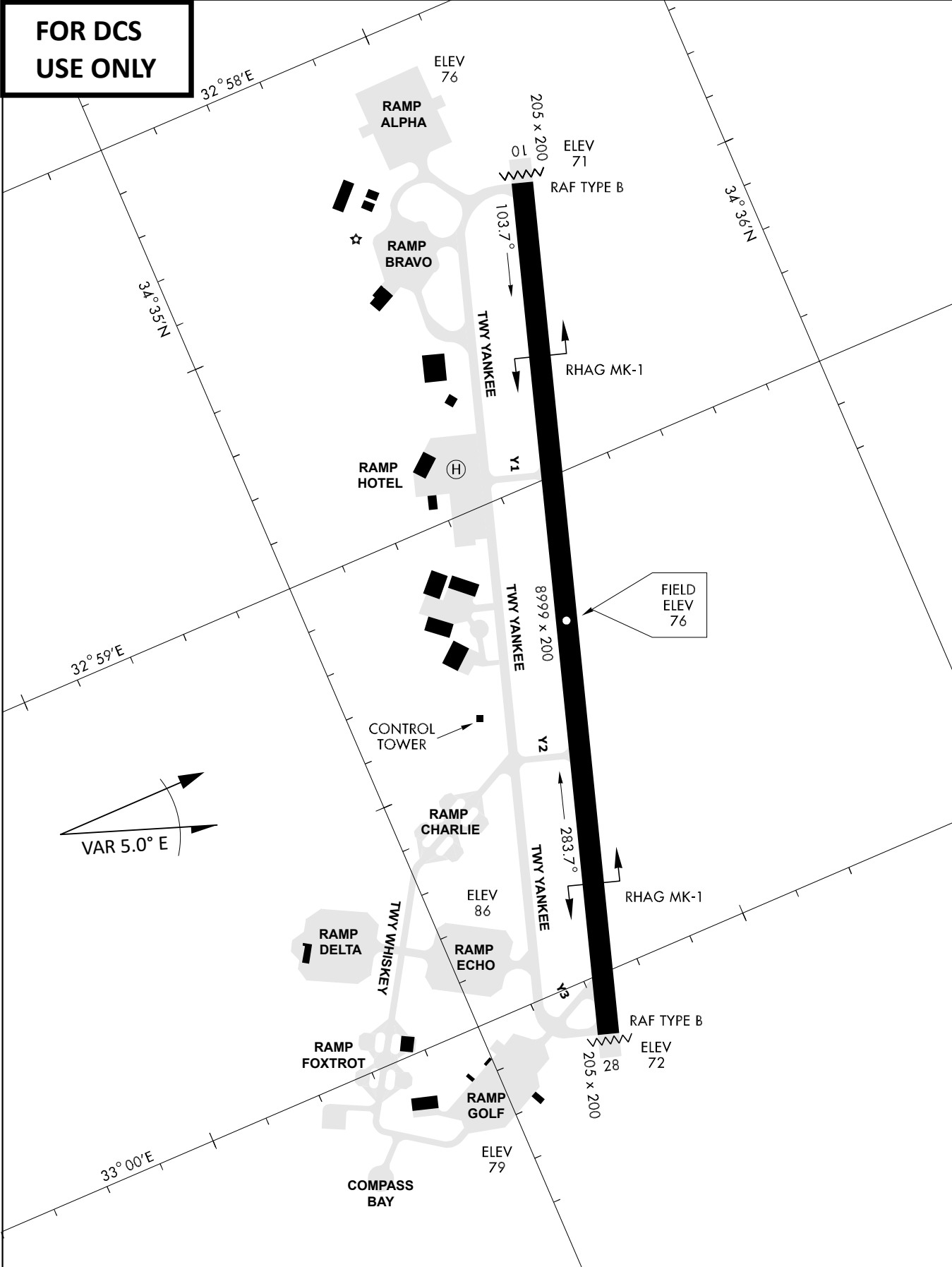
DME AKR	7	6	5	4
ALT	1780	1460	1140	820

THR Elev 74ft DME AKR

CAT	TAC	CIRCLE	GS (kts)	80	120	150	180	210
A	500(430)	680 (610) 2000m	FAF - MAPt (4.1NM)	3:06	2:03	1:38	1:22	1:10
B	1300m		RoD (fpm)	420	640	800	950	1110
C	780 (710)	780 (710) 3300m	- CIRCLING PROHIBITED N of Rwy - final track is offset 20° right of RCL and Intcp 1.1NM before THR - when established on final contact tower - Timing not Auth to define MAPt					
D	2600m	780 (710) 3600m						
E	1380 (1310) 5000m	1380 (1310) 5000m						



**FOR DCS  
 USE ONLY**



ATIS	AKROTIRI GND	AKROTIRI TWR	OVERLORD CONTROL	TACAN	FIELD ELEVATION
288.20 MHz	240.10   122.10	339.85   130.075	377.8	AKR 107X	<b>75 [ft] 23 [m]</b>