

**MISSION DATA CARD**

OPORD		Callsign		Mission		Date/Time	
2844/2024		Tiger 1		DEAD		022000MAY24	
Task	ATO 802					Freq	
AO	20B26					261.15	
Departure				Recovery			
CAT				CASE I			
#	Callsign	Pilot		IFF	TCN	LSR	NET
-1	Tiger 1-1	Ghost		1011	1Y	1551	01/01
-2	Tiger 1-2	Kosmoss		1012	64Y	1552	01/02
-3	Tiger 1-3	Jemi		1013	64X	1553	01/03

**LOADOUT**

A/A	2xA9X, A120C				GUN	100% HEI-T
A/G	4xG38, 3x ADM-141A - BRU-42				CHF	90
POD	TGP				FLR	30
TKS	2xFPU-8A				FUEL	100%

**TOLD**

	Takeoff	Target	Joker	Bingo	Land
FUEL	15291			4000	2000

**AIRBASES**

	Name	TCN	ATIS	GND	TWR	RWY	Elev	ILS
Dep	CVN-73 USS G. Washington	55X		ICLS 12	304.0			
Arr	CVN-73 USS G. Washington	55X		ICLS 12	304.0			
Div	Akrotiri AFB	107X	288.2	240.1	339.85	28	62	109.7

**FLIGHTPLAN**

#	Name	Navaid/Coords/DME	ALT	TOT
1	AAR Arco1	N32 36 09.014 E034 33 17.862	24000	
2	Fence In / Holding	N32 42 30.595 E035 34 14.927	25000	
3	IP / Holding	N32 42 24.453 E035 55 50.573	25000	
4	SAM 1	N33 05 32.231 E036 32 53.994	0	
5	SAM 2	N33 11 48.304 E036 09 09.253	0	
6	Ramat David AB / Alternate	N32 39 57 E035 09 55	25000	
7	AAR ARCO2	N32 36 02.232 E034 33 17.862	25000	
8	CVN-73 George Washington	N32 23 43.558 E033 19 00.957	1500	

**COMMS**

Radio	Usage
1	12(GW), 16(OL), 18(AC2), 16(OL), 12(GW)
2	Inhouse 261.25
3	MIDS A:22 / B:44
4	Raptor 134.0

## NOTES

====

TO: 08:30

Station Time: 60 min

Bingo: 4000

Joker: 6000

CAT 1/2/3

====

Weather :

Time : 02.05.2023, 08:00 lcl / 05:00Z

Clouds : BROKEN 14436ft

Wind : 0ft 053/6 , 1600ft 056/14 , 6600ft 056/16 , 26000ft 07/16

QNH 30.02 inHg

====

Bullseye

N 32°48.700' E 34°59.233' (Haifa)

**SUPPORT****Tanker**

Callsign	TCN	Freq	ALT	TAS
ARCO 2	41Y	360.8	FL220	400
	Pos	ARCO2: (N3653 E03452)		
TEXACO 2	44Y	244.78	FL150	250
	Pos	TEXACO2: (N3424 E03403)		

**AWACS**

Callsign	Freq	ALT	Pos
OVERLORD2	377.8	FL320	N3713 E03643 - N3714 E03749

## OTHER FLIGHTS

Callsign	Mission	Airframe	Freq	TCN	Grpld	Laser
Tiger 3	CAP	4x F/A-18C	264.15	1/64		155X
AO	WEST OF DAMASCUS	Task	ATO801 B26/27			
Axe 1	Strike	3x A-10C	132.15	1/64	21	166X
AO	Depots Aita + Bent	Task	ATO 804 00B19			
Beast 2	Strike	3x A-10C	132.25	1/64	25	165X
AO	Depot Marja	Task	ATO 804 00B19			
Nazgul 6	CAP	4x F-15E	262.45	29/92		166X
AO	Northern Israel & Jordan	Task	ATO 801 30B35			
Claw 3	AR	2x A-10C	132.35	1/64	30	163X
AO	KB Alpha	Task	ATO 805 00B17			
Fury 4	AR	2x A-10C	132.45	1/64	32	164X
AO	KB Bravo	Task	ATO 805 00B16			
Raptor 1	SEAD	4x F-16C	134.0	1/64		162X
AO	FLOT 25B30	Task	ATO 802			
Rattler 1	BAI	1x AH-64D	133.5	1/64		125X
AO	KB C	Task	BAI			

**RADIO CHANNELS**

#	Freq	Name
1		Flight/Squadron specific
2	288.2	Akrotiri ATIS
3	240.1	Akrotiri Ground
4	339.85	Aktrotiri Tower
5	335.05	Akrotiri Approach
6	360.1	Incirlik Tower
7	371.35	Incirlik Ground
8	377.475	Incirlik ATIS
9		No Preset
10	127.3	Paphos ATIS
11	353.8	Paphos Tower
12	304.0	CVN-73 George Washington
13	302.0	LHA-1 Tarawa
14	259.0	CV-59 Forrestal
15		No Preset
16	377.8	Overlord
17	265.0	KC-135 Texaco-1 medium/slow
18	319.8	KC-135 Arco-1
19	360.8	KC-135MPRS Arco-2
20	256.0	S-3B Recovery Tanker

**RAMROD**

0	1	2	3	4	5	6	7	8	9
I	M	P	O	R	T	U	N	E	D

**KTC 1400 C**

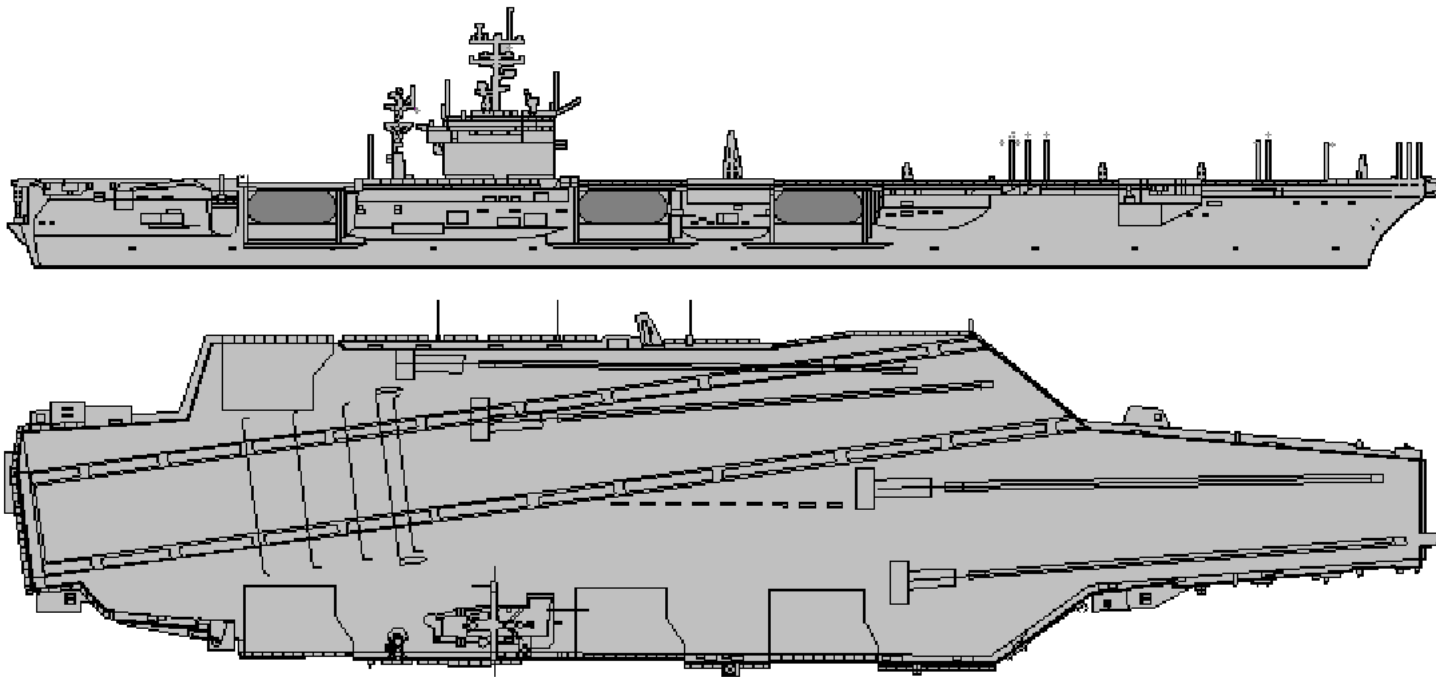
	0	1	2	3	4	5	6	7	8	9
A	ROHQ	CME	DAX	IW	GY	VNU	BT	FJ	LP	SK
B	MVRC	PBH	OUW	JA	DI	YKS	QT	NL	EG	XF
C	YQRJ	DAK	HUT	WG	LS	FCM	VX	ON	IP	EB
D	JWAN	GLS	OIH	FD	UR	TYC	EX	MQ	VP	BK
E	EADR	CXF	UVO	NH	PB	SGJ	WL	TQ	KM	IY
F	SAKW	CEI	BLV	JU	GO	HNM	FR	DQ	YP	XT
G	CUMB	EYS	JAQ	KW	IO	XPG	RH	FL	DN	VT
H	JUWS	TPV	OKE	XA	ND	QHR	CG	MF	LY	IB
I	SXFA	EUP	TKR	WM	JY	VID	GQ	LH	OC	BN
J	YROU	WBM	HAX	CS	KV	TJE	GF	QP	NL	DI
K	UNJA	OTD	KPR	HY	BS	LGM	IX	WE	CV	QF
L	HLQO	MAJ	WIE	GC	YN	FRK	PV	BD	TS	UX
M	FQSI	KJB	WVO	AY	XC	UME	DH	GL	TN	RP
N	LOUJ	GYX	REI	FA	WK	HNV	TC	DB	PQ	SM
O	CXBP	LVD	SEG	MH	AN	UTO	KJ	WI	FR	QY
P	BMYN	EPF	CWT	JG	SK	IHO	DQ	XU	AL	RV
Q	MOPB	IYH	AUF	KS	QW	LTD	JR	CE	NV	XG
R	HGUL	CNY	RVI	DF	TK	XBQ	PA	ES	WM	OJ
S	XWVT	OJD	HEQ	AP	LB	FRG	IY	SN	KC	MU
T	WYVK	PHI	GUD	FN	RO	SCJ	LT	QX	AE	BM
U	JXMP	SIR	VYE	NQ	FB	WOC	GD	UL	AT	HK
V	VDNE	UFG	SOC	YL	IB	AJR	KT	QH	XW	PM
W	VTJA	UNM	LQH	BG	FE	KID	RO	WS	PC	YX
X	HNDG	ORQ	YPI	WB	KJ	XLF	MU	VA	ES	TC
Y	HRYQ	SVU	PKF	CN	IO	GME	WA	XT	BD	JL

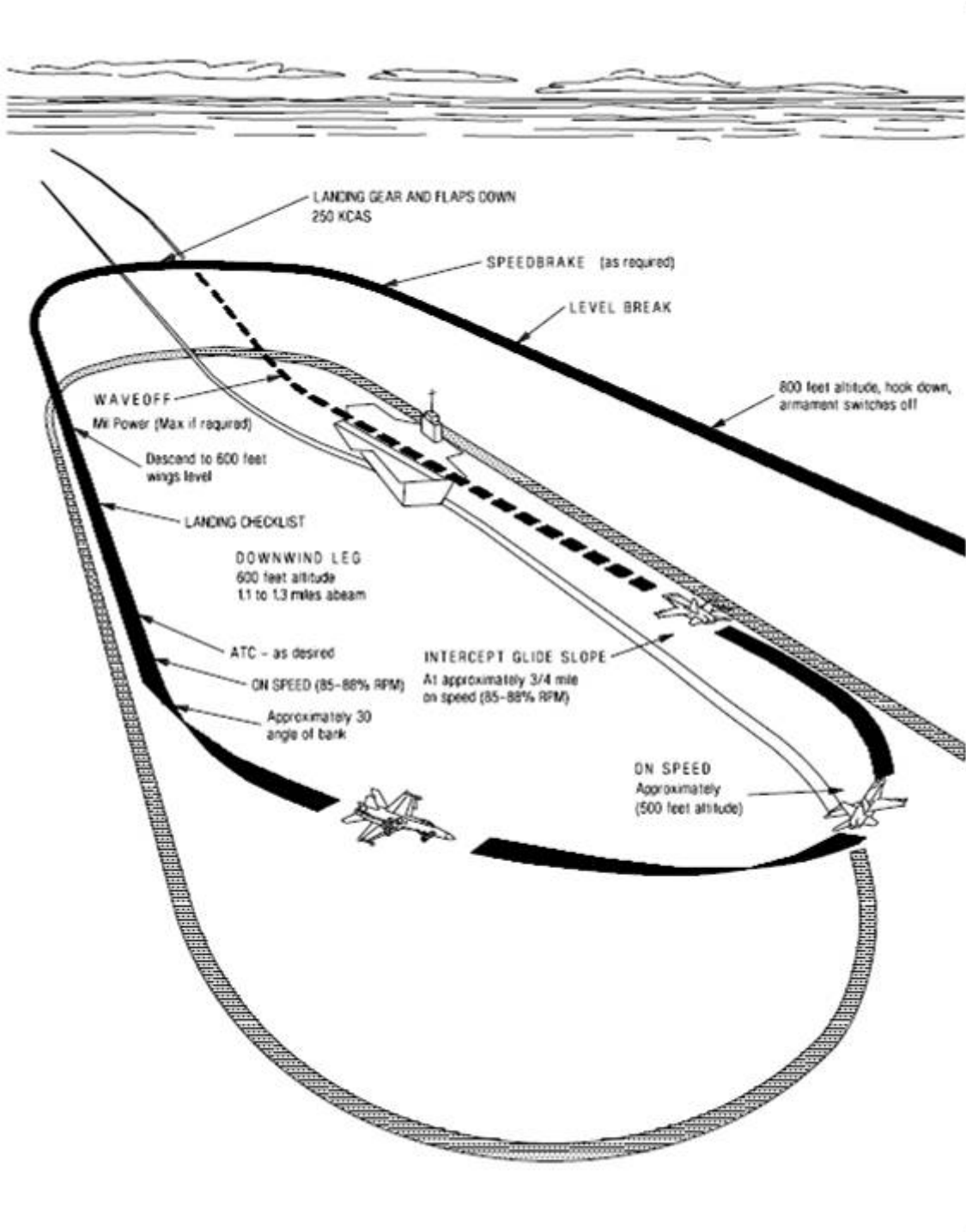
**NAVAIDS**

<b>Id</b>	<b>Name</b>	<b>Channel</b>	<b>Position</b>	<b>Elevation</b>
DAN	Incirlik	21	N37 00.950 E035 26.883	243
AKR	Akrotiri	107	N34 34.765 E032 57.769	147
PHA	Paphos	79	N34 42.997 E032 28.963	35
RMD	Ramat David	84	N32 39.892 E035 11.265	136
OS66	Kuweires Military Aviation Institute	36	N36 11.362 E037 34.226	1200





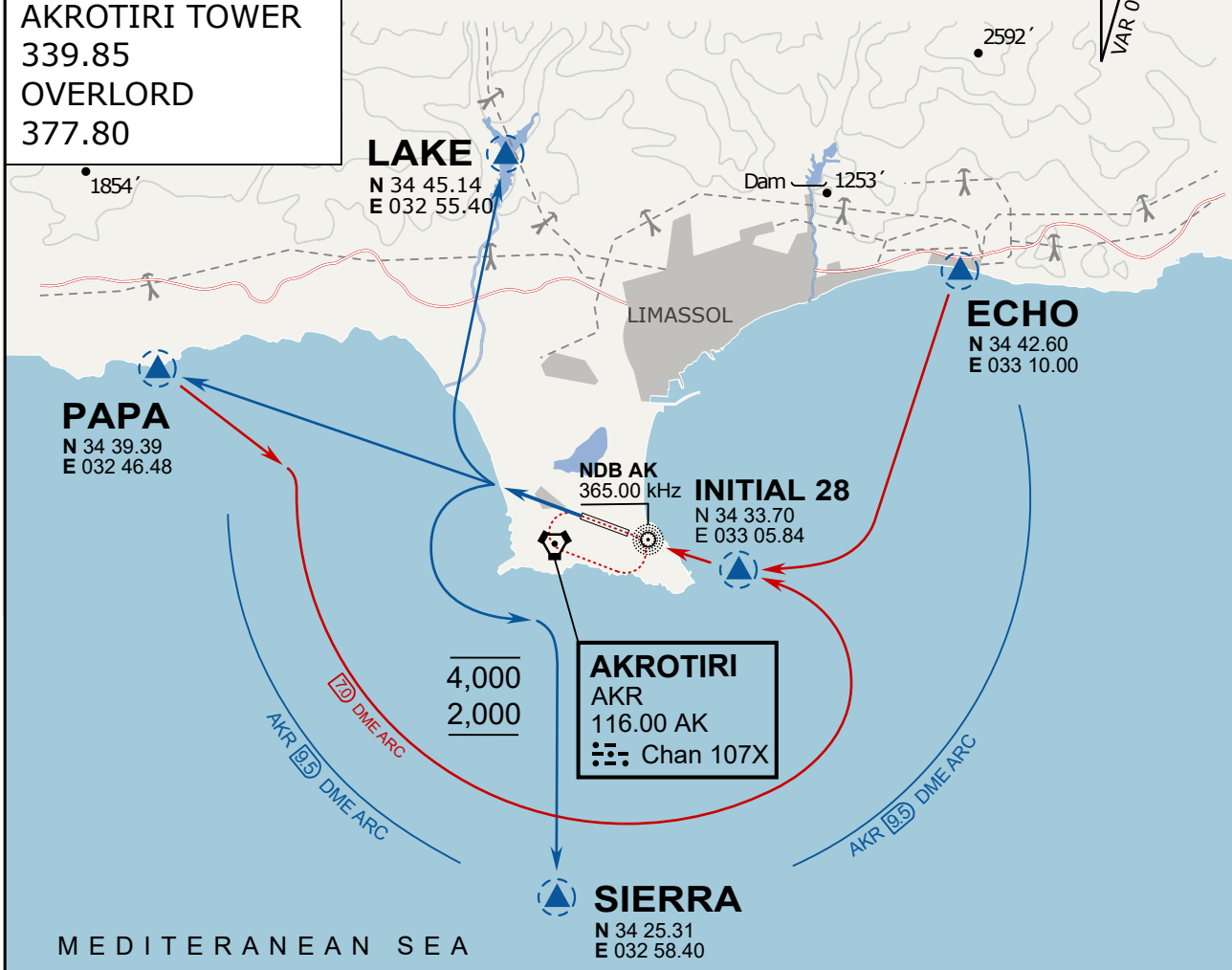




**ATIS**  
 288.20  
**AKROTIRI GROUND**  
 240.10  
**AKROTIRI TOWER**  
 339.85  
**OVERLORD**  
 377.80

### NOT FOR CIVIL USE

CAUTION: If unable to comply  
 with restrictions advise ATC  
 prior to departure.



### ARR / DEP ROUTE DESCRIPTION

#### STRAIGHT-IN RWY28

Pass ENTRY at 5.000' MSL or below, pass INITIAL at 1.500' MSL or below.

#### OVERHEAD BREAK RWY28

Pass ENTRY at 5.000' MSL or below, pass INITIAL at 2.000' MSL, break to the south.

#### DEPARTURE GENERAL

Pass Departure end of runway at 1.000' or below.

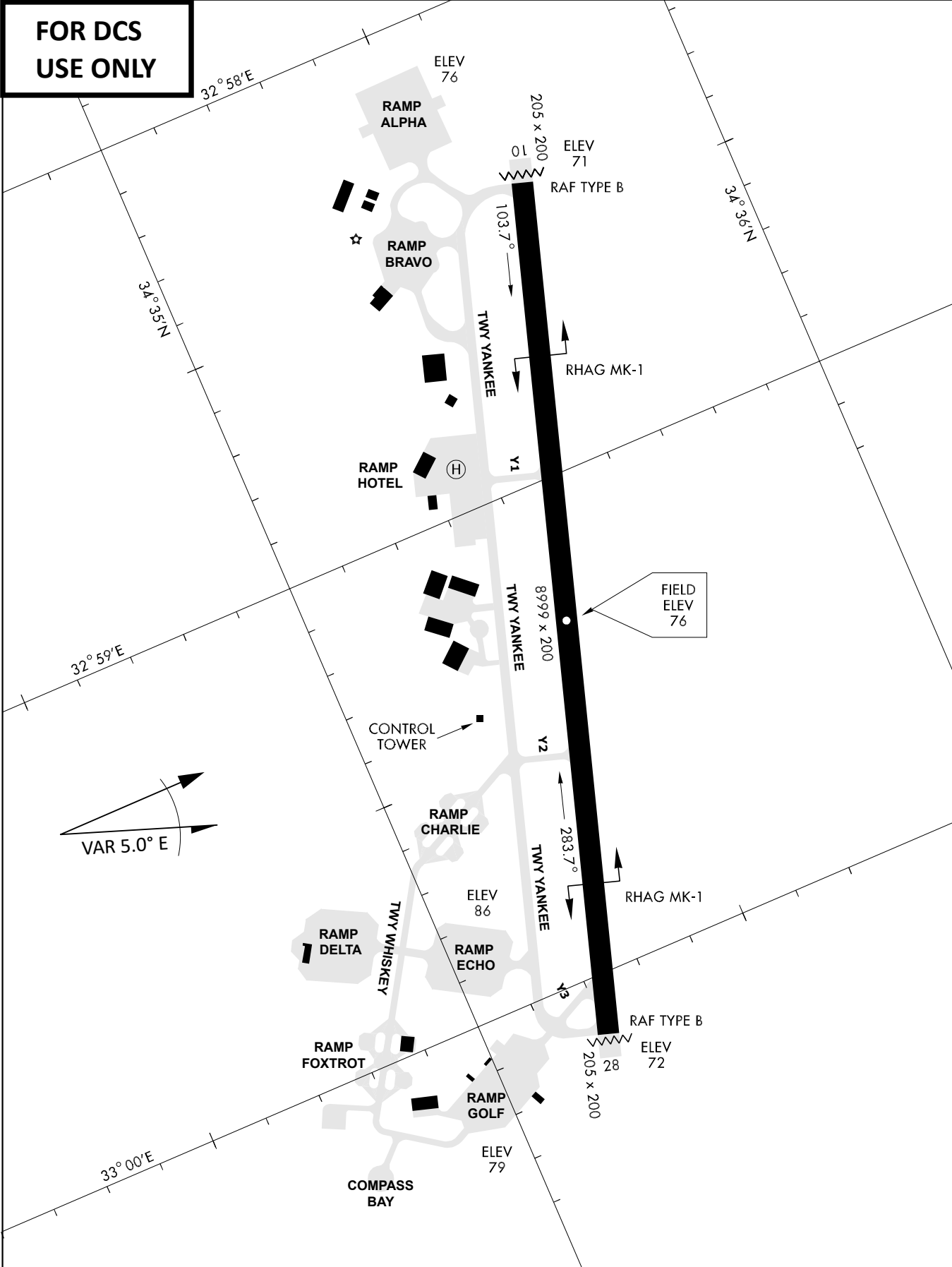
DEP RWY28 PAPA: Fly straight ahead to exit.

DEP RWY28 LAKE: Fly straight ahead until coast, than right turn direct exit.

DEP RWY28 SIERRA: Fly straight ahead until coastline, then climbing left turn, intercept AKR R-180 to exit.

DEP ECHO: no exit.

**FOR DCS  
 USE ONLY**



ATIS	AKROTIRI GND	AKROTIRI TWR	OVERLORD CONTROL	TACAN	FIELD ELEVATION
288.20 MHz	240.10   122.10	339.85   130.075	377.8	AKR 107X	<b>75 [ft] 23 [m]</b>