

**MISSION DATA CARD**

OPORD		Callsign		Mission		Date/Time		
2843/2024		Tiger 1		Training		292000APR24		
Task	DEAD Training SA2/SAX Range					Freq		
AO						261.15		
Departure				Recovery				
CAT				CASE I				
#	Callsign		Pilot		IFF	TCN	LSR	NET
-1	Tiger 1-1		Ghost		1011	1Y	1551	01/01
-2	Tiger 1-2		Kosmoss		1012	64Y	1552	01/02

**LOADOUT**

A/A	2xA9X, A120C				GUN	100% HEI-T	
A/G	2x2x ADM-141A - BRU-42, 4xA154A				CHF	90	
POD	TGP				FLR	30	
TKS	FPU-8A				FUEL	100%	

**TOLD**

	Takeoff	Target	Joker	Bingo	Land
FUEL	13047			4000	2000

**AIRBASES**

	Name	TCN	ATIS	GND	TWR	RWY	Elev	ILS
Dep	CVN-73 USS G. Washington	55X		ICLS 12	304.0			
Arr	CVN-73 USS G. Washington	55X		ICLS 12	304.0			
Div	Akrotiri AFB	107X	288.2	240.1	339.85	28	62	109.7

**FLIGHTPLAN**

#	Name	Navaid/Coords/DME	ALT	TOT
1	Fence In	N34 28 25.432 E034 11 01.099	25000	
2	IP	N35 08 13.541 E034 22 05.023	25000	
3	Target Area SA2/SA3	N35 30 33.268 E034 15 18.640	0	
4	Cold	N34 58 00.799 E034 05 06.704	25000	
5	AAR TEX2	N34 24 51.494 E034 05 41.554	15000	
6	RAF Akrotiri	N34 35 26 E032 59 17	3000	
7	CVN-73 George Washington	N33 42 43.617 E033 02 01.315	3000	

**COMMS**

Radio	Usage
1	12(GW), 16(OL), 9(TX2), 16(OL), 12(GW) / Alternate 4(AT)
2	Inhouse 261.15
3	MIDS A:22 / B:44

**SUPPORT****Tanker**

Callsign	TCN	Freq	ALT	TAS
ARCO 2	41Y	360.8	FL220	400
	Pos	ARCO2: (N3653 E03452)		
TEXACO 2	44Y	244.78	FL150	250
	Pos	TEXACO2: (N3424 E03403)		

**AWACS**

Callsign	Freq	ALT	Pos
OVERLORD2	377.8	FL320	N3713 E03643 - N3714 E03749

## OTHER FLIGHTS

Callsign	Mission	Airframe	Freq	TCN	Grpld	Laser
Outlaw 5	Training	4x AH-64D	133.5	1/64		171X
AO	Akamas Bombing Range	Task	Bop-Up Attack			
Python* 1	Training	1x AV-8B N/A	264.55	1/64		168X
AO		Task				
Tiger 2	Training	2x F/A-18C	261.25	1/64	2	156X
AO		Task	DEAD Training SA2/SAx Range			
Nazgul 6	Training	4x F-15E	262.45	1/64		156X
AO		Task				
Edelweiss 1	Training	1x F/A-18C	264.15	1/64		171X
AO		Task				
Monster 1	Training	2x A-10C	132.15	1/64	21	161X
AO	Mission Area North	Task				
T-Rex 2	Training	2x A-10C	132.25	1/64	25	165X
AO	Mission Area North	Task	Coin Mission			
Beast 1	Training	2x A-10C	264.05	1/64	25	170X
AO		Task				

**RADIO CHANNELS**

#	Freq	Name
1		Flight/Squadron specific
2	288.2	Akrotiri ATIS
3	240.1	Akrotiri Ground
4	339.85	Aktrotiri Tower
5	335.05	Akrotiri Approach
6	360.1	Incirlik Tower
7	371.35	Incirlik Ground
8	377.475	Incirlik ATIS
9		No Preset
10	127.3	Paphos ATIS
11	353.8	Paphos Tower
12	304.0	CVN-73 George Washington
13	302.0	LHA-1 Tarawa
14	259.0	CV-59 Forrestal
15		No Preset
16	377.8	Overlord
17	265.0	KC-135 Texaco-1 medium/slow
18	319.8	KC-135 Arco-1
19	360.8	KC-135MPRS Arco-2
20	256.0	S-3B Recovery Tanker

**RAMROD**

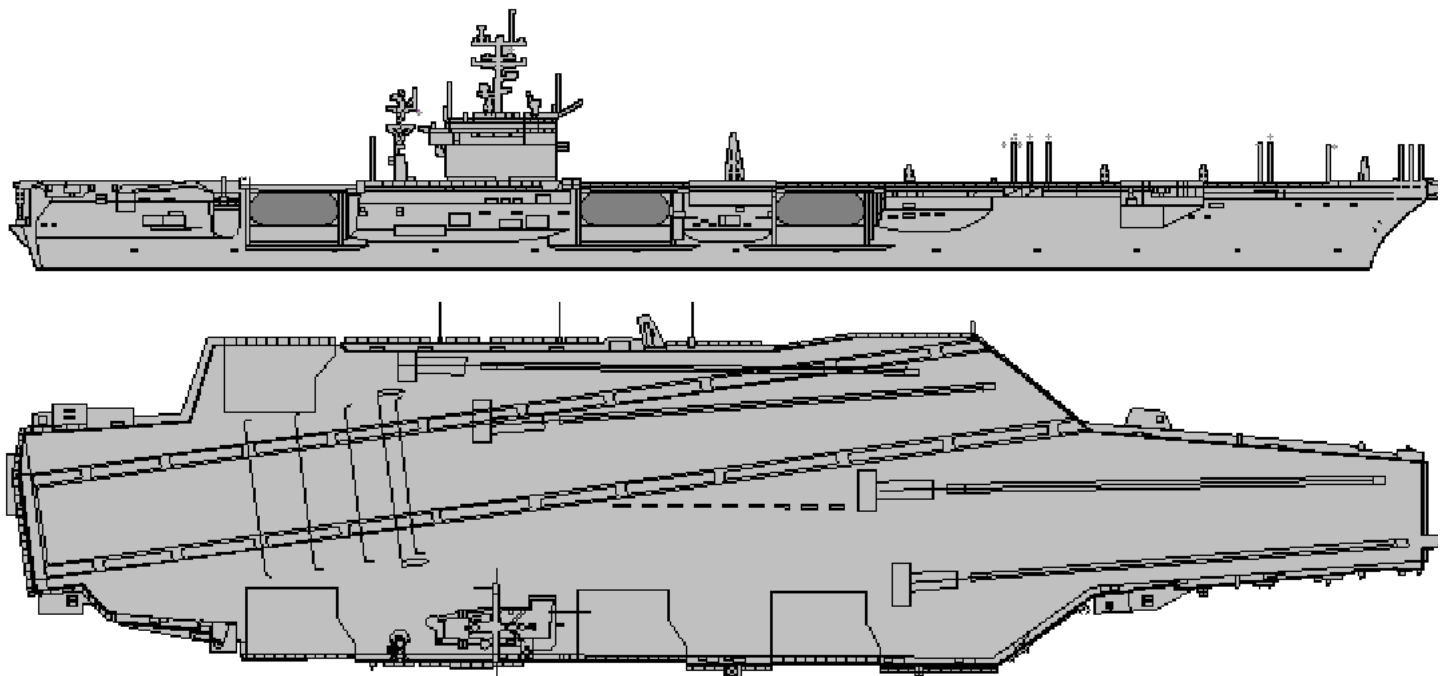
0	1	2	3	4	5	6	7	8	9
L	A	C	H	R	Y	M	O	S	E

**KTC 1400 C**

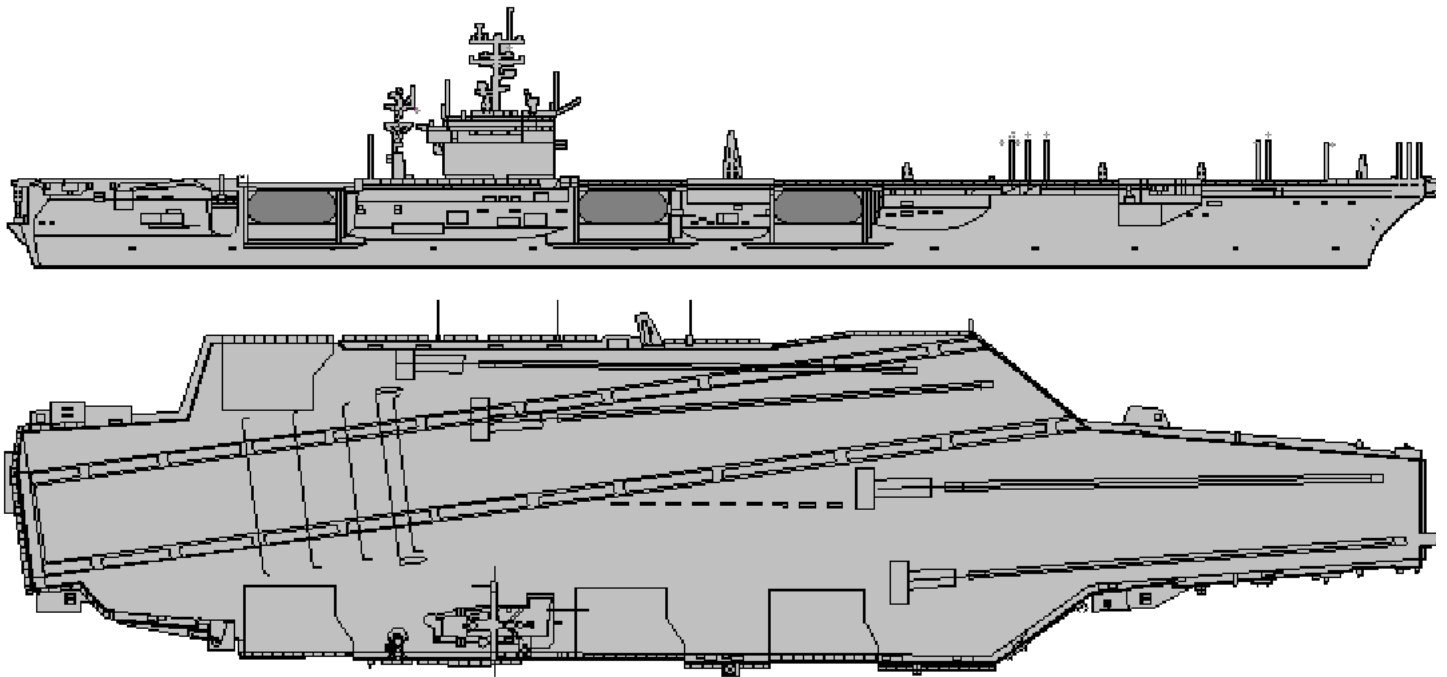
	0	1	2	3	4	5	6	7	8	9
A	EMLD	WUB	IOV	RJ	PN	CAQ	YS	GK	FT	HX
B	AXYV	QKF	MNU	GL	PW	OEH	JC	RT	BI	DS
C	WNAP	HCR	GYK	SO	UT	IFE	JM	BQ	VX	DL
D	HKRI	JXF	CDN	MB	LQ	WAO	TP	YU	GV	SE
E	CVXP	FEW	IDL	BN	TG	AKY	JS	MR	OU	QH
F	KYIB	LVQ	TRU	FX	JG	HOP	NA	MW	CS	DE
G	WVQE	NOM	TUP	GH	LC	IDA	XF	YB	RJ	SK
H	FQJC	HOM	USR	TD	BP	KIV	XA	EG	NW	YL
I	JVOF	DBR	HMS	XL	QI	TCW	EU	AY	PK	NG
J	CDXU	ETA	VSM	BO	HW	PYQ	RK	FL	IJ	GN
K	ILCJ	HBO	GAK	FW	NX	EDQ	YP	TS	UM	RV
L	MRPD	SUV	FOL	HQ	NA	CEI	JB	WT	YX	KG
M	WXQO	EYJ	IGC	AN	PB	HKS	UM	TL	FD	VR
N	EVPM	KHA	IDO	JN	LT	QBS	FY	WG	RC	UX
O	INLH	FEB	VWM	UQ	PT	KJX	RC	DO	YG	SA
P	YXOJ	UAE	LWC	QR	IV	PND	MG	KH	TB	FS
Q	XDHJ	TYG	NLP	CB	EK	QFS	RO	UV	MA	IW
R	YEAL	VBD	XUI	OR	PF	WKJ	GQ	CM	HT	SN
S	XRYN	VET	OLQ	MP	AU	HBG	KJ	CF	ID	SW
T	KCMP	ABF	JIG	WL	OT	UXV	HQ	ER	DN	SY
U	XMSF	TLU	ANB	IQ	PY	JRO	ED	GH	KV	WC
V	PNLH	ITE	CAX	YW	GU	FJQ	OD	RK	MB	SV
W	PJAR	MOY	WNK	XL	CH	FUV	SI	QD	GT	EB
X	TGSK	AXB	MWC	DN	VY	FRP	JO	IU	QL	HE
Y	QSLK	DEG	OVA	UC	BW	MHJ	FR	TX	PI	YN

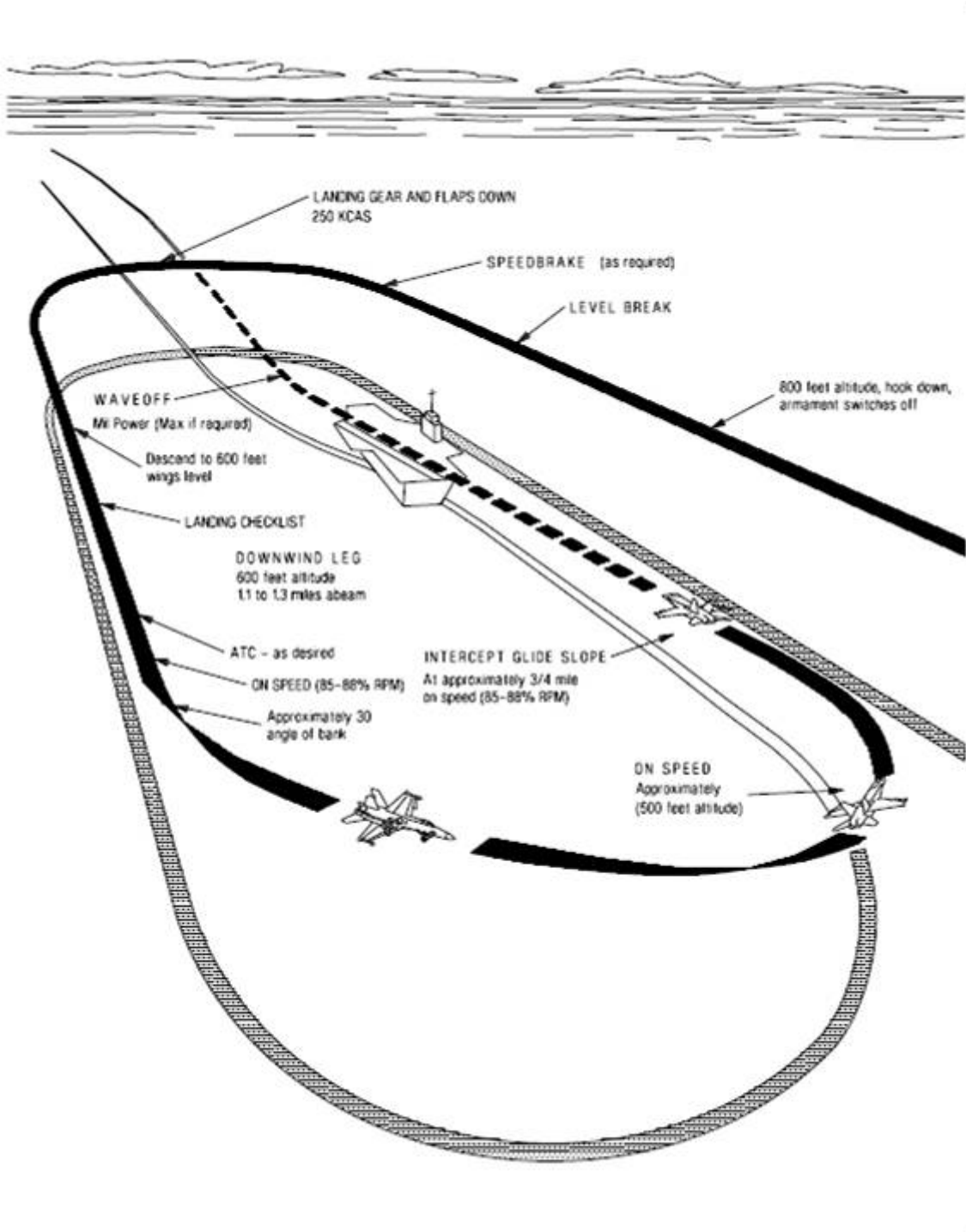
**NAVAIDS**

<b>Id</b>	<b>Name</b>	<b>Channel</b>	<b>Position</b>	<b>Elevation</b>
DAN	Incirlik	21	N37 00.950 E035 26.883	243
AKR	Akrotiri	107	N34 34.765 E032 57.769	147
PHA	Paphos	79	N34 42.997 E032 28.963	35
RMD	Ramat David	84	N32 39.892 E035 11.265	136
OS66	Kuweires Military Aviation Institute	36	N36 11.362 E037 34.226	1200





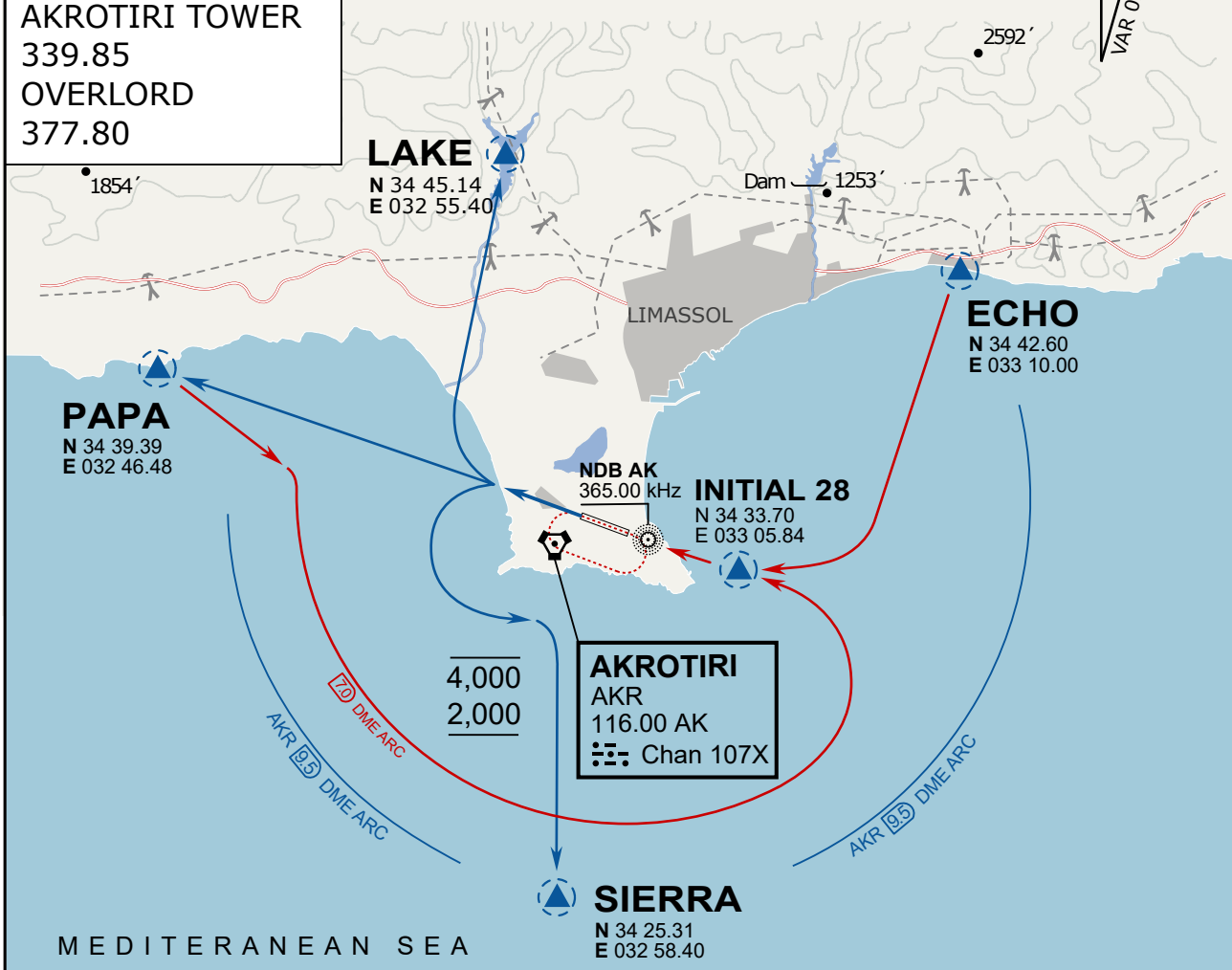




**ATIS**  
 288.20  
**AKROTIRI GROUND**  
 240.10  
**AKROTIRI TOWER**  
 339.85  
**OVERLORD**  
 377.80

### NOT FOR CIVIL USE

CAUTION: If unable to comply  
 with restrictions advise ATC  
 prior to departure.



### ARR / DEP ROUTE DESCRIPTION

#### STRAIGHT-IN RWY28

Pass ENTRY at 5.000' MSL or below, pass INITIAL at 1.500' MSL or below.

#### OVERHEAD BREAK RWY28

Pass ENTRY at 5.000' MSL or below, pass INITIAL at 2.000' MSL, break to the south.

#### DEPARTURE GENERAL

Pass Departure end of runway at 1.000' or below.

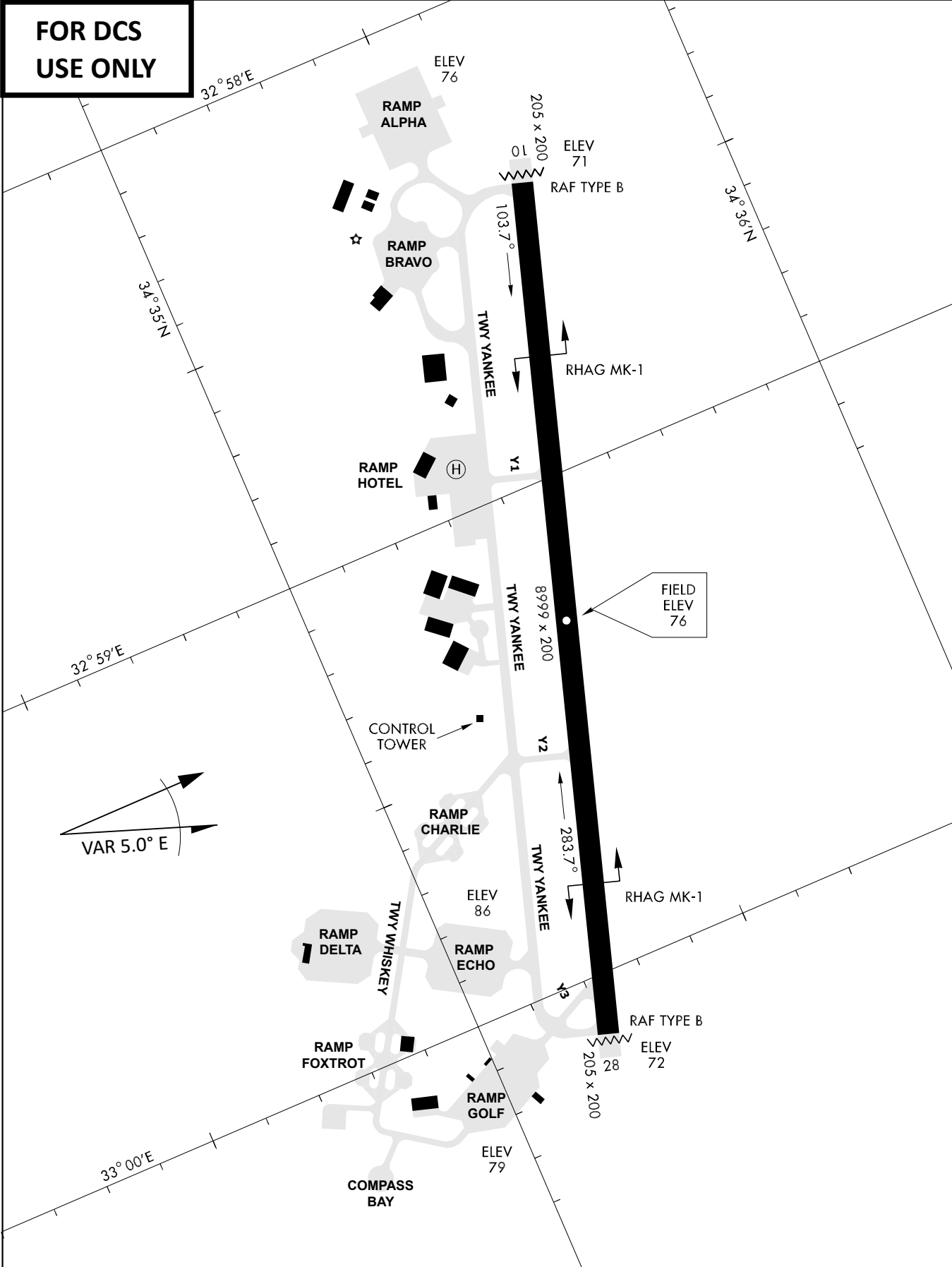
DEP RWY28 PAPA: Fly straight ahead to exit.

DEP RWY28 LAKE: Fly straight ahead until coast, than right turn direct exit.

DEP RWY28 SIERRA: Fly straight ahead until coastline, then climbing left turn, intercept AKR R-180 to exit.

DEP ECHO: no exit.

**FOR DCS  
 USE ONLY**



ATIS	AKROTIRI GND	AKROTIRI TWR	OVERLORD CONTROL	TACAN	FIELD ELEVATION
288.20 MHz	240.10   122.10	339.85   130.075	377.8	AKR 107X	<b>75 [ft] 23 [m]</b>