

MISSION DATA CARD

OPORD		Callsign		Mission		Date/Time		
2842/2024		Raptor 1		Training		290010APR24		
Task	Running rendezvous Training					Freq		
AO	Bomb Range					134.25		
Departure				Recovery				
RWY28 VFR				RWY10 VFR				
#	Callsign		Pilot		IFF	TCN	LSR	NET
-1	Raptor 1-1		Jinx		1611	1Y	1621	
-2	Raptor 1-2		Woodman		1612	64Y	1622	

LOADOUT

A/A	2xA120C, 2xA9X				GUN	100% HEI-T	
A/G					CHF	120	
POD					FLR	0	
TKS	2xFT300				FUEL	100%	

TOLD

	Takeoff	Target	Joker	Bingo	Land
FUEL	11169				

AIRBASES

	Name	TCN	ATIS	GND	TWR	RWY	Elev	ILS
Dep	Akrotiri AFB	107X	288.2	240.1	339.85	28	62	109.7
Arr	Akrotiri AFB	107X	288.2	240.1	339.85	28	62	109.7
Div	Paphos Internationl	79X	127.3		353.8	29	40	108.9

FLIGHTPLAN

#	Name	Navaid/Coords/DME	ALT	TOT
1	ECHO	N34 42 31.443 E033 10 00.221	5000	
2	PAPA	N34 39 43.973 E032 49 10.352	5000	
3	SIERRA	N34 24 35.912 E032 57 53.963	5000	
4	RAF Akrotiri	N34 35 26 E032 59 17	1500	

SUPPORT**Tanker**

Callsign	TCN	Freq	ALT	TAS
ARCO 1	22Y	319.8	FL222	400
Pos	ARCO1: (N3701 E03457)			

RADIO CHANNELS

#	Freq	Name
1		Flight/Squadron specific
2	288.2	Akrotiri ATIS
3	240.1	Akrotiri Ground
4	339.85	Aktrotiri Tower
5	335.05	Akrotiri Approach
6	360.1	Incirlik Tower
7	371.35	Incirlik Ground
8	377.475	Incirlik ATIS
9		No Preset
10	127.3	Paphos ATIS
11	353.8	Paphos Tower
12	304.0	CVN-73 George Washington
13	302.0	LHA-1 Tarawa
14	259.0	CV-59 Forrestal
15		No Preset
16	377.8	Overlord
17	265.0	KC-135 Texaco-1 medium/slow
18	319.8	KC-135 Arco-1
19	360.8	KC-135MPRS Arco-2
20	256.0	S-3B Recovery Tanker

RAMROD

0	1	2	3	4	5	6	7	8	9
L	A	C	H	R	Y	M	O	S	E

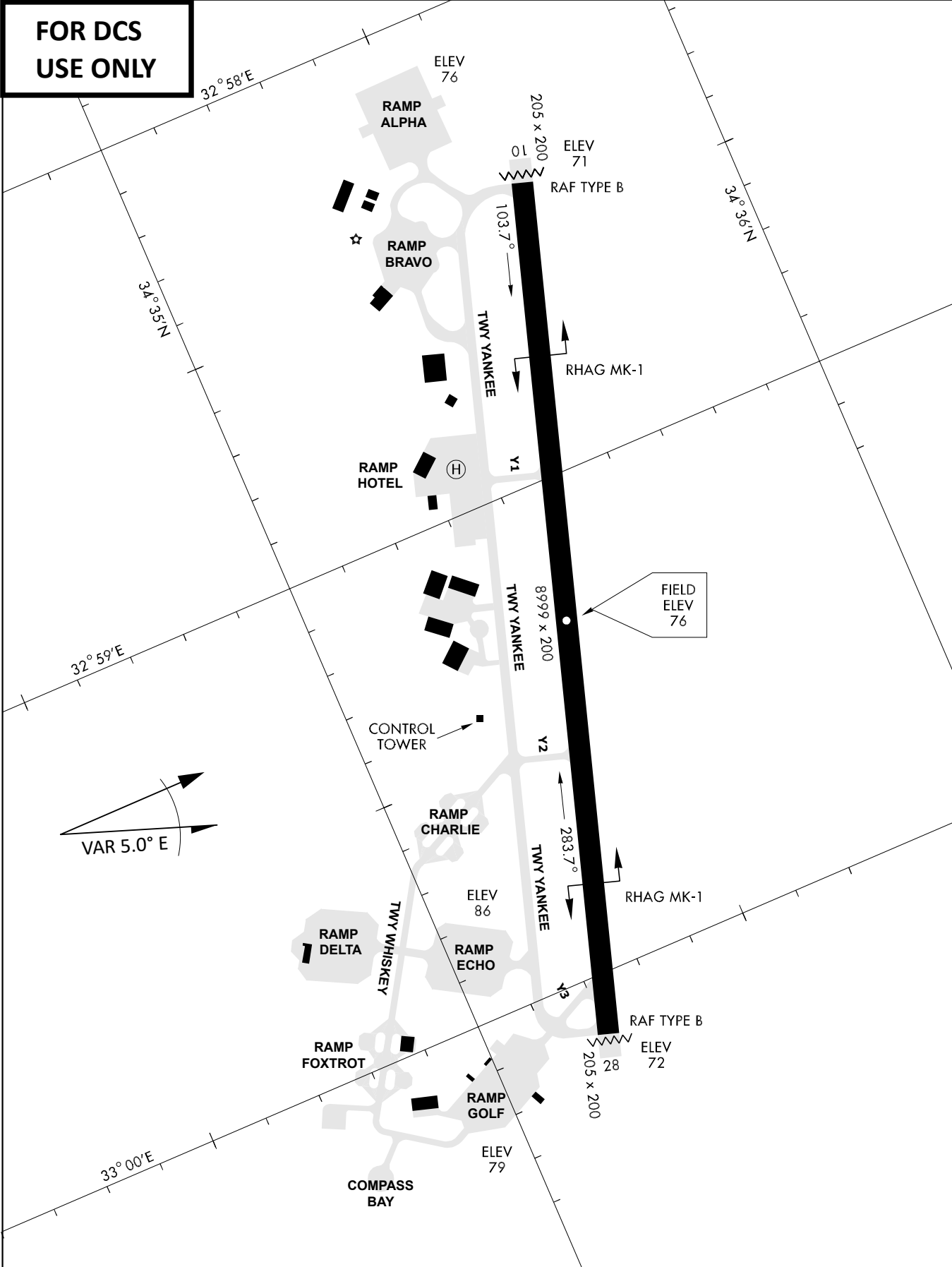
KTC 1400 C

	0	1	2	3	4	5	6	7	8	9
A	EMLD	WUB	IOV	RJ	PN	CAQ	YS	GK	FT	HX
B	AXYV	QKF	MNU	GL	PW	OEH	JC	RT	BI	DS
C	WNAP	HCR	GYK	SO	UT	IFE	JM	BQ	VX	DL
D	HKRI	JXF	CDN	MB	LQ	WAO	TP	YU	GV	SE
E	CVXP	FEW	IDL	BN	TG	AKY	JS	MR	OU	QH
F	KYIB	LVQ	TRU	FX	JG	HOP	NA	MW	CS	DE
G	WVQE	NOM	TUP	GH	LC	IDA	XF	YB	RJ	SK
H	FQJC	HOM	USR	TD	BP	KIV	XA	EG	NW	YL
I	JVOF	DBR	HMS	XL	QI	TCW	EU	AY	PK	NG
J	CDXU	ETA	VSM	BO	HW	PYQ	RK	FL	IJ	GN
K	ILCJ	HBO	GAK	FW	NX	EDQ	YP	TS	UM	RV
L	MRPD	SUV	FOL	HQ	NA	CEI	JB	WT	YX	KG
M	WXQO	EYJ	IGC	AN	PB	HKS	UM	TL	FD	VR
N	EVPM	KHA	IDO	JN	LT	QBS	FY	WG	RC	UX
O	INLH	FEB	VWM	UQ	PT	KJX	RC	DO	YG	SA
P	YXOJ	UAE	LWC	QR	IV	PND	MG	KH	TB	FS
Q	XDHJ	TYG	NLP	CB	EK	QFS	RO	UV	MA	IW
R	YEAL	VBD	XUI	OR	PF	WKJ	GQ	CM	HT	SN
S	XRYN	VET	OLQ	MP	AU	HBG	KJ	CF	ID	SW
T	KCMP	ABF	JIG	WL	OT	UXV	HQ	ER	DN	SY
U	XMSF	TLU	ANB	IQ	PY	JRO	ED	GH	KV	WC
V	PNLH	ITE	CAX	YW	GU	FJQ	OD	RK	MB	SV
W	PJAR	MOY	WNK	XL	CH	FUV	SI	QD	GT	EB
X	TGSK	AXB	MWC	DN	VY	FRP	JO	IU	QL	HE
Y	QSLK	DEG	OVA	UC	BW	MHJ	FR	TX	PI	YN

NAVAIDS

Id	Name	Channel	Position	Elevation
DAN	Incirlik	21	N37 00.950 E035 26.883	243
AKR	Akrotiri	107	N34 34.765 E032 57.769	147
PHA	Paphos	79	N34 42.997 E032 28.963	35
RMD	Ramat David	84	N32 39.892 E035 11.265	136
OS66	Kuweires Military Aviation Institute	36	N36 11.362 E037 34.226	1200

**FOR DCS
 USE ONLY**

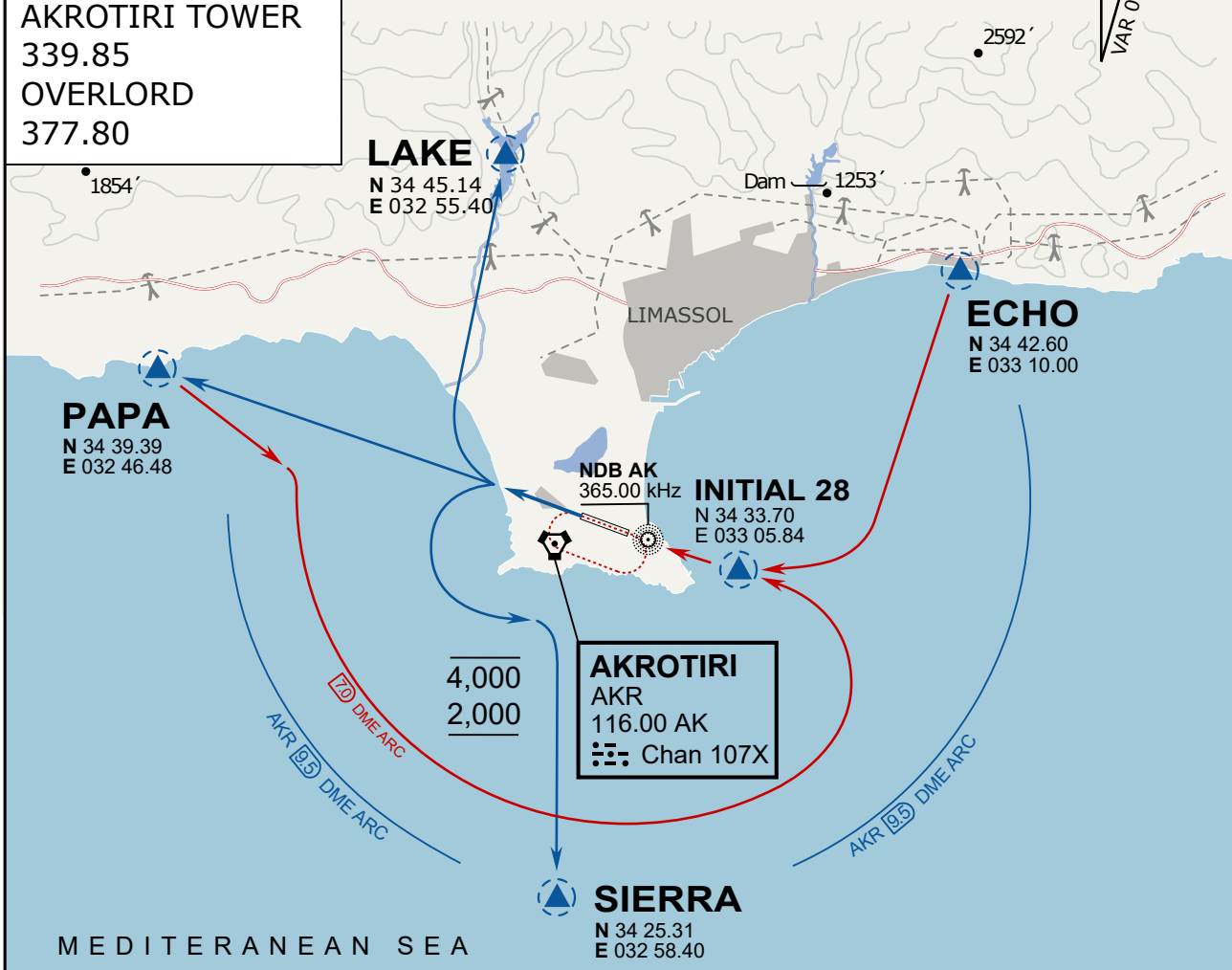


ATIS	AKROTIRI GND	AKROTIRI TWR	OVERLORD CONTROL	TACAN	FIELD ELEVATION
288.20 MHz	240.10 122.10	339.85 130.075	377.8	AKR 107X	75 [ft] 23 [m]

ATIS
 288.20
AKROTIRI GROUND
 240.10
AKROTIRI TOWER
 339.85
OVERLORD
 377.80

NOT FOR CIVIL USE

CAUTION: If unable to comply
 with restrictions advise ATC
 prior to departure.



MEDITERRANEAN SEA

ARR / DEP ROUTE DESCRIPTION

STRAIGHT-IN RWY28

Pass ENTRY at 5.000' MSL or below, pass INITIAL at 1.500' MSL or below.

OVERHEAD BREAK RWY28

Pass ENTRY at 5.000' MSL or below, pass INITIAL at 2.000' MSL, break to the south.

DEPARTURE GENERAL

Pass Departure end of runway at 1.000' or below.

DEP RWY28 PAPA: Fly straight ahead to exit.

DEP RWY28 LAKE: Fly straight ahead until coast, than right turn direct exit.

DEP RWY28 SIERRA: Fly straight ahead until coastline, then climbing left turn, intercept AKR R-180 to exit.

DEP ECHO: no exit.

ATIS

288.20

AKROTIRI GROUND

240.10

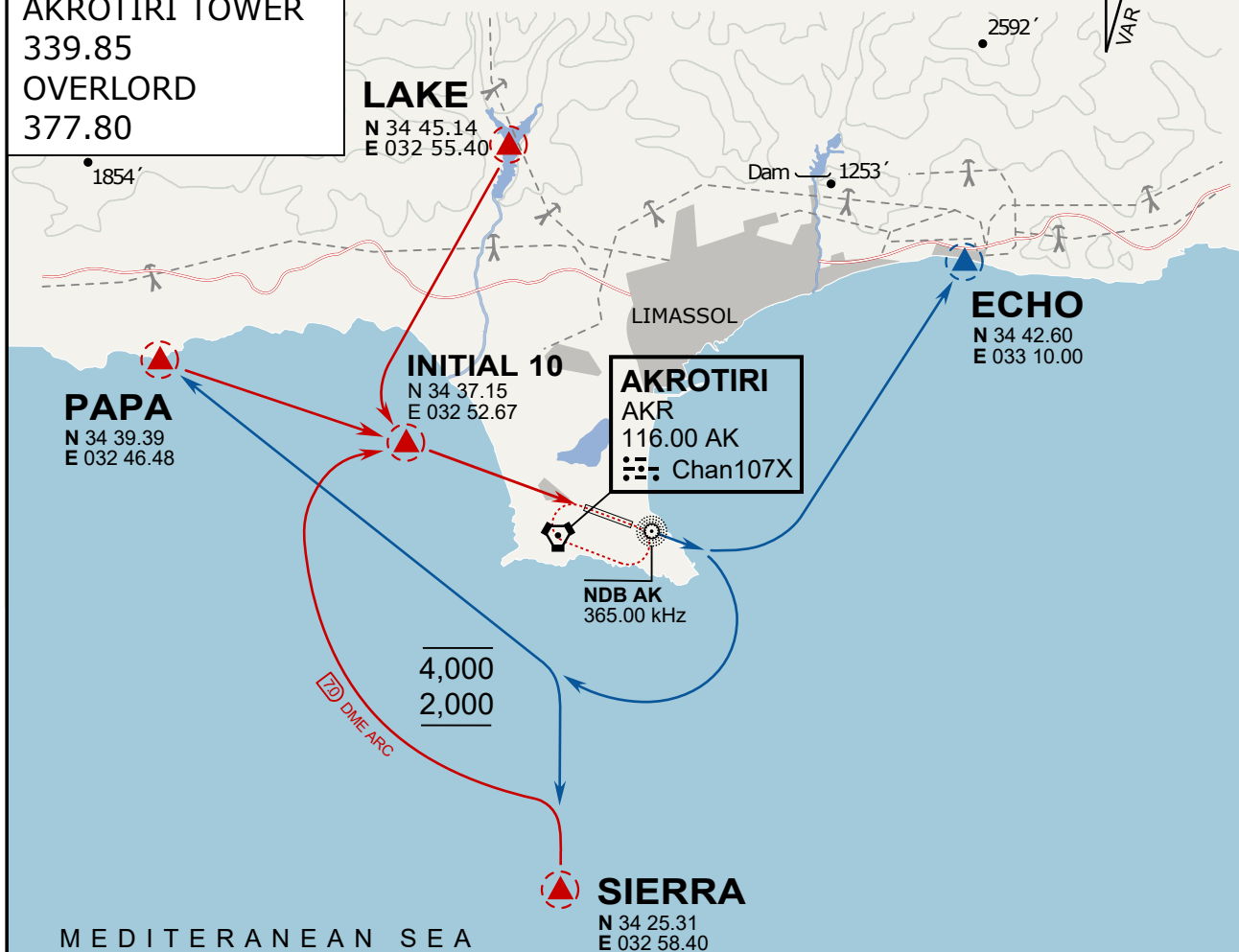
AKROTIRI TOWER

339.85

OVERLORD

377.80

NOT FOR CIVIL USE

CAUTION: If unable to comply
with restrictions advise ATC
prior to departure.

MEDITERRANEAN SEA

ARR / DEP ROUTE DESCRIPTION

ARRIVAL GENERAL

Pass Entry at 5.000' or below. Overhead Brake RWY 10: pass INITIAL 10 at 2.000' MSL.
Straight-in RWY 10 : pass INITIAL 1.500' or below.

ARR RWY10 PAPA / LAKE: Direct initial.

ARR RWY10 SIERRA: Intercept ARC 7 of AKR to INITIAL 10.

ARR ECHO: no ENTRY.

DEPARTURE GENERAL

Pass Departure end of runway at 1.000' AGL or below. Keep RWY heading until coastline.

DEP RWY10 ECHO: Direct EXIT.

DEP RWY10 SIERRA: Climbing right turn, intercept R180 AKR to Sierra.

DEP RWY10 PAPA: Climbing right turn until R180 AKR, then direct Papa

DEP LAKE: no EXIT.

NOT AVAILABLE

NOT AVAILABLE